

As of
April 2025

SUSQUEHANNA RIVER RAIL BRIDGE PROJECT



Project Update



The Amtrak Susquehanna River Bridge Project is a critical infrastructure project that will improve rail connectivity along the Northeast Corridor (NEC) by replacing the existing two-track bridge over the Susquehanna River between the City of Havre de Grace in Harford County, Maryland, and the Town of Perryville in Cecil County, Maryland. The new structures will include two new, fixed parallel bridges with greater vertical and horizontal clearances for marine traffic. Amtrak is beginning preparatory work for the project. This project update describes recent progress and upcoming activities residents and business owners may see in the coming months. The activity descriptions and general locations below are dynamic and subject to change.

Recent Progress

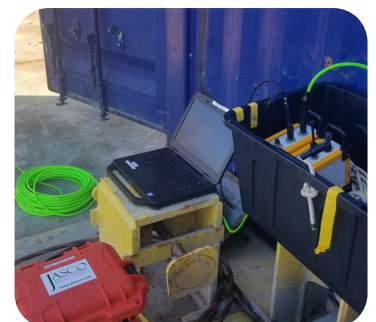
- Amtrak received the Maryland Board of Public Works Tidal Wetland License on March 19, 2025, and the Maryland Department of the Environment Non-Tidal License on March 24, 2025.
- Crews began subsurface utility investigations on March 17, 2025 in Havre de Grace and on March 25, 2025 in Perryville. The information gathered will be used to identify utilities that may conflict with upcoming bridge construction so that any necessary relocations can occur in advance of construction.
- Project Team has prepared final real estate documents and appraisals for more than 30% of the anticipated easements for the Project.
- The Project was recently featured in a new video published by The B1M, the world's largest video channel for construction. Click [here](#) to watch!



Project Team filming B1M video

Environmental Surveys

- Crews will continue to conduct surveys to gather information about natural and archaeological resources and ambient noise and vibration in the first and second quarters of 2025.
- Surveys will be conducted during daytime weekday hours.
- Work will involve excavation, measurements, photographs, drones, etc.



*Noise and vibration
monitoring equipment*

As of
April 2025

SUSQUEHANNA RIVER RAIL BRIDGE PROJECT



Environmental and Geotechnical Testing

- Crews will be in various locations throughout the project site during the first and second quarters of 2025 performing environmental and geotechnical borings to provide the design and construction teams with a better understanding of subsurface conditions.
- These activities are expected to occur during daytime and weekday hours.
- Boring rigs, vacuum excavators and hand augers will be used to collect soil and in-river samples.
- Disturbed areas will be restored upon completion.



Soil borings

Subsurface Utility Investigations

- Crews will identify subsurface utilities throughout the project corridor using ground penetrating radar, hand augers, and vacuum excavators.
- Investigations will continue throughout 2025 and into 2026.
- Underwater utility identification is expected to take place on the west side (upstream) of the existing bridge. Divers will be used to gather underwater information.
- Activities will typically occur during daytime weekday hours.
- There will be roadway impacts at some locations. Crews will coordinate lane closures with the appropriate authorities prior to starting work.
- Disturbed areas will be restored upon completion.



Identification of
subsurface utilities

Ongoing Railroad Maintenance

- In addition to the project-specific activities, Amtrak will continue performing regular inspections and maintenance along the existing bridge and adjacent segments of the Northeast Corridor.



Maintenance on the
Northeast Corridor
Credit: Amtrak

Project Timeline



Updated April 7, 2025

As of
April 2025

SUSQUEHANNA RIVER RAIL BRIDGE PROJECT




Approximate Locations of On-Going and Upcoming Activities




For More Information:

 AmtrakNewEra.com/SRB

 SRBProject@amtrak.com

 Amtrak – Attn Susquehanna River Bridge Project
Box 65 – 2955 Market Street, Philadelphia, PA 19104

 844-SUS-RAIL
844-787-7245

Scan to sign up for
our newsletter

