



SCRANTON-NEW YORK CITY INTERCITY PASSENGER RAIL ANALYSIS CORRIDOR OVERVIEW & ASSUMPTIONS



MP 129.0 Marker



MP 130.00



MP 130.0 Power Line Shift



MP 130.10A Power Line Shift & Signal Bridge



SCRANTON-NEW YORK CITY INTERCITY PASSENGER RAIL ANALYSIS CORRIDOR OVERVIEW & ASSUMPTIONS



MP 130.15 Power Line Shift & Signal Bridge



MP 130.21 UG Bridge



MP 131 Marker



MP 131.00



SCRANTON-NEW YORK CITY INTERCITY PASSENGER RAIL ANALYSIS

CORRIDOR OVERVIEW & ASSUMPTIONS



MP 131.3



MP 131.35
Myrtle Avenue Crossing
looking West

MP 131.35
Myrtle Avenue Crossing
looking south





MP 131.45

NAYAUG Block Sign looking East



MP 131.45

Nay Aug Switch looking West

MP 131.50
Nay Aug Tunnel
East Portal
North & South
Bores



MP 131.5
Nay Aug
Tunnel
West Portal
North Bore





SCRANTON-NEW YORK CITY INTERCITY PASSENGER RAIL ANALYSIS CORRIDOR OVERVIEW & ASSUMPTIONS



MP 132.10 East University Crossing East Hat Switch



MP 132.00



MP 132.10 East University Crossing



MP 132.80
West Hat Switch



MP 132.81



MP 132.81



MP 132.85
West University
Pedestrian Crossing



MP 132.85 West University Crossing



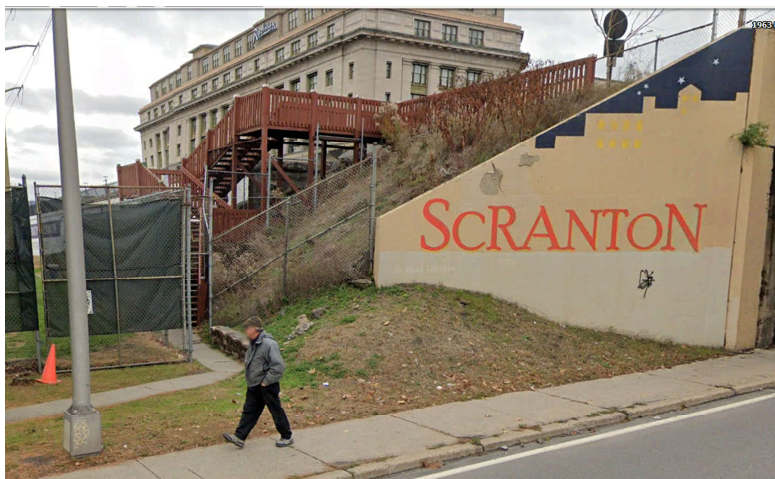
SCRANTON-NEW YORK CITY INTERCITY PASSENGER RAIL ANALYSIS CORRIDOR OVERVIEW & ASSUMPTIONS



MP 133 Marker



MP 133.00



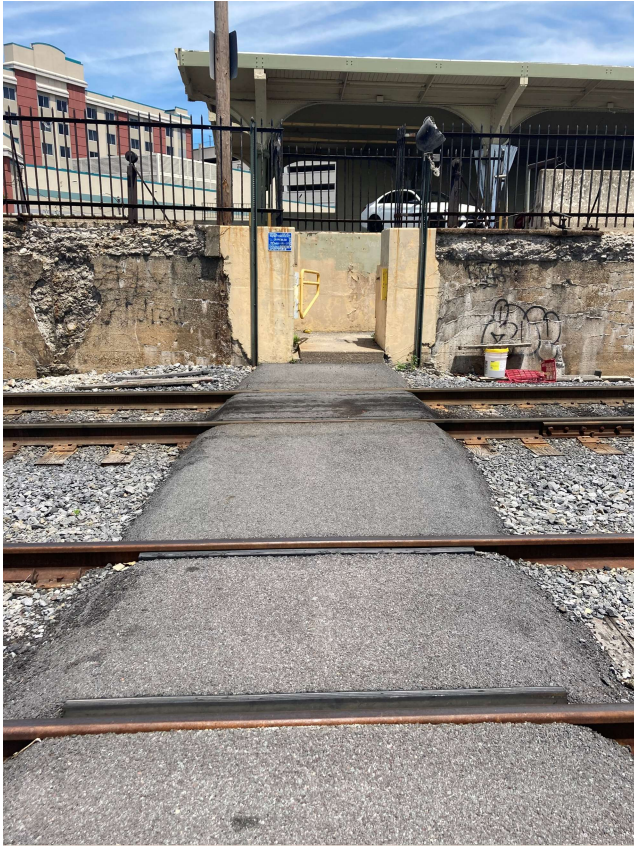
MP 133.10 East Station
Pedestrian Crossing Stairs



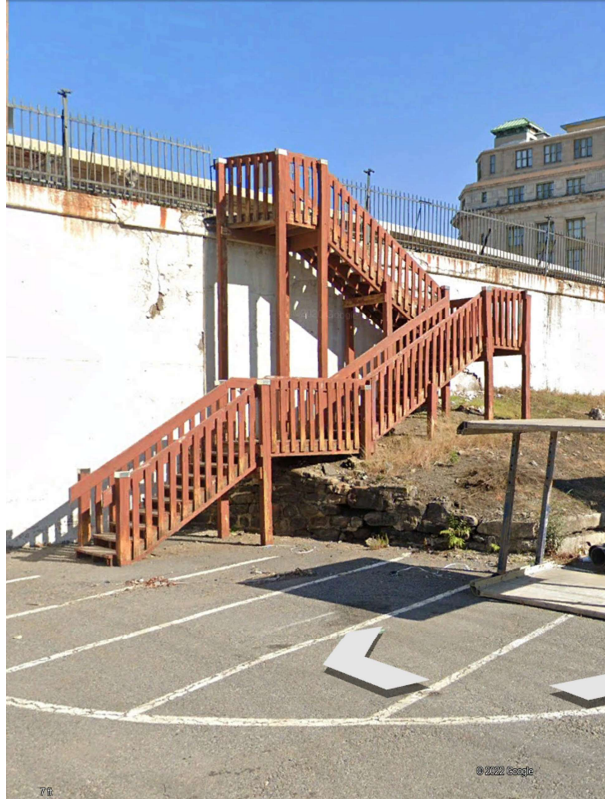
MP 133.10 East Station Ped Crossing



SCRANTON-NEW YORK CITY INTERCITY PASSENGER RAIL ANALYSIS CORRIDOR OVERVIEW & ASSUMPTIONS



MP 133.18 West Station
Pedestrian Crossing



MP 133.18
West
Station
Pedestrian
Stairs



MP 133.14 Old Scranton Station



MP 133.19 W Receiver Switch



MP 133.19 West Receiver Switch



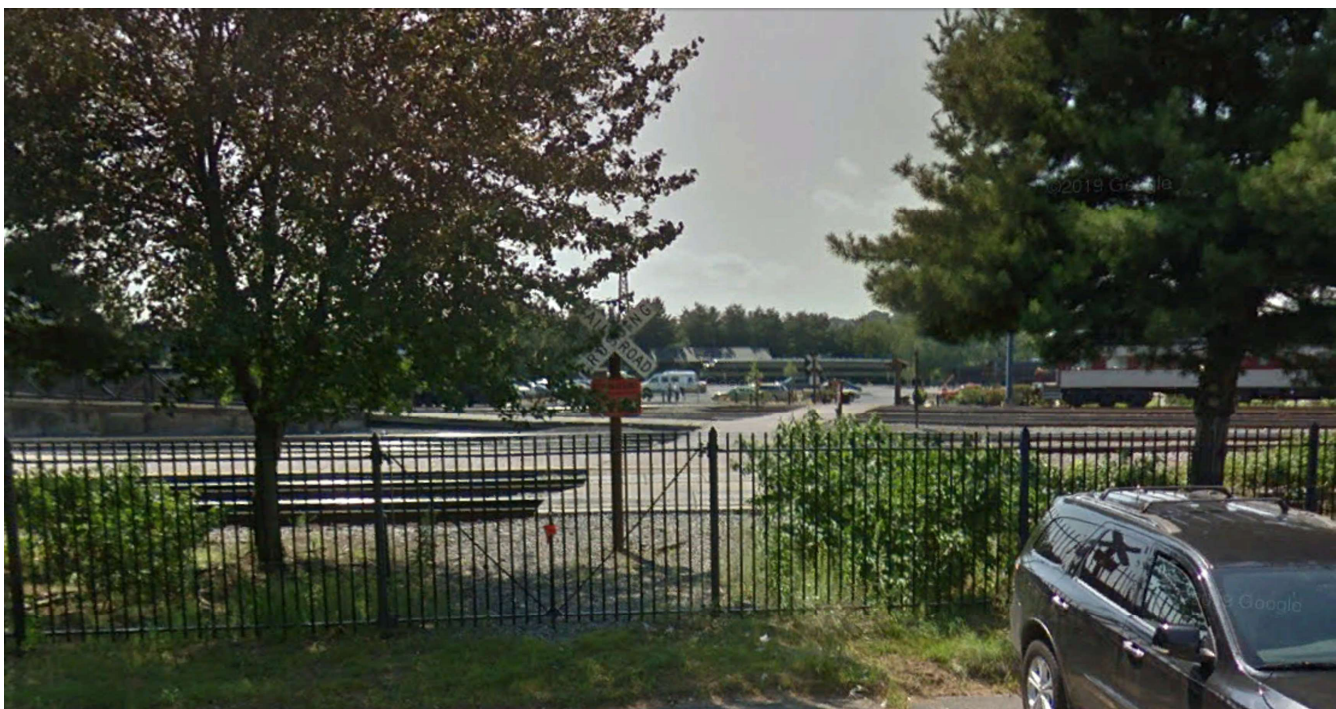
MP 133.19 West Receiver Switch



MP 133.40 Mall at Steamtown OH Pedestrian Bridge



MP 133.70 Excursion Platform & Boardwalk Crossing looking East



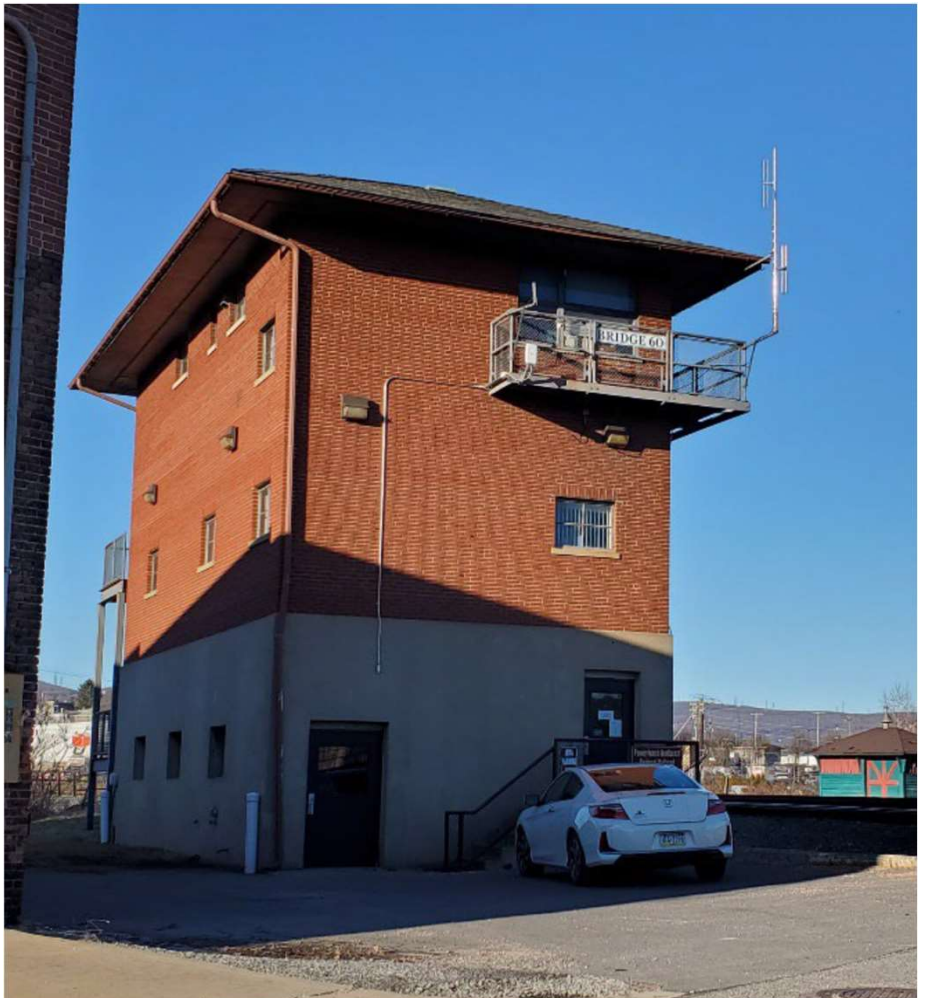
MP 133.70 Gated North End of Boardwalk Crossing



MP 133.75

Bridge 60 Tower (left)
Cliff St Crossing (center)
& Pedestrian Underpass
(right)

MP 133.75
Bridge 60 Tower





MP 133.75 Bridge 60 UG East End looking South
spanning (L to R) Cliff Avenue, Norfolk Southern & Lackawanna River



MP 133.75 Bridge 60 UG West End looking North
spanning (L to R) South 7th Avenue, Bikeway & Lackawanna River

Pocono Mainline Schematic

EXISTING CONDITIONS

APPENDIX

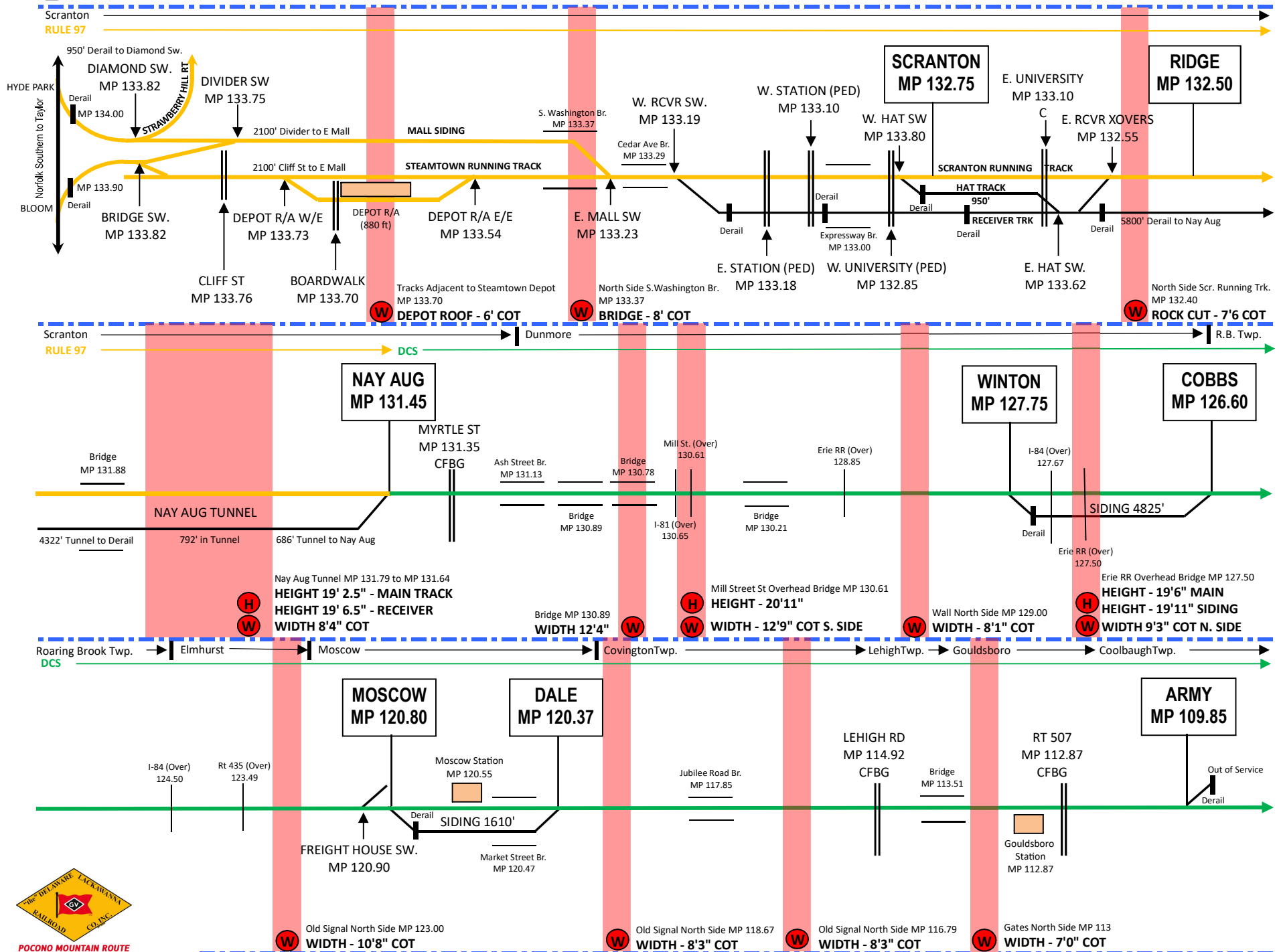
1A



POCONO MAIN TRACK EXISTING CONFIGURATION

W ← → E

PG 1



POCONO MOUNTAIN ROUTE

E



Pocono Mainline Schematic

ASSUMED IMPROVEMENTS

APPENDIX

1B

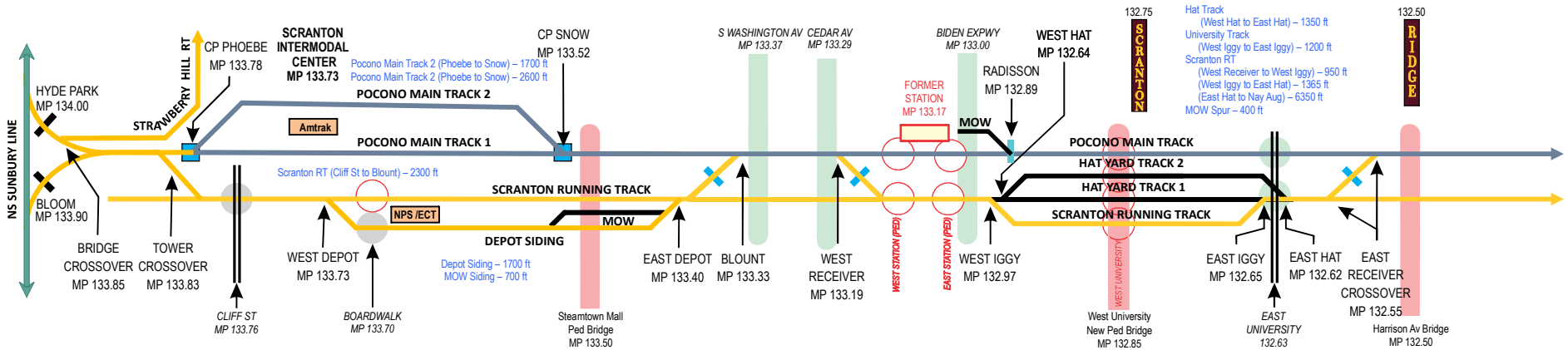


POCONO MAIN TRACK ASSUMED CONFIGURATION

CURRENT OF TRAFFIC
W ← → E

PAGE 1 OF 2

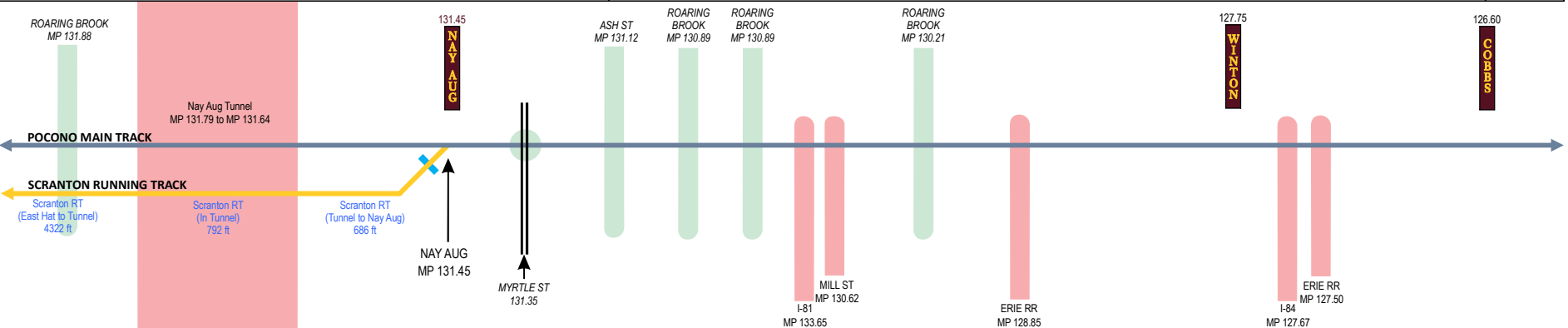
SCRANTON



SCRANTON

DUNMORE

ROARING BROOK TWP



ROLLING BROOK TWP

ELMHURST

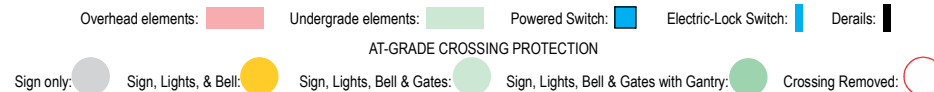
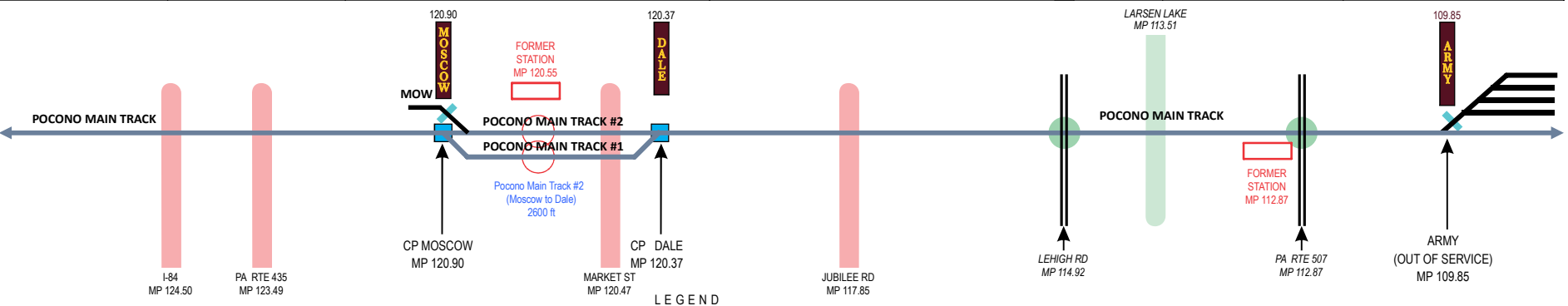
MOSCOW

COVINGTON TWP

LEHIGH TWP

GOLDSBORO

COOLBAUGH TWP



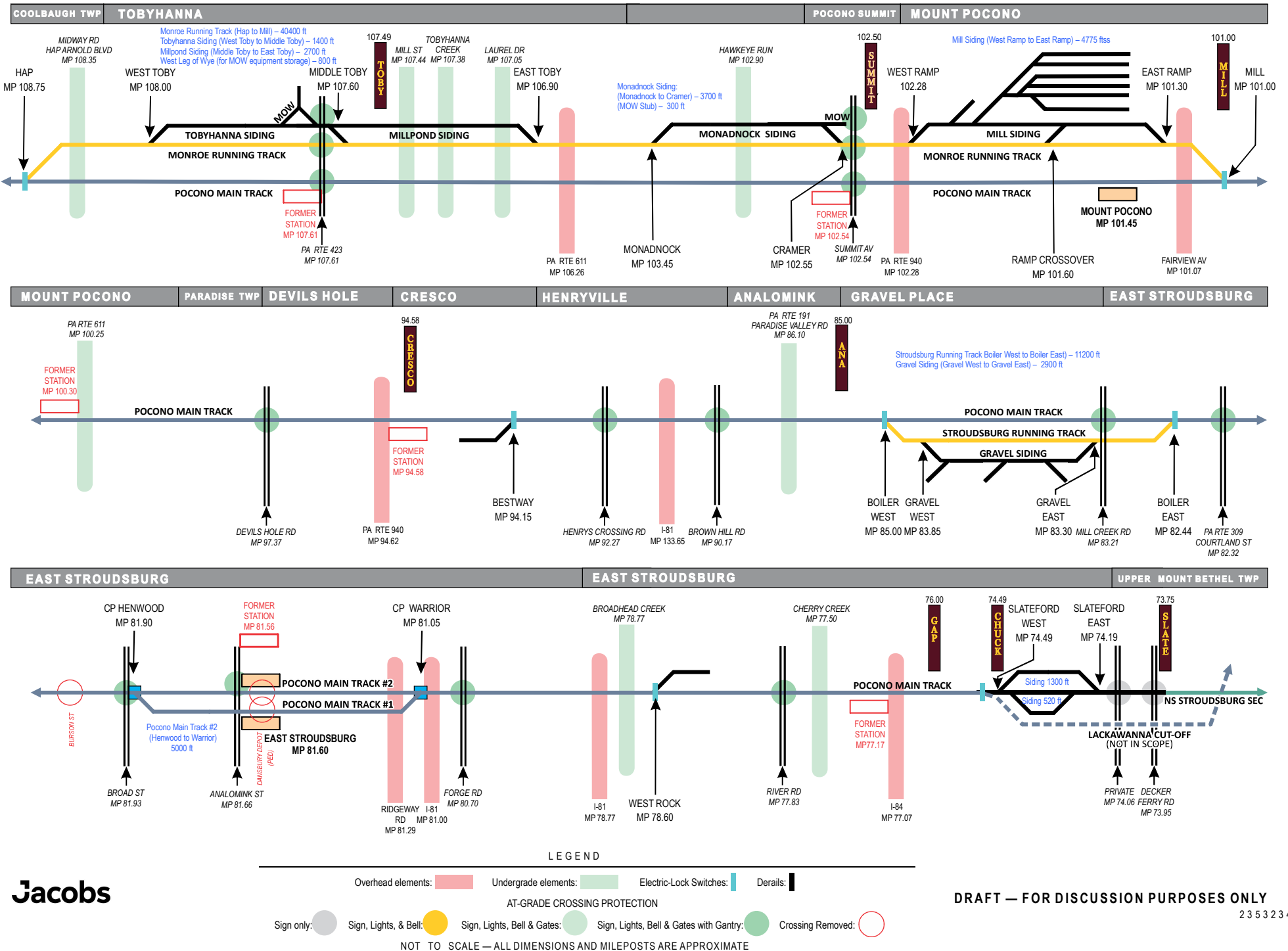
DRAFT — FOR DISCUSSION PURPOSES ONLY



POCONO MAINLINE ASSUMED CONFIGURATION

CURRENT OF TRAFFIC
W ← → E

PAGE 2 OF 2



Jacobs

DRAFT — FOR DISCUSSION PURPOSES ONLY

2 3 5 3 2 3 4 0

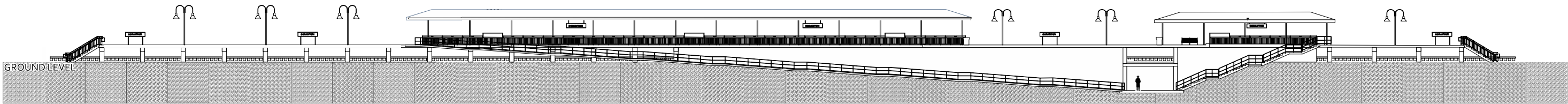
Conceptual Scranton Station Plan & Profile

USING EXISTING
PEDESTRIAN UNDERPASS

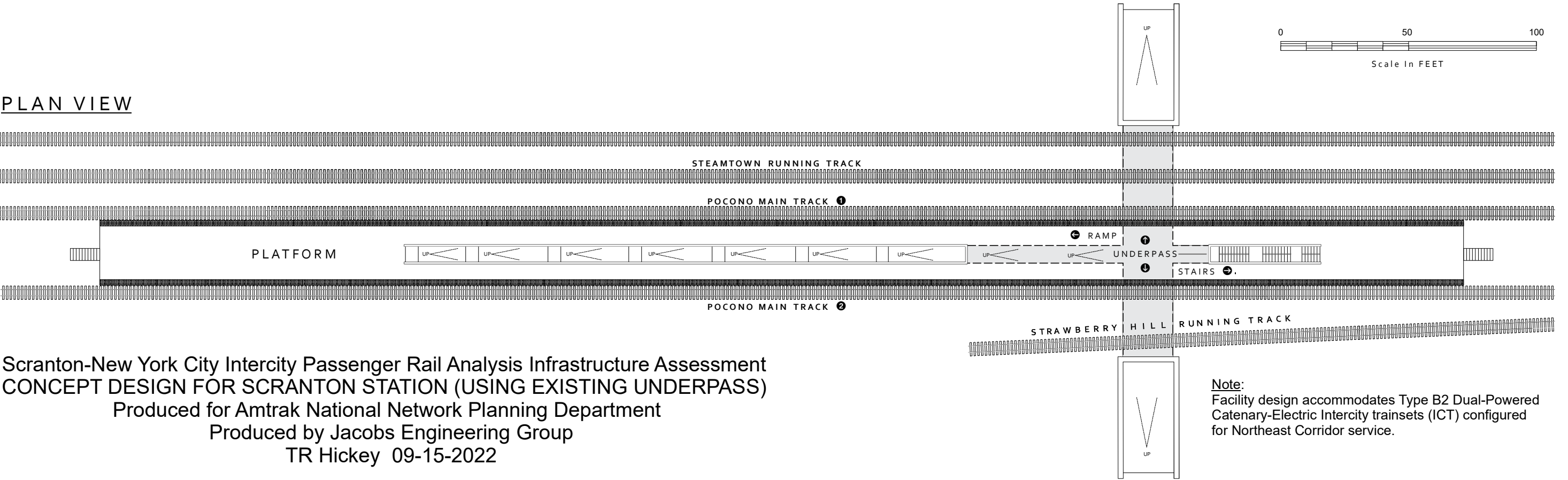
APPENDIX

1C

SECTION ELEVATION



PLAN VIEW

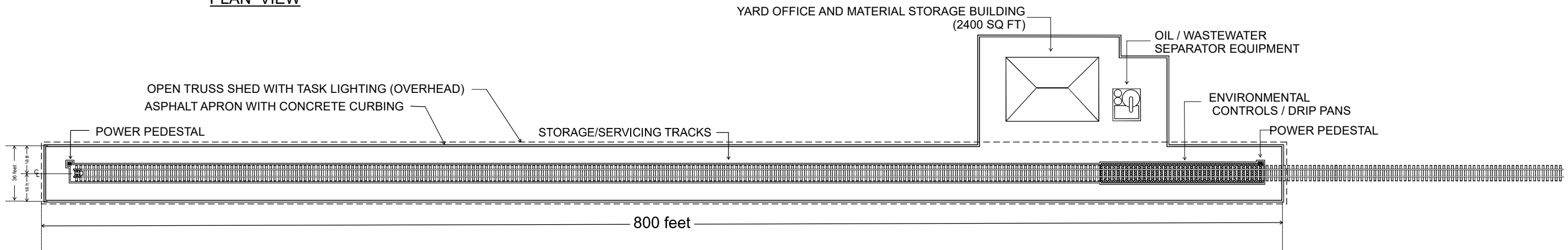


Generic Overnight Servicing & Storage Facility Plan

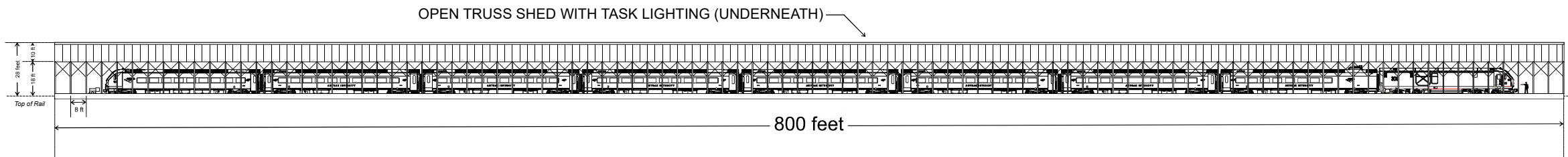
APPENDIX

1D

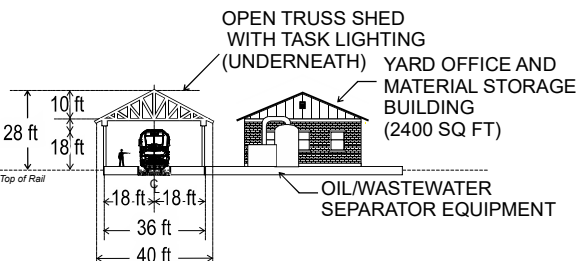
PLAN VIEW



SIDE ELEVATION



END ELEVATION



Scranton-New York City Intercity Passenger Rail Analysis Infrastructure Assessment
GENERIC OVERNIGHT STORAGE & SERVICING FACILITY LAYOUT
Produced for Amtrak National Network Planning Department
Produced by Jacobs Engineering Group
TR Hickey 07-14-2022

Note:
Facility design accomodates a single Type B2 Dual-Powered Catenary-Electric Intercity Trainset (ICT) configured for Northeast Corridor service. A comparable facility for a Type B1 ICT only would be 168 feet shorter.



Genesee Valley Transportation System Time Table No. 5

**DELAWARE-LACKAWANNA
& NATIONAL PARK SERVICE
SPECIAL INSTRUCTION
PAGES**

APPENDIX

1E

GENESEE VALLEY TRANSPORTATION



DELAWARE-LACKAWANNA RAILROAD CO., INC.
DEPEW, LANCASTER AND WESTERN RAILROAD CO., INC.
FALLS ROAD RAILROAD CO., INC.
MOHAWK ADIRONDACK AND NORTHERN RAILROAD CORP.

NATIONAL PARK SERVICE

STEAMTOWN NATIONAL HISTORIC SITE/DELAWARE-LACKAWANNA RR
JOINT TRACKAGE

SYSTEM TIME TABLE NO.

5

For the government of Employees Only

**EFFECTIVE 0001 HOURS
JANUARY 14, 2019**

Note: Phone numbers and personal information redacted.

GENESEE VALLEY TRANSPORTATION

MISSION STATEMENT

As a corporation Genesee Valley Transportation strives to:

- * Remain the safest rail service provider in the industry.
Form loyal partnerships with our customers.**
- * Treat customers as trusted allies.
Provide services that maximize efficiency and reliability.**
- * Provide customers with assurances that GVT will be there
when needed.**
- * Provide a dedicated work force that is highly skilled
and trained**
- * Provide employees with a work atmosphere that encourages
personal and professional growth, advancement potential
and a rewarding place to work.**

PRINCIPLES OF SAFETY

- * We are committed to providing a safe work environment
for all employees.**
- * We believe that the safe performance of the job is always
more important than the job itself.**
- * We provide the training, tools and resources required to
ensure a safe and clean workplace.**
- * Employees are empowered and required to discontinue any
activity that involves the use of unsafe practices and tools.**

**DO THE RIGHT THING, EVEN WHEN NO ONE IS LOOKING -
IT'S CALLED "INTEGRITY"**

TIMETABLE ORGANIZATION

GVT System Timetable #4 is divided into two main sections:

- The first section contains General Speed Instructions as well as System Special Instructions and pertains to modifications relative to the operating rules on GVT property. System Special Instructions are prefaced by the letter "S" followed by a referenced NORAC rule number. For Example: S80-1, S131-2 etc.

General Speed Instructions are prefaced by the letters "SP".

- The second section contains Station Pages and pertains to special instructions and/or procedures pertaining to specific lines or locations. These instructions are prefixed by a referenced NORAC rule number followed by a two letter abbreviation for that line. For Example: 138-FR1, 104-CD2 etc.

CONTENTS

ITEM	RULE(S)	PAGE
AUTHORIZED ABBREVIATIONS		7
COMPANY MEDICAL FACILITIES		8
EXAMINATION RECORD		6
QUALIFICATIONS, EMPLOYEE		5
GENERAL SPEED RULES		
JOINTED RAIL	SP-1	9
LOCOMOTIVES W/O RECORDING DEVICES	SP-2	9
SPEEDS - ENGINES	SP-3	9
SPEEDS - EQUIPMENT	SP-4	9
SYSTEM SPECIAL INSTRUCTIONS		
CONDUCTORS - PAPERWORK	S941-1	19
DCS STATION SIGNS	S400-1	18
DEFECTS - INSPECTION BEFORE DEPARTURE	S70-1	14
DISPATCHERS - LIMITED HOURS OF OPERATION	S903-1	19
DISPATCHING DISTRICTS	S902-1	18
DRUGS & ALCOHOL	SG-1	11
EASTERN TIME/MILITARY TIME APPLIES	S2-1	13
EQUIPMENT - EXCESS DIMENSIONS/WEIGHT	S119-1	15
FORM D'S - BULLETIN ORDER NOTATION	S165-2	17
FORM D'S - DICTATION	S165-1	17
FORM D'S - ISSUING	S160-1	17
FUSEES - STOP/OBSTRUCTION	S80-1	14
GENERAL ORDERS, BULLETIN ORDERS	S1-2	13
HIGHWAY/RAIL CROSSINGS - APPROACHING WITH NO DISPATCHER ON DUTY	S138-3	16
HIGHWAY/RAIL CROSSINGS - INDICATOR LIGHTS	S138-5	17
HIGHWAY/RAIL CROSSINGS - MALFUNCTION WITH NO DISPATCHER ON DUTY	S138-4	17
HOURS OF SERVICE	SQ-1	12
HUMAN FACTOR REGULATIONS	SB-1	10
JOB BRIEFINGS	S4-1	13
LOCATION OF BULLETINS, REGISTERS, CLOCKS	S1-3	13
LOCOMOTIVE SHUT DOWN	S950-1	19
MEASURED MILES	S956-1	20

ITEM	RULE(S)	PAGE
SYSTEM SPECIAL INSTRUCTIONS - CONTINUED		
ON/OFF MOVING EQUIPMENT	SN-1	12
PASSENGER CARS - COMMUNICATION SIGNALS	S21-1	14
PASSENGER EQUIP. - COUPLING/SWITCHING	S100-1	14
PERSONS PERMITTED TO RIDE ENGINES	SL-1	11
PHYSICALS, COMPANY MEDICAL OFFICERS	SC-1	11
PROHIBITED EQUIPMENT	S119-2	15
PUBLIC CROSSINGS - AAR NUMBERS	S138-6	17
PUBLIC CROSSINGS - OTHER THAN MAIN TRACK	S138-1	16
POSITIVE PROTECTION	SS-1	12
QUALIFICATIONS - PHYSICAL CHARACTERISTICS	SC-2	11
RADIOS - FIXED BASE STATIONS/CHANNELS	S706-1	18
REPORTING FOR DUTY	S1-1	13
REPORTING REQUIREMENTS - ENGINEERS	SC-3	11
REQUIRED BOOKS	SA-1, SA-2, SA-3	10
REQUIRED BOOKS - FOREIGN CREWS	SA-3	10
RIGHT TO CHALLENGE POLICY	SB-2	10
RUSTY RAIL CONDITIONS	S138-2	16
SEVERE WEATHER - DISPATCHER NOTIFICATION	SF-1	11
SPEED TABLE	S956-2	20
UNATTENDED TRAINS	S109-1	15
WHISTLE POST LOCATION	S19-1	14
WORK SITES - FLAG PROTECTION	S131-1	16
WORK SITES - TRAIN CREW RESPONSIBILITIES	S131-2	16

CONTENTS

ITEM	RULE(S)	PAGE
DEPEW LANCASTER & WESTERN RAILROAD		
BATAVIA INDUSTRIAL TRACK (BT) - STATION PAGE		22
- CLOSE CLEARANCE AREAS	B-BT1	22
- HIGHWAY-RAIL CROSSINGS AT GRADE	138-BT1	23
- MAXIMUM AUTHORIZED SPEEDS	124-BT1	23
- RUNAROUNDS	N-BT1	22
LEHIGH INDUSTRIAL TRACK (LH) - STATION PAGE		24
- CLOSE CLEARANCE AREAS	B-LH1	24
- EXCEPTED TRACK	99-LH1	24
- MAXIMUM AUTHORIZED SPEEDS	124-LH1	24
LANCASTER INDUSTRIAL TRACK (LC) - STATION PAGE		25
- CLOSE CLEARANCE AREAS	B-LC1	25
- HIGHWAY-RAIL CROSSINGS AT GRADE	138-LC1	25
- MAXIMUM AUTHORIZED SPEEDS	124-LC1	25
- RUNAROUNDS	N-LC1	25
FALLS ROAD RAILROAD		
FALLS ROAD MAIN TRACK (FR) - STATION PAGE		26
- ALBION REPEATER	706-FR1	30
- CLOSE CLEARANCE AREAS	B-FR1	26
- HIGHWAY-RAIL CROSSINGS AT GRADE	138-FR1	28,29
- MAXIMUM AUTHORIZED SPEEDS	124-FR1	27
- PERMANENT DERAILS	104-FR2	27
- SWITCH AND SIDING IDENTIFICATION	104-FR1	27
- TELEPHONE DIRECTORY DLWR/FRR		31
MOHAWK ADIRONDACK & NORTHERN RAILROAD		
LYONS FALLS LINE (LF) - STATION PAGE		34
- CLOSE CLEARANCE AREAS	B-LF1	34
- HIGHWAY-RAIL CROSSINGS AT GRADE	138-LF1	36,37
- MAXIMUM AUTHORIZED SPEEDS	124-LF1	35
- PERMANENT DERAILS	104-LF2	35
- SWITCH AND SIDING IDENTIFICATION	104-LF1	35
- REPEATER, BOWEN HILL	706-LF1	38
ROME INDUSTRIAL TRACK (RM) - STATION PAGE		39
- CLOSE CLEARANCE AREAS	B-RM1	39
- HIGHWAY-RAIL CROSSINGS AT GRADE	138-RM1	40
- MAXIMUM AUTHORIZED SPEEDS	124-RM1	40
- RUNAROUNDS	N-RM1	39
NEWTON FALLS LINE (NF) - STATION PAGE		41
- HIGHWAY-RAIL CROSSINGS AT GRADE	138-NF1	42
- MAXIMUM AUTHORIZED SPEEDS	124-NF1	41
- RUNAROUNDS	N-NF1	41
- TELEPHONE DIRECTORY MHW		43
DELAWARE-LACKAWANNA RAILROAD		
POCONO MAIN TRACK (PC) - STATION PAGE		46
- ADDITIONAL REQUIRED BOOKS	A-PC1	47
- CLOSE CLEARANCE AREAS	B-PC1	47
- ENGINE HORN/WHISTLE SIGNALS	19-PC1	47
- EQUIPMENT RESTRICTIONS	EQ-PC1	47
- HIGHWAY-RAIL CROSSINGS AT GRADE	138-PC1	49
- MAXIMUM AUTHORIZED SPEEDS	124-PC1	49
- PERMANENT DERAILS	104-PC2	48
- PERSONAL PROTECTIVE EQUIPMENT	N-PC1	47
- REPEATERS - CAMELBACK, SCRUB OAK	706-PC1, PC-2	50
- RUNNING BREAK TESTS	16.1-PC1	50
- SECURING CARS - NS INTERCHANGE	109-PC1	48
- SIGNAL ASPECTS NOT IN COMFORTY	242-PC1	50
- SWITCH AND SIDING IDENTIFICATION	104-PC1	49

ITEM	RULE(S)	PAGE
DELAWARE-LACKAWANNA RAILROAD		
CARBONDALE MAIN TRACK (CD) - STATION PAGE		51
- CLOSE CLEARANCE AREAS	B-CD1	52
- HIGHWAY-RAIL CROSSINGS AT GRADE	138-CD1	53
- MAXIMUM AUTHORIZED SPEEDS	124-CD1	53
- PERMANENT DERAILS	104-CD2	52
- SWITCH AND SIDING IDENTIFICATION	104-CD1	52
STRAWBERRY HILL RUNNING TRACK (SH) - STATION PAGE		54
- HIGHWAY-RAIL CROSSINGS AT GRADE	138-SH1	54
- MAXIMUM AUTHORIZED SPEEDS	124-SH1	54
- SWITCH AND SIDING IDENTIFICATION	104-SH1	54
VINE STREET INDUSTRIAL TRACK (VN) - STATION PAGE		55
- CLOSE CLEARANCE AREAS	B-VN1	55
- EQUIPMENT RESTRICTIONS	EQ-VN1	55
- HIGHWAY-RAIL CROSSINGS AT GRADE	138-VN1	56
- MAXIMUM AUTHORIZED SPEEDS	124-VN1	55
- SWITCH AND SIDING IDENTIFICATION	104-VN1	55
LAUREL LINE (LL) STATION PAGE		57
- ADDITIONAL REQUIRED BOOKS	TS-LL2	59
- CLOSE CLEARANCE AREAS	B-LL1	57
- ENGINE HORN/WHISTLE SIGNALS	19-LL1	57
- EQUIPMENT RESTRICTIONS	EQ-LL1	57
- HIGHWAY-RAIL CROSSINGS AT GRADE	138-LL1	58
- MAXIMUM AUTHORIZED SPEEDS	124-LL1	58
- PERMANENT DERAILS	104-LL2	58
- SAFETY IN ELECTRIFIED TERRITORY	TS-LL1	59
- SWITCH AND SIDING IDENTIFICATION	104-LL1	58
- SWITCHING PROCEDURES - BRADY YD	104-LL3	58
- TELEPHONE DIRECTORY, DL		61
- TEMPORAL SEPARATION	TS-LL3	59,60
SCRANTON RUNNING TRACK (SR) - STATION PAGE		64
- CLOSE CLEARANCE AREAS	B-SR2	65
- EQUIPMENT RESTRICTIONS	EQ-SR1	65
- HIGHWAY/PED. CROSSINGS AT GRADE	138-SR1	66
- MAXIMUM AUTHORIZED SPEEDS	124-SR1	66
- PEDESTRIAN CROSSING CLEARANCE	138-SR3	66
- PERMANENT DERAILS	104-SR1	66
- RULES IN EFFECT	B-SR1	65
NATIONAL PARK SERVICE		
- ADDITIONAL REQUIRED BOOKS	A1-S	66
- PHYSICALS/COMPANY MEDICAL	C1-S	66
- NPS SPECIAL INSTRUCTIONS	L1-S thru 981-1S	66-72
- TELEPHONE DIRECTORY, NPS		73

EMPLOYEE QUALIFICATIONS

NAME: _____

OCCUPATION: _____

RAILROAD: _____

Date:	NORAC Operating Rules Examiner Signature	Pass/Fail
Date:	CSX Operating Rules Examiner Signature	Pass/Fail
Date:	NS Operating Rules Examiner Signature	Pass/Fail
Date:	On-Track Safety Examiner Signature	Pass/Fail
Date:	Physical Characteristics Line/Section of Track	Examiner

Date:	Safety Rules Examiner Signature	Pass/Fail
Date:	Air Brake Rules Examiner Signature	Pass/Fail
Date:	Hazmat/Security Examiner Signature	Pass/Fail
Date:	Other Training Training Type	Examiner
Date:	Physical Characteristics Line/Section of Track	Examiner

EXAMINATION RECORD - TIMETABLE & OTHER INSTRUCTIONS

Date:							
Location:							
Engine No:							
Required Items: Place ✓ if present at time of examination. Mark missing/incomplete items "X".							
Timetable:							
Rule Book:							
Safety Book:							
Airbrake:							
Haz-Mat:							
ERG:							
Form D:							
Bulletin Order:							
General Order:							
Signature & Title of Examiner:							
REMARKS							
Date:							
Date:							
Date:							
Date:							
Date:							
Date:							
Date:							
Date:							

AUTHORIZED ABBREVIATIONS

DIVISION/LINE	
ABBREVIATION	DLWR/FRR
BT	Batavia Industrial Track
FALLS	Falls Road Main Track
LC	Lancaster Industrial Track
LH	Lehigh Industrial Track
ABBREVIATION	MHWA
LYONS	Lyons Falls Line
NF	Newton Falls Line
RM	Rome Industrial Track
ABBREVIATION	DL/NPS
BRADY	Brady Lead
CHAMB	Chamberlain Lead
CARB	Carbondale Main Track
LAUREL	Laurel Line Main Track
LLRT	Laurel Line Running Track
MIT	Minooka Industrial Track
POCO	Pocono Main Track
RCVR	Receiver Track
STR	Scranton Running Track
SBH	Strawberry Hill Running Track
VINE	Vine Street Industrial Track
TROLLEY TRACK	Electrified portions of the Laurel Line Main Trk, Laurel Line Running Trk, Brady Lead, Depot Runaround and the Brady/Depot Crossover.

HIGHWAY/RAIL CROSSING PROTECTION	
ABBREVIATION	EQUIPPED WITH
C	Cross bucks
F	Flashing Lights
B	Bell
G	Gates
X	In Column under these letters indicates type of protection at that crossing and indicates in service/applies continuously.

STREET ABBREVIATIONS	
ABBREVIATION	MEANING/INTENT
Bld	Boulevard
Hwy	Highway
Ln	Lane
Ped	Pedestrian Crossing
Pvt	Private Crossing
Rd	Road

LOCATIONS (DL RR)	
ABBREVIATION	LOCATION
BR60	Bridge 60 Tower
ERCS	East Receiver Crossover Switch
WRS	West Ramp Switch

ADDITIONAL ABBREVIATIONS	
ABBREVIATION	MEANING/INTENT
IND	Industrial Track
LD	Lead
RA	Runaround
SDG	Siding
TS	Temporal Separation
XOVER	Crossover
YD	Yard

DIRECTIONS	
ABBREVIATION	DIRECTION
N.	North
S.	South
E.	East
W.	West

TITLES	
ABBREVIATION	TITLE/POSITION
Frm	Foreman
GS	General Superintendent
Mtr	Signal Maintainer
Supt	Superintendent
Supv	Supervisor
Tm	Trainmaster