



MP 81.56
Historic
East Stroudsburg
Station in situ
(1909)



MP 81.56
Historic
East Stroudsburg
Station Restored
& Relocated



MP 81.56
Dansbury Depot
Pedestrian
Crossing





MP 81.60

Close-Clearance to Adjacent
Commercial Development and Sloppy
Track Throw from the Conrail-era

MP 81.70 Restored Historic Tower



MP 81.7 Analomink St Crossing (looking East) with
(L-to-R) the historic Station and Tower and Danbury Depot Shops



MP 81.70
Crossing Protection Cabinet
at Analomink St Crossing

MP 81.75
Approaching Analomink St Crossing
(looking East) with
Hughes Siding Stub (on right)





MP 81.75 Approaching Analomink St Crossing (looking West)
with Hughes Siding Stub (on left)

MP 81.85
Hughes Siding
Switch
(looking East)





MP 81.87 Looking West



MP 81.90 Looking East



MP 81.93 Broad St Crossing looking West



MP 81.93 Broad St Crossing looking East

MP 82.0
looking East





SCRANTON-NEW YORK CITY INTERCITY PASSENGER RAIL ANALYSIS CORRIDOR OVERVIEW & ASSUMPTIONS



MP 82.15 Burson St Crossing



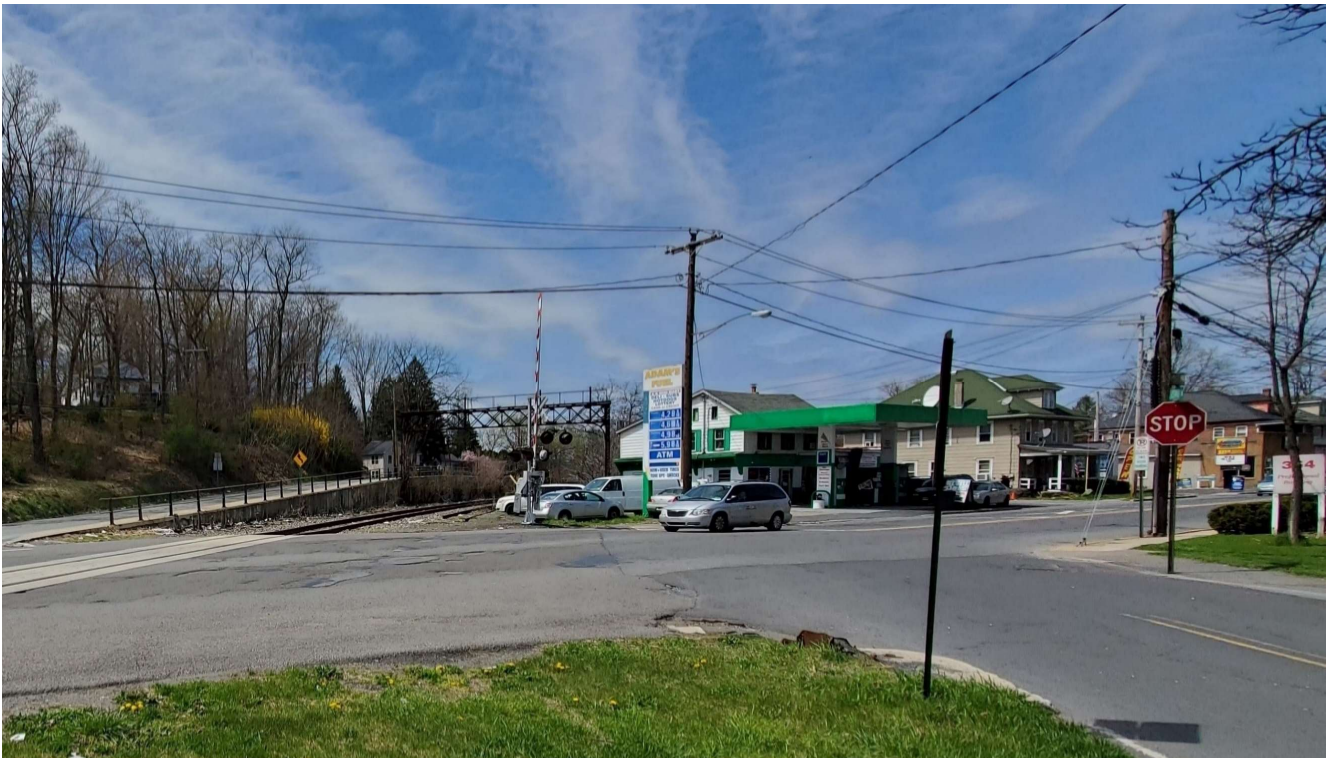
MP 82.15 Burson St Crossing looking West



SCRANTON-NEW YORK CITY INTERCITY PASSENGER RAIL ANALYSIS CORRIDOR OVERVIEW & ASSUMPTIONS



MP 82.32 Courtland St Crossing looking East



MP 82.32 Courtland St Crossing looking West



SCRANTON-NEW YORK CITY INTERCITY PASSENGER RAIL ANALYSIS CORRIDOR OVERVIEW & ASSUMPTIONS



MP 82.32 Courtland St Crossing looking West



MP 82.32 Courtland St Crossing looking East



MP 82.4 Approaching Courtland St Crossing looking East



MP 82.5 Approaching Courtland St Crossing looking East



MP 82.5 looking West



MP 82.44 Boiler Siding East End Switch



MP 83.00 Boiler Siding



MP 83.3 Gravel Siding East End Switch & Boiler Siding



MP 83.4 Gravel Siding & Boiler Siding



MP 83.21 Mill Creek Rd Crossing & Boiler Siding

MP 83.11
Gravel Place Tower





MP 83.5 Gravel Siding & Boiler Siding



MP 83.85 Gravel Siding West End Switch & Boiler Siding



MP 84.72 PA191 OH Bridge



MP 84.00

MP 85 &
Block Station ANA
Marker





SCRANTON-NEW YORK CITY INTERCITY PASSENGER RAIL ANALYSIS CORRIDOR OVERVIEW & ASSUMPTIONS



MP 85.00



MP 86.10

PA Route 191 (Paradise Valley Road) UG Bridge



SCRANTON-NEW YORK CITY INTERCITY PASSENGER RAIL ANALYSIS CORRIDOR OVERVIEW & ASSUMPTIONS



MP 87 Marker



MP 87.00 Watershed Notice



MP 87.5 Clearing Downed Tree



MP 88.00



MP 89.00 Washout



MP 90.17 Brown Hill Rd



MP 92 Marker & Rock Cut



MP 92.27 Henrys Rd Crossing



MP 93 Marker



MP 94.15 Bestway Switch



MP 94.15 Bestway Switch