



Host Railroad Report

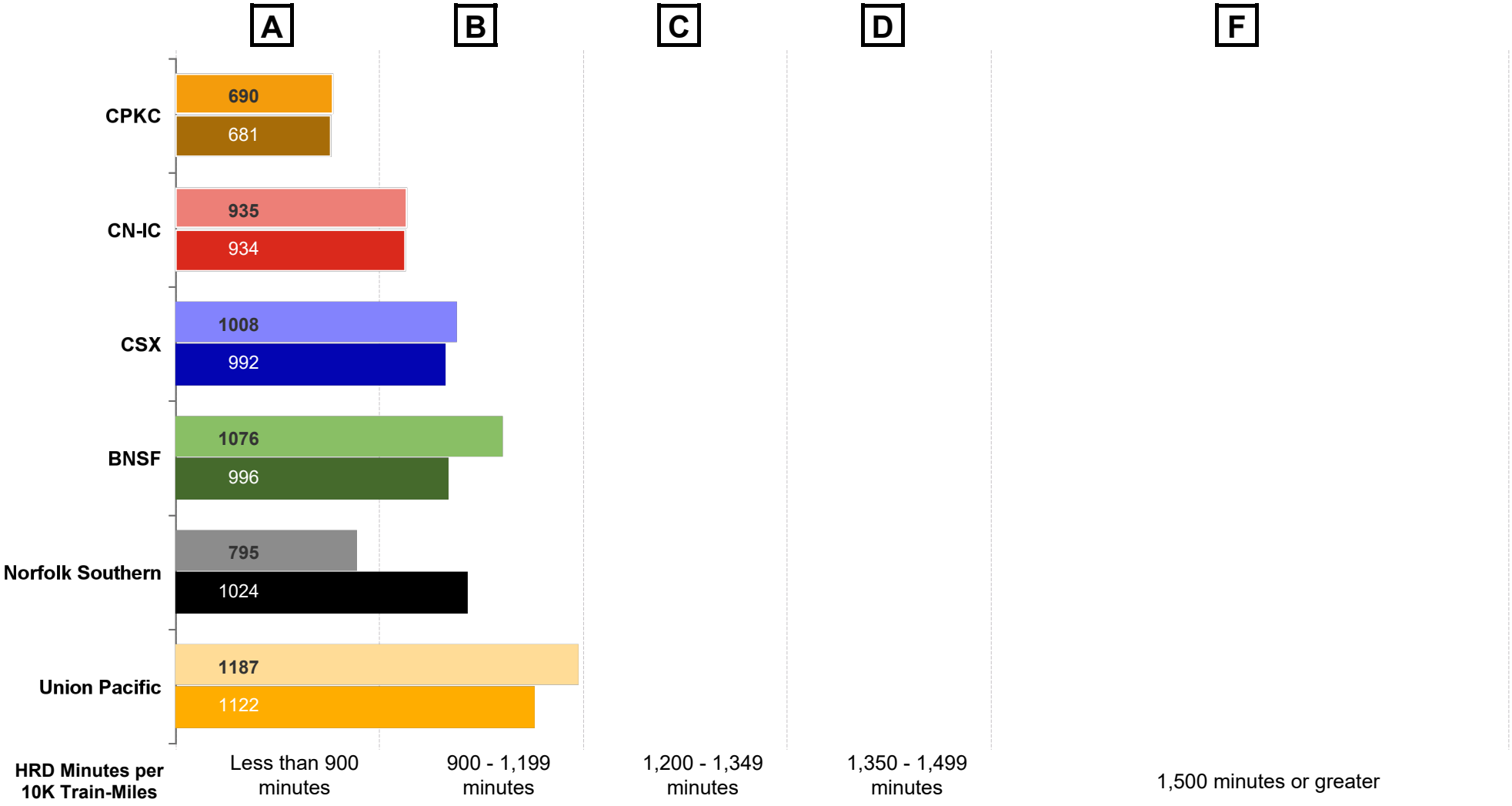
Amtrak Train Performance on Host Railroads

Data through October 2024

Host Railroad Report Card Update

Current Month and 1 Year Snapshot

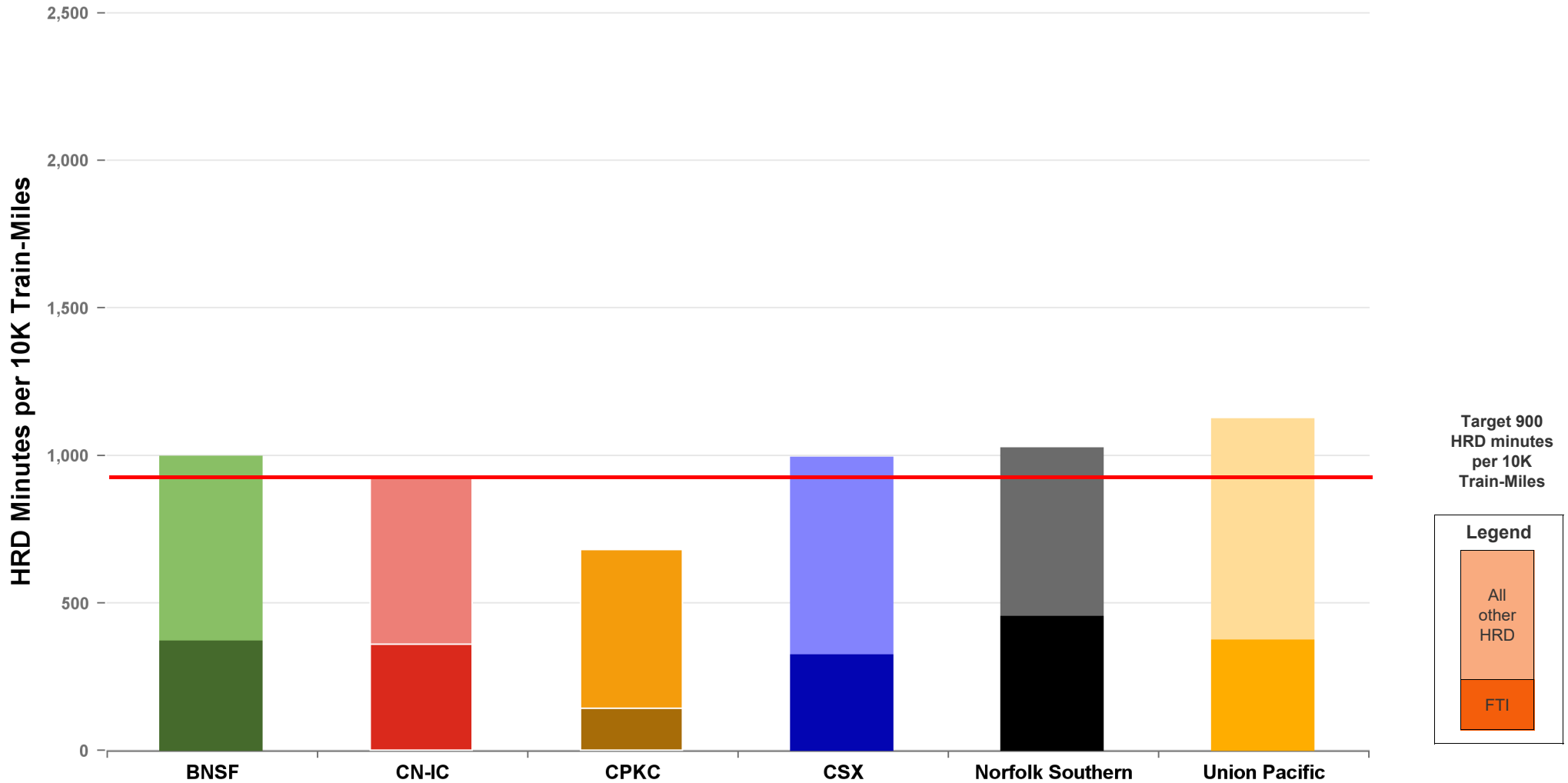
A monthly update of the Host Railroad Report Card, which grades the six major host railroads based on host responsible delay (HRD) minutes per 10,000 train-miles for the current month (lighter shade) and the most recent 12 months.



Total Host-Responsible Delays

1 Year Snapshot

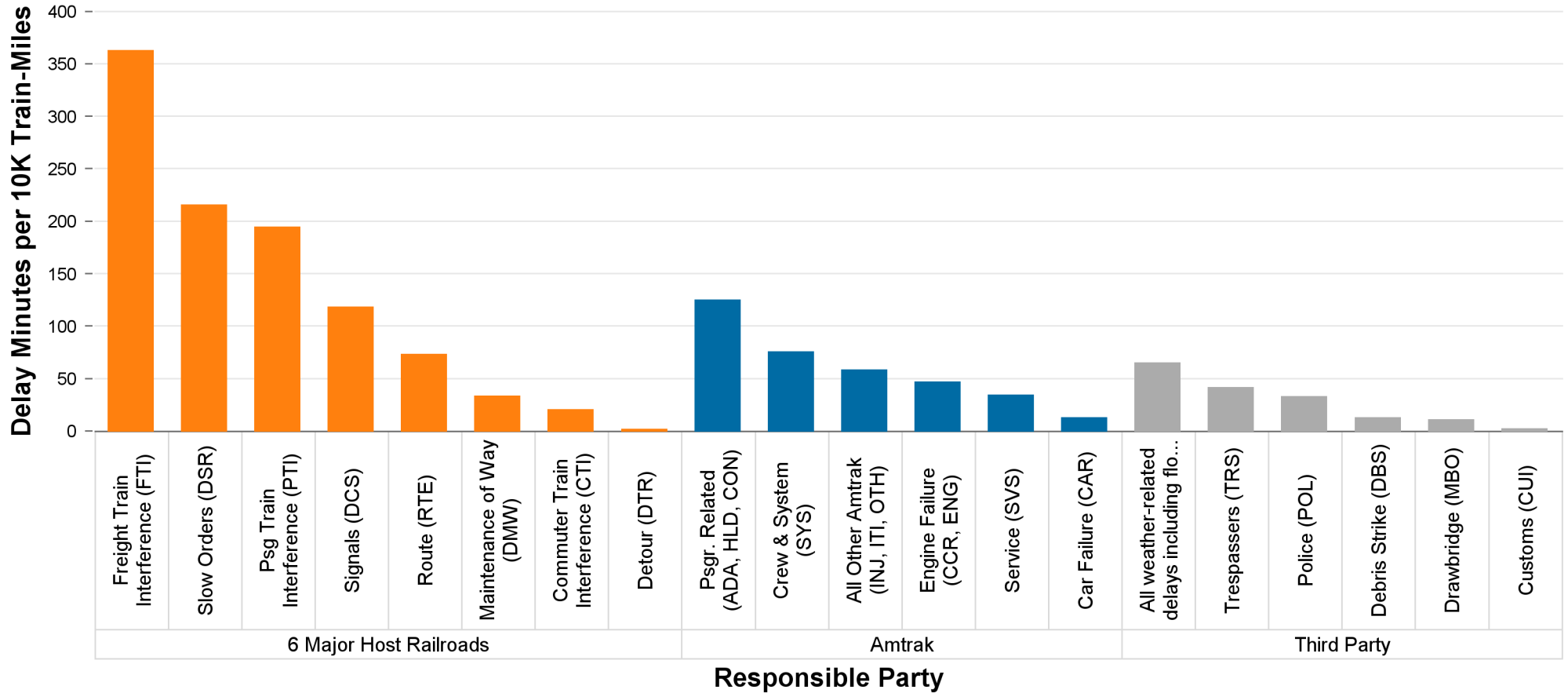
Total host-responsible delay (HRD) minutes per 10,000 train-miles incurred by Amtrak trains on the six major host railroads, with delays attributable to freight train interference (FTI) shaded.



Delays to Amtrak Trains by Responsible Party

1 Year Snapshot

Delay minutes per 10,000 train-miles on the six major host railroads categorized by delay type and responsible party.

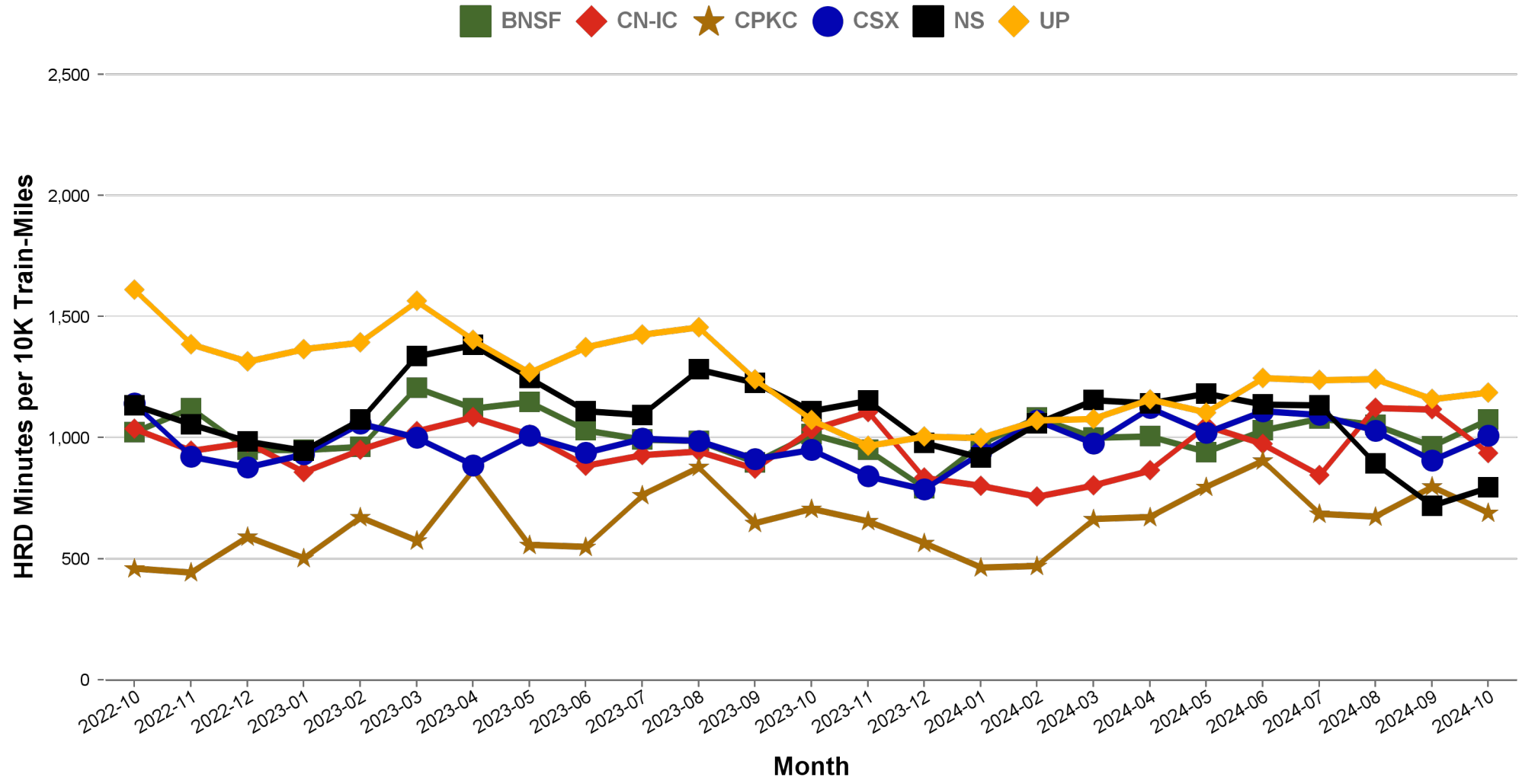


Responsible Party	6 Major Host Railroads	Amtrak	Third Party
Delay Minutes per 10K Train-Miles	1017	352	167
Percentage of Total Delays	66.2%	22.9%	10.9%

Total Host-Responsible Delays

2 Year Snapshot

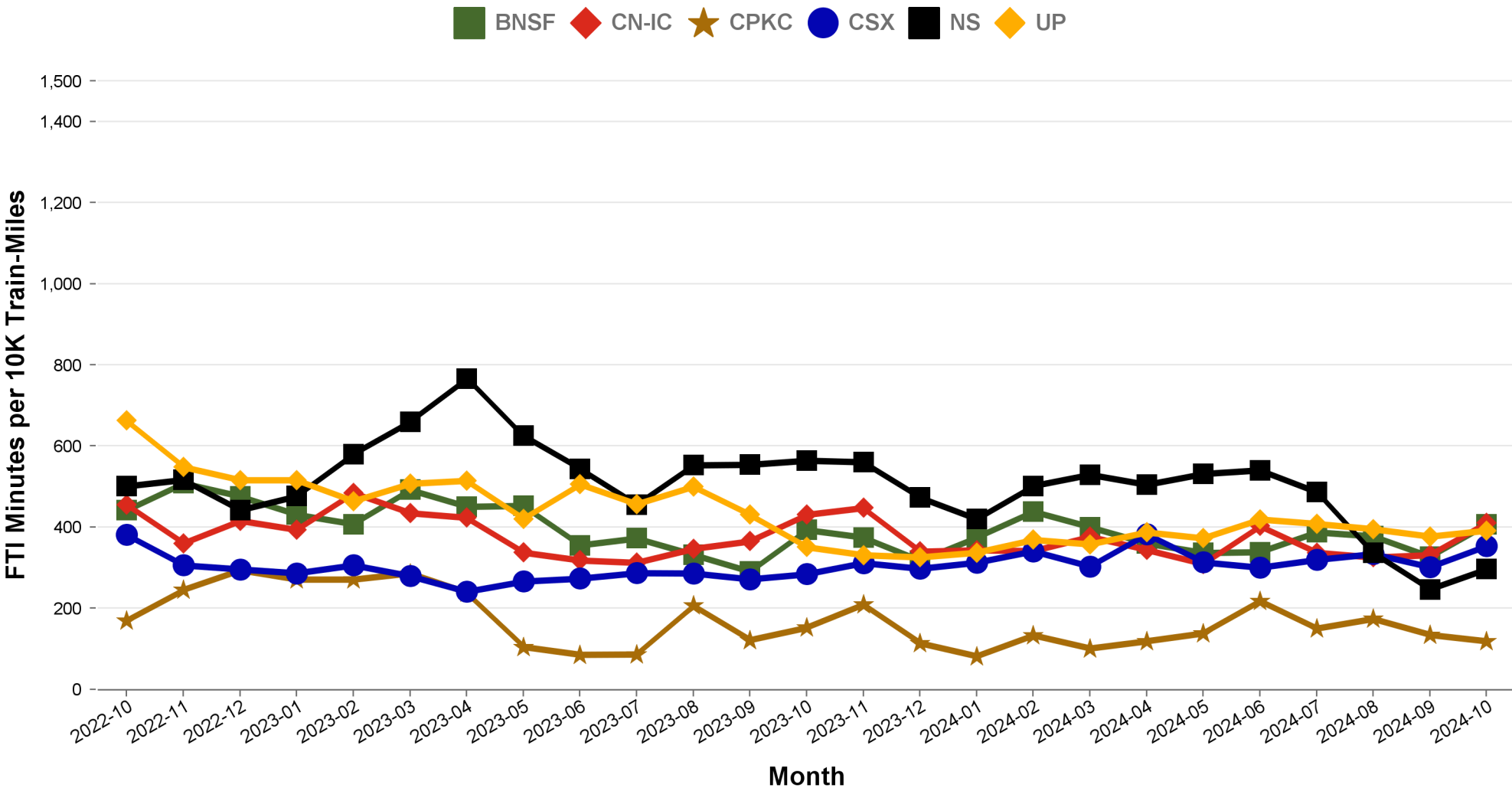
Total host-responsible delay (HRD) minutes per 10,000 train-miles incurred by Amtrak trains on each of the six major host railroads for the most recent two years.



Freight Train Interference Delays

2 Year Snapshot

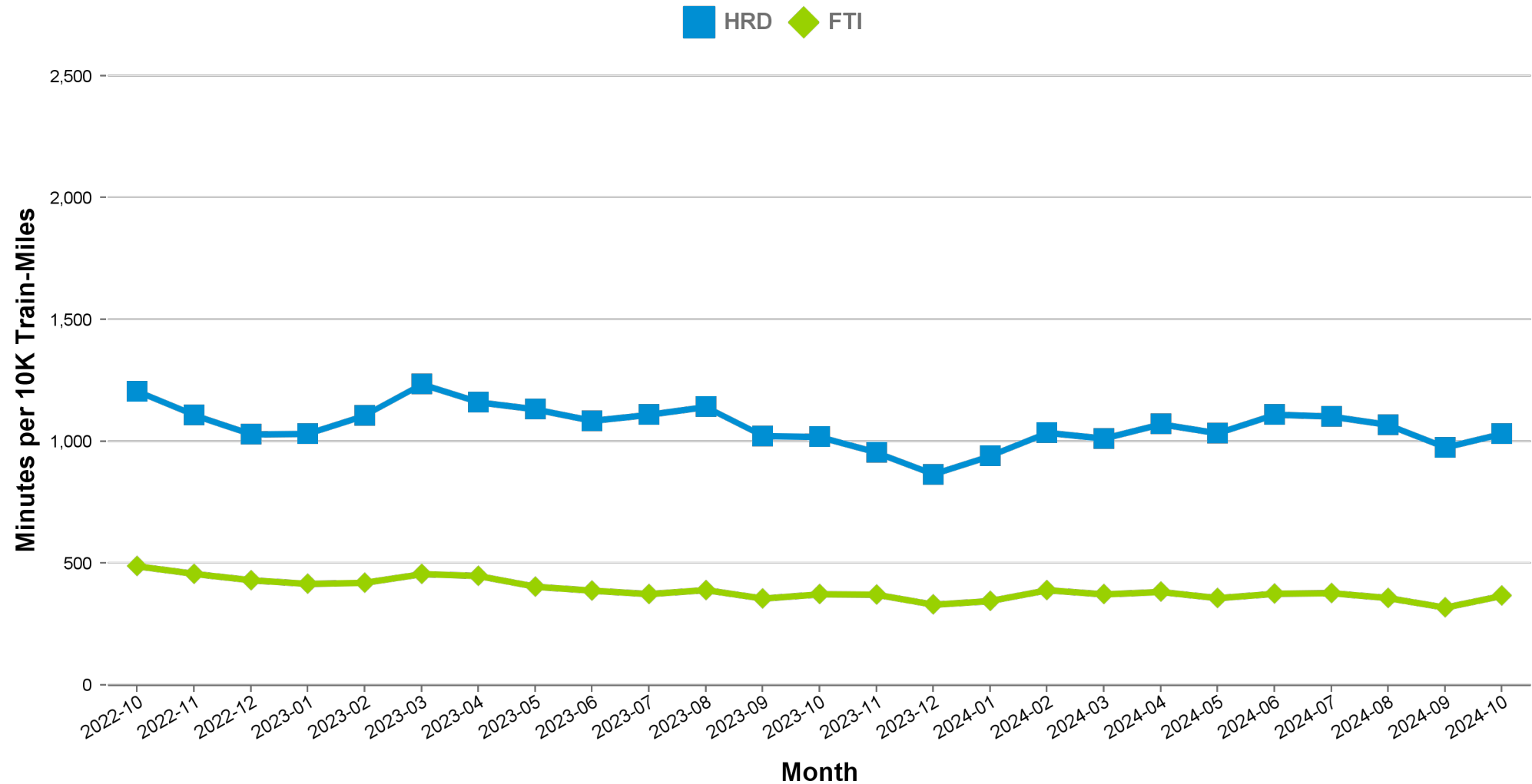
Total delay minutes per 10,000 train-miles attributable to freight train interference (FTI) incurred by Amtrak trains on each of the six major host railroads for the most recent two years.



Aggregated Host Railroad Performance Trend

2 Year Snapshot

Total host-responsible delay (HRD) and freight interference (FTI) minutes per 10,000 train-miles incurred by Amtrak trains, aggregated for the six major host railroads for the most recent two years.



Minutes of Delay per 10K Train Miles by Host for October 2024

Host	Service	Total Host Responsible Delays		Largest Two Delay Categories - Current Month				Route Miles
		Current Month	Most Recent 12 Months	#1		#2		
Target		900	900					
BNSF	California Zephyr	755	768	DSR	223	FTI	218	1027
	Carl Sandburg / Illinois Zephyr	717	809	DSR	337	FTI	130	257
	Cascades	1257	1425	FTI	390	DSR	319	317
	Coast Starlight	1261	1293	FTI	408	RTE	296	158
	Empire Builder	903	805	FTI	572	DSR	99	2147
	Heartland Flyer	1727	1516	DSR	1008	FTI	517	236
	Pacific Surfliner	3305	1625	DCS	860	FTI	748	22
	San Joaquins	1005	1090	PTI	421	FTI	268	284
	Southwest Chief	1071	833	FTI	465	DSR	315	2206
	Sunset Ltd	800	1075	DSR	459	FTI	141	190
	Texas Eagle	2459	2053	DSR	1677	FTI	627	116
CN-IC	Blue Water	379	511	FTI	294	DSR	70	159
	City Of New Orleans	842	846	FTI	379	DSR	157	930
	Illini / Saluki	486	706	PTI	138	DSR	130	304
	Lincoln Service	2903	2102	FTI	1812	DSR	539	35
	Lincoln / Missouri	2683	2646	FTI	1557	DSR	568	35
	Texas Eagle	1721	1789	FTI	1072	DSR	428	35
	Wolverine	2634	1739	DSR	1821	FTI	395	27
CPKC	Adirondack	1254	1027	PTI	657	DSR	298	178
	Borealis	711	893	DSR	217	FTI	159	376
	Empire Builder	650	688	FTI	194	DSR	136	384
	Ethan Allen Express	1463	1715	PTI	906	DSR	263	60
	Hiawatha	238	243	DCS	79	DSR	38	53
CSX	Auto Train	1529	1311	FTI	562	DSR	394	898
	Capitol Ltd	761	685	FTI	348	RTE	185	307
	Cardinal	859	750	FTI	507	DSR	138	703
	Carolinian	1637	1724	PTI	506	FTI	423	295
	Downeaster	999	665	PTI	440	DCS	171	107
	Lake Shore Ltd	750	702	FTI	358	DSR	141	741
	Maple Leaf	755	835	FTI	308	DSR	232	298
	New York - Niagara Falls	956	738	FTI	523	DSR	217	296
	Palmetto	1000	1015	FTI	384	PTI	278	659
	Pere Marquette	157	222	DSR	76	FTI	52	135
	Richmond / Newport News / Norfolk	1193	1430	FTI	316	DSR	250	189
	Silver Meteor	810	914	FTI	324	PTI	186	1152
	Silver Star	946	984	PTI	250	FTI	239	1209
NS	Blue Water	1323	1917	FTI	796	DSR	228	39
	Capitol Ltd	900	1084	FTI	414	RTE	225	481
	Cardinal	1246	1436	PTI	753	FTI	175	79
	Carolinian	724	792	PTI	361	DCS	131	202
	Crescent	824	1223	FTI	356	DCS	178	1141
	Lake Shore Ltd	1062	1071	FTI	579	RTE	189	339
	Pennsylvanian	550	758	FTI	192	RTE	170	249
	Pere Marquette	1115	1592	FTI	419	PTI	352	39
	Piedmont	740	789	PTI	270	FTI	146	173
	Richmond / Newport News / Norfolk	413	914	DCS	116	RTE	108	81
	Roanoke	544	755	PTI	336	FTI	114	216
	Silver Star	429	583	FTI	164	DCS	133	28
	Wolverine	1511	1951	FTI	731	DSR	221	39
UP	California Zephyr	1039	1096	FTI	361	DSR	309	1381
	Capitol Corridor	683	593	PTI	232	DCS	179	171
	Cascades	1710	1643	PTI	597	DSR	461	125
	Coast Starlight	1439	1438	DSR	407	PTI	324	1162
	Lincoln Service	1137	982	FTI	569	PTI	296	231
	Lincoln / Missouri	1056	843	FTI	498	PTI	235	502
	Missouri	1171	799	FTI	677	PTI	334	271
	Pacific Surfliner	1484	1385	PTI	627	DCS	503	174
	San Joaquins	1130	1277	PTI	511	FTI	311	88
	Sunset Ltd	1198	1265	FTI	579	DSR	207	1784
	Texas Eagle	1561	1396	FTI	764	DSR	409	1073

Minutes of Delay per 10K Train Miles by Host for October 2024

Host	Service	Total Host Responsible Delays		Largest Two Delay Categories - Current Month				Route Miles
		Current Month	Most Recent 12 Months	#1		#2		
Target		900	900					
Amtrak	Adirondack	426	493	CTI	139	PTI	123	100
	Blue Water	560	542	DSR	448	DMW	39	99
	Ethan Allen Express	195	346	PTI	52	CTI	47	100
	Maple Leaf	192	306	CTI	62	RTE	47	109
	New York - Albany	200	300	PTI	62	CTI	50	81
	New York - Niagara Falls	396	518	PTI	121	DCS	103	109
	Wolverine	810	747	DSR	446	PTI	206	99
BBrRR	Cardinal	1252	1322	FTI	577	PTI	457	132
CN-Canada	Adirondack	5200	6811	DSR	2413	DMW	918	49
Fla DOT	Silver Meteor	995	1236	CTI	688	DSR	146	68
	Silver Star	745	1077	CTI	599	DSR	101	68
FR	Auto Train	5453	5130	CTI	2840	DSR	2329	16
	Silver Meteor	2576	3575	DSR	805	CTI	785	61
	Silver Star	1890	2522	DSR	816	CTI	737	61
MADOT	Springfield Shuttles	713	783	FTI	261	DSR	259	36
	Vermonters	502	707	DCS	222	DSR	150	50
MBTA	Downeaster	1920	1136	CTI	613	DCS	422	38
Metra	Borealis	1087	1217	CTI	645	DSR	149	33
	Empire Builder	1568	2163	CTI	1280	DCS	99	29
	Hiawatha	1500	1991	CTI	1066	DCS	125	29
MIDOT	Blue Water	81	403	PTI	81		0	22
	Wolverine	602	620	PTI	412	FTI	84	134
MNRR	Acela	1314	1589	DSR	798	CTI	346	56
	Adirondack	1276	1177	CTI	906	RTE	152	64
	Ethan Allen Express	1494	1185	CTI	775	DSR	332	64
	Lake Shore Ltd	1274	1022	CTI	466	DSR	390	64
	Maple Leaf	798	796	DSR	319	CTI	235	64
	New York - Albany	1254	1046	CTI	722	DSR	299	64
	New York - Niagara Falls	1526	1328	CTI	929	DSR	260	64
	Richmond / Newport News / Norfolk	1452	1705	DSR	682	CTI	633	56
Vermonters	3263	2731	DSR	1673	DET	939	56	
NECR	Vermonters	588	1196	DSR	500	FTI	57	192
NMDOT	Southwest Chief	2968	3068	CTI	1996	PTI	602	80
SCRRR	Coast Starlight	1535	1640	PTI	1062	CTI	351	48
	Pacific Surfliner	1330	1019	PTI	416	CTI	362	95
SDNRR	Pacific Surfliner	1271	943	CTI	570	PTI	281	60
Sounder	Cascades	1096	956	PTI	763	CTI	252	20
	Coast Starlight	2210	2050	PTI	1298	CTI	734	20
TRE	Texas Eagle	956	558	CTI	799	RTE	123	33
VTR	Ethan Allen Express	620	684	DSR	594	DCS	26	91

The numbers included in this document are preliminary and are for informational purposes only.

Excludes hosts with fewer than 15 route miles.

Delays on the Amtrak-owned portion of the Northeast Corridor are shown in a separate report, with tighter delay standards.

Northeast Regional: Roanoke includes all trains between Roanoke and points on the NEC; Richmond / Newport News / Norfolk includes all trains between these locations and points on the NEC.

Minutes of Delay per 10K Train Miles by Service for October 2024

Service		Host	Total Host Responsible Delays		Largest Two Delay Categories - Current Month				Route Miles
			Current	Most	#1	#2			
Target			900	900					
Acela									
Acela		MNRR	1314	1589	DSR	798	CTI	346	56
All Other NEC Corridor Routes									
Northeast Regional	Richmond / Newport News / Norfolk	CSX	1193	1430	FTI	316	DSR	250	189
		NS	413	914	DCS	116	RTE	108	81
		MNRR	1452	1705	DSR	682	CTI	633	56
	Roanoke	NS	544	755	PTI	336	FTI	114	216
	Springfield Shuttles	MADOT	713	783	FTI	261	DSR	259	36
Non-NEC Corridor Routes									
Borealis		CPKC	711	893	DSR	217	FTI	159	376
		Metra	1087	1217	CTI	645	DSR	149	33
Capitol Corridor		UP	683	593	PTI	232	DCS	179	171
Carolinian		CSX	1637	1724	PTI	506	FTI	423	295
		NS	724	792	PTI	361	DCS	131	202
Cascades		BNSF	1257	1425	FTI	390	DSR	319	317
		UP	1710	1643	PTI	597	DSR	461	125
		Sounder	1096	956	PTI	763	CTI	252	20
Downeaster		CSX	999	665	PTI	440	DCS	171	107
		MBTA	1920	1136	CTI	613	DCS	422	38
Empire	Adirondack	CPKC	1254	1027	PTI	657	DSR	298	178
		Amtrak	426	493	CTI	139	PTI	123	100
		CN-Canada	5200	6811	DSR	2413	DMW	918	49
		MNRR	1276	1177	CTI	906	RTE	152	64
	Ethan Allen Express	CPKC	1463	1715	PTI	906	DSR	263	60
		Amtrak	195	346	PTI	52	CTI	47	100
		MNRR	1494	1185	CTI	775	DSR	332	64
		VTR	620	684	DSR	594	DCS	26	91
	Maple Leaf	CSX	755	835	FTI	308	DSR	232	298
		Amtrak	192	306	CTI	62	RTE	47	109
		MNRR	798	796	DSR	319	CTI	235	64
	New York - Albany	Amtrak	200	300	PTI	62	CTI	50	81
		MNRR	1254	1046	CTI	722	DSR	299	64
	New York - Niagara Falls	CSX	956	738	FTI	523	DSR	217	296
		Amtrak	396	518	PTI	121	DCS	103	109
		MNRR	1526	1328	CTI	929	DSR	260	64
Heartland Flyer		BNSF	1727	1516	DSR	1008	FTI	517	236
Hiawatha		CPKC	238	243	DCS	79	DSR	38	53
		Metra	1500	1991	CTI	1066	DCS	125	29
Illinois	Carl Sandburg / Illinois Zephyr	BNSF	717	809	DSR	337	FTI	130	257
	Illini / Saluki	CN-IC	486	706	PTI	138	DSR	130	304
	Lincoln Service	CN-IC	2903	2102	FTI	1812	DSR	539	35
		UP	1137	982	FTI	569	PTI	296	231
Lincoln / Missouri		CN-IC	2683	2646	FTI	1557	DSR	568	35
		UP	1056	843	FTI	498	PTI	235	502
Michigan	Blue Water	CN-IC	379	511	FTI	294	DSR	70	159
		NS	1323	1917	FTI	796	DSR	228	39
		Amtrak	560	542	DSR	448	DMW	39	99
		MIDOT	81	403	PTI	81		0	22
	Pere Marquette	CSX	157	222	DSR	76	FTI	52	135
		NS	1115	1592	FTI	419	PTI	352	39
	Wolverine	CN-IC	2634	1739	DSR	1821	FTI	395	27
		NS	1511	1951	FTI	731	DSR	221	39
		Amtrak	810	747	DSR	446	PTI	206	99
		MIDOT	602	620	PTI	412	FTI	84	134
Missouri		UP	1171	799	FTI	677	PTI	334	271
Pacific Surfliner		BNSF	3305	1625	DCS	860	FTI	748	22
		UP	1484	1385	PTI	627	DCS	503	174
		SCRRA	1330	1019	PTI	416	CTI	362	95
		SDNRR	1271	943	CTI	570	PTI	281	60
Pennsylvanian		NS	550	758	FTI	192	RTE	170	249
Piedmont		NS	740	789	PTI	270	FTI	146	173
San Joaquins		BNSF	1005	1090	PTI	421	FTI	268	284
		UP	1130	1277	PTI	511	FTI	311	88
Vermont		MADOT	502	707	DCS	222	DSR	150	50
		MNRR	3263	2731	DSR	1673	DET	939	56
		NECR	588	1196	DSR	500	FTI	57	192

Minutes of Delay per 10K Train Miles by Service for October 2024

Service	Host	Total Host Responsible Delays		Largest Two Delay Categories - Current Month				Route Miles
		Current	Most	#1		#2		
Target		900	900					
Long-Distance Routes								
Auto Train	CSX	1529	1311	FTI	562	DSR	394	898
	FR	5453	5130	CTI	2840	DSR	2329	16
California Zephyr	BNSF	755	768	DSR	223	FTI	218	1027
	UP	1039	1096	FTI	361	DSR	309	1381
Capitol Ltd	CSX	761	685	FTI	348	RTE	185	307
	NS	900	1084	FTI	414	RTE	225	481
Cardinal	CSX	859	750	FTI	507	DSR	138	703
	NS	1246	1436	PTI	753	FTI	175	79
	BBrRR	1252	1322	FTI	577	PTI	457	132
City Of New Orleans	CN-IC	842	846	FTI	379	DSR	157	930
Coast Starlight	BNSF	1261	1293	FTI	408	RTE	296	158
	UP	1439	1438	DSR	407	PTI	324	1162
	SCRRA	1535	1640	PTI	1062	CTI	351	48
	Sounder	2210	2050	PTI	1298	CTI	734	20
Crescent	NS	824	1223	FTI	356	DCS	178	1141
Empire Builder	BNSF	903	805	FTI	572	DSR	99	2147
	CPKC	650	688	FTI	194	DSR	136	384
	Metra	1568	2163	CTI	1280	DCS	99	29
Lake Shore Ltd	CSX	750	702	FTI	358	DSR	141	741
	NS	1062	1071	FTI	579	RTE	189	339
	MNRR	1274	1022	CTI	466	DSR	390	64
Palmetto	CSX	1000	1015	FTI	384	PTI	278	659
Silver Meteor	CSX	810	914	FTI	324	PTI	186	1152
	Fla DOT	995	1236	CTI	688	DSR	146	68
	FR	2576	3575	DSR	805	CTI	785	61
Silver Star	CSX	946	984	PTI	250	FTI	239	1209
	NS	429	583	FTI	164	DCS	133	28
	Fla DOT	745	1077	CTI	599	DSR	101	68
	FR	1890	2522	DSR	816	CTI	737	61
Southwest Chief	BNSF	1071	833	FTI	465	DSR	315	2206
	NMDOT	2968	3068	CTI	1996	PTI	602	80
Sunset Ltd	BNSF	800	1075	DSR	459	FTI	141	190
	UP	1198	1265	FTI	579	DSR	207	1784
Texas Eagle	BNSF	2459	2053	DSR	1677	FTI	627	116
	CN-IC	1721	1789	FTI	1072	DSR	428	35
	UP	1561	1396	FTI	764	DSR	409	1073
	TRE	956	558	CTI	799	RTE	123	33

The numbers included in this document are preliminary and are for informational purposes only.

Excludes hosts with fewer than 15 route miles.

Delays on the Amtrak-owned portion of the Northeast Corridor are shown in a separate report, with tighter delay standards.

Northeast Regional: Roanoke includes all trains between Roanoke and points on the NEC; Richmond / Newport News /

Norfolk includes all trains between these locations and points on the NEC.

Host Railroad Report - All-Stations and Customer OTP for October 2024

Service	All-Stations OTP		Customer OTP		Avg Mins Late per Late Rider**	
	Current Month	Most Recent 12 Months	Current Month	Most Recent 12 Months	Current Month	Most Recent 12 Months
Amtrak System	74.5%	75.6%	73.2%	74.6%	48	54
NEC Corridor Routes	80.3%	82.0%	76.6%	78.1%	37	43
Minimum Standard			80.0%	80.0%		
Acela*	79.2%	80.8%	75.7%	77.3%	32	35
Keystone	87.8%	92.7%	85.6%	91.1%	27	35
Northeast Regional	78.2%	78.8%	74.9%	75.6%	40	46
On Spine Northeast Regional	81.0%	82.5%	77.3%	80.0%	40	44
Richmond / Newport News / Norfolk	70.7%	71.8%	69.3%	68.5%	39	47
Roanoke	77.5%	76.3%	75.7%	72.6%	44	50
Springfield Shuttles	90.0%	87.5%	90.6%	87.5%	36	37
Non-NEC Corridor Routes	77.6%	79.5%	72.4%	75.8%	42	45
Minimum Standard			80.0%	80.0%		
Borealis	69.6%	67.6%	59.2%	53.1%	54	47
Capitol Corridor	90.9%	91.5%	86.6%	88.8%	44	39
Carolinian	43.7%	52.0%	46.0%	48.9%	47	62
Cascades	70.9%	64.5%	62.0%	56.4%	43	47
Downeaster	74.2%	87.8%	58.3%	79.7%	39	36
Empire	76.7%	80.6%	76.1%	81.0%	36	43
Adirondack	70.0%	77.0%	72.8%	76.2%	29	36
Berkshire Flyer	-	68.0%	-	69.9%	-	44
Ethan Allen Express	76.2%	72.8%	70.1%	68.0%	27	38
Maple Leaf	80.2%	74.6%	85.5%	77.0%	33	47
New York - Albany	89.1%	90.1%	85.2%	88.8%	36	40
New York - Niagara Falls	61.1%	77.4%	55.3%	75.4%	40	48
Heartland Flyer	66.2%	71.9%	62.0%	69.3%	32	45
Hiawatha	93.0%	89.7%	91.0%	86.3%	46	37
Illinois	85.7%	79.4%	81.6%	77.3%	37	49
Carl Sandburg / Illinois Zephyr	91.9%	82.3%	94.8%	83.7%	63	49
Illini / Saluki	93.4%	83.5%	93.1%	83.9%	35	61
Lincoln Service	75.1%	74.1%	68.4%	70.6%	36	45
Lincoln / Missouri	44.4%	61.1%	44.2%	59.4%	59	49
Michigan	73.3%	70.4%	74.3%	73.0%	38	44
Blue Water	82.4%	79.2%	79.2%	75.5%	35	45
Pere Marquette	96.1%	88.6%	92.3%	85.0%	38	38
Wolverine	67.7%	65.5%	68.6%	69.3%	39	45
Missouri	76.1%	80.6%	72.8%	82.8%	57	48
Pacific Surfliner	75.7%	82.8%	70.8%	82.3%	42	42
Pennsylvanian	66.7%	69.7%	62.5%	69.2%	31	41
Piedmont	82.2%	82.3%	71.9%	74.7%	33	41
San Joaquins	81.7%	77.1%	78.0%	73.1%	45	45
Vermonteer	67.3%	67.3%	64.5%	68.7%	42	46
Long-Distance Routes	55.9%	53.9%	59.8%	57.2%	90	89
Minimum Standard			80.0%	80.0%		
Auto Train	37.1%	69.9%	22.0%	54.0%	163	95
California Zephyr	59.5%	45.7%	63.4%	49.9%	71	106
Capitol Ltd	69.0%	66.6%	74.0%	71.1%	55	61
Cardinal	57.2%	57.7%	61.0%	57.5%	56	72
City Of New Orleans	65.6%	65.4%	77.8%	77.8%	79	82
Coast Starlight	52.9%	53.3%	51.1%	55.9%	88	85
Crescent	73.0%	56.2%	78.3%	60.1%	66	72
Empire Builder	53.8%	55.4%	57.4%	56.3%	125	108
Lake Shore Ltd	77.2%	75.6%	80.2%	76.7%	52	62
Palmetto	64.5%	65.2%	68.0%	65.0%	40	54
Silver Meteor	51.4%	49.0%	57.3%	46.3%	69	85
Silver Star	48.6%	43.4%	57.5%	40.3%	62	80
Southwest Chief	21.8%	33.0%	23.2%	32.6%	139	126
Sunset Ltd	60.7%	51.8%	67.4%	60.5%	70	109
Texas Eagle	51.2%	55.8%	54.0%	61.6%	67	90

The numbers included in this document are preliminary and are for informational purposes only.

Northeast Regional: Roanoke includes all trains between Roanoke and points on the NEC; Richmond/Newport News/Norfolk includes all trains between these locations and points on the NEC.

* Acela on-time performance target is 90.0%

** Excludes on-time Customers



Host Railroad Responsible Delays

Code	Code Description	Explanation
CTI	Commuter Train Interference	Delays for meeting or following commuter trains
DCS	Signal Delays	Signal failure or All Other signal delays, wayside defect-detector false-alarms, defective road crossing protection, efficiency tests, drawbridge stuck open
DMW	Maintenance of Way	Maintenance of Way delays including holds for track repairs or MW foreman to clear
DSR	Slow Order Delays	Temporary slow orders, except heat or cold orders
DTR	Detour	Delays from detours
FTI	Freight Train Interference	Delays from freight trains
PTI	Passenger Train Interference	Delays for meeting or following All Other passenger trains
RTE	Routing	Routing-dispatching delays including diversions, late track bulletins, etc.

Amtrak Responsible Delays

Code	Code Description	Explanation
ADA	Passenger Related	All delays related to disabled passengers, wheel chair lifts, guide dogs, etc.
CAR	Car Failure	Mechanical failure on all types of cars
CCR	Cab Car Failure	Mechanical failure on Cab Cars
CON	Hold for Connection	Holding for connections from All Other trains or buses.
ENG	Locomotive Failure	Mechanical failure on engines.
HLD	Passenger Related	All delays related to passengers, checked-baggage, large groups, etc.
INJ	Injury Delay	Delay due to injured passengers or employees.
ITI	Initial Terminal Delay	Delay at initial terminal due to late arriving inbound trains causing late release of equipment.
OTH	Miscellaneous Delays	Lost-on-run, heavy trains, unable to make normal speed, etc.
SVS	Servicing	All switching and servicing delays
SYS	Crew & System	Delays related to crews including lateness, lone-engineer delays

Third-Party Delays

Code	Code Description	Explanation
CUI	Customs	U.S. and Canadian customs delays; Immigration-related delays
DBS	Debris	Debris strikes
MBO	Drawbridge Openings	Movable bridge openings for marine traffic where no bridge failure is involved
NOD	Unused Recovery Time	Wait for departure time
POL	Police-Related	Police/fire department holds on right-of-way or on-board trains
TRS	Trespassers	Trespasser incidents including road crossing accidents, trespasser / animal strikes, vehicle stuck on track ahead, bridge strikes
WTR	Weather-Related	All weather-related delays including floods/washouts, earthquake-related delays, heat or cold orders, slippery rail due to leaves

*These delay codes are applicable to Off-NEC routes only.