



Host Railroad Report

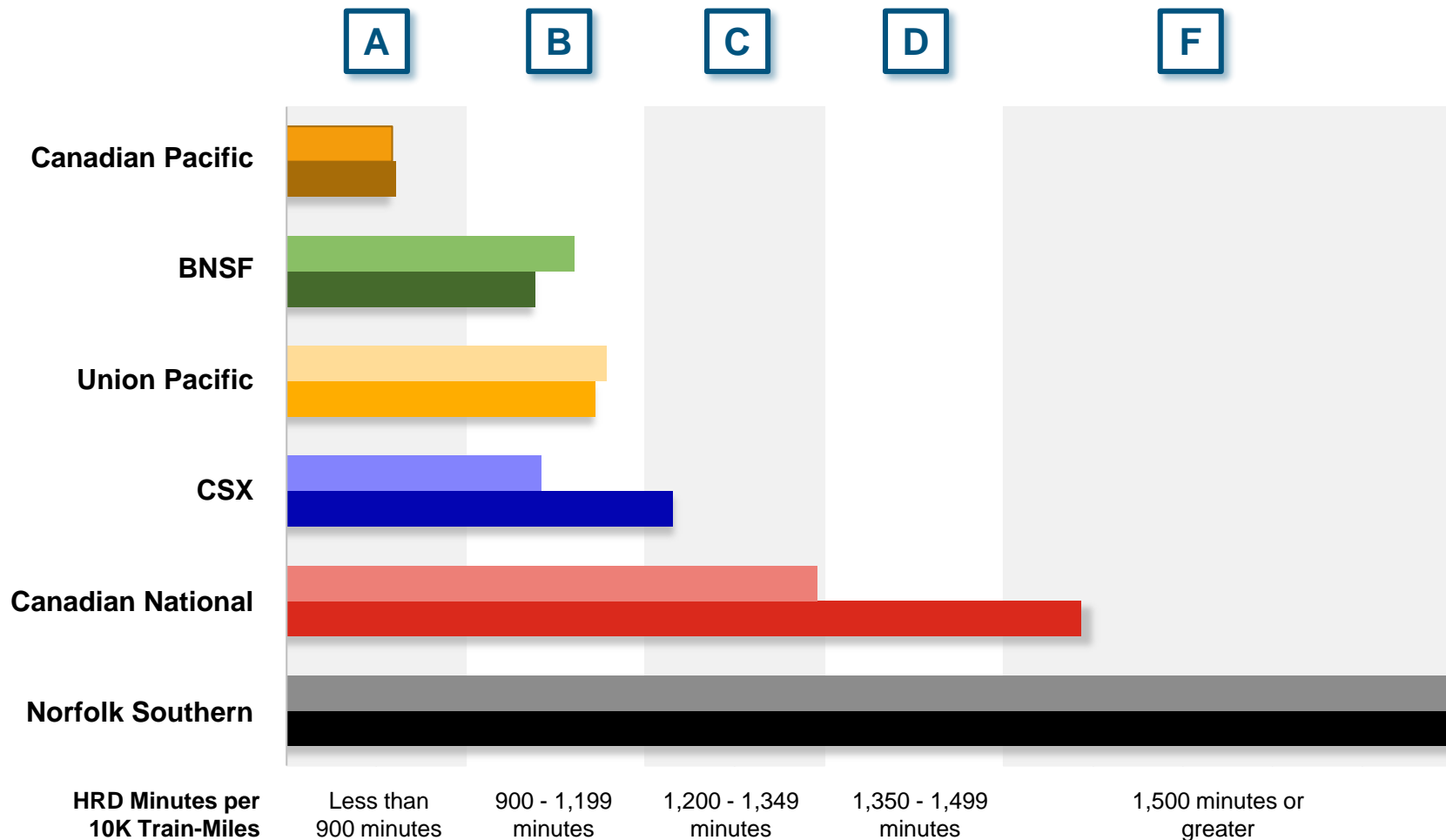
Amtrak Train Performance on Host Railroads

Data through November 2018

Host Railroad Report Card Update

Current Month and 1 Year Snapshot

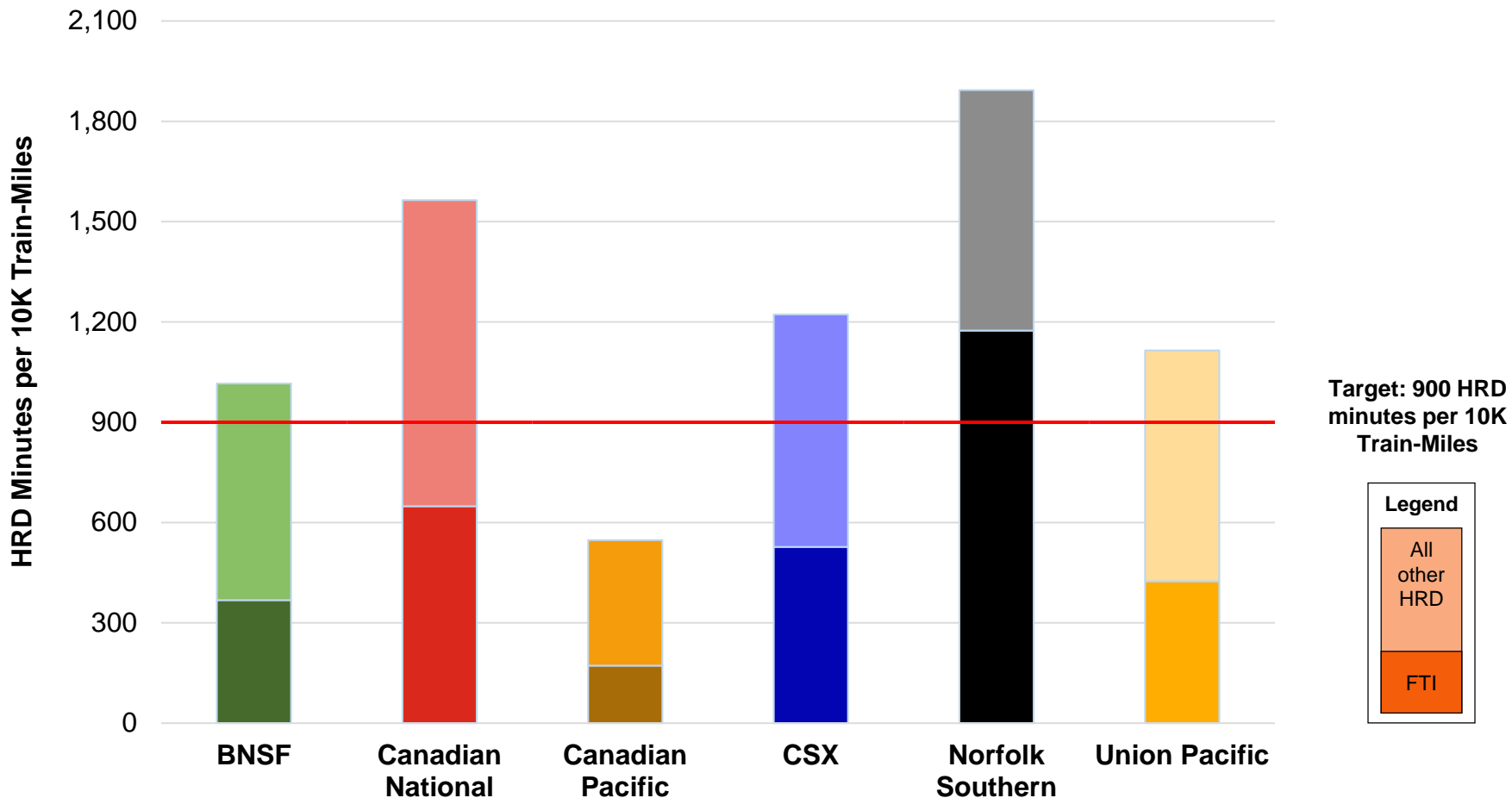
A monthly update of the Host Railroad Report Card, which grades the six major host railroads based on host responsible delay (HRD) minutes per 10,000 train-miles for the current month (lighter shade) and the most recent 12 months.



Total Host-Responsible Delays

1 Year Snapshot

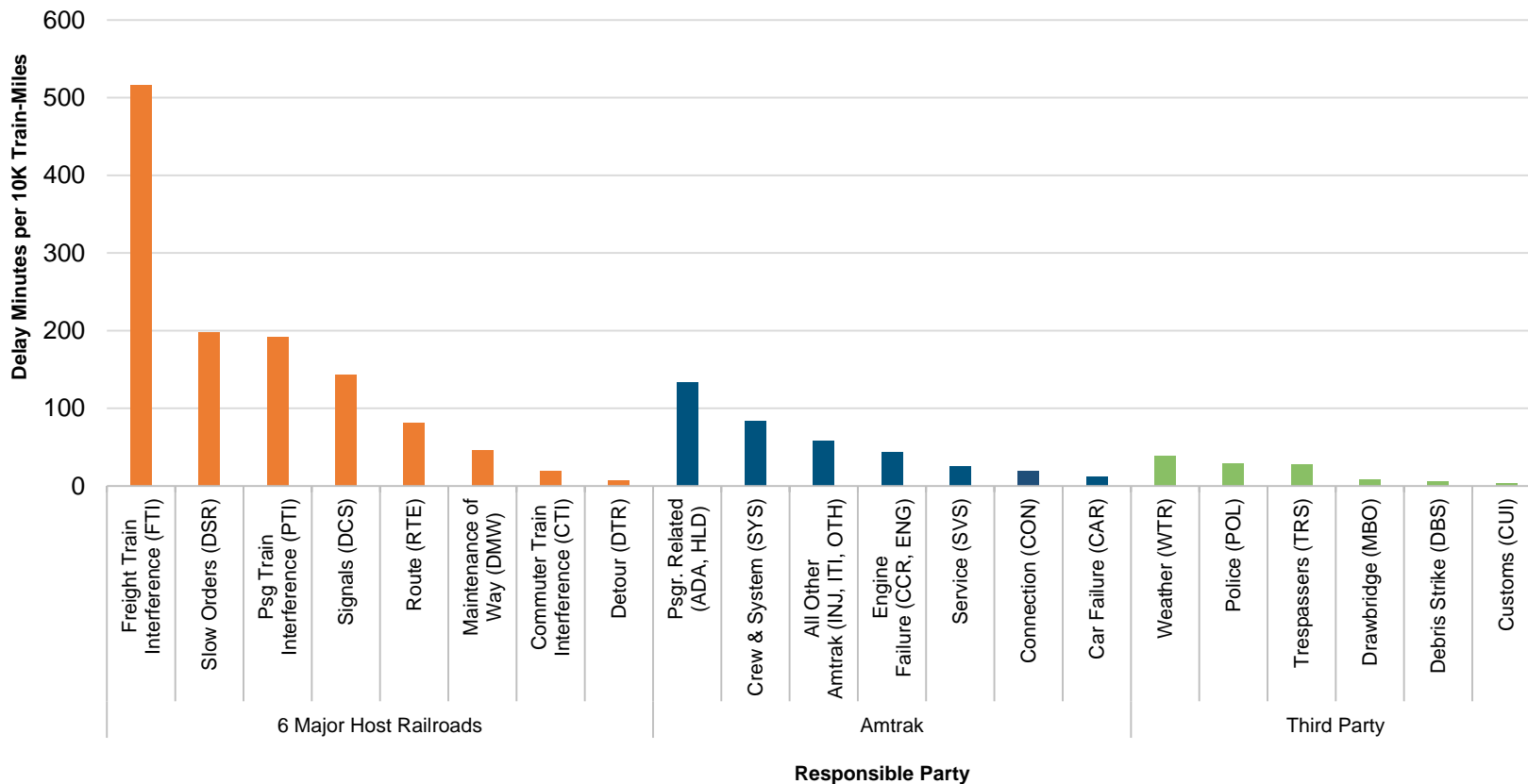
Total host-responsible delay (HRD) minutes per 10,000 train-miles incurred by Amtrak trains on the six major host railroads, with delays attributable to freight train interference (FTI) shaded.



Delays to Amtrak Trains by Responsible Party

1 Year Snapshot

Delay minutes per 10,000 train-miles on the six major host railroads categorized by delay type and responsible party.

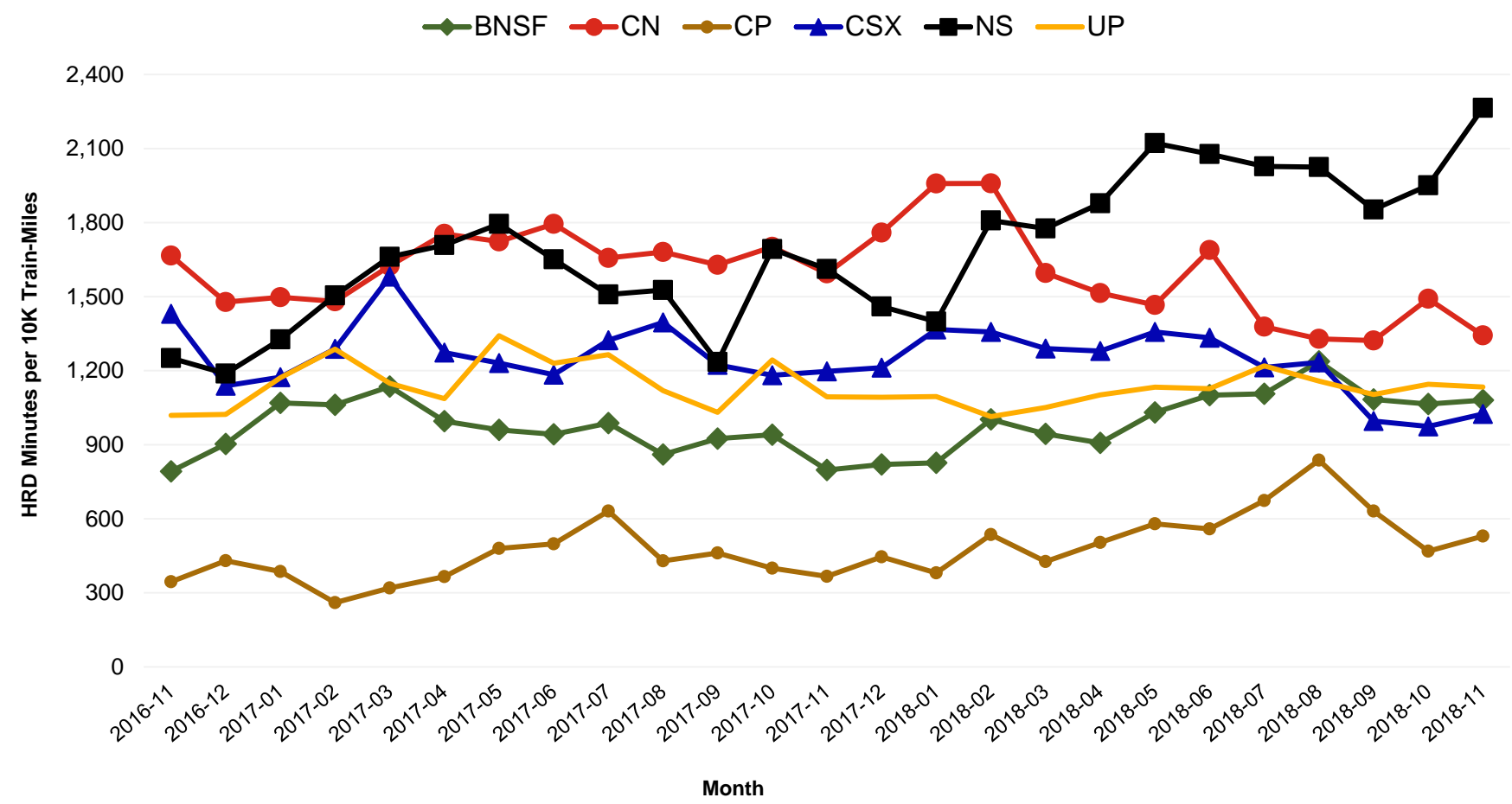


Responsible Party	6 Major Host Railroads	Amtrak	Third Party
Delay Minutes per 10K Train-Miles	1,202	374	114
Percentage of Total Delays	71%	22%	7%

Total Host-Responsible Delays

2 Year Snapshot

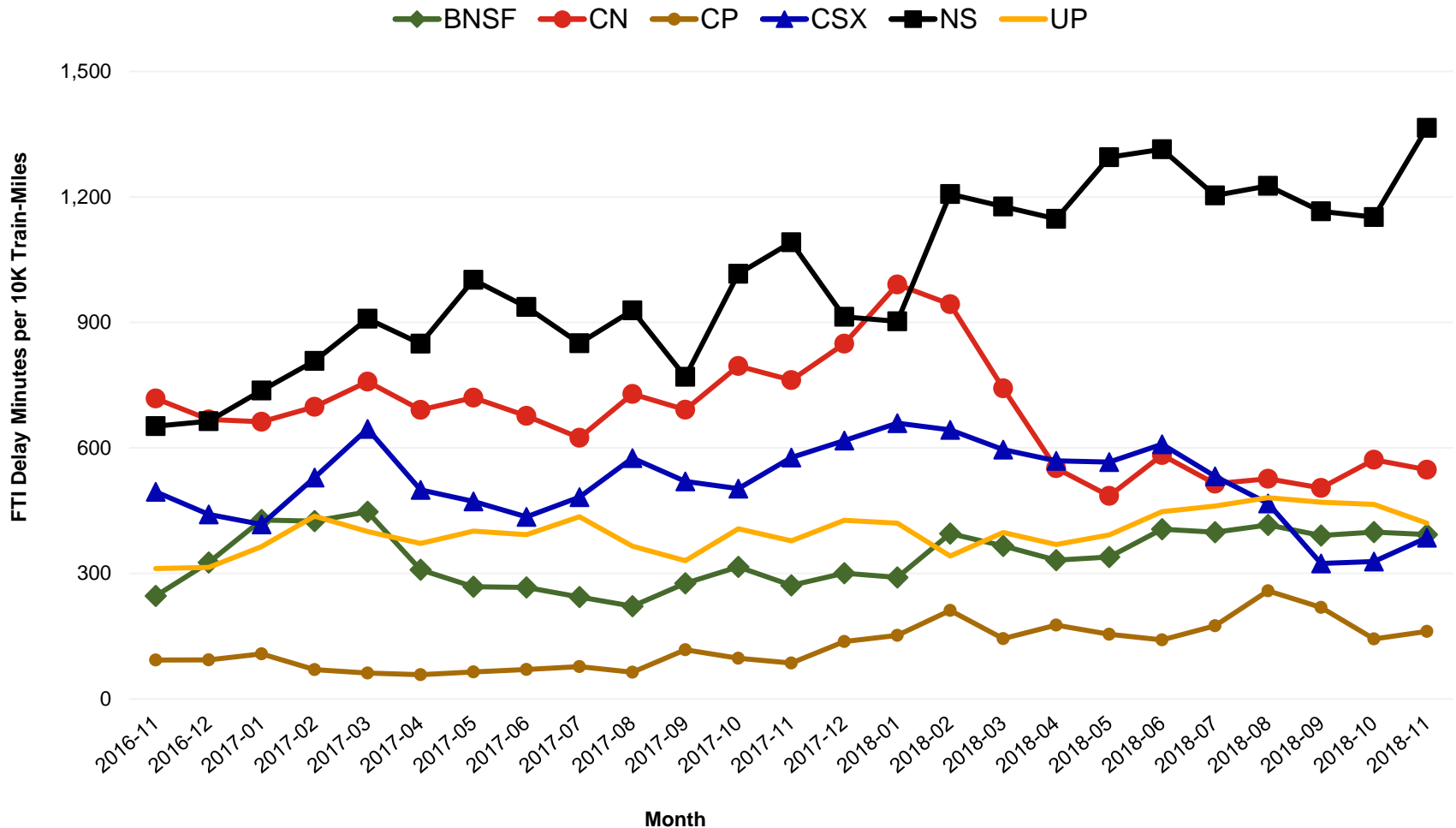
Total host-responsible delay (HRD) minutes per 10,000 train-miles incurred by Amtrak trains on each of the six major host railroads for the most recent two years.



Freight Train Interference Delays

2 Year Snapshot

Total delay minutes per 10,000 train-miles attributable to freight train interference (FTI) incurred by Amtrak trains on each of the six major host railroads for the most recent two years.



Delay Minutes per 10K Train Miles by Host for November 2018

Host	Service	Total Host Responsible Delays		Largest Two Delay Categories - Current Month				Route Miles
		Current Month	Most Recent 12 Months	#1		#2		
Target		900	900					
BNSF	California Zephyr	1397	1123	DSR	542	FTI	481	1027
	Carl Sandburg / Illinois Zephyr	926	613	FTI	415	DCS	214	257
	Cascades	1465	1368	DSR	437	FTI	433	343
	Coast Starlight	697	773	DSR	183	PTI	174	186
	Empire Builder	725	1036	FTI	399	DSR	183	2147
	Heartland Flyer	2273	2094	DSR	1196	FTI	829	236
	Pacific Surfliner	1911	1223	DCS	521	DSR	450	22
	San Joaquins	1005	1016	PTI	422	FTI	321	284
	Southwest Chief	873	709	FTI	315	DSR	187	2206
	Sunset Ltd	3062	1528	FTI	1221	DSR	1065	190
Texas Eagle	2241	1783	DSR	1037	FTI	893	116	
CN	Adirondack	3452	3273	DSR	1367	RTE	1071	49
	Blue Water	690	871	FTI	493	DCS	85	159
	City Of New Orleans	1014	1320	FTI	497	RTE	169	930
	Illini / Saluki	1540	1836	DCS	765	FTI	404	304
	Lincoln Service	1927	1672	FTI	1414	DCS	241	35
	Texas Eagle	2481	2640	FTI	1446	DCS	455	35
	Wolverine	2001	1799	DSR	727	DCS	573	27
CP	Adirondack	930	779	PTI	464	DCS	192	178
	Empire Builder	466	680	FTI	267	DSR	97	384
	Ethan Allen Express	921	746	DMW	349	PTI	217	60
	Hiawatha	342	267	FTI	89	DCS	65	53
CSX	Auto Train	1102	1292	FTI	509	PTI	298	898
	Capitol Ltd	1139	1222	DCS	321	FTI	307	307
	Cardinal	1137	1078	FTI	473	DCS	296	703
	Carolinian	1590	1727	FTI	480	PTI	434	295
	Hoosier	1210	989	FTI	615	DSR	269	175
	Lake Shore Ltd	1091	1094	FTI	593	RTE	201	741
	Maple Leaf	1140	1440	FTI	446	RTE	320	298
	New York - Niagara Falls	951	1186	FTI	439	RTE	223	296
	Palmetto	925	1133	FTI	360	PTI	252	659
	Pere Marquette	618	472	FTI	379	DCS	148	135
	Richmond / Newport News / Norfolk	1374	1785	FTI	291	PTI	270	189
	Silver Meteor	589	911	FTI	237	PTI	138	1152
	Silver Star	1003	1193	FTI	308	PTI	255	1209
NS	Blue Water	4259	3111	FTI	2883	DCS	587	39
	Capitol Ltd	3677	2596	FTI	2884	RTE	292	481
	Cardinal	2533	1445	FTI	797	DMW	516	79
	Carolinian	1610	1004	DSR	600	PTI	368	202
	Crescent	1886	1972	FTI	1056	DCS	309	1141
	Lake Shore Ltd	3893	2944	FTI	2555	PTI	802	339
	Lynchburg	966	726	FTI	538	PTI	129	216
	Pennsylvanian	1545	1358	FTI	1032	DCS	218	249
	Pere Marquette	2623	2413	FTI	1880	PTI	353	39
	Piedmont	1412	1235	DSR	474	FTI	435	173
	Richmond / Newport News / Norfolk	915	441	DCS	324	DSR	257	81
	Silver Star	1449	943	FTI	424	PTI	389	28
	Wolverine	3805	3021	FTI	2629	PTI	417	39
UP	California Zephyr	658	744	FTI	225	PTI	160	1381
	Capitol Corridor	563	567	PTI	265	DCS	104	171
	Cascades	1303	1270	FTI	508	PTI	335	125
	Coast Starlight	1225	1254	PTI	454	FTI	327	1162
	Lincoln Service	1073	1036	FTI	409	PTI	382	231
	Missouri	714	756	FTI	431	PTI	121	271
	Pacific Surfliner	1799	1366	PTI	906	DCS	254	174
	San Joaquins	1167	1188	PTI	521	DCS	260	88
	Sunset Ltd	1774	1732	FTI	1133	DSR	236	1784
	Texas Eagle	1856	1831	FTI	962	DSR	283	1073

Delay Minutes per 10K Train Miles by Host for November 2018

Host	Service	Total Host Responsible Delays		Largest Two Delay Categories - Current Month				Route Miles
		Current Month	Most Recent 12 Months	#1	#2	#3	#4	
Target		900	900					
Amtrak	Adirondack	541	551	RTE	163	DCS	155	100
	Blue Water	442	814	PTI	227	DCS	79	99
	Ethan Allen Express	633	690	PTI	267	RTE	124	100
	Maple Leaf	914	479	PTI	499	DCS	246	109
	New York - Albany	432	387	PTI	153	DCS	93	81
	New York - Niagara Falls	444	498	PTI	177	DCS	103	109
	Wolverine	543	1094	PTI	362	DCS	74	99
BBrRR	Cardinal	1268	1240	FTI	640	PTI	463	132
Fla DOT	Silver Meteor	1789	1278	DSR	1159	CTI	357	68
	Silver Star	1761	1386	DSR	1090	CTI	495	68
FR	Auto Train	2389	2900	CTI	1311	DCS	833	16
	Silver Meteor	1965	1985	CTI	654	DCS	654	61
	Silver Star	832	1443	DSR	301	DCS	255	61
MADOT	Vermonteer	2156	2320	DSR	1843	PTI	240	50
MBTA	Downeaster	960	1287	CTI	475	DCS	136	38
Metra	Empire Builder	1355	1520	CTI	1071	FTI	98	29
	Hiawatha	1419	1371	CTI	841	DSR	227	29
MIDOT	Blue Water	356	512	PTI	265	RTE	53	22
	Wolverine	447	560	PTI	303	DCS	88	134
MNRR	Acela Express	2112	1957	DSR	1028	CTI	734	56
	Adirondack	1643	1408	CTI	722	DSR	335	64
	All Other Northeast Regional	2340	2086	DSR	1209	CTI	952	56
	Ethan Allen Express	1952	1523	CTI	845	DMW	570	64
	Lake Shore Ltd	1769	1461	CTI	981	DSR	345	64
	Lynchburg	2884	2705	DSR	1740	CTI	380	56
	Maple Leaf	1484	1344	CTI	638	DSR	406	64
	New York - Albany	1575	1407	CTI	838	DSR	321	64
	New York - Niagara Falls	2155	1792	CTI	921	DSR	532	64
	Richmond / Newport News / Norfolk	2555	2458	DSR	1139	CTI	1036	56
Vermonteer	2548	2718	CTI	1170	DSR	1074	56	
NECR	Vermonteer	1267	1360	DSR	1111	DCS	66	238
NMDOT	Southwest Chief	2005	1829	CTI	883	DSR	426	80
PanAm	Downeaster	867	1144	PTI	404	DCS	240	77
SCRRA	Coast Starlight	2161	2347	PTI	828	CTI	747	48
	Pacific Surfliner	1101	1002	PTI	424	CTI	393	95
SDNRR	Pacific Surfliner	1826	1548	CTI	751	PTI	634	60
TRE	Texas Eagle	3131	2371	CTI	2123	DCS	344	33
VTR	Ethan Allen Express	156	136	DCS	99	FTI	50	24

The numbers included in this document are preliminary and are for informational purposes only.

Excludes hosts with fewer than 15 route miles.

Delays on the Amtrak-owned portion of the Northeast Corridor are shown in a separate report, with tighter delay standards.

Northeast Regional: Lynchburg includes all trains between Lynchburg and points on the NEC; Richmond / Newport News / Norfolk includes all trains between these locations and points on the NEC.

Delay Minutes per 10K Train Miles by Service for November 2018

Service	Host	Total Host Responsible Delays		Largest Two Delay Categories - Current Month				Route Miles	
		Current Month	Most Recent 12 Months	#1		#2			
Target		900	900						
Acela Express									
Acela Express	MNRR	2112	1957	DSR	1028	CTI	734	56	
All Other NEC Corridor Routes									
Northeast Regional	Richmond / Newport News / Norfolk	CSX	1374	1785	FTI	291	PTI	270	189
		NS	915	441	DCS	324	DSR	257	81
		MNRR	2555	2458	DSR	1139	CTI	1036	56
	Lynchburg	NS	966	726	FTI	538	PTI	129	216
		MNRR	2884	2705	DSR	1740	CTI	380	56
	All Other Northeast Regional	MNRR	2340	2086	DSR	1209	CTI	952	56
Non-NEC Corridor Routes									
Capitol Corridor		UP	563	567	PTI	265	DCS	104	171
Carolinian		CSX	1590	1727	FTI	480	PTI	434	295
		NS	1610	1004	DSR	600	PTI	368	202
Cascades		BNSF	1465	1368	DSR	437	FTI	433	343
		UP	1303	1270	FTI	508	PTI	335	125
Downeaster		MBTA	960	1287	CTI	475	DCS	136	38
		PanAm	867	1144	PTI	404	DCS	240	77
Empire	Adirondack	CN	3452	3273	DSR	1367	RTE	1071	49
		CP	930	779	PTI	464	DCS	192	178
		Amtrak	541	551	RTE	163	DCS	155	100
		MNRR	1643	1408	CTI	722	DSR	335	64
	Ethan Allen Express	CP	921	746	DMW	349	PTI	217	60
		Amtrak	633	690	PTI	267	RTE	124	100
		MNRR	1952	1523	CTI	845	DMW	570	64
		VTR	156	136	DCS	99	FTI	50	24
	Maple Leaf	CSX	1140	1440	FTI	446	RTE	320	298
		Amtrak	914	479	PTI	499	DCS	246	109
		MNRR	1484	1344	CTI	638	DSR	406	64
	New York - Albany	Amtrak	432	387	PTI	153	DCS	93	81
		MNRR	1575	1407	CTI	838	DSR	321	64
	New York - Niagara Falls	CSX	951	1186	FTI	439	RTE	223	296
		Amtrak	444	498	PTI	177	DCS	103	109
		MNRR	2155	1792	CTI	921	DSR	532	64
Heartland Flyer		BNSF	2273	2094	DSR	1196	FTI	829	236
Hiawatha		CP	342	267	FTI	89	DCS	65	53
		Metra	1419	1371	CTI	841	DSR	227	29
Hoosier		CSX	1210	989	FTI	615	DSR	269	175
Illinois	Carl Sandburg / Illinois Zephyr	BNSF	926	613	FTI	415	DCS	214	257
	Illini / Saluki	CN	1540	1836	DCS	765	FTI	404	304
	Lincoln Service	CN	1927	1672	FTI	1414	DCS	241	35
		UP	1073	1036	FTI	409	PTI	382	231
Michigan	Blue Water	CN	690	871	FTI	493	DCS	85	159
		NS	4259	3111	FTI	2883	DCS	587	39
		Amtrak	442	814	PTI	227	DCS	79	99
		MIDOT	356	512	PTI	265	RTE	53	22
	Pere Marquette	CSX	618	472	FTI	379	DCS	148	135
		NS	2623	2413	FTI	1880	PTI	353	39
	Wolverine	CN	2001	1799	DSR	727	DCS	573	27
		NS	3805	3021	FTI	2629	PTI	417	39
		Amtrak	543	1094	PTI	362	DCS	74	99
		MIDOT	447	560	PTI	303	DCS	88	134
Missouri		UP	714	756	FTI	431	PTI	121	271
Pacific Surfliner		BNSF	1911	1223	DCS	521	DSR	450	22
		UP	1799	1366	PTI	906	DCS	254	174
		SCRRA	1101	1002	PTI	424	CTI	393	95
		SDNRR	1826	1548	CTI	751	PTI	634	60
Pennsylvanian		NS	1545	1358	FTI	1032	DCS	218	249
Piedmont		NS	1412	1235	DSR	474	FTI	435	173
San Joaquins		BNSF	1005	1016	PTI	422	FTI	321	284
		UP	1167	1188	PTI	521	DCS	260	88
Vermont		MADOT	2156	2320	DSR	1843	PTI	240	50
		MNRR	2548	2718	CTI	1170	DSR	1074	56
		NECR	1267	1360	DSR	1111	DCS	66	238

Delay Minutes per 10K Train Miles by Service for November 2018

Service	Host	Total Host Responsible Delays		Largest Two Delay Categories - Current Month				Route Miles
		Current Month	Most Recent 12 Months	#1		#2		
Target		900	900					
Long-Distance Routes								
Auto Train	CSX	1102	1292	FTI	509	PTI	298	898
	FR	2389	2900	CTI	1311	DCS	833	16
California Zephyr	BNSF	1397	1123	DSR	542	FTI	481	1027
	UP	658	744	FTI	225	PTI	160	1381
Capitol Ltd	CSX	1139	1222	DCS	321	FTI	307	307
	NS	3677	2596	FTI	2884	RTE	292	481
Cardinal	CSX	1137	1078	FTI	473	DCS	296	703
	NS	2533	1445	FTI	797	DMW	516	79
	BBrRR	1268	1240	FTI	640	PTI	463	132
City Of New Orleans	CN	1014	1320	FTI	497	RTE	169	930
Coast Starlight	BNSF	697	773	DSR	183	PTI	174	186
	UP	1225	1254	PTI	454	FTI	327	1162
	SCRRA	2161	2347	PTI	828	CTI	747	48
Crescent	NS	1886	1972	FTI	1056	DCS	309	1141
Empire Builder	BNSF	725	1036	FTI	399	DSR	183	2147
	CP	466	680	FTI	267	DSR	97	384
	Metra	1355	1520	CTI	1071	FTI	98	29
Lake Shore Ltd	CSX	1091	1094	FTI	593	RTE	201	741
	NS	3893	2944	FTI	2555	PTI	802	339
	MNRR	1769	1461	CTI	981	DSR	345	64
Palmetto	CSX	925	1133	FTI	360	PTI	252	659
Silver Meteor	CSX	589	911	FTI	237	PTI	138	1152
	Fla DOT	1789	1278	DSR	1159	CTI	357	68
	FR	1965	1985	CTI	654	DCS	654	61
Silver Star	CSX	1003	1193	FTI	308	PTI	255	1209
	NS	1449	943	FTI	424	PTI	389	28
	Fla DOT	1761	1386	DSR	1090	CTI	495	68
	FR	832	1443	DSR	301	DCS	255	61
Southwest Chief	BNSF	873	709	FTI	315	DSR	187	2206
	NMDOT	2005	1829	CTI	883	DSR	426	80
Sunset Ltd	BNSF	3062	1528	FTI	1221	DSR	1065	190
	UP	1774	1732	FTI	1133	DSR	236	1784
Texas Eagle	BNSF	2241	1783	DSR	1037	FTI	893	116
	CN	2481	2640	FTI	1446	DCS	455	35
	UP	1856	1831	FTI	962	DSR	283	1073
	TRE	3131	2371	CTI	2123	DCS	344	33

The numbers included in this document are preliminary and are for informational purposes only.
 Excludes hosts with fewer than 15 route miles.
 Delays on the Amtrak-owned portion of the Northeast Corridor are shown in a separate report, with tighter delay standards.
 Northeast Regional: Lynchburg includes all trains between Lynchburg and points on the NEC; Richmond / Newport News / Norfolk includes all trains between these locations and points on the NEC.

All Stations and Customer OTP for November 2018

Service	All Stations OTP		Customer OTP		Avg Mins Late per Late Rider**	
	Current Month	Most Recent 12 Months	Current Month	Most Recent 12 Months	Current Month	Most Recent 12 Months
Amtrak System	68.4%	72.3%	67.1%	72.4%	56	59
NEC Corridor Routes	79.9%	82.1%	75.5%	81.2%	39	39
Target*	80.0%	80.0%				
Acela Express*	79.3%	77.8%	75.1%	79.8%	32	29
Keystone	85.3%	90.8%	82.4%	89.6%	42	36
Northeast Regional	78.1%	80.2%	73.9%	79.6%	41	43
All Other Northeast Regional	83.2%	85.6%	80.9%	85.2%	41	41
Lynchburg	67.0%	74.9%	59.4%	71.5%	47	44
Richmond / Newport News / Norfolk	70.6%	73.9%	63.8%	71.1%	41	45
Springfield Shuttles	82.2%	77.8%	79.4%	83.6%	33	34
Non-NEC Corridor Routes	71.0%	76.9%	65.9%	72.5%	46	44
Target	80.0%	80.0%				
Capitol Corridor	84.7%	89.7%	82.5%	88.4%	29	33
Carolinian	45.0%	52.6%	42.8%	50.6%	60	63
Cascades	60.3%	63.8%	54.5%	56.2%	42	41
Downeaster	85.6%	81.1%	82.2%	75.0%	28	35
Empire	73.2%	76.4%	70.9%	73.2%	43	43
Adirondack	59.5%	68.9%	58.0%	65.3%	56	50
Ethan Allen Express	82.7%	86.1%	74.2%	77.4%	32	33
Maple Leaf	61.1%	61.9%	55.4%	59.8%	48	51
New York - Albany	86.9%	88.9%	81.2%	84.3%	45	37
New York - Niagara Falls	67.0%	69.6%	61.0%	59.6%	37	43
Heartland Flyer	50.7%	59.9%	31.9%	41.7%	41	46
Hiawatha	94.3%	96.4%	93.7%	95.3%	46	39
Hoosier	73.0%	78.9%	72.5%	77.4%	47	59
Illinois	65.8%	67.8%	59.7%	63.2%	51	47
Carl Sandburg / Illinois Zephyr	78.0%	87.8%	71.8%	84.2%	75	49
Illini / Saluki	39.5%	35.7%	30.7%	23.2%	45	49
Lincoln Service	73.6%	75.3%	68.3%	73.2%	50	45
Michigan	62.3%	65.4%	51.8%	52.4%	48	44
Blue Water	66.5%	74.1%	55.7%	57.7%	51	45
Pere Marquette	84.2%	83.8%	81.2%	75.3%	50	42
Wolverine	58.4%	60.7%	44.9%	46.0%	47	44
Missouri	84.1%	82.8%	82.8%	79.6%	47	44
Pacific Surfliner	65.3%	79.0%	59.3%	74.2%	50	46
Pennsylvanian	62.7%	71.3%	60.0%	69.7%	52	46
Piedmont	57.6%	74.7%	47.8%	65.3%	39	41
San Joaquins	63.9%	74.7%	51.8%	68.3%	40	40
Vermont	73.8%	64.0%	76.6%	67.8%	59	50
Long-Distance Routes	41.2%	43.5%	40.5%	42.6%	100	102
Target	80.0%	80.0%				
Auto Train	85.8%	71.8%	73.4%	60.5%	66	118
California Zephyr	37.5%	47.1%	35.1%	43.6%	98	109
Capitol Ltd	32.8%	37.0%	20.2%	24.7%	131	106
Cardinal	46.5%	52.8%	43.1%	53.5%	60	88
City Of New Orleans	66.6%	49.2%	81.3%	61.6%	60	71
Coast Starlight	48.4%	53.6%	48.9%	54.8%	81	86
Crescent	18.5%	30.7%	19.9%	25.6%	171	130
Empire Builder	61.0%	43.8%	60.1%	41.1%	69	131
Lake Shore Ltd	36.9%	40.5%	30.1%	30.5%	109	98
Palmetto	62.7%	58.6%	50.9%	56.7%	55	59
Silver Meteor	47.8%	47.0%	37.6%	40.9%	86	95
Silver Star	29.1%	37.6%	23.8%	30.6%	103	91
Southwest Chief	28.9%	43.4%	24.9%	39.3%	98	98
Sunset Ltd	21.3%	27.7%	32.0%	41.7%	142	131
Texas Eagle	30.6%	37.4%	25.5%	36.0%	107	110

The numbers included in this document are preliminary and are for informational purposes only.

Northeast Regional: Lynchburg includes all trains between Lynchburg and points on the NEC; Richmond/Newport News/Norfolk includes all trains between these locations and points on the NEC.

* Acela Express on time performance target is 90.0%

** Excludes on time Customers

Host Railroad Responsible Delays

Code	Code Description	Explanation
CTI	Commuter Train Interference	Delays for meeting or following commuter trains
DCS	Signal Delays	Signal failure or All Other signal delays, wayside defect-detector false-alarms, defective road crossing protection, efficiency tests, drawbridge stuck open
DMW	Maintenance of Way	Maintenance of Way delays including holds for track repairs or MW foreman to clear
DSR	Slow Order Delays	Temporary slow orders, except heat or cold orders
DTR	Detour	Delays from detours
FTI	Freight Train Interference	Delays from freight trains
PTI	Passenger Train Interference	Delays for meeting or following All Other passenger trains
RTE	Routing	Routing-dispatching delays including diversions, late track bulletins, etc.

Amtrak Responsible Delays

Code	Code Description	Explanation
ADA	Passenger Related	All delays related to disabled passengers, wheel chair lifts, guide dogs, etc.
CAR	Car Failure	Mechanical failure on all types of cars
CCR	Cab Car Failure	Mechanical failure on Cab Cars
CON	Hold for Connection	Holding for connections from All Other trains or buses.
ENG	Locomotive Failure	Mechanical failure on engines.
HLD	Passenger Related	All delays related to passengers, checked-baggage, large groups, etc.
INJ	Injury Delay	Delay due to injured passengers or employees.
ITI	Initial Terminal Delay	Delay at initial terminal due to late arriving inbound trains causing late release of equipment.
OTH	Miscellaneous Delays	Lost-on-run, heavy trains, unable to make normal speed, etc.
SVS	Servicing	All switching and servicing delays
SYS	Crew & System	Delays related to crews including lateness, lone-engineer delays

Third-Party Delays

Code	Code Description	Explanation
CUI	Customs	U.S. and Canadian customs delays; Immigration-related delays
DBS	Debris	Debris strikes
MBO	Drawbridge Openings	Movable bridge openings for marine traffic where no bridge failure is involved
NOD	Unused Recovery Time	Wait for departure time
POL	Police-Related	Police/fire department holds on right-of-way or on-board trains
TRS	Trespassers	Trespasser incidents including road crossing accidents, trespasser / animal strikes, vehicle stuck on track ahead, bridge strikes
WTR	Weather-Related	All severe-weather delays, landslides or washouts, earthquake-related delays, heat or cold orders

*These delay codes are applicable to Off-NEC routes only.