



Host Railroad Report

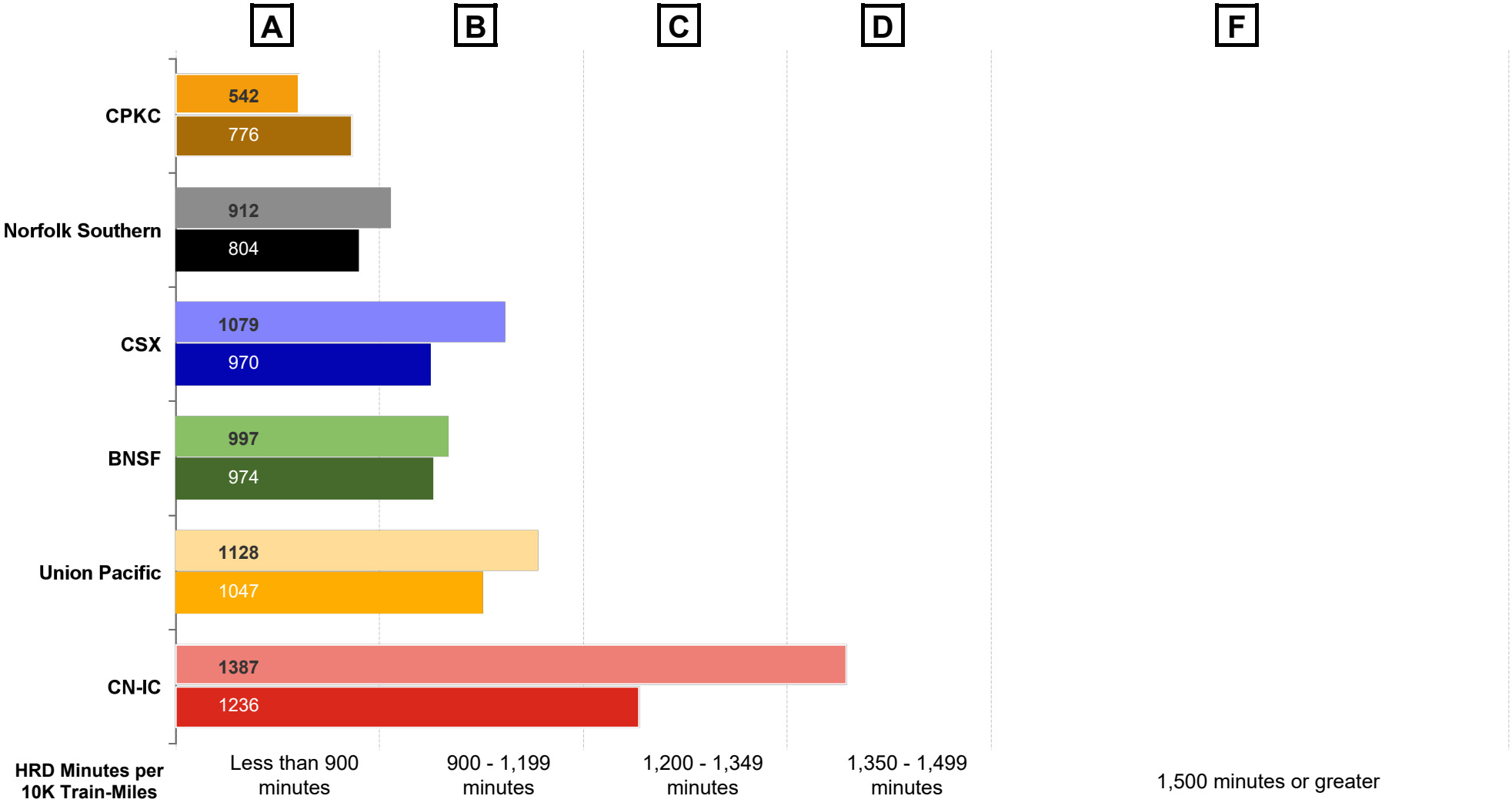
Amtrak Train Performance on Host Railroads

Data through March 2026

Host Railroad Report Card Update

Current Month and 1 Year Snapshot

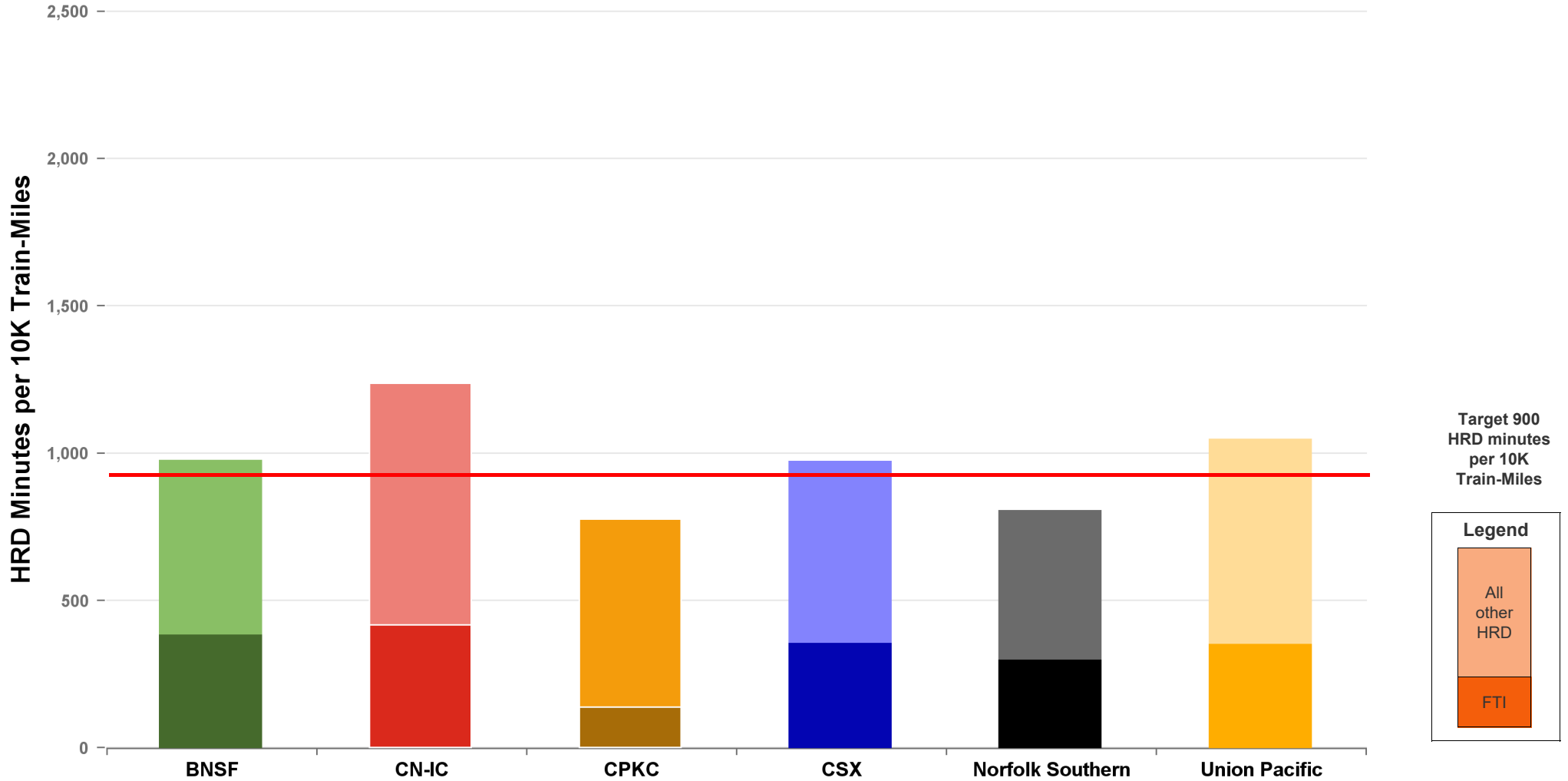
A monthly update of the Host Railroad Report Card, which grades the six major host railroads based on host responsible delay (HRD) minutes per 10,000 train-miles for the current month (lighter shade) and the most recent 12 months.



Total Host-Responsible Delays

1 Year Snapshot

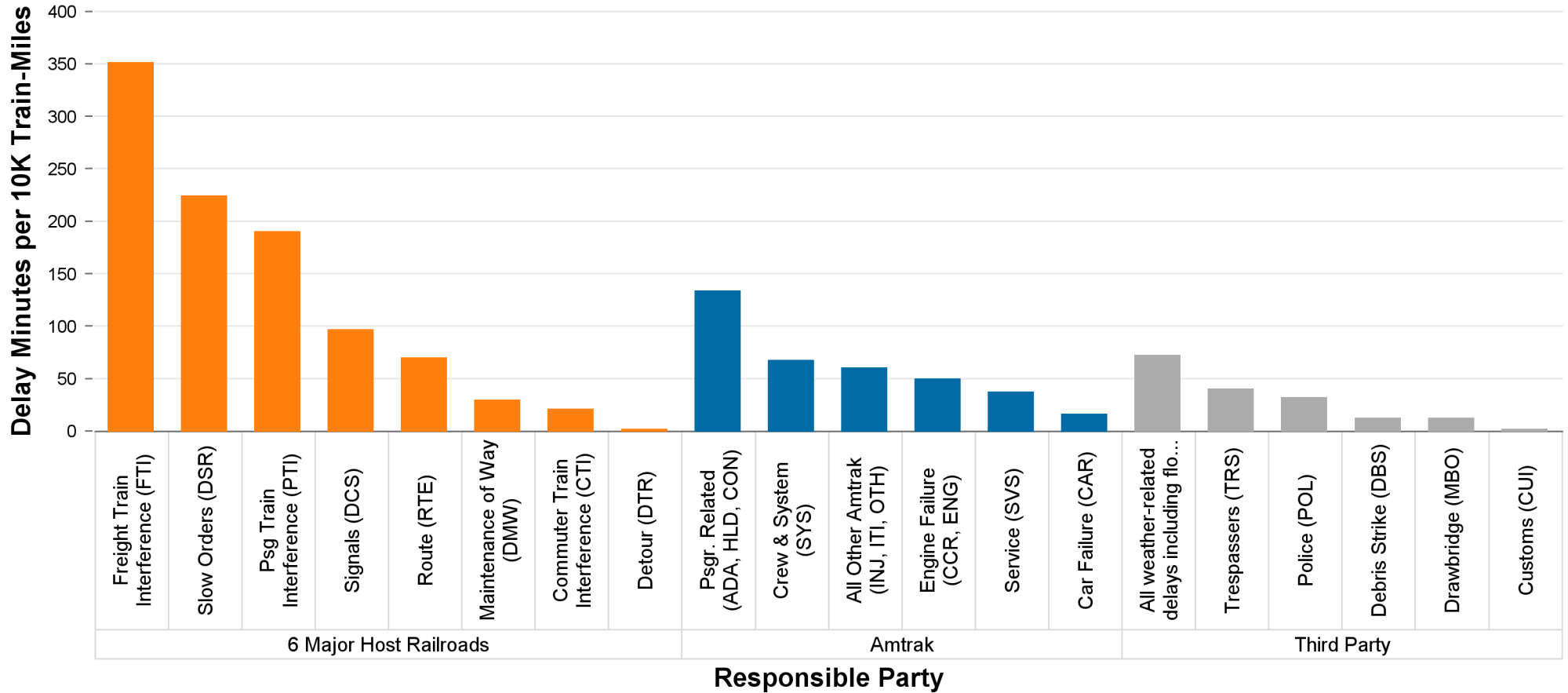
Total host-responsible delay (HRD) minutes per 10,000 train-miles incurred by Amtrak trains on the six major host railroads, with delays attributable to freight train interference (FTI) shaded.



Delays to Amtrak Trains by Responsible Party

1 Year Snapshot

Delay minutes per 10,000 train-miles on the six major host railroads categorized by delay type and responsible party.

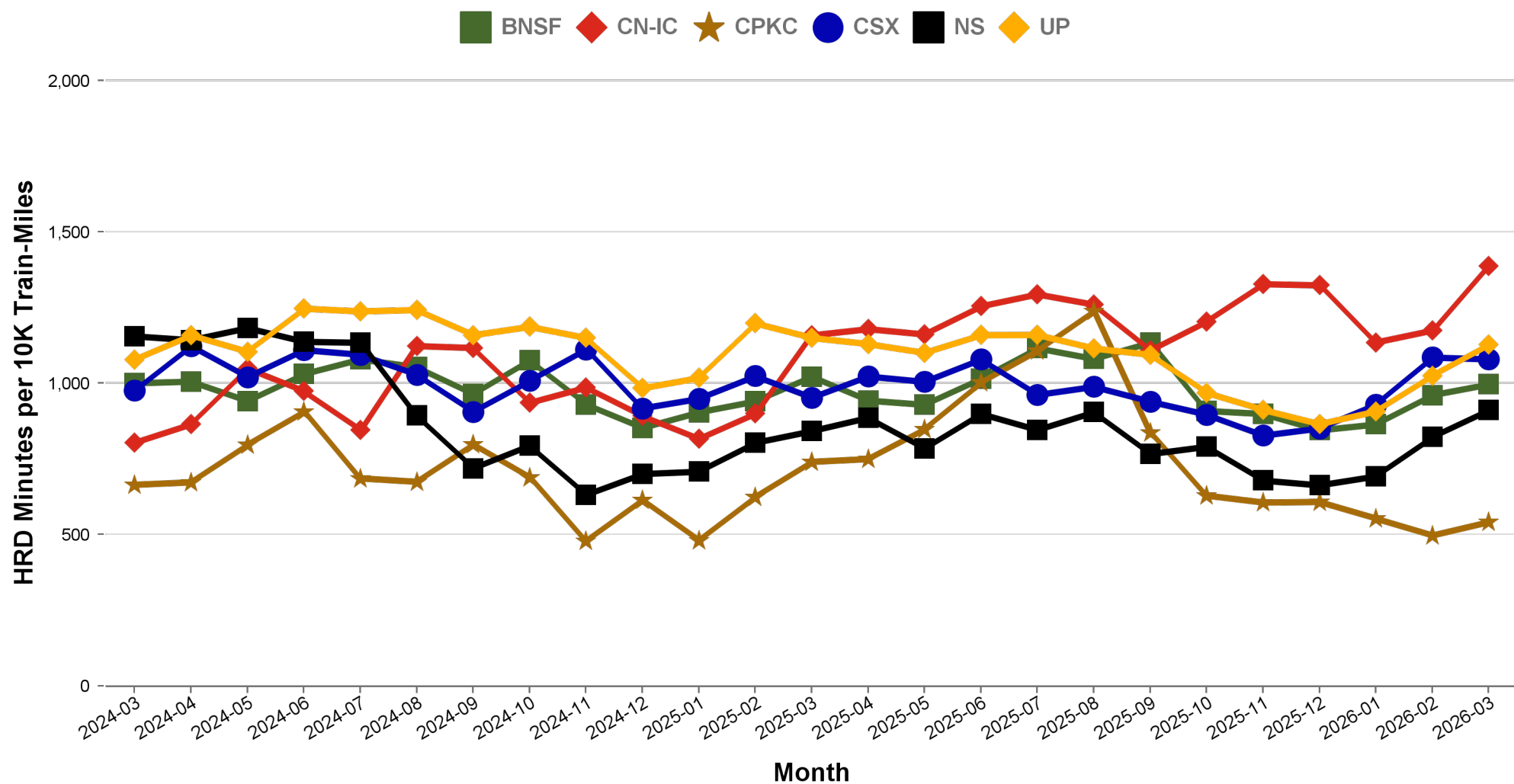


Responsible Party	6 Major Host Railroads	Amtrak	Third Party
Delay Minutes per 10K Train-Miles	979	361	169
Percentage of Total Delays	64.9%	23.9%	11.2%

Total Host-Responsible Delays

2 Year Snapshot

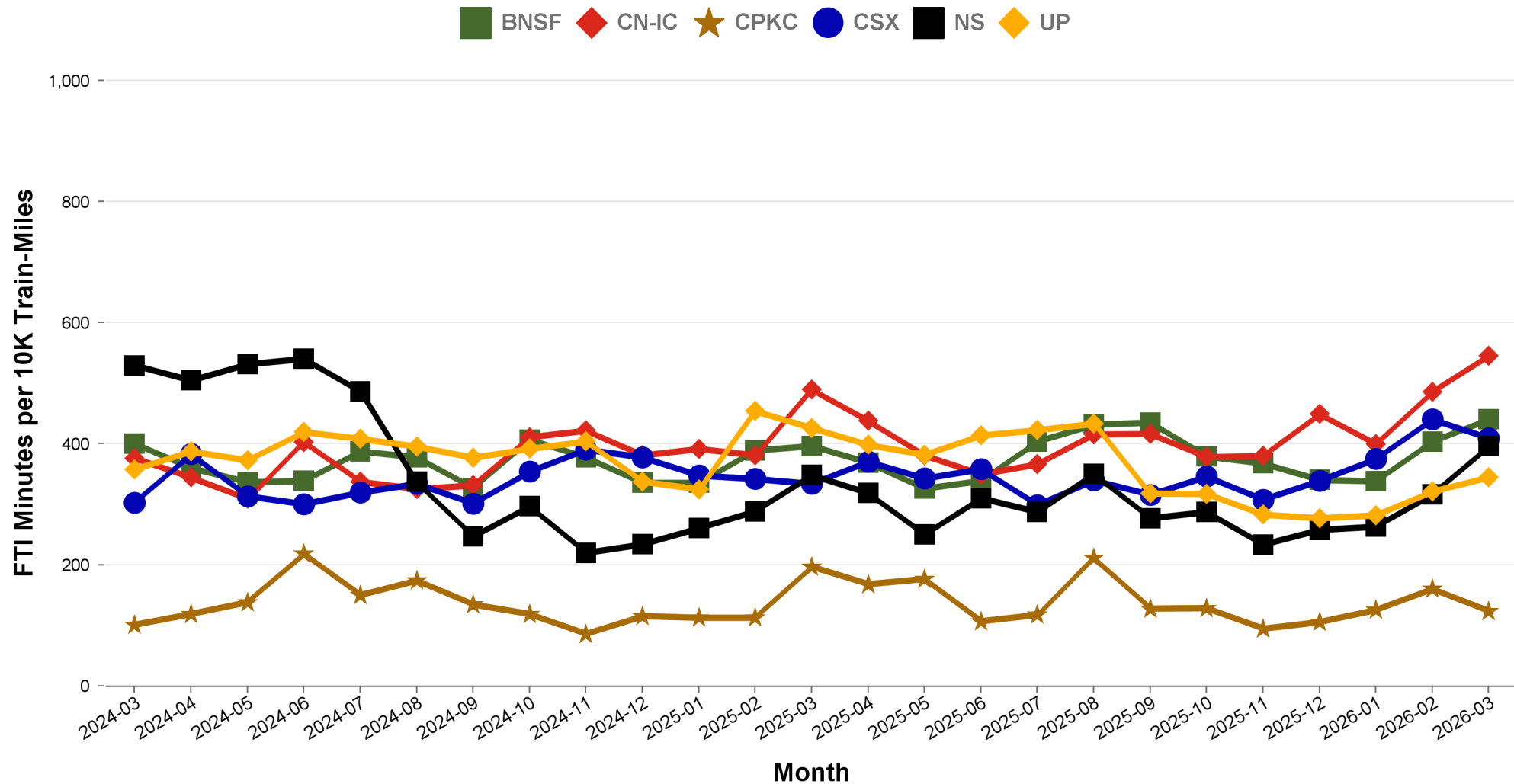
Total host-responsible delay (HRD) minutes per 10,000 train-miles incurred by Amtrak trains on each of the six major host railroads for the most recent two years.



Freight Train Interference Delays

2 Year Snapshot

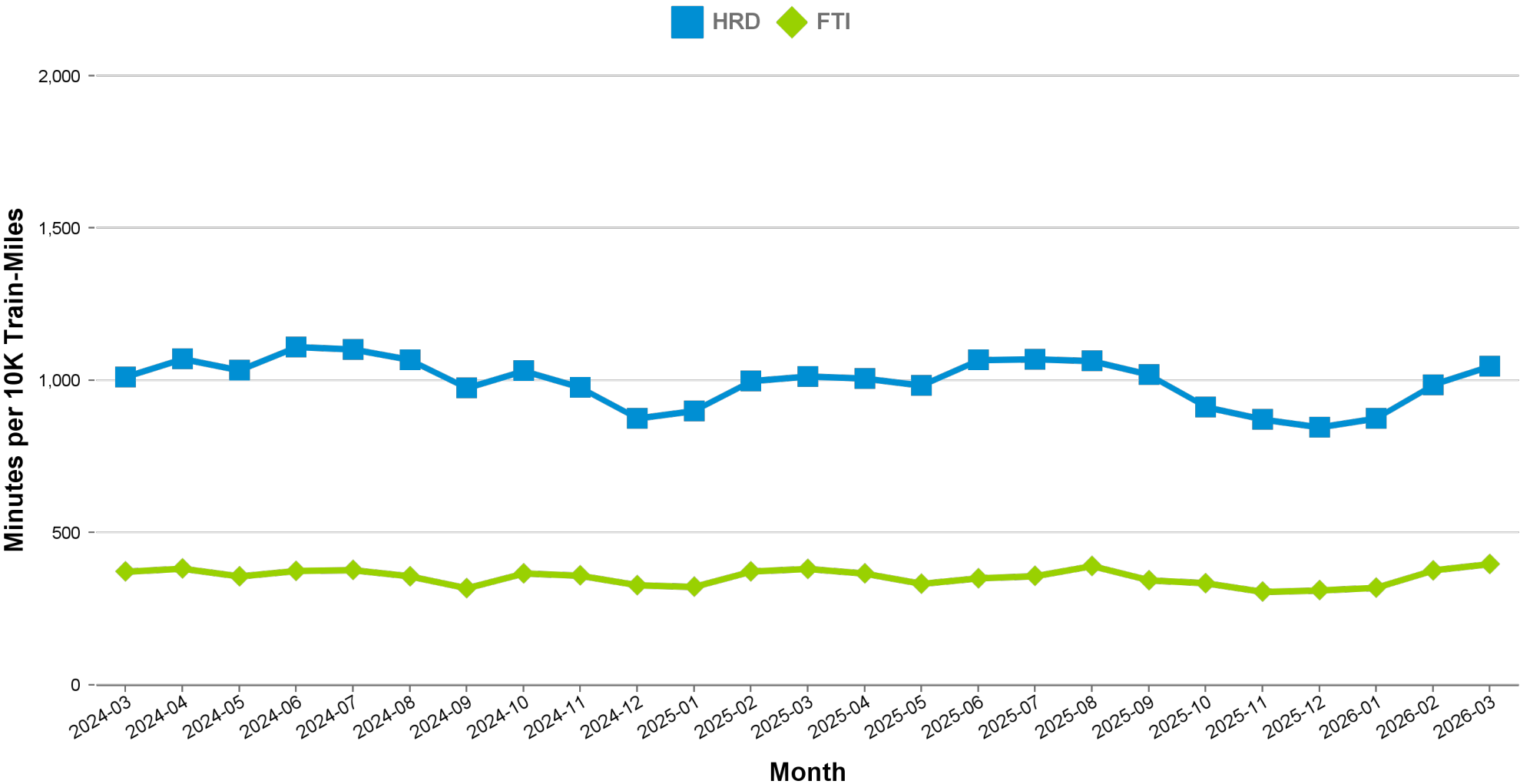
Total delay minutes per 10,000 train-miles attributable to freight train interference (FTI) incurred by Amtrak trains on each of the six major host railroads for the most recent two years.



Aggregated Host Railroad Performance Trend

2 Year Snapshot

Total host-responsible delay (HRD) and freight interference (FTI) minutes per 10,000 train-miles incurred by Amtrak trains, aggregated for the six major host railroads for the most recent two years.



Minutes of Delay per 10K Train Miles by Host for March 2026

Host	Service	Total Host Responsible Delays		Largest Two Delay Categories - Current Month				Route Miles
		Current Month	Most Recent 12 Months	#1		#2		
Target		900	900					
BNSF	California Zephyr	815	818	FTI	399	DSR	103	1027
	Carl Sandburg / Illinois Zephyr	719	785	FTI	367	CTI	122	257
	Cascades	1252	1022	DSR	428	FTI	276	317
	Coast Starlight	1334	1043	DSR	451	FTI	257	158
	Empire Builder	1079	792	FTI	803	DSR	141	2147
	Gold Runner	729	1176	PTI	353	FTI	198	284
	Heartland Flyer	1784	2123	DSR	1128	FTI	585	236
	Pacific Surfliner	1113	1157	DSR	319	FTI	292	22
	Southwest Chief	957	916	FTI	467	DSR	200	2206
	Sunset Ltd	1629	1156	DSR	1259	DCS	160	190
	Texas Eagle	1729	1607	DSR	890	FTI	633	116
CN-IC	Blue Water	1485	1000	DSR	795	FTI	631	159
	City Of New Orleans	1202	1160	FTI	461	DSR	384	930
	Illini / Saluki	1014	859	FTI	367	DSR	274	304
	Lincoln / Missouri	3154	2661	FTI	1831	DSR	961	35
	Lincoln Service	2498	2125	FTI	1437	DSR	564	35
	Texas Eagle	2652	2280	FTI	1594	DSR	654	35
	Wolverine	3397	3274	DSR	2301	FTI	576	27
CPKC	Adirondack	737	1104	PTI	449	FTI	85	178
	Borealis	597	888	FTI	185	PTI	162	376
	Empire Builder	559	848	FTI	188	PTI	156	384
	Ethan Allen Express	1634	1822	PTI	1316	DCS	120	60
	Hiawatha	141	177	DCS	69	FTI	24	53
CSX	Auto Train	1244	1136	FTI	463	DSR	389	898
	Cardinal	829	844	FTI	462	DSR	190	703
	Carolinian	1983	1578	PTI	581	DSR	494	295
	Downeaster	813	789	PTI	323	DSR	225	107
	Floridian	1120	978	FTI	312	DSR	262	1413
	Lake Shore Ltd	979	778	FTI	630	RTE	94	741
	Maple Leaf	636	801	FTI	372	DSR	73	298
	Mardi Gras Service	2573	2151	FTI	1508	PTI	527	137
	New York - Niagara Falls	636	700	FTI	434	RTE	74	296
	Palmetto	1095	964	FTI	418	PTI	279	659
	Pere Marquette	182	319	FTI	87	DSR	52	135
	Richmond / Newport News / Norfolk	1218	1150	FTI	302	CTI	209	189
	Silver Meteor	842	809	FTI	357	DSR	200	1152
NS	Blue Water	1838	1894	FTI	1281	PTI	270	39
	Cardinal	1063	1307	PTI	506	FTI	306	79
	Carolinian	565	623	PTI	344	FTI	89	202
	Crescent	1024	876	FTI	448	DSR	250	1141
	Floridian	1003	929	FTI	534	RTE	183	518
	Lake Shore Ltd	1062	956	FTI	692	RTE	159	339
	Pennsylvanian	770	648	DSR	311	FTI	213	249
	Pere Marquette	1192	1511	FTI	674	DCS	306	39
	Piedmont	617	625	PTI	266	FTI	158	173
	Richmond / Newport News / Norfolk	630	398	DCS	244	DSR	155	81
	Roanoke	746	526	PTI	360	FTI	207	216
	Wolverine	2019	1833	FTI	1359	PTI	309	39
UP	California Zephyr	842	924	FTI	310	DSR	280	1381
	Capitol Corridor	994	660	PTI	414	DSR	221	171
	Cascades	1465	1435	DSR	658	PTI	356	125
	Coast Starlight	1466	1296	DSR	553	DCS	304	1162
	Gold Runner	1239	1188	PTI	376	DSR	287	88
	Lincoln / Missouri	953	940	FTI	344	PTI	269	502
	Lincoln Service	931	951	PTI	330	FTI	327	231
	Missouri	667	931	FTI	354	PTI	136	271
	Pacific Surfliner	1280	1039	PTI	494	DSR	440	174
	Sunset Ltd	1348	1183	FTI	871	DSR	201	1784
	Texas Eagle	1306	1383	FTI	740	DSR	249	1073

Minutes of Delay per 10K Train Miles by Host for March 2026

Host	Service	Total Host Responsible Delays		Largest Two Delay Categories - Current Month				Route Miles
		Current Month	Most Recent 12 Months	#1		#2		
Target		900	900					
Amtrak	Adirondack	221	466	PTI	111	RTE	61	100
	Blue Water	283	292	PTI	158	DSR	34	99
	Ethan Allen Express	219	465	PTI	65	DCS	63	100
	Maple Leaf	231	633	RTE	74	SMW	52	109
	New York - Albany	253	436	PTI	75	DCS	55	81
	New York - Niagara Falls	368	445	PTI	163	DCS	81	109
	Wolverine	289	449	PTI	144	FTI	68	99
BBrRR	Cardinal	1262	1551	PTI	623	FTI	424	132
CN-Canada	Adirondack	3317	3236	DSR	934	RTE	814	49
Fla DOT	Floridian	1117	1083	CTI	609	RTE	180	70
	Silver Meteor	1011	1111	CTI	591	DSR	155	70
FR	Auto Train	3305	4035	CTI	2583	DSR	406	16
	Floridian	2147	2448	CTI	1126	DSR	416	61
	Silver Meteor	1887	2347	CTI	789	PTI	518	61
MADOT	Springfield Shuttles	260	299	FTI	157	DCS	80	36
	Vermonters	261	285	DCS	169	DSR	81	50
MBTA	Downeaster	925	821	DCS	564	PTI	109	38
Metra	Borealis	1077	1458	CTI	546	DCS	260	33
	Empire Builder	2239	2629	CTI	2045	DCS	116	29
	Hiawatha	1384	2083	CTI	934	DCS	174	29
MIDOT	Blue Water	273	290	DCS	212	PTI	61	22
	Wolverine	544	656	PTI	467	DCS	35	134
MNRR	Acela	2029	1558	DSR	1470	CTI	345	56
	Adirondack	724	1352	CTI	604	RTE	78	64
	Ethan Allen Express	957	1521	CTI	727	PTI	109	64
	Lake Shore Ltd	534	1088	CTI	392	RTE	76	64
	Maple Leaf	969	1011	CTI	808	RTE	127	64
	New York - Albany	580	970	CTI	420	RTE	70	64
	New York - Niagara Falls	587	1134	CTI	465	RTE	47	64
	Richmond / Newport News / Norfolk	1747	1550	DSR	1063	CTI	496	56
	Vermonters	2805	2331	DSR	1276	CTI	1210	56
NECR	Vermonters	466	705	DSR	413	DCS	46	192
NMDOT	Southwest Chief	2011	2116	CTI	1358	PTI	493	80
SCRRA	Coast Starlight	1598	1542	PTI	882	CTI	385	48
	Pacific Surfliner	1040	944	CTI	461	PTI	347	95
SDNRR	Pacific Surfliner	1155	1130	PTI	442	CTI	417	60
Sounder	Cascades	934	993	PTI	576	CTI	222	20
	Coast Starlight	2491	2553	PTI	1472	CTI	1000	20
TRE	Texas Eagle	625	1070	PTI	304	CTI	127	33
VTR	Ethan Allen Express	30	1023	RTE	23	DSR	7	91

The numbers included in this document are preliminary and are for informational purposes only.

Excludes hosts with fewer than 15 route miles.

Delays on the Amtrak-owned portion of the Northeast Corridor are shown in a separate report, with tighter delay standards.

Northeast Regional: Roanoke includes all trains between Roanoke and points on the NEC; Richmond / Newport News / Norfolk includes all trains between these locations and points on the NEC.

Minutes of Delay per 10K Train Miles by Service for March 2026

Service		Host	Total Host Responsible Delays		Largest Two Delay Categories - Current Month				Route Miles
			Current	Most	#1	#2			
Target			900	900					
Acela									
Acela		MNRR	2029	1558	DSR	1470	CTI	345	56
All Other NEC Corridor Routes									
Northeast Regional	Richmond / Newport News / Norfolk	CSX	1218	1150	FTI	302	CTI	209	189
		NS	630	398	DCS	244	DSR	155	81
		MNRR	1747	1550	DSR	1063	CTI	496	56
		NS	746	526	PTI	360	FTI	207	216
	Roanoke Springfield Shuttles	MADOT	260	299	FTI	157	DCS	80	36

Minutes of Delay per 10K Train Miles by Service for March 2026

Service	Host	Total Host Responsible Delays		Largest Two Delay Categories - Current Month				Route Miles	
		Current	Most	#1	#2				
Target		900	900						
Non-NEC Corridor Routes									
Borealis	CPKC	597	888	FTI	185	PTI	162	376	
	Metra	1077	1458	CTI	546	DCS	260	33	
Capitol Corridor	UP	994	660	PTI	414	DSR	221	171	
Carolinian	CSX	1983	1578	PTI	581	DSR	494	295	
	NS	565	623	PTI	344	FTI	89	202	
Cascades	BNSF	1252	1022	DSR	428	FTI	276	317	
	UP	1465	1435	DSR	658	PTI	356	125	
	Sounder	934	993	PTI	576	CTI	222	20	
Downeaster	CSX	813	789	PTI	323	DSR	225	107	
	MBTA	925	821	DCS	564	PTI	109	38	
Empire	Adirondack	CPKC	737	1104	PTI	449	FTI	85	178
		Amtrak	221	466	PTI	111	RTE	61	100
		CN-Canada	3317	3236	DSR	934	RTE	814	49
		MNRR	724	1352	CTI	604	RTE	78	64
	Ethan Allen Express	CPKC	1634	1822	PTI	1316	DCS	120	60
		Amtrak	219	465	PTI	65	DCS	63	100
		MNRR	957	1521	CTI	727	PTI	109	64
		VTR	30	1023	RTE	23	DSR	7	91
	Maple Leaf	CSX	636	801	FTI	372	DSR	73	298
		Amtrak	231	633	RTE	74	SMW	52	109
		MNRR	969	1011	CTI	808	RTE	127	64
	New York - Albany	Amtrak	253	436	PTI	75	DCS	55	81
		MNRR	580	970	CTI	420	RTE	70	64
	New York - Niagara Falls	CSX	636	700	FTI	434	RTE	74	296
		Amtrak	368	445	PTI	163	DCS	81	109
		MNRR	587	1134	CTI	465	RTE	47	64
Gold Runner	BNSF	729	1176	PTI	353	FTI	198	284	
	UP	1239	1188	PTI	376	DSR	287	88	
Heartland Flyer	BNSF	1784	2123	DSR	1128	FTI	585	236	
Hiawatha	CPKC	141	177	DCS	69	FTI	24	53	
	Metra	1384	2083	CTI	934	DCS	174	29	
Illinois	Carl Sandburg / Illinois Zephyr	BNSF	719	785	FTI	367	CTI	122	257
	Illini / Saluki	CN-IC	1014	859	FTI	367	DSR	274	304
	Lincoln Service	CN-IC	2498	2125	FTI	1437	DSR	564	35
		UP	931	951	PTI	330	FTI	327	231
Lincoln / Missouri	CN-IC	3154	2661	FTI	1831	DSR	961	35	
	UP	953	940	FTI	344	PTI	269	502	
Mardi Gras Service	CSX	2573	2151	FTI	1508	PTI	527	137	
Michigan	Blue Water	CN-IC	1485	1000	DSR	795	FTI	631	159
		NS	1838	1894	FTI	1281	PTI	270	39
		Amtrak	283	292	PTI	158	DSR	34	99
		MIDOT	273	290	DCS	212	PTI	61	22
	Pere Marquette	CSX	182	319	FTI	87	DSR	52	135
		NS	1192	1511	FTI	674	DCS	306	39
	Wolverine	CN-IC	3397	3274	DSR	2301	FTI	576	27
		NS	2019	1833	FTI	1359	PTI	309	39
		Amtrak	289	449	PTI	144	FTI	68	99
		MIDOT	544	656	PTI	467	DCS	35	134
Missouri	UP	667	931	FTI	354	PTI	136	271	
Pacific Surfliner	BNSF	1113	1157	DSR	319	FTI	292	22	
	UP	1280	1039	PTI	494	DSR	440	174	
	SCRRA	1040	944	CTI	461	PTI	347	95	
	SDNRR	1155	1130	PTI	442	CTI	417	60	
Pennsylvanian	NS	770	648	DSR	311	FTI	213	249	
Piedmont	NS	617	625	PTI	266	FTI	158	173	
Vermont	MADOT	261	285	DCS	169	DSR	81	50	
	MNRR	2805	2331	DSR	1276	CTI	1210	56	
	NECR	466	705	DSR	413	DCS	46	192	

Minutes of Delay per 10K Train Miles by Service for March 2026

Service	Host	Total Host Responsible Delays		Largest Two Delay Categories - Current Month				Route Miles
		Current	Most	#1	#2			
Target		900	900					
Long-Distance Routes								
Auto Train	CSX	1244	1136	FTI	463	DSR	389	898
	FR	3305	4035	CTI	2583	DSR	406	16
California Zephyr	BNSF	815	818	FTI	399	DSR	103	1027
	UP	842	924	FTI	310	DSR	280	1381
Cardinal	CSX	829	844	FTI	462	DSR	190	703
	NS	1063	1307	PTI	506	FTI	306	79
	BBrRR	1262	1551	PTI	623	FTI	424	132
City Of New Orleans	CN-IC	1202	1160	FTI	461	DSR	384	930
Coast Starlight	BNSF	1334	1043	DSR	451	FTI	257	158
	UP	1466	1296	DSR	553	DCS	304	1162
	SCRRA	1598	1542	PTI	882	CTI	385	48
	Sounder	2491	2553	PTI	1472	CTI	1000	20
Crescent	NS	1024	876	FTI	448	DSR	250	1141
Empire Builder	BNSF	1079	792	FTI	803	DSR	141	2147
	CPKC	559	848	FTI	188	PTI	156	384
	Metra	2239	2629	CTI	2045	DCS	116	29
Floridian	CSX	1120	978	FTI	312	DSR	262	1413
	NS	1003	929	FTI	534	RTE	183	518
	Fla DOT	1117	1083	CTI	609	RTE	180	70
	FR	2147	2448	CTI	1126	DSR	416	61
Lake Shore Ltd	CSX	979	778	FTI	630	RTE	94	741
	NS	1062	956	FTI	692	RTE	159	339
	MNRR	534	1088	CTI	392	RTE	76	64
Palmetto	CSX	1095	964	FTI	418	PTI	279	659
Silver Meteor	CSX	842	809	FTI	357	DSR	200	1152
	Fla DOT	1011	1111	CTI	591	DSR	155	70
	FR	1887	2347	CTI	789	PTI	518	61
Southwest Chief	BNSF	957	916	FTI	467	DSR	200	2206
	NMDOT	2011	2116	CTI	1358	PTI	493	80
Sunset Ltd	BNSF	1629	1156	DSR	1259	DCS	160	190
	UP	1348	1183	FTI	871	DSR	201	1784
Texas Eagle	BNSF	1729	1607	DSR	890	FTI	633	116
	CN-IC	2652	2280	FTI	1594	DSR	654	35
	UP	1306	1383	FTI	740	DSR	249	1073
	TRE	625	1070	PTI	304	CTI	127	33

The numbers included in this document are preliminary and are for informational purposes only.
 Excludes hosts with fewer than 15 route miles.
 Delays on the Amtrak-owned portion of the Northeast Corridor are shown in a separate report, with tighter delay standards.
 Northeast Regional: Roanoke includes all trains between Roanoke and points on the NEC; Richmond / Newport News / Norfolk includes all trains between these locations and points on the NEC.



Service	All-Stations OTP		Customer OTP		Avg Mins Late per Late Rider**	
	Current Month	Most Recent 12 Months	Current Month	Most Recent 12 Months	Current Month	Most Recent 12 Months
Amtrak System	77.8%	75.4%	77.5%	75.2%	51	55
NEC Corridor Routes	83.6%	80.9%	79.8%	78.6%	38	44
Minimum Standard			80.0%	80.0%		
Acela*	81.2%	79.1%	75.0%	77.7%	36	44
Keystone	90.3%	91.0%	88.5%	89.4%	41	35
Northeast Regional	81.8%	77.8%	79.2%	76.4%	38	45
On Spine Northeast Regional	82.5%	79.8%	80.7%	78.8%	39	45
Richmond / Newport News / Norfolk	79.3%	74.4%	76.8%	71.5%	37	44
Roanoke	79.9%	80.0%	76.3%	77.7%	34	49
Springfield Shuttles	86.9%	78.2%	86.8%	85.1%	33	38
Non-NEC Corridor Routes	82.5%	80.1%	80.4%	76.7%	45	45
Minimum Standard			80.0%	80.0%		
Borealis	86.5%	72.7%	81.3%	63.8%	52	47
Capitol Corridor	86.9%	90.2%	82.4%	88.3%	29	35
Carolinian	68.3%	66.9%	65.7%	65.6%	39	50
Cascades	74.5%	77.3%	74.4%	73.1%	41	41
Downeaster	96.1%	85.7%	93.0%	83.3%	27	34
Empire	86.7%	75.8%	87.2%	74.6%	39	44
Adirondack	79.4%	67.9%	79.4%	56.3%	50	47
Berkshire Flyer	-	51.9%	-	49.9%	-	65
Ethan Allen Express	87.0%	69.1%	88.8%	63.4%	81	42
Maple Leaf	76.6%	61.1%	79.2%	58.0%	44	54
New York - Albany	93.3%	84.8%	90.8%	82.4%	31	39
New York - Niagara Falls	86.8%	80.5%	85.0%	78.1%	31	44
Gold Runner	78.5%	68.2%	75.3%	62.3%	48	47
Heartland Flyer	66.8%	60.7%	59.4%	48.1%	31	48
Hiawatha	92.8%	89.9%	88.9%	86.6%	43	37
Illinois	80.2%	76.4%	76.0%	73.7%	48	44
Carl Sandburg / Illinois Zephyr	82.7%	78.2%	77.4%	77.0%	54	41
Illini / Saluki	81.5%	80.6%	79.1%	77.9%	44	43
Lincoln Service	77.3%	71.8%	73.3%	69.4%	48	44
Lincoln / Missouri	49.1%	52.7%	42.5%	48.0%	56	52
Mardi Gras Service	89.0%	91.6%	77.4%	85.7%	52	45
Michigan	76.9%	70.8%	73.1%	69.1%	66	52
Blue Water	72.6%	74.2%	67.9%	67.7%	95	55
Pere Marquette	79.6%	85.4%	81.1%	83.6%	51	55
Wolverine	77.7%	67.7%	73.4%	66.4%	56	50
Missouri	83.1%	75.5%	85.9%	71.0%	33	46
Pacific Surfliner	82.5%	87.5%	85.2%	85.9%	44	45
Pennsylvanian	75.5%	79.1%	78.0%	81.0%	80	54
Piedmont	86.2%	82.8%	78.7%	77.2%	35	37
Vermonteer	84.0%	73.1%	75.1%	71.6%	39	43
Long-Distance Routes	54.5%	53.0%	59.5%	57.0%	88	95
Minimum Standard			80.0%	80.0%		
Auto Train	76.6%	74.2%	60.5%	60.9%	61	93
California Zephyr	63.5%	54.6%	66.7%	56.3%	116	116
Cardinal	52.3%	52.6%	52.7%	53.0%	125	82
City Of New Orleans	71.8%	56.6%	75.7%	70.7%	67	77
Coast Starlight	58.9%	61.7%	65.1%	66.5%	67	82
Crescent	71.6%	71.4%	75.3%	75.0%	48	65
Empire Builder	37.7%	51.2%	49.6%	53.7%	148	124
Floridian	36.2%	31.5%	37.2%	32.5%	86	103
Lake Shore Ltd	75.6%	65.1%	77.7%	71.4%	60	71
Palmetto	69.2%	70.5%	70.4%	70.4%	43	51
Silver Meteor	60.0%	57.3%	62.8%	56.3%	70	73
Southwest Chief	35.0%	32.7%	31.8%	32.9%	133	124
Sunset Ltd	41.7%	54.1%	49.8%	63.7%	105	91
Texas Eagle	51.9%	47.8%	56.6%	53.9%	85	89

The numbers included in this document are preliminary and are for informational purposes only.

Northeast Regional: Roanoke includes all trains between Roanoke and points on the NEC; Richmond/Newport News/Norfolk includes all trains between these locations and points on the NEC.

* Acela on-time performance target is 90.0%

** Excludes on-time Customers

Host Railroad Responsible Delays

Code	Code Description	Explanation
CTI	Commuter Train Interference	Delays for meeting or following commuter trains
DCS	Signal Delays	Signal failure or All Other signal delays, wayside defect-detector false-alarms, defective road crossing protection, efficiency tests, drawbridge stuck open
DMW	Maintenance of Way	Maintenance of Way delays including holds for track repairs or MW foreman to clear
DSR	Slow Order Delays	Temporary slow orders, except heat or cold orders
DTR	Detour	Delays from detours
FTI	Freight Train Interference	Delays from freight trains
PTI	Passenger Train Interference	Delays for meeting or following All Other passenger trains
RTE	Routing	Routing-dispatching delays including diversions, late track bulletins, etc.

Amtrak Responsible Delays

Code	Code Description	Explanation
ADA	Passenger Related	All delays related to disabled passengers, wheel chair lifts, guide dogs, etc.
CAR	Car Failure	Mechanical failure on all types of cars
CCR	Cab Car Failure	Mechanical failure on Cab Cars
CON	Hold for Connection	Holding for connections from All Other trains or buses.
ENG	Locomotive Failure	Mechanical failure on engines.
HLD	Passenger Related	All delays related to passengers, checked-baggage, large groups, etc.
INJ	Injury Delay	Delay due to injured passengers or employees.
ITI	Initial Terminal Delay	Delay at initial terminal due to late arriving inbound trains causing late release of equipment.
OTH	Miscellaneous Delays	Lost-on-run, heavy trains, unable to make normal speed, etc.
SVS	Servicing	All switching and servicing delays
SYS	Crew & System	Delays related to crews including lateness, lone-engineer delays

Third-Party Delays

Code	Code Description	Explanation
CUI	Customs	U.S. and Canadian customs delays; Immigration-related delays
DBS	Debris	Debris strikes
MBO	Drawbridge Openings	Movable bridge openings for marine traffic where no bridge failure is involved
NOD	Unused Recovery Time	Wait for departure time
POL	Police-Related	Police/fire department holds on right-of-way or on-board trains
TRS	Trespassers	Trespasser incidents including road crossing accidents, trespasser / animal strikes, vehicle stuck on track ahead, bridge strikes
WTR	Weather-Related	All weather-related delays including floods/washouts, earthquake-related delays, heat or cold orders, slippery rail due to leaves

*These delay codes are applicable to Off-NEC routes only.