



Host Railroad Report

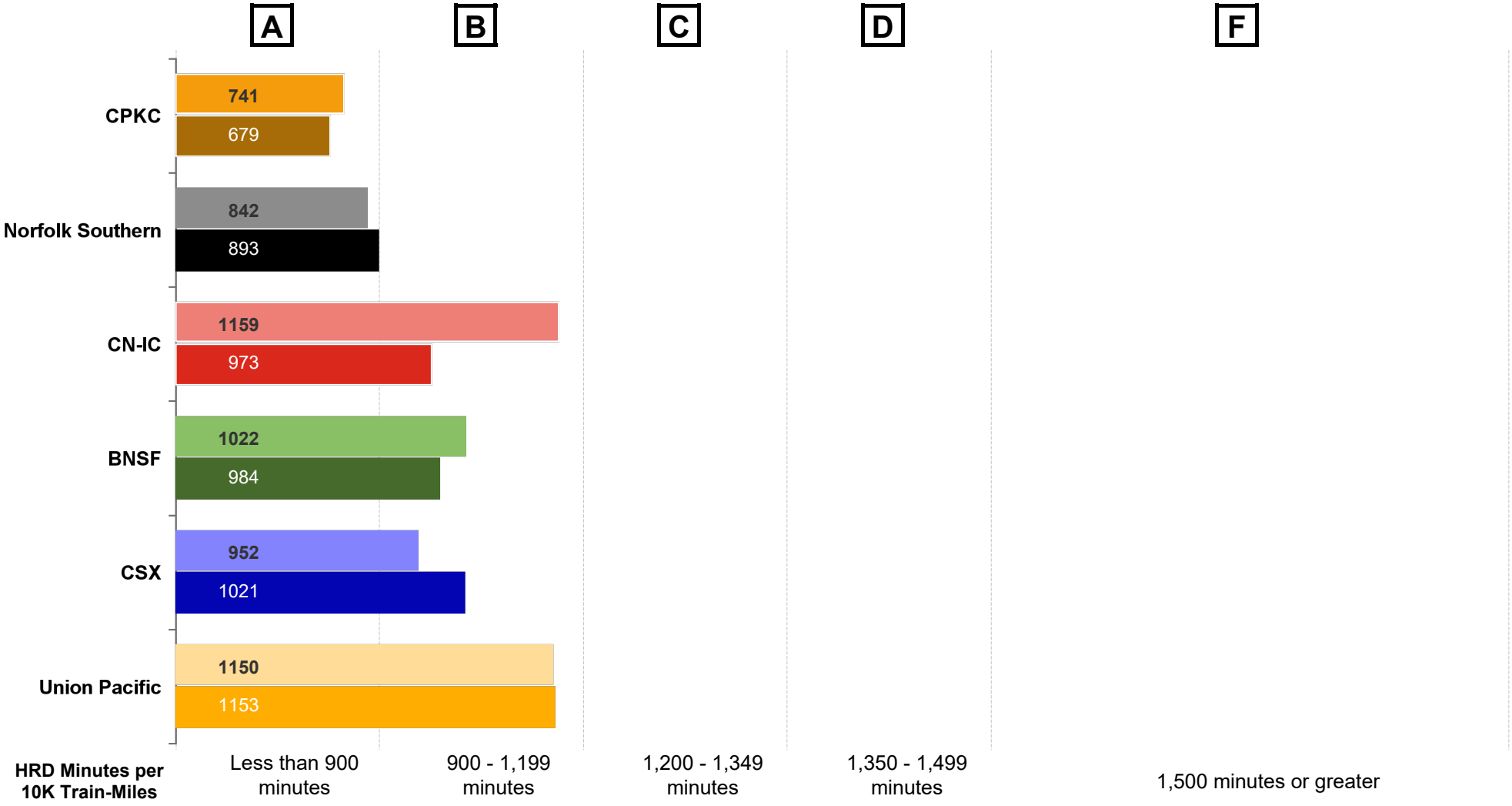
Amtrak Train Performance on Host Railroads

Data through March 2025

Host Railroad Report Card Update

Current Month and 1 Year Snapshot

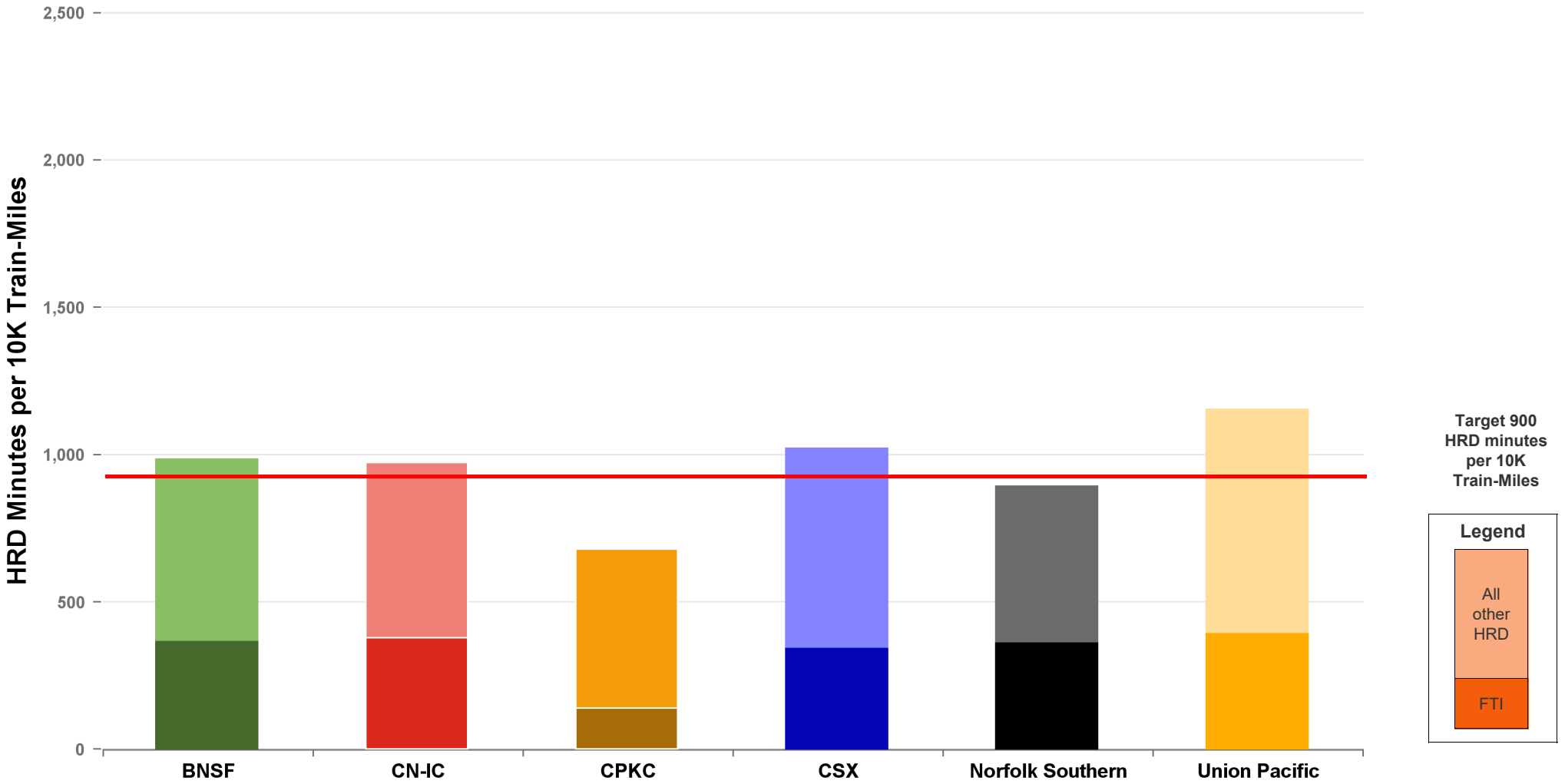
A monthly update of the Host Railroad Report Card, which grades the six major host railroads based on host responsible delay (HRD) minutes per 10,000 train-miles for the current month (lighter shade) and the most recent 12 months.



Total Host-Responsible Delays

1 Year Snapshot

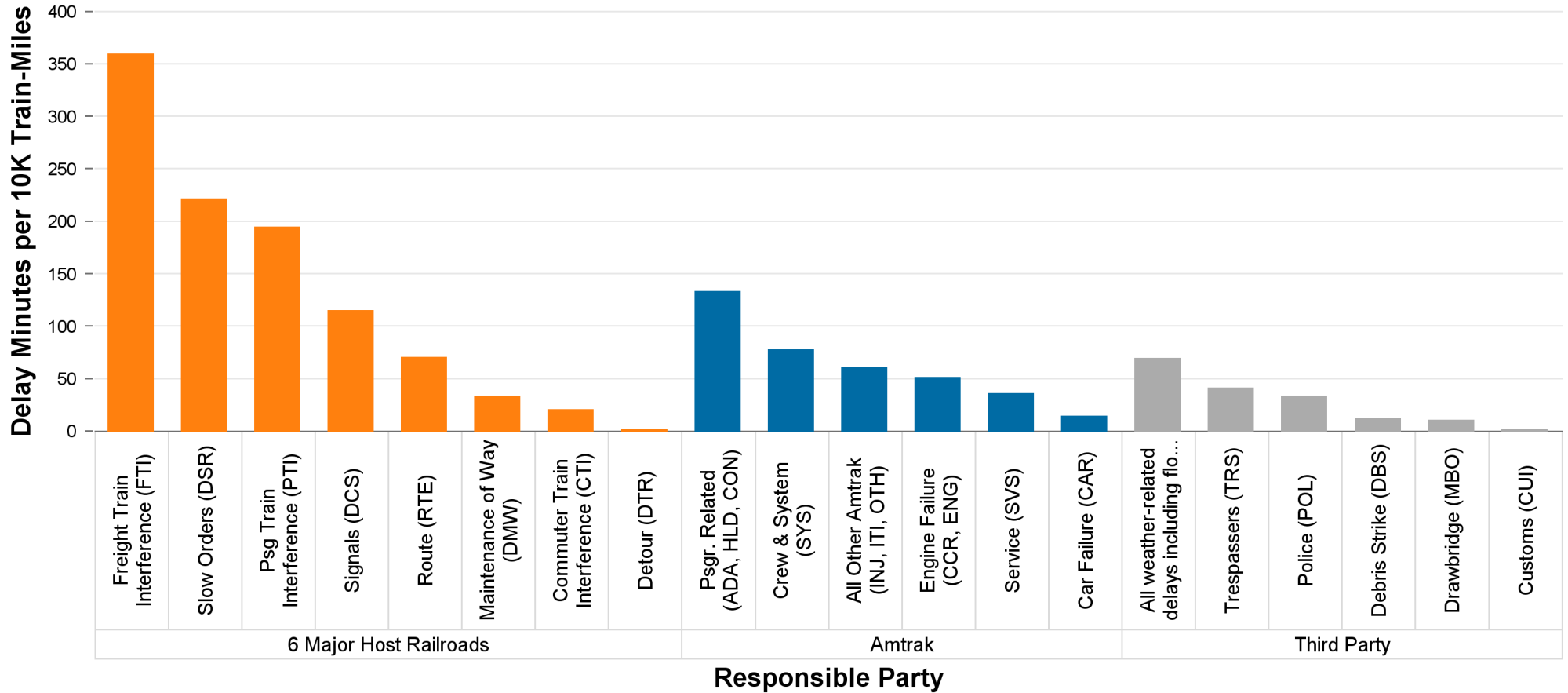
Total host-responsible delay (HRD) minutes per 10,000 train-miles incurred by Amtrak trains on the six major host railroads, with delays attributable to freight train interference (FTI) shaded.



Delays to Amtrak Trains by Responsible Party

1 Year Snapshot

Delay minutes per 10,000 train-miles on the six major host railroads categorized by delay type and responsible party.

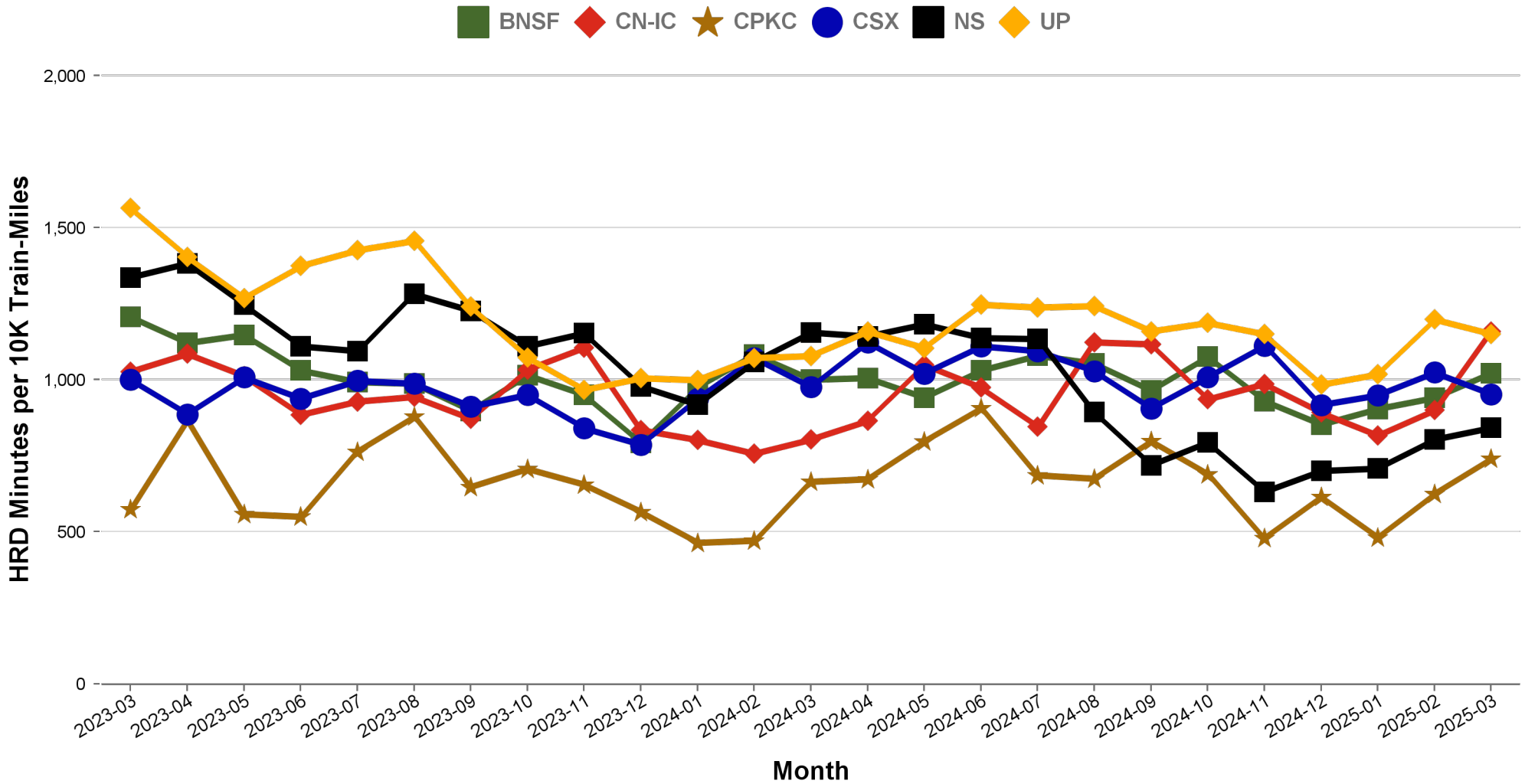


Responsible Party	6 Major Host Railroads	Amtrak	Third Party
Delay Minutes per 10K Train-Miles	1013	375	170
Percentage of Total Delays	65.0%	24.1%	10.9%

Total Host-Responsible Delays

2 Year Snapshot

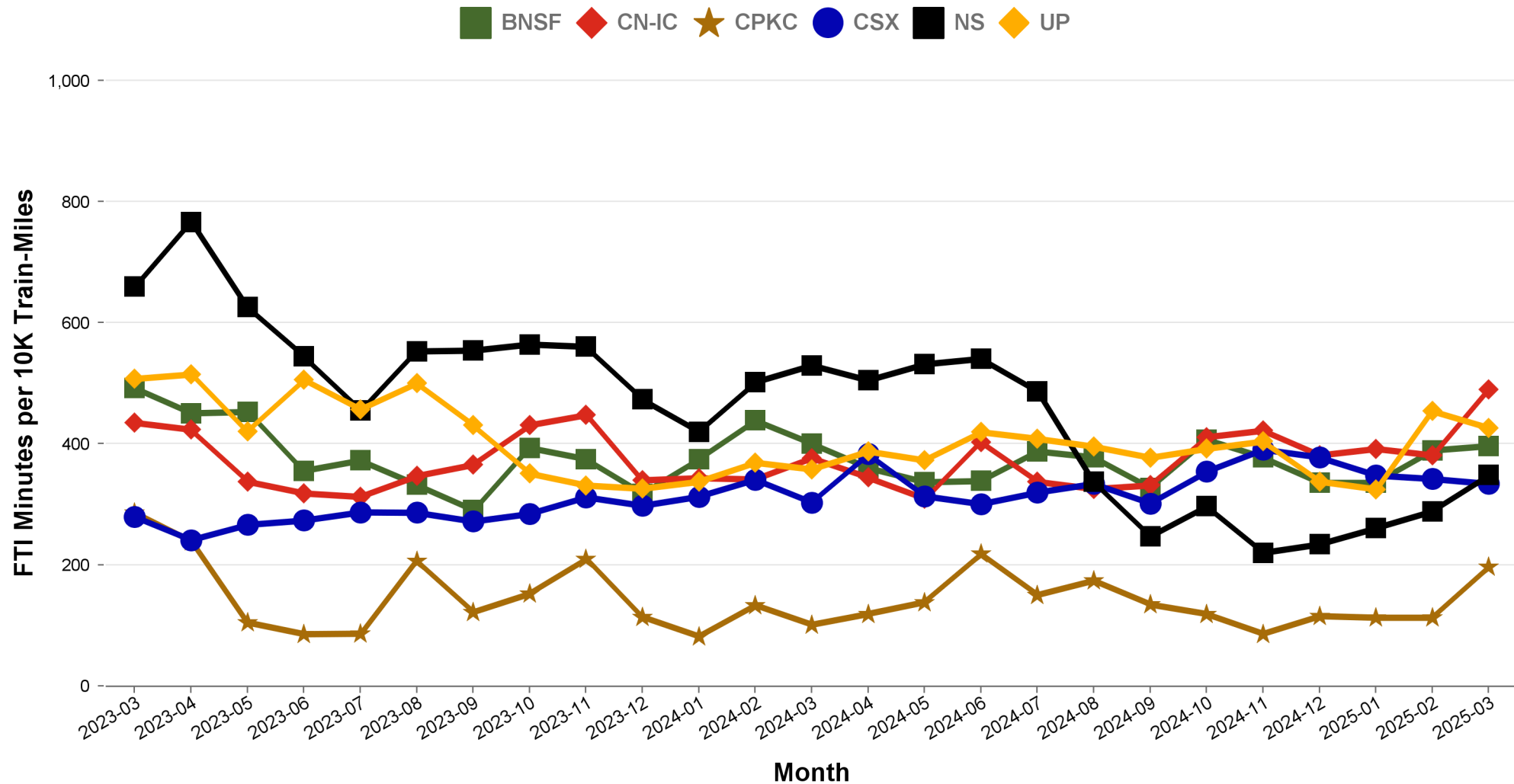
Total host-responsible delay (HRD) minutes per 10,000 train-miles incurred by Amtrak trains on each of the six major host railroads for the most recent two years.



Freight Train Interference Delays

2 Year Snapshot

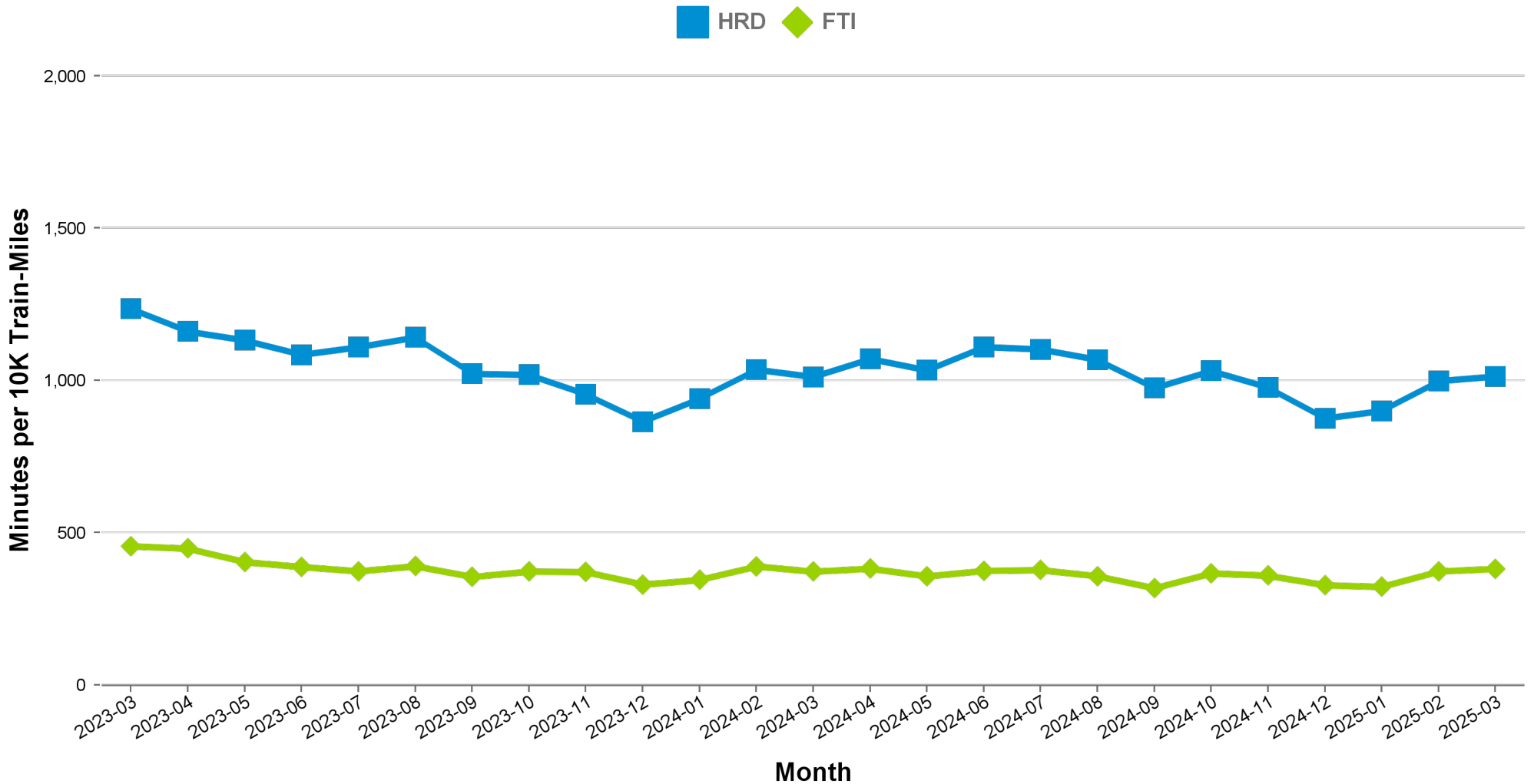
Total delay minutes per 10,000 train-miles attributable to freight train interference (FTI) incurred by Amtrak trains on each of the six major host railroads for the most recent two years.



Aggregated Host Railroad Performance Trend

2 Year Snapshot

Total host-responsible delay (HRD) and freight interference (FTI) minutes per 10,000 train-miles incurred by Amtrak trains, aggregated for the six major host railroads for the most recent two years.



Minutes of Delay per 10K Train Miles by Host for March 2025

Host	Service	Total Host Responsible Delays		Largest Two Delay Categories - Current Month				Route Miles
		Current Month	Most Recent 12 Months	#1		#2		
Target		900	900					
BNSF	California Zephyr	751	744	FTI	247	DSR	202	1027
	Carl Sandburg / Illinois Zephyr	596	749	DSR	231	FTI	161	257
	Cascades	1416	1309	FTI	442	DSR	304	317
	Coast Starlight	1572	1289	FTI	441	RTE	343	158
	Empire Builder	934	795	FTI	580	DSR	171	2147
	Heartland Flyer	1449	1578	DSR	760	FTI	591	236
	Pacific Surfliner	602	1586	FTI	203	DCS	172	22
	San Joaquins	1205	1076	PTI	463	FTI	338	284
	Southwest Chief	847	842	FTI	332	DSR	218	2206
	Sunset Ltd	2012	1119	DSR	1446	DCS	277	190
Texas Eagle	2521	2599	DSR	1332	FTI	912	116	
CN-IC	Blue Water	875	596	FTI	535	DSR	245	159
	City Of New Orleans	1216	881	FTI	508	PTI	196	930
	Illini / Saluki	643	648	FTI	225	DSR	184	304
	Lincoln Service	1719	2192	FTI	1130	DSR	295	35
	Lincoln / Missouri	1810	2714	FTI	1020	DSR	371	35
	Texas Eagle	2436	2270	FTI	1603	DCS	456	35
	Wolverine	3170	2271	DSR	2228	FTI	608	27
CPKC	Adirondack	1051	1083	DCS	448	PTI	321	178
	Borealis	889	802	FTI	239	DSR	219	376
	Empire Builder	831	693	FTI	338	DSR	198	384
	Ethan Allen Express	1262	1367	PTI	804	DSR	271	60
	Hiawatha	141	238	PTI	32	RTE	32	53
CSX	Auto Train	1268	1366	FTI	452	DSR	382	898
	Capitol Ltd	-	745		-		-	307
	Cardinal	788	830	FTI	332	DSR	331	703
	Carolinian	1484	1664	FTI	330	PTI	289	295
	Downeaster	621	786	PTI	331	DCS	136	107
	Floridian	906	1034	FTI	280	DSR	220	1413
	Lake Shore Ltd	746	742	FTI	368	RTE	148	741
	Maple Leaf	883	854	FTI	664	DSR	79	298
	New York - Niagara Falls	639	768	FTI	398	DSR	85	296
	Palmetto	1105	1055	FTI	410	PTI	257	659
	Pere Marquette	177	254	FTI	94	DCS	43	135
	Richmond / Newport News / Norfolk	1282	1353	DSR	351	FTI	302	189
	Silver Meteor	862	926	FTI	309	PTI	207	1152
Silver Star	-	1011		-		-	1209	
NS	Blue Water	1323	1671	FTI	883	DSR	216	39
	Capitol Ltd	-	1030		-		-	481
	Cardinal	1670	1432	PTI	766	FTI	373	79
	Carolinian	628	714	PTI	410	FTI	75	202
	Crescent	1029	1049	FTI	498	PTI	168	1141
	Floridian	926	791	FTI	451	RTE	186	518
	Lake Shore Ltd	914	940	FTI	415	RTE	171	339
	Pennsylvanian	606	654	FTI	301	RTE	172	249
	Pere Marquette	813	1213	FTI	265	DCS	174	39
	Piedmont	811	722	PTI	295	FTI	196	173
	Richmond / Newport News / Norfolk	395	679	DSR	137	RTE	101	81
	Roanoke	460	694	PTI	188	FTI	183	216
	Silver Star	-	593		-		-	28
Wolverine	1337	1670	FTI	650	DCS	225	39	
UP	California Zephyr	1034	1038	FTI	368	DSR	341	1381
	Capitol Corridor	516	565	PTI	217	DCS	95	171
	Cascades	1644	1746	DSR	603	PTI	424	125
	Coast Starlight	1441	1514	FTI	414	DCS	337	1162
	Lincoln Service	953	1098	FTI	415	PTI	365	231
	Lincoln / Missouri	1116	966	FTI	599	PTI	247	502
	Missouri	1223	870	FTI	854	PTI	227	271
	Pacific Surfliner	1124	1275	PTI	558	DCS	318	174
	San Joaquins	1012	1240	PTI	433	FTI	229	88
	Sunset Ltd	1373	1287	FTI	837	RTE	202	1784
	Texas Eagle	1651	1531	FTI	806	DSR	425	1073

Minutes of Delay per 10K Train Miles by Host for March 2025

Host	Service	Total Host Responsible Delays		Largest Two Delay Categories - Current Month				Route Miles
		Current Month	Most Recent 12 Months	#1		#2		
Target		900	900					
Amtrak	Adirondack	422	525	CTI	108	DSR	101	100
	Blue Water	190	511	PTI	88	DSR	42	99
	Ethan Allen Express	254	352	DSR	96	DCS	68	100
	Floridian	7052	7455	PTI	4201	RTE	938	3
	Maple Leaf	356	360	DSR	125	PTI	97	109
	New York - Albany	405	328	DSR	150	PTI	100	81
	New York - Niagara Falls	378	520	PTI	110	DSR	85	109
	Wolverine	324	698	PTI	185	DSR	64	99
BBrRR	Cardinal	1852	1303	DSR	652	PTI	496	132
CN-Canada	Adirondack	3450	4808	FTI	1560	RTE	1472	49
Fla DOT	Floridian	997	923	CTI	849	DCS	78	70
	Silver Meteor	928	1171	CTI	653	PTI	90	70
	Silver Star	-	1046		-		-	70
FR	Auto Train	4067	4502	DSR	2019	CTI	1662	16
	Floridian	2544	2464	CTI	1097	DSR	1058	61
	Silver Meteor	2702	3188	CTI	1139	DSR	813	61
	Silver Star	-	2514		-		-	61
MADOT	Springfield Shuttles	278	596	FTI	110	DSR	100	36
	Vermonteer	567	493	FTI	267	DCS	169	50
MBTA	Downeaster	1085	1124	DCS	536	CTI	191	38
Metra	Borealis	1379	1261	CTI	833	DMW	175	33
	Empire Builder	2734	2298	CTI	1940	PTI	372	29
	Hiawatha	1850	1698	CTI	1185	DCS	159	29
MIDOT	Blue Water	667	438	PTI	374	DCS	147	22
	Wolverine	628	669	PTI	564	RTE	25	134
MNRR	Acela	1503	1526	DSR	990	CTI	349	56
	Adirondack	656	1053	CTI	319	RTE	154	64
	Ethan Allen Express	1251	1320	CTI	473	PTI	294	64
	Lake Shore Ltd	934	1021	CTI	534	DSR	175	64
	Maple Leaf	623	814	CTI	339	DSR	170	64
	New York - Albany	998	997	CTI	676	DSR	123	64
	New York - Niagara Falls	1378	1159	CTI	942	DSR	145	64
	Richmond / Newport News / Norfolk	1738	1584	DSR	978	CTI	488	56
	Vermonteer	1889	2469	CTI	1244	DSR	495	56
NECR	Vermonteer	545	900	DSR	477	DMW	36	192
NMDOT	Southwest Chief	2408	2569	CTI	1636	DCS	238	80
SCRRA	Coast Starlight	1530	1645	PTI	685	CTI	649	48
	Pacific Surfliner	912	989	PTI	361	CTI	288	95
SDNRR	Pacific Surfliner	886	996	CTI	356	PTI	253	60
Sounder	Cascades	1149	962	PTI	779	CTI	284	20
	Coast Starlight	1984	2061	PTI	1121	CTI	677	20
TRE	Texas Eagle	687	714	CTI	389	RTE	176	33
VTR	Ethan Allen Express	244	808	DSR	208	DCS	35	91

The numbers included in this document are preliminary and are for informational purposes only.

Excludes hosts with fewer than 15 route miles.

Delays on the Amtrak-owned portion of the Northeast Corridor are shown in a separate report, with tighter delay standards.

Northeast Regional: Roanoke includes all trains between Roanoke and points on the NEC; Richmond / Newport News / Norfolk includes all trains between these locations and points on the NEC.

Minutes of Delay per 10K Train Miles by Service for March 2025

Service		Host	Total Host Responsible Delays		Largest Two Delay Categories - Current Month				Route Miles
			Current	Most	#1	#2			
Target			900	900					
Acela									
Acela		MNRR	1503	1526	DSR	990	CTI	349	56
All Other NEC Corridor Routes									
Northeast Regional	Richmond / Newport News / Norfolk	CSX	1282	1353	DSR	351	FTI	302	189
		NS	395	679	DSR	137	RTE	101	81
		MNRR	1738	1584	DSR	978	CTI	488	56
	Roanoke	NS	460	694	PTI	188	FTI	183	216
	Springfield Shuttles	MADOT	278	596	FTI	110	DSR	100	36
Non-NEC Corridor Routes									
Borealis		CPKC	889	802	FTI	239	DSR	219	376
		Metra	1379	1261	CTI	833	DMW	175	33
Capitol Corridor		UP	516	565	PTI	217	DCS	95	171
Carolinian		CSX	1484	1664	FTI	330	PTI	289	295
		NS	628	714	PTI	410	FTI	75	202
Cascades		BNSF	1416	1309	FTI	442	DSR	304	317
		UP	1644	1746	DSR	603	PTI	424	125
		Sounder	1149	962	PTI	779	CTI	284	20
Downeaster		CSX	621	786	PTI	331	DCS	136	107
		MBTA	1085	1124	DCS	536	CTI	191	38
Empire	Adirondack	CPKC	1051	1083	DCS	448	PTI	321	178
		Amtrak	422	525	CTI	108	DSR	101	100
		CN-Canada	3450	4808	FTI	1560	RTE	1472	49
		MNRR	656	1053	CTI	319	RTE	154	64
	Ethan Allen Express	CPKC	1262	1367	PTI	804	DSR	271	60
		Amtrak	254	352	DSR	96	DCS	68	100
		MNRR	1251	1320	CTI	473	PTI	294	64
		VTR	244	808	DSR	208	DCS	35	91
	Maple Leaf	CSX	883	854	FTI	664	DSR	79	298
		Amtrak	356	360	DSR	125	PTI	97	109
		MNRR	623	814	CTI	339	DSR	170	64
	New York - Albany	Amtrak	405	328	DSR	150	PTI	100	81
		MNRR	998	997	CTI	676	DSR	123	64
	New York - Niagara Falls	CSX	639	768	FTI	398	DSR	85	296
		Amtrak	378	520	PTI	110	DSR	85	109
		MNRR	1378	1159	CTI	942	DSR	145	64
Heartland Flyer		BNSF	1449	1578	DSR	760	FTI	591	236
Hiawatha		CPKC	141	238	PTI	32	RTE	32	53
		Metra	1850	1698	CTI	1185	DCS	159	29
Illinois	Carl Sandburg / Illinois Zephyr	BNSF	596	749	DSR	231	FTI	161	257
	Illini / Saluki	CN-IC	643	648	FTI	225	DSR	184	304
	Lincoln Service	CN-IC	1719	2192	FTI	1130	DSR	295	35
		UP	953	1098	FTI	415	PTI	365	231
Lincoln / Missouri		CN-IC	1810	2714	FTI	1020	DSR	371	35
		UP	1116	966	FTI	599	PTI	247	502
Michigan	Blue Water	CN-IC	875	596	FTI	535	DSR	245	159
		NS	1323	1671	FTI	883	DSR	216	39
		Amtrak	190	511	PTI	88	DSR	42	99
		MIDOT	667	438	PTI	374	DCS	147	22
	Pere Marquette	CSX	177	254	FTI	94	DCS	43	135
		NS	813	1213	FTI	265	DCS	174	39
	Wolverine	CN-IC	3170	2271	DSR	2228	FTI	608	27
		NS	1337	1670	FTI	650	DCS	225	39
		Amtrak	324	698	PTI	185	DSR	64	99
		MIDOT	628	669	PTI	564	RTE	25	134
Missouri		UP	1223	870	FTI	854	PTI	227	271
Pacific Surfliner		BNSF	602	1586	FTI	203	DCS	172	22
		UP	1124	1275	PTI	558	DCS	318	174
		SCRRA	912	989	PTI	361	CTI	288	95
		SDNRR	886	996	CTI	356	PTI	253	60
Pennsylvanian		NS	606	654	FTI	301	RTE	172	249
Piedmont		NS	811	722	PTI	295	FTI	196	173
San Joaquins		BNSF	1205	1076	PTI	463	FTI	338	284
		UP	1012	1240	PTI	433	FTI	229	88
Vermont		MADOT	567	493	FTI	267	DCS	169	50
		MNRR	1889	2469	CTI	1244	DSR	495	56
		NECR	545	900	DSR	477	DMW	36	192

Minutes of Delay per 10K Train Miles by Service for March 2025

Service	Host	Total Host Responsible Delays		Largest Two Delay Categories - Current Month				Route Miles
		Current	Most	#1	#2			
Target		900	900					
Long-Distance Routes								
Auto Train	CSX	1268	1366	FTI	452	DSR	382	898
	FR	4067	4502	DSR	2019	CTI	1662	16
California Zephyr	BNSF	751	744	FTI	247	DSR	202	1027
	UP	1034	1038	FTI	368	DSR	341	1381
Capitol Ltd	CSX	-	745		-		-	307
	NS	-	1030		-		-	481
Cardinal	CSX	788	830	FTI	332	DSR	331	703
	NS	1670	1432	PTI	766	FTI	373	79
	BBrRR	1852	1303	DSR	652	PTI	496	132
City Of New Orleans	CN-IC	1216	881	FTI	508	PTI	196	930
Coast Starlight	BNSF	1572	1289	FTI	441	RTE	343	158
	UP	1441	1514	FTI	414	DCS	337	1162
	SCRRA	1530	1645	PTI	685	CTI	649	48
	Sounder	1984	2061	PTI	1121	CTI	677	20
Crescent	NS	1029	1049	FTI	498	PTI	168	1141
Empire Builder	BNSF	934	795	FTI	580	DSR	171	2147
	CPKC	831	693	FTI	338	DSR	198	384
	Metra	2734	2298	CTI	1940	PTI	372	29
Floridian	CSX	906	1034	FTI	280	DSR	220	1413
	NS	926	791	FTI	451	RTE	186	518
	Amtrak	7052	7455	PTI	4201	RTE	938	3
	Fla DOT	997	923	CTI	849	DCS	78	70
	FR	2544	2464	CTI	1097	DSR	1058	61
Lake Shore Ltd	CSX	746	742	FTI	368	RTE	148	741
	NS	914	940	FTI	415	RTE	171	339
	MNRR	934	1021	CTI	534	DSR	175	64
Palmetto	CSX	1105	1055	FTI	410	PTI	257	659
Silver Meteor	CSX	862	926	FTI	309	PTI	207	1152
	Fla DOT	928	1171	CTI	653	PTI	90	70
	FR	2702	3188	CTI	1139	DSR	813	61
Silver Star	CSX	-	1011		-		-	1209
	NS	-	593		-		-	28
	Fla DOT	-	1046		-		-	70
	FR	-	2514		-		-	61
Southwest Chief	BNSF	847	842	FTI	332	DSR	218	2206
	NMDOT	2408	2569	CTI	1636	DCS	238	80
Sunset Ltd	BNSF	2012	1119	DSR	1446	DCS	277	190
	UP	1373	1287	FTI	837	RTE	202	1784
Texas Eagle	BNSF	2521	2599	DSR	1332	FTI	912	116
	CN-IC	2436	2270	FTI	1603	DCS	456	35
	UP	1651	1531	FTI	806	DSR	425	1073
	TRE	687	714	CTI	389	RTE	176	33

The numbers included in this document are preliminary and are for informational purposes only.

Excludes hosts with fewer than 15 route miles.

Delays on the Amtrak-owned portion of the Northeast Corridor are shown in a separate report, with tighter delay standards.

Northeast Regional: Roanoke includes all trains between Roanoke and points on the NEC; Richmond / Newport News /

Norfolk includes all trains between these locations and points on the NEC.



Host Railroad Report - All-Stations and Customer OTP for March 2025

Service	All-Stations OTP		Customer OTP		Avg Mins Late per Late Rider**	
	Current Month	Most Recent 12 Months	Current Month	Most Recent 12 Months	Current Month	Most Recent 12 Months
Amtrak System	76.2%	74.4%	75.8%	72.6%	61	55
NEC Corridor Routes	82.3%	79.6%	79.5%	75.4%	50	45
Minimum Standard			80.0%	80.0%		
Acela*	82.7%	78.0%	82.2%	74.3%	49	36
Keystone	90.8%	90.5%	87.6%	87.6%	42	36
Northeast Regional	79.4%	76.5%	76.9%	73.2%	51	47
On Spine Northeast Regional	83.2%	79.7%	82.4%	77.4%	52	47
Richmond / Newport News / Norfolk	70.2%	68.8%	66.1%	65.4%	50	47
Roanoke	82.7%	75.8%	79.3%	72.2%	55	50
Springfield Shuttles	88.3%	87.0%	87.4%	86.8%	39	39
Non-NEC Corridor Routes	81.0%	79.6%	78.8%	75.2%	45	45
Minimum Standard			80.0%	80.0%		
Borealis	66.4%	67.4%	62.7%	57.6%	50	51
Capitol Corridor	93.0%	91.9%	91.3%	88.9%	37	38
Carolinian	70.2%	52.1%	66.0%	49.0%	42	65
Cascades	57.6%	67.0%	60.7%	58.3%	35	44
Downeaster	93.6%	85.7%	86.6%	77.5%	29	37
Empire	84.1%	80.3%	83.4%	79.7%	52	42
Adirondack	82.7%	79.4%	82.2%	76.7%	63	38
Berkshire Flyer	-	68.0%	-	69.9%	-	44
Ethan Allen Express	89.1%	75.7%	84.4%	71.3%	32	37
Maple Leaf	72.1%	71.2%	76.1%	73.4%	79	48
New York - Albany	90.1%	89.7%	87.8%	87.0%	36	38
New York - Niagara Falls	82.4%	76.0%	78.9%	73.5%	55	46
Heartland Flyer	65.4%	69.2%	64.3%	66.9%	43	45
Hiawatha	83.5%	90.0%	82.9%	86.9%	49	40
Illinois	85.4%	80.3%	79.8%	75.8%	43	46
Carl Sandburg / Illinois Zephyr	90.6%	85.8%	86.9%	86.1%	49	52
Illini / Saluki	89.2%	85.7%	90.2%	86.3%	68	52
Lincoln Service	78.6%	72.2%	70.3%	65.1%	37	44
Lincoln / Missouri	61.8%	53.9%	55.2%	50.8%	60	49
Michigan	75.5%	68.5%	74.9%	71.4%	58	50
Blue Water	73.6%	76.4%	69.6%	71.8%	57	55
Pere Marquette	89.0%	88.8%	83.7%	84.1%	57	40
Wolverine	74.3%	63.6%	75.4%	68.4%	59	50
Missouri	71.1%	77.1%	70.3%	77.4%	103	47
Pacific Surfliner	81.8%	84.2%	85.6%	82.4%	47	42
Pennsylvanian	81.6%	68.9%	81.4%	66.7%	34	42
Piedmont	79.1%	83.7%	71.4%	76.7%	40	38
San Joaquins	75.8%	78.0%	72.8%	74.2%	39	45
Vermonteer	84.3%	69.2%	80.3%	67.3%	39	46
Long-Distance Routes	52.5%	51.4%	54.3%	54.1%	99	94
Minimum Standard			80.0%	80.0%		
Auto Train	54.8%	60.9%	39.8%	44.5%	118	117
California Zephyr	56.0%	52.1%	59.4%	55.8%	153	107
Capitol Ltd	-	63.8%	-	69.6%	-	63
Cardinal	56.4%	53.3%	53.0%	54.3%	52	84
City Of New Orleans	46.9%	63.0%	60.0%	77.4%	82	77
Coast Starlight	57.2%	53.8%	60.8%	55.1%	82	89
Crescent	69.6%	60.0%	73.7%	64.9%	87	74
Empire Builder	52.4%	51.5%	55.6%	53.2%	104	110
Floridian	42.1%	35.7%	42.2%	34.6%	86	102
Lake Shore Ltd	77.1%	74.0%	76.7%	74.0%	40	58
Palmetto	69.0%	59.7%	69.4%	60.1%	57	55
Silver Meteor	53.7%	45.9%	52.3%	42.8%	78	86
Silver Star	-	36.9%	-	33.9%	-	86
Southwest Chief	30.8%	33.3%	32.4%	34.9%	138	130
Sunset Ltd	37.0%	50.6%	42.3%	60.6%	122	121
Texas Eagle	35.1%	45.3%	39.5%	50.7%	113	93

The numbers included in this document are preliminary and are for informational purposes only.

Northeast Regional: Roanoke includes all trains between Roanoke and points on the NEC; Richmond/Newport News/Norfolk includes all trains between these locations and points on the NEC.

* Acela on-time performance target is 90.0%

** Excludes on-time Customers



Host Railroad Responsible Delays

Code	Code Description	Explanation
CTI	Commuter Train Interference	Delays for meeting or following commuter trains
DCS	Signal Delays	Signal failure or All Other signal delays, wayside defect-detector false-alarms, defective road crossing protection, efficiency tests, drawbridge stuck open
DMW	Maintenance of Way	Maintenance of Way delays including holds for track repairs or MW foreman to clear
DSR	Slow Order Delays	Temporary slow orders, except heat or cold orders
DTR	Detour	Delays from detours
FTI	Freight Train Interference	Delays from freight trains
PTI	Passenger Train Interference	Delays for meeting or following All Other passenger trains
RTE	Routing	Routing-dispatching delays including diversions, late track bulletins, etc.

Amtrak Responsible Delays

Code	Code Description	Explanation
ADA	Passenger Related	All delays related to disabled passengers, wheel chair lifts, guide dogs, etc.
CAR	Car Failure	Mechanical failure on all types of cars
CCR	Cab Car Failure	Mechanical failure on Cab Cars
CON	Hold for Connection	Holding for connections from All Other trains or buses.
ENG	Locomotive Failure	Mechanical failure on engines.
HLD	Passenger Related	All delays related to passengers, checked-baggage, large groups, etc.
INJ	Injury Delay	Delay due to injured passengers or employees.
ITI	Initial Terminal Delay	Delay at initial terminal due to late arriving inbound trains causing late release of equipment.
OTH	Miscellaneous Delays	Lost-on-run, heavy trains, unable to make normal speed, etc.
SVS	Servicing	All switching and servicing delays
SYS	Crew & System	Delays related to crews including lateness, lone-engineer delays

Third-Party Delays

Code	Code Description	Explanation
CUI	Customs	U.S. and Canadian customs delays; Immigration-related delays
DBS	Debris	Debris strikes
MBO	Drawbridge Openings	Movable bridge openings for marine traffic where no bridge failure is involved
NOD	Unused Recovery Time	Wait for departure time
POL	Police-Related	Police/fire department holds on right-of-way or on-board trains
TRS	Trespassers	Trespasser incidents including road crossing accidents, trespasser / animal strikes, vehicle stuck on track ahead, bridge strikes
WTR	Weather-Related	All weather-related delays including floods/washouts, earthquake-related delays, heat or cold orders, slippery rail due to leaves

*These delay codes are applicable to Off-NEC routes only.