



Host Railroad Report

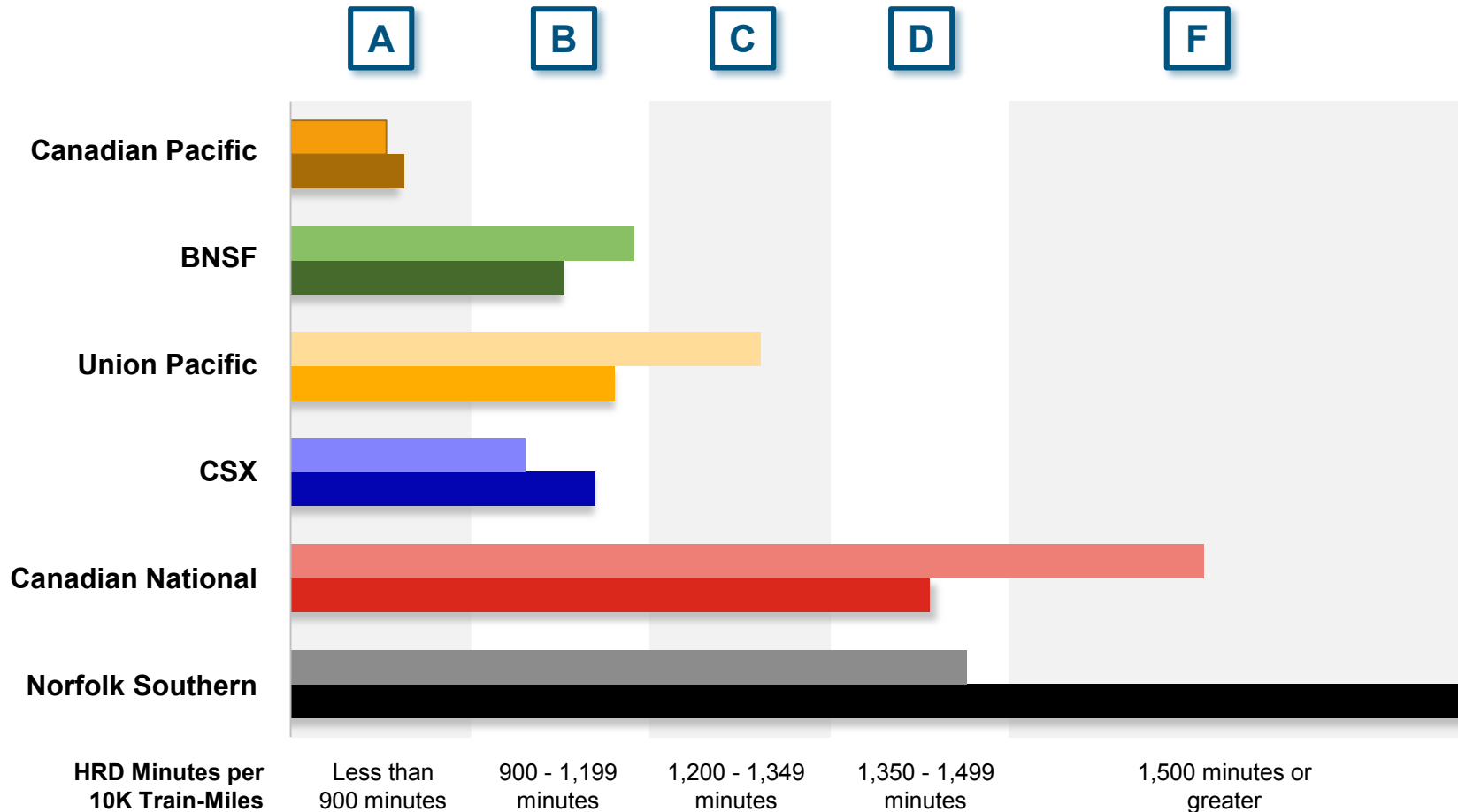
Amtrak Train Performance on Host Railroads

Data through March 2019

Host Railroad Report Card Update

Current Month and 1 Year Snapshot

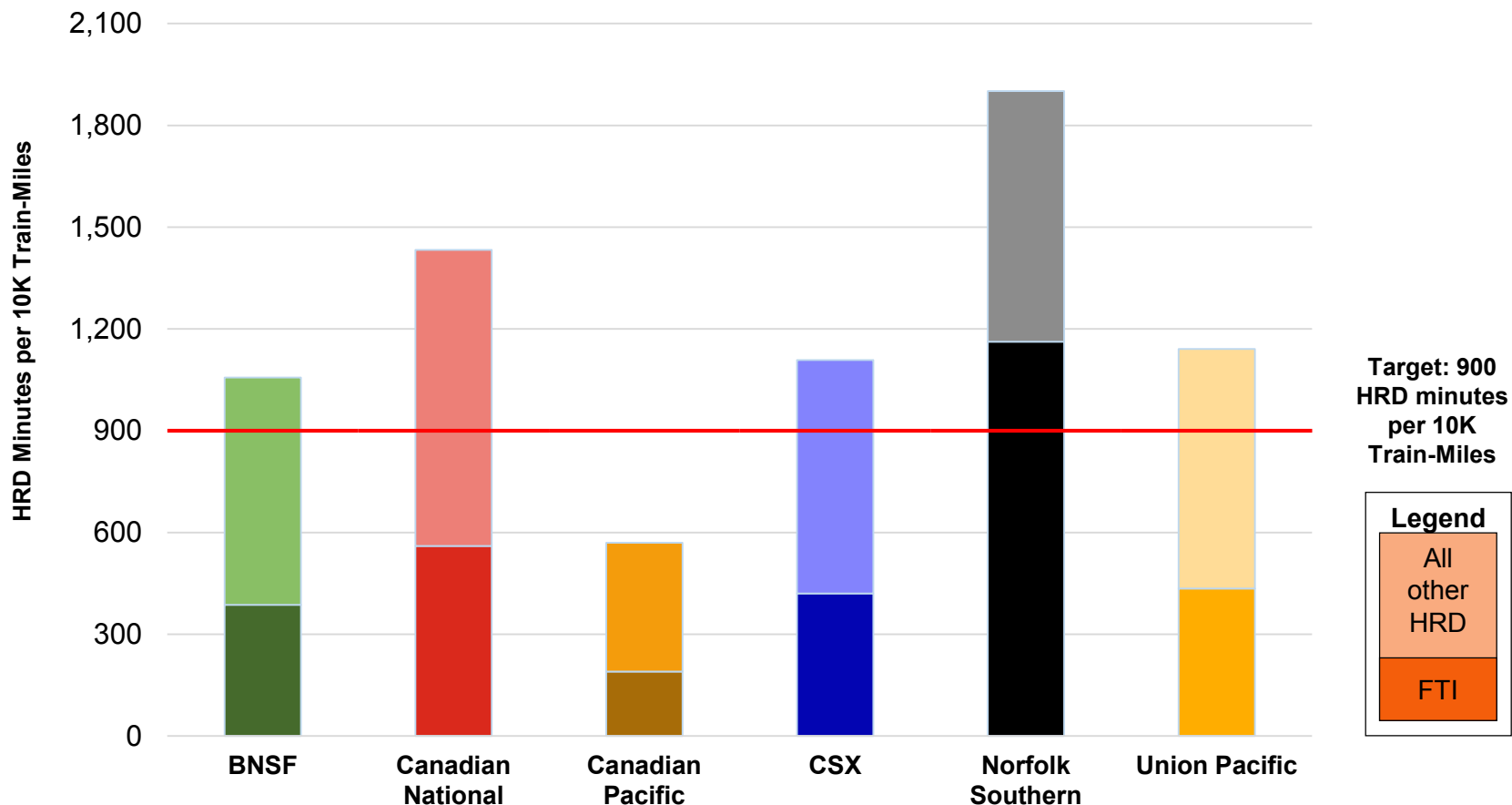
A monthly update of the Host Railroad Report Card, which grades the six major host railroads based on host responsible delay (HRD) minutes per 10,000 train-miles for the current month (lighter shade) and the most recent 12 months.



Total Host-Responsible Delays

1 Year Snapshot

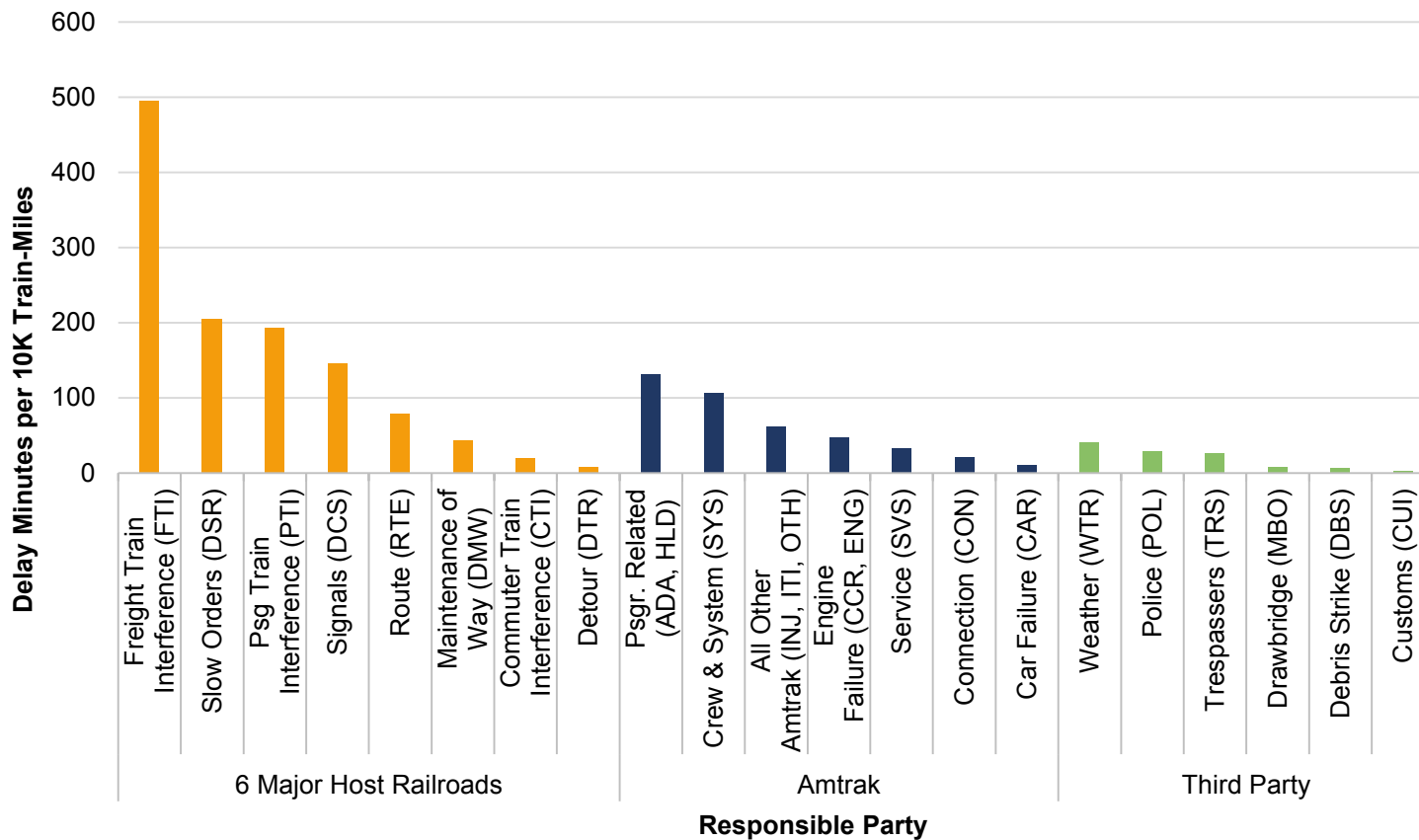
Total host-responsible delay (HRD) minutes per 10,000 train-miles incurred by Amtrak trains on the six major host railroads, with delays attributable to freight train interference (FTI) shaded.



Delays to Amtrak Trains by Responsible Party

1 Year Snapshot

Delay minutes per 10,000 train-miles on the six major host railroads categorized by delay type and responsible party.

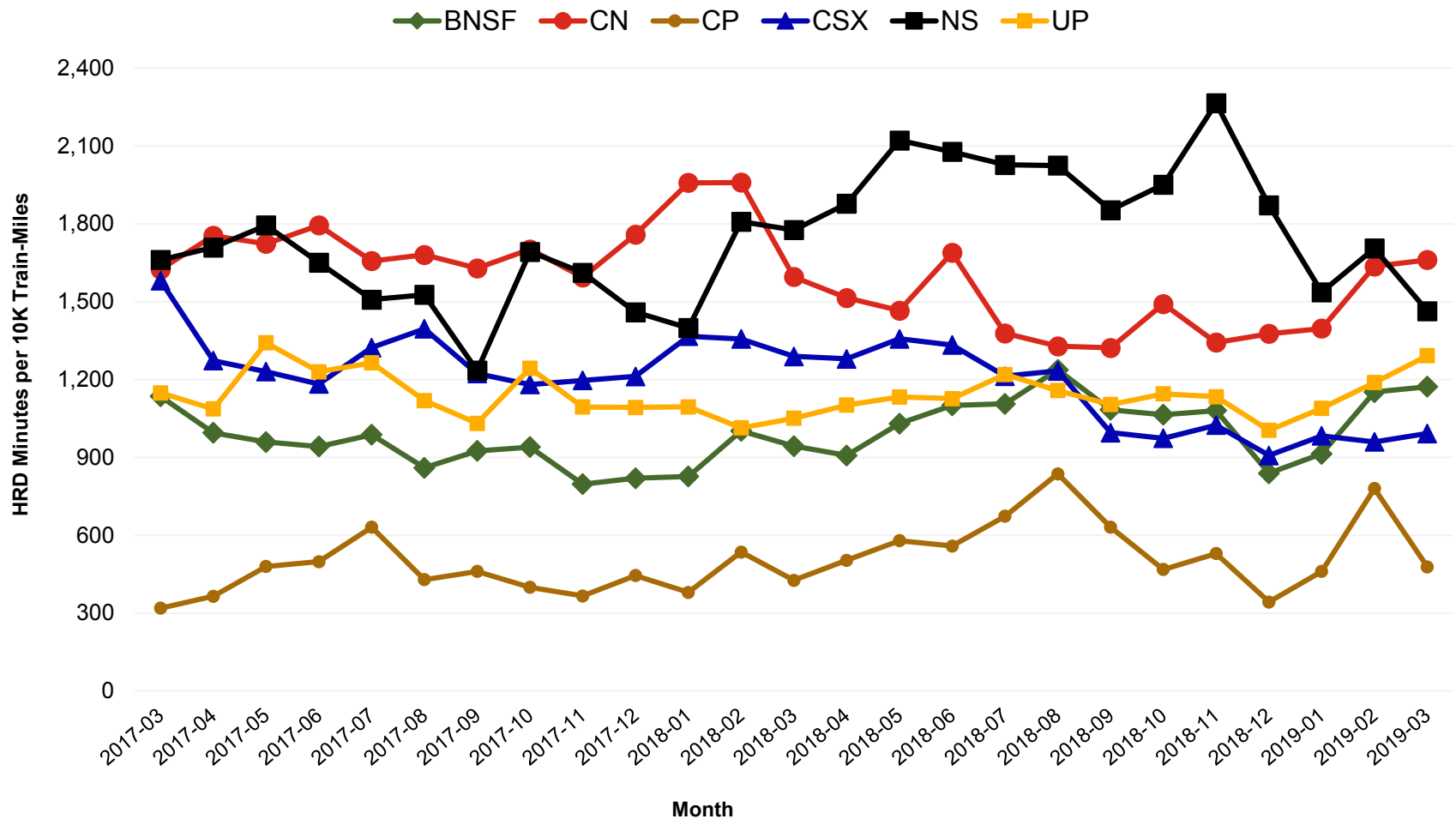


Responsible Party	6 Major Host Railroads	Amtrak	Third Party
Delay Minutes per 10K Train-Miles	1,190	413	113
Percentage of Total Delays	69.4%	24.1%	6.6%

Total Host-Responsible Delays

2 Year Snapshot

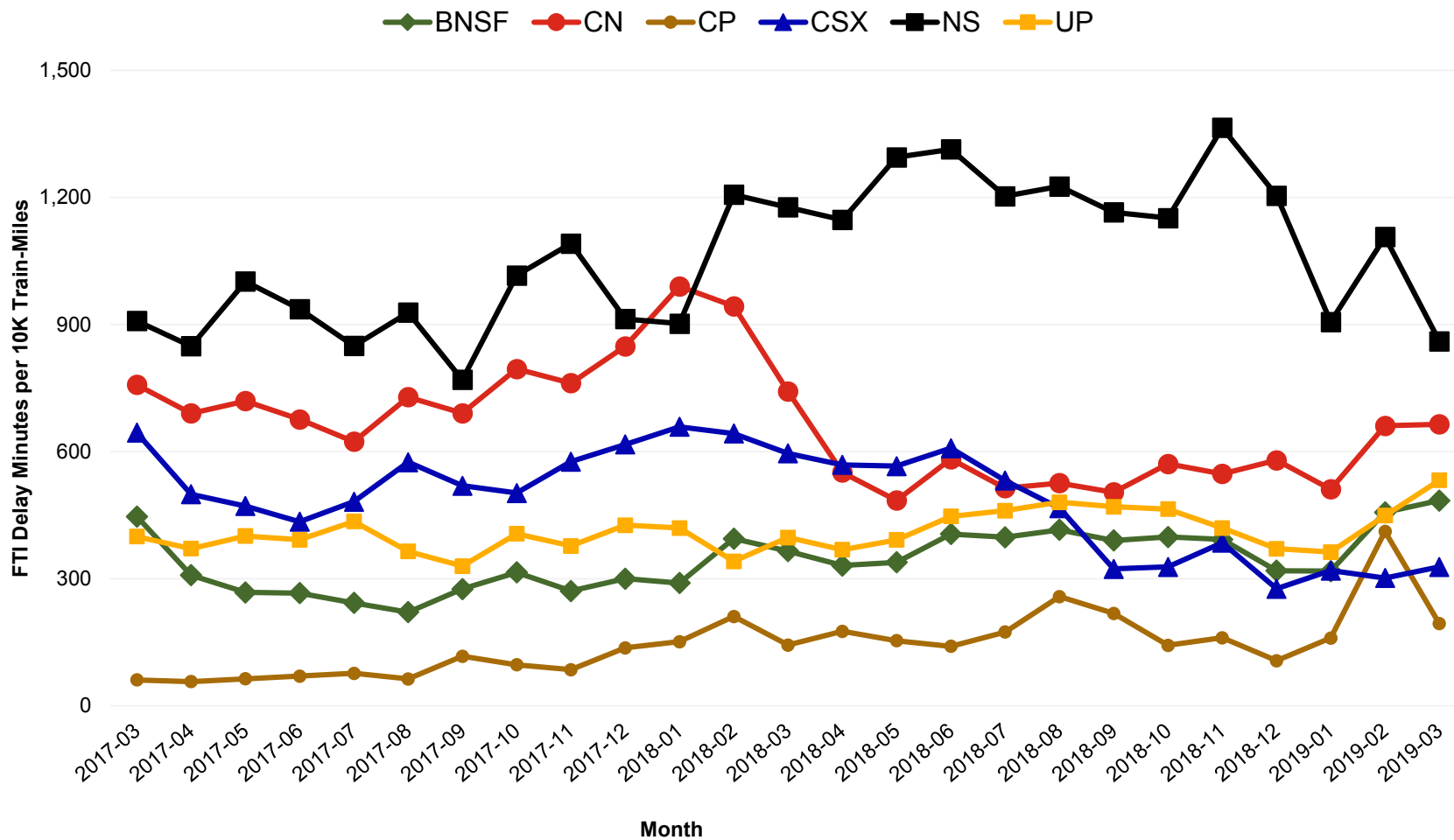
Total host-responsible delay (HRD) minutes per 10,000 train-miles incurred by Amtrak trains on each of the six major host railroads for the most recent two years.



Freight Train Interference Delays

2 Year Snapshot

Total delay minutes per 10,000 train-miles attributable to freight train interference (FTI) incurred by Amtrak trains on each of the six major host railroads for the most recent two years.



Minutes of Delay per 10K Train Miles by Host for March 2019

Host	Service	Total Host Responsible Delays		Largest Two Delay Categories - Current Month				Route Miles
		Current Month	Most Recent 12 Months	#1		#2		
Target		900	900					
BNSF	California Zephyr	2647	1353	DTR	864	FTI	802	1027
	Carl Sandburg / Illinois Zephyr	550	624	FTI	232	DSR	70	257
	Cascades	1239	1370	DSR	425	FTI	349	343
	Coast Starlight	500	743	FTI	138	RTE	108	186
	Empire Builder	1277	1086	FTI	861	DSR	188	2147
	Heartland Flyer	1516	2025	DSR	871	FTI	356	236
	Pacific Surfliner	1171	1292	DSR	319	DCS	279	22
	San Joaquins	976	964	PTI	369	FTI	352	284
	Southwest Chief	796	750	FTI	308	DCS	174	2206
	Sunset Ltd	3020	1847	FTI	1328	DSR	1261	190
Texas Eagle	2052	1967	DSR	1552	FTI	310	116	
CN	Adirondack	3781	3179	DSR	1620	RTE	899	49
	Blue Water	1663	872	FTI	1038	DMW	222	159
	City Of New Orleans	1135	1149	FTI	581	DSR	183	930
	Illini / Saluki	1572	1662	DCS	730	FTI	426	304
	Lincoln Service	3437	1976	DSR	1764	FTI	1024	35
	Texas Eagle	4987	3117	FTI	2007	DSR	1993	35
	Wolverine	2455	2175	FTI	1265	DSR	715	27
CP	Adirondack	762	761	PTI	505	FTI	96	178
	Empire Builder	642	744	FTI	378	DSR	92	384
	Ethan Allen Express	437	642	PTI	174	DCS	110	60
	Hiawatha	172	281	FTI	75	PTI	36	53
CSX	Auto Train	1358	1259	FTI	599	PTI	359	898
	Capitol Ltd	808	1153	FTI	211	DSR	200	307
	Cardinal	765	906	FTI	324	DSR	183	703
	Carolinian	1458	1590	PTI	335	FTI	301	295
	Hoosier	382	627	FTI	152	DCS	114	175
	Lake Shore Ltd	580	890	FTI	183	RTE	115	741
	Maple Leaf	1011	1214	FTI	396	RTE	326	298
	New York - Niagara Falls	830	1034	RTE	301	FTI	260	296
	Palmetto	864	1056	FTI	329	PTI	216	659
	Pere Marquette	292	416	FTI	126	DCS	120	135
	Richmond / Newport News / Norfolk	1422	1653	FTI	355	RTE	255	189
	Silver Meteor	786	823	FTI	308	DSR	163	1152
	Silver Star	1078	1089	DSR	293	FTI	288	1209
NS	Blue Water	4233	3808	FTI	3180	DMW	489	39
	Capitol Ltd	1845	2668	FTI	1425	PTI	182	481
	Cardinal	1511	1673	DCS	535	FTI	379	79
	Carolinian	743	1073	PTI	355	DCS	192	202
	Crescent	1627	1889	FTI	837	DSR	323	1141
	Lake Shore Ltd	1891	2896	FTI	1309	PTI	203	339
	Pennsylvanian	1383	1432	FTI	775	DCS	327	249
	Pere Marquette	2952	2875	FTI	2227	PTI	522	39
	Piedmont	524	1137	FTI	165	DCS	146	173
	Richmond / Newport News / Norfolk	496	472	DCS	153	DSR	116	81
	Roanoke	744	807	FTI	355	PTI	150	216
	Silver Star	627	978	FTI	194	DCS	148	28
	Wolverine	3722	3735	FTI	2930	DCS	437	39
UP	California Zephyr	799	726	FTI	299	DCS	166	1381
	Capitol Corridor	481	559	PTI	206	DCS	82	171
	Cascades	1627	1361	FTI	758	PTI	356	125
	Coast Starlight	1371	1294	FTI	473	PTI	415	1162
	Lincoln Service	1123	1007	FTI	484	PTI	359	231
	Missouri	1276	881	FTI	809	DSR	132	271
	Pacific Surfliner	1547	1390	PTI	858	DSR	179	174
	San Joaquins	1037	1180	PTI	513	FTI	174	88
	Sunset Ltd	2197	1847	FTI	1406	DSR	252	1784
	Texas Eagle	2333	1887	FTI	1164	DSR	342	1073

Minutes of Delay per 10K Train Miles by Host for March 2019

Host	Service	Total Host Responsible Delays		Largest Two Delay Categories - Current Month				Route Miles
		Current Month	Most Recent 12 Months	#1		#2		
Target		900	900					
Amtrak	Adirondack	295	533	PTI	120	RTE	84	100
	Blue Water	498	775	PTI	174	DMW	156	99
	Ethan Allen Express	433	649	PTI	212	RTE	89	100
	Maple Leaf	310	460	DCS	118	PTI	111	109
	New York - Albany	197	365	RTE	55	PTI	49	81
	New York - Niagara Falls	434	463	DCS	193	PTI	165	109
	Wolverine	685	1013	PTI	311	DMW	140	99
	BBrRR	Cardinal	1244	1281	PTI	485	DSR	289
Fla DOT	Silver Meteor	976	1308	DSR	443	CTI	422	68
	Silver Star	969	1404	CTI	417	DSR	403	68
FR	Auto Train	1946	2788	CTI	753	DCS	667	16
	Silver Meteor	1340	1715	CTI	548	PTI	334	61
	Silver Star	744	1141	DSR	331	CTI	193	61
MADOT	Vermonteer	1913	2179	DSR	1760	DCS	134	50
MBTA	Downeaster	978	1108	CTI	400	DCS	122	38
Metra	Empire Builder	1555	1654	CTI	1206	DCS	153	29
	Hiawatha	1403	1408	CTI	848	DSR	251	29
MIDOT	Blue Water	313	386	DCS	246	DMW	52	22
	Wolverine	465	540	PTI	304	DCS	70	134
MNRR	Acela Express	1998	2002	DSR	897	CTI	760	56
	Adirondack	630	1376	CTI	324	DSR	122	64
	All Other Northeast Regional	2312	2185	DSR	1194	CTI	910	56
	Ethan Allen Express	1048	1561	CTI	524	DMW	233	64
	Lake Shore Ltd	1063	1505	CTI	592	RTE	172	64
	Maple Leaf	696	1293	CTI	329	RTE	235	64
	New York - Albany	832	1374	CTI	505	RTE	134	64
	New York - Niagara Falls	1120	1840	CTI	611	RTE	122	64
	Richmond / Newport News / Norfolk	2342	2567	DSR	1291	CTI	630	56
	Vermonteer	2609	2746	DSR	1083	CTI	930	56
NECR	Vermonteer	767	1194	DSR	626	FTI	85	238
NMDOT	Southwest Chief	612	1792	CTI	313	DCS	121	80
PanAm	Downeaster	791	1126	PTI	341	DSR	181	107
SCRRA	Coast Starlight	1705	2340	PTI	750	CTI	628	48
	Pacific Surfliner	972	1043	PTI	425	CTI	355	95
SDNRR	Pacific Surfliner	1807	1621	CTI	698	PTI	582	60
TRE	Texas Eagle	1956	2638	CTI	1015	DSR	279	33
VTR	Ethan Allen Express	115	199	DSR	74	DCS	40	24

The numbers included in this document are preliminary and are for informational purposes only.

Excludes hosts with fewer than 15 route miles.

Delays on the Amtrak-owned portion of the Northeast Corridor are shown in a separate report, with tighter delay standards.

Northeast Regional: Roanoke includes all trains between Roanoke and points on the NEC; Richmond / Newport News / Norfolk includes all trains between these locations and points on the NEC.

Minutes of Delay per 10K Train Miles by Service for March 2019

Service	Host	Total Host Responsible Delays		Largest Two Delay Categories - Current Month				Route Miles	
		Current Month	Most Recent 12 Months	#1		#2			
Target		900	900						
Acela Express									
Acela Express	MNRR	1998	2002	DSR	897	CTI	760	56	
All Other NEC Corridor Routes									
Northeast Regional	Richmond / Newport News / Norfolk	CSX	1422	1653	FTI	355	RTE	255	189
		NS	496	472	DCS	153	DSR	116	81
		MNRR	2342	2567	DSR	1291	CTI	630	56
	All Other Northeast Regional	MNRR	2312	2185	DSR	1194	CTI	910	56
	Roanoke	NS	744	807	FTI	355	PTI	150	216
Non-NEC Corridor Routes									
Capitol Corridor		UP	481	559	PTI	206	DCS	82	171
Carolinian		CSX	1458	1590	PTI	335	FTI	301	295
		NS	743	1073	PTI	355	DCS	192	202
Cascades		BNSF	1239	1370	DSR	425	FTI	349	343
		UP	1627	1361	FTI	758	PTI	356	125
Downeaster		MBTA	978	1108	CTI	400	DCS	122	38
		PanAm	791	1126	PTI	341	DSR	181	107
Empire	Adirondack	CN	3781	3179	DSR	1620	RTE	899	49
		CP	762	761	PTI	505	FTI	96	178
		Amtrak	295	533	PTI	120	RTE	84	100
	Ethan Allen Express	MNRR	630	1376	CTI	324	DSR	122	64
		CP	437	642	PTI	174	DCS	110	60
		Amtrak	433	649	PTI	212	RTE	89	100
		MNRR	1048	1561	CTI	524	DMW	233	64
	Maple Leaf	VTR	115	199	DSR	74	DCS	40	24
		CSX	1011	1214	FTI	396	RTE	326	298
		Amtrak	310	460	DCS	118	PTI	111	109
New York - Albany	MNRR	696	1293	CTI	329	RTE	235	64	
	Amtrak	197	365	RTE	55	PTI	49	81	
	MNRR	832	1374	CTI	505	RTE	134	64	
New York - Niagara Falls	CSX	830	1034	RTE	301	FTI	260	296	
	Amtrak	434	463	DCS	193	PTI	165	109	
	MNRR	1120	1840	CTI	611	RTE	122	64	
Heartland Flyer		BNSF	1516	2025	DSR	871	FTI	356	236
Hiawatha		CP	172	281	FTI	75	PTI	36	53
		Metra	1403	1408	CTI	848	DSR	251	29
Hoosier		CSX	382	627	FTI	152	DCS	114	175
Illinois	Carl Sandburg / Illinois Zephyr	BNSF	550	624	FTI	232	DSR	70	257
	Illini / Saluki	CN	1572	1662	DCS	730	FTI	426	304
	Lincoln Service	CN	3437	1976	DSR	1764	FTI	1024	35
		UP	1123	1007	FTI	484	PTI	359	231
Michigan	Blue Water	CN	1663	872	FTI	1038	DMW	222	159
		NS	4233	3808	FTI	3180	DMW	489	39
		Amtrak	498	775	PTI	174	DMW	156	99
	Pere Marquette	MIDOT	313	386	DCS	246	DMW	52	22
		CSX	292	416	FTI	126	DCS	120	135
		NS	2952	2875	FTI	2227	PTI	522	39
	Wolverine	CN	2455	2175	FTI	1265	DSR	715	27
		NS	3722	3735	FTI	2930	DCS	437	39
		Amtrak	685	1013	PTI	311	DMW	140	99
		MIDOT	465	540	PTI	304	DCS	70	134
Missouri		UP	1276	881	FTI	809	DSR	132	271
Pacific Surfliner		BNSF	1171	1292	DSR	319	DCS	279	22
		UP	1547	1390	PTI	858	DSR	179	174
		SCRRA	972	1043	PTI	425	CTI	355	95
		SDNRR	1807	1621	CTI	698	PTI	582	60
Pennsylvanian		NS	1383	1432	FTI	775	DCS	327	249
Piedmont		NS	524	1137	FTI	165	DCS	146	173
San Joaquins		BNSF	976	964	PTI	369	FTI	352	284
		UP	1037	1180	PTI	513	FTI	174	88
Vermont		MADOT	1913	2179	DSR	1760	DCS	134	50
		MNRR	2609	2746	DSR	1083	CTI	930	56
		NECR	767	1194	DSR	626	FTI	85	238

Minutes of Delay per 10K Train Miles by Service for March 2019

Service	Host	Total Host Responsible Delays		Largest Two Delay Categories - Current Month				Route Miles
		Current Month	Most Recent 12 Months	#1		#2		
Target		900	900					
Long-Distance Routes								
Auto Train	CSX	1358	1259	FTI	599	PTI	359	898
	FR	1946	2788	CTI	753	DCS	667	16
California Zephyr	BNSF	2647	1353	DTR	864	FTI	802	1027
	UP	799	726	FTI	299	DCS	166	1381
Capitol Ltd	CSX	808	1153	FTI	211	DSR	200	307
	NS	1845	2668	FTI	1425	PTI	182	481
Cardinal	CSX	765	906	FTI	324	DSR	183	703
	NS	1511	1673	DCS	535	FTI	379	79
	BBrRR	1244	1281	PTI	485	DSR	289	132
City Of New Orleans	CN	1135	1149	FTI	581	DSR	183	930
Coast Starlight	BNSF	500	743	FTI	138	RTE	108	186
	UP	1371	1294	FTI	473	PTI	415	1162
	SCRRA	1705	2340	PTI	750	CTI	628	48
Crescent	NS	1627	1889	FTI	837	DSR	323	1141
Empire Builder	BNSF	1277	1086	FTI	861	DSR	188	2147
	CP	642	744	FTI	378	DSR	92	384
	Metra	1555	1654	CTI	1206	DCS	153	29
Lake Shore Ltd	CSX	580	890	FTI	183	RTE	115	741
	NS	1891	2896	FTI	1309	PTI	203	339
	MNRR	1063	1505	CTI	592	RTE	172	64
Palmetto	CSX	864	1056	FTI	329	PTI	216	659
Silver Meteor	CSX	786	823	FTI	308	DSR	163	1152
	Fla DOT	976	1308	DSR	443	CTI	422	68
	FR	1340	1715	CTI	548	PTI	334	61
Silver Star	CSX	1078	1089	DSR	293	FTI	288	1209
	NS	627	978	FTI	194	DCS	148	28
	Fla DOT	969	1404	CTI	417	DSR	403	68
	FR	744	1141	DSR	331	CTI	193	61
Southwest Chief	BNSF	796	750	FTI	308	DCS	174	2206
	NMDOT	612	1792	CTI	313	DCS	121	80
Sunset Ltd	BNSF	3020	1847	FTI	1328	DSR	1261	190
	UP	2197	1847	FTI	1406	DSR	252	1784
Texas Eagle	BNSF	2052	1967	DSR	1552	FTI	310	116
	CN	4987	3117	FTI	2007	DSR	1993	35
	UP	2333	1887	FTI	1164	DSR	342	1073
	TRE	1956	2638	CTI	1015	DSR	279	33

The numbers included in this document are preliminary and are for informational purposes only.

Excludes hosts with fewer than 15 route miles.

Delays on the Amtrak-owned portion of the Northeast Corridor are shown in a separate report, with tighter delay standards.

Northeast Regional: Roanoke includes all trains between Roanoke and points on the NEC; Richmond / Newport News / Norfolk includes all trains between these locations and points on the NEC.

All Stations and Customer OTP for March 2019

Service	All Stations OTP		Customer OTP		Avg Mins Late per Late Rider**	
	Current Month	Most Recent 12 Months	Current Month	Most Recent 12 Months	Current Month	Most Recent 12 Months
Amtrak System	75.4%	72.5%	77.6%	72.7%	64	58
NEC Corridor Routes	90.9%	84.6%	89.5%	82.6%	31	37
Target*	80.0%	80.0%				
Acela Express*	90.9%	81.5%	88.7%	80.8%	22	29
Keystone	94.4%	92.4%	96.4%	91.4%	29	36
Northeast Regional	89.6%	82.8%	87.9%	80.9%	35	41
All Other Northeast Regional	94.6%	87.7%	93.5%	86.5%	35	39
Richmond / Newport News / Norfolk	82.0%	75.8%	79.9%	72.7%	35	42
Roanoke	79.3%	74.6%	76.8%	71.2%	38	43
Springfield Shuttles	94.1%	85.5%	91.9%	86.5%	27	35
Non-NEC Corridor Routes	78.4%	75.9%	75.1%	71.7%	41	43
Target	80.0%	80.0%				
Capitol Corridor	91.8%	89.6%	91.2%	88.5%	27	30
Carolinian	75.5%	51.5%	78.5%	49.6%	45	61
Cascades	62.0%	60.7%	56.0%	54.1%	37	41
Downeaster	90.7%	82.0%	83.7%	75.7%	35	35
Empire	85.8%	77.6%	86.9%	74.6%	40	41
Adirondack	83.7%	69.8%	83.8%	67.1%	47	48
Ethan Allen Express	91.7%	87.4%	90.7%	79.6%	42	30
Maple Leaf	76.4%	66.2%	71.6%	64.4%	34	47
New York - Albany	95.6%	89.9%	95.7%	85.1%	41	36
New York - Niagara Falls	77.7%	69.3%	76.3%	60.6%	40	41
Heartland Flyer	70.7%	60.1%	64.1%	46.3%	30	43
Hiawatha	95.3%	95.0%	94.7%	94.4%	72	43
Hoosier	80.5%	81.4%	86.2%	83.6%	63	47
Illinois	67.1%	68.1%	58.8%	64.1%	40	44
Carl Sandburg / Illinois Zephyr	91.5%	86.7%	89.4%	83.7%	39	47
Illini / Saluki	42.4%	39.2%	33.4%	28.5%	36	43
Lincoln Service	68.4%	74.6%	60.6%	72.8%	43	44
Michigan	67.8%	62.9%	54.5%	50.0%	43	44
Blue Water	64.5%	72.2%	45.2%	56.2%	49	48
Pere Marquette	84.2%	81.8%	75.2%	73.6%	41	38
Wolverine	66.7%	58.0%	54.3%	43.0%	40	44
Missouri	42.8%	77.6%	69.8%	77.9%	79	49
Pacific Surfliner	73.0%	76.1%	68.2%	71.8%	43	45
Pennsylvanian	63.9%	69.8%	66.8%	68.4%	44	44
Piedmont	91.2%	74.9%	87.9%	66.3%	31	40
San Joaquins	70.6%	70.9%	62.4%	62.9%	38	40
Vermont	93.1%	73.0%	95.9%	75.8%	59	46
Long-Distance Routes	39.9%	41.9%	44.0%	42.2%	116	102
Target	80.0%	80.0%				
Auto Train	82.3%	75.3%	68.6%	63.2%	79	97
California Zephyr	22.9%	40.4%	38.5%	41.5%	288	134
Capitol Ltd	49.6%	34.7%	49.9%	22.6%	56	103
Cardinal	52.0%	52.8%	56.2%	55.2%	95	78
City Of New Orleans	40.7%	54.4%	58.9%	69.2%	59	63
Coast Starlight	47.8%	50.4%	49.0%	52.4%	63	89
Crescent	22.4%	26.9%	21.5%	23.8%	116	134
Empire Builder	31.3%	41.3%	31.8%	39.5%	191	138
Lake Shore Ltd	67.7%	43.4%	62.6%	34.7%	60	85
Palmetto	78.9%	61.8%	79.3%	59.3%	33	57
Silver Meteor	53.2%	49.8%	47.3%	43.3%	58	78
Silver Star	35.9%	37.0%	29.6%	29.9%	70	83
Southwest Chief	40.5%	39.0%	36.2%	34.8%	92	102
Sunset Ltd	8.7%	21.1%	7.9%	30.7%	165	141
Texas Eagle	15.8%	33.5%	11.2%	31.3%	126	110

The numbers included in this document are preliminary and are for informational purposes only.

Northeast Regional: Roanoke includes all trains between Roanoke and points on the NEC; Richmond/Newport News/Norfolk includes all trains between these locations and points on the NEC.

* Acela Express on time performance target is 90.0%

** Excludes on time Customers

Host Railroad Responsible Delays

Code	Code Description	Explanation
CTI	Commuter Train Interference	Delays for meeting or following commuter trains
DCS	Signal Delays	Signal failure or All Other signal delays, wayside defect-detector false-alarms, defective road crossing protection, efficiency tests, drawbridge stuck open
DMW	Maintenance of Way	Maintenance of Way delays including holds for track repairs or MW foreman to clear
DSR	Slow Order Delays	Temporary slow orders, except heat or cold orders
DTR	Detour	Delays from detours
FTI	Freight Train Interference	Delays from freight trains
PTI	Passenger Train Interference	Delays for meeting or following All Other passenger trains
RTE	Routing	Routing-dispatching delays including diversions, late track bulletins, etc.

Amtrak Responsible Delays

Code	Code Description	Explanation
ADA	Passenger Related	All delays related to disabled passengers, wheel chair lifts, guide dogs, etc.
CAR	Car Failure	Mechanical failure on all types of cars
CCR	Cab Car Failure	Mechanical failure on Cab Cars
CON	Hold for Connection	Holding for connections from All Other trains or buses.
ENG	Locomotive Failure	Mechanical failure on engines.
HLD	Passenger Related	All delays related to passengers, checked-baggage, large groups, etc.
INJ	Injury Delay	Delay due to injured passengers or employees.
ITI	Initial Terminal Delay	Delay at initial terminal due to late arriving inbound trains causing late release of equipment.
OTH	Miscellaneous Delays	Lost-on-run, heavy trains, unable to make normal speed, etc.
SVS	Servicing	All switching and servicing delays
SYS	Crew & System	Delays related to crews including lateness, lone-engineer delays

Third-Party Delays

Code	Code Description	Explanation
CUI	Customs	U.S. and Canadian customs delays; Immigration-related delays
DBS	Debris	Debris strikes
MBO	Drawbridge Openings	Movable bridge openings for marine traffic where no bridge failure is involved
NOD	Unused Recovery Time	Wait for departure time
POL	Police-Related	Police/fire department holds on right-of-way or on-board trains
TRS	Trespassers	Trespasser incidents including road crossing accidents, trespasser / animal strikes, vehicle stuck on track ahead, bridge strikes
WTR	Weather-Related	All severe-weather delays, landslides or washouts, earthquake-related delays, heat or cold orders

*These delay codes are applicable to Off-NEC routes only.