



Host Railroad Report

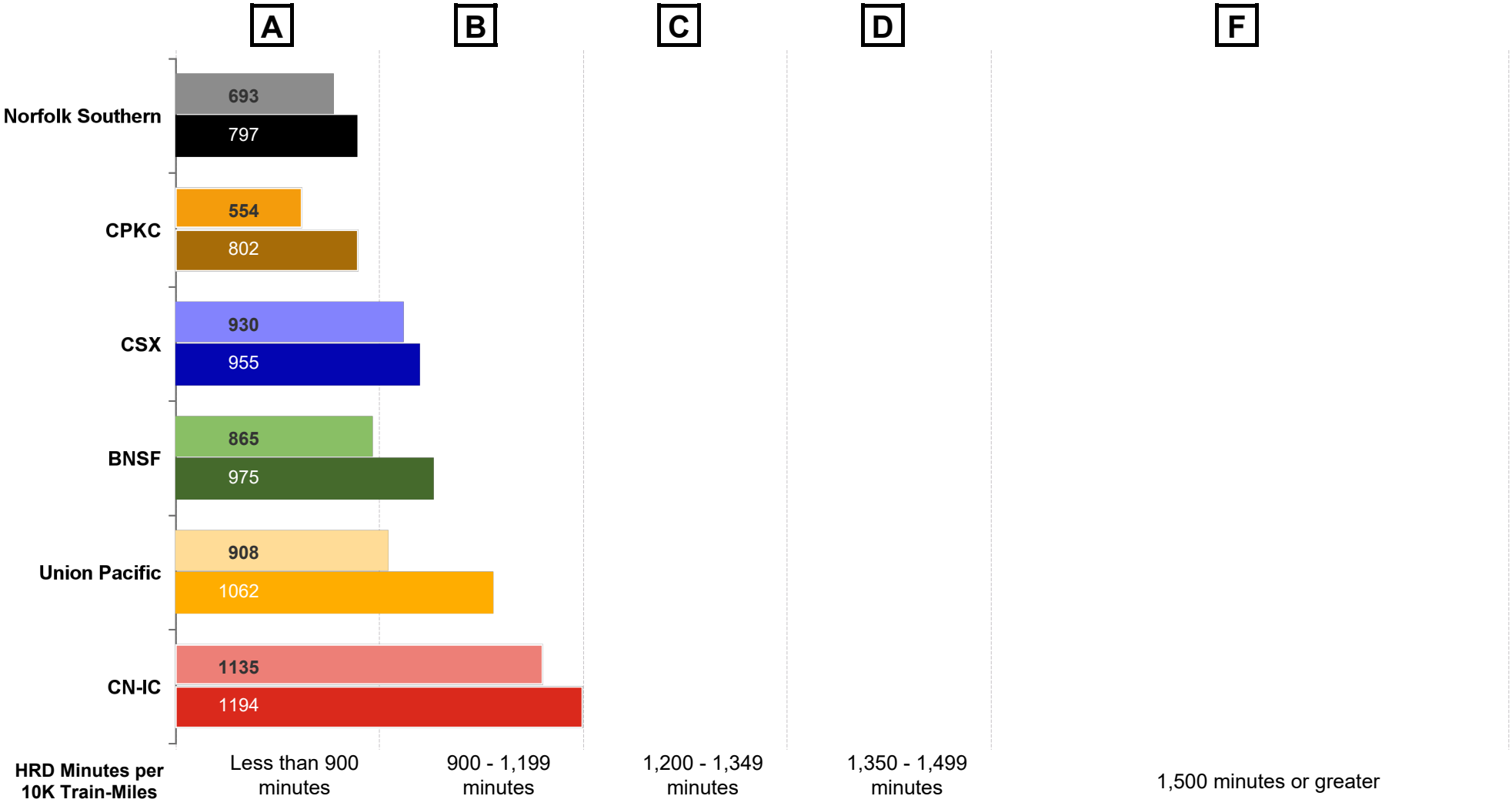
Amtrak Train Performance on Host Railroads

Data through January 2026

Host Railroad Report Card Update

Current Month and 1 Year Snapshot

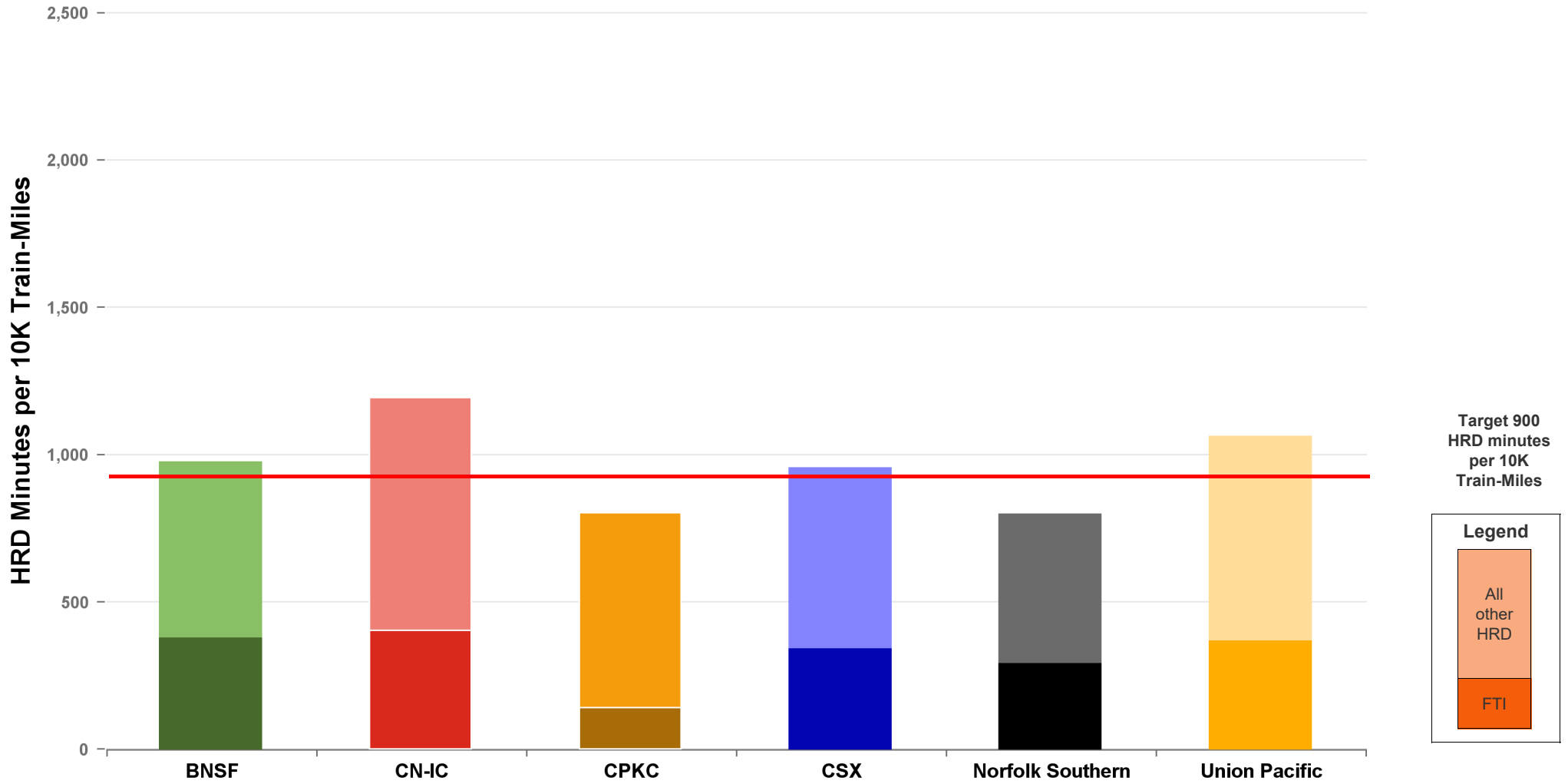
A monthly update of the Host Railroad Report Card, which grades the six major host railroads based on host responsible delay (HRD) minutes per 10,000 train-miles for the current month (lighter shade) and the most recent 12 months.



Total Host-Responsible Delays

1 Year Snapshot

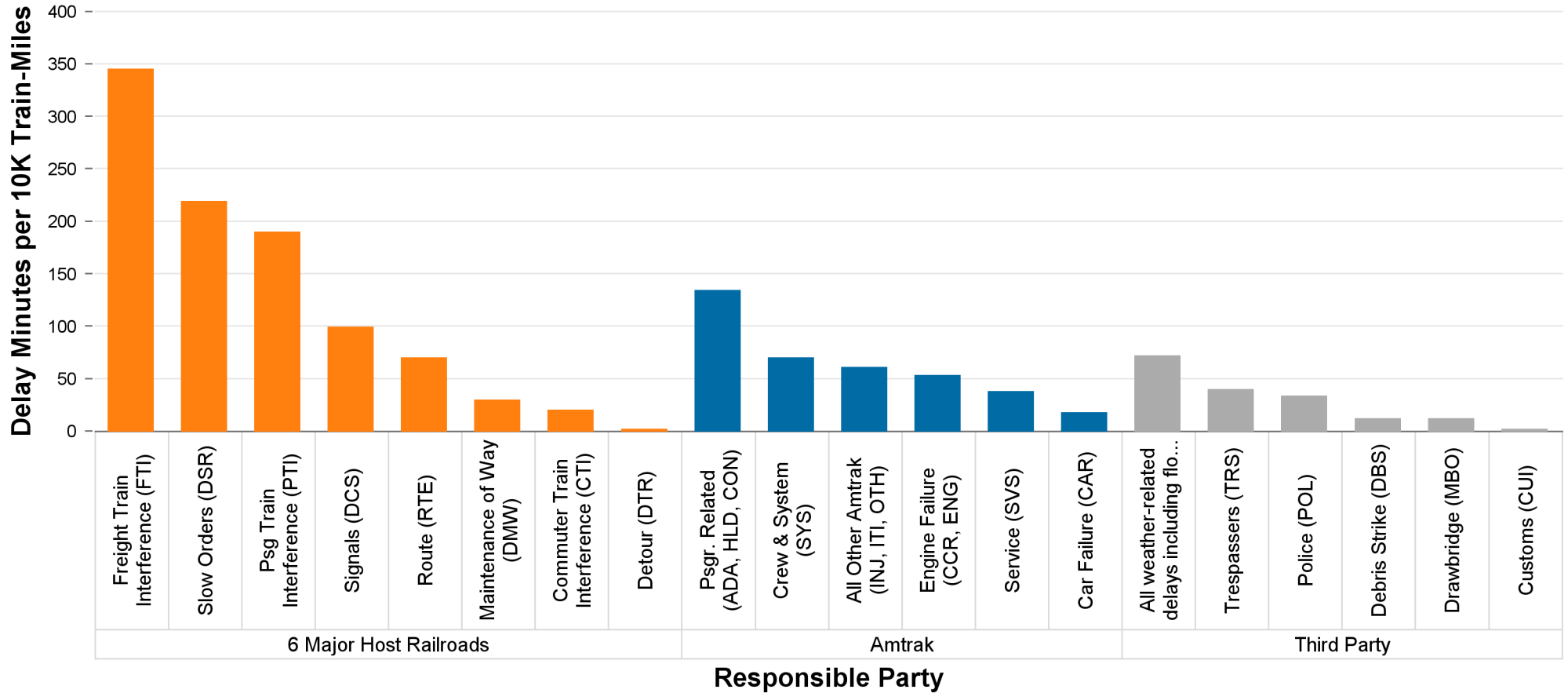
Total host-responsible delay (HRD) minutes per 10,000 train-miles incurred by Amtrak trains on the six major host railroads, with delays attributable to freight train interference (FTI) shaded.



Delays to Amtrak Trains by Responsible Party

1 Year Snapshot

Delay minutes per 10,000 train-miles on the six major host railroads categorized by delay type and responsible party.

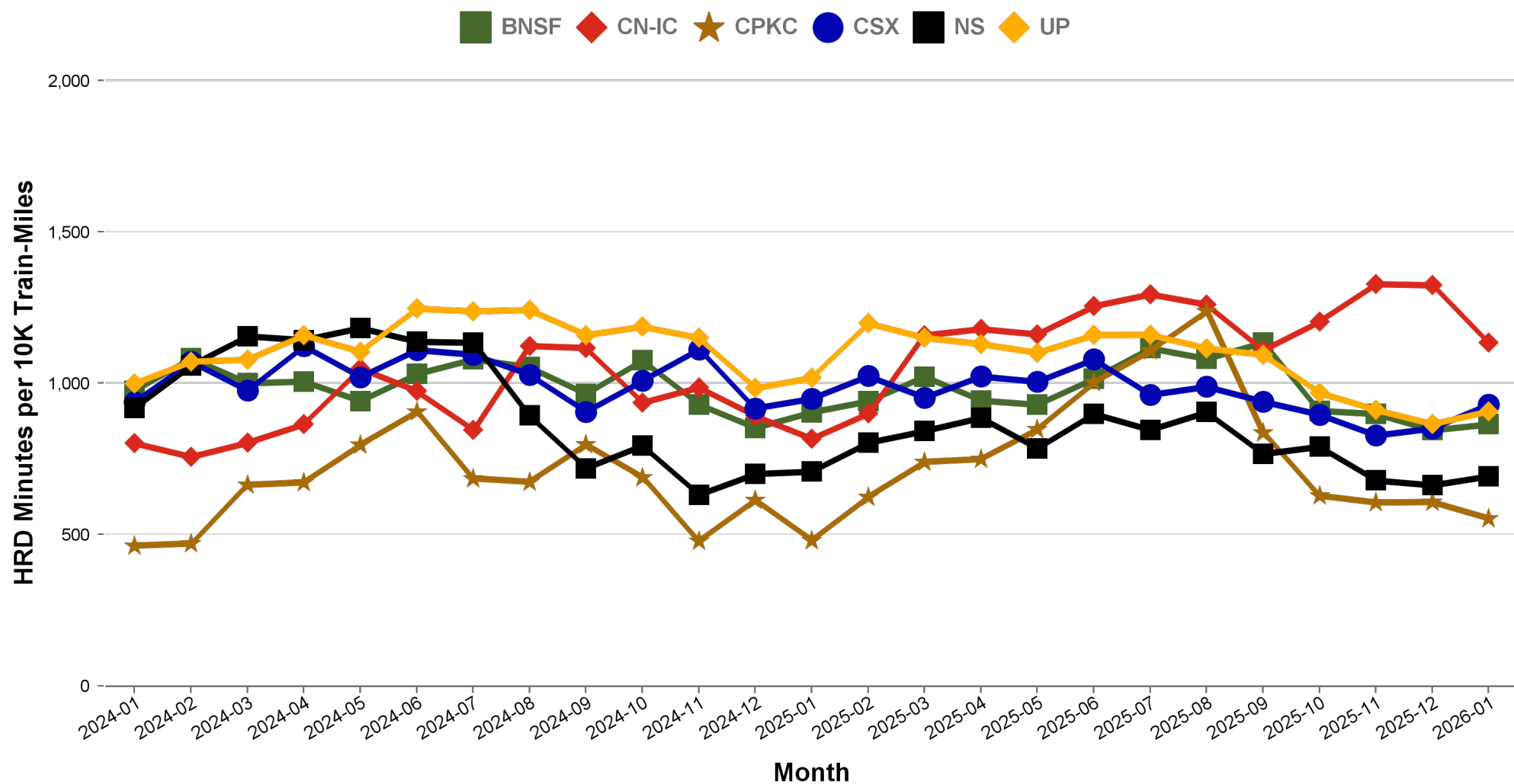


Responsible Party	6 Major Host Railroads	Amtrak	Third Party
Delay Minutes per 10K Train-Miles	977	371	170
Percentage of Total Delays	64.4%	24.4%	11.2%

Total Host-Responsible Delays

2 Year Snapshot

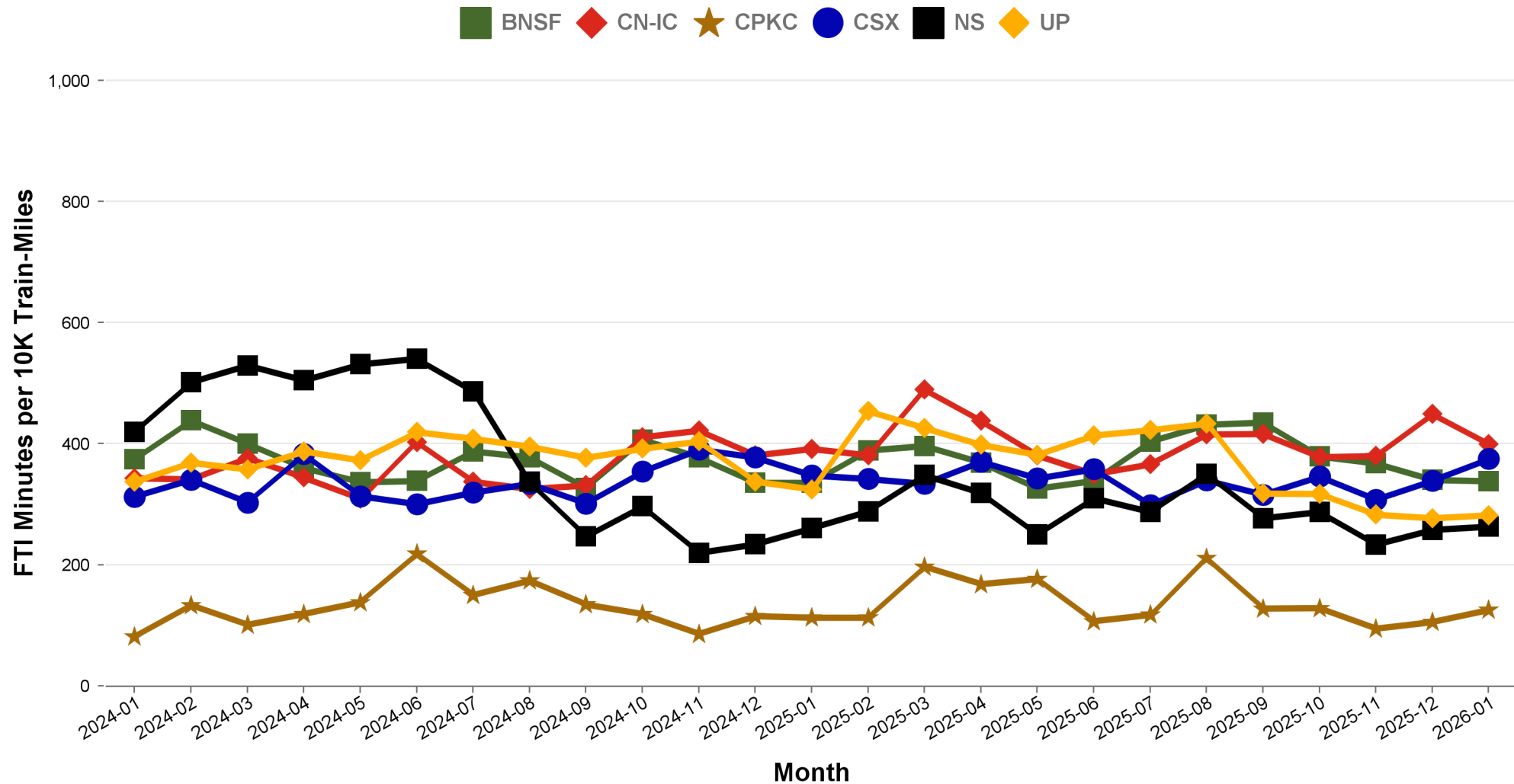
Total host-responsible delay (HRD) minutes per 10,000 train-miles incurred by Amtrak trains on each of the six major host railroads for the most recent two years.



Freight Train Interference Delays

2 Year Snapshot

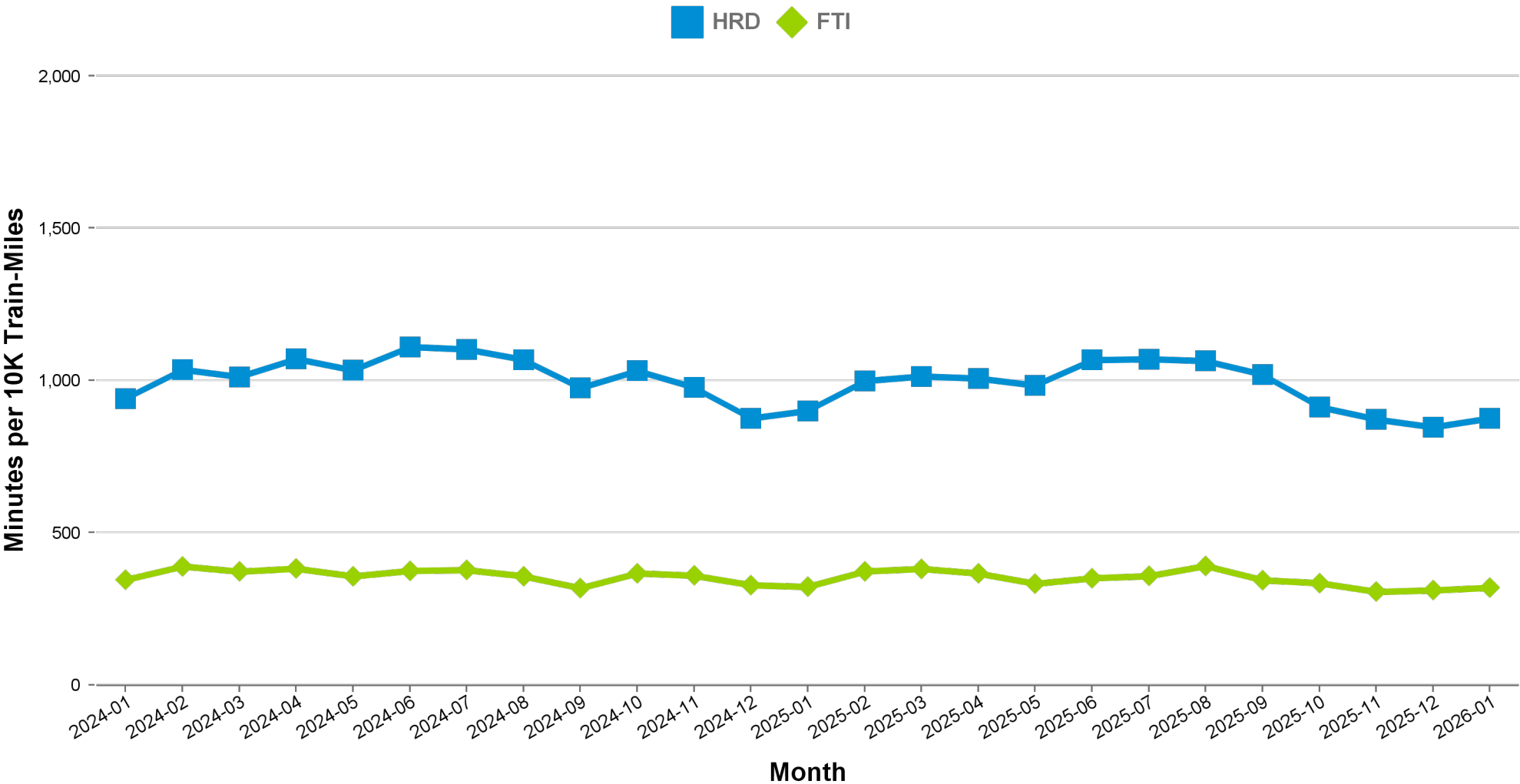
Total delay minutes per 10,000 train-miles attributable to freight train interference (FTI) incurred by Amtrak trains on each of the six major host railroads for the most recent two years.



Aggregated Host Railroad Performance Trend

2 Year Snapshot

Total host-responsible delay (HRD) and freight interference (FTI) minutes per 10,000 train-miles incurred by Amtrak trains, aggregated for the six major host railroads for the most recent two years.



Minutes of Delay per 10K Train Miles by Host for January 2026

Host	Service	Total Host Responsible Delays		Largest Two Delay Categories - Current Month				Route Miles
		Current Month	Most Recent 12 Months	#1		#2		
Target		900	900					
BNSF	California Zephyr	804	811	FTI	337	DMW	90	1027
	Carl Sandburg / Illinois Zephyr	589	763	FTI	292	CTI	93	257
	Cascades	950	1011	FTI	272	PTI	213	317
	Coast Starlight	807	1053	RTE	180	PTI	155	158
	Empire Builder	890	799	FTI	537	DSR	108	2147
	Gold Runner	856	1238	PTI	385	DSR	157	284
	Heartland Flyer	1583	2084	DSR	954	FTI	449	236
	Pacific Surfliner	986	1071	DCS	315	FTI	233	22
	Southwest Chief	784	883	FTI	386	DSR	162	2206
	Sunset Ltd	968	1238	DSR	521	RTE	215	190
	Texas Eagle	1409	1737	DSR	762	DCS	277	116
CN-IC	Blue Water	750	911	DSR	433	FTI	232	159
	City Of New Orleans	1006	1142	DSR	372	FTI	292	930
	Illini / Saluki	898	799	FTI	280	DSR	248	304
	Lincoln / Missouri	2662	2535	FTI	1735	DSR	349	35
	Lincoln Service	1822	2068	FTI	1324	DSR	212	35
	Texas Eagle	1996	2261	FTI	1643	DSR	213	35
	Wolverine	3239	3155	DSR	2622	FTI	463	27
CPKC	Adirondack	591	1155	PTI	434	FTI	90	178
	Borealis	802	903	DMW	251	PTI	163	376
	Empire Builder	520	890	FTI	256	PTI	110	384
	Ethan Allen Express	1294	1780	PTI	1085	RTE	119	60
	Hiawatha	200	185	DCS	118	FTI	34	53
CSX	Auto Train	1045	1157	FTI	396	PTI	234	898
	Cardinal	611	834	FTI	323	DSR	109	703
	Carolinian	1342	1478	FTI	351	PTI	265	295
	Downeaster	662	775	PTI	294	DCS	194	107
	Floridian	1044	969	FTI	334	DSR	281	1413
	Lake Shore Ltd	998	737	FTI	610	RTE	124	741
	Maple Leaf	766	814	FTI	503	PTI	86	298
	Mardi Gras Service	2033	1985	FTI	1175	PTI	529	137
	New York - Niagara Falls	794	688	FTI	454	DCS	150	296
	Palmetto	819	959	FTI	364	PTI	199	659
	Pere Marquette	399	317	FTI	278	DCS	92	135
	Richmond / Newport News / Norfolk	1024	1155	FTI	231	PTI	218	189
	Silver Meteor	647	819	FTI	260	PTI	156	1152
NS	Blue Water	1572	1857	FTI	1033	DCS	158	39
	Cardinal	545	1370	DCS	222	PTI	189	79
	Carolinian	484	639	PTI	307	DCS	93	202
	Crescent	646	881	FTI	218	PTI	152	1141
	Floridian	1030	911	FTI	442	RTE	184	518
	Lake Shore Ltd	983	933	FTI	536	RTE	187	339
	Pennsylvanian	396	619	RTE	189	FTI	148	249
	Pere Marquette	2480	1469	FTI	1226	DCS	846	39
	Piedmont	519	630	PTI	192	FTI	123	173
	Richmond / Newport News / Norfolk	364	444	DSR	139	RTE	88	81
	Roanoke	406	501	PTI	255	FTI	74	216
		Wolverine	1506	1751	FTI	1070	DCS	184
UP	California Zephyr	683	971	FTI	243	DSR	189	1381
	Capitol Corridor	742	594	PTI	328	DSR	130	171
	Cascades	1317	1464	FTI	543	PTI	361	125
	Coast Starlight	1087	1310	DSR	273	PTI	271	1162
	Gold Runner	1223	1144	PTI	372	FTI	330	88
	Lincoln / Missouri	660	963	FTI	244	PTI	241	502
	Lincoln Service	809	972	FTI	297	PTI	267	231
	Missouri	559	1008	FTI	276	PTI	162	271
	Pacific Surfliner	1100	1014	PTI	397	DCS	319	174
	Sunset Ltd	1038	1229	FTI	505	RTE	187	1784
	Texas Eagle	1185	1444	FTI	648	DSR	217	1073

Minutes of Delay per 10K Train Miles by Host for January 2026

Host	Service	Total Host Responsible Delays		Largest Two Delay Categories - Current Month				Route Miles
		Current Month	Most Recent 12 Months	#1		#2		
Target		900	900					
Amtrak	Adirondack	258	496	PTI	196	DCS	21	100
	Blue Water	204	290	RTE	116	CTI	31	99
	Ethan Allen Express	324	482	DCS	85	CTI	75	100
	Maple Leaf	403	697	RTE	175	CTI	76	109
	New York - Albany	287	463	PTI	107	CTI	64	81
	New York - Niagara Falls	279	458	PTI	132	CTI	45	109
	Wolverine	371	448	PTI	251	DCS	59	99
BBrRR	Cardinal	1049	1628	PTI	477	FTI	431	132
CN-Canada	Adirondack	3042	3218	RTE	972	DSR	963	49
Fla DOT	Floridian	1533	1064	CTI	871	FTI	340	70
	Silver Meteor	1132	1037	CTI	804	DCS	109	70
FR	Auto Train	4559	4316	CTI	3628	DSR	613	16
	Floridian	2330	2526	CTI	1261	DSR	734	61
	Silver Meteor	1451	2426	DSR	641	CTI	470	61
MADOT	Springfield Shuttles	629	322	DCS	245	FTI	227	36
	Vermonter	97	337	DCS	65	FTI	32	50
MBTA	Downeaster	955	814	DCS	669	CTI	162	38
Metra	Borealis	1383	1519	CTI	1031	DMW	141	33
	Empire Builder	2740	2687	CTI	2052	PTI	408	29
	Hiawatha	1854	2131	CTI	1168	DCS	193	29
MIDOT	Blue Water	647	363	PTI	472	DCS	175	22
	Wolverine	655	681	PTI	564	RTE	44	134
MNRR	Acela	1578	1506	DSR	1086	CTI	251	56
	Adirondack	1413	1216	CTI	1220	RTE	122	64
	Ethan Allen Express	1556	1496	CTI	1080	RTE	259	64
	Lake Shore Ltd	942	1081	CTI	623	RTE	143	64
	Maple Leaf	977	934	CTI	785	RTE	167	64
	New York - Albany	845	1000	CTI	625	RTE	94	64
	New York - Niagara Falls	918	1197	CTI	613	PTI	137	64
	Richmond / Newport News / Norfolk	1440	1542	DSR	902	CTI	391	56
	Vermonter	2293	2181	DSR	1385	CTI	570	56
NECR	Vermonter	427	721	DSR	357	DCS	70	192
NMDOT	Southwest Chief	1686	2067	CTI	1221	PTI	248	80
SCRRA	Coast Starlight	1405	1504	PTI	986	CTI	242	48
	Pacific Surfliner	957	923	PTI	348	CTI	289	95
SDNRR	Pacific Surfliner	1602	1103	CTI	569	PTI	477	60
Sounder	Cascades	888	1002	PTI	507	CTI	259	20
	Coast Starlight	2226	2507	PTI	1694	CTI	435	20
TRE	Texas Eagle	403	1039	CTI	234	FTI	88	33
VTR	Ethan Allen Express	61	1067	DSR	22	DCS	20	91

The numbers included in this document are preliminary and are for informational purposes only.

Excludes hosts with fewer than 15 route miles.

Delays on the Amtrak-owned portion of the Northeast Corridor are shown in a separate report, with tighter delay standards.

Northeast Regional: Roanoke includes all trains between Roanoke and points on the NEC; Richmond / Newport News / Norfolk includes all trains between these locations and points on the NEC.

Minutes of Delay per 10K Train Miles by Service for January 2026

Service		Host	Total Host Responsible Delays		Largest Two Delay Categories - Current Month				Route Miles
			Current	Most	#1	#2			
Target			900	900					
Acela									
Acela		MNRR	1578	1506	DSR	1086	CTI	251	56
All Other NEC Corridor Routes									
Northeast Regional	Richmond / Newport News / Norfolk	CSX	1024	1155	FTI	231	PTI	218	189
		NS	364	444	DSR	139	RTE	88	81
		MNRR	1440	1542	DSR	902	CTI	391	56
		NS	406	501	PTI	255	FTI	74	216
	Roanoke								
	Springfield Shuttles	MADOT	629	322	DCS	245	FTI	227	36

Minutes of Delay per 10K Train Miles by Service for January 2026

Service	Host	Total Host Responsible Delays		Largest Two Delay Categories - Current Month				Route Miles	
		Current	Most	#1	#2				
Target		900	900						
Non-NEC Corridor Routes									
Borealis	CPKC	802	903	DMW	251	PTI	163	376	
	Metra	1383	1519	CTI	1031	DMW	141	33	
Capitol Corridor	UP	742	594	PTI	328	DSR	130	171	
Carolinian	CSX	1342	1478	FTI	351	PTI	265	295	
	NS	484	639	PTI	307	DCS	93	202	
Cascades	BNSF	950	1011	FTI	272	PTI	213	317	
	UP	1317	1464	FTI	543	PTI	361	125	
	Sounder	888	1002	PTI	507	CTI	259	20	
Downeaster	CSX	662	775	PTI	294	DCS	194	107	
	MBTA	955	814	DCS	669	CTI	162	38	
Empire	Adirondack	CPKC	591	1155	PTI	434	FTI	90	178
		Amtrak	258	496	PTI	196	DCS	21	100
		CN-Canada	3042	3218	RTE	972	DSR	963	49
		MNRR	1413	1216	CTI	1220	RTE	122	64
	Ethan Allen Express	CPKC	1294	1780	PTI	1085	RTE	119	60
		Amtrak	324	482	DCS	85	CTI	75	100
		MNRR	1556	1496	CTI	1080	RTE	259	64
		VTR	61	1067	DSR	22	DCS	20	91
	Maple Leaf	CSX	766	814	FTI	503	PTI	86	298
		Amtrak	403	697	RTE	175	CTI	76	109
		MNRR	977	934	CTI	785	RTE	167	64
	New York - Albany	Amtrak	287	463	PTI	107	CTI	64	81
		MNRR	845	1000	CTI	625	RTE	94	64
	New York - Niagara Falls	CSX	794	688	FTI	454	DCS	150	296
		Amtrak	279	458	PTI	132	CTI	45	109
		MNRR	918	1197	CTI	613	PTI	137	64
Gold Runner	BNSF	856	1238	PTI	385	DSR	157	284	
	UP	1223	1144	PTI	372	FTI	330	88	
Heartland Flyer	BNSF	1583	2084	DSR	954	FTI	449	236	
Hiawatha	CPKC	200	185	DCS	118	FTI	34	53	
	Metra	1854	2131	CTI	1168	DCS	193	29	
Illinois	Carl Sandburg / Illinois Zephyr	BNSF	589	763	FTI	292	CTI	93	257
	Illini / Saluki	CN-IC	898	799	FTI	280	DSR	248	304
	Lincoln Service	CN-IC	1822	2068	FTI	1324	DSR	212	35
		UP	809	972	FTI	297	PTI	267	231
Lincoln / Missouri	CN-IC	2662	2535	FTI	1735	DSR	349	35	
	UP	660	963	FTI	244	PTI	241	502	
Mardi Gras Service	CSX	2033	1985	FTI	1175	PTI	529	137	
Michigan	Blue Water	CN-IC	750	911	DSR	433	FTI	232	159
		NS	1572	1857	FTI	1033	DCS	158	39
		Amtrak	204	290	RTE	116	CTI	31	99
		MIDOT	647	363	PTI	472	DCS	175	22
	Pere Marquette	CSX	399	317	FTI	278	DCS	92	135
		NS	2480	1469	FTI	1226	DCS	846	39
	Wolverine	CN-IC	3239	3155	DSR	2622	FTI	463	27
		NS	1506	1751	FTI	1070	DCS	184	39
		Amtrak	371	448	PTI	251	DCS	59	99
		MIDOT	655	681	PTI	564	RTE	44	134
Missouri	UP	559	1008	FTI	276	PTI	162	271	
Pacific Surfliner	BNSF	986	1071	DCS	315	FTI	233	22	
	UP	1100	1014	PTI	397	DCS	319	174	
	SCRRA	957	923	PTI	348	CTI	289	95	
	SDNRR	1602	1103	CTI	569	PTI	477	60	
Pennsylvanian	NS	396	619	RTE	189	FTI	148	249	
Piedmont	NS	519	630	PTI	192	FTI	123	173	
Vermont	MADOT	97	337	DCS	65	FTI	32	50	
	MNRR	2293	2181	DSR	1385	CTI	570	56	
	NECR	427	721	DSR	357	DCS	70	192	

Minutes of Delay per 10K Train Miles by Service for January 2026

Service	Host	Total Host Responsible Delays		Largest Two Delay Categories - Current Month				Route Miles
		Current	Most	#1	#2			
Target		900	900					
Long-Distance Routes								
Auto Train	CSX	1045	1157	FTI	396	PTI	234	898
	FR	4559	4316	CTI	3628	DSR	613	16
California Zephyr	BNSF	804	811	FTI	337	DMW	90	1027
	UP	683	971	FTI	243	DSR	189	1381
Cardinal	CSX	611	834	FTI	323	DSR	109	703
	NS	545	1370	DCS	222	PTI	189	79
	BBrRR	1049	1628	PTI	477	FTI	431	132
City Of New Orleans	CN-IC	1006	1142	DSR	372	FTI	292	930
Coast Starlight	BNSF	807	1053	RTE	180	PTI	155	158
	UP	1087	1310	DSR	273	PTI	271	1162
	SCRRA	1405	1504	PTI	986	CTI	242	48
	Sounder	2226	2507	PTI	1694	CTI	435	20
Crescent	NS	646	881	FTI	218	PTI	152	1141
Empire Builder	BNSF	890	799	FTI	537	DSR	108	2147
	CPKC	520	890	FTI	256	PTI	110	384
	Metra	2740	2687	CTI	2052	PTI	408	29
Floridian	CSX	1044	969	FTI	334	DSR	281	1413
	NS	1030	911	FTI	442	RTE	184	518
	Fla DOT	1533	1064	CTI	871	FTI	340	70
	FR	2330	2526	CTI	1261	DSR	734	61
Lake Shore Ltd	CSX	998	737	FTI	610	RTE	124	741
	NS	983	933	FTI	536	RTE	187	339
	MNRR	942	1081	CTI	623	RTE	143	64
Palmetto	CSX	819	959	FTI	364	PTI	199	659
Silver Meteor	CSX	647	819	FTI	260	PTI	156	1152
	Fla DOT	1132	1037	CTI	804	DCS	109	70
	FR	1451	2426	DSR	641	CTI	470	61
Southwest Chief	BNSF	784	883	FTI	386	DSR	162	2206
	NMDOT	1686	2067	CTI	1221	PTI	248	80
Sunset Ltd	BNSF	968	1238	DSR	521	RTE	215	190
	UP	1038	1229	FTI	505	RTE	187	1784
Texas Eagle	BNSF	1409	1737	DSR	762	DCS	277	116
	CN-IC	1996	2261	FTI	1643	DSR	213	35
	UP	1185	1444	FTI	648	DSR	217	1073
	TRE	403	1039	CTI	234	FTI	88	33

The numbers included in this document are preliminary and are for informational purposes only.

Excludes hosts with fewer than 15 route miles.

Delays on the Amtrak-owned portion of the Northeast Corridor are shown in a separate report, with tighter delay standards.

Northeast Regional: Roanoke includes all trains between Roanoke and points on the NEC; Richmond / Newport News /

Norfolk includes all trains between these locations and points on the NEC.

Service	All-Stations OTP		Customer OTP		Avg Mins Late per Late Rider**	
	Current Month	Most Recent 12 Months	Current Month	Most Recent 12 Months	Current Month	Most Recent 12 Months
Amtrak System	73.8%	75.5%	75.2%	75.3%	55	56
NEC Corridor Routes	74.8%	81.6%	74.2%	79.1%	47	44
Minimum Standard			80.0%	80.0%		
Acela*	63.7%	80.9%	61.6%	79.3%	51	45
Keystone	85.4%	91.5%	85.0%	89.3%	41	34
Northeast Regional	73.6%	78.3%	74.6%	76.7%	47	45
On Spine Northeast Regional	72.7%	81.4%	75.4%	80.0%	48	45
Richmond / Newport News / Norfolk	70.9%	73.4%	71.2%	70.2%	47	44
Roanoke	78.3%	79.7%	80.8%	76.4%	35	49
Springfield Shuttles	81.1%	79.6%	84.6%	85.7%	43	38
Non-NEC Corridor Routes	79.8%	80.1%	79.1%	76.5%	50	45
Minimum Standard			80.0%	80.0%		
Borealis	70.9%	69.5%	76.1%	60.4%	74	46
Capitol Corridor	87.9%	91.2%	89.4%	89.5%	41	37
Carolinian	71.3%	66.9%	74.4%	65.9%	38	51
Cascades	85.5%	75.4%	81.2%	71.4%	45	42
Downeaster	86.4%	85.2%	84.9%	82.2%	66	36
Empire	71.7%	76.6%	75.2%	74.9%	57	44
Adirondack	65.8%	69.2%	61.7%	58.2%	58	47
Berkshire Flyer	-	51.9%	-	49.9%	-	65
Ethan Allen Express	74.0%	70.4%	74.5%	64.0%	46	39
Maple Leaf	50.6%	62.0%	43.9%	59.0%	59	54
New York - Albany	77.9%	86.4%	85.0%	82.7%	54	38
New York - Niagara Falls	76.2%	80.2%	73.7%	77.7%	63	46
Gold Runner	74.2%	68.3%	68.3%	62.3%	50	47
Heartland Flyer	66.6%	61.1%	74.5%	48.9%	47	48
Hiawatha	88.8%	88.7%	86.7%	85.7%	42	37
Illinois	76.3%	77.9%	78.3%	74.1%	42	43
Carl Sandburg / Illinois Zephyr	75.8%	80.9%	78.0%	79.1%	35	41
Illini / Saluki	82.4%	81.7%	77.4%	79.6%	43	44
Lincoln Service	71.6%	72.8%	79.2%	68.6%	45	44
Lincoln / Missouri	65.4%	53.5%	67.0%	49.0%	39	53
Mardi Gras Service	93.3%	92.9%	87.1%	87.5%	50	42
Michigan	56.5%	70.9%	61.2%	68.6%	71	52
Blue Water	54.9%	74.2%	52.4%	67.4%	58	53
Pere Marquette	60.3%	86.7%	64.8%	83.9%	64	54
Wolverine	56.5%	67.7%	63.5%	65.6%	78	52
Missouri	87.9%	73.6%	90.5%	68.8%	27	52
Pacific Surfliner	85.4%	87.4%	81.0%	85.9%	46	44
Pennsylvanian	82.9%	80.4%	89.2%	81.5%	34	46
Piedmont	83.8%	82.2%	85.2%	76.2%	46	37
Vermonteer	70.5%	73.8%	74.8%	72.7%	45	44
Long-Distance Routes	56.4%	52.1%	67.4%	56.0%	93	96
Minimum Standard			80.0%	80.0%		
Auto Train	78.2%	72.0%	75.4%	57.4%	107	95
California Zephyr	65.9%	52.3%	71.3%	54.5%	91	119
Cardinal	47.5%	52.6%	58.6%	53.0%	101	78
City Of New Orleans	56.4%	53.3%	81.2%	68.6%	44	76
Coast Starlight	67.6%	61.4%	72.9%	66.2%	88	85
Crescent	75.0%	70.7%	84.8%	74.8%	40	69
Empire Builder	39.2%	49.6%	51.5%	52.6%	131	122
Floridian	35.6%	31.3%	44.2%	31.8%	105	104
Lake Shore Ltd	55.6%	66.3%	59.3%	71.9%	98	67
Palmetto	78.6%	69.0%	88.5%	70.1%	46	51
Silver Meteor	71.4%	57.0%	76.3%	55.0%	57	74
Southwest Chief	48.2%	33.3%	52.6%	33.9%	89	122
Sunset Ltd	55.2%	53.5%	67.2%	62.8%	71	99
Texas Eagle	52.7%	45.4%	70.3%	51.0%	84	93

The numbers included in this document are preliminary and are for informational purposes only.

Northeast Regional: Roanoke includes all trains between Roanoke and points on the NEC; Richmond/Newport News/Norfolk includes all trains between these locations and points on the NEC.

* Acela on-time performance target is 90.0%

** Excludes on-time Customers

Host Railroad Responsible Delays

Code	Code Description	Explanation
CTI	Commuter Train Interference	Delays for meeting or following commuter trains
DCS	Signal Delays	Signal failure or All Other signal delays, wayside defect-detector false-alarms, defective road crossing protection, efficiency tests, drawbridge stuck open
DMW	Maintenance of Way	Maintenance of Way delays including holds for track repairs or MW foreman to clear
DSR	Slow Order Delays	Temporary slow orders, except heat or cold orders
DTR	Detour	Delays from detours
FTI	Freight Train Interference	Delays from freight trains
PTI	Passenger Train Interference	Delays for meeting or following All Other passenger trains
RTE	Routing	Routing-dispatching delays including diversions, late track bulletins, etc.

Amtrak Responsible Delays

Code	Code Description	Explanation
ADA	Passenger Related	All delays related to disabled passengers, wheel chair lifts, guide dogs, etc.
CAR	Car Failure	Mechanical failure on all types of cars
CCR	Cab Car Failure	Mechanical failure on Cab Cars
CON	Hold for Connection	Holding for connections from All Other trains or buses.
ENG	Locomotive Failure	Mechanical failure on engines.
HLD	Passenger Related	All delays related to passengers, checked-baggage, large groups, etc.
INJ	Injury Delay	Delay due to injured passengers or employees.
ITI	Initial Terminal Delay	Delay at initial terminal due to late arriving inbound trains causing late release of equipment.
OTH	Miscellaneous Delays	Lost-on-run, heavy trains, unable to make normal speed, etc.
SVS	Servicing	All switching and servicing delays
SYS	Crew & System	Delays related to crews including lateness, lone-engineer delays

Third-Party Delays

Code	Code Description	Explanation
CUI	Customs	U.S. and Canadian customs delays; Immigration-related delays
DBS	Debris	Debris strikes
MBO	Drawbridge Openings	Movable bridge openings for marine traffic where no bridge failure is involved
NOD	Unused Recovery Time	Wait for departure time
POL	Police-Related	Police/fire department holds on right-of-way or on-board trains
TRS	Trespassers	Trespasser incidents including road crossing accidents, trespasser / animal strikes, vehicle stuck on track ahead, bridge strikes
WTR	Weather-Related	All weather-related delays including floods/washouts, earthquake-related delays, heat or cold orders, slippery rail due to leaves

*These delay codes are applicable to Off-NEC routes only.