



Host Railroad Report

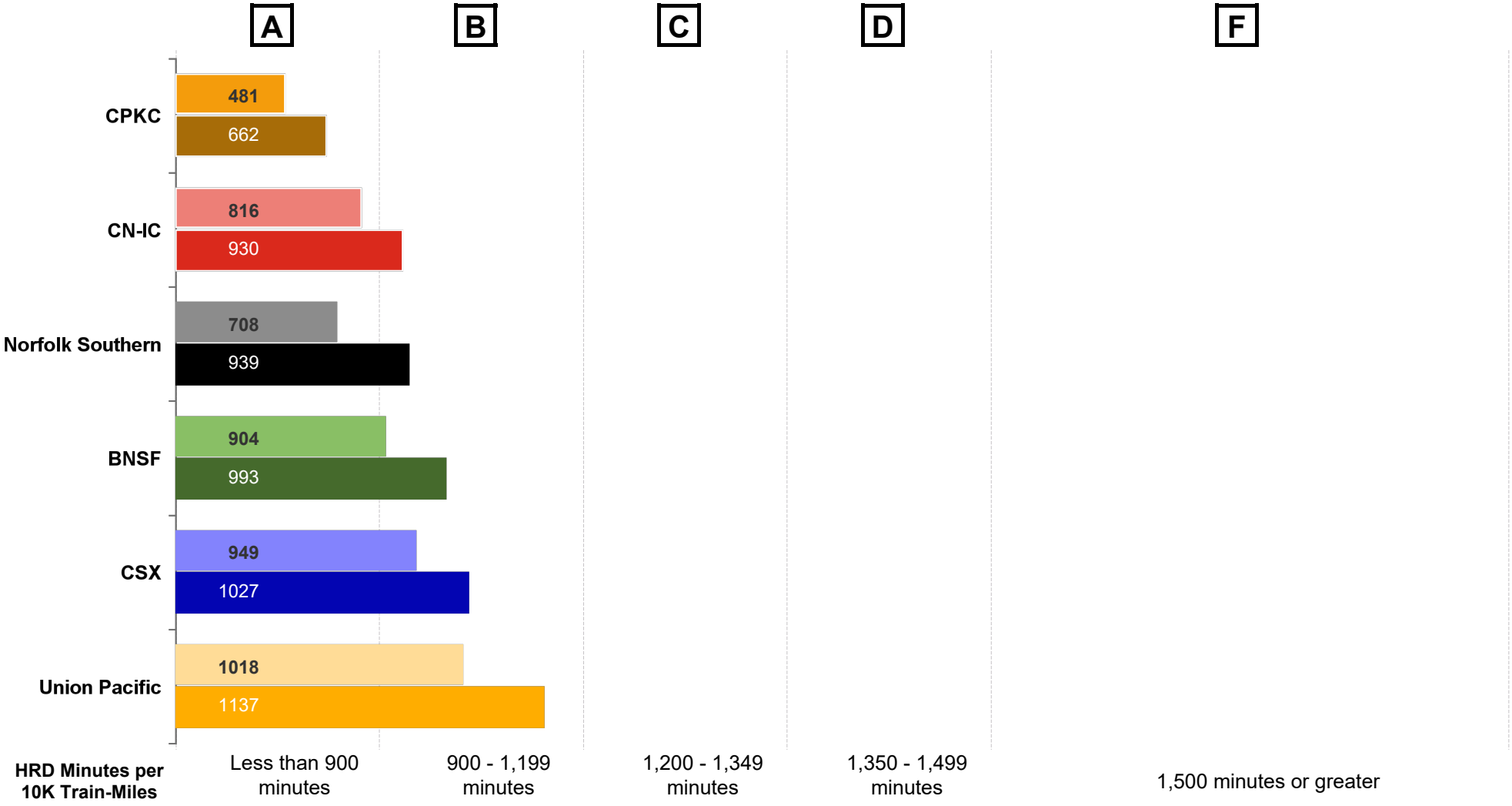
Amtrak Train Performance on Host Railroads

Data through January 2025

Host Railroad Report Card Update

Current Month and 1 Year Snapshot

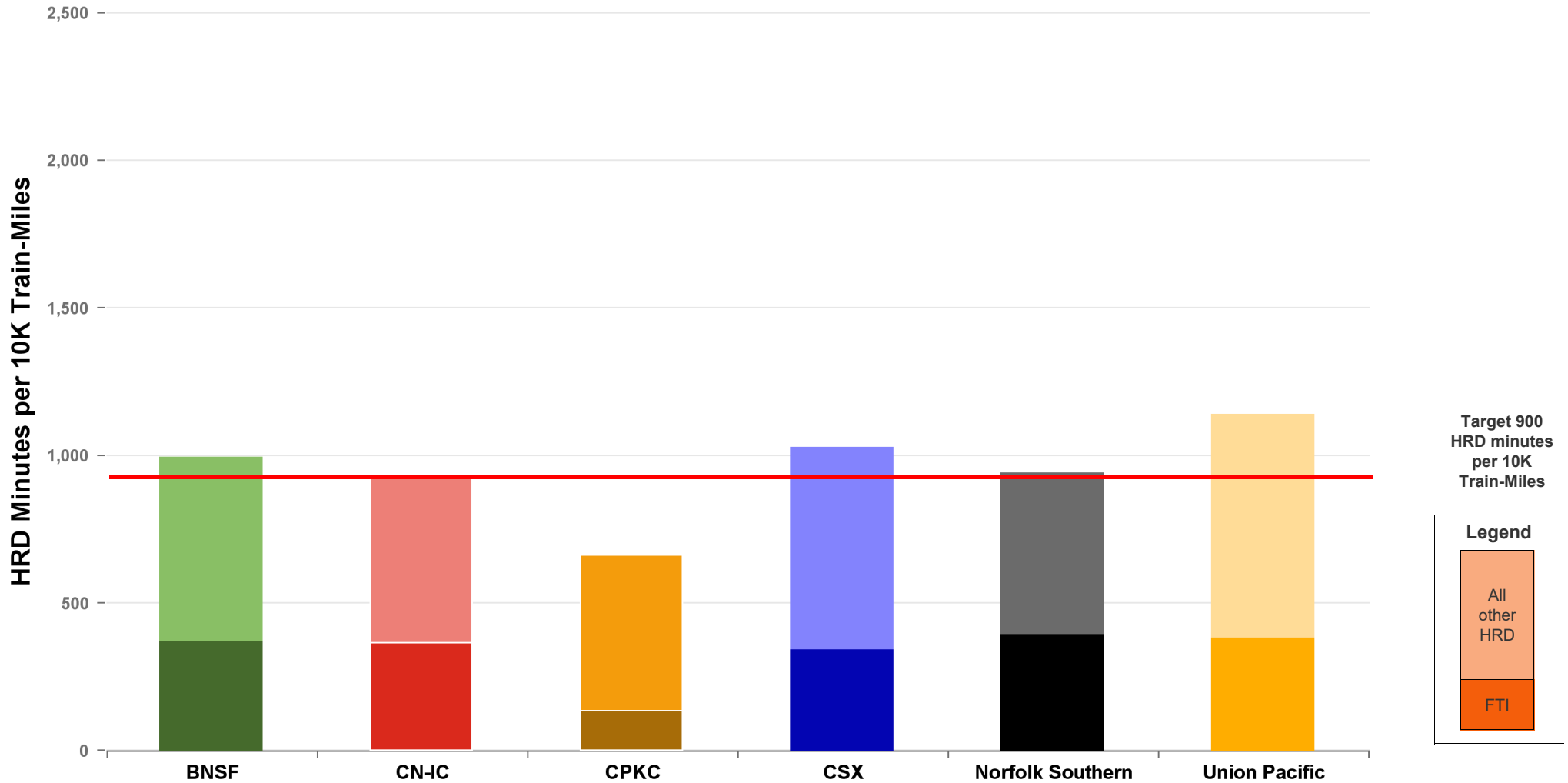
A monthly update of the Host Railroad Report Card, which grades the six major host railroads based on host responsible delay (HRD) minutes per 10,000 train-miles for the current month (lighter shade) and the most recent 12 months.



Total Host-Responsible Delays

1 Year Snapshot

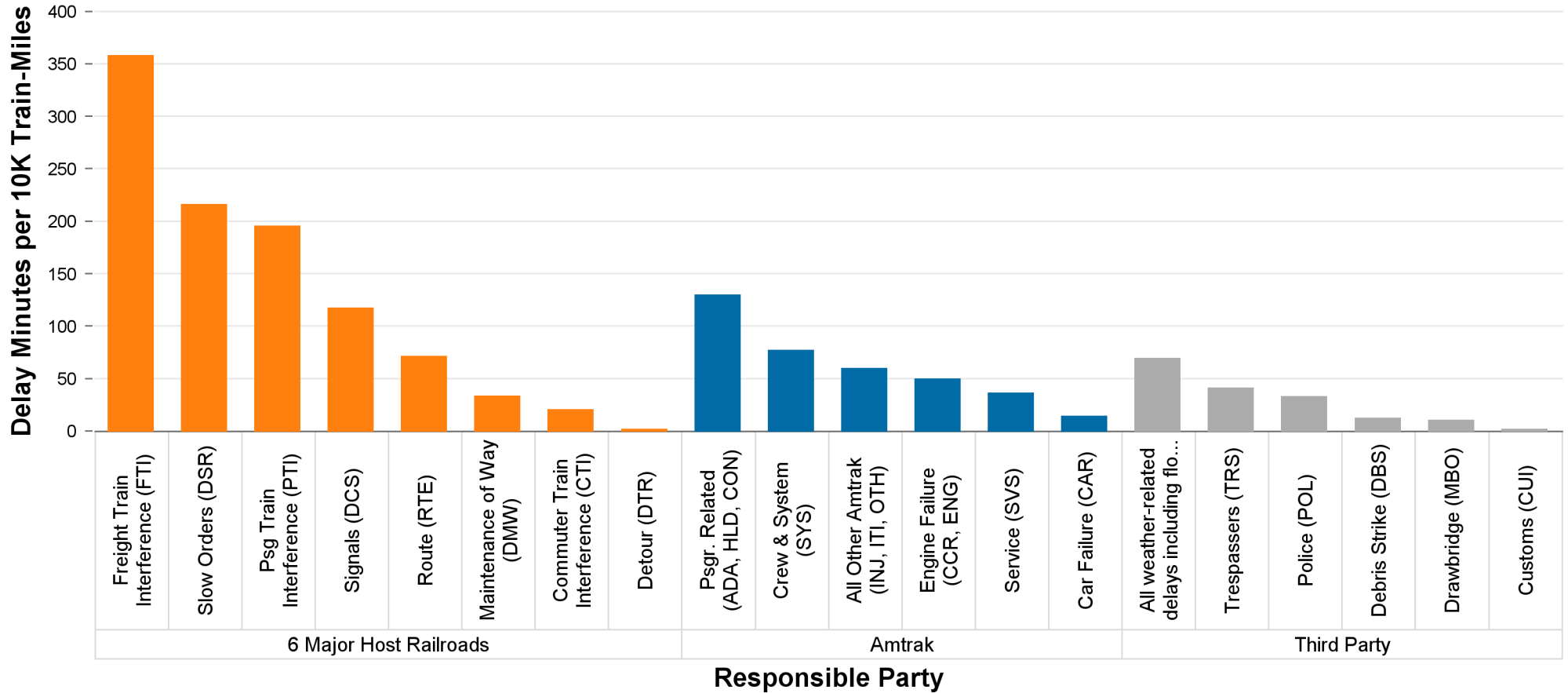
Total host-responsible delay (HRD) minutes per 10,000 train-miles incurred by Amtrak trains on the six major host railroads, with delays attributable to freight train interference (FTI) shaded.



Delays to Amtrak Trains by Responsible Party

1 Year Snapshot

Delay minutes per 10,000 train-miles on the six major host railroads categorized by delay type and responsible party.

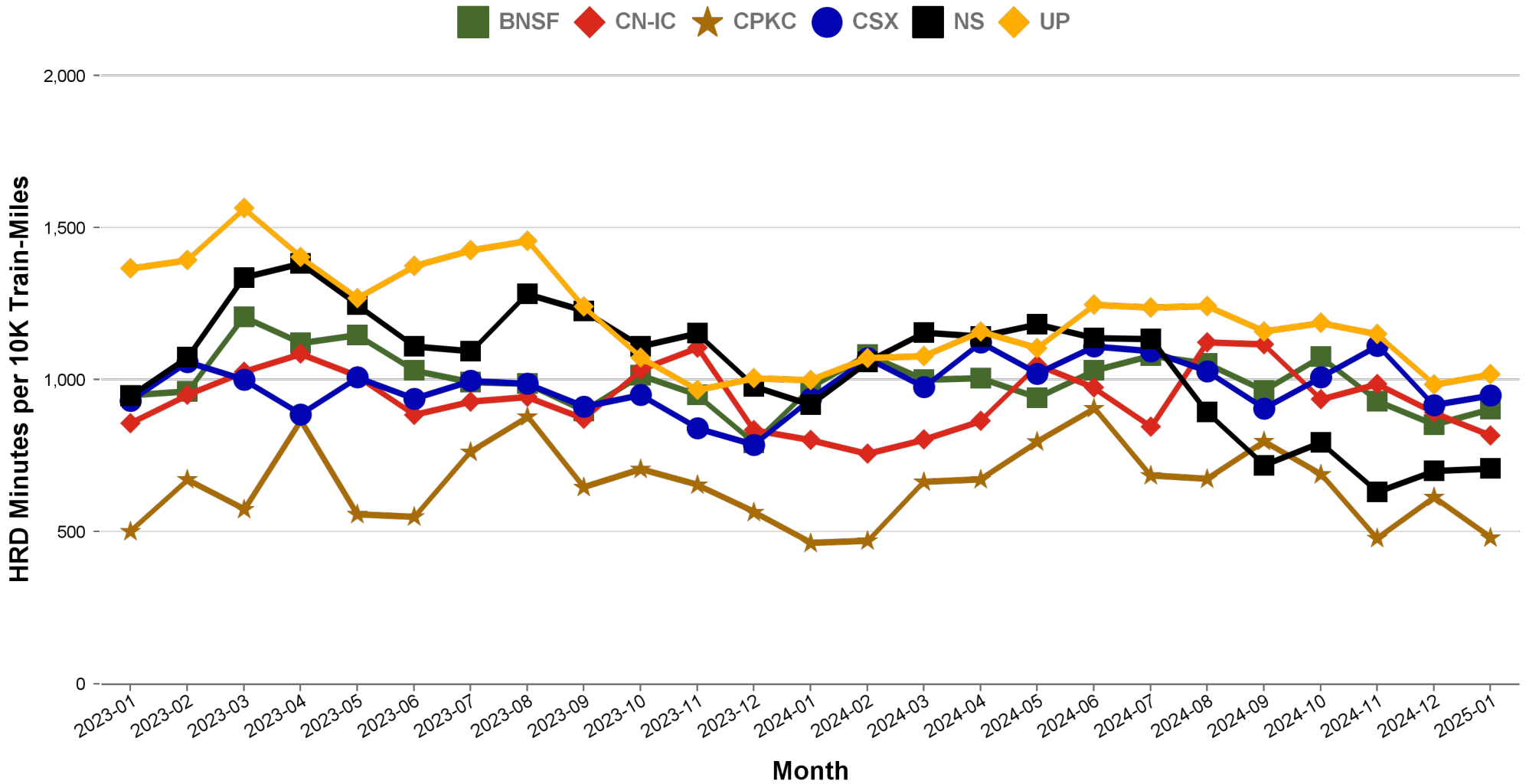


Responsible Party	6 Major Host Railroads	Amtrak	Third Party
Delay Minutes per 10K Train-Miles	1016	365	166
Percentage of Total Delays	65.7%	23.6%	10.7%

Total Host-Responsible Delays

2 Year Snapshot

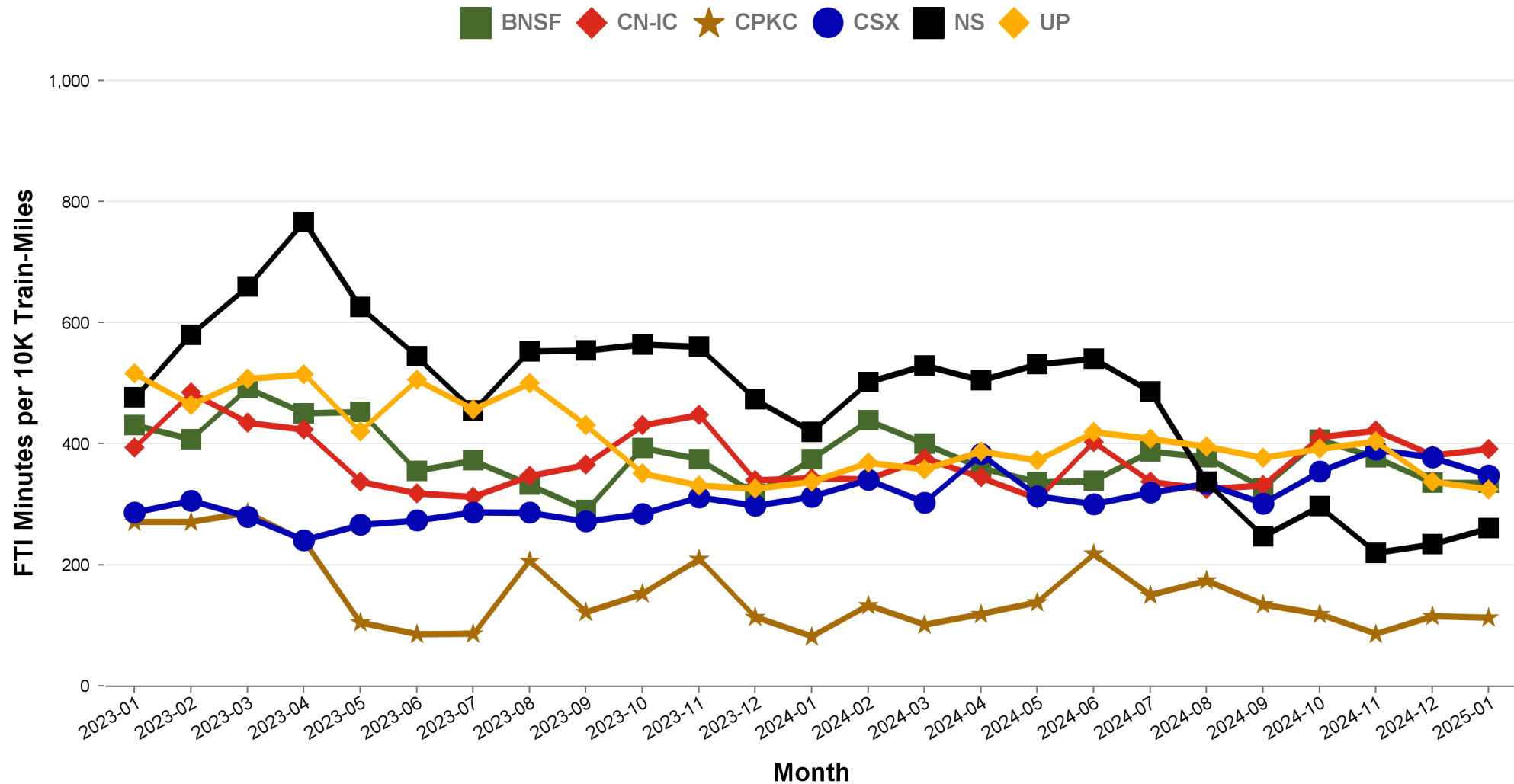
Total host-responsible delay (HRD) minutes per 10,000 train-miles incurred by Amtrak trains on each of the six major host railroads for the most recent two years.



Freight Train Interference Delays

2 Year Snapshot

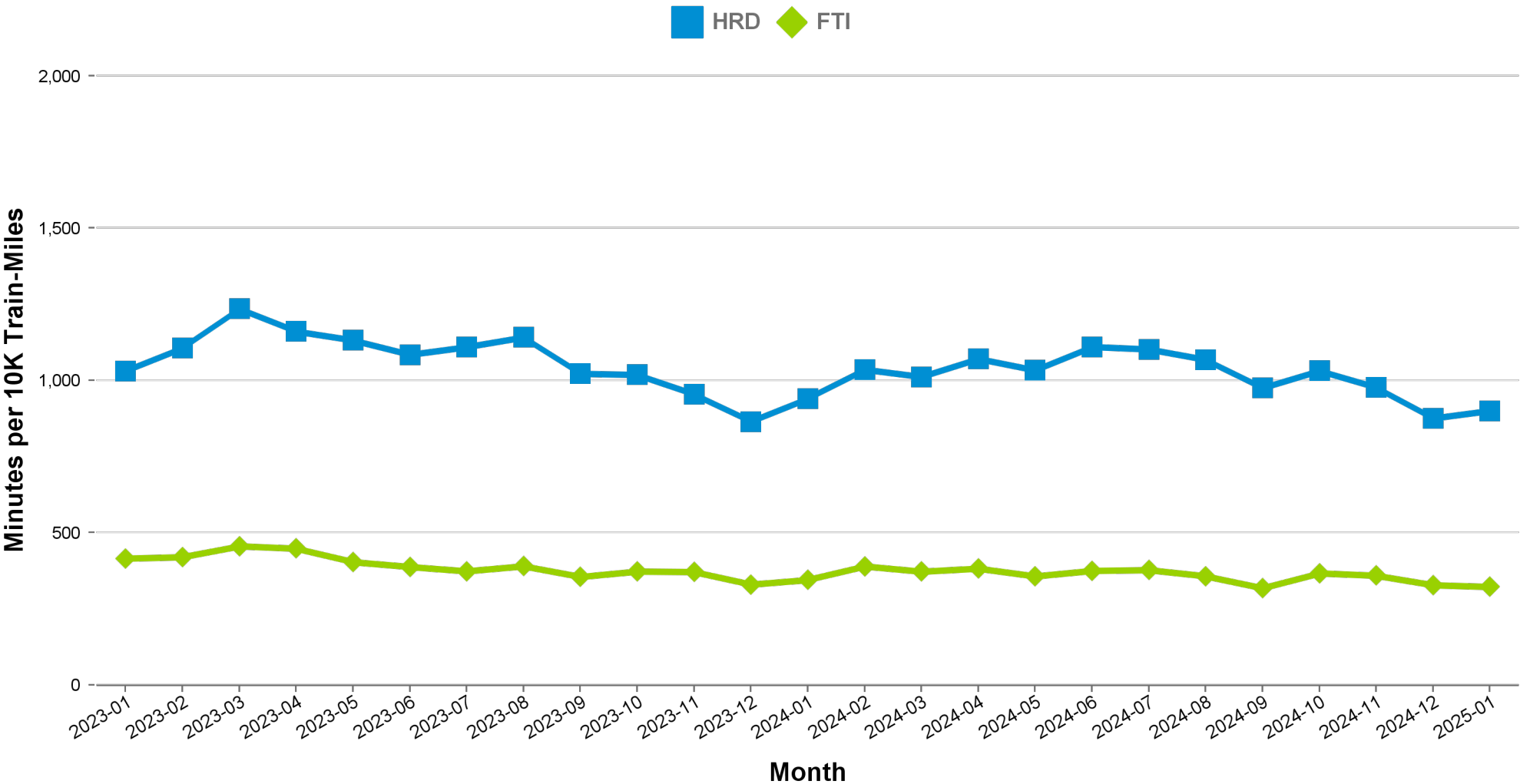
Total delay minutes per 10,000 train-miles attributable to freight train interference (FTI) incurred by Amtrak trains on each of the six major host railroads for the most recent two years.



Aggregated Host Railroad Performance Trend

2 Year Snapshot

Total host-responsible delay (HRD) and freight interference (FTI) minutes per 10,000 train-miles incurred by Amtrak trains, aggregated for the six major host railroads for the most recent two years.



Minutes of Delay per 10K Train Miles by Host for January 2025

Host	Service	Total Host Responsible Delays		Largest Two Delay Categories - Current Month				Route Miles
		Current Month	Most Recent 12 Months	#1		#2		
Target		900	900					
BNSF	California Zephyr	685	737	FTI	219	DSR	142	1027
	Carl Sandburg / Illinois Zephyr	619	800	FTI	229	DSR	195	257
	Cascades	1208	1341	FTI	385	DSR	308	317
	Coast Starlight	1094	1299	FTI	330	RTE	287	158
	Empire Builder	798	792	FTI	526	DSR	86	2147
	Heartland Flyer	1409	1562	DSR	965	FTI	299	236
	Pacific Surfliner	664	1675	FTI	181	DCS	181	22
	San Joaquins	961	1089	PTI	367	FTI	242	284
	Southwest Chief	833	863	FTI	285	DSR	252	2206
	Sunset Ltd	765	1036	DSR	349	FTI	168	190
	Texas Eagle	2435	2400	DSR	1617	FTI	656	116
CN-IC	Blue Water	636	555	FTI	300	DSR	277	159
	City Of New Orleans	655	821	FTI	294	PTI	129	930
	Illini / Saluki	488	658	FTI	241	PTI	118	304
	Lincoln Service	1876	2155	FTI	1205	DSR	281	35
	Lincoln / Missouri	3154	2733	FTI	2173	DSR	387	35
	Texas Eagle	2983	2069	FTI	2177	DCS	311	35
	Wolverine	2162	2023	DSR	1542	DCS	282	27
CPKC	Adirondack	646	997	PTI	389	DCS	102	178
	Borealis	606	813	FTI	166	PTI	145	376
	Empire Builder	464	665	FTI	160	PTI	124	384
	Ethan Allen Express	1131	1469	PTI	672	DMW	193	60
	Hiawatha	132	252	PTI	43	FTI	32	53
CSX	Auto Train	1349	1374	FTI	530	DSR	279	898
	Capitol Ltd	-	723		-		-	307
	Cardinal	1070	811	FTI	642	DSR	135	703
	Carolinian	1694	1753	PTI	509	FTI	470	295
	Downeaster	654	721	PTI	255	DCS	203	107
	Floridian	1105	1056	FTI	350	PTI	253	1413
	Lake Shore Ltd	584	721	FTI	263	RTE	123	741
	Maple Leaf	481	843	FTI	291	PTI	52	298
	New York - Niagara Falls	479	769	FTI	322	DSR	57	296
	Palmetto	1022	1063	FTI	388	PTI	308	659
	Pere Marquette	274	239	FTI	133	DCS	115	135
	Richmond / Newport News / Norfolk	1151	1407	FTI	333	PTI	287	189
	Silver Meteor	813	929	FTI	319	PTI	210	1152
	Silver Star	-	1039		-		-	1209
NS	Blue Water	1489	1749	FTI	750	DCS	294	39
	Capitol Ltd	-	1040		-		-	481
	Cardinal	940	1365	PTI	534	FTI	180	79
	Carolinian	493	739	PTI	231	DCS	113	202
	Crescent	732	1128	FTI	256	DSR	148	1141
	Floridian	817	738	FTI	380	RTE	170	518
	Lake Shore Ltd	1042	986	FTI	505	RTE	166	339
	Pennsylvanian	445	671	RTE	160	FTI	148	249
	Pere Marquette	900	1351	FTI	440	RTE	182	39
	Piedmont	560	728	PTI	272	FTI	140	173
	Richmond / Newport News / Norfolk	427	787	DCS	150	RTE	119	81
	Roanoke	599	718	FTI	224	PTI	190	216
		Silver Star	-	633		-		-
	Wolverine	1500	1765	FTI	659	DCS	408	39
UP	California Zephyr	871	1057	FTI	307	DSR	260	1381
	Capitol Corridor	503	563	PTI	204	DCS	103	171
	Cascades	1274	1714	FTI	379	DSR	353	125
	Coast Starlight	1366	1505	DSR	356	DCS	324	1162
	Lincoln Service	1217	1086	FTI	518	PTI	377	231
	Lincoln / Missouri	884	902	FTI	376	PTI	290	502
	Missouri	563	788	PTI	225	FTI	183	271
	Pacific Surfliner	1287	1314	PTI	575	DCS	548	174
	San Joaquins	886	1263	PTI	466	FTI	216	88
	Sunset Ltd	926	1278	FTI	412	DSR	214	1784
	Texas Eagle	1412	1452	FTI	737	DSR	283	1073

Minutes of Delay per 10K Train Miles by Host for January 2025

Host	Service	Total Host Responsible Delays		Largest Two Delay Categories - Current Month				Route Miles
		Current Month	Most Recent 12 Months	#1		#2		
Target		900	900					
Amtrak	Adirondack	533	529	PTI	188	RTE	107	100
	Blue Water	249	497	PTI	99	FTI	70	99
	Ethan Allen Express	373	346	DMW	182	DSR	52	100
	Floridian	7829	7431	PTI	4302	RTE	1512	3
	Maple Leaf	312	326	RTE	90	PTI	75	109
	New York - Albany	416	307	DSR	122	PTI	85	81
	New York - Niagara Falls	519	514	PTI	154	DCS	94	109
	Wolverine	400	694	PTI	274	DCS	60	99
BBrRR	Cardinal	1065	1276	FTI	457	PTI	399	132
CN-Canada	Adirondack	3317	5651	RTE	1556	FTI	1127	49
Fla DOT	Floridian	892	810	CTI	615	FTI	122	70
	Silver Meteor	925	1237	CTI	676	DSR	115	70
	Silver Star	-	1110		-		-	70
FR	Auto Train	5630	4752	CTI	3493	DSR	1831	16
	Floridian	2724	2373	CTI	1071	DSR	859	61
	Silver Meteor	2013	3397	CTI	855	DSR	526	61
	Silver Star	-	2523		-		-	61
MADOT	Springfield Shuttles	577	638	DCS	337	FTI	72	36
	Vermonter	785	535	DCS	502	DSR	264	50
MBTA	Downeaster	898	1117	DCS	290	CTI	241	38
Metra	Borealis	1206	1264	CTI	824	DCS	123	33
	Empire Builder	2264	2170	CTI	2032	PTI	122	29
	Hiawatha	1615	1804	CTI	1070	DCS	279	29
MIDOT	Blue Water	367	381	PTI	308	DCS	59	22
	Wolverine	696	615	PTI	564	RTE	76	134
MNRR	Acela	1452	1534	DSR	808	CTI	398	56
	Adirondack	491	1142	CTI	324	RTE	144	64
	Ethan Allen Express	1200	1278	CTI	737	RTE	190	64
	Lake Shore Ltd	656	1001	CTI	420	DSR	109	64
	Maple Leaf	853	812	CTI	509	RTE	235	64
	New York - Albany	686	993	CTI	491	RTE	79	64
	New York - Niagara Falls	624	1218	CTI	422	DSR	68	64
	Richmond / Newport News / Norfolk	1319	1591	DSR	738	CTI	371	56
	Vermonter	1904	2624	DSR	1164	CTI	383	56
NECR	Vermonter	431	933	DSR	395	DCS	26	192
NMDOT	Southwest Chief	2111	2877	CTI	1495	DCS	304	80
SCRRA	Coast Starlight	2132	1647	PTI	1121	CTI	418	48
	Pacific Surfliner	1131	1002	PTI	347	CTI	323	95
SDNRR	Pacific Surfliner	955	1011	CTI	374	PTI	289	60
Sounder	Cascades	830	991	PTI	526	CTI	212	20
	Coast Starlight	1565	2025	PTI	1185	CTI	331	20
TRE	Texas Eagle	1590	682	CTI	1178	PTI	282	33
VTR	Ethan Allen Express	270	774	DSR	161	RTE	60	91

The numbers included in this document are preliminary and are for informational purposes only. Excludes hosts with fewer than 15 route miles. Delays on the Amtrak-owned portion of the Northeast Corridor are shown in a separate report, with tighter delay standards. Northeast Regional: Roanoke includes all trains between Roanoke and points on the NEC; Richmond / Newport News / Norfolk includes all trains between these locations and points on the NEC.



Minutes of Delay per 10K Train Miles by Service for January 2025

Service		Host	Total Host Responsible Delays		Largest Two Delay Categories - Current Month				Route Miles
			Current	Most	#1	#2			
Target			900	900					
Acela									
Acela		MNRR	1452	1534	DSR	808	CTI	398	56
All Other NEC Corridor Routes									
Northeast Regional	Richmond / Newport News / Norfolk	CSX	1151	1407	FTI	333	PTI	287	189
		NS	427	787	DCS	150	RTE	119	81
		MNRR	1319	1591	DSR	738	CTI	371	56
	Roanoke	NS	599	718	FTI	224	PTI	190	216
	Springfield Shuttles	MADOT	577	638	DCS	337	FTI	72	36
Non-NEC Corridor Routes									
Borealis		CPKC	606	813	FTI	166	PTI	145	376
		Metra	1206	1264	CTI	824	DCS	123	33
Capitol Corridor		UP	503	563	PTI	204	DCS	103	171
Carolinian		CSX	1694	1753	PTI	509	FTI	470	295
		NS	493	739	PTI	231	DCS	113	202
Cascades		BNSF	1208	1341	FTI	385	DSR	308	317
		UP	1274	1714	FTI	379	DSR	353	125
		Sounder	830	991	PTI	526	CTI	212	20
Downeaster		CSX	654	721	PTI	255	DCS	203	107
		MBTA	898	1117	DCS	290	CTI	241	38
Empire	Adirondack	CPKC	646	997	PTI	389	DCS	102	178
		Amtrak	533	529	PTI	188	RTE	107	100
		CN-Canada	3317	5651	RTE	1556	FTI	1127	49
		MNRR	491	1142	CTI	324	RTE	144	64
	Ethan Allen Express	CPKC	1131	1469	PTI	672	DMW	193	60
		Amtrak	373	346	DMW	182	DSR	52	100
		MNRR	1200	1278	CTI	737	RTE	190	64
		VTR	270	774	DSR	161	RTE	60	91
	Maple Leaf	CSX	481	843	FTI	291	PTI	52	298
		Amtrak	312	326	RTE	90	PTI	75	109
		MNRR	853	812	CTI	509	RTE	235	64
	New York - Albany	Amtrak	416	307	DSR	122	PTI	85	81
		MNRR	686	993	CTI	491	RTE	79	64
	New York - Niagara Falls	CSX	479	769	FTI	322	DSR	57	296
		Amtrak	519	514	PTI	154	DCS	94	109
		MNRR	624	1218	CTI	422	DSR	68	64
Heartland Flyer		BNSF	1409	1562	DSR	965	FTI	299	236
Hiawatha		CPKC	132	252	PTI	43	FTI	32	53
		Metra	1615	1804	CTI	1070	DCS	279	29
Illinois	Carl Sandburg / Illinois Zephyr	BNSF	619	800	FTI	229	DSR	195	257
	Illini / Saluki	CN-IC	488	658	FTI	241	PTI	118	304
	Lincoln Service	CN-IC	1876	2155	FTI	1205	DSR	281	35
		UP	1217	1086	FTI	518	PTI	377	231
Lincoln / Missouri		CN-IC	3154	2733	FTI	2173	DSR	387	35
		UP	884	902	FTI	376	PTI	290	502
Michigan	Blue Water	CN-IC	636	555	FTI	300	DSR	277	159
		NS	1489	1749	FTI	750	DCS	294	39
		Amtrak	249	497	PTI	99	FTI	70	99
		MIDOT	367	381	PTI	308	DCS	59	22
	Pere Marquette	CSX	274	239	FTI	133	DCS	115	135
		NS	900	1351	FTI	440	RTE	182	39
	Wolverine	CN-IC	2162	2023	DSR	1542	DCS	282	27
		NS	1500	1765	FTI	659	DCS	408	39
		Amtrak	400	694	PTI	274	DCS	60	99
		MIDOT	696	615	PTI	564	RTE	76	134
Missouri		UP	563	788	PTI	225	FTI	183	271
Pacific Surfliner		BNSF	664	1675	FTI	181	DCS	181	22
		UP	1287	1314	PTI	575	DCS	548	174
		SCRRA	1131	1002	PTI	347	CTI	323	95
		SDNRR	955	1011	CTI	374	PTI	289	60
Pennsylvanian		NS	445	671	RTE	160	FTI	148	249
Piedmont		NS	560	728	PTI	272	FTI	140	173
San Joaquins		BNSF	961	1089	PTI	367	FTI	242	284
		UP	886	1263	PTI	466	FTI	216	88
Vermont		MADOT	785	535	DCS	502	DSR	264	50
		MNRR	1904	2624	DSR	1164	CTI	383	56
		NECR	431	933	DSR	395	DCS	26	192

Minutes of Delay per 10K Train Miles by Service for January 2025

Service	Host	Total Host Responsible Delays		Largest Two Delay Categories - Current Month				Route Miles
		Current	Most	#1	#2			
Target		900	900					
Long-Distance Routes								
Auto Train	CSX	1349	1374	FTI	530	DSR	279	898
	FR	5630	4752	CTI	3493	DSR	1831	16
California Zephyr	BNSF	685	737	FTI	219	DSR	142	1027
	UP	871	1057	FTI	307	DSR	260	1381
Capitol Ltd	CSX	-	723		-		-	307
	NS	-	1040		-		-	481
Cardinal	CSX	1070	811	FTI	642	DSR	135	703
	NS	940	1365	PTI	534	FTI	180	79
	BBrRR	1065	1276	FTI	457	PTI	399	132
City Of New Orleans	CN-IC	655	821	FTI	294	PTI	129	930
Coast Starlight	BNSF	1094	1299	FTI	330	RTE	287	158
	UP	1366	1505	DSR	356	DCS	324	1162
	SCRRA	2132	1647	PTI	1121	CTI	418	48
	Sounder	1565	2025	PTI	1185	CTI	331	20
Crescent	NS	732	1128	FTI	256	DSR	148	1141
Empire Builder	BNSF	798	792	FTI	526	DSR	86	2147
	CPKC	464	665	FTI	160	PTI	124	384
	Metra	2264	2170	CTI	2032	PTI	122	29
Floridian	CSX	1105	1056	FTI	350	PTI	253	1413
	NS	817	738	FTI	380	RTE	170	518
	Amtrak	7829	7431	PTI	4302	RTE	1512	3
	Fla DOT	892	810	CTI	615	FTI	122	70
	FR	2724	2373	CTI	1071	DSR	859	61
Lake Shore Ltd	CSX	584	721	FTI	263	RTE	123	741
	NS	1042	986	FTI	505	RTE	166	339
	MNRR	656	1001	CTI	420	DSR	109	64
Palmetto	CSX	1022	1063	FTI	388	PTI	308	659
Silver Meteor	CSX	813	929	FTI	319	PTI	210	1152
	Fla DOT	925	1237	CTI	676	DSR	115	70
	FR	2013	3397	CTI	855	DSR	526	61
Silver Star	CSX	-	1039		-		-	1209
	NS	-	633		-		-	28
	Fla DOT	-	1110		-		-	70
	FR	-	2523		-		-	61
Southwest Chief	BNSF	833	863	FTI	285	DSR	252	2206
	NMDOT	2111	2877	CTI	1495	DCS	304	80
Sunset Ltd	BNSF	765	1036	DSR	349	FTI	168	190
	UP	926	1278	FTI	412	DSR	214	1784
Texas Eagle	BNSF	2435	2400	DSR	1617	FTI	656	116
	CN-IC	2983	2069	FTI	2177	DCS	311	35
	UP	1412	1452	FTI	737	DSR	283	1073
	TRE	1590	682	CTI	1178	PTI	282	33

The numbers included in this document are preliminary and are for informational purposes only.

Excludes hosts with fewer than 15 route miles.

Delays on the Amtrak-owned portion of the Northeast Corridor are shown in a separate report, with tighter delay standards.

Northeast Regional: Roanoke includes all trains between Roanoke and points on the NEC; Richmond / Newport News /

Norfolk includes all trains between these locations and points on the NEC.

Host Railroad Report - All-Stations and Customer OTP for January 2025

Service	All-Stations OTP		Customer OTP		Avg Mins Late per Late Rider**	
	Current Month	Most Recent 12 Months	Current Month	Most Recent 12 Months	Current Month	Most Recent 12 Months
Amtrak System	75.2%	75.1%	75.9%	73.5%	57	55
NEC Corridor Routes	80.1%	80.8%	77.8%	76.7%	42	44
Minimum Standard			80.0%	80.0%		
Acela*	77.7%	79.9%	76.5%	76.2%	37	35
Keystone	89.1%	91.4%	85.1%	88.8%	38	35
Northeast Regional	77.7%	77.6%	76.4%	74.3%	43	47
On Spine Northeast Regional	78.8%	80.8%	78.8%	78.3%	46	46
Richmond / Newport News / Norfolk	72.6%	70.1%	71.6%	66.9%	40	47
Roanoke	77.2%	76.8%	77.2%	73.3%	41	51
Springfield Shuttles	88.3%	87.7%	88.5%	87.7%	35	39
Non-NEC Corridor Routes	80.8%	79.8%	80.1%	75.5%	49	45
Minimum Standard			80.0%	80.0%		
Borealis	57.4%	67.2%	69.7%	56.8%	86	51
Capitol Corridor	92.8%	91.8%	90.8%	88.9%	36	38
Carolinian	67.9%	50.8%	66.9%	47.8%	47	63
Cascades	75.1%	67.6%	68.0%	58.0%	49	45
Downeaster	90.1%	86.7%	86.3%	78.6%	34	37
Empire	83.5%	81.0%	83.0%	80.6%	51	41
Adirondack	88.6%	80.2%	83.6%	78.1%	39	35
Berkshire Flyer	-	68.0%	-	69.9%	-	44
Ethan Allen Express	79.5%	74.9%	84.4%	70.8%	82	38
Maple Leaf	79.4%	72.9%	77.6%	75.1%	30	45
New York - Albany	85.9%	90.5%	84.7%	88.0%	57	38
New York - Niagara Falls	82.0%	76.9%	82.1%	74.6%	46	44
Heartland Flyer	74.9%	70.4%	79.1%	68.1%	31	44
Hiawatha	85.6%	90.9%	90.6%	87.0%	35	38
Illinois	72.1%	79.9%	70.3%	75.8%	58	47
Carl Sandburg / Illinois Zephyr	83.2%	84.6%	86.3%	85.1%	57	49
Illini / Saluki	79.2%	85.2%	86.2%	85.7%	90	52
Lincoln Service	58.3%	72.4%	52.5%	66.0%	51	45
Lincoln / Missouri	48.6%	56.2%	48.2%	53.5%	50	47
Michigan	69.5%	71.0%	69.1%	73.4%	71	47
Blue Water	67.0%	79.5%	53.1%	74.7%	83	53
Pere Marquette	90.3%	89.1%	86.3%	84.8%	41	37
Wolverine	67.5%	66.2%	72.0%	70.4%	66	46
Missouri	72.7%	79.9%	84.9%	80.2%	41	40
Pacific Surfliner	79.5%	83.0%	86.8%	82.1%	40	42
Pennsylvanian	84.1%	69.5%	83.5%	67.0%	39	43
Piedmont	91.3%	83.7%	85.0%	77.0%	32	41
San Joaquins	80.9%	77.5%	78.5%	73.4%	45	45
Vermonteer	82.7%	69.6%	79.4%	67.8%	41	46
Long-Distance Routes	51.6%	52.5%	56.3%	55.0%	102	92
Minimum Standard			80.0%	80.0%		
Auto Train	57.3%	63.5%	39.2%	47.8%	136	117
California Zephyr	62.4%	49.6%	67.2%	52.8%	101	105
Capitol Ltd	-	66.0%	-	70.6%	-	62
Cardinal	40.7%	54.4%	45.1%	55.2%	110	82
City Of New Orleans	54.2%	66.4%	72.9%	79.9%	79	74
Coast Starlight	57.0%	53.1%	59.0%	54.2%	84	88
Crescent	64.3%	58.1%	77.5%	62.6%	62	73
Empire Builder	43.8%	55.1%	51.0%	55.3%	121	106
Floridian	30.3%	35.2%	30.6%	34.3%	143	110
Lake Shore Ltd	64.5%	75.6%	66.6%	75.7%	73	59
Palmetto	70.1%	61.3%	71.0%	60.5%	46	54
Silver Meteor	60.0%	45.8%	59.5%	42.4%	56	84
Silver Star	-	38.5%	-	35.2%	-	84
Southwest Chief	38.0%	32.1%	47.0%	33.1%	125	129
Sunset Ltd	49.5%	51.4%	75.6%	62.0%	44	112
Texas Eagle	46.7%	50.6%	53.1%	55.6%	70	88

The numbers included in this document are preliminary and are for informational purposes only.

Northeast Regional: Roanoke includes all trains between Roanoke and points on the NEC; Richmond/Newport News/Norfolk includes all trains between these locations and points on the NEC.

* Acela on-time performance target is 90.0%

** Excludes on-time Customers



Host Railroad Responsible Delays

Code	Code Description	Explanation
CTI	Commuter Train Interference	Delays for meeting or following commuter trains
DCS	Signal Delays	Signal failure or All Other signal delays, wayside defect-detector false-alarms, defective road crossing protection, efficiency tests, drawbridge stuck open
DMW	Maintenance of Way	Maintenance of Way delays including holds for track repairs or MW foreman to clear
DSR	Slow Order Delays	Temporary slow orders, except heat or cold orders
DTR	Detour	Delays from detours
FTI	Freight Train Interference	Delays from freight trains
PTI	Passenger Train Interference	Delays for meeting or following All Other passenger trains
RTE	Routing	Routing-dispatching delays including diversions, late track bulletins, etc.

Amtrak Responsible Delays

Code	Code Description	Explanation
ADA	Passenger Related	All delays related to disabled passengers, wheel chair lifts, guide dogs, etc.
CAR	Car Failure	Mechanical failure on all types of cars
CCR	Cab Car Failure	Mechanical failure on Cab Cars
CON	Hold for Connection	Holding for connections from All Other trains or buses.
ENG	Locomotive Failure	Mechanical failure on engines.
HLD	Passenger Related	All delays related to passengers, checked-baggage, large groups, etc.
INJ	Injury Delay	Delay due to injured passengers or employees.
ITI	Initial Terminal Delay	Delay at initial terminal due to late arriving inbound trains causing late release of equipment.
OTH	Miscellaneous Delays	Lost-on-run, heavy trains, unable to make normal speed, etc.
SVS	Servicing	All switching and servicing delays
SYS	Crew & System	Delays related to crews including lateness, lone-engineer delays

Third-Party Delays

Code	Code Description	Explanation
CUI	Customs	U.S. and Canadian customs delays; Immigration-related delays
DBS	Debris	Debris strikes
MBO	Drawbridge Openings	Movable bridge openings for marine traffic where no bridge failure is involved
NOD	Unused Recovery Time	Wait for departure time
POL	Police-Related	Police/fire department holds on right-of-way or on-board trains
TRS	Trespassers	Trespasser incidents including road crossing accidents, trespasser / animal strikes, vehicle stuck on track ahead, bridge strikes
WTR	Weather-Related	All weather-related delays including floods/washouts, earthquake-related delays, heat or cold orders, slippery rail due to leaves

*These delay codes are applicable to Off-NEC routes only.