



Host Railroad Report

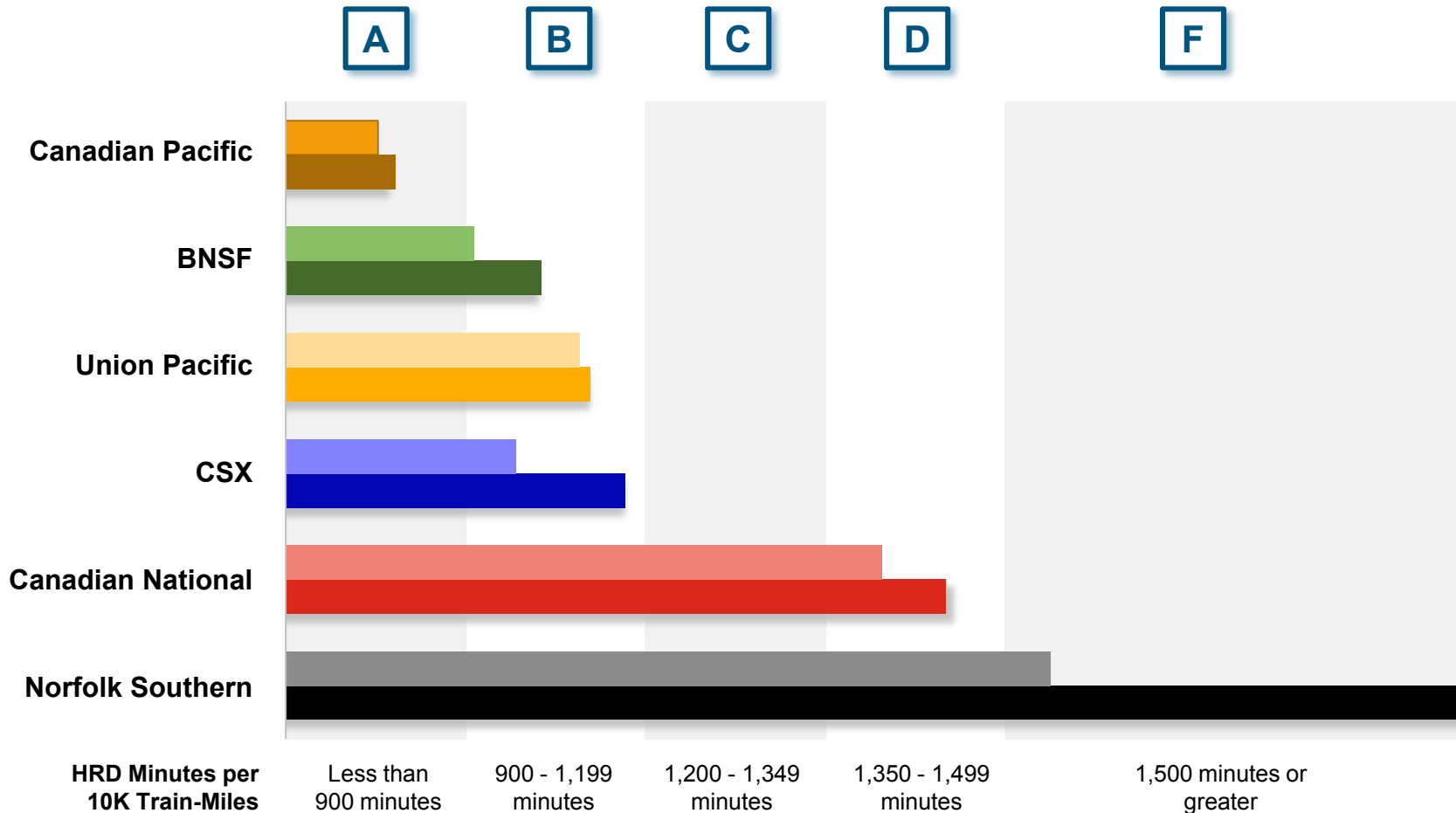
Amtrak Train Performance on Host Railroads

Data through January 2019

Host Railroad Report Card Update

Current Month and 1 Year Snapshot

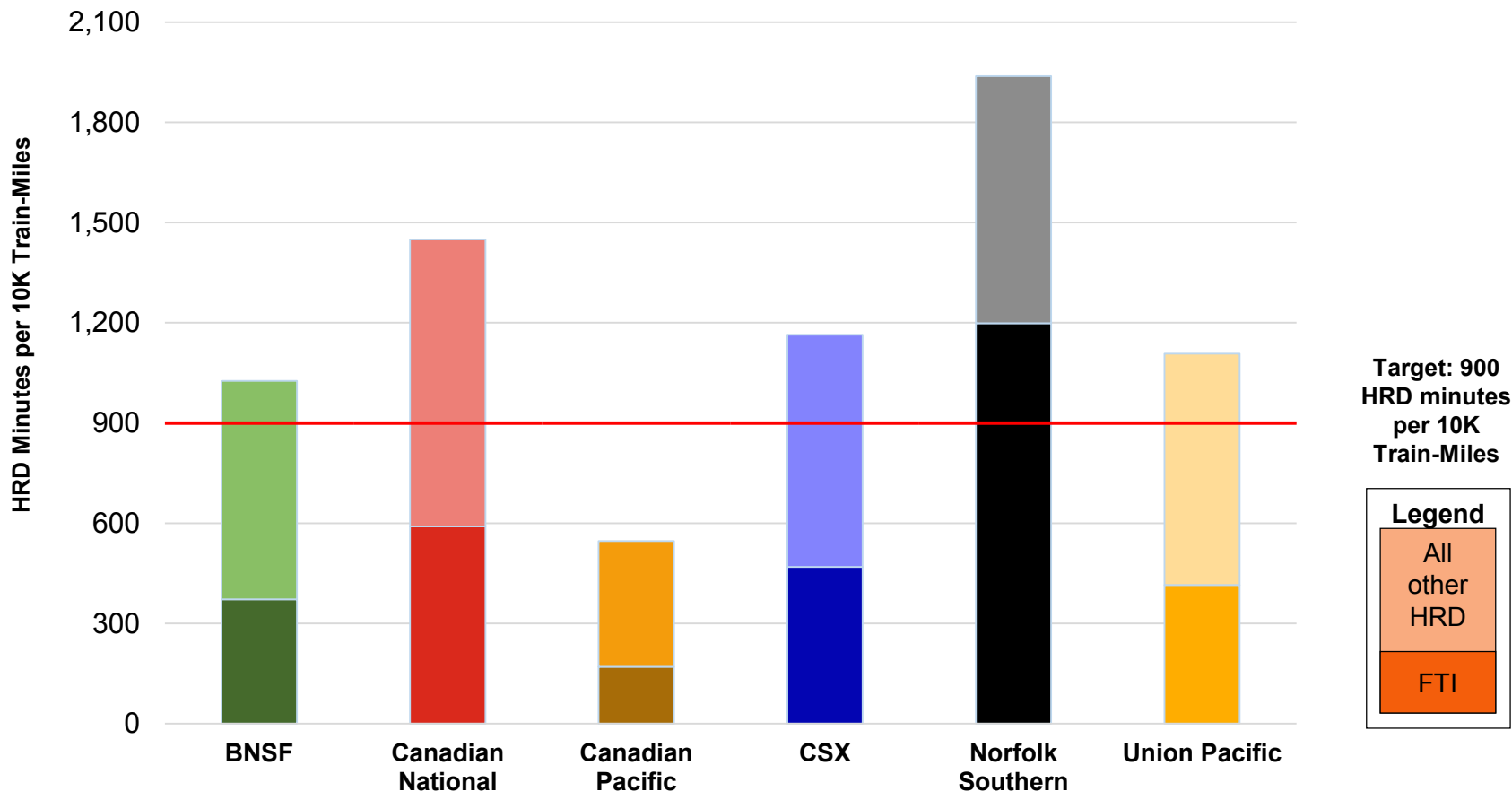
A monthly update of the Host Railroad Report Card, which grades the six major host railroads based on host responsible delay (HRD) minutes per 10,000 train-miles for the current month (lighter shade) and the most recent 12 months.



Total Host-Responsible Delays

1 Year Snapshot

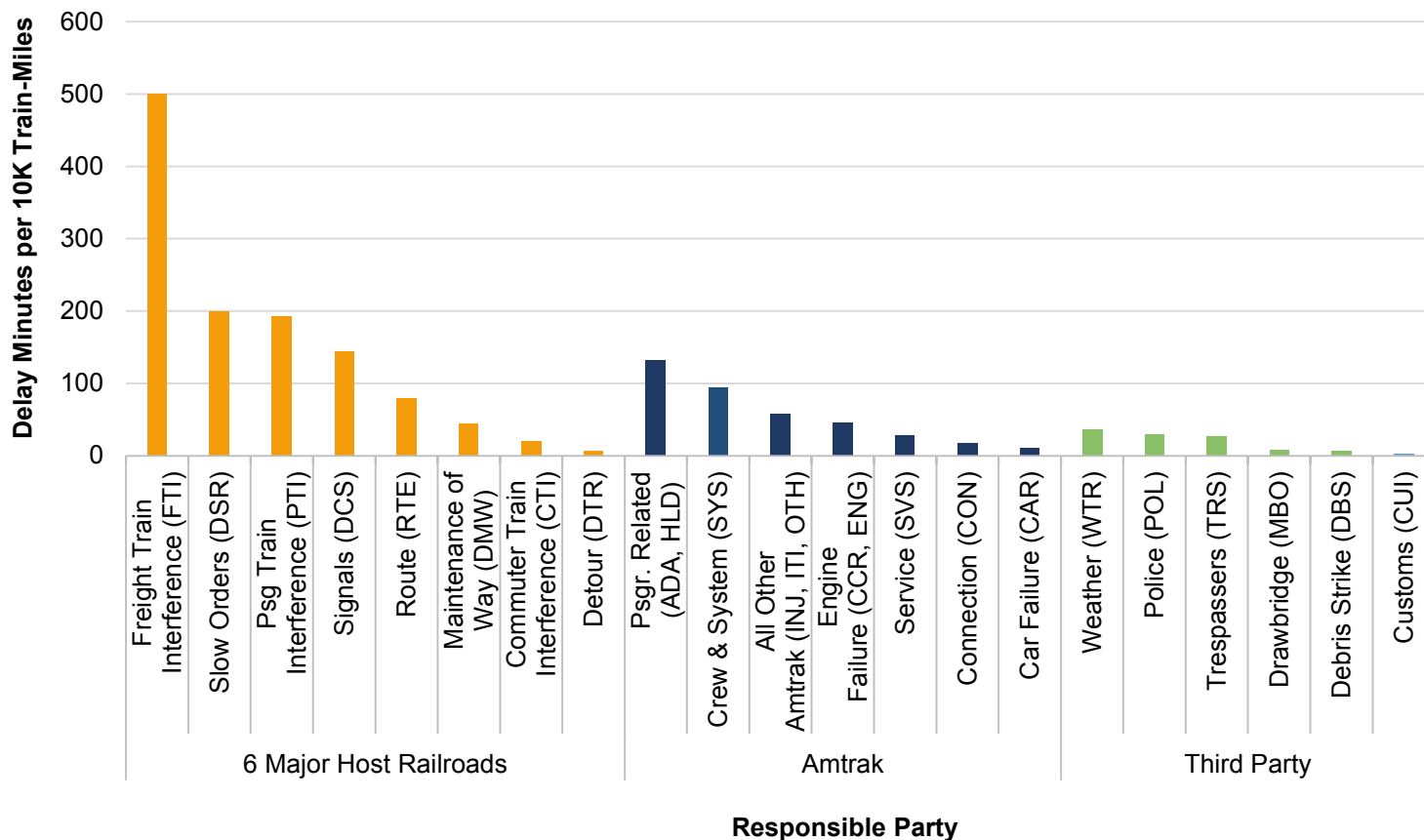
Total host-responsible delay (HRD) minutes per 10,000 train-miles incurred by Amtrak trains on the six major host railroads, with delays attributable to freight train interference (FTI) shaded.



Delays to Amtrak Trains by Responsible Party

1 Year Snapshot

Delay minutes per 10,000 train-miles on the six major host railroads categorized by delay type and responsible party.

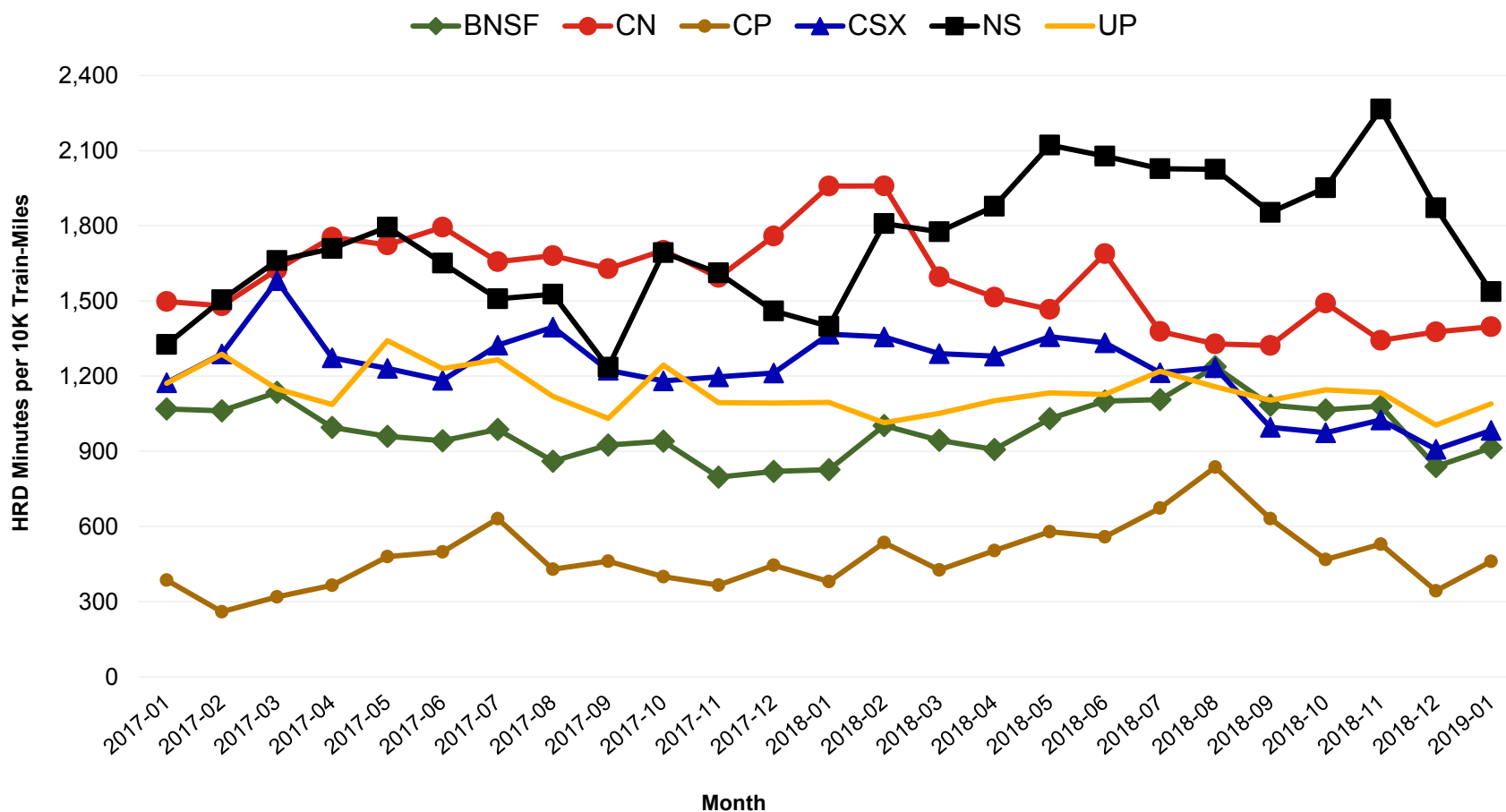


Responsible Party	6 Major Host Railroads	Amtrak	Third Party
Delay Minutes per 10K Train-Miles	1187	385	109
Percentage of Total Delays	70.6%	22.9%	6.5%

Total Host-Responsible Delays

2 Year Snapshot

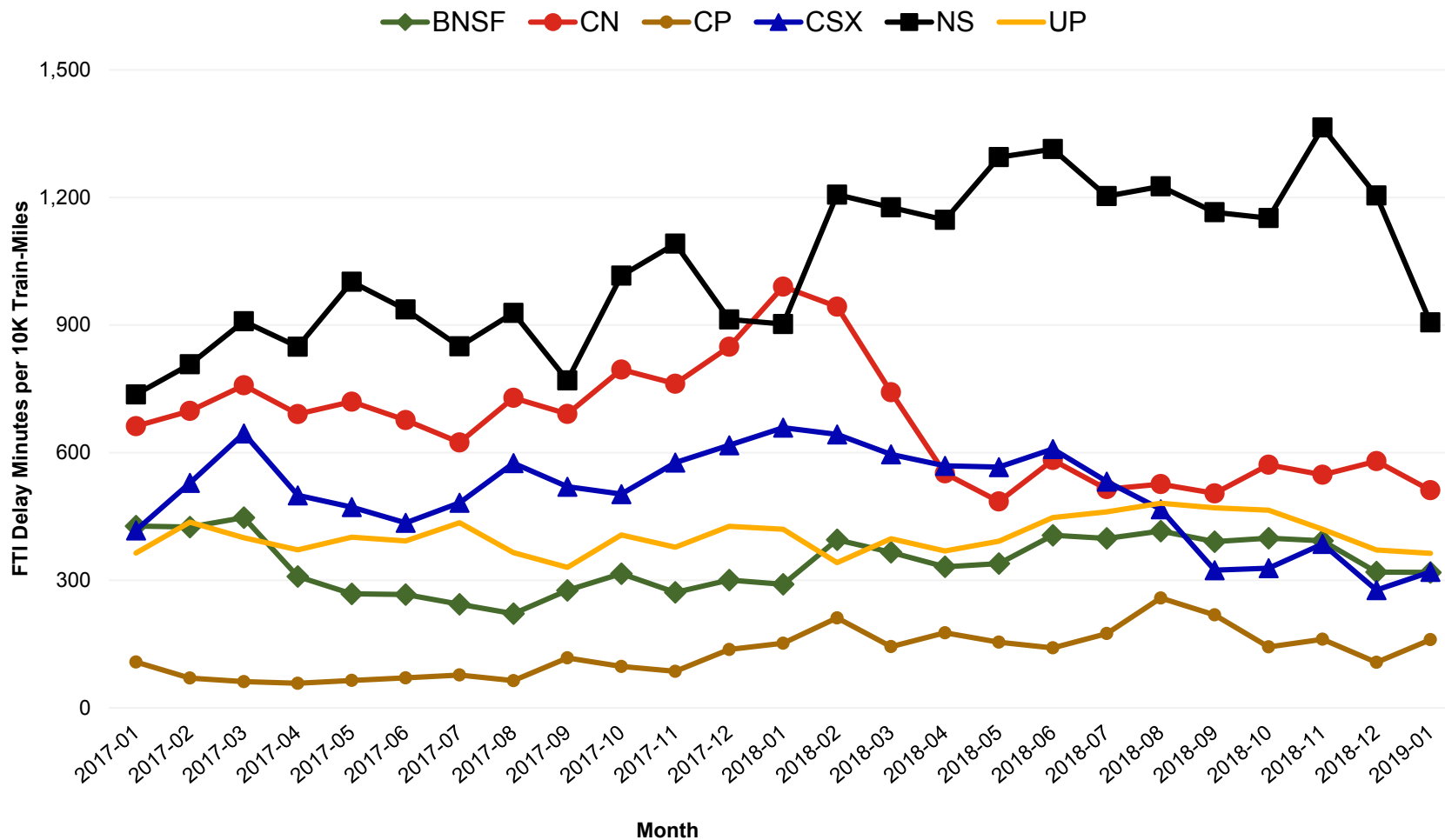
Total host-responsible delay (HRD) minutes per 10,000 train-miles incurred by Amtrak trains on each of the six major host railroads for the most recent two years.



Freight Train Interference Delays

2 Year Snapshot

Total delay minutes per 10,000 train-miles attributable to freight train interference (FTI) incurred by Amtrak trains on each of the six major host railroads for the most recent two years.



Minutes of Delay per 10K Train Miles by Host for January 2019

Host	Service	Total Host Responsible Delays		Largest Two Delay Categories - Current Month				Route Miles
		Current Month	Most Recent 12 Months	#1		#2		
Target		900	900					
BNSF	California Zephyr	1489	1171	FTI	629	DSR	375	1027
	Carl Sandburg / Illinois Zephyr	555	616	FTI	171	DCS	153	257
	Cascades	1451	1358	DSR	500	FTI	371	343
	Coast Starlight	741	781	DSR	199	DCS	145	186
	Empire Builder	646	1034	FTI	338	DSR	165	2147
	Heartland Flyer	1343	2146	DSR	540	FTI	513	236
	Pacific Surfliner	1272	1241	DCS	387	FTI	203	22
	San Joaquins	959	1012	PTI	383	FTI	274	284
	Southwest Chief	540	720	FTI	180	DCS	121	2206
	Sunset Ltd	2615	1678	FTI	1421	DSR	552	190
Texas Eagle	1230	1879	DSR	775	FTI	270	116	
CN	Adirondack	3091	3046	DSR	1414	RTE	912	49
	Blue Water	757	826	FTI	511	DCS	146	159
	City Of New Orleans	1125	1211	FTI	522	RTE	220	930
	Illini / Saluki	1530	1740	DCS	801	FTI	356	304
	Lincoln Service	2235	1739	FTI	750	DTR	541	35
	Texas Eagle	3611	2798	FTI	1470	DCS	910	35
	Wolverine	2342	1936	DSR	789	FTI	718	27
CP	Adirondack	672	750	PTI	440	FTI	118	178
	Empire Builder	469	684	FTI	240	DCS	113	384
	Ethan Allen Express	650	653	PTI	315	FTI	158	60
	Hiawatha	310	286	FTI	96	CTI	62	53
CSX	Auto Train	1209	1263	FTI	550	PTI	242	898
	Capitol Ltd	664	1186	FTI	173	DCS	142	307
	Cardinal	486	925	FTI	154	DCS	146	703
	Carolinian	1302	1696	FTI	294	PTI	264	295
	Hoosier	608	740	DCS	350	FTI	170	175
	Lake Shore Ltd	818	974	FTI	351	RTE	187	741
	Maple Leaf	1164	1299	FTI	565	RTE	309	298
	New York - Niagara Falls	1330	1081	FTI	600	DCS	336	296
	Palmetto	962	1112	FTI	295	PTI	233	659
	Pere Marquette	402	451	FTI	251	DCS	123	135
	Richmond / Newport News / Norfolk	1173	1751	DSR	248	PTI	245	189
	Silver Meteor	692	868	FTI	220	PTI	163	1152
	Silver Star	1022	1164	PTI	262	DSR	233	1209
NS	Blue Water	5403	3445	FTI	3205	DCS	1303	39
	Capitol Ltd	2486	2716	FTI	1828	PTI	240	481
	Cardinal	1521	1573	PTI	588	CTI	279	79
	Carolinian	866	1052	DCS	256	PTI	236	202
	Crescent	1347	1970	FTI	755	DSR	239	1141
	Lake Shore Ltd	2192	3021	FTI	1590	PTI	227	339
	Pennsylvanian	989	1388	FTI	655	RTE	153	249
	Pere Marquette	3586	2656	FTI	1343	DCS	1166	39
	Piedmont	724	1204	FTI	225	DCS	188	173
	Richmond / Newport News / Norfolk	394	465	DCS	171	RTE	121	81
	Roanoke	596	776	FTI	277	DCS	117	216
	Silver Star	610	985	DCS	194	DSR	165	28
	Wolverine	4490	3417	FTI	2898	DCS	818	39
UP	California Zephyr	703	710	FTI	280	PTI	150	1381
	Capitol Corridor	619	579	PTI	236	DSR	166	171
	Cascades	2255	1275	FTI	1124	DSR	419	125
	Coast Starlight	1505	1242	FTI	510	PTI	436	1162
	Lincoln Service	883	987	PTI	339	FTI	235	231
	Missouri	822	773	FTI	515	DCS	110	271
	Pacific Surfliner	1362	1334	PTI	835	DCS	173	174
	San Joaquins	1051	1187	PTI	437	FTI	182	88
	Sunset Ltd	1663	1752	FTI	931	DSR	254	1784
	Texas Eagle	1410	1844	FTI	529	DSR	275	1073

Minutes of Delay per 10K Train Miles by Host for January 2019

Host	Service	Total Host Responsible Delays		Largest Two Delay Categories - Current Month				Route Miles
		Current Month	Most Recent 12 Months	#1		#2		
Target		900	900					
Amtrak	Adirondack	354	527	PTI	121	RTE	81	100
	Blue Water	487	772	DCS	235	PTI	134	99
	Ethan Allen Express	527	647	PTI	222	DCS	136	100
	Maple Leaf	347	459	DCS	149	PTI	96	109
	New York - Albany	263	373	DCS	87	PTI	74	81
	New York - Niagara Falls	339	444	PTI	157	RTE	68	109
	Wolverine	677	1042	PTI	372	DCS	156	99
	BBrRR	Cardinal	850	1302	PTI	519	DCS	122
Fla DOT	Silver Meteor	1710	1361	DSR	987	CTI	433	68
	Silver Star	2046	1455	DSR	790	DCS	644	68
FR	Auto Train	2376	2924	CTI	1344	DSR	624	16
	Silver Meteor	1210	1847	CTI	458	DCS	236	61
	Silver Star	1163	1219	CTI	479	DSR	328	61
MADOT	Vermonteer	2148	2268	DSR	1835	PTI	168	50
MBTA	Downeaster	957	1170	CTI	466	DCS	191	38
Metra	Empire Builder	1102	1529	CTI	627	DCS	226	29
	Hiawatha	1573	1391	CTI	887	DSR	264	29
MIDOT	Blue Water	337	475	DCS	141	DMW	102	22
	Wolverine	545	566	PTI	317	DCS	152	134
MNRR	Acela Express	1529	1950	DSR	719	CTI	620	56
	Adirondack	566	1379	CTI	281	RTE	129	64
	All Other Northeast Regional	1804	2113	DSR	957	CTI	657	56
	Ethan Allen Express	712	1527	CTI	332	RTE	203	64
	Lake Shore Ltd	645	1452	CTI	329	RTE	154	64
	Maple Leaf	631	1295	CTI	304	RTE	198	64
	New York - Albany	736	1380	CTI	433	RTE	149	64
	New York - Niagara Falls	911	1801	CTI	481	DMW	128	64
	Richmond / Newport News / Norfolk	2094	2491	DSR	930	CTI	744	56
	Vermonteer	1878	2659	DSR	1060	CTI	490	56
NECR	Vermonteer	910	1274	DSR	547	FTI	210	238
NMDOT	Southwest Chief	1172	1867	PTI	328	DCS	263	80
PanAm	Downeaster	940	1115	PTI	283	DMW	195	107
SCRRA	Coast Starlight	2380	2376	PTI	1185	CTI	859	48
	Pacific Surfliner	1072	1028	PTI	419	CTI	352	95
SDNRR	Pacific Surfliner	1684	1591	CTI	637	PTI	541	60
TRE	Texas Eagle	2730	2524	CTI	1667	DTR	309	33
VTR	Ethan Allen Express	0	169		0		0	24

The numbers included in this document are preliminary and are for informational purposes only.
 Excludes hosts with fewer than 15 route miles.
 Delays on the Amtrak-owned portion of the Northeast Corridor are shown in a separate report, with tighter delay standards.
 Northeast Regional: Roanoke includes all trains between Roanoke and points on the NEC; Richmond / Newport News / Norfolk includes all trains between these locations and points on the NEC.

Minutes of Delay per 10K Train Miles by Service for January 2019

Service	Host	Total Host Responsible Delays		Largest Two Delay Categories - Current Month				Route Miles	
		Current Month	Most Recent 12 Months	#1		#2			
Target		900	900						
Acela Express									
Acela Express	MNRR	1529	1950	DSR	719	CTI	620	56	
All Other NEC Corridor Routes									
Northeast Regional	Richmond / Newport News / Norfolk	CSX	1173	1751	DSR	248	PTI	245	189
		NS	394	465	DCS	171	RTE	121	81
		MNRR	2094	2491	DSR	930	CTI	744	56
	All Other Northeast Regional	MNRR	1804	2113	DSR	957	CTI	657	56
	Roanoke	NS	596	776	FTI	277	DCS	117	216
Non-NEC Corridor Routes									
Capitol Corridor		UP	619	579	PTI	236	DSR	166	171
Carolinian		CSX	1302	1696	FTI	294	PTI	264	295
		NS	866	1052	DCS	256	PTI	236	202
Cascades		BNSF	1451	1358	DSR	500	FTI	371	343
		UP	2255	1275	FTI	1124	DSR	419	125
Downeaster		MBTA	957	1170	CTI	466	DCS	191	38
		PanAm	940	1115	PTI	283	DMW	195	107
Empire	Adirondack	CN	3091	3046	DSR	1414	RTE	912	49
		CP	672	750	PTI	440	FTI	118	178
		Amtrak	354	527	PTI	121	RTE	81	100
		MNRR	566	1379	CTI	281	RTE	129	64
	Ethan Allen Express	CP	650	653	PTI	315	FTI	158	60
		Amtrak	527	647	PTI	222	DCS	136	100
		MNRR	712	1527	CTI	332	RTE	203	64
		VTR	0	169	0	0	0	24	
	Maple Leaf	CSX	1164	1299	FTI	565	RTE	309	298
		Amtrak	347	459	DCS	149	PTI	96	109
		MNRR	631	1295	CTI	304	RTE	198	64
	New York - Albany	Amtrak	263	373	DCS	87	PTI	74	81
		MNRR	736	1380	CTI	433	RTE	149	64
	New York - Niagara Falls	CSX	1330	1081	FTI	600	DCS	336	296
		Amtrak	339	444	PTI	157	RTE	68	109
		MNRR	911	1801	CTI	481	DMW	128	64
Heartland Flyer		BNSF	1343	2146	DSR	540	FTI	513	236
Hiawatha		CP	310	286	FTI	96	CTI	62	53
		Metra	1573	1391	CTI	887	DSR	264	29
Hoosier		CSX	608	740	DCS	350	FTI	170	175
Illinois	Carl Sandburg / Illinois Zephyr	BNSF	555	616	FTI	171	DCS	153	257
	Illini / Saluki	CN	1530	1740	DCS	801	FTI	356	304
	Lincoln Service	CN	2235	1739	FTI	750	DTR	541	35
		UP	883	987	PTI	339	FTI	235	231
Michigan	Blue Water	CN	757	826	FTI	511	DCS	146	159
		NS	5403	3445	FTI	3205	DCS	1303	39
		Amtrak	487	772	DCS	235	PTI	134	99
		MIDOT	337	475	DCS	141	DMW	102	22
	Pere Marquette	CSX	402	451	FTI	251	DCS	123	135
		NS	3586	2656	FTI	1343	DCS	1166	39
	Wolverine	CN	2342	1936	DSR	789	FTI	718	27
		NS	4490	3417	FTI	2898	DCS	818	39
		Amtrak	677	1042	PTI	372	DCS	156	99
		MIDOT	545	566	PTI	317	DCS	152	134
Missouri		UP	822	773	FTI	515	DCS	110	271
Pacific Surfliner		BNSF	1272	1241	DCS	387	FTI	203	22
		UP	1362	1334	PTI	835	DCS	173	174
		SCRRA	1072	1028	PTI	419	CTI	352	95
		SDNRR	1684	1591	CTI	637	PTI	541	60
Pennsylvanian		NS	989	1388	FTI	655	RTE	153	249
Piedmont		NS	724	1204	FTI	225	DCS	188	173
San Joaquins		BNSF	959	1012	PTI	383	FTI	274	284
		UP	1051	1187	PTI	437	FTI	182	88
Vermont		MADOT	2148	2268	DSR	1835	PTI	168	50
		MNRR	1878	2659	DSR	1060	CTI	490	56
		NECR	910	1274	DSR	547	FTI	210	238

Minutes of Delay per 10K Train Miles by Service for January 2019

Service	Host	Total Host Responsible Delays		Largest Two Delay Categories - Current Month				Route Miles
		Current Month	Most Recent 12 Months	#1		#2		
Target		900	900					
Long-Distance Routes								
Auto Train	CSX	1209	1263	FTI	550	PTI	242	898
	FR	2376	2924	CTI	1344	DSR	624	16
California Zephyr	BNSF	1489	1171	FTI	629	DSR	375	1027
	UP	703	710	FTI	280	PTI	150	1381
Capitol Ltd	CSX	664	1186	FTI	173	DCS	142	307
	NS	2486	2716	FTI	1828	PTI	240	481
Cardinal	CSX	486	925	FTI	154	DCS	146	703
	NS	1521	1573	PTI	588	CTI	279	79
	BBrRR	850	1302	PTI	519	DCS	122	132
City Of New Orleans	CN	1125	1211	FTI	522	RTE	220	930
Coast Starlight	BNSF	741	781	DSR	199	DCS	145	186
	UP	1505	1242	FTI	510	PTI	436	1162
	SCRRA	2380	2376	PTI	1185	CTI	859	48
Crescent	NS	1347	1970	FTI	755	DSR	239	1141
Empire Builder	BNSF	646	1034	FTI	338	DSR	165	2147
	CP	469	684	FTI	240	DCS	113	384
	Metra	1102	1529	CTI	627	DCS	226	29
Lake Shore Ltd	CSX	818	974	FTI	351	RTE	187	741
	NS	2192	3021	FTI	1590	PTI	227	339
	MNRR	645	1452	CTI	329	RTE	154	64
Palmetto	CSX	962	1112	FTI	295	PTI	233	659
Silver Meteor	CSX	692	868	FTI	220	PTI	163	1152
	Fla DOT	1710	1361	DSR	987	CTI	433	68
	FR	1210	1847	CTI	458	DCS	236	61
Silver Star	CSX	1022	1164	PTI	262	DSR	233	1209
	NS	610	985	DCS	194	DSR	165	28
	Fla DOT	2046	1455	DSR	790	DCS	644	68
	FR	1163	1219	CTI	479	DSR	328	61
Southwest Chief	BNSF	540	720	FTI	180	DCS	121	2206
	NMDOT	1172	1867	PTI	328	DCS	263	80
Sunset Ltd	BNSF	2615	1678	FTI	1421	DSR	552	190
	UP	1663	1752	FTI	931	DSR	254	1784
Texas Eagle	BNSF	1230	1879	DSR	775	FTI	270	116
	CN	3611	2798	FTI	1470	DCS	910	35
	UP	1410	1844	FTI	529	DSR	275	1073
	TRE	2730	2524	CTI	1667	DTR	309	33

The numbers included in this document are preliminary and are for informational purposes only.
 Excludes hosts with fewer than 15 route miles.
 Delays on the Amtrak-owned portion of the Northeast Corridor are shown in a separate report, with tighter delay standards.
 Northeast Regional: Roanoke includes all trains between Roanoke and points on the NEC; Richmond / Newport News / Norfolk includes all trains between these locations and points on the NEC.

All Stations and Customer OTP for January 2019

Service	All Stations OTP		Customer OTP		Avg Mins Late per Late Rider**	
	Current Month	Most Recent 12 Months	Current Month	Most Recent 12 Months	Current Month	Most Recent 12 Months
Amtrak System	74.7%	72.6%	75.7%	72.8%	55	58
NEC Corridor Routes	88.2%	83.4%	84.4%	82.1%	38	39
Target*	80.0%	80.0%				
Acela Express*	85.6%	79.5%	80.8%	80.6%	32	29
Keystone	94.4%	91.8%	93.6%	90.8%	30	36
Northeast Regional	86.7%	81.6%	83.4%	80.3%	42	43
All Other Northeast Regional	88.3%	86.4%	85.6%	85.9%	44	41
Richmond / Newport News / Norfolk	82.4%	74.8%	79.2%	72.0%	41	44
Roanoke	82.8%	75.1%	81.0%	72.1%	36	44
Springfield Shuttles	92.7%	83.6%	91.6%	85.2%	34	35
Non-NEC Corridor Routes	75.8%	76.5%	73.2%	72.3%	48	43
Target	80.0%	80.0%				
Capitol Corridor	87.8%	89.1%	87.4%	87.9%	27	31
Carolinian	54.7%	49.7%	55.1%	47.8%	51	63
Cascades	56.1%	62.7%	51.8%	55.9%	39	40
Downeaster	92.3%	82.0%	87.3%	75.9%	51	35
Empire	80.7%	77.5%	81.9%	74.6%	57	41
Adirondack	77.2%	70.4%	74.6%	67.3%	55	48
Ethan Allen Express	92.1%	87.6%	89.2%	79.7%	36	31
Maple Leaf	71.0%	65.0%	70.7%	63.7%	59	48
New York - Albany	92.5%	89.1%	92.1%	84.8%	40	36
New York - Niagara Falls	68.7%	70.2%	66.8%	61.2%	67	41
Heartland Flyer	77.6%	58.4%	71.4%	41.3%	38	46
Hiawatha	83.5%	95.2%	88.9%	94.7%	47	40
Hoosier	74.3%	80.4%	77.2%	81.3%	75	47
Illinois	64.1%	68.4%	63.2%	64.4%	43	44
Carl Sandburg / Illinois Zephyr	81.3%	87.1%	82.9%	84.2%	47	47
Illini / Saluki	37.5%	37.4%	27.6%	25.8%	45	46
Lincoln Service	69.8%	75.9%	73.5%	74.4%	40	42
Michigan	57.2%	64.1%	47.4%	51.6%	67	42
Blue Water	65.3%	74.4%	53.1%	58.9%	96	44
Pere Marquette	77.4%	83.5%	76.3%	76.2%	56	38
Wolverine	52.5%	58.8%	40.1%	44.0%	59	42
Missouri	84.0%	82.7%	81.0%	80.0%	46	44
Pacific Surfliner	74.0%	78.1%	70.6%	73.8%	48	45
Pennsylvanian	79.2%	71.5%	81.0%	69.8%	39	46
Piedmont	89.4%	74.1%	83.3%	64.4%	32	40
San Joaquins	69.2%	72.1%	59.8%	64.6%	44	41
Vermont	80.4%	69.6%	80.7%	73.2%	71	46
Long-Distance Routes	47.9%	43.3%	52.6%	43.2%	88	99
Target	80.0%	80.0%				
Auto Train	87.1%	72.7%	75.7%	61.3%	81	114
California Zephyr	32.9%	46.4%	42.8%	45.2%	140	109
Capitol Ltd	42.5%	35.4%	39.7%	22.9%	95	104
Cardinal	60.8%	53.7%	79.4%	55.6%	32	75
City Of New Orleans	59.0%	53.0%	72.5%	67.4%	53	64
Coast Starlight	42.3%	54.1%	41.1%	55.4%	89	88
Crescent	28.7%	28.1%	31.5%	24.2%	100	135
Empire Builder	59.9%	44.4%	66.8%	42.8%	69	124
Lake Shore Ltd	48.9%	41.7%	55.8%	32.8%	73	87
Palmetto	68.8%	59.5%	74.0%	57.6%	43	58
Silver Meteor	60.6%	48.5%	58.3%	42.5%	52	84
Silver Star	38.8%	36.6%	30.8%	29.5%	78	89
Southwest Chief	55.9%	42.0%	57.4%	37.9%	99	101
Sunset Ltd	16.4%	24.9%	26.2%	37.0%	156	134
Texas Eagle	43.4%	35.7%	44.2%	34.0%	70	106

The numbers included in this document are preliminary and are for informational purposes only.

Northeast Regional: Roanoke includes all trains between Roanoke and points on the NEC; Richmond/Newport News/Norfolk includes all trains between these locations and points on the NEC.

* Acela Express on time performance target is 90.0%

** Excludes on time Customers

Host Railroad Responsible Delays

Code	Code Description	Explanation
CTI	Commuter Train Interference	Delays for meeting or following commuter trains
DCS	Signal Delays	Signal failure or All Other signal delays, wayside defect-detector false-alarms, defective road crossing protection, efficiency tests, drawbridge stuck open
DMW	Maintenance of Way	Maintenance of Way delays including holds for track repairs or MW foreman to clear
DSR	Slow Order Delays	Temporary slow orders, except heat or cold orders
DTR	Detour	Delays from detours
FTI	Freight Train Interference	Delays from freight trains
PTI	Passenger Train Interference	Delays for meeting or following All Other passenger trains
RTE	Routing	Routing-dispatching delays including diversions, late track bulletins, etc.

Amtrak Responsible Delays

Code	Code Description	Explanation
ADA	Passenger Related	All delays related to disabled passengers, wheel chair lifts, guide dogs, etc.
CAR	Car Failure	Mechanical failure on all types of cars
CCR	Cab Car Failure	Mechanical failure on Cab Cars
CON	Hold for Connection	Holding for connections from All Other trains or buses.
ENG	Locomotive Failure	Mechanical failure on engines.
HLD	Passenger Related	All delays related to passengers, checked-baggage, large groups, etc.
INJ	Injury Delay	Delay due to injured passengers or employees.
ITI	Initial Terminal Delay	Delay at initial terminal due to late arriving inbound trains causing late release of equipment.
OTH	Miscellaneous Delays	Lost-on-run, heavy trains, unable to make normal speed, etc.
SVS	Servicing	All switching and servicing delays
SYS	Crew & System	Delays related to crews including lateness, lone-engineer delays

Third-Party Delays

Code	Code Description	Explanation
CUI	Customs	U.S. and Canadian customs delays; Immigration-related delays
DBS	Debris	Debris strikes
MBO	Drawbridge Openings	Movable bridge openings for marine traffic where no bridge failure is involved
NOD	Unused Recovery Time	Wait for departure time
POL	Police-Related	Police/fire department holds on right-of-way or on-board trains
TRS	Trespassers	Trespasser incidents including road crossing accidents, trespasser / animal strikes, vehicle stuck on track ahead, bridge strikes
WTR	Weather-Related	All severe-weather delays, landslides or washouts, earthquake-related delays, heat or cold orders

*These delay codes are applicable to Off-NEC routes only.