



# Host Railroad Report

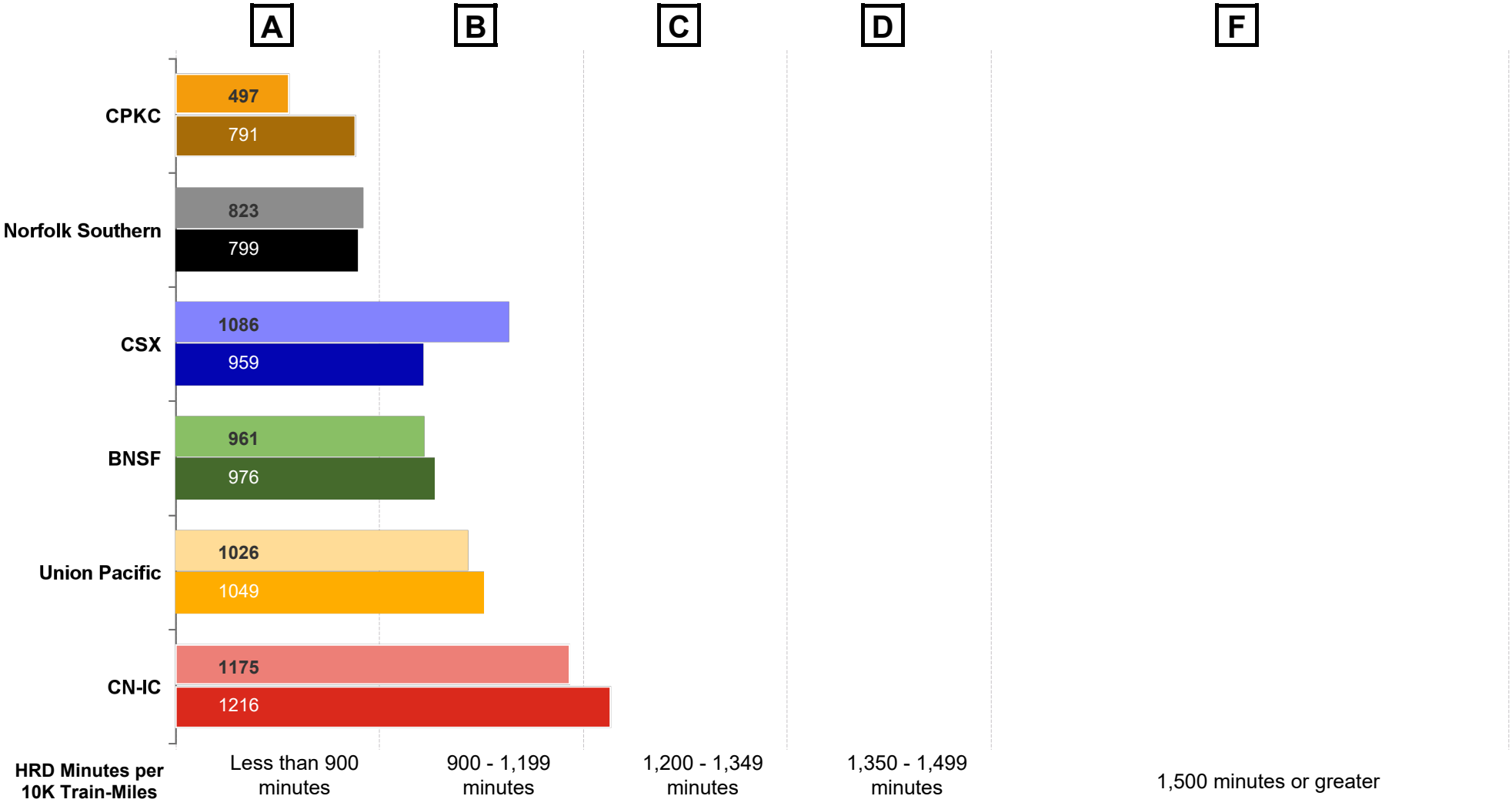
Amtrak Train Performance on Host Railroads

Data through February 2026

# Host Railroad Report Card Update

## Current Month and 1 Year Snapshot

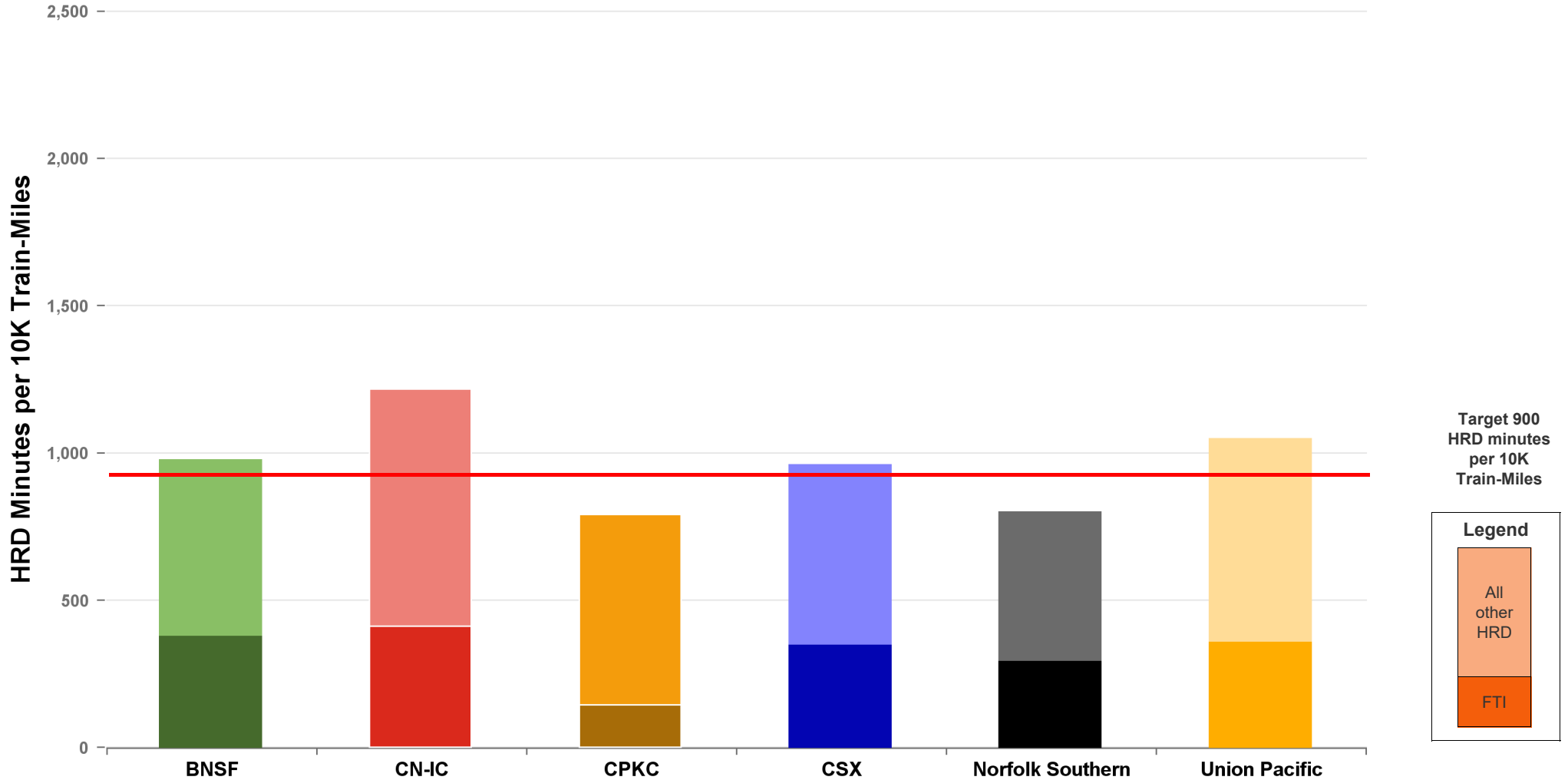
A monthly update of the Host Railroad Report Card, which grades the six major host railroads based on host responsible delay (HRD) minutes per 10,000 train-miles for the current month (lighter shade) and the most recent 12 months.



# Total Host-Responsible Delays

## 1 Year Snapshot

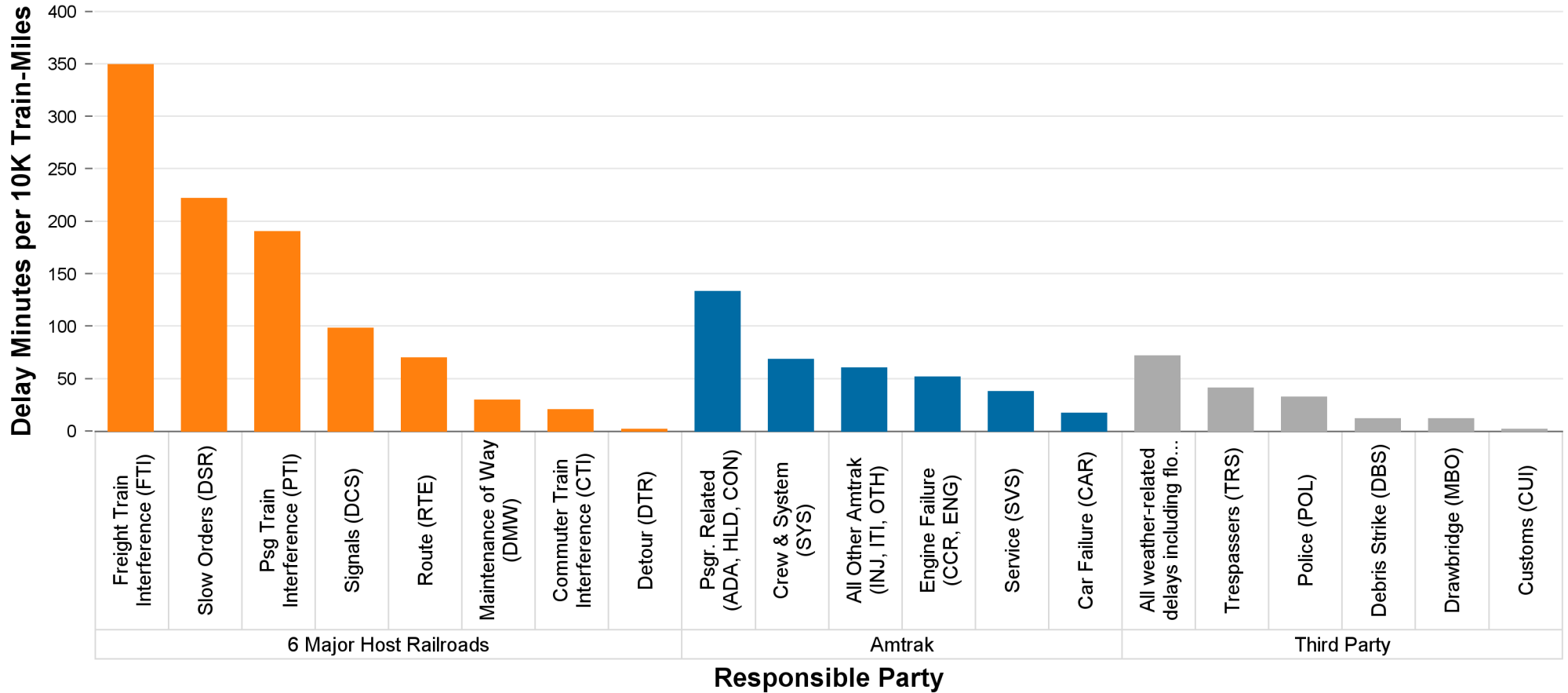
Total host-responsible delay (HRD) minutes per 10,000 train-miles incurred by Amtrak trains on the six major host railroads, with delays attributable to freight train interference (FTI) shaded.



# Delays to Amtrak Trains by Responsible Party

## 1 Year Snapshot

Delay minutes per 10,000 train-miles on the six major host railroads categorized by delay type and responsible party.

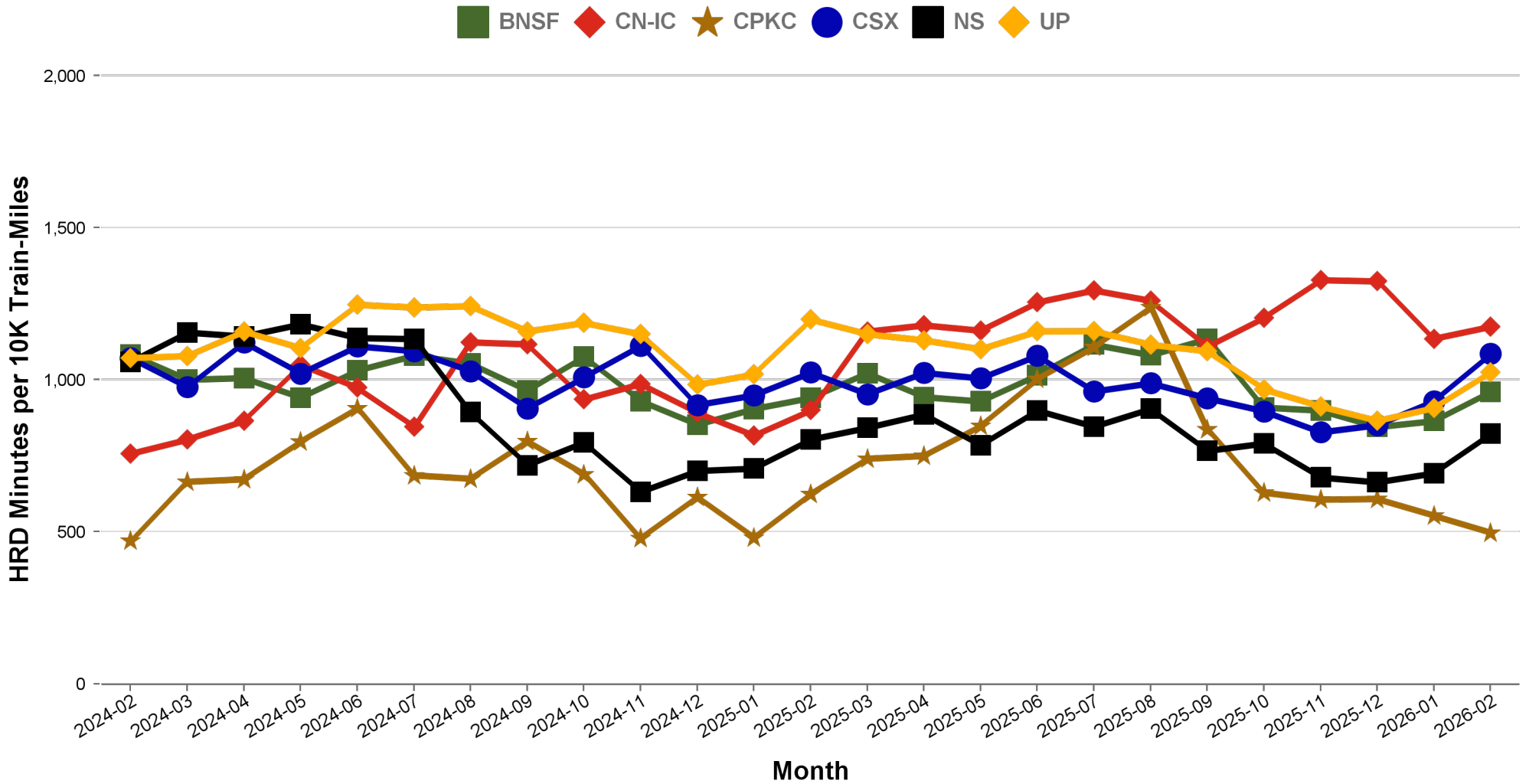


Responsible Party	6 Major Host Railroads	Amtrak	Third Party
Delay Minutes per 10K Train-Miles	976	366	170
Percentage of Total Delays	64.5%	24.2%	11.3%

# Total Host-Responsible Delays

## 2 Year Snapshot

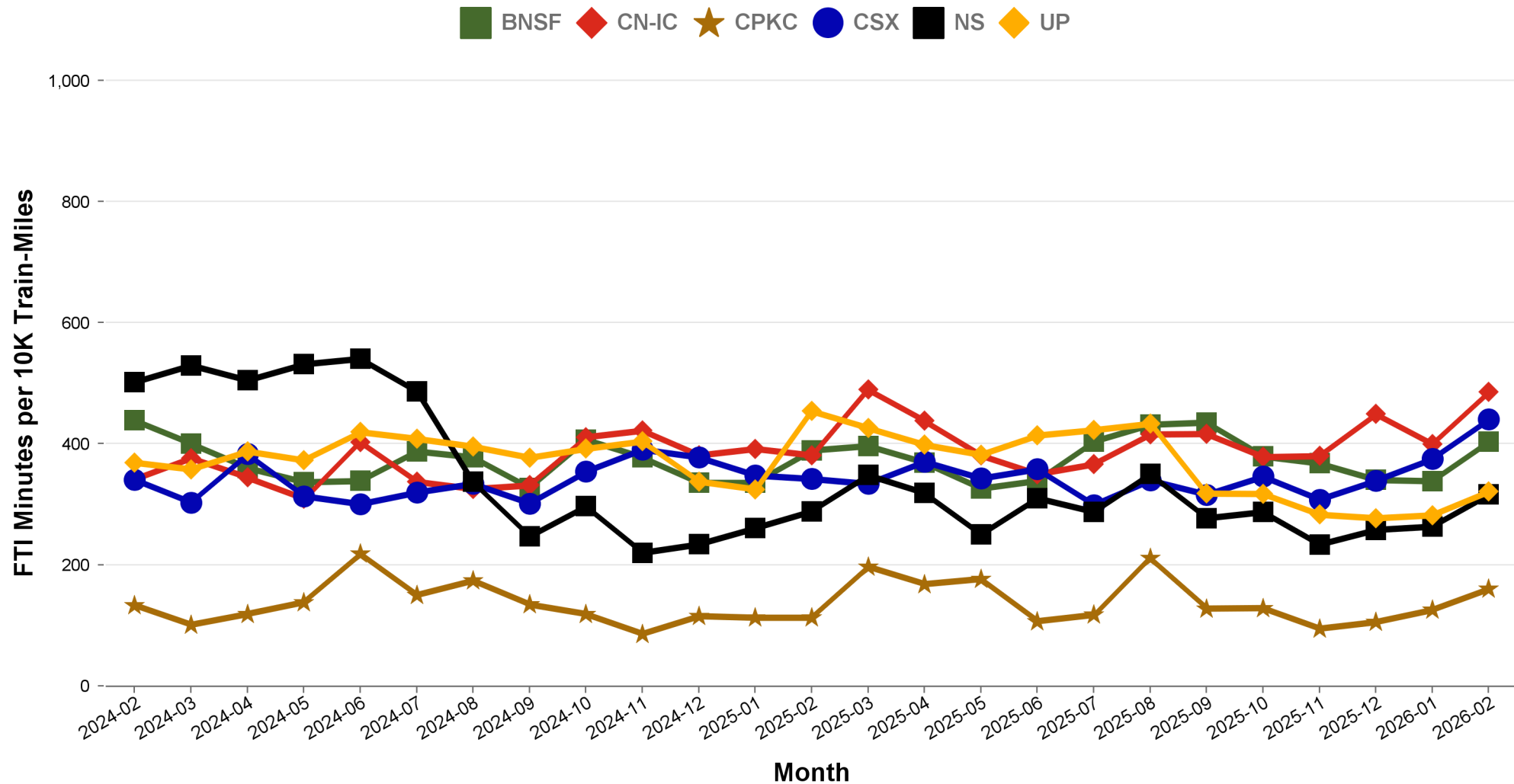
Total host-responsible delay (HRD) minutes per 10,000 train-miles incurred by Amtrak trains on each of the six major host railroads for the most recent two years.



# Freight Train Interference Delays

## 2 Year Snapshot

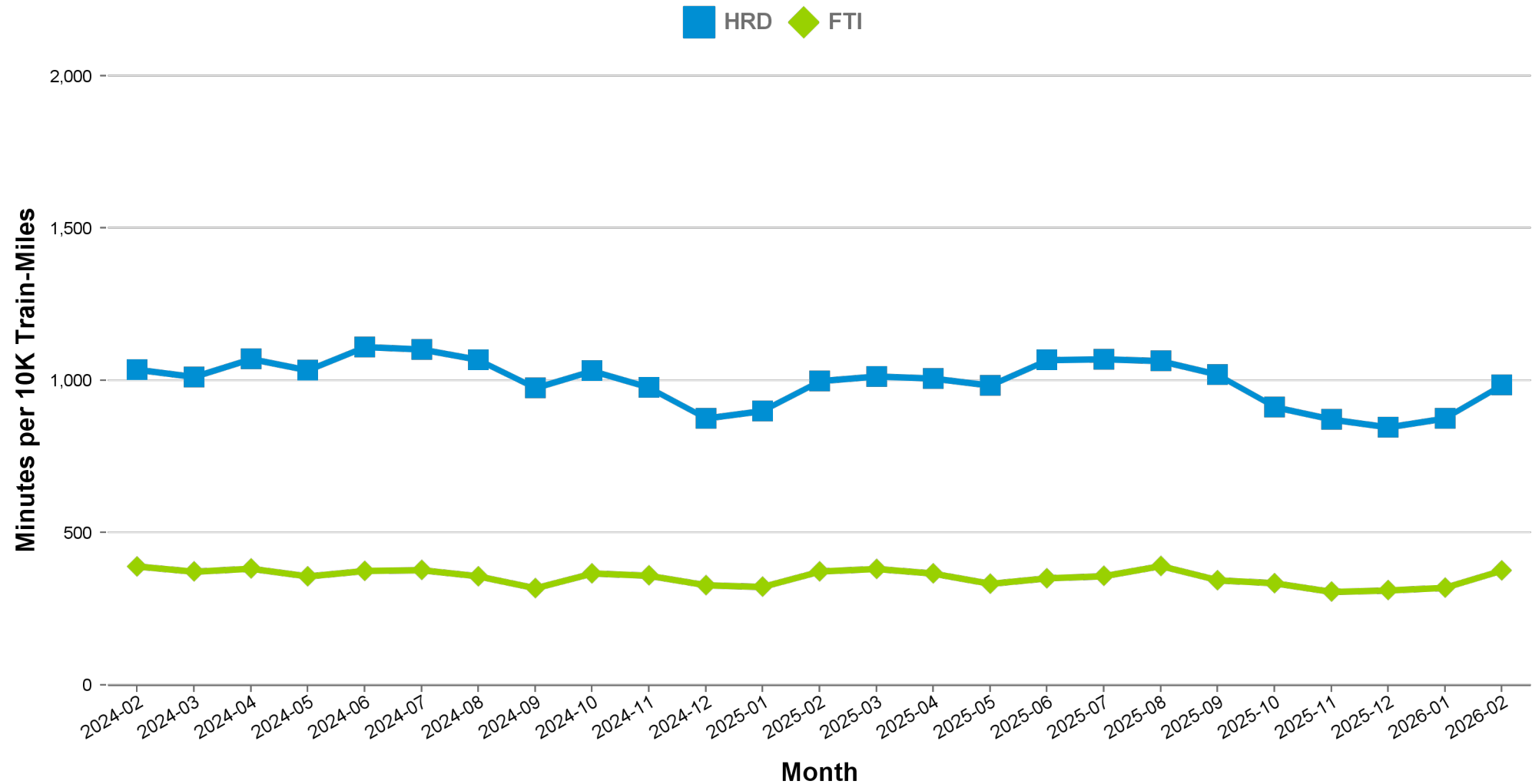
Total delay minutes per 10,000 train-miles attributable to freight train interference (FTI) incurred by Amtrak trains on each of the six major host railroads for the most recent two years.



# Aggregated Host Railroad Performance Trend

## 2 Year Snapshot

Total host-responsible delay (HRD) and freight interference (FTI) minutes per 10,000 train-miles incurred by Amtrak trains, aggregated for the six major host railroads for the most recent two years.



## Minutes of Delay per 10K Train Miles by Host for February 2026

Host	Service	Total Host Responsible Delays		Largest Two Delay Categories - Current Month				Route Miles
		Current Month	Most Recent 12 Months	#1		#2		
Target		900	900					
BNSF	California Zephyr	769	813	FTI	346	DSR	139	1027
	Carl Sandburg / Illinois Zephyr	760	774	FTI	350	CTI	123	257
	Cascades	1428	1031	DSR	380	FTI	370	317
	Coast Starlight	1305	1067	DSR	360	FTI	316	158
	Empire Builder	729	785	FTI	489	DSR	131	2147
	Gold Runner	839	1216	PTI	391	FTI	205	284
	Heartland Flyer	1600	2093	DSR	963	FTI	468	236
	Pacific Surfliner	1722	1122	FTI	797	DSR	354	22
	Southwest Chief	964	907	FTI	478	DSR	237	2206
	Sunset Ltd	694	1190	DSR	383	FTI	145	190
	Texas Eagle	1190	1670	DSR	828	FTI	306	116
CN-IC	Blue Water	1246	947	FTI	660	DSR	468	159
	City Of New Orleans	1140	1161	FTI	520	DSR	300	930
	Illini / Saluki	768	827	DSR	259	FTI	226	304
	Lincoln / Missouri	2619	2547	FTI	1072	DSR	817	35
	Lincoln Service	1800	2055	FTI	1219	DSR	287	35
	Texas Eagle	2233	2262	FTI	1624	DSR	255	35
	Wolverine	3159	3252	DSR	2463	RTE	235	27
CPKC	Adirondack	703	1129	PTI	349	FTI	97	178
	Borealis	744	913	FTI	276	PTI	155	376
	Empire Builder	343	866	FTI	173	DCS	57	384
	Ethan Allen Express	1691	1789	PTI	1291	FTI	180	60
	Hiawatha	117	177	DCS	50	FTI	28	53
CSX	Auto Train	1113	1138	FTI	458	DSR	254	898
	Cardinal	934	841	FTI	487	DCS	177	703
	Carolinian	2118	1535	PTI	506	DSR	492	295
	Downeaster	1311	771	PTI	367	FTI	302	107
	Floridian	982	959	FTI	348	DSR	211	1413
	Lake Shore Ltd	1026	755	FTI	585	RTE	142	741
	Maple Leaf	1022	822	FTI	674	DCS	169	298
	Mardi Gras Service	2680	2084	FTI	1694	PTI	547	137
	New York - Niagara Falls	821	701	FTI	492	RTE	117	296
	Palmetto	1022	965	PTI	304	FTI	299	659
	Pere Marquette	185	318	DCS	108	DSR	56	135
	Richmond / Newport News / Norfolk	997	1157	FTI	248	PTI	163	189
	Silver Meteor	849	811	FTI	365	PTI	149	1152
NS	Blue Water	1403	1848	FTI	814	DCS	257	39
	Cardinal	911	1357	FTI	362	PTI	272	79
	Carolinian	604	629	PTI	262	DCS	138	202
	Crescent	757	877	FTI	335	DSR	154	1141
	Floridian	927	922	FTI	517	RTE	176	518
	Lake Shore Ltd	991	944	FTI	576	RTE	195	339
	Pennsylvanian	728	634	FTI	239	RTE	202	249
	Pere Marquette	1189	1476	FTI	624	PTI	197	39
	Piedmont	866	642	PTI	305	DSR	236	173
	Richmond / Newport News / Norfolk	329	384	DCS	90	RTE	81	81
	Roanoke	650	502	PTI	317	FTI	169	216
	Wolverine	1586	1768	FTI	958	DCS	360	39
UP	California Zephyr	744	940	FTI	332	DSR	159	1381
	Capitol Corridor	861	618	PTI	342	DSR	219	171
	Cascades	1392	1448	DSR	486	FTI	415	125
	Coast Starlight	1268	1294	DSR	378	PTI	359	1162
	Gold Runner	1270	1168	DSR	467	PTI	316	88
	Lincoln / Missouri	901	954	FTI	394	PTI	256	502
	Lincoln Service	988	953	FTI	375	PTI	337	231
	Missouri	584	977	FTI	329	PTI	126	271
	Pacific Surfliner	1193	1026	PTI	572	DCS	281	174
	Sunset Ltd	1007	1187	FTI	448	DSR	206	1784
	Texas Eagle	1275	1412	FTI	734	DSR	226	1073

# Minutes of Delay per 10K Train Miles by Host for February 2026

Host	Service	Total Host Responsible Delays		Largest Two Delay Categories - Current Month				Route Miles
		Current Month	Most Recent 12 Months	#1		#2		
<b>Target</b>		<b>900</b>	<b>900</b>					
Amtrak	Adirondack	630	494	PTI	285	FTI	178	100
	Blue Water	118	283	PTI	48	DCS	46	99
	Ethan Allen Express	388	474	DCS	185	PTI	121	100
	Maple Leaf	346	652	RTE	162	DCS	125	109
	New York - Albany	486	461	DCS	280	PTI	69	81
	New York - Niagara Falls	353	452	DCS	129	PTI	100	109
	Wolverine	288	452	PTI	143	DCS	110	99
BBrRR	Cardinal	<b>1094</b>	<b>1600</b>	PTI	555	FTI	507	132
CN-Canada	Adirondack	<b>4259</b>	<b>3247</b>	DMW	1304	DSR	1014	49
Fla DOT	Floridian	<b>1288</b>	<b>1072</b>	CTI	1081	DSR	85	70
	Silver Meteor	<b>1737</b>	<b>1104</b>	CTI	945	DCS	330	70
FR	Auto Train	<b>3022</b>	<b>4101</b>	CTI	2295	PTI	273	16
	Floridian	<b>2074</b>	<b>2483</b>	CTI	794	DSR	784	61
	Silver Meteor	<b>2129</b>	<b>2418</b>	PTI	763	DSR	597	61
MADOT	Springfield Shuttles	318	300	DCS	187	FTI	88	36
	Vermonters	365	313	DSR	152	DCS	148	50
MBTA	Downeaster	<b>1131</b>	835	DCS	769	PTI	156	38
Metra	Borealis	671	<b>1484</b>	CTI	255	DCS	194	33
	Empire Builder	<b>1836</b>	<b>2664</b>	CTI	1553	DCS	150	29
	Hiawatha	<b>1641</b>	<b>2123</b>	CTI	1136	DCS	163	29
MIDOT	Blue Water	242	325	PTI	242		-	22
	Wolverine	504	664	PTI	407	RTE	70	134
MNRR	Acela	<b>1804</b>	<b>1526</b>	DSR	1206	CTI	391	56
	Adirondack	<b>1800</b>	<b>1319</b>	CTI	1334	RTE	426	64
	Ethan Allen Express	<b>1416</b>	<b>1546</b>	CTI	1133	RTE	177	64
	Lake Shore Ltd	<b>1090</b>	<b>1122</b>	CTI	733	RTE	160	64
	Maple Leaf	<b>976</b>	<b>959</b>	CTI	751	RTE	196	64
	New York - Albany	<b>948</b>	<b>1014</b>	CTI	685	RTE	103	64
	New York - Niagara Falls	698	<b>1201</b>	CTI	519	RTE	83	64
	Richmond / Newport News / Norfolk	<b>1715</b>	<b>1549</b>	DSR	1056	CTI	494	56
	Vermonters	<b>2416</b>	<b>2252</b>	DSR	1215	CTI	1085	56
NECR	Vermonters	546	712	DSR	437	FTI	50	192
NMDOT	Southwest Chief	<b>2290</b>	<b>2150</b>	CTI	1595	PTI	386	80
SCRRA	Coast Starlight	<b>1757</b>	<b>1536</b>	PTI	976	DCS	375	48
	Pacific Surfliner	<b>946</b>	<b>933</b>	CTI	358	PTI	288	95
SDNRR	Pacific Surfliner	<b>1062</b>	<b>1110</b>	PTI	447	CTI	382	60
Sounder	Cascades	883	<b>1009</b>	PTI	588	CTI	215	20
	Coast Starlight	<b>2946</b>	<b>2509</b>	PTI	1786	CTI	821	20
TRE	Texas Eagle	787	<b>1065</b>	PTI	353	CTI	195	33
VTR	Ethan Allen Express	22	<b>1042</b>	DCS	12	DMW	5	91

The numbers included in this document are preliminary and are for informational purposes only.

Excludes hosts with fewer than 15 route miles.

Delays on the Amtrak-owned portion of the Northeast Corridor are shown in a separate report, with tighter delay standards.

Northeast Regional: Roanoke includes all trains between Roanoke and points on the NEC; Richmond / Newport News / Norfolk includes all trains between these locations and points on the NEC.

## Minutes of Delay per 10K Train Miles by Service for February 2026

Service		Host	Total Host Responsible Delays		Largest Two Delay Categories - Current Month				Route Miles
			Current	Most	#1	#2			
<b>Target</b>			<b>900</b>	<b>900</b>					
<b>Acela</b>									
Acela		MNRR	<b>1804</b>	<b>1526</b>	DSR	1206	CTI	391	56
<b>All Other NEC Corridor Routes</b>									
Northeast Regional	Richmond / Newport News / Norfolk	CSX	<b>997</b>	<b>1157</b>	FTI	248	PTI	163	189
		NS	329	384	DCS	90	RTE	81	81
		MNRR	<b>1715</b>	<b>1549</b>	DSR	1056	CTI	494	56
	Roanoke	NS	650	502	PTI	317	FTI	169	216
	Springfield Shuttles	MADOT	318	300	DCS	187	FTI	88	36

# Minutes of Delay per 10K Train Miles by Service for February 2026

Service	Host	Total Host Responsible Delays		Largest Two Delay Categories - Current Month				Route Miles	
		Current	Most	#1	#2				
<b>Target</b>		<b>900</b>	<b>900</b>						
<b>Non-NEC Corridor Routes</b>									
Borealis	CPKC	744	913	FTI	276	PTI	155	376	
	Metra	671	1484	CTI	255	DCS	194	33	
Capitol Corridor	UP	861	618	PTI	342	DSR	219	171	
Carolinian	CSX	2118	1535	PTI	506	DSR	492	295	
	NS	604	629	PTI	262	DCS	138	202	
Cascades	BNSF	1428	1031	DSR	380	FTI	370	317	
	UP	1392	1448	DSR	486	FTI	415	125	
	Sounder	883	1009	PTI	588	CTI	215	20	
Downeaster	CSX	1311	771	PTI	367	FTI	302	107	
	MBTA	1131	835	DCS	769	PTI	156	38	
Empire	Adirondack	CPKC	703	1129	PTI	349	FTI	97	178
		Amtrak	630	494	PTI	285	FTI	178	100
		CN-Canada	4259	3247	DMW	1304	DSR	1014	49
		MNRR	1800	1319	CTI	1334	RTE	426	64
	Ethan Allen Express	CPKC	1691	1789	PTI	1291	FTI	180	60
		Amtrak	388	474	DCS	185	PTI	121	100
		MNRR	1416	1546	CTI	1133	RTE	177	64
		VTR	22	1042	DCS	12	DMW	5	91
	Maple Leaf	CSX	1022	822	FTI	674	DCS	169	298
		Amtrak	346	652	RTE	162	DCS	125	109
		MNRR	976	959	CTI	751	RTE	196	64
	New York - Albany	Amtrak	486	461	DCS	280	PTI	69	81
		MNRR	948	1014	CTI	685	RTE	103	64
	New York - Niagara Falls	CSX	821	701	FTI	492	RTE	117	296
		Amtrak	353	452	DCS	129	PTI	100	109
		MNRR	698	1201	CTI	519	RTE	83	64
Gold Runner	BNSF	839	1216	PTI	391	FTI	205	284	
	UP	1270	1168	DSR	467	PTI	316	88	
Heartland Flyer	BNSF	1600	2093	DSR	963	FTI	468	236	
Hiawatha	CPKC	117	177	DCS	50	FTI	28	53	
	Metra	1641	2123	CTI	1136	DCS	163	29	
Illinois	Carl Sandburg / Illinois Zephyr	BNSF	760	774	FTI	350	CTI	123	257
	Illini / Saluki	CN-IC	768	827	DSR	259	FTI	226	304
	Lincoln Service	CN-IC	1800	2055	FTI	1219	DSR	287	35
		UP	988	953	FTI	375	PTI	337	231
Lincoln / Missouri	CN-IC	2619	2547	FTI	1072	DSR	817	35	
	UP	901	954	FTI	394	PTI	256	502	
Mardi Gras Service	CSX	2680	2084	FTI	1694	PTI	547	137	
Michigan	Blue Water	CN-IC	1246	947	FTI	660	DSR	468	159
		NS	1403	1848	FTI	814	DCS	257	39
		Amtrak	118	283	PTI	48	DCS	46	99
		MIDOT	242	325	PTI	242	-	22	
	Pere Marquette	CSX	185	318	DCS	108	DSR	56	135
		NS	1189	1476	FTI	624	PTI	197	39
	Wolverine	CN-IC	3159	3252	DSR	2463	RTE	235	27
		NS	1586	1768	FTI	958	DCS	360	39
		Amtrak	288	452	PTI	143	DCS	110	99
		MIDOT	504	664	PTI	407	RTE	70	134
Missouri	UP	584	977	FTI	329	PTI	126	271	
Pacific Surfliner	BNSF	1722	1122	FTI	797	DSR	354	22	
	UP	1193	1026	PTI	572	DCS	281	174	
	SCRRA	946	933	CTI	358	PTI	288	95	
	SDNRR	1062	1110	PTI	447	CTI	382	60	
Pennsylvanian	NS	728	634	FTI	239	RTE	202	249	
Piedmont	NS	866	642	PTI	305	DSR	236	173	
Vermont	MADOT	365	313	DSR	152	DCS	148	50	
	MNRR	2416	2252	DSR	1215	CTI	1085	56	
	NECR	546	712	DSR	437	FTI	50	192	

# Minutes of Delay per 10K Train Miles by Service for February 2026

Service	Host	Total Host Responsible Delays		Largest Two Delay Categories - Current Month				Route Miles
		Current	Most	#1	#2			
<b>Target</b>		<b>900</b>	<b>900</b>					
<b>Long-Distance Routes</b>								
Auto Train	CSX	1113	1138	FTI	458	DSR	254	898
	FR	3022	4101	CTI	2295	PTI	273	16
California Zephyr	BNSF	769	813	FTI	346	DSR	139	1027
	UP	744	940	FTI	332	DSR	159	1381
Cardinal	CSX	934	841	FTI	487	DCS	177	703
	NS	911	1357	FTI	362	PTI	272	79
	BBrRR	1094	1600	PTI	555	FTI	507	132
City Of New Orleans	CN-IC	1140	1161	FTI	520	DSR	300	930
Coast Starlight	BNSF	1305	1067	DSR	360	FTI	316	158
	UP	1268	1294	DSR	378	PTI	359	1162
	SCRRA	1757	1536	PTI	976	DCS	375	48
	Sounder	2946	2509	PTI	1786	CTI	821	20
Crescent	NS	757	877	FTI	335	DSR	154	1141
Empire Builder	BNSF	729	785	FTI	489	DSR	131	2147
	CPKC	343	866	FTI	173	DCS	57	384
	Metra	1836	2664	CTI	1553	DCS	150	29
Floridian	CSX	982	959	FTI	348	DSR	211	1413
	NS	927	922	FTI	517	RTE	176	518
	Fla DOT	1288	1072	CTI	1081	DSR	85	70
	FR	2074	2483	CTI	794	DSR	784	61
Lake Shore Ltd	CSX	1026	755	FTI	585	RTE	142	741
	NS	991	944	FTI	576	RTE	195	339
	MNRR	1090	1122	CTI	733	RTE	160	64
Palmetto	CSX	1022	965	PTI	304	FTI	299	659
Silver Meteor	CSX	849	811	FTI	365	PTI	149	1152
	Fla DOT	1737	1104	CTI	945	DCS	330	70
	FR	2129	2418	PTI	763	DSR	597	61
Southwest Chief	BNSF	964	907	FTI	478	DSR	237	2206
	NMDOT	2290	2150	CTI	1595	PTI	386	80
Sunset Ltd	BNSF	694	1190	DSR	383	FTI	145	190
	UP	1007	1187	FTI	448	DSR	206	1784
Texas Eagle	BNSF	1190	1670	DSR	828	FTI	306	116
	CN-IC	2233	2262	FTI	1624	DSR	255	35
	UP	1275	1412	FTI	734	DSR	226	1073
	TRE	787	1065	PTI	353	CTI	195	33

The numbers included in this document are preliminary and are for informational purposes only.

Excludes hosts with fewer than 15 route miles.

Delays on the Amtrak-owned portion of the Northeast Corridor are shown in a separate report, with tighter delay standards.

Northeast Regional: Roanoke includes all trains between Roanoke and points on the NEC; Richmond / Newport News /

Norfolk includes all trains between these locations and points on the NEC.



Service	All-Stations OTP		Customer OTP		Avg Mins Late per Late Rider**	
	Current Month	Most Recent 12 Months	Current Month	Most Recent 12 Months	Current Month	Most Recent 12 Months
<b>Amtrak System</b>	<b>71.7%</b>	<b>75.3%</b>	<b>71.9%</b>	<b>75.1%</b>	<b>57</b>	<b>56</b>
<b>NEC Corridor Routes</b>	<b>69.7%</b>	<b>80.8%</b>	<b>70.2%</b>	<b>78.6%</b>	<b>52</b>	<b>45</b>
<b>Minimum Standard</b>			<b>80.0%</b>	<b>80.0%</b>		
Acela*	55.6%	79.6%	63.0%	78.5%	49	46
Keystone	84.0%	91.1%	84.4%	89.4%	41	35
Northeast Regional	67.7%	77.6%	69.1%	76.2%	53	46
On Spine Northeast Regional	64.5%	79.9%	69.5%	78.9%	56	46
Richmond / Newport News / Norfolk	69.9%	73.6%	67.7%	70.6%	50	45
Roanoke	72.6%	80.3%	70.1%	78.1%	45	51
Springfield Shuttles	69.9%	78.3%	79.5%	85.3%	47	39
<b>Non-NEC Corridor Routes</b>	<b>77.8%</b>	<b>79.9%</b>	<b>77.1%</b>	<b>76.5%</b>	<b>44</b>	<b>45</b>
<b>Minimum Standard</b>			<b>80.0%</b>	<b>80.0%</b>		
Borealis	90.0%	71.0%	85.9%	62.2%	96	47
Capitol Corridor	85.9%	90.7%	84.5%	89.1%	33	36
Carolinian	62.6%	67.1%	64.0%	65.7%	51	50
Cascades	72.0%	75.8%	71.1%	72.1%	41	41
Downeaster	82.8%	85.5%	78.1%	82.7%	37	34
Empire	65.9%	75.6%	68.5%	74.2%	51	45
Adirondack	57.3%	68.3%	46.9%	56.6%	46	48
Berkshire Flyer	-	51.9%	-	49.9%	-	65
Ethan Allen Express	67.4%	69.3%	63.8%	62.9%	50	41
Maple Leaf	53.3%	60.8%	46.7%	57.9%	73	56
New York - Albany	65.4%	84.4%	74.6%	82.1%	43	39
New York - Niagara Falls	76.1%	80.1%	73.7%	77.6%	46	46
Gold Runner	73.2%	68.0%	70.1%	62.0%	39	47
Heartland Flyer	75.4%	60.6%	75.2%	48.6%	53	49
Hiawatha	93.4%	89.2%	89.8%	86.1%	39	38
Illinois	70.3%	76.9%	75.8%	74.0%	43	43
Carl Sandburg / Illinois Zephyr	65.6%	78.9%	74.5%	77.9%	34	40
Illini / Saluki	87.7%	81.2%	87.0%	78.9%	48	44
Lincoln Service	59.7%	71.9%	65.9%	69.1%	44	43
Lincoln / Missouri	57.8%	53.8%	52.7%	49.1%	33	52
Mardi Gras Service	86.7%	92.1%	82.9%	87.0%	53	43
Michigan	66.2%	70.7%	79.5%	69.3%	43	51
Blue Water	65.9%	74.3%	78.1%	67.9%	54	52
Pere Marquette	89.3%	86.2%	91.2%	83.8%	84	56
Wolverine	63.3%	67.3%	77.5%	66.5%	36	50
Missouri	89.3%	74.5%	90.2%	69.6%	55	52
Pacific Surfliner	89.3%	87.5%	87.4%	85.9%	46	45
Pennsylvanian	68.8%	79.7%	73.7%	81.2%	81	50
Piedmont	79.8%	82.2%	71.7%	76.6%	35	38
Vermonter	61.5%	73.1%	59.6%	72.1%	37	43
<b>Long-Distance Routes</b>	<b>59.4%</b>	<b>52.8%</b>	<b>63.0%</b>	<b>56.5%</b>	<b>98</b>	<b>95</b>
<b>Minimum Standard</b>			<b>80.0%</b>	<b>80.0%</b>		
Auto Train	67.9%	72.4%	59.3%	58.9%	167	100
California Zephyr	68.2%	54.0%	65.8%	55.6%	106	119
Cardinal	56.4%	52.9%	56.3%	53.0%	71	75
City Of New Orleans	78.5%	54.5%	84.9%	69.2%	142	78
Coast Starlight	63.0%	61.6%	65.1%	66.0%	75	83
Crescent	72.9%	71.3%	75.4%	74.9%	62	68
Empire Builder	66.8%	52.5%	68.7%	54.1%	113	120
Floridian	38.7%	32.0%	42.8%	33.0%	74	103
Lake Shore Ltd	55.9%	65.3%	59.1%	71.4%	95	69
Palmetto	77.7%	70.5%	83.9%	70.3%	69	52
Silver Meteor	48.9%	56.7%	52.4%	55.3%	75	73
Southwest Chief	38.3%	32.3%	36.4%	32.9%	143	125
Sunset Ltd	63.4%	53.6%	72.4%	62.8%	124	94
Texas Eagle	63.1%	46.4%	72.3%	52.4%	90	92

The numbers included in this document are preliminary and are for informational purposes only.

Northeast Regional: Roanoke includes all trains between Roanoke and points on the NEC; Richmond/Newport News/Norfolk includes all trains between these locations and points on the NEC.

\* Acela on-time performance target is 90.0%

\*\* Excludes on-time Customers

### Host Railroad Responsible Delays

Code	Code Description	Explanation
CTI	Commuter Train Interference	Delays for meeting or following commuter trains
DCS	Signal Delays	Signal failure or All Other signal delays, wayside defect-detector false-alarms, defective road crossing protection, efficiency tests, drawbridge stuck open
DMW	Maintenance of Way	Maintenance of Way delays including holds for track repairs or MW foreman to clear
DSR	Slow Order Delays	Temporary slow orders, except heat or cold orders
DTR	Detour	Delays from detours
FTI	Freight Train Interference	Delays from freight trains
PTI	Passenger Train Interference	Delays for meeting or following All Other passenger trains
RTE	Routing	Routing-dispatching delays including diversions, late track bulletins, etc.

### Amtrak Responsible Delays

Code	Code Description	Explanation
ADA	Passenger Related	All delays related to disabled passengers, wheel chair lifts, guide dogs, etc.
CAR	Car Failure	Mechanical failure on all types of cars
CCR	Cab Car Failure	Mechanical failure on Cab Cars
CON	Hold for Connection	Holding for connections from All Other trains or buses.
ENG	Locomotive Failure	Mechanical failure on engines.
HLD	Passenger Related	All delays related to passengers, checked-baggage, large groups, etc.
INJ	Injury Delay	Delay due to injured passengers or employees.
ITI	Initial Terminal Delay	Delay at initial terminal due to late arriving inbound trains causing late release of equipment.
OTH	Miscellaneous Delays	Lost-on-run, heavy trains, unable to make normal speed, etc.
SVS	Servicing	All switching and servicing delays
SYS	Crew & System	Delays related to crews including lateness, lone-engineer delays

### Third-Party Delays

Code	Code Description	Explanation
CUI	Customs	U.S. and Canadian customs delays; Immigration-related delays
DBS	Debris	Debris strikes
MBO	Drawbridge Openings	Movable bridge openings for marine traffic where no bridge failure is involved
NOD	Unused Recovery Time	Wait for departure time
POL	Police-Related	Police/fire department holds on right-of-way or on-board trains
TRS	Trespassers	Trespasser incidents including road crossing accidents, trespasser / animal strikes, vehicle stuck on track ahead, bridge strikes
WTR	Weather-Related	All weather-related delays including floods/washouts, earthquake-related delays, heat or cold orders, slippery rail due to leaves

\*These delay codes are applicable to Off-NEC routes only.