



# Host Railroad Report

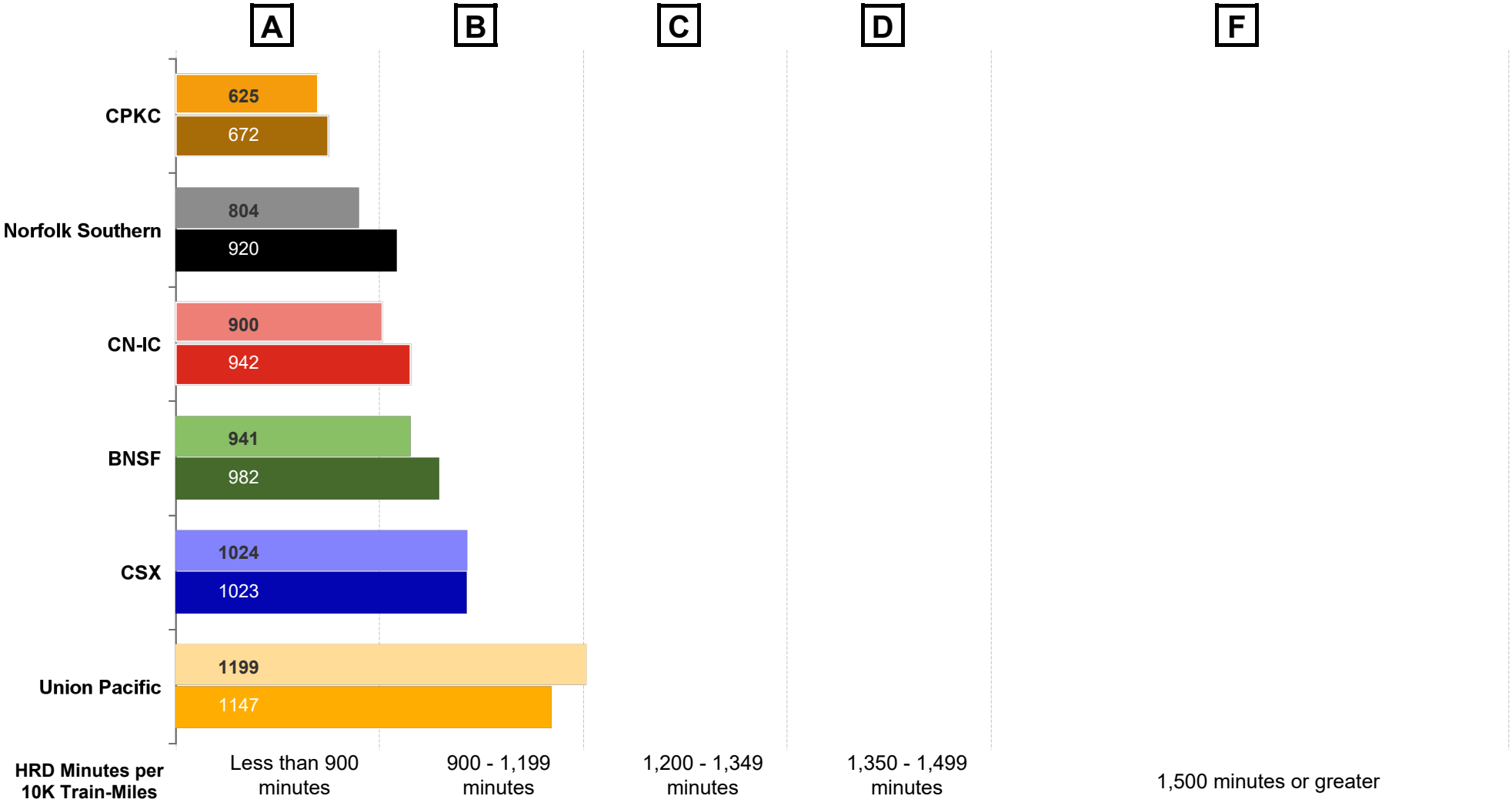
**Amtrak Train Performance on Host Railroads**

**Data through February 2025**

# Host Railroad Report Card Update

## Current Month and 1 Year Snapshot

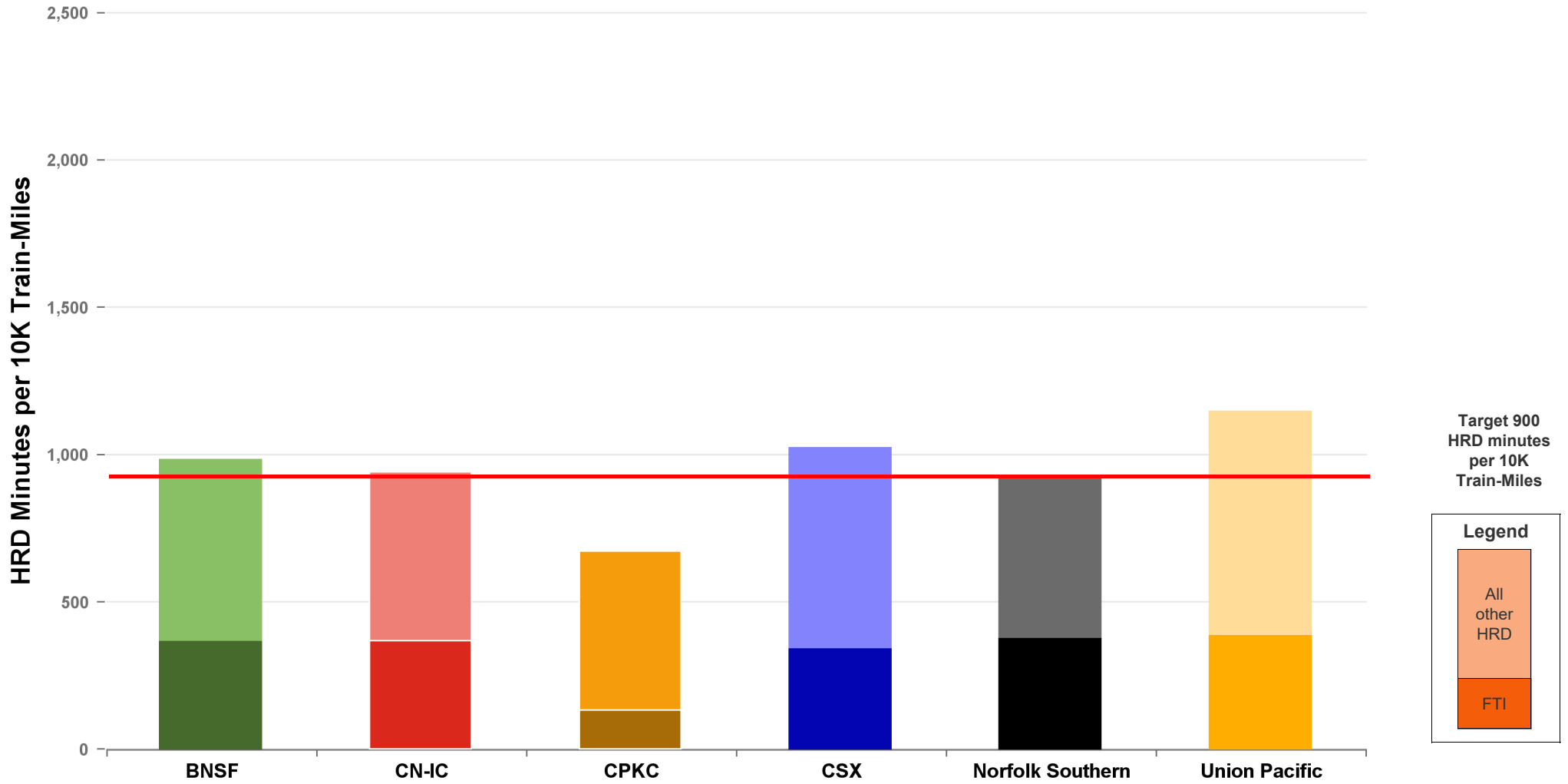
A monthly update of the Host Railroad Report Card, which grades the six major host railroads based on host responsible delay (HRD) minutes per 10,000 train-miles for the current month (lighter shade) and the most recent 12 months.



# Total Host-Responsible Delays

## 1 Year Snapshot

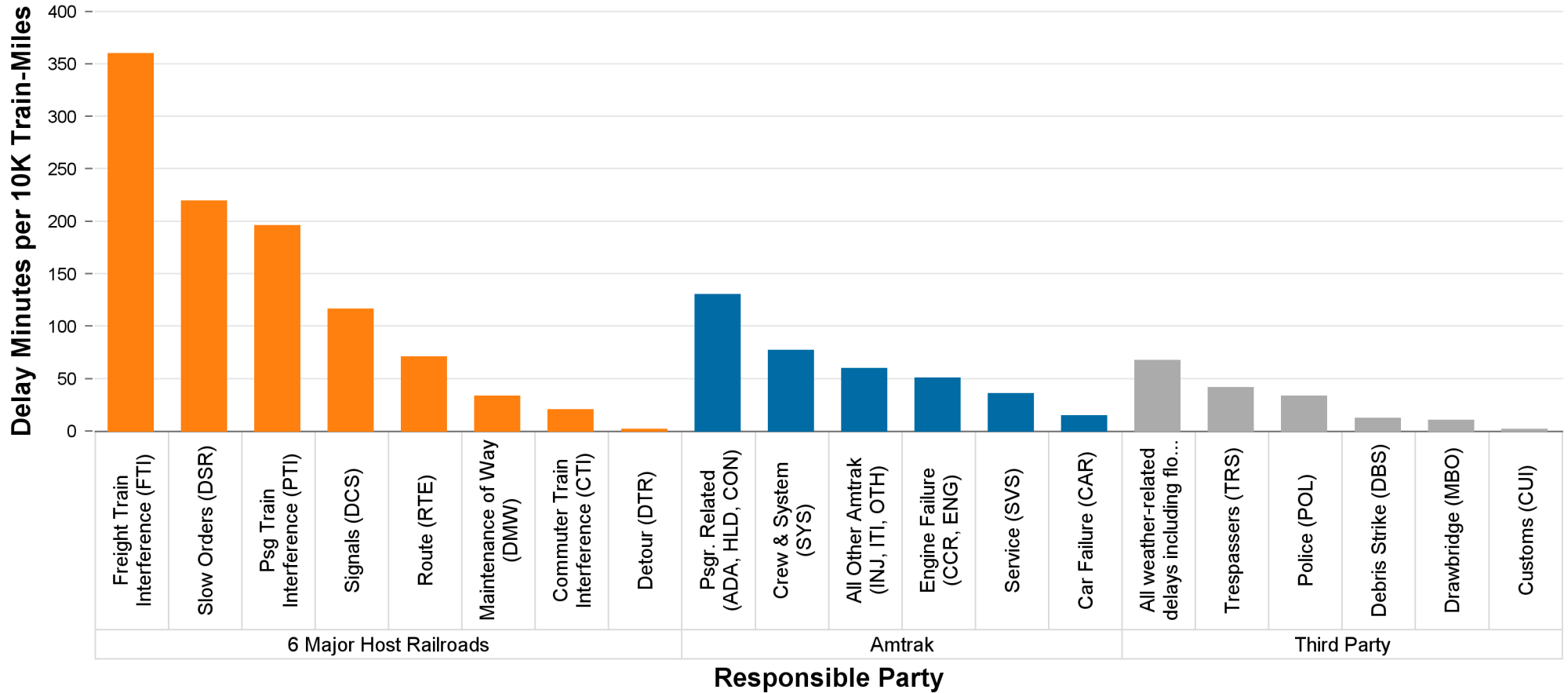
Total host-responsible delay (HRD) minutes per 10,000 train-miles incurred by Amtrak trains on the six major host railroads, with delays attributable to freight train interference (FTI) shaded.



# Delays to Amtrak Trains by Responsible Party

## 1 Year Snapshot

Delay minutes per 10,000 train-miles on the six major host railroads categorized by delay type and responsible party.

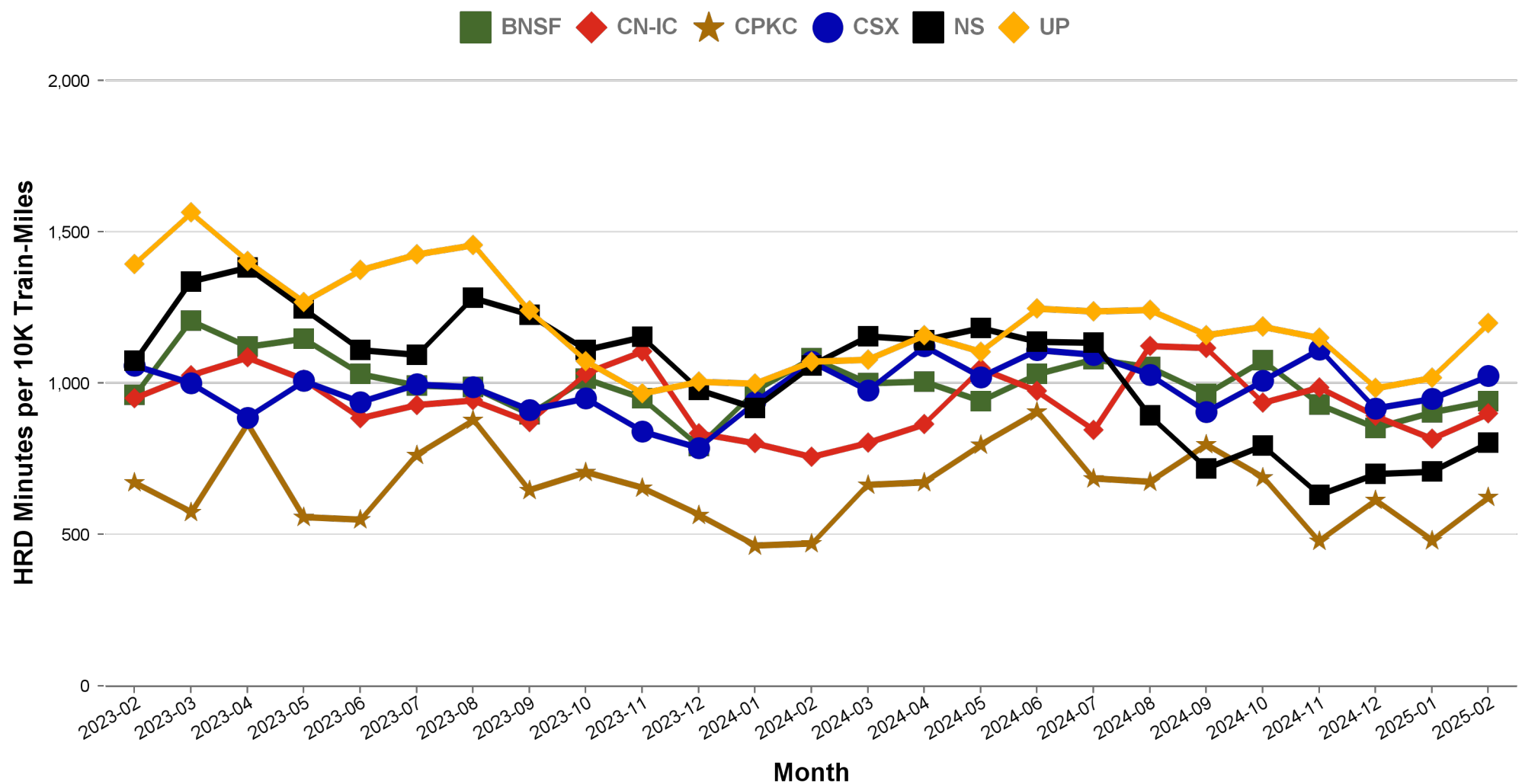


Responsible Party	6 Major Host Railroads	Amtrak	Third Party
Delay Minutes per 10K Train-Miles	1013	370	167
Percentage of Total Delays	65.3%	23.9%	10.8%

# Total Host-Responsible Delays

## 2 Year Snapshot

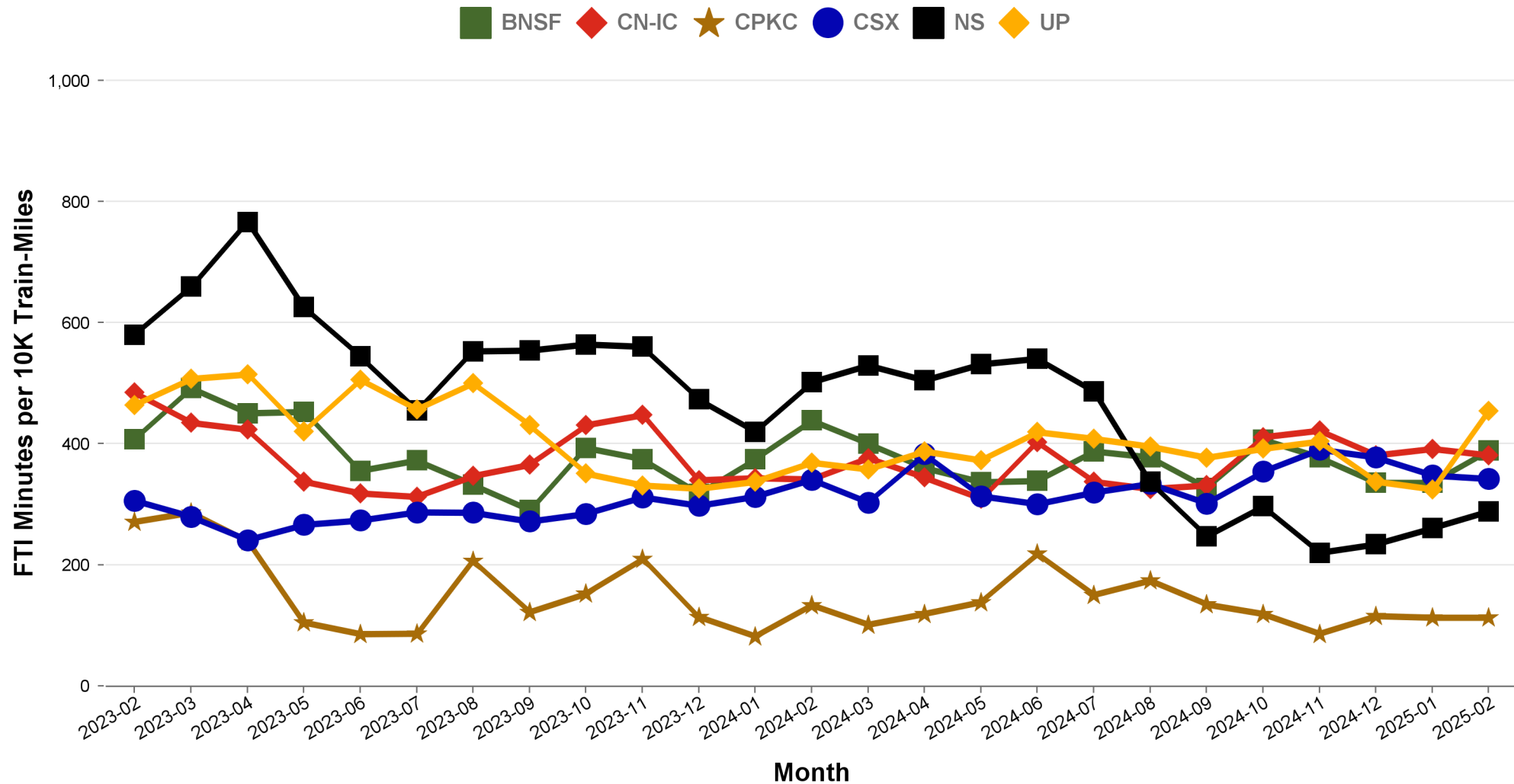
Total host-responsible delay (HRD) minutes per 10,000 train-miles incurred by Amtrak trains on each of the six major host railroads for the most recent two years.



# Freight Train Interference Delays

## 2 Year Snapshot

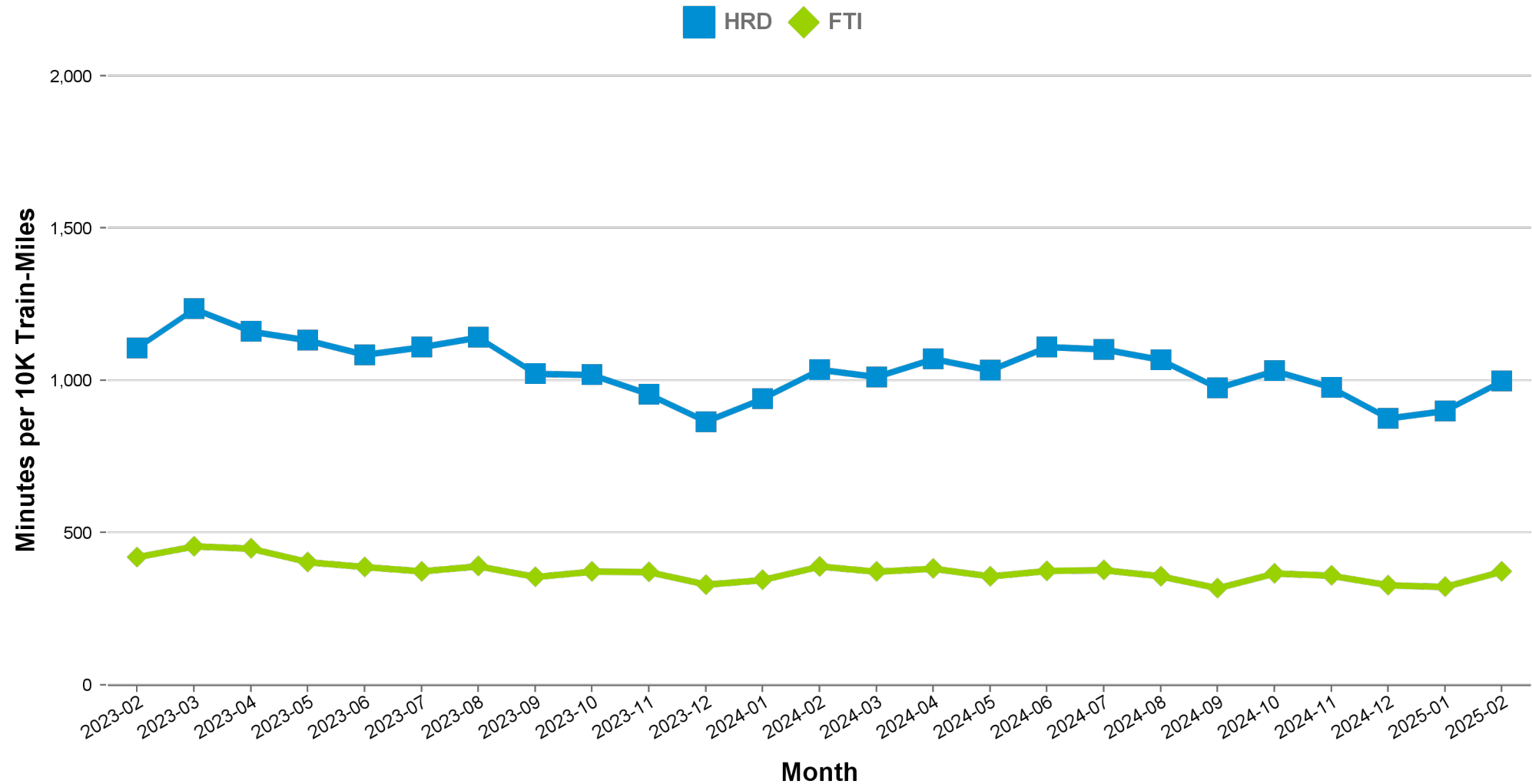
Total delay minutes per 10,000 train-miles attributable to freight train interference (FTI) incurred by Amtrak trains on each of the six major host railroads for the most recent two years.



# Aggregated Host Railroad Performance Trend

## 2 Year Snapshot

Total host-responsible delay (HRD) and freight interference (FTI) minutes per 10,000 train-miles incurred by Amtrak trains, aggregated for the six major host railroads for the most recent two years.



## Minutes of Delay per 10K Train Miles by Host for February 2025

Host	Service	Total Host Responsible Delays		Largest Two Delay Categories - Current Month				Route Miles
		Current Month	Most Recent 12 Months	#1		#2		
<b>Target</b>		<b>900</b>	<b>900</b>					
BNSF	California Zephyr	741	735	FTI	295	DSR	120	1027
	Carl Sandburg / Illinois Zephyr	611	780	DSR	246	FTI	194	257
	Cascades	<b>1154</b>	<b>1315</b>	FTI	355	PTI	264	317
	Coast Starlight	<b>1122</b>	<b>1265</b>	FTI	345	RTE	275	158
	Empire Builder	<b>962</b>	793	FTI	668	DSR	108	2147
	Heartland Flyer	<b>1493</b>	<b>1569</b>	FTI	729	DSR	649	236
	Pacific Surfliner	<b>1158</b>	<b>1641</b>	FTI	335	DCS	299	22
	San Joaquins	<b>1146</b>	<b>1073</b>	PTI	419	FTI	379	284
	Southwest Chief	657	840	FTI	266	DSR	182	2206
	Sunset Ltd	<b>1321</b>	<b>1007</b>	DSR	496	FTI	402	190
Texas Eagle	<b>2051</b>	<b>2476</b>	DSR	1021	FTI	860	116	
CN-IC	Blue Water	722	566	FTI	469	DCS	161	159
	City Of New Orleans	898	839	FTI	339	DSR	133	930
	Illini / Saluki	412	645	FTI	138	PTI	131	304
	Lincoln Service	<b>2004</b>	<b>2176</b>	FTI	1285	DSR	378	35
	Lincoln / Missouri	<b>2463</b>	<b>2778</b>	FTI	1760	DSR	458	35
	Texas Eagle	<b>2228</b>	<b>2171</b>	FTI	1536	DCS	281	35
	Wolverine	<b>2021</b>	<b>2106</b>	DSR	1538	FTI	265	27
	CPKC	Adirondack	<b>1161</b>	<b>1077</b>	PTI	614	DCS	235
Borealis		592	792	PTI	155	FTI	149	376
Empire Builder		567	671	PTI	209	FTI	161	384
Ethan Allen Express		<b>1589</b>	<b>1441</b>	PTI	707	DCS	368	60
Hiawatha		225	255	FTI	72	DCS	61	53
CSX	Auto Train	<b>1359</b>	<b>1368</b>	DSR	457	FTI	385	898
	Capitol Ltd	-	723		-		-	307
	Cardinal	851	813	FTI	355	DSR	318	703
	Carolinian	<b>1293</b>	<b>1700</b>	FTI	341	RTE	282	295
	Downeaster	<b>1339</b>	783	DCS	621	PTI	385	107
	Floridian	<b>1111</b>	<b>1070</b>	DSR	354	FTI	289	1413
	Lake Shore Ltd	806	737	FTI	395	RTE	134	741
	Maple Leaf	<b>911</b>	856	FTI	641	DCS	125	298
	New York - Niagara Falls	661	763	FTI	450	DCS	79	296
	Palmetto	<b>915</b>	<b>1049</b>	FTI	455	PTI	227	659
	Pere Marquette	178	250	FTI	107	DCS	52	135
	Richmond / Newport News / Norfolk	<b>1010</b>	<b>1361</b>	FTI	241	PTI	219	189
	Silver Meteor	<b>954</b>	<b>928</b>	FTI	343	DSR	280	1152
Silver Star	-	<b>1021</b>		-		-	1209	
NS	Blue Water	<b>1542</b>	<b>1690</b>	FTI	565	DCS	353	39
	Capitol Ltd	-	<b>1038</b>		-		-	481
	Cardinal	<b>1059</b>	<b>1381</b>	PTI	357	FTI	301	79
	Carolinian	735	732	PTI	430	FTI	176	202
	Crescent	825	<b>1102</b>	FTI	347	DSR	213	1141
	Floridian	798	753	FTI	372	RTE	188	518
	Lake Shore Ltd	854	<b>955</b>	FTI	405	RTE	172	339
	Pennsylvanian	522	658	FTI	272	RTE	139	249
	Pere Marquette	<b>1097</b>	<b>1288</b>	PTI	409	FTI	317	39
	Piedmont	707	725	PTI	348	FTI	157	173
	Richmond / Newport News / Norfolk	<b>1115</b>	758	DCS	688	DSR	249	81
	Roanoke	630	712	FTI	236	PTI	236	216
	Silver Star	-	613		-		-	28
Wolverine	<b>1417</b>	<b>1708</b>	FTI	695	DCS	241	39	
UP	California Zephyr	<b>1147</b>	<b>1038</b>	DSR	491	FTI	343	1381
	Capitol Corridor	527	565	PTI	244	DCS	112	171
	Cascades	<b>1589</b>	<b>1731</b>	FTI	564	PTI	516	125
	Coast Starlight	<b>1473</b>	<b>1508</b>	FTI	430	DSR	335	1162
	Lincoln Service	<b>1220</b>	<b>1111</b>	FTI	489	PTI	400	231
	Lincoln / Missouri	<b>1028</b>	<b>932</b>	FTI	448	PTI	259	502
	Missouri	<b>991</b>	809	FTI	474	PTI	309	271
	Pacific Surfliner	<b>1044</b>	<b>1278</b>	PTI	498	DCS	309	174
	San Joaquins	<b>958</b>	<b>1274</b>	PTI	385	FTI	285	88
	Sunset Ltd	<b>1565</b>	<b>1290</b>	FTI	1003	DSR	235	1784
	Texas Eagle	<b>1668</b>	<b>1506</b>	FTI	901	DSR	351	1073



## Minutes of Delay per 10K Train Miles by Host for February 2025

Host	Service	Total Host Responsible Delays		Largest Two Delay Categories - Current Month				Route Miles
		Current Month	Most Recent 12 Months	#1		#2		
<b>Target</b>		<b>900</b>	<b>900</b>					
Amtrak	Adirondack	473	524	PTI	159	DSR	125	100
	Blue Water	216	502	PTI	69	DMW	63	99
	Ethan Allen Express	292	354	PTI	94	DSR	92	100
	Floridian	<b>7973</b>	<b>7569</b>	PTI	5814	CTI	872	3
	Maple Leaf	595	351	DCS	222	DSR	159	109
	New York - Albany	370	316	DSR	182	CTI	54	81
	New York - Niagara Falls	354	520	DSR	109	PTI	91	109
	Wolverine	273	696	PTI	217	CTI	16	99
BBrRR	Cardinal	<b>1441</b>	<b>1261</b>	FTI	474	PTI	368	132
CN-Canada	Adirondack	<b>3595</b>	<b>5229</b>	RTE	1470	FTI	671	49
Fla DOT	Floridian	<b>1173</b>	<b>903</b>	CTI	892	FTI	97	70
	Silver Meteor	884	<b>1226</b>	CTI	595	PTI	92	70
	Silver Star	-	<b>1111</b>		-		-	70
FR	Auto Train	<b>5828</b>	<b>4685</b>	CTI	3309	DSR	1775	16
	Floridian	<b>2639</b>	<b>2441</b>	CTI	1046	DSR	862	61
	Silver Meteor	<b>2229</b>	<b>3252</b>	CTI	1034	DSR	533	61
	Silver Star	-	<b>2487</b>		-		-	61
MADOT	Springfield Shuttles	597	624	FTI	266	DSR	228	36
	Vermonteer	673	526	DSR	599	PTI	52	50
MBTA	Downeaster	858	<b>1109</b>	DCS	278	CTI	240	38
Metra	Borealis	<b>1111</b>	<b>1249</b>	CTI	752	DCS	148	33
	Empire Builder	<b>1923</b>	<b>2185</b>	CTI	1677	PTI	154	29
	Hiawatha	<b>1732</b>	<b>1743</b>	CTI	1270	DCS	198	29
MIDOT	Blue Water	766	422	RTE	348	PTI	294	22
	Wolverine	749	644	PTI	604	DCS	96	134
MNRR	Acela	<b>1395</b>	<b>1530</b>	DSR	859	CTI	358	56
	Adirondack	732	<b>1108</b>	CTI	465	RTE	154	64
	Ethan Allen Express	765	<b>1296</b>	CTI	482	RTE	140	64
	Lake Shore Ltd	555	<b>1016</b>	CTI	342	DSR	118	64
	Maple Leaf	760	832	CTI	538	RTE	129	64
	New York - Albany	797	<b>999</b>	CTI	477	DSR	104	64
	New York - Niagara Falls	643	<b>1180</b>	CTI	475	RTE	62	64
	Richmond / Newport News / Norfolk	<b>1603</b>	<b>1595</b>	DSR	771	CTI	555	56
	Vermonteer	<b>1476</b>	<b>2549</b>	CTI	724	DSR	501	56
NECR	Vermonteer	664	<b>918</b>	DSR	481	DCS	137	192
NMDOT	Southwest Chief	<b>1211</b>	<b>2780</b>	CTI	864	DCS	117	80
SCRRA	Coast Starlight	<b>1361</b>	<b>1638</b>	PTI	706	CTI	528	48
	Pacific Surfliner	798	<b>1005</b>	PTI	357	CTI	275	95
SDNRR	Pacific Surfliner	<b>945</b>	<b>1002</b>	CTI	384	PTI	250	60
Sounder	Cascades	795	<b>963</b>	PTI	504	CTI	148	20
	Coast Starlight	<b>2927</b>	<b>2051</b>	PTI	2318	CTI	609	20
TRE	Texas Eagle	494	697	RTE	206	CTI	125	33
VTR	Ethan Allen Express	534	806	DSR	265	RTE	110	91

The numbers included in this document are preliminary and are for informational purposes only. Excludes hosts with fewer than 15 route miles. Delays on the Amtrak-owned portion of the Northeast Corridor are shown in a separate report, with tighter delay standards. Northeast Regional: Roanoke includes all trains between Roanoke and points on the NEC; Richmond / Newport News / Norfolk includes all trains between these locations and points on the NEC.



# Minutes of Delay per 10K Train Miles by Service for February 2025

Service		Host	Total Host Responsible Delays		Largest Two Delay Categories - Current Month				Route Miles
			Current	Most	#1	#2			
<b>Target</b>			<b>900</b>	<b>900</b>					
<b>Acela</b>									
Acela		MNRR	<b>1395</b>	<b>1530</b>	DSR	859	CTI	358	56
<b>All Other NEC Corridor Routes</b>									
Northeast Regional	Richmond / Newport News / Norfolk	CSX	<b>1010</b>	<b>1361</b>	FTI	241	PTI	219	189
		NS	<b>1115</b>	758	DCS	688	DSR	249	81
		MNRR	<b>1603</b>	<b>1595</b>	DSR	771	CTI	555	56
	Roanoke	NS	630	712	FTI	236	PTI	236	216
	Springfield Shuttles	MADOT	597	624	FTI	266	DSR	228	36
<b>Non-NEC Corridor Routes</b>									
Borealis		CPKC	592	792	PTI	155	FTI	149	376
		Metra	<b>1111</b>	<b>1249</b>	CTI	752	DCS	148	33
Capitol Corridor		UP	527	565	PTI	244	DCS	112	171
Carolinian		CSX	<b>1293</b>	<b>1700</b>	FTI	341	RTE	282	295
		NS	735	732	PTI	430	FTI	176	202
Cascades		BNSF	<b>1154</b>	<b>1315</b>	FTI	355	PTI	264	317
		UP	<b>1589</b>	<b>1731</b>	FTI	564	PTI	516	125
		Sounder	795	<b>963</b>	PTI	504	CTI	148	20
Downeaster		CSX	<b>1339</b>	783	DCS	621	PTI	385	107
		MBTA	858	<b>1109</b>	DCS	278	CTI	240	38
Empire	Adirondack	CPKC	<b>1161</b>	<b>1077</b>	PTI	614	DCS	235	178
		Amtrak	473	524	PTI	159	DSR	125	100
		CN-Canada	<b>3595</b>	<b>5229</b>	RTE	1470	FTI	671	49
		MNRR	732	<b>1108</b>	CTI	465	RTE	154	64
	Ethan Allen Express	CPKC	<b>1589</b>	<b>1441</b>	PTI	707	DCS	368	60
		Amtrak	292	354	PTI	94	DSR	92	100
		MNRR	765	<b>1296</b>	CTI	482	RTE	140	64
		VTR	534	806	DSR	265	RTE	110	91
	Maple Leaf	CSX	<b>911</b>	856	FTI	641	DCS	125	298
		Amtrak	595	351	DCS	222	DSR	159	109
		MNRR	760	832	CTI	538	RTE	129	64
	New York - Albany	Amtrak	370	316	DSR	182	CTI	54	81
		MNRR	797	<b>999</b>	CTI	477	DSR	104	64
	New York - Niagara Falls	CSX	661	763	FTI	450	DCS	79	296
		Amtrak	354	520	DSR	109	PTI	91	109
		MNRR	643	<b>1180</b>	CTI	475	RTE	62	64
Heartland Flyer		BNSF	<b>1493</b>	<b>1569</b>	FTI	729	DSR	649	236
Hiawatha		CPKC	225	255	FTI	72	DCS	61	53
		Metra	<b>1732</b>	<b>1743</b>	CTI	1270	DCS	198	29
Illinois	Carl Sandburg / Illinois Zephyr	BNSF	611	780	DSR	246	FTI	194	257
	Illini / Saluki	CN-IC	412	645	FTI	138	PTI	131	304
	Lincoln Service	CN-IC	<b>2004</b>	<b>2176</b>	FTI	1285	DSR	378	35
		UP	<b>1220</b>	<b>1111</b>	FTI	489	PTI	400	231
Lincoln / Missouri		CN-IC	<b>2463</b>	<b>2778</b>	FTI	1760	DSR	458	35
		UP	<b>1028</b>	<b>932</b>	FTI	448	PTI	259	502
Michigan	Blue Water	CN-IC	722	566	FTI	469	DCS	161	159
		NS	<b>1542</b>	<b>1690</b>	FTI	565	DCS	353	39
		Amtrak	216	502	PTI	69	DMW	63	99
		MIDOT	766	422	RTE	348	PTI	294	22
	Pere Marquette	CSX	178	250	FTI	107	DCS	52	135
		NS	<b>1097</b>	<b>1288</b>	PTI	409	FTI	317	39
	Wolverine	CN-IC	<b>2021</b>	<b>2106</b>	DSR	1538	FTI	265	27
		NS	<b>1417</b>	<b>1708</b>	FTI	695	DCS	241	39
		Amtrak	273	696	PTI	217	CTI	16	99
		MIDOT	749	644	PTI	604	DCS	96	134
Missouri		UP	<b>991</b>	809	FTI	474	PTI	309	271
Pacific Surfliner		BNSF	<b>1158</b>	<b>1641</b>	FTI	335	DCS	299	22
		UP	<b>1044</b>	<b>1278</b>	PTI	498	DCS	309	174
		SCRRA	798	<b>1005</b>	PTI	357	CTI	275	95
		SDNRR	<b>945</b>	<b>1002</b>	CTI	384	PTI	250	60
Pennsylvanian		NS	522	658	FTI	272	RTE	139	249
Piedmont		NS	707	725	PTI	348	FTI	157	173
San Joaquins		BNSF	<b>1146</b>	<b>1073</b>	PTI	419	FTI	379	284
		UP	<b>958</b>	<b>1274</b>	PTI	385	FTI	285	88
Vermont		MADOT	673	526	DSR	599	PTI	52	50
		MNRR	<b>1476</b>	<b>2549</b>	CTI	724	DSR	501	56
		NECR	664	<b>918</b>	DSR	481	DCS	137	192

# Minutes of Delay per 10K Train Miles by Service for February 2025

Service	Host	Total Host Responsible Delays		Largest Two Delay Categories - Current Month				Route Miles
		Current	Most	#1	#2			
<b>Target</b>		<b>900</b>	<b>900</b>					
<b>Long-Distance Routes</b>								
Auto Train	CSX	<b>1359</b>	<b>1368</b>	DSR	457	FTI	385	898
	FR	<b>5828</b>	<b>4685</b>	CTI	3309	DSR	1775	16
California Zephyr	BNSF	741	735	FTI	295	DSR	120	1027
	UP	<b>1147</b>	<b>1038</b>	DSR	491	FTI	343	1381
Capitol Ltd	CSX	-	723		-		-	307
	NS	-	<b>1038</b>		-		-	481
Cardinal	CSX	851	813	FTI	355	DSR	318	703
	NS	<b>1059</b>	<b>1381</b>	PTI	357	FTI	301	79
	BBrRR	<b>1441</b>	<b>1261</b>	FTI	474	PTI	368	132
City Of New Orleans	CN-IC	898	839	FTI	339	DSR	133	930
Coast Starlight	BNSF	<b>1122</b>	<b>1265</b>	FTI	345	RTE	275	158
	UP	<b>1473</b>	<b>1508</b>	FTI	430	DSR	335	1162
	SCRRA	<b>1361</b>	<b>1638</b>	PTI	706	CTI	528	48
	Sounder	<b>2927</b>	<b>2051</b>	PTI	2318	CTI	609	20
Crescent	NS	825	<b>1102</b>	FTI	347	DSR	213	1141
Empire Builder	BNSF	<b>962</b>	793	FTI	668	DSR	108	2147
	CPKC	567	671	PTI	209	FTI	161	384
	Metra	<b>1923</b>	<b>2185</b>	CTI	1677	PTI	154	29
Floridian	CSX	<b>1111</b>	<b>1070</b>	DSR	354	FTI	289	1413
	NS	798	753	FTI	372	RTE	188	518
	Amtrak	<b>7973</b>	<b>7569</b>	PTI	5814	CTI	872	3
	Fla DOT	<b>1173</b>	<b>903</b>	CTI	892	FTI	97	70
	FR	<b>2639</b>	<b>2441</b>	CTI	1046	DSR	862	61
Lake Shore Ltd	CSX	806	737	FTI	395	RTE	134	741
	NS	854	<b>955</b>	FTI	405	RTE	172	339
	MNRR	555	<b>1016</b>	CTI	342	DSR	118	64
Palmetto	CSX	<b>915</b>	<b>1049</b>	FTI	455	PTI	227	659
Silver Meteor	CSX	<b>954</b>	<b>928</b>	FTI	343	DSR	280	1152
	Fla DOT	884	<b>1226</b>	CTI	595	PTI	92	70
	FR	<b>2229</b>	<b>3252</b>	CTI	1034	DSR	533	61
Silver Star	CSX	-	<b>1021</b>		-		-	1209
	NS	-	613		-		-	28
	Fla DOT	-	<b>1111</b>		-		-	70
	FR	-	<b>2487</b>		-		-	61
Southwest Chief	BNSF	657	840	FTI	266	DSR	182	2206
	NMDOT	<b>1211</b>	<b>2780</b>	CTI	864	DCS	117	80
Sunset Ltd	BNSF	<b>1321</b>	<b>1007</b>	DSR	496	FTI	402	190
	UP	<b>1565</b>	<b>1290</b>	FTI	1003	DSR	235	1784
Texas Eagle	BNSF	<b>2051</b>	<b>2476</b>	DSR	1021	FTI	860	116
	CN-IC	<b>2228</b>	<b>2171</b>	FTI	1536	DCS	281	35
	UP	<b>1668</b>	<b>1506</b>	FTI	901	DSR	351	1073
	TRE	494	697	RTE	206	CTI	125	33

The numbers included in this document are preliminary and are for informational purposes only.

Excludes hosts with fewer than 15 route miles.

Delays on the Amtrak-owned portion of the Northeast Corridor are shown in a separate report, with tighter delay standards.

Northeast Regional: Roanoke includes all trains between Roanoke and points on the NEC; Richmond / Newport News /

Norfolk includes all trains between these locations and points on the NEC.

# Host Railroad Report - All-Stations and Customer OTP for February 2025

Service	All-Stations OTP		Customer OTP		Avg Mins Late per Late Rider**	
	Current Month	Most Recent 12 Months	Current Month	Most Recent 12 Months	Current Month	Most Recent 12 Months
<b>Amtrak System</b>	<b>74.5%</b>	<b>74.7%</b>	<b>73.7%</b>	<b>72.9%</b>	<b>54</b>	<b>55</b>
<b>NEC Corridor Routes</b>	<b>79.7%</b>	<b>80.1%</b>	<b>76.3%</b>	<b>75.9%</b>	<b>40</b>	<b>44</b>
<b>Minimum Standard</b>			<b>80.0%</b>	<b>80.0%</b>		
Acela*	72.8%	78.5%	71.3%	74.9%	35	36
Keystone	90.6%	91.0%	85.0%	88.1%	33	35
Northeast Regional	77.7%	77.0%	75.7%	73.7%	43	47
On Spine Northeast Regional	82.1%	80.2%	80.8%	77.8%	43	46
Richmond / Newport News / Norfolk	69.3%	69.4%	67.4%	66.2%	43	47
Roanoke	74.6%	75.8%	70.0%	72.1%	40	49
Springfield Shuttles	86.9%	87.2%	87.1%	87.0%	40	39
<b>Non-NEC Corridor Routes</b>	<b>80.4%</b>	<b>79.8%</b>	<b>76.4%</b>	<b>75.2%</b>	<b>46</b>	<b>45</b>
<b>Minimum Standard</b>			<b>80.0%</b>	<b>80.0%</b>		
Borealis	70.4%	67.5%	59.3%	57.0%	59	51
Capitol Corridor	92.7%	91.9%	90.3%	88.9%	36	38
Carolinian	60.4%	50.8%	66.8%	47.7%	64	64
Cascades	66.3%	67.7%	61.6%	58.1%	49	45
Downeaster	78.8%	85.5%	72.1%	77.4%	48	38
Empire	78.4%	80.2%	77.7%	79.9%	40	41
Adirondack	69.1%	78.5%	62.0%	76.4%	40	36
Berkshire Flyer	-	68.0%	-	69.9%	-	44
Ethan Allen Express	80.8%	74.6%	80.3%	70.4%	27	38
Maple Leaf	68.2%	71.8%	66.0%	73.8%	43	45
New York - Albany	87.6%	90.0%	83.6%	87.3%	35	38
New York - Niagara Falls	77.3%	76.2%	75.4%	73.9%	48	45
Heartland Flyer	82.1%	70.1%	78.1%	68.1%	42	44
Hiawatha	87.6%	90.5%	83.3%	86.7%	34	38
Illinois	84.0%	80.1%	77.5%	75.7%	47	46
Carl Sandburg / Illinois Zephyr	91.9%	85.1%	95.3%	85.5%	68	49
Illini / Saluki	93.7%	85.9%	95.5%	86.2%	29	52
Lincoln Service	70.7%	71.8%	57.5%	65.1%	48	44
Lincoln / Missouri	54.7%	54.6%	50.4%	52.0%	45	47
Michigan	69.4%	69.7%	67.1%	72.4%	67	49
Blue Water	65.1%	77.9%	69.4%	73.8%	74	55
Pere Marquette	95.0%	89.1%	91.8%	84.6%	38	38
Wolverine	67.3%	64.8%	61.1%	69.2%	66	48
Missouri	77.1%	78.9%	76.1%	79.5%	49	40
Pacific Surfliner	88.6%	84.6%	87.4%	82.3%	40	42
Pennsylvanian	78.4%	68.8%	78.0%	66.4%	33	42
Piedmont	79.8%	83.5%	65.9%	76.3%	33	39
San Joaquins	77.4%	78.0%	73.9%	74.0%	46	45
Vermonteer	70.2%	68.2%	69.0%	66.5%	43	46
<b>Long-Distance Routes</b>	<b>50.0%</b>	<b>51.9%</b>	<b>54.5%</b>	<b>54.6%</b>	<b>99</b>	<b>93</b>
<b>Minimum Standard</b>			<b>80.0%</b>	<b>80.0%</b>		
Auto Train	62.5%	62.1%	39.5%	46.1%	108	120
California Zephyr	45.9%	50.7%	50.2%	54.3%	105	104
Capitol Ltd	-	65.4%	-	70.5%	-	62
Cardinal	52.9%	54.1%	56.6%	55.0%	115	84
City Of New Orleans	63.1%	65.1%	77.7%	79.5%	80	74
Coast Starlight	61.2%	53.9%	67.1%	55.0%	103	89
Crescent	65.1%	58.9%	74.3%	63.3%	66	73
Empire Builder	29.4%	52.3%	41.5%	54.0%	147	109
Floridian	30.2%	33.9%	25.8%	32.2%	95	106
Lake Shore Ltd	67.7%	74.2%	66.3%	74.3%	72	60
Palmetto	57.6%	60.6%	82.4%	60.9%	59	54
Silver Meteor	51.7%	45.6%	47.8%	42.4%	82	85
Silver Star	-	38.1%	-	34.9%	-	85
Southwest Chief	50.7%	33.3%	54.2%	34.4%	88	128
Sunset Ltd	61.5%	52.2%	69.1%	63.1%	201	120
Texas Eagle	48.7%	48.1%	53.7%	53.6%	107	90

The numbers included in this document are preliminary and are for informational purposes only.

Northeast Regional: Roanoke includes all trains between Roanoke and points on the NEC; Richmond/Newport News/Norfolk includes all trains between these locations and points on the NEC.

\* Acela on-time performance target is 90.0%

\*\* Excludes on-time Customers



### Host Railroad Responsible Delays

Code	Code Description	Explanation
CTI	Commuter Train Interference	Delays for meeting or following commuter trains
DCS	Signal Delays	Signal failure or All Other signal delays, wayside defect-detector false-alarms, defective road crossing protection, efficiency tests, drawbridge stuck open
DMW	Maintenance of Way	Maintenance of Way delays including holds for track repairs or MW foreman to clear
DSR	Slow Order Delays	Temporary slow orders, except heat or cold orders
DTR	Detour	Delays from detours
FTI	Freight Train Interference	Delays from freight trains
PTI	Passenger Train Interference	Delays for meeting or following All Other passenger trains
RTE	Routing	Routing-dispatching delays including diversions, late track bulletins, etc.

### Amtrak Responsible Delays

Code	Code Description	Explanation
ADA	Passenger Related	All delays related to disabled passengers, wheel chair lifts, guide dogs, etc.
CAR	Car Failure	Mechanical failure on all types of cars
CCR	Cab Car Failure	Mechanical failure on Cab Cars
CON	Hold for Connection	Holding for connections from All Other trains or buses.
ENG	Locomotive Failure	Mechanical failure on engines.
HLD	Passenger Related	All delays related to passengers, checked-baggage, large groups, etc.
INJ	Injury Delay	Delay due to injured passengers or employees.
ITI	Initial Terminal Delay	Delay at initial terminal due to late arriving inbound trains causing late release of equipment.
OTH	Miscellaneous Delays	Lost-on-run, heavy trains, unable to make normal speed, etc.
SVS	Servicing	All switching and servicing delays
SYS	Crew & System	Delays related to crews including lateness, lone-engineer delays

### Third-Party Delays

Code	Code Description	Explanation
CUI	Customs	U.S. and Canadian customs delays; Immigration-related delays
DBS	Debris	Debris strikes
MBO	Drawbridge Openings	Movable bridge openings for marine traffic where no bridge failure is involved
NOD	Unused Recovery Time	Wait for departure time
POL	Police-Related	Police/fire department holds on right-of-way or on-board trains
TRS	Trespassers	Trespasser incidents including road crossing accidents, trespasser / animal strikes, vehicle stuck on track ahead, bridge strikes
WTR	Weather-Related	All weather-related delays including floods/washouts, earthquake-related delays, heat or cold orders, slippery rail due to leaves

\*These delay codes are applicable to Off-NEC routes only.