



Host Railroad Report

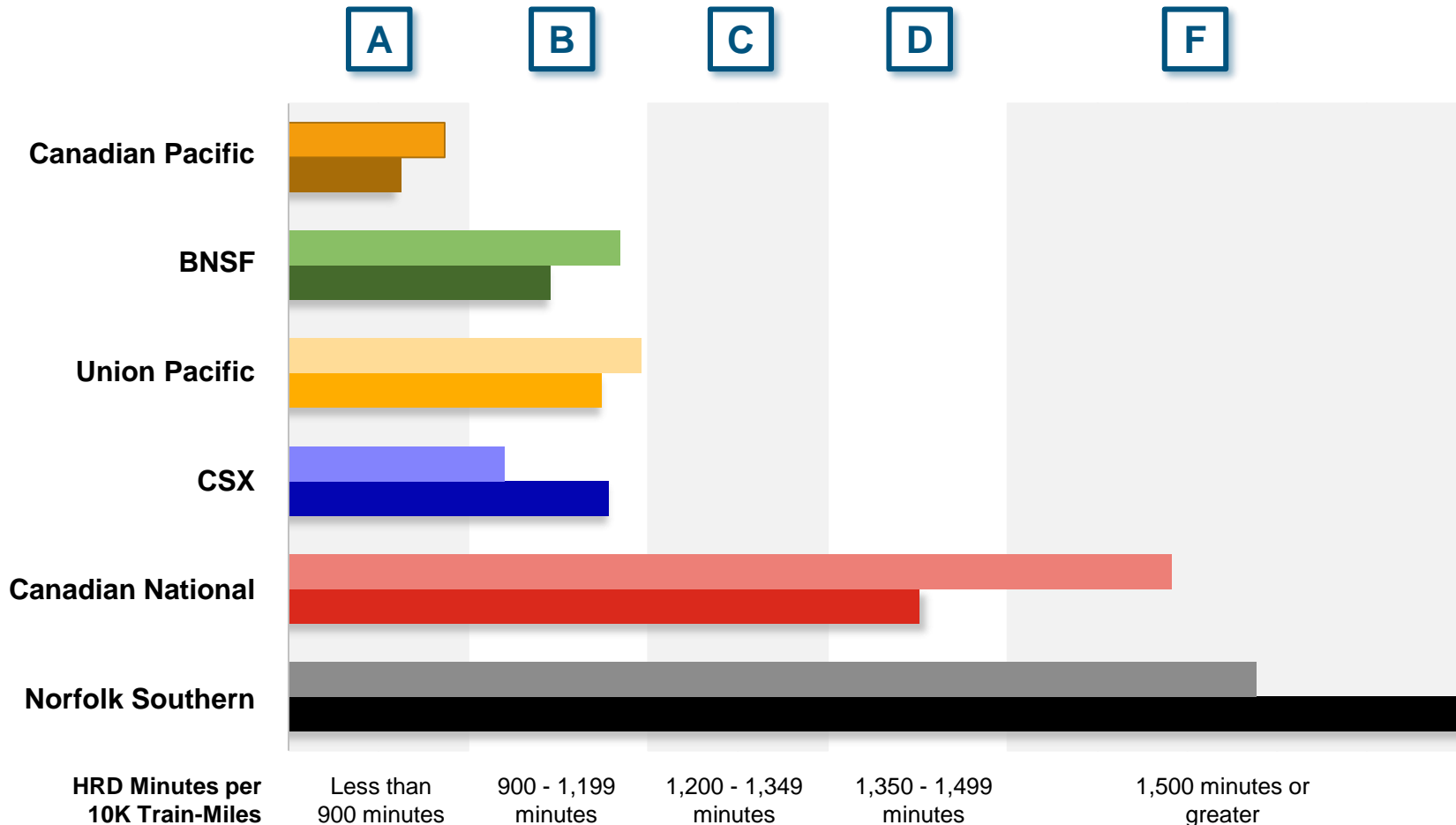
Amtrak Train Performance on Host Railroads

Data through February 2019

Host Railroad Report Card Update

Current Month and 1 Year Snapshot

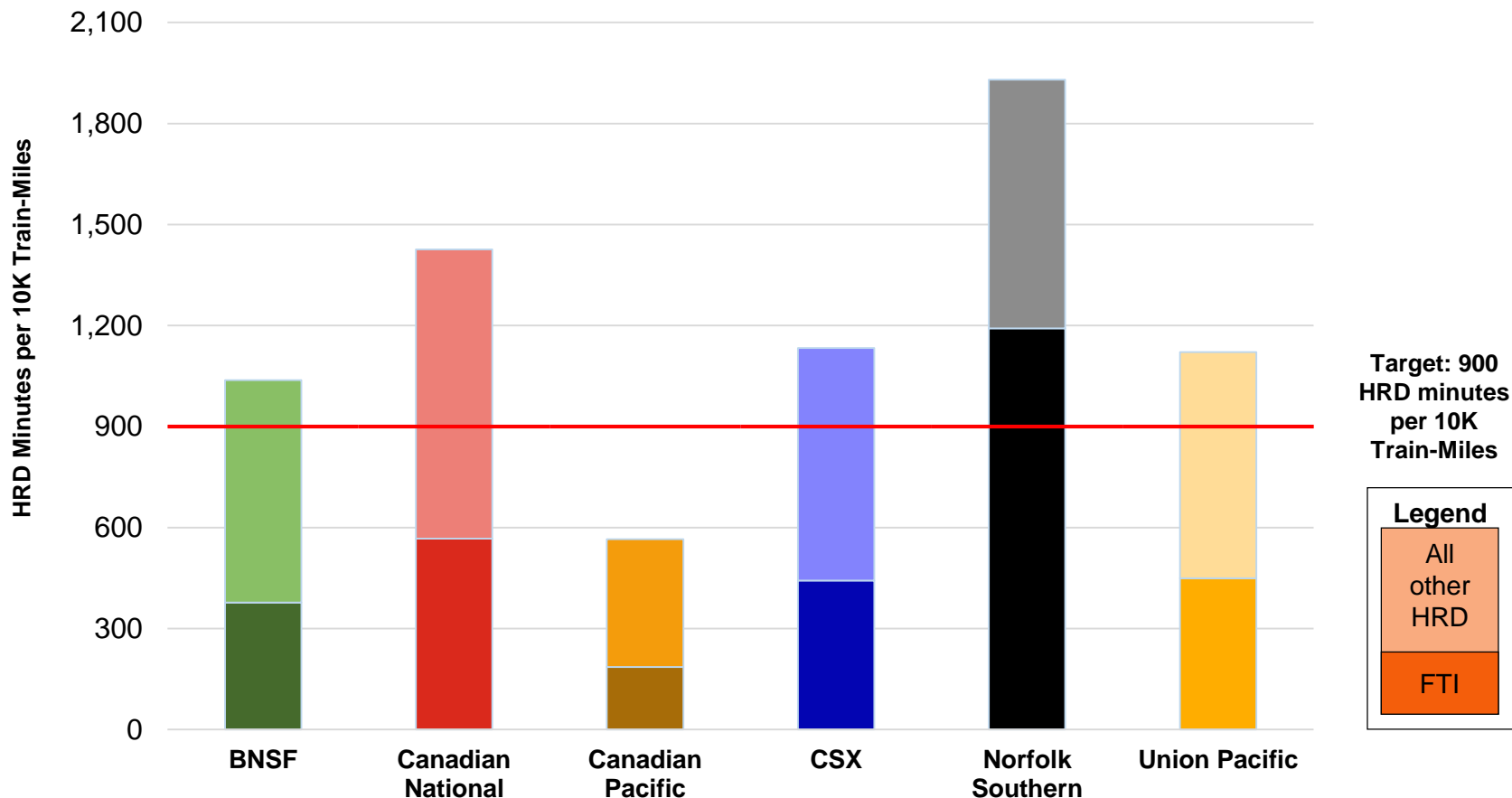
A monthly update of the Host Railroad Report Card, which grades the six major host railroads based on host responsible delay (HRD) minutes per 10,000 train-miles for the current month (lighter shade) and the most recent 12 months.



Total Host-Responsible Delays

1 Year Snapshot

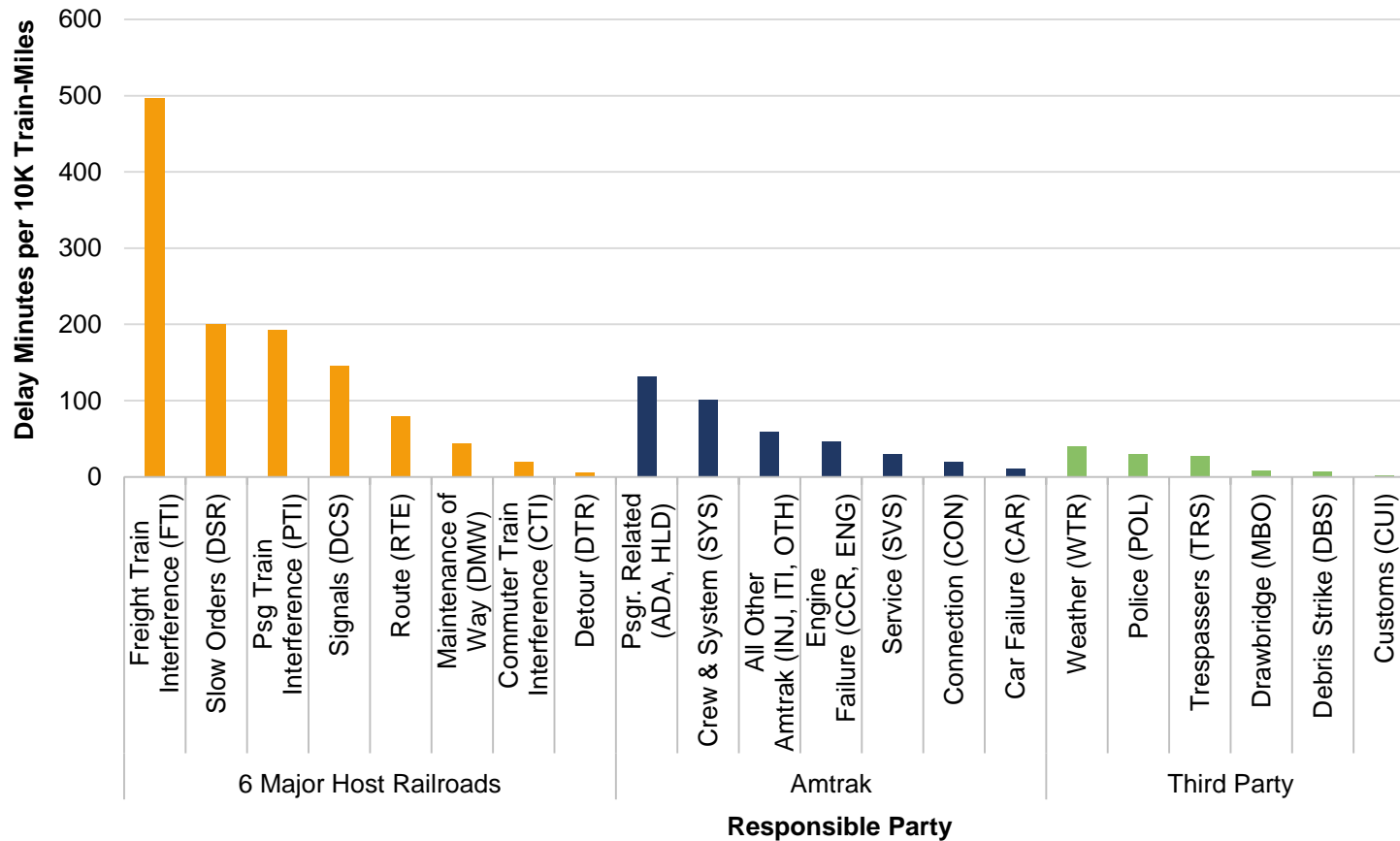
Total host-responsible delay (HRD) minutes per 10,000 train-miles incurred by Amtrak trains on the six major host railroads, with delays attributable to freight train interference (FTI) shaded.



Delays to Amtrak Trains by Responsible Party

1 Year Snapshot

Delay minutes per 10,000 train-miles on the six major host railroads categorized by delay type and responsible party.

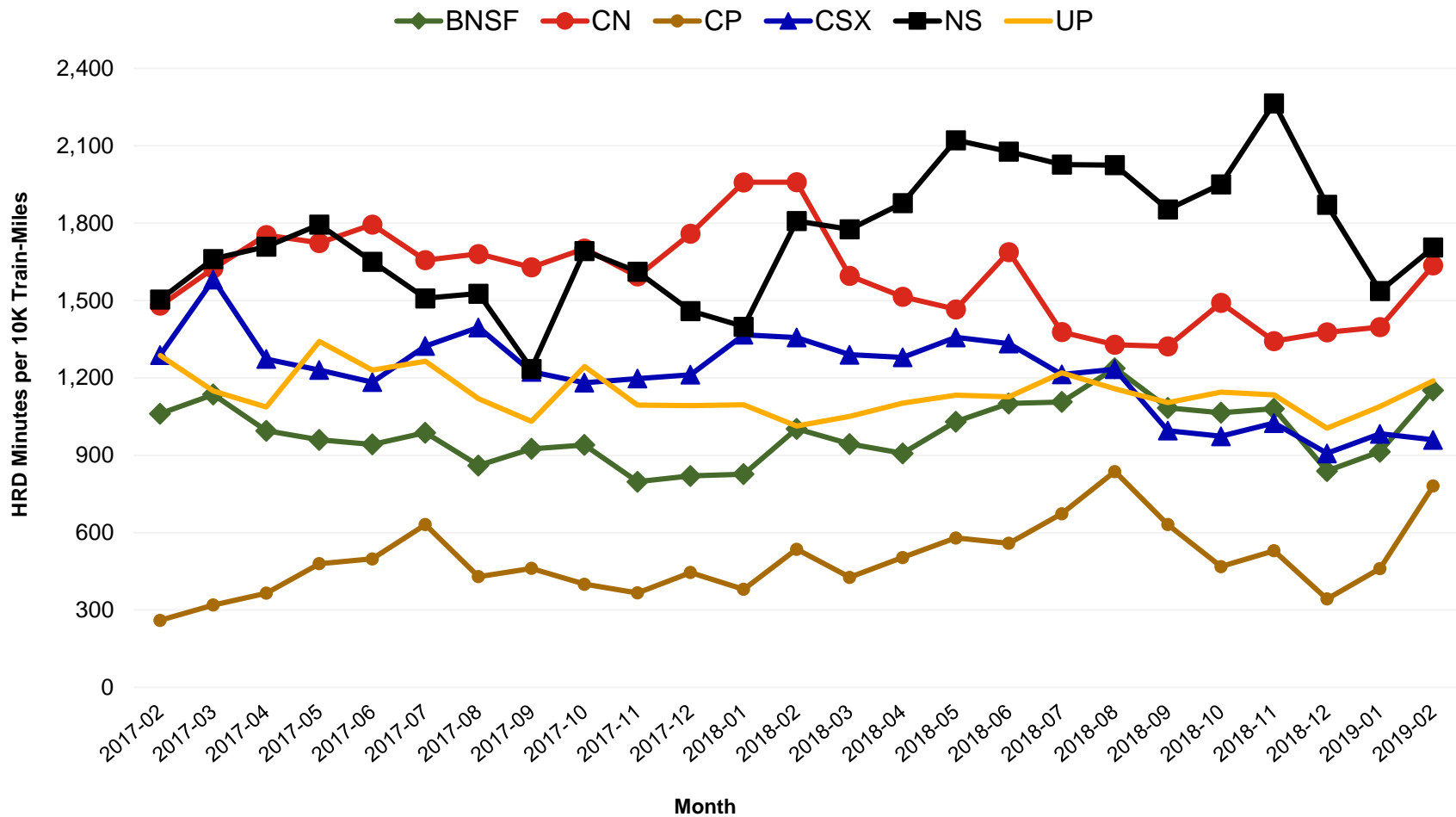


Responsible Party	6 Major Host Railroads	Amtrak	Third Party
Delay Minutes per 10K Train-Miles	1,186	399	113
Percentage of Total Delays	69.9%	23.5%	6.7%

Total Host-Responsible Delays

2 Year Snapshot

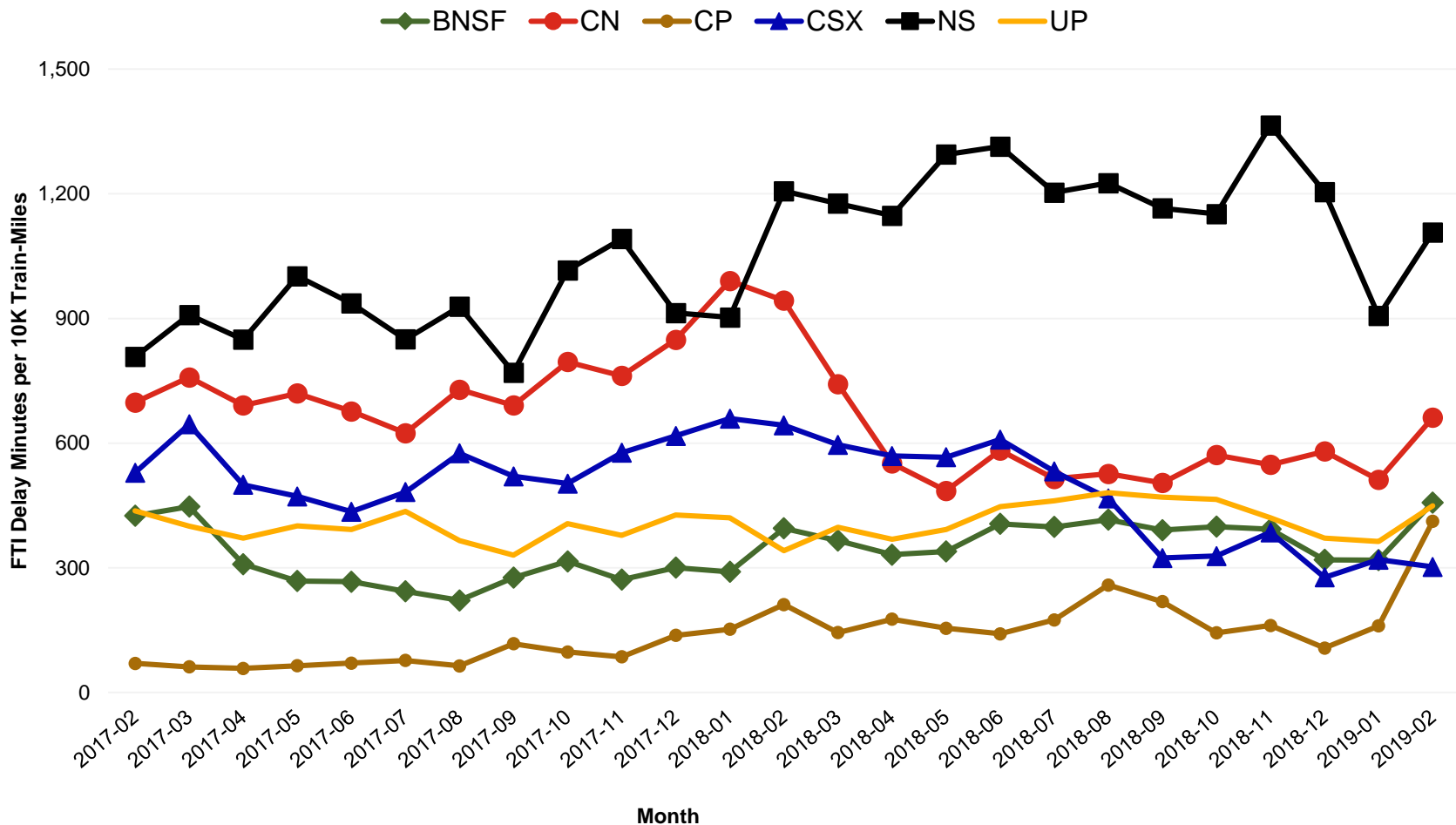
Total host-responsible delay (HRD) minutes per 10,000 train-miles incurred by Amtrak trains on each of the six major host railroads for the most recent two years.



Freight Train Interference Delays

2 Year Snapshot

Total delay minutes per 10,000 train-miles attributable to freight train interference (FTI) incurred by Amtrak trains on each of the six major host railroads for the most recent two years.



Minutes of Delay per 10K Train Miles by Host for February 2019

Host	Service	Total Host Responsible Delays		Largest Two Delay Categories - Current Month				Route Miles
		Current Month	Most Recent 12 Months	#1		#2		
Target		900	900					
BNSF	California Zephyr	1648	1237	FTI	616	DSR	489	1027
	Carl Sandburg / Illinois Zephyr	573	625	FTI	273	CTI	77	257
	Cascades	1769	1379	DSR	520	FTI	446	343
	Coast Starlight	893	793	DCS	255	FTI	202	186
	Empire Builder	1409	1055	FTI	855	DCS	164	2147
	Heartland Flyer	970	2125	DSR	728	FTI	141	236
	Pacific Surfliner	1345	1269	DCS	364	DSR	257	22
	San Joaquins	846	972	PTI	360	FTI	252	284
	Southwest Chief	711	734	FTI	305	DCS	139	2206
	Sunset Ltd	2723	1699	FTI	1406	DSR	1094	190
Texas Eagle	2220	1892	DSR	1455	DTR	295	116	
CN	Adirondack	3590	3069	DSR	1460	RTE	1090	49
	Blue Water	1095	808	FTI	848	DCS	178	159
	City Of New Orleans	1226	1174	FTI	651	DSR	216	930
	Illini / Saluki	1536	1682	DCS	780	FTI	337	304
	Lincoln Service	3355	1803	DSR	1456	FTI	1165	35
	Texas Eagle	5270	2938	FTI	2027	DSR	1811	35
	Wolverine	3374	2102	FTI	1254	DCS	832	27
CP	Adirondack	508	744	PTI	362	FTI	57	178
	Empire Builder	1457	733	FTI	980	DSR	195	384
	Ethan Allen Express	525	648	PTI	306	DCS	74	60
	Hiawatha	289	289	DCS	91	FTI	89	53
CSX	Auto Train	1234	1248	FTI	563	DSR	258	898
	Capitol Ltd	962	1186	DCS	264	DSR	262	307
	Cardinal	1178	943	FTI	539	DCS	280	703
	Carolinian	1197	1646	DSR	290	PTI	208	295
	Hoosier	507	738	FTI	253	DCS	164	175
	Lake Shore Ltd	635	930	FTI	244	RTE	151	741
	Maple Leaf	1090	1251	FTI	513	RTE	332	298
	New York - Niagara Falls	923	1052	FTI	359	RTE	339	296
	Palmetto	868	1093	FTI	233	PTI	222	659
	Pere Marquette	362	428	FTI	132	DSR	116	135
	Richmond / Newport News / Norfolk	1224	1703	DSR	364	FTI	232	189
	Silver Meteor	669	831	FTI	237	DSR	168	1152
	Silver Star	1019	1118	DSR	349	PTI	229	1209
NS	Blue Water	5261	3667	FTI	3746	DCS	1001	39
	Capitol Ltd	2378	2710	FTI	1977	PTI	176	481
	Cardinal	2376	1688	DCS	1092	FTI	591	79
	Carolinian	917	1065	PTI	327	FTI	251	202
	Crescent	1616	1927	FTI	892	DSR	239	1141
	Lake Shore Ltd	1988	2970	FTI	1506	PTI	228	339
	Pennsylvanian	1243	1404	FTI	867	RTE	142	249
	Pere Marquette	3627	2741	FTI	2482	PTI	580	39
	Piedmont	790	1184	FTI	344	DCS	177	173
	Richmond / Newport News / Norfolk	432	464	DSR	165	FTI	161	81
	Roanoke	887	815	FTI	527	DCS	103	216
	Silver Star	1369	984	DSR	461	DCS	360	28
	Wolverine	5727	3653	FTI	4311	DCS	906	39
UP	California Zephyr	781	720	FTI	307	DCS	178	1381
	Capitol Corridor	589	572	PTI	260	DCS	114	171
	Cascades	1623	1320	FTI	424	DCS	372	125
	Coast Starlight	1585	1282	FTI	531	PTI	452	1162
	Lincoln Service	1043	992	FTI	473	PTI	302	231
	Missouri	1564	833	FTI	1159	PTI	185	271
	Pacific Surfliner	1514	1354	PTI	864	DCS	329	174
	San Joaquins	1197	1194	PTI	506	DCS	252	88
	Sunset Ltd	2095	1797	FTI	1291	DSR	324	1784
Texas Eagle	1430	1829	FTI	611	DSR	309	1073	

Minutes of Delay per 10K Train Miles by Host for February 2019

Host	Service	Total Host Responsible Delays		Largest Two Delay Categories - Current Month				Route Miles
		Current Month	Most Recent 12 Months	#1		#2		
Target		900	900					
Amtrak	Adirondack	427	535	DCS	127	PTI	106	100
	Blue Water	870	772	DCS	530	PTI	238	99
	Ethan Allen Express	657	650	PTI	341	DCS	181	100
	Maple Leaf	355	467	DCS	141	PTI	101	109
	New York - Albany	224	372	PTI	91	DCS	52	81
	New York - Niagara Falls	449	453	DCS	166	PTI	145	109
	Wolverine	908	1034	DCS	550	PTI	278	99
	BBrRR	Cardinal	908	1288	PTI	362	FTI	217
Fla DOT	Silver Meteor	1049	1339	CTI	449	DSR	405	68
	Silver Star	998	1429	CTI	521	DSR	334	68
FR	Auto Train	3012	2875	CTI	1381	DCS	1190	16
	Silver Meteor	1255	1754	CTI	548	DCS	287	61
	Silver Star	1290	1188	CTI	592	DSR	337	61
MADOT	Vermonteer	1987	2260	DSR	1737	DMW	176	50
MBTA	Downeaster	814	1134	CTI	521	DCS	104	38
Metra	Empire Builder	1822	1581	CTI	1368	DCS	151	29
	Hiawatha	1582	1390	CTI	1054	DSR	238	29
MIDOT	Blue Water	349	423	PTI	170	DCS	138	22
	Wolverine	539	545	PTI	288	DCS	180	134
MNRR	Acela Express	1838	1980	DSR	871	CTI	664	56
	Adirondack	572	1375	CTI	191	DSR	123	64
	All Other Northeast Regional	1953	2155	DSR	1152	CTI	646	56
	Ethan Allen Express	1312	1553	CTI	628	DMW	235	64
	Lake Shore Ltd	1046	1468	CTI	510	PTI	174	64
	Maple Leaf	734	1297	CTI	505	RTE	129	64
	New York - Albany	828	1383	CTI	447	DSR	127	64
	New York - Niagara Falls	1319	1832	CTI	615	DMW	235	64
	Richmond / Newport News / Norfolk	2429	2533	DSR	1176	CTI	664	56
	Vermonteer	2526	2702	DSR	1189	CTI	874	56
NECR	Vermonteer	646	1227	DSR	600	RTE	33	238
NMDOT	Southwest Chief	797	1851	CTI	448	DSR	107	80
PanAm	Downeaster	938	1120	PTI	357	FTI	219	107
SCRRA	Coast Starlight	1986	2394	PTI	1011	CTI	681	48
	Pacific Surfliner	1064	1041	PTI	407	CTI	363	95
SDNRR	Pacific Surfliner	1736	1595	CTI	693	PTI	544	60
TRE	Texas Eagle	1764	2608	CTI	1053	DTR	239	33
VTR	Ethan Allen Express	284	190	DSR	149	DMW	120	24

The numbers included in this document are preliminary and are for informational purposes only.
 Excludes hosts with fewer than 15 route miles.
 Delays on the Amtrak-owned portion of the Northeast Corridor are shown in a separate report, with tighter delay standards.
 Northeast Regional: Roanoke includes all trains between Roanoke and points on the NEC; Richmond / Newport News / Norfolk includes all trains between these locations and points on the NEC.

Minutes of Delay per 10K Train Miles by Service for February 2019

Service	Host	Total Host Responsible Delays		Largest Two Delay Categories - Current Month				Route Miles	
		Current Month	Most Recent 12 Months	#1		#2			
Target		900	900						
Acela Express									
Acela Express	MNRR	1838	1980	DSR	871	CTI	664	56	
All Other NEC Corridor Routes									
Northeast Regional	Richmond / Newport News / Norfolk	CSX	1224	1703	DSR	364	FTI	232	189
		NS	432	464	DSR	165	FTI	161	81
		MNRR	2429	2533	DSR	1176	CTI	664	56
	All Other Northeast Regional	MNRR	1953	2155	DSR	1152	CTI	646	56
	Roanoke	NS	887	815	FTI	527	DCS	103	216
Non-NEC Corridor Routes									
Capitol Corridor		UP	589	572	PTI	260	DCS	114	171
Carolinian		CSX	1197	1646	DSR	290	PTI	208	295
		NS	917	1065	PTI	327	FTI	251	202
Cascades		BNSF	1769	1379	DSR	520	FTI	446	343
		UP	1623	1320	FTI	424	DCS	372	125
Downeaster		MBTA	814	1134	CTI	521	DCS	104	38
		PanAm	938	1120	PTI	357	FTI	219	107
Empire	Adirondack	CN	3590	3069	DSR	1460	RTE	1090	49
		CP	508	744	PTI	362	FTI	57	178
		Amtrak	427	535	DCS	127	PTI	106	100
		MNRR	572	1375	CTI	191	DSR	123	64
	Ethan Allen Express	CP	525	648	PTI	306	DCS	74	60
		Amtrak	657	650	PTI	341	DCS	181	100
		MNRR	1312	1553	CTI	628	DMW	235	64
		VTR	284	190	DSR	149	DMW	120	24
	Maple Leaf	CSX	1090	1251	FTI	513	RTE	332	298
		Amtrak	355	467	DCS	141	PTI	101	109
		MNRR	734	1297	CTI	505	RTE	129	64
	New York - Albany	Amtrak	224	372	PTI	91	DCS	52	81
		MNRR	828	1383	CTI	447	DSR	127	64
	New York - Niagara Falls	CSX	923	1052	FTI	359	RTE	339	296
		Amtrak	449	453	DCS	166	PTI	145	109
		MNRR	1319	1832	CTI	615	DMW	235	64
Heartland Flyer		BNSF	970	2125	DSR	728	FTI	141	236
Hiawatha		CP	289	289	DCS	91	FTI	89	53
		Metra	1582	1390	CTI	1054	DSR	238	29
Hoosier		CSX	507	738	FTI	253	DCS	164	175
Illinois	Carl Sandburg / Illinois Zephyr	BNSF	573	625	FTI	273	CTI	77	257
	Illini / Saluki	CN	1536	1682	DCS	780	FTI	337	304
	Lincoln Service	CN	3355	1803	DSR	1456	FTI	1165	35
		UP	1043	992	FTI	473	PTI	302	231
Michigan	Blue Water	CN	1095	808	FTI	848	DCS	178	159
		NS	5261	3667	FTI	3746	DCS	1001	39
		Amtrak	870	772	DCS	530	PTI	238	99
		MIDOT	349	423	PTI	170	DCS	138	22
	Pere Marquette	CSX	362	428	FTI	132	DSR	116	135
		NS	3627	2741	FTI	2482	PTI	580	39
	Wolverine	CN	3374	2102	FTI	1254	DCS	832	27
		NS	5727	3653	FTI	4311	DCS	906	39
		Amtrak	908	1034	DCS	550	PTI	278	99
		MIDOT	539	545	PTI	288	DCS	180	134
Missouri		UP	1564	833	FTI	1159	PTI	185	271
Pacific Surfliner		BNSF	1345	1269	DCS	364	DSR	257	22
		UP	1514	1354	PTI	864	DCS	329	174
		SCRRA	1064	1041	PTI	407	CTI	363	95
		SDNRR	1736	1595	CTI	693	PTI	544	60
Pennsylvanian		NS	1243	1404	FTI	867	RTE	142	249
Piedmont		NS	790	1184	FTI	344	DCS	177	173
San Joaquins		BNSF	846	972	PTI	360	FTI	252	284
		UP	1197	1194	PTI	506	DCS	252	88
Vermont		MADOT	1987	2260	DSR	1737	DMW	176	50
		MNRR	2526	2702	DSR	1189	CTI	874	56
		NECR	646	1227	DSR	600	RTE	33	238

Minutes of Delay per 10K Train Miles by Service for February 2019

Service	Host	Total Host Responsible Delays		Largest Two Delay Categories - Current Month				Route Miles
		Current Month	Most Recent 12 Months	#1		#2		
Target		900	900					
Long-Distance Routes								
Auto Train	CSX	1234	1248	FTI	563	DSR	258	898
	FR	3012	2875	CTI	1381	DCS	1190	16
California Zephyr	BNSF	1648	1237	FTI	616	DSR	489	1027
	UP	781	720	FTI	307	DCS	178	1381
Capitol Ltd	CSX	962	1186	DCS	264	DSR	262	307
	NS	2378	2710	FTI	1977	PTI	176	481
Cardinal	CSX	1178	943	FTI	539	DCS	280	703
	NS	2376	1688	DCS	1092	FTI	591	79
	BBrRR	908	1288	PTI	362	FTI	217	132
City Of New Orleans	CN	1226	1174	FTI	651	DSR	216	930
Coast Starlight	BNSF	893	793	DCS	255	FTI	202	186
	UP	1585	1282	FTI	531	PTI	452	1162
	SCRRA	1986	2394	PTI	1011	CTI	681	48
Crescent	NS	1616	1927	FTI	892	DSR	239	1141
Empire Builder	BNSF	1409	1055	FTI	855	DCS	164	2147
	CP	1457	733	FTI	980	DSR	195	384
	Metra	1822	1581	CTI	1368	DCS	151	29
Lake Shore Ltd	CSX	635	930	FTI	244	RTE	151	741
	NS	1988	2970	FTI	1506	PTI	228	339
	MNRR	1046	1468	CTI	510	PTI	174	64
Palmetto	CSX	868	1093	FTI	233	PTI	222	659
Silver Meteor	CSX	669	831	FTI	237	DSR	168	1152
	Fla DOT	1049	1339	CTI	449	DSR	405	68
	FR	1255	1754	CTI	548	DCS	287	61
Silver Star	CSX	1019	1118	DSR	349	PTI	229	1209
	NS	1369	984	DSR	461	DCS	360	28
	Fla DOT	998	1429	CTI	521	DSR	334	68
	FR	1290	1188	CTI	592	DSR	337	61
Southwest Chief	BNSF	711	734	FTI	305	DCS	139	2206
	NMDOT	797	1851	CTI	448	DSR	107	80
Sunset Ltd	BNSF	2723	1699	FTI	1406	DSR	1094	190
	UP	2095	1797	FTI	1291	DSR	324	1784
Texas Eagle	BNSF	2220	1892	DSR	1455	DTR	295	116
	CN	5270	2938	FTI	2027	DSR	1811	35
	UP	1430	1829	FTI	611	DSR	309	1073
	TRE	1764	2608	CTI	1053	DTR	239	33

The numbers included in this document are preliminary and are for informational purposes only.

Excludes hosts with fewer than 15 route miles.

Delays on the Amtrak-owned portion of the Northeast Corridor are shown in a separate report, with tighter delay standards.

Northeast Regional: Roanoke includes all trains between Roanoke and points on the NEC; Richmond / Newport News / Norfolk includes all trains between these locations and points on the NEC.

All Stations and Customer OTP for February 2019

Service	All Stations OTP		Customer OTP		Avg Mins Late per Late Rider**	
	Current Month	Most Recent 12 Months	Current Month	Most Recent 12 Months	Current Month	Most Recent 12 Months
Amtrak System	74.9%	72.3%	77.4%	72.6%	67	58
NEC Corridor Routes	91.1%	83.5%	89.0%	82.0%	34	39
Target*	80.0%	80.0%				
Acela Express*	89.7%	79.7%	85.5%	80.3%	30	30
Keystone	95.3%	91.8%	95.1%	91.0%	28	36
Northeast Regional	90.1%	81.6%	88.7%	80.2%	37	43
All Other Northeast Regional	92.4%	86.3%	91.4%	85.8%	36	41
Richmond / Newport News / Norfolk	86.6%	75.0%	86.5%	72.2%	37	44
Roanoke	78.3%	74.2%	75.7%	71.3%	42	44
Springfield Shuttles	95.2%	84.4%	94.8%	85.9%	34	35
Non-NEC Corridor Routes	76.3%	76.2%	73.1%	72.0%	49	43
Target	80.0%	80.0%				
Capitol Corridor	88.8%	89.2%	87.5%	88.0%	30	31
Carolinian	65.3%	49.6%	66.1%	47.7%	42	63
Cascades	52.7%	61.6%	47.2%	54.8%	55	41
Downeaster	90.5%	81.9%	85.1%	75.8%	30	35
Empire	83.7%	77.3%	85.2%	74.5%	44	41
Adirondack	85.7%	70.0%	88.3%	67.1%	40	48
Ethan Allen Express	92.1%	87.3%	91.6%	79.7%	31	31
Maple Leaf	74.6%	65.5%	73.0%	64.0%	40	48
New York - Albany	95.4%	89.1%	93.4%	84.7%	41	36
New York - Niagara Falls	69.8%	69.6%	70.7%	60.8%	48	41
Heartland Flyer	89.3%	58.7%	89.7%	42.0%	22	45
Hiawatha	94.4%	95.2%	91.9%	94.6%	41	40
Hoosier	76.9%	80.5%	75.7%	81.0%	49	47
Illinois	65.3%	68.4%	60.2%	64.7%	50	44
Carl Sandburg / Illinois Zephyr	82.4%	86.6%	77.1%	83.7%	45	47
Illini / Saluki	39.9%	38.4%	31.9%	27.3%	39	44
Lincoln Service	70.7%	75.6%	67.4%	74.4%	61	44
Michigan	51.2%	63.6%	32.6%	51.0%	67	44
Blue Water	55.4%	73.6%	33.8%	58.3%	69	47
Pere Marquette	74.4%	82.6%	57.0%	74.9%	38	38
Wolverine	47.2%	58.5%	27.8%	43.6%	69	43
Missouri	71.0%	81.6%	69.0%	79.3%	79	47
Pacific Surfliner	73.0%	77.3%	69.5%	73.1%	51	45
Pennsylvanian	75.5%	71.0%	77.5%	69.5%	29	45
Piedmont	84.4%	74.1%	82.6%	64.6%	43	40
San Joaquins	69.2%	71.8%	63.2%	63.9%	37	41
Vermonteer	93.2%	70.5%	90.8%	74.0%	49	46
Long-Distance Routes	41.9%	42.7%	46.7%	42.8%	124	101
Target	80.0%	80.0%				
Auto Train	88.4%	74.1%	74.0%	62.7%	60	109
California Zephyr	24.8%	43.1%	35.8%	42.7%	187	118
Capitol Ltd	36.0%	34.7%	25.1%	22.4%	86	104
Cardinal	48.4%	52.3%	52.1%	54.8%	143	79
City Of New Orleans	46.6%	53.7%	54.2%	68.1%	97	65
Coast Starlight	41.3%	51.9%	42.0%	53.6%	116	91
Crescent	27.9%	27.3%	28.5%	24.0%	126	134
Empire Builder	26.1%	43.5%	23.7%	42.0%	225	130
Lake Shore Ltd	55.6%	42.3%	55.0%	33.5%	86	87
Palmetto	66.6%	59.5%	77.7%	57.8%	69	59
Silver Meteor	70.8%	49.8%	71.9%	43.7%	45	83
Silver Star	44.8%	37.1%	37.5%	30.1%	62	87
Southwest Chief	43.3%	40.2%	43.7%	36.6%	110	102
Sunset Ltd	13.1%	23.4%	27.8%	35.5%	115	135
Texas Eagle	38.9%	35.8%	41.3%	34.1%	98	106

The numbers included in this document are preliminary and are for informational purposes only.

Northeast Regional: Roanoke includes all trains between Roanoke and points on the NEC; Richmond/Newport News/Norfolk includes all trains between these locations and points on the NEC.

* Acela Express on time performance target is 90.0%

** Excludes on time Customers

Host Railroad Responsible Delays

Code	Code Description	Explanation
CTI	Commuter Train Interference	Delays for meeting or following commuter trains
DCS	Signal Delays	Signal failure or All Other signal delays, wayside defect-detector false-alarms, defective road crossing protection, efficiency tests, drawbridge stuck open
DMW	Maintenance of Way	Maintenance of Way delays including holds for track repairs or MW foreman to clear
DSR	Slow Order Delays	Temporary slow orders, except heat or cold orders
DTR	Detour	Delays from detours
FTI	Freight Train Interference	Delays from freight trains
PTI	Passenger Train Interference	Delays for meeting or following All Other passenger trains
RTE	Routing	Routing-dispatching delays including diversions, late track bulletins, etc.

Amtrak Responsible Delays

Code	Code Description	Explanation
ADA	Passenger Related	All delays related to disabled passengers, wheel chair lifts, guide dogs, etc.
CAR	Car Failure	Mechanical failure on all types of cars
CCR	Cab Car Failure	Mechanical failure on Cab Cars
CON	Hold for Connection	Holding for connections from All Other trains or buses.
ENG	Locomotive Failure	Mechanical failure on engines.
HLD	Passenger Related	All delays related to passengers, checked-baggage, large groups, etc.
INJ	Injury Delay	Delay due to injured passengers or employees.
ITI	Initial Terminal Delay	Delay at initial terminal due to late arriving inbound trains causing late release of equipment.
OTH	Miscellaneous Delays	Lost-on-run, heavy trains, unable to make normal speed, etc.
SVS	Servicing	All switching and servicing delays
SYS	Crew & System	Delays related to crews including lateness, lone-engineer delays

Third-Party Delays

Code	Code Description	Explanation
CUI	Customs	U.S. and Canadian customs delays; Immigration-related delays
DBS	Debris	Debris strikes
MBO	Drawbridge Openings	Movable bridge openings for marine traffic where no bridge failure is involved
NOD	Unused Recovery Time	Wait for departure time
POL	Police-Related	Police/fire department holds on right-of-way or on-board trains
TRS	Trespassers	Trespasser incidents including road crossing accidents, trespasser / animal strikes, vehicle stuck on track ahead, bridge strikes
WTR	Weather-Related	All severe-weather delays, landslides or washouts, earthquake-related delays, heat or cold orders

*These delay codes are applicable to Off-NEC routes only.