



# Host Railroad Report

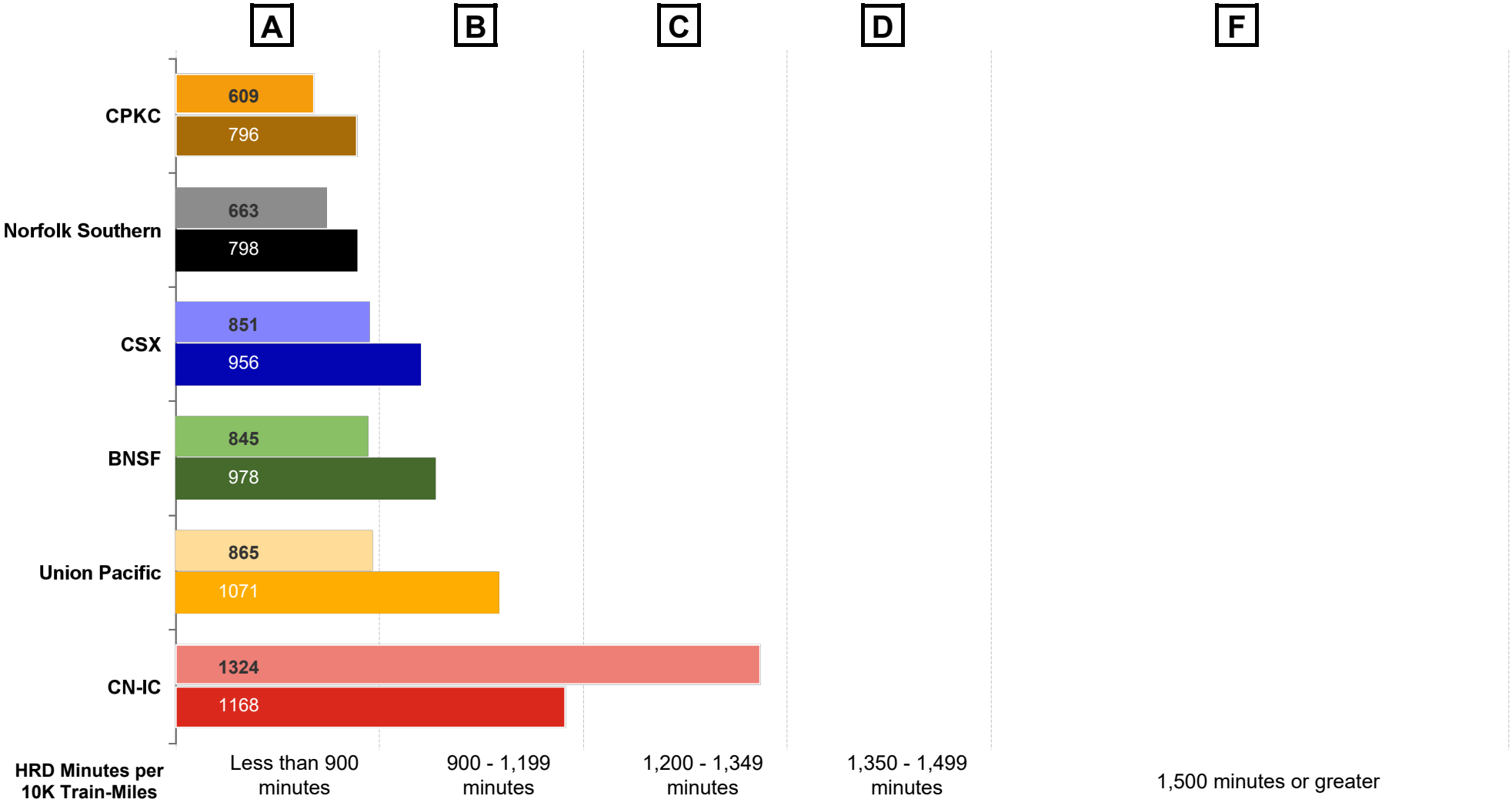
Amtrak Train Performance on Host Railroads

Data through December 2025

# Host Railroad Report Card Update

## Current Month and 1 Year Snapshot

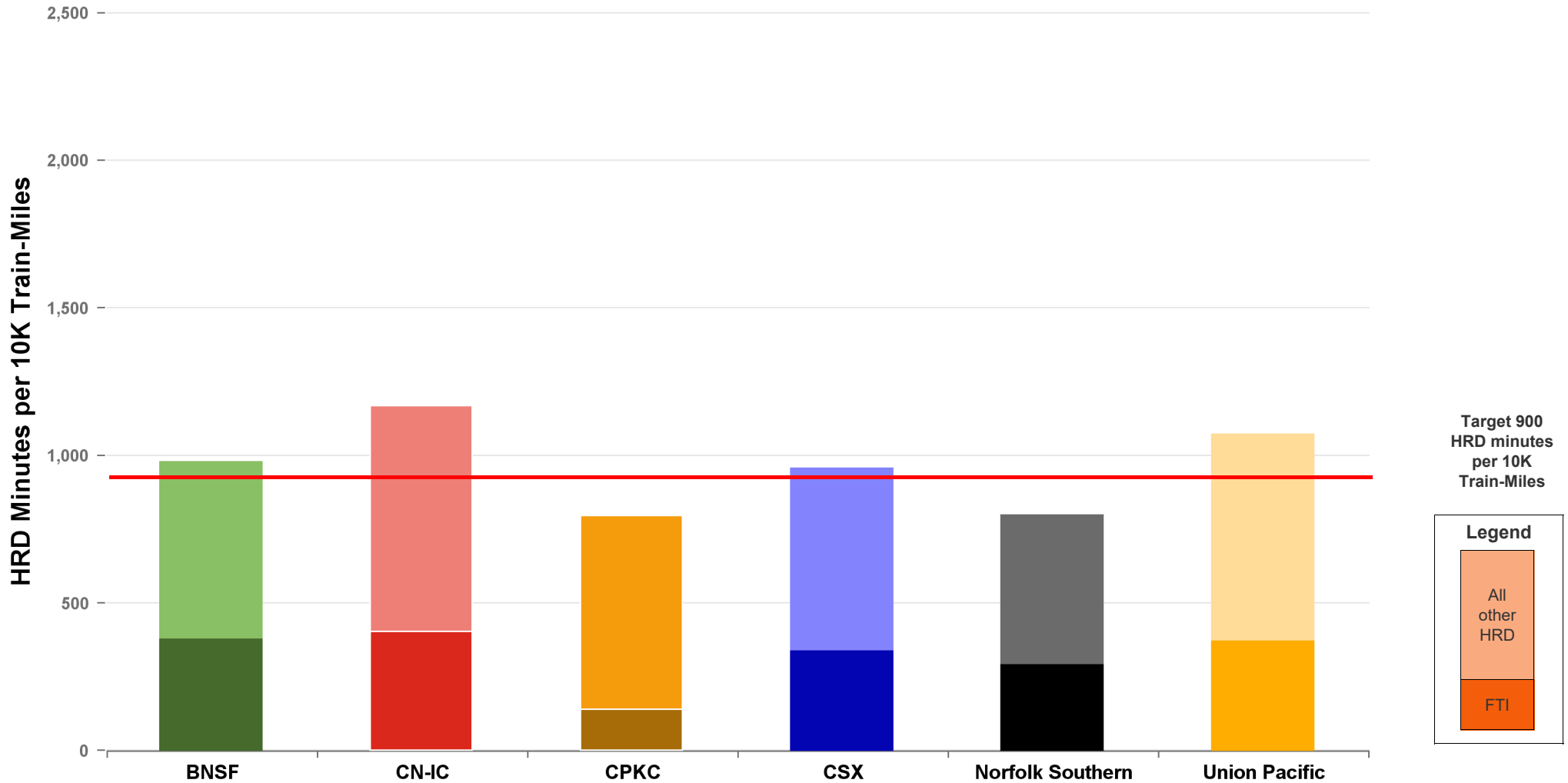
A monthly update of the Host Railroad Report Card, which grades the six major host railroads based on host responsible delay (HRD) minutes per 10,000 train-miles for the current month (lighter shade) and the most recent 12 months.



# Total Host-Responsible Delays

## 1 Year Snapshot

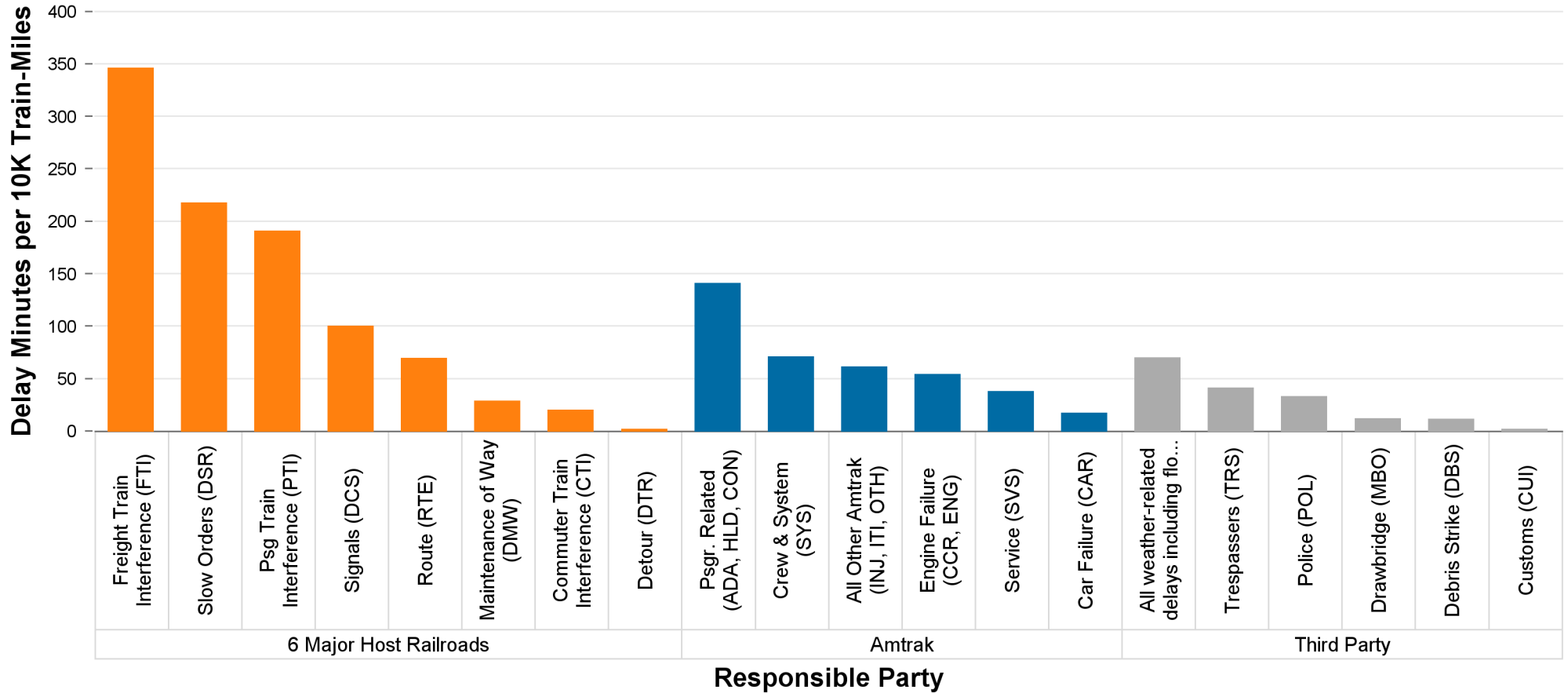
Total host-responsible delay (HRD) minutes per 10,000 train-miles incurred by Amtrak trains on the six major host railroads, with delays attributable to freight train interference (FTI) shaded.



# Delays to Amtrak Trains by Responsible Party

## 1 Year Snapshot

Delay minutes per 10,000 train-miles on the six major host railroads categorized by delay type and responsible party.

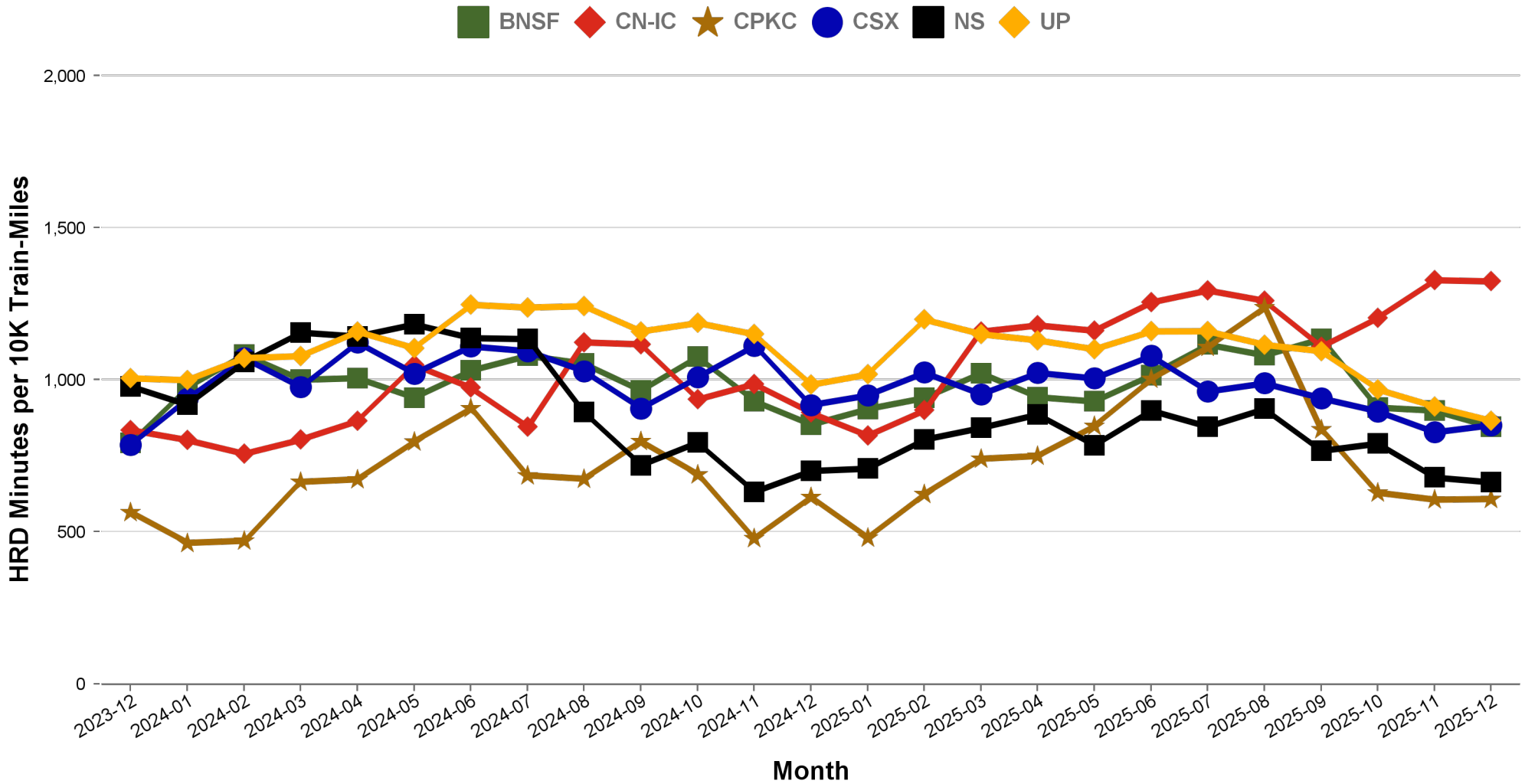


| Responsible Party                 | 6 Major Host Railroads | Amtrak | Third Party |
|-----------------------------------|------------------------|--------|-------------|
| Delay Minutes per 10K Train-Miles | 979                    | 375    | 169         |
| Percentage of Total Delays        | 64.2%                  | 24.7%  | 11.1%       |

# Total Host-Responsible Delays

## 2 Year Snapshot

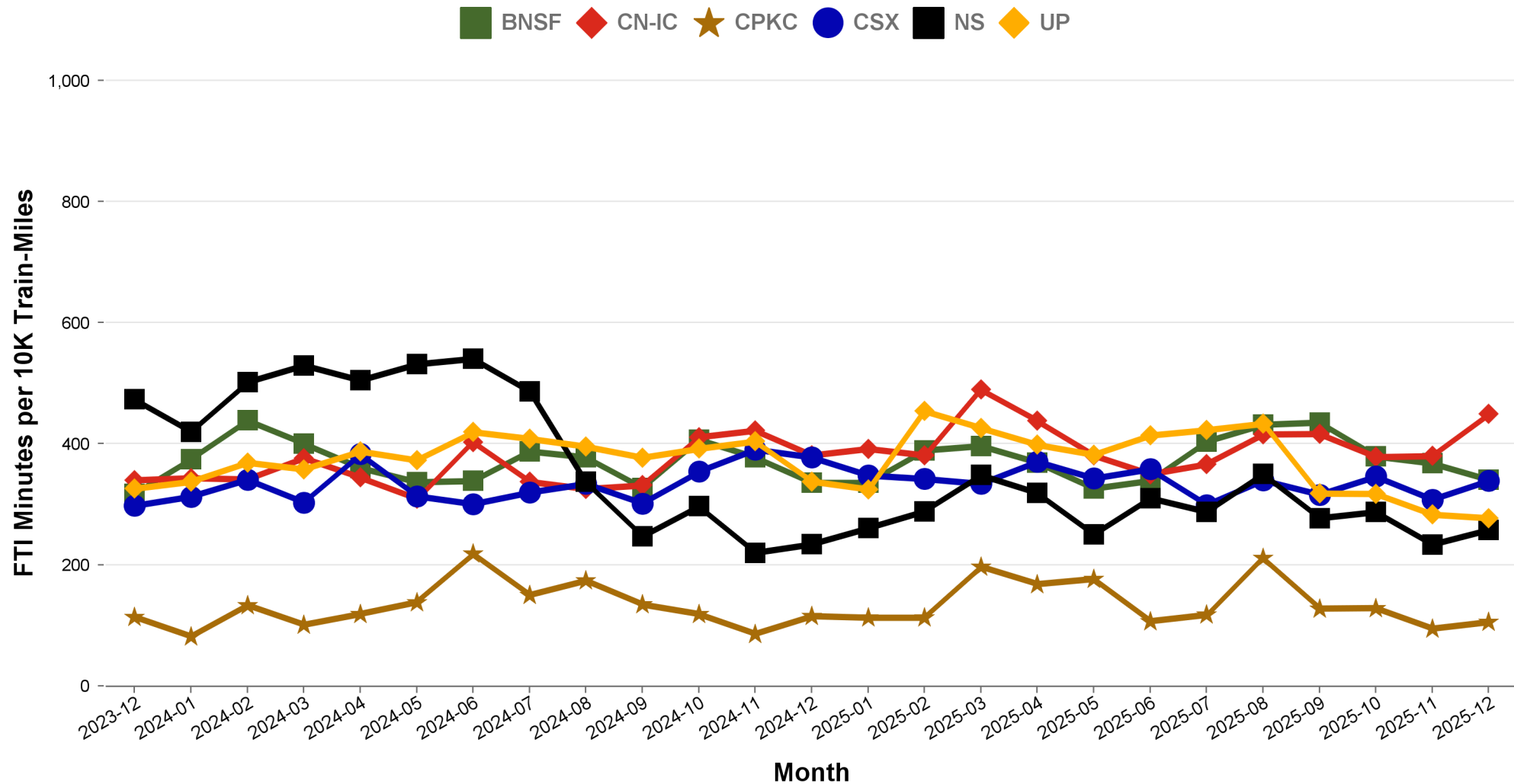
Total host-responsible delay (HRD) minutes per 10,000 train-miles incurred by Amtrak trains on each of the six major host railroads for the most recent two years.



# Freight Train Interference Delays

## 2 Year Snapshot

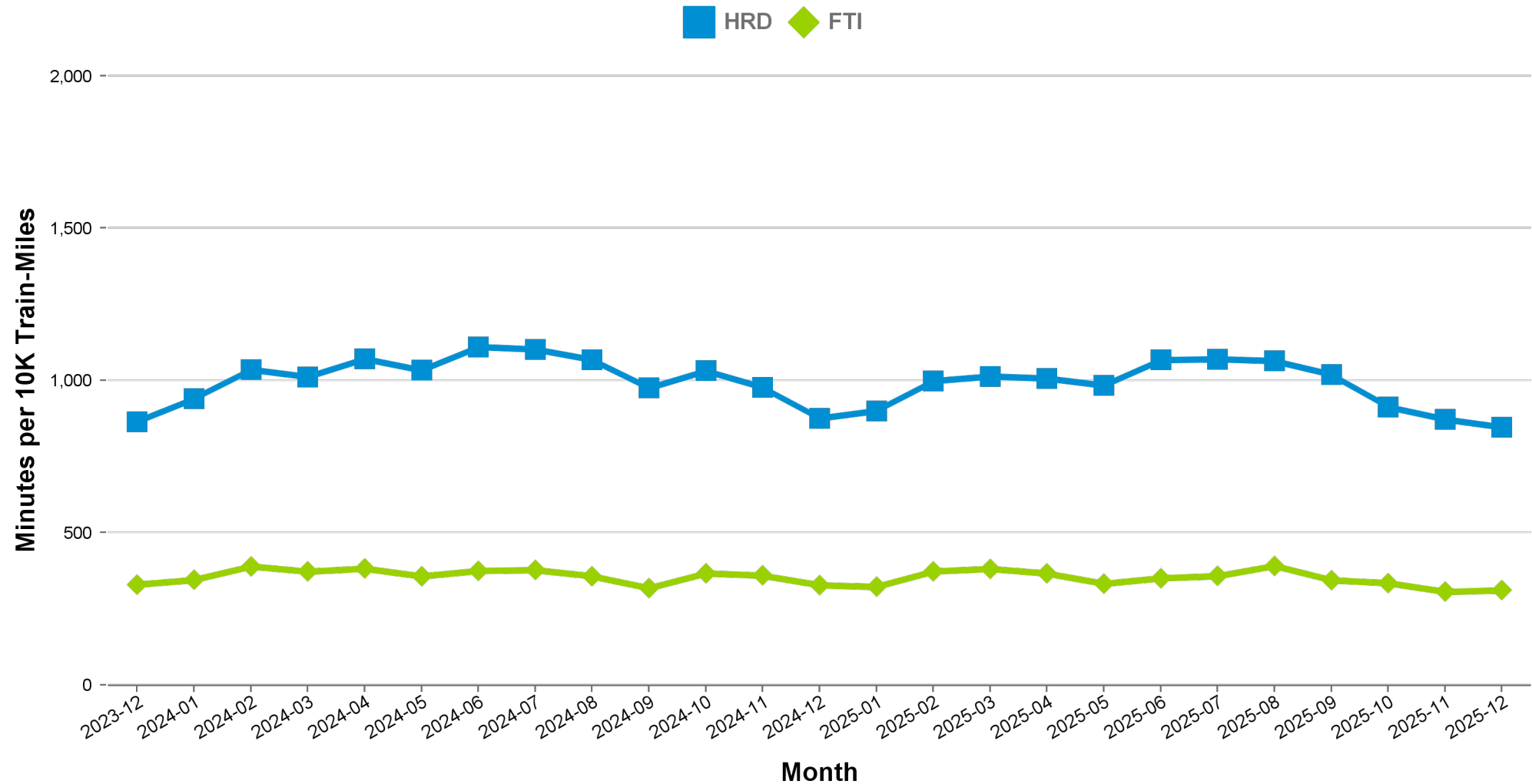
Total delay minutes per 10,000 train-miles attributable to freight train interference (FTI) incurred by Amtrak trains on each of the six major host railroads for the most recent two years.



# Aggregated Host Railroad Performance Trend

## 2 Year Snapshot

Total host-responsible delay (HRD) and freight interference (FTI) minutes per 10,000 train-miles incurred by Amtrak trains, aggregated for the six major host railroads for the most recent two years.



# Minutes of Delay per 10K Train Miles by Host for December 2025

| Host   | Service                           | Total Host Responsible Delays |                       | Largest Two Delay Categories - Current Month |      |      |     | Route Miles |
|--------|-----------------------------------|-------------------------------|-----------------------|--|------|------|-----|-------------|
|        |                                   | Current Month                 | Most Recent 12 Months | #1   |      | #2   |     |             |
| Target |                                   | 900                           | 900                   |  |      |      |     |             |
| BNSF   | California Zephyr                 | 696                           | 800                   | FTI  | 300  | DSR  | 86  | 1027        |
|        | Carl Sandburg / Illinois Zephyr   | 800                           | 765                   | FTI  | 426  | CTI  | 102 | 257         |
|        | Cascades                          | 871                           | 1033                  | FTI  | 262  | PTI  | 214 | 317         |
|        | Coast Starlight                   | 664                           | 1077                  | RTE  | 189  | DSR  | 140 | 158         |
|        | Empire Builder                    | 767                           | 793                   | FTI  | 483  | DSR  | 91  | 2147        |
|        | Gold Runner                       | 1043                          | 1247                  | PTI  | 509  | FTI  | 301 | 284         |
|        | Heartland Flyer                   | 1187                          | 2066                  | DSR  | 863  | FTI  | 281 | 236         |
|        | Pacific Surfliner                 | 647                           | 1050                  | FTI  | 222  | DCS  | 163 | 22          |
|        | Southwest Chief                   | 785                           | 887                   | FTI  | 315  | DSR  | 183 | 2206        |
|        | Sunset Ltd                        | 940                           | 1228                  | DSR  | 452  | DCS  | 234 | 190         |
|        | Texas Eagle                       | 1515                          | 1813                  | DSR  | 682  | FTI  | 400 | 116         |
| CN-IC  | Blue Water                        | 1076                          | 899                   | DSR  | 463  | FTI  | 391 | 159         |
|        | City Of New Orleans               | 1118                          | 1114                  | DSR  | 408  | FTI  | 312 | 930         |
|        | Illini / Saluki                   | 1070                          | 764                   | DSR  | 467  | FTI  | 280 | 304         |
|        | Lincoln / Missouri                | 2172                          | 2571                  | FTI  | 1378 | RTE  | 320 | 35          |
|        | Lincoln Service                   | 2123                          | 2072                  | FTI  | 1603 | DCS  | 230 | 35          |
|        | Texas Eagle                       | 1942                          | 2340                  | FTI  | 1491 | DCS  | 212 | 35          |
|        | Wolverine                         | 3753                          | 3062                  | DSR  | 2570 | FTI  | 755 | 27          |
| CPKC   | Adirondack                        | 972                           | 1149                  | PTI  | 546  | DCS  | 281 | 178         |
|        | Borealis                          | 674                           | 890                   | DCS  | 185  | DSR  | 164 | 376         |
|        | Empire Builder                    | 504                           | 885                   | FTI  | 181  | PTI  | 129 | 384         |
|        | Ethan Allen Express               | 1822                          | 1758                  | PTI  | 1193 | DCS  | 516 | 60          |
|        | Hiawatha                          | 208                           | 180                   | DCS  | 91   | PTI  | 36  | 53          |
| CSX    | Auto Train                        | 1043                          | 1183                  | FTI  | 459  | PTI  | 236 | 898         |
|        | Cardinal                          | 718                           | 870                   | DCS  | 312  | FTI  | 247 | 703         |
|        | Carolinian                        | 1245                          | 1507                  | PTI  | 351  | FTI  | 302 | 295         |
|        | Downeaster                        | 638                           | 773                   | PTI  | 342  | DCS  | 155 | 107         |
|        | Floridian                         | 839                           | 975                   | FTI  | 297  | PTI  | 165 | 1413        |
|        | Lake Shore Ltd                    | 830                           | 698                   | FTI  | 466  | PTI  | 124 | 741         |
|        | Maple Leaf                        | 514                           | 789                   | FTI  | 299  | PTI  | 71  | 298         |
|        | Mardi Gras Service                | 1707                          | 1975                  | FTI  | 828  | PTI  | 409 | 137         |
|        | New York - Niagara Falls          | 505                           | 662                   | FTI  | 300  | RTE  | 69  | 296         |
|        | Palmetto                          | 913                           | 976                   | FTI  | 396  | PTI  | 274 | 659         |
|        | Pere Marquette                    | 1180                          | 308                   | FTI  | 1051 | DCS  | 104 | 135         |
|        | Richmond / Newport News / Norfolk | 899                           | 1163                  | FTI  | 213  | PTI  | 194 | 189         |
|        | Silver Meteor                     | 712                           | 832                   | FTI  | 295  | PTI  | 170 | 1152        |
| NS     | Blue Water                        | 1467                          | 1845                  | FTI  | 935  | DCS  | 315 | 39          |
|        | Cardinal                          | 1167                          | 1397                  | PTI  | 675  | FTI  | 222 | 79          |
|        | Carolinian                        | 581                           | 638                   | PTI  | 410  | FTI  | 60  | 202         |
|        | Crescent                          | 700                           | 885                   | FTI  | 293  | PTI  | 140 | 1141        |
|        | Floridian                         | 793                           | 895                   | FTI  | 382  | PTI  | 184 | 518         |
|        | Lake Shore Ltd                    | 881                           | 939                   | FTI  | 430  | RTE  | 236 | 339         |
|        | Pennsylvanian                     | 325                           | 623                   | RTE  | 117  | FTI  | 80  | 249         |
|        | Pere Marquette                    | 1011                          | 1353                  | FTI  | 523  | PTI  | 228 | 39          |
|        | Piedmont                          | 504                           | 633                   | PTI  | 254  | DCS  | 88  | 173         |
|        | Richmond / Newport News / Norfolk | 285                           | 448                   | DSR  | 125  | RTE  | 72  | 81          |
|        | Roanoke                           | 482                           | 516                   | PTI  | 207  | FTI  | 114 | 216         |
|        |                                   | Wolverine                     | 1555                  | 1749   | FTI  | 1168 | PTI | 137         |
| UP     | California Zephyr                 | 678                           | 987                   | FTI  | 280  | DSR  | 157 | 1381        |
|        | Capitol Corridor                  | 656                           | 574                   | PTI  | 361  | RTE  | 91  | 171         |
|        | Cascades                          | 1175                          | 1460                  | PTI  | 460  | FTI  | 375 | 125         |
|        | Coast Starlight                   | 1046                          | 1333                  | FTI  | 307  | PTI  | 264 | 1162        |
|        | Gold Runner                       | 1018                          | 1114                  | PTI  | 553  | DCS  | 179 | 88          |
|        | Lincoln / Missouri                | 787                           | 983                   | PTI  | 323  | FTI  | 281 | 502         |
|        | Lincoln Service                   | 977                           | 1004                  | PTI  | 373  | FTI  | 340 | 231         |
|        | Missouri                          | 693                           | 1014                  | FTI  | 469  | PTI  | 99  | 271         |
|        | Pacific Surfliner                 | 984                           | 1029                  | PTI  | 383  | DCS  | 312 | 174         |
|        | Sunset Ltd                        | 829                           | 1223                  | FTI  | 401  | RTE  | 207 | 1784        |
|        |                                   | Texas Eagle                   | 1026                  | 1460   | FTI  | 528  | DSR | 196         |



# Minutes of Delay per 10K Train Miles by Host for December 2025

| Host          | Service                           | Total Host Responsible Delays |                       | Largest Two Delay Categories - Current Month |      |     |     | Route Miles |
|---------------|-----------------------------------|-------------------------------|-----------------------|--|------|-----|-----|-------------|
|               |                                   | Current Month                 | Most Recent 12 Months | #1   |      | #2  |     |             |
| <b>Target</b> |                                   | <b>900</b>                    | <b>900</b>            |  |      |     |     |             |
| Amtrak        | Adirondack                        | 291                           | 516                   | PTI  | 173  | DCS | 49  | 100         |
|               | Blue Water                        | 282                           | 293                   | PTI  | 165  | DCS | 66  | 99          |
|               | Ethan Allen Express               | 282                           | 486                   | CTI  | 113  | PTI | 52  | 100         |
|               | Maple Leaf                        | 626                           | 674                   | RTE  | 191  | DCS | 151 | 109         |
|               | New York - Albany                 | 264                           | 474                   | PTI  | 78   | DCS | 70  | 81          |
|               | New York - Niagara Falls          | 273                           | 478                   | PTI  | 121  | DCS | 58  | 109         |
|               | Wolverine                         | 319                           | 450                   | PTI  | 224  | FTI | 26  | 99          |
| BBrRR         | Cardinal                          | <b>1076</b>                   | <b>1626</b>           | PTI  | 500  | FTI | 463 | 132         |
| CN-Canada     | Adirondack                        | <b>2635</b>                   | <b>3238</b>           | DSR  | 1053 | RTE | 752 | 49          |
| Fla DOT       | Floridian                         | 900                           | <b>1012</b>           | CTI  | 611  | DSR | 111 | 70          |
|               | Silver Meteor                     | 895                           | <b>1020</b>           | CTI  | 466  | RTE | 231 | 70          |
| FR            | Auto Train                        | <b>3671</b>                   | <b>4409</b>           | CTI  | 2899 | DSR | 435 | 16          |
|               | Floridian                         | <b>2313</b>                   | <b>2558</b>           | DSR  | 1055 | CTI | 810 | 61          |
|               | Silver Meteor                     | <b>2221</b>                   | <b>2469</b>           | CTI  | 1037 | DSR | 576 | 61          |
| MADOT         | Springfield Shuttles              | 605                           | 321                   | FTI  | 279  | DCS | 107 | 36          |
|               | Vermonter                         | 228                           | 393                   | DCS  | 222  | PTI | 7   | 50          |
| MBTA          | Downeaster                        | 614                           | 810                   | DCS  | 306  | CTI | 155 | 38          |
| Metra         | Borealis                          | <b>1300</b>                   | <b>1507</b>           | CTI  | 700  | DSR | 253 | 33          |
|               | Empire Builder                    | <b>1603</b>                   | <b>2651</b>           | CTI  | 1077 | PTI | 203 | 29          |
|               | Hiawatha                          | <b>1716</b>                   | <b>2113</b>           | CTI  | 1046 | DSR | 268 | 29          |
| MIDOT         | Blue Water                        | 353                           | 343                   | PTI  | 329  | RTE | 24  | 22          |
|               | Wolverine                         | 753                           | 685                   | PTI  | 593  | FTI | 76  | 134         |
| MNRR          | Acela                             | <b>1580</b>                   | <b>1497</b>           | DSR  | 1022 | CTI | 279 | 56          |
|               | Adirondack                        | <b>1762</b>                   | <b>1111</b>           | CTI  | 1251 | RTE | 319 | 64          |
|               | Ethan Allen Express               | <b>1352</b>                   | <b>1466</b>           | CTI  | 1025 | RTE | 253 | 64          |
|               | Lake Shore Ltd                    | 668                           | <b>1056</b>           | CTI  | 398  | RTE | 101 | 64          |
|               | Maple Leaf                        | <b>1398</b>                   | <b>921</b>            | CTI  | 1119 | RTE | 137 | 64          |
|               | New York - Albany                 | 876                           | <b>984</b>            | CTI  | 539  | DSR | 117 | 64          |
|               | New York - Niagara Falls          | 856                           | <b>1172</b>           | CTI  | 508  | DSR | 97  | 64          |
|               | Richmond / Newport News / Norfolk | <b>1647</b>                   | <b>1531</b>           | DSR  | 971  | CTI | 499 | 56          |
|               | Vermonter                         | <b>2316</b>                   | <b>2149</b>           | DSR  | 1371 | CTI | 786 | 56          |
| NECR          | Vermonter                         | 452                           | 716                   | DSR  | 424  | DCS | 23  | 192         |
| NMDOT         | Southwest Chief                   | <b>1764</b>                   | <b>2103</b>           | CTI  | 1352 | DCS | 217 | 80          |
| SCRRA         | Coast Starlight                   | <b>1410</b>                   | <b>1559</b>           | PTI  | 894  | CTI | 272 | 48          |
|               | Pacific Surfliner                 | <b>929</b>                    | <b>935</b>            | PTI  | 357  | CTI | 323 | 95          |
| SDNRR         | Pacific Surfliner                 | <b>1331</b>                   | <b>1047</b>           | CTI  | 493  | PTI | 406 | 60          |
| Sounder       | Cascades                          | <b>1015</b>                   | <b>997</b>            | PTI  | 617  | CTI | 323 | 20          |
|               | Coast Starlight                   | <b>2766</b>                   | <b>2450</b>           | PTI  | 1742 | CTI | 903 | 20          |
| TRE           | Texas Eagle                       | <b>1353</b>                   | <b>1138</b>           | RTE  | 946  | CTI | 392 | 33          |
| VTR           | Ethan Allen Express               | 308                           | <b>1069</b>           | DSR  | 259  | DCS | 30  | 91          |

The numbers included in this document are preliminary and are for informational purposes only.

Excludes hosts with fewer than 15 route miles.

Delays on the Amtrak-owned portion of the Northeast Corridor are shown in a separate report, with tighter delay standards.

Northeast Regional: Roanoke includes all trains between Roanoke and points on the NEC; Richmond / Newport News / Norfolk includes all trains between these locations and points on the NEC.

# Minutes of Delay per 10K Train Miles by Service for December 2025

| Service                              |                                   | Host  | Total Host Responsible Delays |             | Largest Two Delay Categories - Current Month |      |     |     | Route Miles |
|--------------------------------------|-----------------------------------|-------|-------------------------------|-------------|--|------|-----|-----|-------------|
|                                      |                                   |       | Current                       | Most        | #1   | #2   |     |     |             |
| <b>Target</b>                        |                                   |       | <b>900</b>                    | <b>900</b>  |  |      |     |     |             |
| <b>Acela</b>                         |                                   |       |                               |             |  |      |     |     |             |
| Acela                                |                                   | MNRR  | <b>1580</b>                   | <b>1497</b> | DSR  | 1022 | CTI | 279 | 56          |
| <b>All Other NEC Corridor Routes</b> |                                   |       |                               |             |  |      |     |     |             |
| Northeast Regional                   | Richmond / Newport News / Norfolk | CSX   | 899                           | <b>1163</b> | FTI  | 213  | PTI | 194 | 189         |
|                                      |                                   | NS    | 285                           | 448         | DSR  | 125  | RTE | 72  | 81          |
|                                      |                                   | MNRR  | <b>1647</b>                   | <b>1531</b> | DSR  | 971  | CTI | 499 | 56          |
|                                      |                                   | NS    | 482                           | 516         | PTI  | 207  | FTI | 114 | 216         |
|                                      | Roanoke                           |       |                               |             |  |      |     |     |             |
|                                      | Springfield Shuttles              | MADOT | 605                           | 321         | FTI  | 279  | DCS | 107 | 36          |

# Minutes of Delay per 10K Train Miles by Service for December 2025

| Service                        | Host                            | Total Host Responsible Delays |            | Largest Two Delay Categories - Current Month |      |      |     | Route Miles |     |
|--------------------------------|---------------------------------|-------------------------------|------------|--|------|------|-----|-------------|-----|
|                                |                                 | Current                       | Most       | #1   | #2   |      |     |             |     |
| <b>Target</b>                  |                                 | <b>900</b>                    | <b>900</b> |  |      |      |     |             |     |
| <b>Non-NEC Corridor Routes</b> |                                 |                               |            |  |      |      |     |             |     |
| Borealis                       | CPKC                            | 674                           | 890        | DCS  | 185  | DSR  | 164 | 376         |     |
|                                | Metra                           | 1300                          | 1507       | CTI  | 700  | DSR  | 253 | 33          |     |
| Capitol Corridor               | UP                              | 656                           | 574        | PTI  | 361  | RTE  | 91  | 171         |     |
| Carolinian                     | CSX                             | 1245                          | 1507       | PTI  | 351  | FTI  | 302 | 295         |     |
|                                | NS                              | 581                           | 638        | PTI  | 410  | FTI  | 60  | 202         |     |
| Cascades                       | BNSF                            | 871                           | 1033       | FTI  | 262  | PTI  | 214 | 317         |     |
|                                | UP                              | 1175                          | 1460       | PTI  | 460  | FTI  | 375 | 125         |     |
|                                | Sounder                         | 1015                          | 997        | PTI  | 617  | CTI  | 323 | 20          |     |
| Downeaster                     | CSX                             | 638                           | 773        | PTI  | 342  | DCS  | 155 | 107         |     |
|                                | MBTA                            | 614                           | 810        | DCS  | 306  | CTI  | 155 | 38          |     |
| Empire                         | Adirondack                      | CPKC                          | 972        | 1149   | PTI  | 546  | DCS | 281         | 178 |
|                                |                                 | Amtrak                        | 291        | 516  | PTI  | 173  | DCS | 49          | 100 |
|                                |                                 | CN-Canada                     | 2635       | 3238   | DSR  | 1053 | RTE | 752         | 49  |
|                                |                                 | MNRR                          | 1762       | 1111   | CTI  | 1251 | RTE | 319         | 64  |
|                                | Ethan Allen Express             | CPKC                          | 1822       | 1758   | PTI  | 1193 | DCS | 516         | 60  |
|                                |                                 | Amtrak                        | 282        | 486  | CTI  | 113  | PTI | 52          | 100 |
|                                |                                 | MNRR                          | 1352       | 1466   | CTI  | 1025 | RTE | 253         | 64  |
|                                |                                 | VTR                           | 308        | 1069   | DSR  | 259  | DCS | 30          | 91  |
|                                | Maple Leaf                      | CSX                           | 514        | 789  | FTI  | 299  | PTI | 71          | 298 |
|                                |                                 | Amtrak                        | 626        | 674  | RTE  | 191  | DCS | 151         | 109 |
|                                |                                 | MNRR                          | 1398       | 921  | CTI  | 1119 | RTE | 137         | 64  |
|                                | New York - Albany               | Amtrak                        | 264        | 474  | PTI  | 78   | DCS | 70          | 81  |
|                                |                                 | MNRR                          | 876        | 984  | CTI  | 539  | DSR | 117         | 64  |
|                                | New York - Niagara Falls        | CSX                           | 505        | 662  | FTI  | 300  | RTE | 69          | 296 |
|                                |                                 | Amtrak                        | 273        | 478  | PTI  | 121  | DCS | 58          | 109 |
|                                |                                 | MNRR                          | 856        | 1172   | CTI  | 508  | DSR | 97          | 64  |
| Gold Runner                    | BNSF                            | 1043                          | 1247       | PTI  | 509  | FTI  | 301 | 284         |     |
|                                | UP                              | 1018                          | 1114       | PTI  | 553  | DCS  | 179 | 88          |     |
| Heartland Flyer                | BNSF                            | 1187                          | 2066       | DSR  | 863  | FTI  | 281 | 236         |     |
| Hiawatha                       | CPKC                            | 208                           | 180        | DCS  | 91   | PTI  | 36  | 53          |     |
|                                | Metra                           | 1716                          | 2113       | CTI  | 1046 | DSR  | 268 | 29          |     |
| Illinois                       | Carl Sandburg / Illinois Zephyr | BNSF                          | 800        | 765  | FTI  | 426  | CTI | 102         | 257 |
|                                | Illini / Saluki                 | CN-IC                         | 1070       | 764  | DSR  | 467  | FTI | 280         | 304 |
|                                | Lincoln Service                 | CN-IC                         | 2123       | 2072   | FTI  | 1603 | DCS | 230         | 35  |
|                                |                                 | UP                            | 977        | 1004   | PTI  | 373  | FTI | 340         | 231 |
| Lincoln / Missouri             | CN-IC                           | 2172                          | 2571       | FTI  | 1378 | RTE  | 320 | 35          |     |
|                                | UP                              | 787                           | 983        | PTI  | 323  | FTI  | 281 | 502         |     |
| Mardi Gras Service             | CSX                             | 1707                          | 1975       | FTI  | 828  | PTI  | 409 | 137         |     |
| Michigan                       | Blue Water                      | CN-IC                         | 1076       | 899  | DSR  | 463  | FTI | 391         | 159 |
|                                |                                 | NS                            | 1467       | 1845   | FTI  | 935  | DCS | 315         | 39  |
|                                |                                 | Amtrak                        | 282        | 293  | PTI  | 165  | DCS | 66          | 99  |
|                                |                                 | MIDOT                         | 353        | 343  | PTI  | 329  | RTE | 24          | 22  |
|                                | Pere Marquette                  | CSX                           | 1180       | 308  | FTI  | 1051 | DCS | 104         | 135 |
|                                |                                 | NS                            | 1011       | 1353   | FTI  | 523  | PTI | 228         | 39  |
|                                | Wolverine                       | CN-IC                         | 3753       | 3062   | DSR  | 2570 | FTI | 755         | 27  |
|                                |                                 | NS                            | 1555       | 1749   | FTI  | 1168 | PTI | 137         | 39  |
|                                |                                 | Amtrak                        | 319        | 450  | PTI  | 224  | FTI | 26          | 99  |
|                                |                                 | MIDOT                         | 753        | 685  | PTI  | 593  | FTI | 76          | 134 |
| Missouri                       | UP                              | 693                           | 1014       | FTI  | 469  | PTI  | 99  | 271         |     |
| Pacific Surfliner              | BNSF                            | 647                           | 1050       | FTI  | 222  | DCS  | 163 | 22          |     |
|                                | UP                              | 984                           | 1029       | PTI  | 383  | DCS  | 312 | 174         |     |
|                                | SCRRA                           | 929                           | 935        | PTI  | 357  | CTI  | 323 | 95          |     |
|                                | SDNRR                           | 1331                          | 1047       | CTI  | 493  | PTI  | 406 | 60          |     |
| Pennsylvanian                  | NS                              | 325                           | 623        | RTE  | 117  | FTI  | 80  | 249         |     |
| Piedmont                       | NS                              | 504                           | 633        | PTI  | 254  | DCS  | 88  | 173         |     |
| Vermont                        | MADOT                           | 228                           | 393        | DCS  | 222  | PTI  | 7   | 50          |     |
|                                | MNRR                            | 2316                          | 2149       | DSR  | 1371 | CTI  | 786 | 56          |     |
|                                | NECR                            | 452                           | 716        | DSR  | 424  | DCS  | 23  | 192         |     |

# Minutes of Delay per 10K Train Miles by Service for December 2025

| Service                     | Host    | Total Host Responsible Delays |            | Largest Two Delay Categories - Current Month |      |     |     | Route Miles |
|-----------------------------|---------|-------------------------------|------------|--|------|-----|-----|-------------|
|                             |         | Current                       | Most       | #1   | #2   |     |     |             |
| <b>Target</b>               |         | <b>900</b>                    | <b>900</b> |  |      |     |     |             |
| <b>Long-Distance Routes</b> |         |                               |            |  |      |     |     |             |
| Auto Train                  | CSX     | 1043                          | 1183       | FTI  | 459  | PTI | 236 | 898         |
|                             | FR      | 3671                          | 4409       | CTI  | 2899 | DSR | 435 | 16          |
| California Zephyr           | BNSF    | 696                           | 800        | FTI  | 300  | DSR | 86  | 1027        |
|                             | UP      | 678                           | 987        | FTI  | 280  | DSR | 157 | 1381        |
| Cardinal                    | CSX     | 718                           | 870        | DCS  | 312  | FTI | 247 | 703         |
|                             | NS      | 1167                          | 1397       | PTI  | 675  | FTI | 222 | 79          |
|                             | BBrRR   | 1076                          | 1626       | PTI  | 500  | FTI | 463 | 132         |
| City Of New Orleans         | CN-IC   | 1118                          | 1114       | DSR  | 408  | FTI | 312 | 930         |
| Coast Starlight             | BNSF    | 664                           | 1077       | RTE  | 189  | DSR | 140 | 158         |
|                             | UP      | 1046                          | 1333       | FTI  | 307  | PTI | 264 | 1162        |
|                             | SCRRA   | 1410                          | 1559       | PTI  | 894  | CTI | 272 | 48          |
|                             | Sounder | 2766                          | 2450       | PTI  | 1742 | CTI | 903 | 20          |
| Crescent                    | NS      | 700                           | 885        | FTI  | 293  | PTI | 140 | 1141        |
| Empire Builder              | BNSF    | 767                           | 793        | FTI  | 483  | DSR | 91  | 2147        |
|                             | CPKC    | 504                           | 885        | FTI  | 181  | PTI | 129 | 384         |
|                             | Metra   | 1603                          | 2651       | CTI  | 1077 | PTI | 203 | 29          |
| Floridian                   | CSX     | 839                           | 975        | FTI  | 297  | PTI | 165 | 1413        |
|                             | NS      | 793                           | 895        | FTI  | 382  | PTI | 184 | 518         |
|                             | Fla DOT | 900                           | 1012       | CTI  | 611  | DSR | 111 | 70          |
|                             | FR      | 2313                          | 2558       | DSR  | 1055 | CTI | 810 | 61          |
| Lake Shore Ltd              | CSX     | 830                           | 698        | FTI  | 466  | PTI | 124 | 741         |
|                             | NS      | 881                           | 939        | FTI  | 430  | RTE | 236 | 339         |
|                             | MNRR    | 668                           | 1056       | CTI  | 398  | RTE | 101 | 64          |
| Palmetto                    | CSX     | 913                           | 976        | FTI  | 396  | PTI | 274 | 659         |
| Silver Meteor               | CSX     | 712                           | 832        | FTI  | 295  | PTI | 170 | 1152        |
|                             | Fla DOT | 895                           | 1020       | CTI  | 466  | RTE | 231 | 70          |
|                             | FR      | 2221                          | 2469       | CTI  | 1037 | DSR | 576 | 61          |
| Southwest Chief             | BNSF    | 785                           | 887        | FTI  | 315  | DSR | 183 | 2206        |
|                             | NMDOT   | 1764                          | 2103       | CTI  | 1352 | DCS | 217 | 80          |
| Sunset Ltd                  | BNSF    | 940                           | 1228       | DSR  | 452  | DCS | 234 | 190         |
|                             | UP      | 829                           | 1223       | FTI  | 401  | RTE | 207 | 1784        |
| Texas Eagle                 | BNSF    | 1515                          | 1813       | DSR  | 682  | FTI | 400 | 116         |
|                             | CN-IC   | 1942                          | 2340       | FTI  | 1491 | DCS | 212 | 35          |
|                             | UP      | 1026                          | 1460       | FTI  | 528  | DSR | 196 | 1073        |
|                             | TRE     | 1353                          | 1138       | RTE  | 946  | CTI | 392 | 33          |

The numbers included in this document are preliminary and are for informational purposes only.

Excludes hosts with fewer than 15 route miles.

Delays on the Amtrak-owned portion of the Northeast Corridor are shown in a separate report, with tighter delay standards.

Northeast Regional: Roanoke includes all trains between Roanoke and points on the NEC; Richmond / Newport News /

Norfolk includes all trains between these locations and points on the NEC.



| Service                           | All-Stations OTP |                       | Customer OTP  |                       | Avg Mins Late per Late Rider** |                       |
|-----------------------------------|------------------|-----------------------|---------------|-----------------------|--------------------------------|-----------------------|
|                                   | Current Month    | Most Recent 12 Months | Current Month | Most Recent 12 Months | Current Month                  | Most Recent 12 Months |
| <b>Amtrak System</b>              | <b>77.4%</b>     | <b>75.7%</b>          | <b>74.8%</b>  | <b>75.3%</b>          | <b>55</b>                      | <b>56</b>             |
| <b>NEC Corridor Routes</b>        | <b>81.3%</b>     | <b>82.1%</b>          | <b>75.7%</b>  | <b>79.4%</b>          | <b>48</b>                      | <b>44</b>             |
| <b>Minimum Standard</b>           |                  |                       | <b>80.0%</b>  | <b>80.0%</b>          |                                |                       |
| Acela*                            | 72.8%            | 82.3%                 | 68.0%         | 80.6%                 | 49                             | 44                    |
| Keystone                          | 90.7%            | 91.8%                 | 86.9%         | 89.4%                 | 35                             | 34                    |
| Northeast Regional                | 80.2%            | 78.7%                 | 75.2%         | 76.8%                 | 50                             | 44                    |
| On Spine Northeast Regional       | 78.3%            | 81.9%                 | 75.0%         | 80.2%                 | 56                             | 45                    |
| Richmond / Newport News / Norfolk | 78.9%            | 73.5%                 | 73.6%         | 70.3%                 | 38                             | 44                    |
| Roanoke                           | 83.2%            | 79.6%                 | 80.5%         | 76.2%                 | 52                             | 49                    |
| Springfield Shuttles              | 88.9%            | 80.2%                 | 87.8%         | 86.0%                 | 38                             | 38                    |
| <b>Non-NEC Corridor Routes</b>    | <b>80.9%</b>     | <b>80.2%</b>          | <b>77.2%</b>  | <b>76.6%</b>          | <b>46</b>                      | <b>45</b>             |
| <b>Minimum Standard</b>           |                  |                       | <b>80.0%</b>  | <b>80.0%</b>          |                                |                       |
| Borealis                          | 81.1%            | 68.4%                 | 75.6%         | 60.0%                 | 51                             | 47                    |
| Capitol Corridor                  | 89.1%            | 91.7%                 | 89.7%         | 89.7%                 | 50                             | 36                    |
| Carolinian                        | 73.9%            | 66.6%                 | 72.4%         | 65.4%                 | 44                             | 51                    |
| Cascades                          | 80.1%            | 74.5%                 | 77.1%         | 70.4%                 | 41                             | 42                    |
| Downeaster                        | 92.6%            | 85.5%                 | 86.5%         | 82.4%                 | 34                             | 34                    |
| Empire                            | 78.6%            | 77.6%                 | 77.5%         | 75.5%                 | 43                             | 44                    |
| Adirondack                        | 69.8%            | 71.3%                 | 52.0%         | 58.9%                 | 39                             | 46                    |
| Berkshire Flyer                   | -                | 51.9%                 | -             | 49.9%                 | -                              | 65                    |
| Ethan Allen Express               | 82.3%            | 70.8%                 | 73.3%         | 64.8%                 | 29                             | 40                    |
| Maple Leaf                        | 49.4%            | 64.5%                 | 43.5%         | 61.8%                 | 49                             | 52                    |
| New York - Albany                 | 89.9%            | 87.1%                 | 87.1%         | 82.7%                 | 40                             | 38                    |
| New York - Niagara Falls          | 81.4%            | 80.7%                 | 80.2%         | 78.3%                 | 50                             | 44                    |
| Gold Runner                       | 64.7%            | 68.9%                 | 62.1%         | 63.1%                 | 49                             | 47                    |
| Heartland Flyer                   | 86.9%            | 61.8%                 | 89.1%         | 49.4%                 | 31                             | 48                    |
| Hiawatha                          | 89.7%            | 88.4%                 | 83.6%         | 85.9%                 | 31                             | 37                    |
| Illinois                          | 73.6%            | 77.5%                 | 66.2%         | 73.6%                 | 51                             | 45                    |
| Carl Sandburg / Illinois Zephyr   | 80.1%            | 81.6%                 | 73.4%         | 79.6%                 | 40                             | 42                    |
| Illini / Saluki                   | 75.1%            | 81.4%                 | 66.7%         | 80.2%                 | 47                             | 46                    |
| Lincoln Service                   | 67.8%            | 71.6%                 | 63.1%         | 66.9%                 | 57                             | 44                    |
| Lincoln / Missouri                | 56.7%            | 52.1%                 | 56.1%         | 47.7%                 | 46                             | 53                    |
| Mardi Gras Service                | 95.4%            | 92.9%                 | 92.2%         | 87.6%                 | 32                             | 40                    |
| Michigan                          | 65.2%            | 72.0%                 | 59.2%         | 69.0%                 | 60                             | 52                    |
| Blue Water                        | 58.8%            | 75.2%                 | 53.7%         | 67.3%                 | 74                             | 55                    |
| Pere Marquette                    | 81.3%            | 89.1%                 | 72.2%         | 85.0%                 | 73                             | 52                    |
| Wolverine                         | 64.9%            | 68.6%                 | 58.2%         | 66.1%                 | 52                             | 51                    |
| Missouri                          | 80.5%            | 72.3%                 | 80.0%         | 68.4%                 | 47                             | 52                    |
| Pacific Surfliner                 | 87.7%            | 87.0%                 | 84.9%         | 86.3%                 | 51                             | 44                    |
| Pennsylvanian                     | 87.6%            | 80.5%                 | 89.5%         | 81.1%                 | 35                             | 46                    |
| Piedmont                          | 87.3%            | 82.8%                 | 82.9%         | 76.2%                 | 29                             | 37                    |
| Vermonteer                        | 70.0%            | 74.8%                 | 61.8%         | 73.1%                 | 36                             | 44                    |
| <b>Long-Distance Routes</b>       | <b>60.6%</b>     | <b>51.7%</b>          | <b>64.6%</b>  | <b>55.2%</b>          | <b>89</b>                      | <b>96</b>             |
| <b>Minimum Standard</b>           |                  |                       | <b>80.0%</b>  | <b>80.0%</b>          |                                |                       |
| Auto Train                        | 93.5%            | 70.2%                 | 87.2%         | 54.4%                 | 45                             | 99                    |
| California Zephyr                 | 64.8%            | 52.0%                 | 72.4%         | 54.2%                 | 84                             | 119                   |
| Cardinal                          | 65.6%            | 52.1%                 | 61.5%         | 52.2%                 | 55                             | 79                    |
| City Of New Orleans               | 78.5%            | 53.1%                 | 79.1%         | 68.2%                 | 67                             | 78                    |
| Coast Starlight                   | 66.5%            | 60.6%                 | 67.7%         | 65.3%                 | 75                             | 85                    |
| Crescent                          | 78.5%            | 69.8%                 | 83.0%         | 74.4%                 | 58                             | 69                    |
| Empire Builder                    | 49.4%            | 50.0%                 | 54.1%         | 52.6%                 | 168                            | 122                   |
| Floridian                         | 36.5%            | 30.9%                 | 39.8%         | 30.9%                 | 99                             | 107                   |
| Lake Shore Ltd                    | 69.6%            | 67.1%                 | 67.7%         | 72.3%                 | 82                             | 64                    |
| Palmetto                          | 78.3%            | 68.2%                 | 77.2%         | 69.0%                 | 40                             | 51                    |
| Silver Meteor                     | 61.2%            | 56.0%                 | 61.5%         | 53.8%                 | 65                             | 73                    |
| Southwest Chief                   | 37.6%            | 32.4%                 | 38.2%         | 33.6%                 | 108                            | 124                   |
| Sunset Ltd                        | 69.4%            | 53.0%                 | 78.6%         | 63.1%                 | 40                             | 98                    |
| Texas Eagle                       | 66.9%            | 44.9%                 | 67.4%         | 50.0%                 | 57                             | 92                    |

The numbers included in this document are preliminary and are for informational purposes only.

Northeast Regional: Roanoke includes all trains between Roanoke and points on the NEC; Richmond/Newport News/Norfolk includes all trains between these locations and points on the NEC.

\* Acela on-time performance target is 90.0%

\*\* Excludes on-time Customers



### Host Railroad Responsible Delays

| Code | Code Description             | Explanation  |
|------|------------------------------|--|
| CTI  | Commuter Train Interference  | Delays for meeting or following commuter trains  |
| DCS  | Signal Delays                | Signal failure or All Other signal delays, wayside defect-detector false-alarms, defective road crossing protection, efficiency tests, drawbridge stuck open |
| DMW  | Maintenance of Way           | Maintenance of Way delays including holds for track repairs or MW foreman to clear   |
| DSR  | Slow Order Delays            | Temporary slow orders, except heat or cold orders  |
| DTR  | Detour                       | Delays from detours  |
| FTI  | Freight Train Interference   | Delays from freight trains   |
| PTI  | Passenger Train Interference | Delays for meeting or following All Other passenger trains   |
| RTE  | Routing                      | Routing-dispatching delays including diversions, late track bulletins, etc.  |

### Amtrak Responsible Delays

| Code | Code Description       | Explanation  |
|------|------------------------|--|
| ADA  | Passenger Related      | All delays related to disabled passengers, wheel chair lifts, guide dogs, etc.                   |
| CAR  | Car Failure            | Mechanical failure on all types of cars  |
| CCR  | Cab Car Failure        | Mechanical failure on Cab Cars   |
| CON  | Hold for Connection    | Holding for connections from All Other trains or buses.  |
| ENG  | Locomotive Failure     | Mechanical failure on engines.   |
| HLD  | Passenger Related      | All delays related to passengers, checked-baggage, large groups, etc.                            |
| INJ  | Injury Delay           | Delay due to injured passengers or employees.  |
| ITI  | Initial Terminal Delay | Delay at initial terminal due to late arriving inbound trains causing late release of equipment. |
| OTH  | Miscellaneous Delays   | Lost-on-run, heavy trains, unable to make normal speed, etc.                                     |
| SVS  | Servicing              | All switching and servicing delays   |
| SYS  | Crew & System          | Delays related to crews including lateness, lone-engineer delays                                 |

### Third-Party Delays

| Code | Code Description     | Explanation   |
|------|----------------------|---|
| CUI  | Customs              | U.S. and Canadian customs delays; Immigration-related delays  |
| DBS  | Debris               | Debris strikes  |
| MBO  | Drawbridge Openings  | Movable bridge openings for marine traffic where no bridge failure is involved  |
| NOD  | Unused Recovery Time | Wait for departure time   |
| POL  | Police-Related       | Police/fire department holds on right-of-way or on-board trains   |
| TRS  | Trespassers          | Trespasser incidents including road crossing accidents, trespasser / animal strikes, vehicle stuck on track ahead, bridge strikes |
| WTR  | Weather-Related      | All weather-related delays including floods/washouts, earthquake-related delays, heat or cold orders, slippery rail due to leaves |

\*These delay codes are applicable to Off-NEC routes only.