



Host Railroad Report

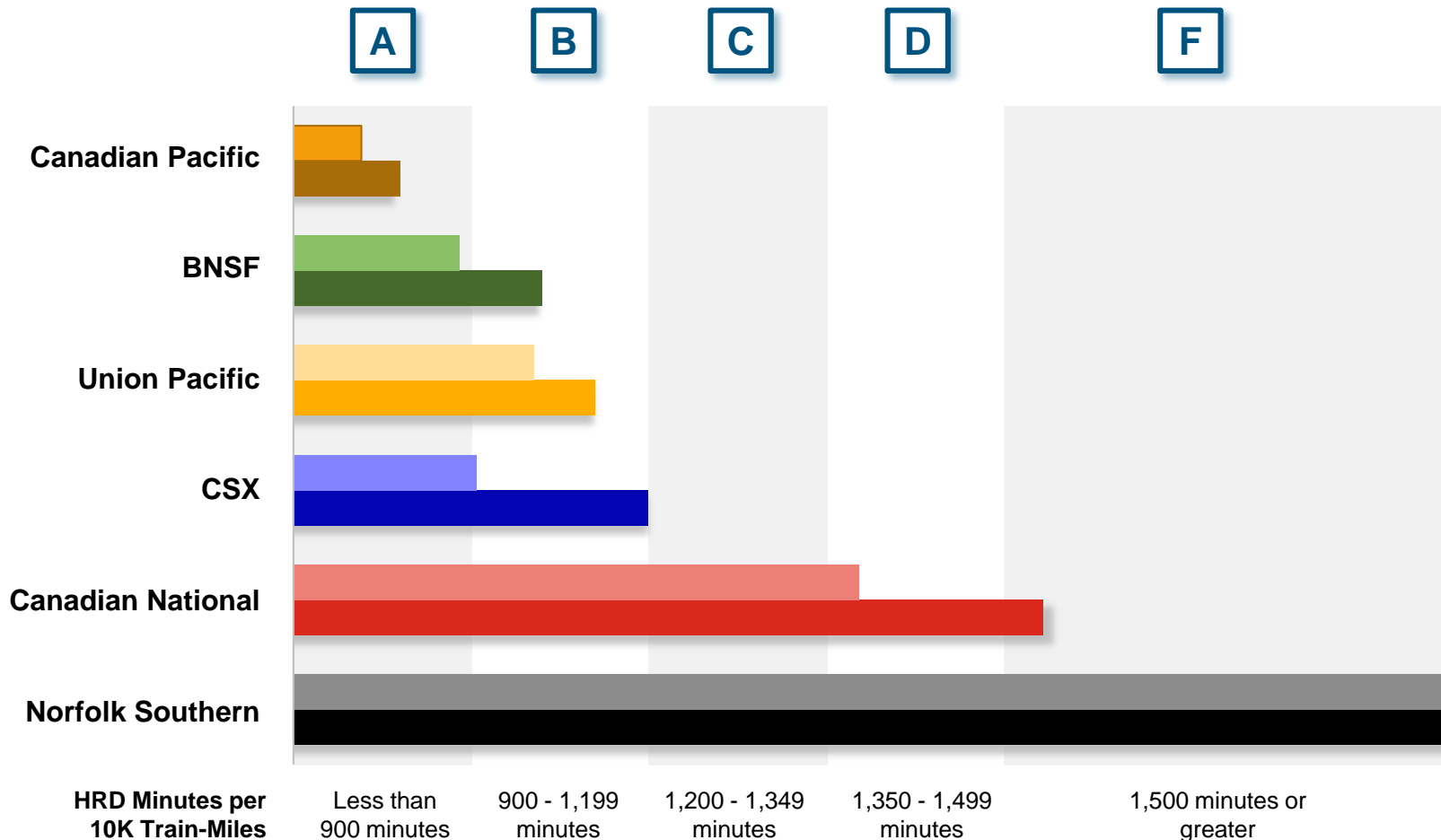
Amtrak Train Performance on Host Railroads

Data through December 2018

Host Railroad Report Card Update

Current Month and 1 Year Snapshot

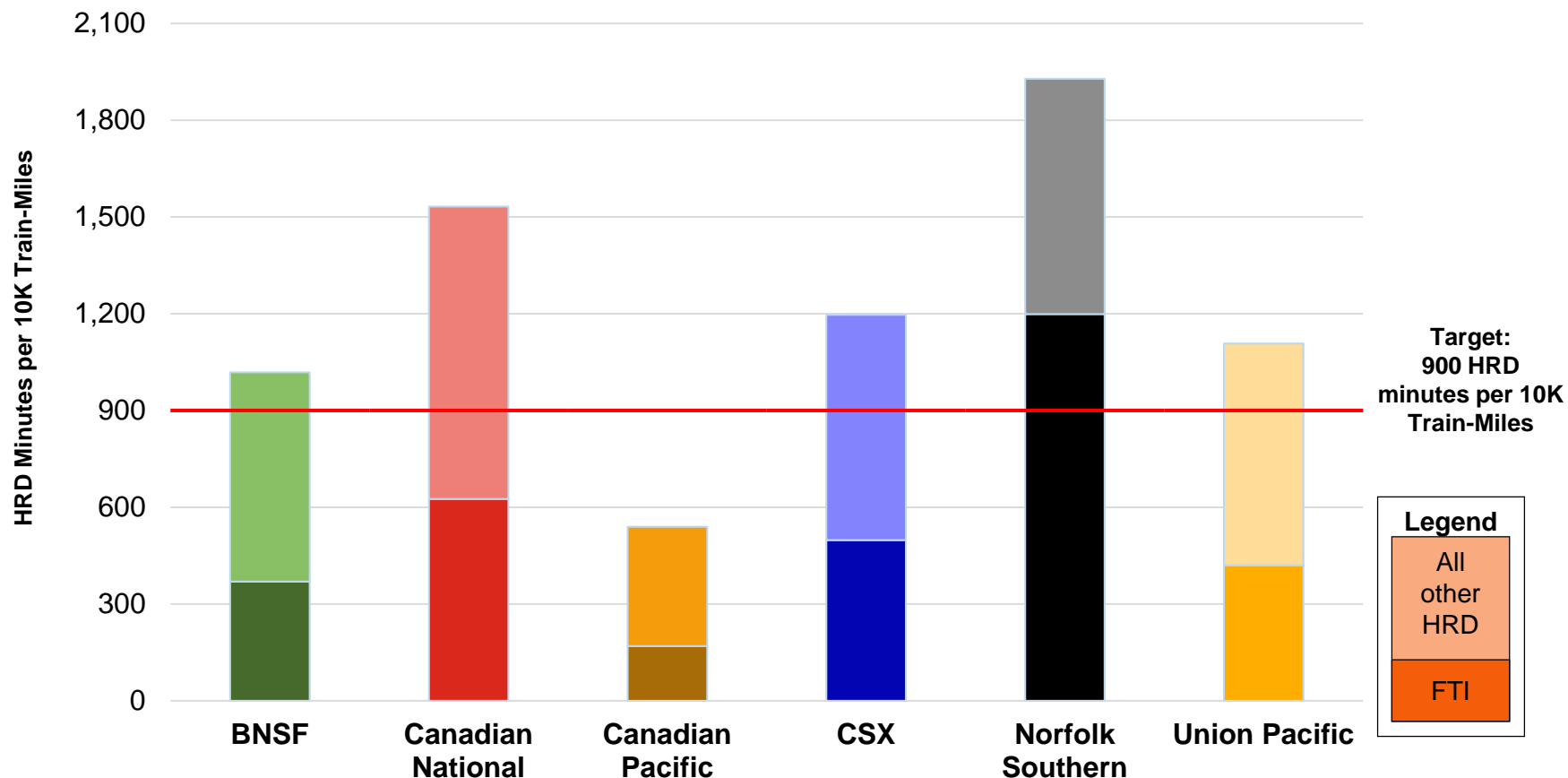
A monthly update of the Host Railroad Report Card, which grades the six major host railroads based on host responsible delay (HRD) minutes per 10,000 train-miles for the current month (lighter shade) and the most recent 12 months.



Total Host-Responsible Delays

1 Year Snapshot

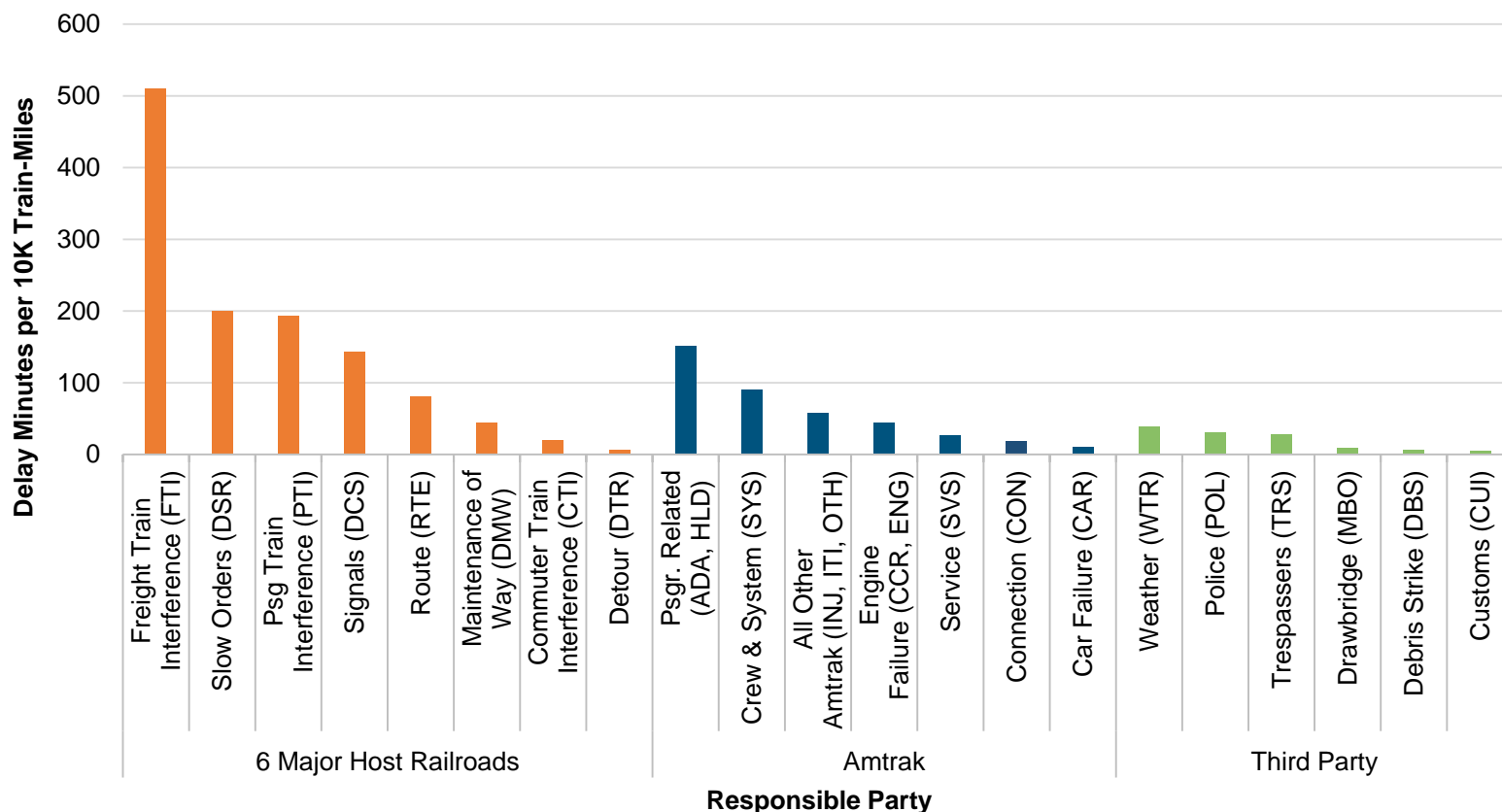
Total host-responsible delay (HRD) minutes per 10,000 train-miles incurred by Amtrak trains on the six major host railroads, with delays attributable to freight train interference (FTI) shaded.



Delays to Amtrak Trains by Responsible Party

1 Year Snapshot

Delay minutes per 10,000 train-miles on the six major host railroads categorized by delay type and responsible party.

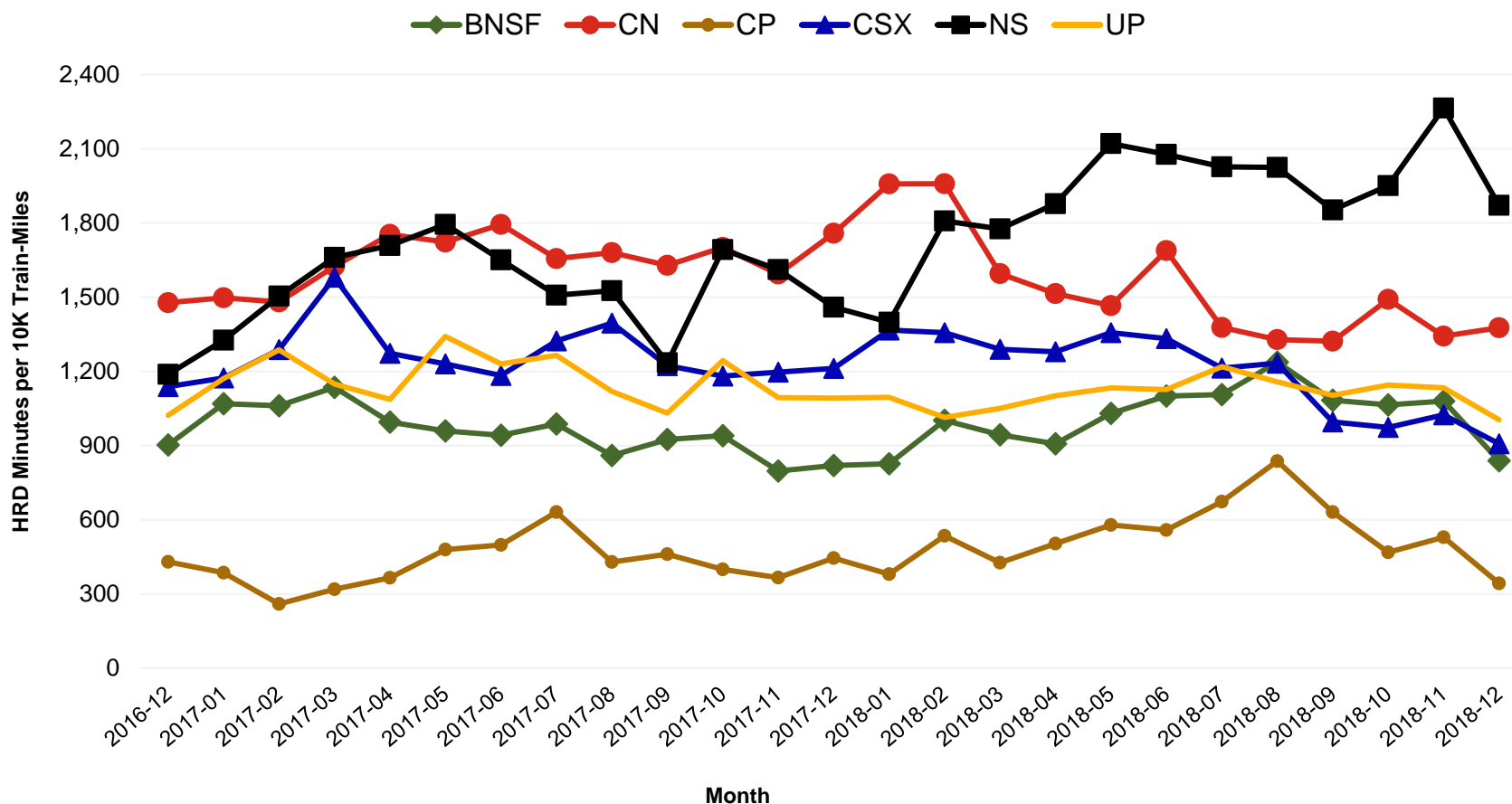


Responsible Party	6 Major Host Railroads	Amtrak	Third Party
Delay Minutes per 10K Train-Miles	1,196	381	115
Percentage of Total Delays	70.7%	22.5%	6.8%

Total Host-Responsible Delays

2 Year Snapshot

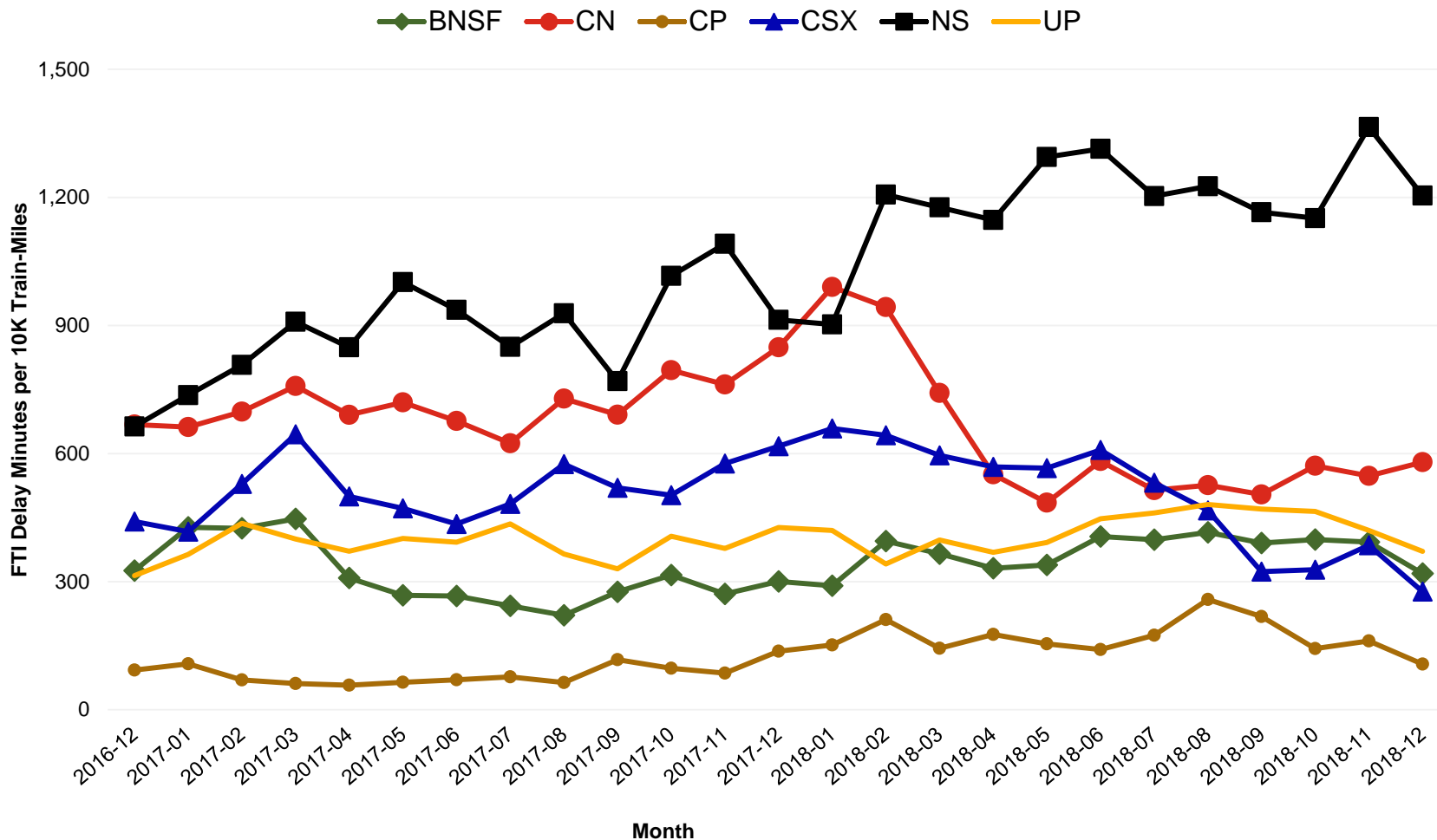
Total host-responsible delay (HRD) minutes per 10,000 train-miles incurred by Amtrak trains on each of the six major host railroads for the most recent two years.



Freight Train Interference Delays

2 Year Snapshot

Total delay minutes per 10,000 train-miles attributable to freight train interference (FTI) incurred by Amtrak trains on each of the six major host railroads for the most recent two years.



Minutes of Delay per 10K Train Miles by Host for December 2018

Host	Service	Total Host Responsible Delays		Largest Two Delay Categories - Current Month				Route Miles
		Current Month	Most Recent 12 Months	#1		#2		
Target		900	900					
BNSF	California Zephyr	785	1111	FTI	292	DSR	215	1027
	Carl Sandburg / Illinois Zephyr	464	613	FTI	219	RTE	88	257
	Cascades	1369	1354	DSR	393	FTI	375	343
	Coast Starlight	687	767	FTI	219	DSR	171	186
	Empire Builder	668	1035	FTI	383	DSR	139	2147
	Heartland Flyer	1595	2133	DSR	857	FTI	611	236
	Pacific Surfliner	960	1232	DCS	263	CTI	199	22
	San Joaquins	902	1022	PTI	402	FTI	295	284
	Southwest Chief	654	716	FTI	251	DCS	124	2206
	Sunset Ltd	1894	1600	FTI	865	DSR	695	190
Texas Eagle	1904	1872	DSR	1111	FTI	553	116	
CN	Adirondack	2803	3216	DSR	1107	RTE	803	49
	Blue Water	876	851	FTI	743	DCS	53	159
	City Of New Orleans	1118	1274	FTI	582	RTE	172	930
	Illini / Saluki	1460	1796	DCS	785	FTI	301	304
	Lincoln Service	1739	1693	FTI	1240	DCS	195	35
	Texas Eagle	2674	2670	FTI	1789	RTE	311	35
	Wolverine	2499	1850	FTI	882	DSR	739	27
CP	Adirondack	513	752	PTI	426	DCS	54	178
	Empire Builder	362	675	FTI	196	DCS	48	384
	Ethan Allen Express	287	667	PTI	222	RTE	24	60
	Hiawatha	249	273	FTI	77	CTI	38	53
CSX	Auto Train	1212	1276	FTI	480	PTI	387	898
	Capitol Ltd	725	1202	FTI	242	RTE	187	307
	Cardinal	694	1014	FTI	315	DCS	149	703
	Carolinian	1352	1726	FTI	429	PTI	356	295
	Hoosier	776	902	FTI	247	DCS	237	175
	Lake Shore Ltd	725	1039	FTI	244	RTE	173	741
	Maple Leaf	813	1357	RTE	305	FTI	238	298
	New York - Niagara Falls	686	1119	RTE	253	FTI	241	296
	Palmetto	857	1120	PTI	307	FTI	242	659
	Pere Marquette	392	465	FTI	219	DCS	126	135
	Richmond / Newport News / Norfolk	1180	1781	DCS	255	DSR	244	189
	Silver Meteor	719	890	FTI	272	PTI	176	1152
	Silver Star	1003	1193	PTI	289	FTI	210	1209
NS	Blue Water	3168	3188	FTI	2235	DCS	431	39
	Capitol Ltd	2821	2686	FTI	2268	RTE	197	481
	Cardinal	1977	1527	FTI	972	PTI	542	79
	Carolinian	911	1028	PTI	387	FTI	198	202
	Crescent	1780	1973	FTI	1081	DSR	245	1141
	Lake Shore Ltd	3208	3035	FTI	2182	PTI	678	339
	Pennsylvanian	1036	1374	FTI	758	RTE	165	249
	Pere Marquette	2790	2503	FTI	1887	PTI	315	39
	Piedmont	978	1229	FTI	412	PTI	225	173
	Richmond / Newport News / Norfolk	552	453	DSR	205	DCS	145	81
	Roanoke	801	758	FTI	545	DCS	134	216
	Silver Star	1505	996	FTI	628	DCS	402	28
	Wolverine	4048	3215	FTI	2495	DCS	858	39
UP	California Zephyr	525	718	FTI	207	PTI	143	1381
	Capitol Corridor	644	574	PTI	247	DSR	164	171
	Cascades	1133	1209	FTI	488	PTI	465	125
	Coast Starlight	1091	1238	PTI	386	FTI	307	1162
	Lincoln Service	848	1009	FTI	321	PTI	302	231
	Missouri	644	753	FTI	386	PTI	85	271
	Pacific Surfliner	1564	1366	PTI	826	DCS	273	174
	San Joaquins	1018	1181	PTI	500	DCS	228	88
	Sunset Ltd	1722	1750	FTI	1124	DSR	180	1784
	Texas Eagle	1526	1838	FTI	776	DSR	247	1073

Minutes of Delay per 10K Train Miles by Host for December 2018

Host	Service	Total Host Responsible Delays		Largest Two Delay Categories - Current Month				Route Miles
		Current Month	Most Recent 12 Months	#1		#2		
Target		900	900					
Amtrak	Adirondack	313	533	PTI	159	RTE	84	100
	Blue Water	249	777	PTI	132	DCS	81	99
	Ethan Allen Express	373	678	PTI	175	RTE	104	100
	Maple Leaf	328	469	DCS	117	PTI	114	109
	New York - Albany	199	382	DCS	64	PTI	54	81
	New York - Niagara Falls	284	484	PTI	114	DCS	92	109
	Wolverine	477	1059	PTI	285	DCS	158	99
	BBrRR	Cardinal	1299	1290	PTI	536	FTI	520
Fla DOT	Silver Meteor	2325	1317	DSR	1552	CTI	498	68
	Silver Star	1991	1430	DSR	1115	CTI	614	68
FR	Auto Train	1078	2863	CTI	344	DCS	244	16
	Silver Meteor	1918	1905	CTI	769	DCS	435	61
	Silver Star	1004	1284	DSR	318	DCS	254	61
MADOT	Vermonteer	1984	2277	DSR	1877	DCS	108	50
MBTA	Downeaster	922	1228	CTI	543	DCS	114	38
Metra	Empire Builder	1047	1539	CTI	878	DCS	58	29
	Hiawatha	1319	1374	CTI	738	DSR	339	29
MIDOT	Blue Water	139	468	DCS	117	RTE	22	22
	Wolverine	533	565	PTI	313	DSR	86	134
MNRR	Acela Express	1539	1952	DSR	836	CTI	612	56
	Adirondack	912	1402	CTI	410	RTE	177	64
	All Other Northeast Regional	1727	2090	DSR	918	CTI	735	56
	Ethan Allen Express	1005	1521	CTI	403	DMW	241	64
	Lake Shore Ltd	1195	1492	CTI	909	RTE	154	64
	Maple Leaf	755	1309	CTI	418	DSR	154	64
	New York - Albany	858	1402	CTI	423	DSR	132	64
	New York - Niagara Falls	1150	1808	CTI	457	DMW	298	64
	Richmond / Newport News / Norfolk	2037	2472	CTI	915	DSR	809	56
	Vermonteer	1688	2692	DSR	795	CTI	789	56
NECR	Vermonteer	998	1332	DSR	957	DMW	26	238
NMDOT	Southwest Chief	1684	1838	DCS	382	CTI	352	80
PanAm	Downeaster	781	1134	PTI	310	FTI	178	77
SCRRRA	Coast Starlight	1722	2327	CTI	710	PTI	689	48
	Pacific Surfliner	989	1022	PTI	439	CTI	334	95
SDNRR	Pacific Surfliner	1685	1578	CTI	735	PTI	624	60
TRE	Texas Eagle	2814	2471	DTR	1167	CTI	1020	33
VTR	Ethan Allen Express	466	176	DMW	418	DCS	27	24

The numbers included in this document are preliminary and are for informational purposes only.

Excludes hosts with fewer than 15 route miles.

Delays on the Amtrak-owned portion of the Northeast Corridor are shown in a separate report, with tighter delay standards.

Northeast Regional: Roanoke includes all trains between Roanoke and points on the NEC; Richmond / Newport News / Norfolk includes all trains between these locations and points on the NEC.

Minutes of Delay per 10K Train Miles by Service for December 2018

Service	Host	Total Host Responsible Delays		Largest Two Delay Categories - Current Month				Route Miles	
		Current Month	Most Recent 12 Months	#1		#2			
Target		900	900						
Acela Express									
Acela Express	MNRR	1539	1952	DSR	836	CTI	612	56	
All Other NEC Corridor Routes									
Northeast Regional	Richmond / Newport News / Norfolk	CSX	1180	1781	DCS	255	DSR	244	189
		NS	552	453	DSR	205	DCS	145	81
		MNRR	2037	2472	CTI	915	DSR	809	56
	All Other Northeast Regional	MNRR	1727	2090	DSR	918	CTI	735	56
	Roanoke	NS	801	758	FTI	545	DCS	134	216
Non-NEC Corridor Routes									
Capitol Corridor	UP	644	574	PTI	247	DSR	164	171	
Carolinian	CSX	1352	1726	FTI	429	PTI	356	295	
	NS	911	1028	PTI	387	FTI	198	202	
Cascades	BNSF	1369	1354	DSR	393	FTI	375	343	
	UP	1133	1209	FTI	488	PTI	465	125	
Downeaster	MBTA	922	1228	CTI	543	DCS	114	38	
	PanAm	781	1134	PTI	310	FTI	178	77	
Empire	Adirondack	CN	2803	3216	DSR	1107	RTE	803	49
		CP	513	752	PTI	426	DCS	54	178
		Amtrak	313	533	PTI	159	RTE	84	100
		MNRR	912	1402	CTI	410	RTE	177	64
Ethan Allen Express	CP	287	667	PTI	222	RTE	24	60	
	Amtrak	373	678	PTI	175	RTE	104	100	
	MNRR	1005	1521	CTI	403	DMW	241	64	
	VTR	466	176	DMW	418	DCS	27	24	
Maple Leaf	CSX	813	1357	RTE	305	FTI	238	298	
	Amtrak	328	469	DCS	117	PTI	114	109	
	MNRR	755	1309	CTI	418	DSR	154	64	
New York - Albany	Amtrak	199	382	DCS	64	PTI	54	81	
	MNRR	858	1402	CTI	423	DSR	132	64	
New York - Niagara Falls	CSX	686	1119	RTE	253	FTI	241	296	
	Amtrak	284	484	PTI	114	DCS	92	109	
	MNRR	1150	1808	CTI	457	DMW	298	64	
Heartland Flyer	BNSF	1595	2133	DSR	857	FTI	611	236	
Hiawatha	CP	249	273	FTI	77	CTI	38	53	
	Metra	1319	1374	CTI	738	DSR	339	29	
Hoosier	CSX	776	902	FTI	247	DCS	237	175	
Illinois	Carl Sandburg / Illinois Zephyr	BNSF	464	613	FTI	219	RTE	88	257
	Illini / Saluki	CN	1460	1796	DCS	785	FTI	301	304
	Lincoln Service	CN	1739	1693	FTI	1240	DCS	195	35
		UP	848	1009	FTI	321	PTI	302	231
Michigan	Blue Water	CN	876	851	FTI	743	DCS	53	159
		NS	3168	3188	FTI	2235	DCS	431	39
		Amtrak	249	777	PTI	132	DCS	81	99
		MIDOT	139	468	DCS	117	RTE	22	22
	Pere Marquette	CSX	392	465	FTI	219	DCS	126	135
		NS	2790	2503	FTI	1887	PTI	315	39
	Wolverine	CN	2499	1850	FTI	882	DSR	739	27
	NS	4048	3215	FTI	2495	DCS	858	39	
	Amtrak	477	1059	PTI	285	DCS	158	99	
	MIDOT	533	565	PTI	313	DSR	86	134	
Missouri	UP	644	753	FTI	386	PTI	85	271	
Pacific Surfliner	BNSF	960	1232	DCS	263	CTI	199	22	
	UP	1564	1366	PTI	826	DCS	273	174	
	SCRRA	989	1022	PTI	439	CTI	334	95	
	SDNRR	1685	1578	CTI	735	PTI	624	60	
Pennsylvanian	NS	1036	1374	FTI	758	RTE	165	249	
Piedmont	NS	978	1229	FTI	412	PTI	225	173	
San Joaquins	BNSF	902	1022	PTI	402	FTI	295	284	
	UP	1018	1181	PTI	500	DCS	228	88	
Vermont	MADOT	1984	2277	DSR	1877	DCS	108	50	
	MNRR	1688	2692	DSR	795	CTI	789	56	
	NECR	998	1332	DSR	957	DMW	26	238	

Minutes of Delay per 10K Train Miles by Service for December 2018

Service	Host	Total Host Responsible Delays		Largest Two Delay Categories - Current Month				Route Miles
		Current Month	Most Recent 12 Months	#1		#2		
Target		900	900					
Long-Distance Routes								
Auto Train	CSX	1212	1276	FTI	480	PTI	387	898
	FR	1078	2863	CTI	344	DCS	244	16
California Zephyr	BNSF	785	1111	FTI	292	DSR	215	1027
	UP	525	718	FTI	207	PTI	143	1381
Capitol Ltd	CSX	725	1202	FTI	242	RTE	187	307
	NS	2821	2686	FTI	2268	RTE	197	481
Cardinal	CSX	694	1014	FTI	315	DCS	149	703
	NS	1977	1527	FTI	972	PTI	542	79
	BBrRR	1299	1290	PTI	536	FTI	520	132
City Of New Orleans	CN	1118	1274	FTI	582	RTE	172	930
Coast Starlight	BNSF	687	767	FTI	219	DSR	171	186
	UP	1091	1238	PTI	386	FTI	307	1162
	SCRRA	1722	2327	CTI	710	PTI	689	48
Crescent	NS	1780	1973	FTI	1081	DSR	245	1141
Empire Builder	BNSF	668	1035	FTI	383	DSR	139	2147
	CP	362	675	FTI	196	DCS	48	384
	Metra	1047	1539	CTI	878	DCS	58	29
Lake Shore Ltd	CSX	725	1039	FTI	244	RTE	173	741
	NS	3208	3035	FTI	2182	PTI	678	339
	MNRR	1195	1492	CTI	909	RTE	154	64
Palmetto	CSX	857	1120	PTI	307	FTI	242	659
Silver Meteor	CSX	719	890	FTI	272	PTI	176	1152
	Fla DOT	2325	1317	DSR	1552	CTI	498	68
	FR	1918	1905	CTI	769	DCS	435	61
Silver Star	CSX	1003	1193	PTI	289	FTI	210	1209
	NS	1505	996	FTI	628	DCS	402	28
	Fla DOT	1991	1430	DSR	1115	CTI	614	68
	FR	1004	1284	DSR	318	DCS	254	61
Southwest Chief	BNSF	654	716	FTI	251	DCS	124	2206
	NMDOT	1684	1838	DCS	382	CTI	352	80
Sunset Ltd	BNSF	1894	1600	FTI	865	DSR	695	190
	UP	1722	1750	FTI	1124	DSR	180	1784
Texas Eagle	BNSF	1904	1872	DSR	1111	FTI	553	116
	CN	2674	2670	FTI	1789	RTE	311	35
	UP	1526	1838	FTI	776	DSR	247	1073
	TRE	2814	2471	DTR	1167	CTI	1020	33

The numbers included in this document are preliminary and are for informational purposes only.
 Excludes hosts with fewer than 15 route miles.
 Delays on the Amtrak-owned portion of the Northeast Corridor are shown in a separate report, with tighter delay standards.
 Northeast Regional: Roanoke includes all trains between Roanoke and points on the NEC; Richmond / Newport News / Norfolk includes all trains between these locations and points on the NEC.

All Stations and Customer OTP for December 2018

Service	All Stations OTP		Customer OTP		Avg Mins Late per Late Rider**	
	Current Month	Most Recent 12 Months	Current Month	Most Recent 12 Months	Current Month	Most Recent 12 Months
Amtrak System	74.7%	72.4%	74.9%	72.6%	55	58
NEC Corridor Routes	90.3%	82.8%	88.0%	81.9%	34	39
Target*	80.0%	80.0%				
Acela Express*	91.4%	78.7%	89.1%	80.6%	23	29
Keystone	95.2%	91.1%	94.9%	90.2%	33	37
Northeast Regional	88.2%	81.1%	85.7%	80.1%	37	43
All Other Northeast Regional	91.5%	86.0%	89.9%	85.7%	35	41
Richmond / Newport News / Norfolk	81.6%	74.3%	79.0%	71.7%	39	45
Roanoke	84.4%	75.3%	81.3%	72.3%	34	44
Springfield Shuttles	94.0%	82.3%	92.7%	84.7%	35	35
Non-NEC Corridor Routes	75.7%	76.6%	71.7%	72.2%	40	43
Target	80.0%	80.0%				
Capitol Corridor	85.6%	89.4%	82.5%	87.9%	29	32
Carolinian	43.9%	50.6%	40.8%	48.4%	59	63
Cascades	54.4%	63.7%	48.2%	56.4%	37	40
Downeaster	92.4%	81.4%	87.4%	75.5%	32	35
Empire	84.8%	77.1%	84.8%	74.0%	35	42
Adirondack	74.0%	69.8%	71.1%	66.7%	47	48
Ethan Allen Express	93.8%	86.9%	92.4%	78.9%	27	33
Maple Leaf	80.2%	64.0%	77.9%	62.6%	34	50
New York - Albany	95.2%	89.0%	93.7%	84.4%	28	37
New York - Niagara Falls	76.8%	70.1%	72.7%	60.4%	33	42
Heartland Flyer	68.1%	58.4%	65.0%	41.0%	36	46
Hiawatha	97.8%	96.4%	98.0%	95.4%	28	39
Hoosier	79.5%	79.6%	87.6%	80.1%	32	55
Illinois	71.8%	68.5%	68.8%	64.0%	37	46
Carl Sandburg / Illinois Zephyr	87.3%	87.8%	87.7%	84.3%	37	48
Illini / Saluki	38.3%	36.6%	27.7%	24.6%	40	47
Lincoln Service	82.1%	76.1%	80.9%	74.0%	30	44
Michigan	67.4%	65.1%	57.8%	52.4%	37	41
Blue Water	81.5%	75.3%	71.7%	59.5%	39	41
Pere Marquette	81.9%	83.8%	73.8%	75.4%	30	39
Wolverine	61.7%	59.9%	49.3%	45.2%	37	41
Missouri	84.0%	82.9%	85.4%	80.3%	42	45
Pacific Surfliner	67.5%	78.0%	61.7%	72.7%	44	46
Pennsylvanian	80.3%	71.1%	78.7%	69.5%	40	46
Piedmont	73.3%	73.5%	67.3%	64.2%	34	40
San Joaquins	67.5%	73.1%	57.1%	66.1%	42	41
Vermont	93.1%	66.8%	93.8%	71.0%	33	49
Long-Distance Routes	45.4%	43.4%	45.6%	42.7%	90	101
Target	80.0%	80.0%				
Auto Train	79.8%	71.5%	65.7%	59.7%	72	118
California Zephyr	64.0%	48.4%	70.2%	45.9%	61	108
Capitol Ltd	39.5%	35.6%	32.0%	22.7%	98	105
Cardinal	52.0%	52.5%	55.1%	53.3%	62	83
City Of New Orleans	54.8%	50.8%	64.4%	64.2%	64	67
Coast Starlight	50.7%	54.6%	48.0%	55.5%	89	87
Crescent	19.6%	29.4%	21.4%	24.8%	179	136
Empire Builder	63.1%	44.1%	61.9%	42.1%	69	125
Lake Shore Ltd	39.8%	40.5%	30.6%	30.9%	82	92
Palmetto	65.1%	58.8%	62.9%	57.0%	53	59
Silver Meteor	36.6%	46.9%	29.9%	40.9%	71	90
Silver Star	26.8%	36.3%	19.4%	29.2%	96	92
Southwest Chief	48.1%	43.2%	49.9%	38.7%	96	100
Sunset Ltd	16.3%	25.9%	19.2%	38.4%	99	130
Texas Eagle	40.8%	37.0%	40.9%	35.2%	80	107

The numbers included in this document are preliminary and are for informational purposes only.

Northeast Regional: Roanoke includes all trains between Roanoke and points on the NEC; Richmond/Newport News/Norfolk includes all trains between these locations and points on the NEC.

* Acela Express on time performance target is 90.0%

** Excludes on time Customers

Host Railroad Responsible Delays

Code	Code Description	Explanation
CTI	Commuter Train Interference	Delays for meeting or following commuter trains
DCS	Signal Delays	Signal failure or All Other signal delays, wayside defect-detector false-alarms, defective road crossing protection, efficiency tests, drawbridge stuck open
DMW	Maintenance of Way	Maintenance of Way delays including holds for track repairs or MW foreman to clear
DSR	Slow Order Delays	Temporary slow orders, except heat or cold orders
DTR	Detour	Delays from detours
FTI	Freight Train Interference	Delays from freight trains
PTI	Passenger Train Interference	Delays for meeting or following All Other passenger trains
RTE	Routing	Routing-dispatching delays including diversions, late track bulletins, etc.

Amtrak Responsible Delays

Code	Code Description	Explanation
ADA	Passenger Related	All delays related to disabled passengers, wheel chair lifts, guide dogs, etc.
CAR	Car Failure	Mechanical failure on all types of cars
CCR	Cab Car Failure	Mechanical failure on Cab Cars
CON	Hold for Connection	Holding for connections from All Other trains or buses.
ENG	Locomotive Failure	Mechanical failure on engines.
HLD	Passenger Related	All delays related to passengers, checked-baggage, large groups, etc.
INJ	Injury Delay	Delay due to injured passengers or employees.
ITI	Initial Terminal Delay	Delay at initial terminal due to late arriving inbound trains causing late release of equipment.
OTH	Miscellaneous Delays	Lost-on-run, heavy trains, unable to make normal speed, etc.
SVS	Servicing	All switching and servicing delays
SYS	Crew & System	Delays related to crews including lateness, lone-engineer delays

Third-Party Delays

Code	Code Description	Explanation
CUI	Customs	U.S. and Canadian customs delays; Immigration-related delays
DBS	Debris	Debris strikes
MBO	Drawbridge Openings	Movable bridge openings for marine traffic where no bridge failure is involved
NOD	Unused Recovery Time	Wait for departure time
POL	Police-Related	Police/fire department holds on right-of-way or on-board trains
TRS	Trespassers	Trespasser incidents including road crossing accidents, trespasser / animal strikes, vehicle stuck on track ahead, bridge strikes
WTR	Weather-Related	All severe-weather delays, landslides or washouts, earthquake-related delays, heat or cold orders

*These delay codes are applicable to Off-NEC routes only.