

HISTORIC AMERICAN BUILDINGS SURVEY

INDEX TO PHOTOGRAPHS

1000-1030 NORTH PAYSON STREET (ROWHOUSES)

HABS MD-1441

(Midtown Edmondson Historic District)

Baltimore

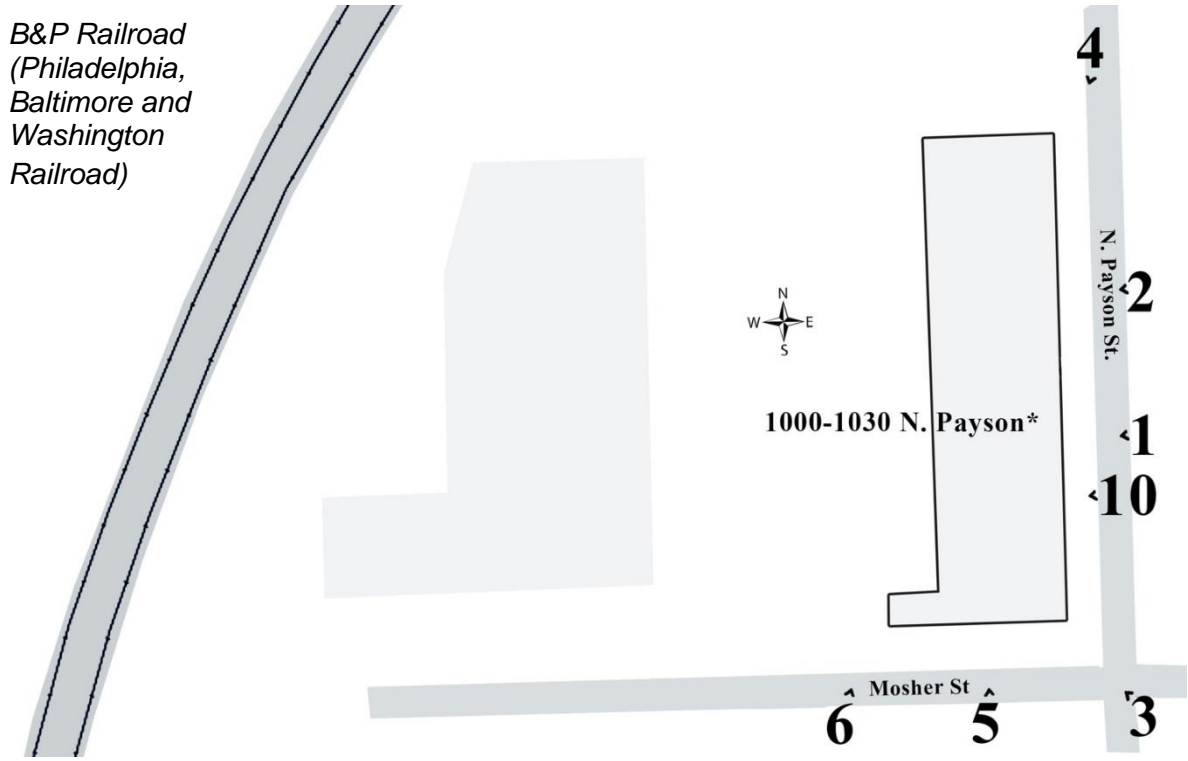
Maryland

INDEX TO BLACK AND WHITE PHOTOGRAPHS

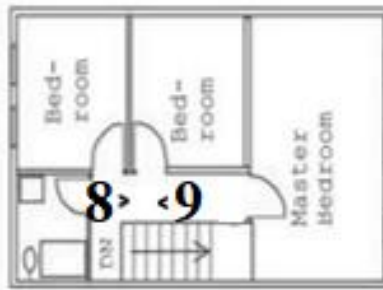
Renee Bieretz, photographer, September 2021 (views 1-6); February 2023 (views 7-10)

- | | |
|------------|---|
| MD-1441-1 | Elevation view of 1000-1016 N. Payson Street, looking west. |
| MD-1441-2 | Elevation view of 1014-1030 N. Payson Street, looking west. |
| MD-1441-3 | Perspective view from the intersection of N. Payson Street and Mosher Street, looking northwest. |
| MD-1441-4 | Perspective view, looking southwest. |
| MD-1441-5 | Side elevation view of 1000 N. Payson Street, looking north. |
| MD-1441-6 | Perspective view of 1000 N. Payson Street, looking northeast. |
| MD-1441-7 | Interior view of first floor of 1024 N. Payson Street, looking east. |
| MD-1441-8 | Interior view of second floor of 1024 N. Payson Street, looking east. |
| MD-1441-9 | Detail view of railing on second floor of 1024 N. Payson Street, looking west. |
| MD-1441-10 | Detail view of “The Original Hand-Sculptured Form Stone” plaque at 1008 N. Payson Street, looking west. |

1000-1030 NORTH PAYSON STREET (ROWHOUSES)
 HABS MD-1441
 INDEX TO PHOTOGRAPHS
 (Page 2)



SECOND FLOOR



FIRST FLOOR

