

ISSUE #8 WINTER 2025

Welcome to our newsletter which will provide updates and important news during construction.

ON TRACK

B&P Tunnel Replacement Program



Letter from Program Leadership

Greetings to our communities, partners, and colleagues. As we approach the close of 2025, it is important to pause and reflect on the progress we have made together. This year has been marked by significant milestones that bring us closer to delivering the

B&P Tunnel Replacement Program:

- Completed demolition activities successfully
- Kicked off major utility relocation work at both the south and north approaches
- Launched our Historic Salvage Program, with about 50% of available salvaged materials claimed by community members thus far
- Began work for the new Mulberry Street railroad bridge

- Started manufacturing tunnel boring machines (TBMs) that will build the two new tunnel tubes
- Positively impacted Maryland businesses through local engagement and contracting opportunities

Looking ahead to 2026, our focus remains clear:

- Maintain focus on safety daily, guiding every decision and action
- Continue our extensive community engagement efforts
- Advance major construction with steady progress

Together, we are building not only a modern rail system but also a stronger, more connected region.

On behalf of the entire team, I wish you and your families a joyful holiday season. Sincere appreciation to our communities for your trust, patience, and partnership. We look forward to continuing this journey with you in the year ahead.

Warm regards,

Luigi Rosa, Amtrak Assistant Vice President



BPTUNNEL.COM

IN THE NEWS

PAGE

2

Progress on the Ground: Construction Underway
Utility Siphon Tunnel
Parallel Tracks – Advancing Rail
Infrastructure with Our Partners

3

Construction Pictures

5

Your Vision, Our Support: Preparing to Launch the
Community Investment Program (CIP)
Historic Salvage Program Success and Continued
Availability

6

Kids' Corner
Stay Connected

Progress on the Ground: Construction Underway

Our crews continue to make steady progress on essential construction activities for the Program. Traffic modifications remain in effect across several roadways in West Baltimore, along with ongoing major utility relocations, construction of the utility siphon tunnel, and other critical activities that may not be immediately visible to the community.

Traffic Modifications and Utility Upgrades

- **W Mulberry Street** remains closed between N Warwick Avenue and N Smallwood Street as crews rebuild the rail bridge over W Mulberry Street and realign infrastructure in preparation for construction of the new, relocated West Baltimore MARC station. The station — including underground utilities, and the structures that will support the new bridge — will be shifted approximately 100 feet west of its current location. We're working closely with the Maryland Transit Administration (MTA) and City of Baltimore to minimize disruptions and keep traffic moving as safely as possible during this closure.
- **N Pulaski Street** remains closed between W Lafayette Avenue and Harlem Avenue while crews complete utility relocations, including preparing for a new 126-inch-diameter stormwater main pipe slated for installation in early 2026.

- **Rayner Avenue** remains closed between N Pulaski Street and N Payson Street as crews prepare to install a 30-inch water line in the roadway. On-street parking will be restricted when installation begins, but we will maintain pedestrian access to homes. There may be periods when the sidewalk may be closed. Our outreach team will continue providing updates to residents in advance of new activities.
- **McMechen Street Driveway** lane closures and traffic pattern shifts near the I-83 (JFX) off-ramp at exit 6, adjacent to the MTA Light Rail Maintenance Facility. Crews are preparing for the tunnel's future north portal and ventilation facility by installing necessary utilities and removing the median between the MTA Light Rail Facility and W North Avenue to accommodate future lane shifts.

Utility Siphon Tunnel

Crews continue to make significant progress on the utility siphon tunnel that will safely relocate essential water, sewer, communication, and electrical utilities beneath the existing Northeastern Corridor railroad tracks and future southern approach. Crews have been working diligently on the shafts at both ends of the tunnel, with the east shaft reaching its final depth of 65 feet in August and the west shaft reaching 46 feet in late November. Additionally, the team has excavated approximately 250 linear feet of the 350-foot-long tunnel.

Parallel Tracks – Advancing Rail Infrastructure with Our Partners

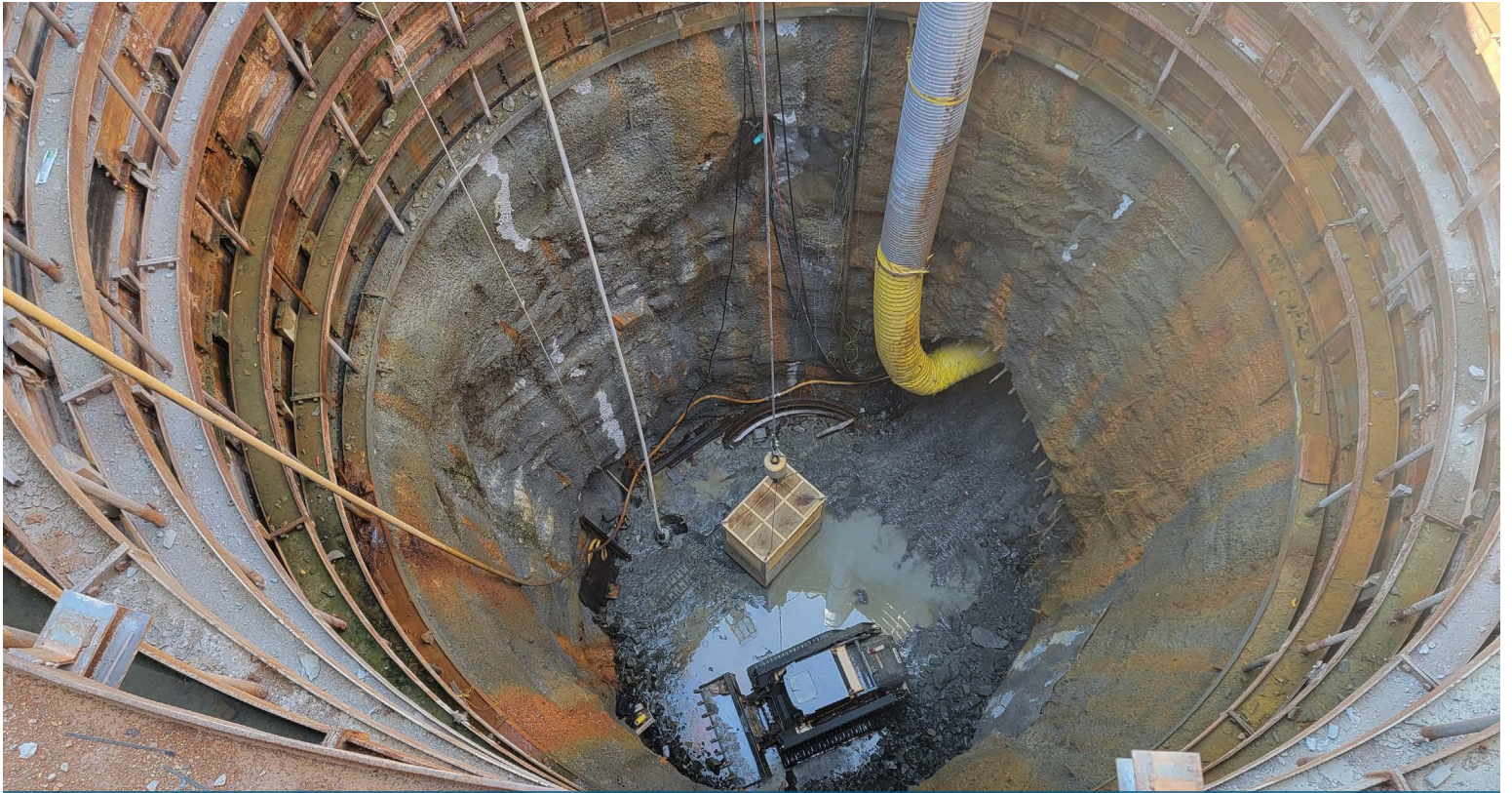
As a key partner on this Program, MTA is also investing in rail infrastructure that will help support Amtrak's commitment to running electrified passenger trains in the new tunnel and strengthen MARC train service.

As part of this effort, the MTA will expand and modernize MARC train storage facilities at the Martin Maintenance Yard in Baltimore County. This project will include new tracks with catenary electrification (overhead electrical wires), crossover tracks that allow trains to switch between tracks, and upgraded maintenance equipment. This expansion represents

a key step in preparing MARC's Penn Line for future fully electrified train service aligned with completion of the new Frederick Douglass Tunnel. It also supports expanded service through Amtrak's Baltimore Penn Station by providing an alternate storage location for MARC trains that currently park at the station.

Construction is scheduled to begin in the coming months and is expected to be completed by summer 2027. We look forward to continuing our partnership with MTA to modernize rail travel in Maryland and beyond.

Construction Photos



Utility Siphon Tunnel East Shaft



Inside the Utility Siphon Tunnel



Utility Installations and Median Shifts on McMechen Street Driveway



W Mulberry Street Bridge Construction Site

Your Vision, Our Support: Preparing to Launch the Community Investment Program (CIP)

Amtrak has committed \$50 million toward community investments across six major project categories, including community grants for eligible organizations. Our goal is to support projects that deliver meaningful, positive benefits to the neighborhoods closest to the new tunnel alignment.

We want eligible organizations to be ready for the launch! Sign up to be notified when the Notice of Funding Opportunity (NOFO) is published in the coming months. The NOFO is a formal public announcement which will signify Amtrak's intent to award grants to eligible organizations. It will contain all the information needed to understand the funding, including a description of the CIP, eligibility requirements and application procedures, and deadlines. We will email updates to all who have signed up for our email list when the application window opens. Subscribers will also receive details about technical assistance training sessions which are designed to support potential applicants.

Interested individuals and organizations are encouraged to read the CIP Guide on our website: bit.ly/AMTRAKCIPGUIDE



Historic Salvage Program Success and Continued Availability



Earlier this year, we began releasing materials salvaged from Amtrak-acquired historic properties to residents who live in or are actively working on a renovation project in the Midtown Edmondson or Greater Rosemont Historic Districts.

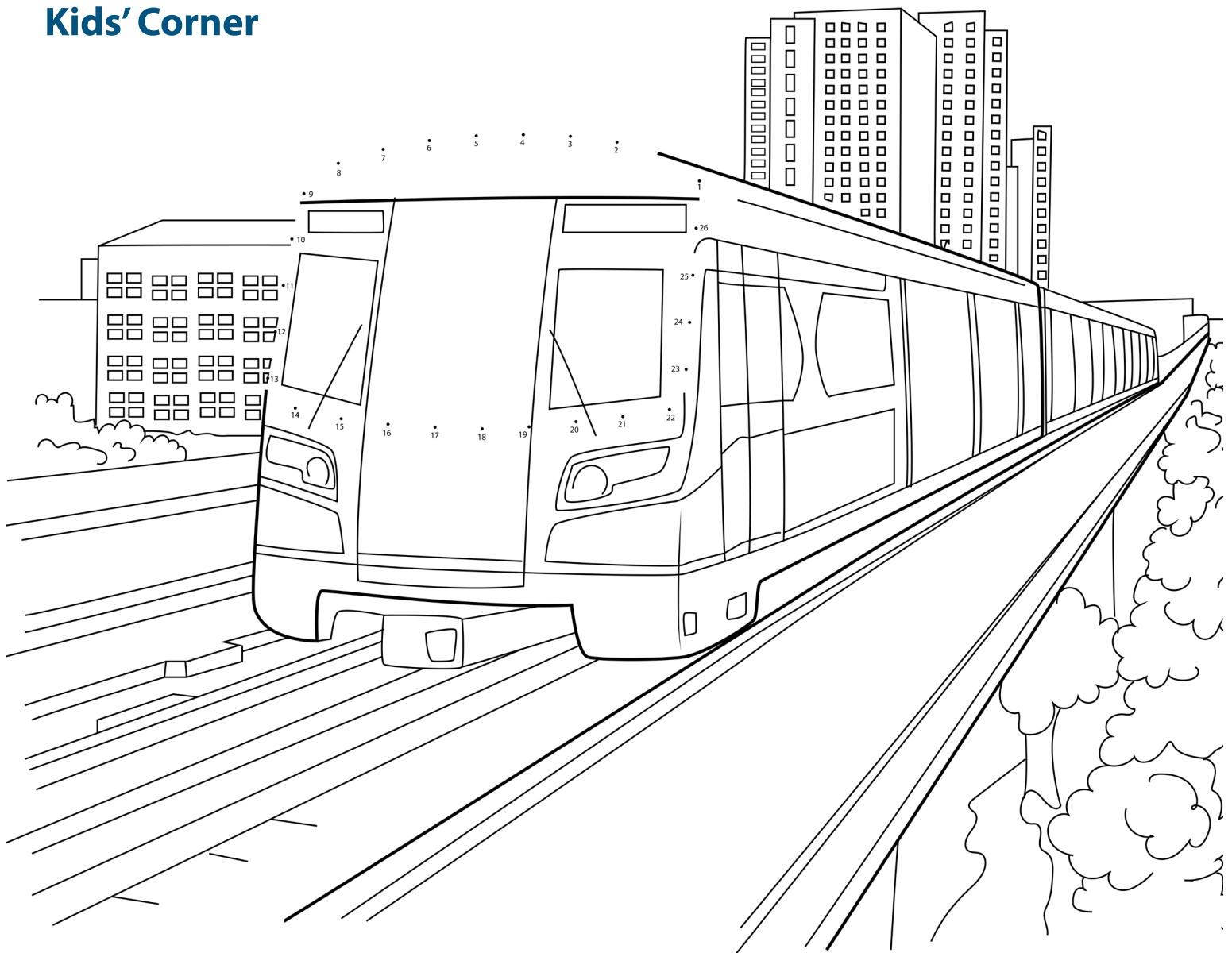
We are happy to share that nearly half of the salvaged materials have already found new homes! Additional materials are still available, including kitchen cabinets, doors, cornices, and skylights. Thank you to everyone who has stopped by, claimed materials, and helped us keep these valuable items out of landfills.

If you live in or are working in one of these eligible districts and could use historic elements to enhance your project, please visit us at the re-purposed Atlas Building at 2126 Edmondson Avenue (use the rear entrance at 2150 Harlem Avenue). Before your visit, please check the current operating hours on the [Historic Salvage Program webpage](#) or call 443-423-1115.



Eligibility: These materials are available to residents who live in or are actively working on a renovation project in the Midtown Edmondson or Greater Rosemont Historic Districts.

Kids' Corner



Stay Connected

We want it to be easy for you to stay aware of Program activities and events. Scan the QR code below to see a list of ways to stay connected. Each of the included links will connect you directly to useful Program resources.



Opt-in for Text Messages

Opt-in for construction and/or traffic notifications by texting one of the following keywords to (833) 917-3749.

- Text **BPTNorth** – for updates about work occurring north of North Avenue

- Text **BPTSouth** – for updates about work occurring south of North Avenue
- Text **BPTConstruct** – for all construction updates on the Program
- Text **BPTTraffic** – for all traffic updates on the Program

Add **BPTunnel@amtrak.com** to your list of trusted senders to ensure you receive important updates.