

Welcome

PLEASE NOTE:
This meeting is
being recorded.

B&P Tunnel Replacement Program

Featuring the Frederick Douglass Tunnel, West Baltimore MARC Station, and additional infrastructure upgrades

Quarterly Program Outreach Meeting

Monday, December 8, 2025

Virtual Meeting

B&P Tunnel Replacement

FREDERICK DOUGLASS TUNNEL
WEST BALTIMORE MARC STATION



AMTRAK



Audience Q&A

① The Slido app must be installed on every computer you're presenting from

slido

Virtual Meeting Safety Reminder

- Be aware of your surroundings
- Push your chair in if you get up
- Use covered containers for beverages



- **Monitor distance** – Should be 18” to 24” from your eyes
- **Monitor height** – Top of the monitor should be eye-level and slightly tilted
- **Arms** – Relax shoulders; forearms parallel to the floor; minimal bend at the wrist
- **Chair** – Should have a backrest and armrests; adjust height
- **Legs** – Thighs parallel to the floor
- **Feet** – Parallel to the floor; use a footrest if necessary

Virtual Meeting Guidelines

- **Please note:** This presentation is being **recorded** and will be available on the Program website after the meeting
- Please submit questions during the presentation using the Q&A chat function
- We will respond to questions during a facilitated discussion at the end of the presentation
- If you are joining via phone call, please press *5 to raise your hand and we will unmute you (*6) to allow you to ask your question

Using Slido / Submitting Questions

- We are using Slido to solicit feedback during the presentation. To participate in this session:
 - Go to Slido.com or scan the QR code shown
 - Enter code #BPT-Dec2025
- You may have noticed that we have turned cameras off and disabled microphones to preserve bandwidth and limit interruptions during the presentation
- To ask questions, please:
 1. Use the Q&A function within Slido to submit a question
 2. Raise your hand to speak (press *6) during the Q&A portion of the meeting (callers only)



**Join at slido.com
#BPT-Dec2025**



What neighborhood are you joining us from?

Program Background and Overview

B&P Tunnel Replacement

FREDERICK DOUGLASS TUNNEL
WEST BALTIMORE MARC STATION



 **AMTRAK®**

About Amtrak: America's Railroad



- 500+ destinations across 46 states and 3 Canadian provinces
- 22,000+ employees
- 34.5 million passengers per year

B&P Tunnel Background

- The existing B&P tunnel connects West Baltimore MARC Station to Baltimore Penn Station and is over 150 years old
- The B&P tunnel supports 15 million passengers per year (Amtrak + MARC Penn Line)

Top Issues:

- Aging structure
- Frequent train delays through the tunnel
- High maintenance (frequent outages)
- No redundancy & resiliency



Program Area Map



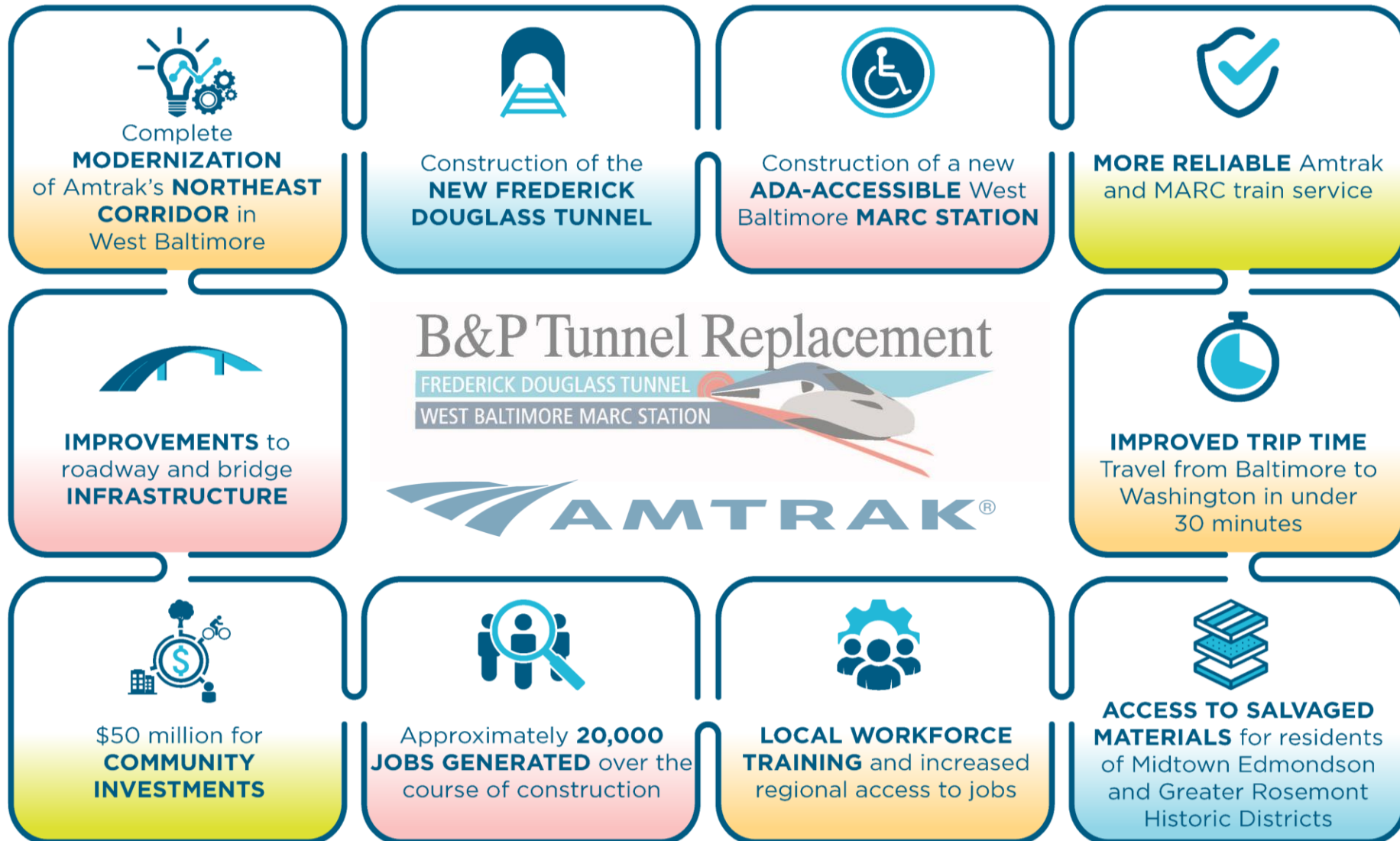
B&P Tunnel Replacement

FREDERICK DOUGLASS TUNNEL
WEST BALTIMORE MARC STATION



AMTRAK®

Program Benefits



2025 B&P Tunnel Program Year in Review

B&P Tunnel Replacement

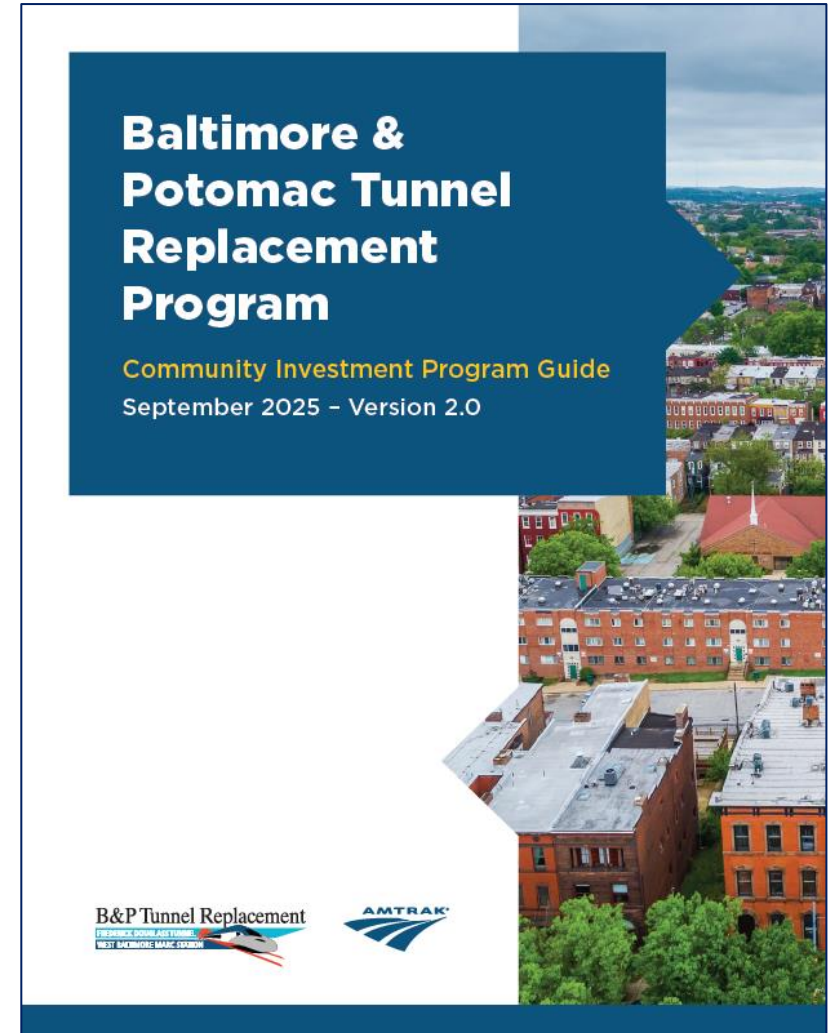
FREDERICK DOUGLASS TUNNEL
WEST BALTIMORE MARC STATION



AMTRAK®

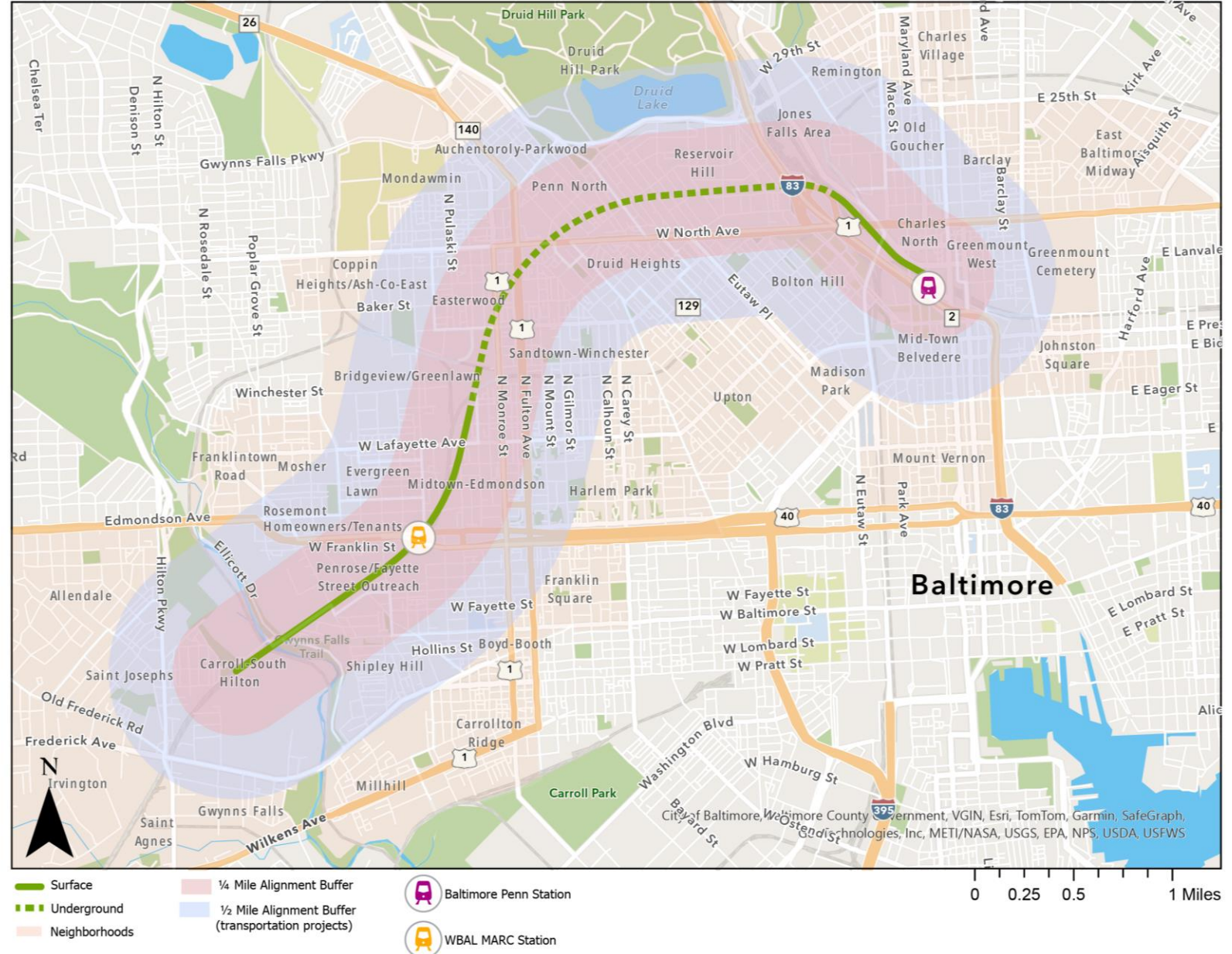
Community Investment Program

- Updated CIP Guide on website
- Hired *new* CIP Program Manager, Lydia Weiss
- Preparing for upcoming launch, date TBD



CIP Project Eligibility Criteria: Geography

- All projects must be located within ¼ mile of the new alignment (pink)
- Transportation projects may extend to ½ mile (blue)



Historic Salvage Program

- Launched Historic Salvage Program
 - Opened June 2, 2025
 - Free access to salvaged materials for residents of Midtown Edmondson and Greater Rosemont historic districts



Ribbon cutting of the Atlas Building

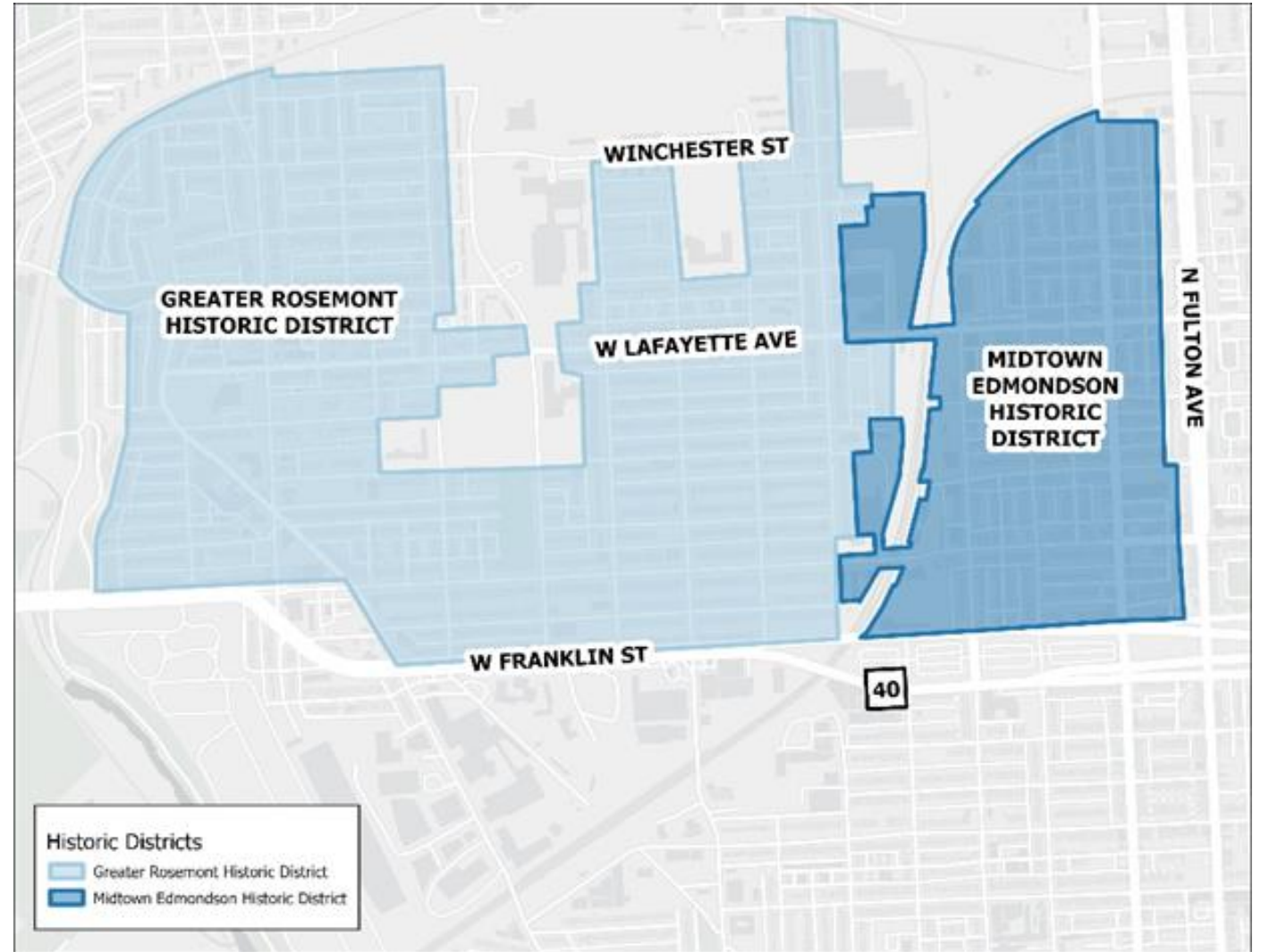


Historic salvage materials at Atlas Building



Salvage Eligibility Areas

- Hours of operation
 - Monday – Wednesday, 9AM – 3PM
 - Saturdays by appointment only



Program Stewardship Activities



**Requity Community Cleanup
April 2025**



Druid Heights Community Cleanup – May 2025



**Mary Ann Winterling
Art in The Park – May 2025**



Program Stewardship Continued



Charles St Promenade – June 2025



Rock the Block Sandtown – July 2025



Reservoir Hill Resource Fair – August 2025



Back to School Night – September 2025



Back to School Night – September 2025



**Join at slido.com
#BPT-Dec2025**

2025 Year End Construction in Review

B&P Tunnel Replacement

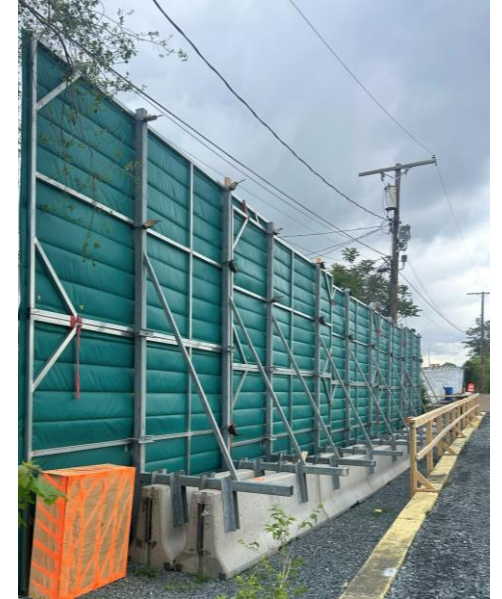
FREDERICK DOUGLASS TUNNEL
WEST BALTIMORE MARC STATION



 **AMTRAK®**

How We Prepared for Construction

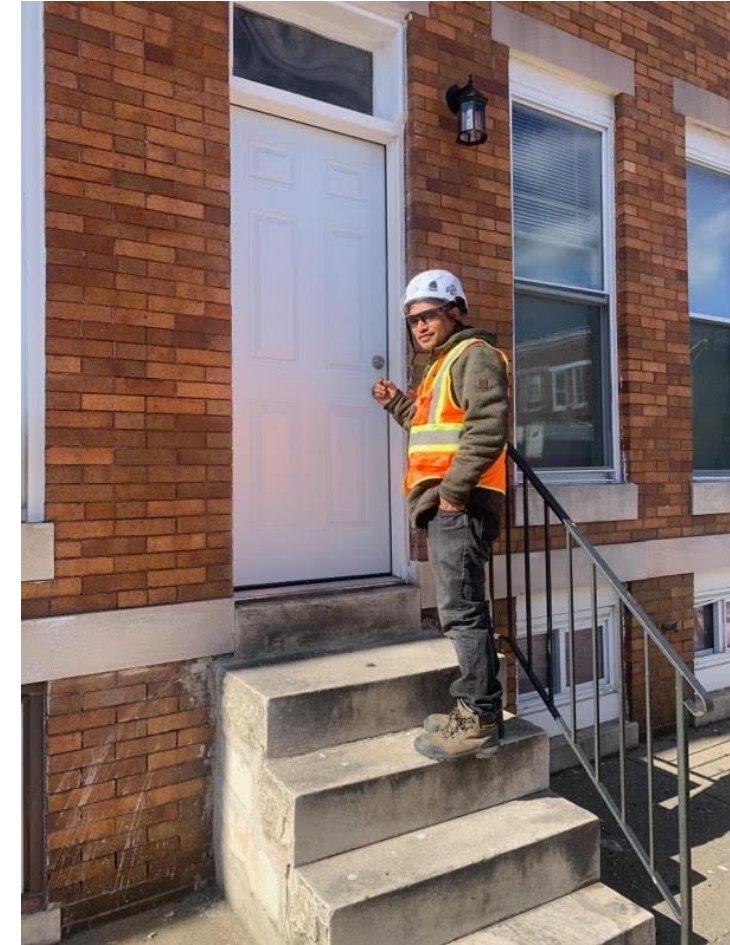
- Installed monitoring equipment
- Completed preconstruction inspections on eligible properties
- Placed additional monitoring equipment in public spaces
- Installed site fencing and temporary construction noise walls around the job site



Preconstruction Inspection

- Documents the existing interior and exterior conditions of homes/buildings adjacent to the Program alignment
- Property owners benefit from this inspection before construction to document their property's condition in case of damage
- Inspections take approximately 1 hour and include photos that document existing physical conditions and written report of inspector's findings
- Eligible property owners received a letter via UPS or FedEx with appointment scheduling instructions

Interested in getting an inspection now? Eligible property owners can still alert our team to get one scheduled! Check with us to confirm eligibility.



Construction Monitoring (Movement)



- Once eligibility for a preconstruction inspection has been determined and permission is granted by the property owner, the contractor installs instruments to monitor for movement
- This work is coordinated and permitted with Baltimore City agencies
- The contractor provides security for monitoring devices
- The instruments may be placed:
 - In ground to measure potential movement and groundwater levels
 - On adjacent structures (with owner permission)
 - On ground (sidewalk) surface
 - On utilities

Construction Monitoring (Noise & Vibration)



Noise monitor



Vibration monitor

- The contractor installed instruments to monitor for noise and vibration in public right-of-way (not on homes)
- This work has been coordinated and permitted by Baltimore City agencies
- The contractor measured current background noise and vibration prior to the start of construction to establish baseline readings
- Contractors receive alerts from the monitoring systems and work with the Amtrak Program team to determine if any adjustments or mitigations are needed in the field

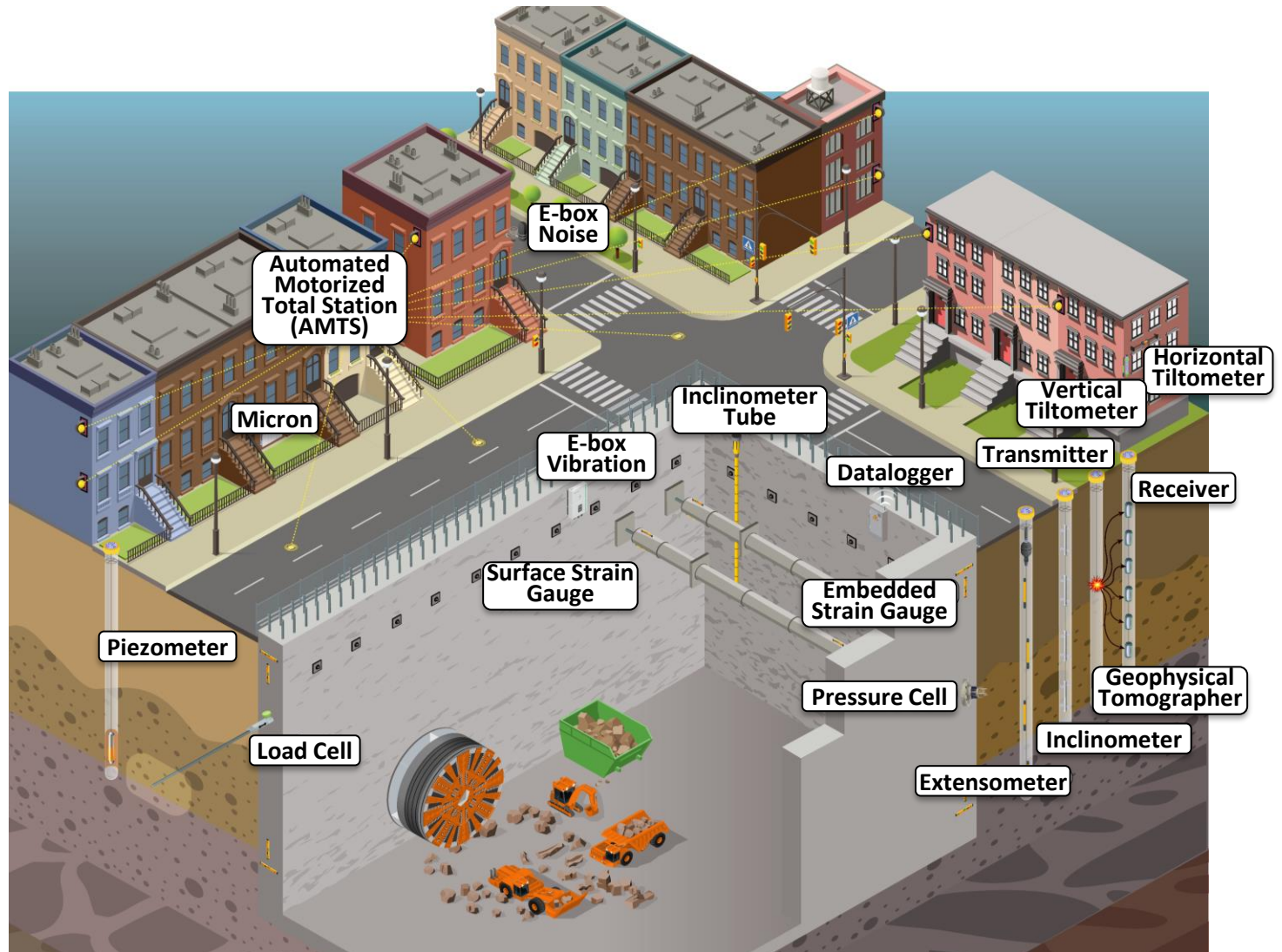
Geotechnical Instrumentation and Monitoring

■ Objectives

- Monitor Rail and Catenary lines
- Monitor Utilities
- Monitor Tunnel Deformation
- Monitor Private Properties

■ Instruments

- Piezometers
- Inclinerometers
- Extensometers
- Tiltmeters
- Surface Monitoring Points
- Utility Monitoring Points
- Convergence Monitoring Points
- Crack Gauges
- Survey Prisms and AMTS

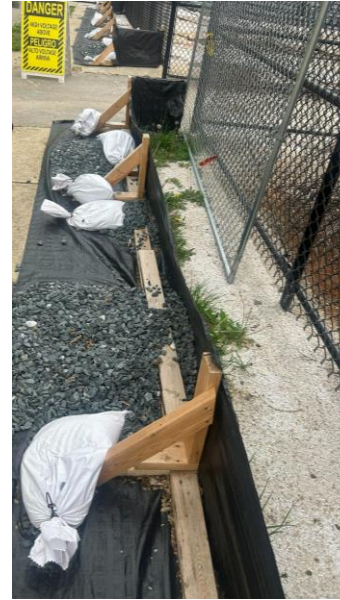




**Join at slido.com
#BPT-Dec2025**

2025 Construction in Review

- Installed site fencing
- Placed erosion & sediment controls
- Started utility relocations
 - W Lafayette Ave
 - N Payson St
 - N Pulaski St
 - W Mulberry St
 - Rayner Ave
 - McMechen St



- Excavated vertical utility siphon shafts (East and West)
- Started excavating horizontal siphon tunnel
- Closed roadway – W Mulberry St (between Warwick and N Smallwood)
- Began railroad bridge construction – over W Mulberry St

Current Program Construction Activity Areas

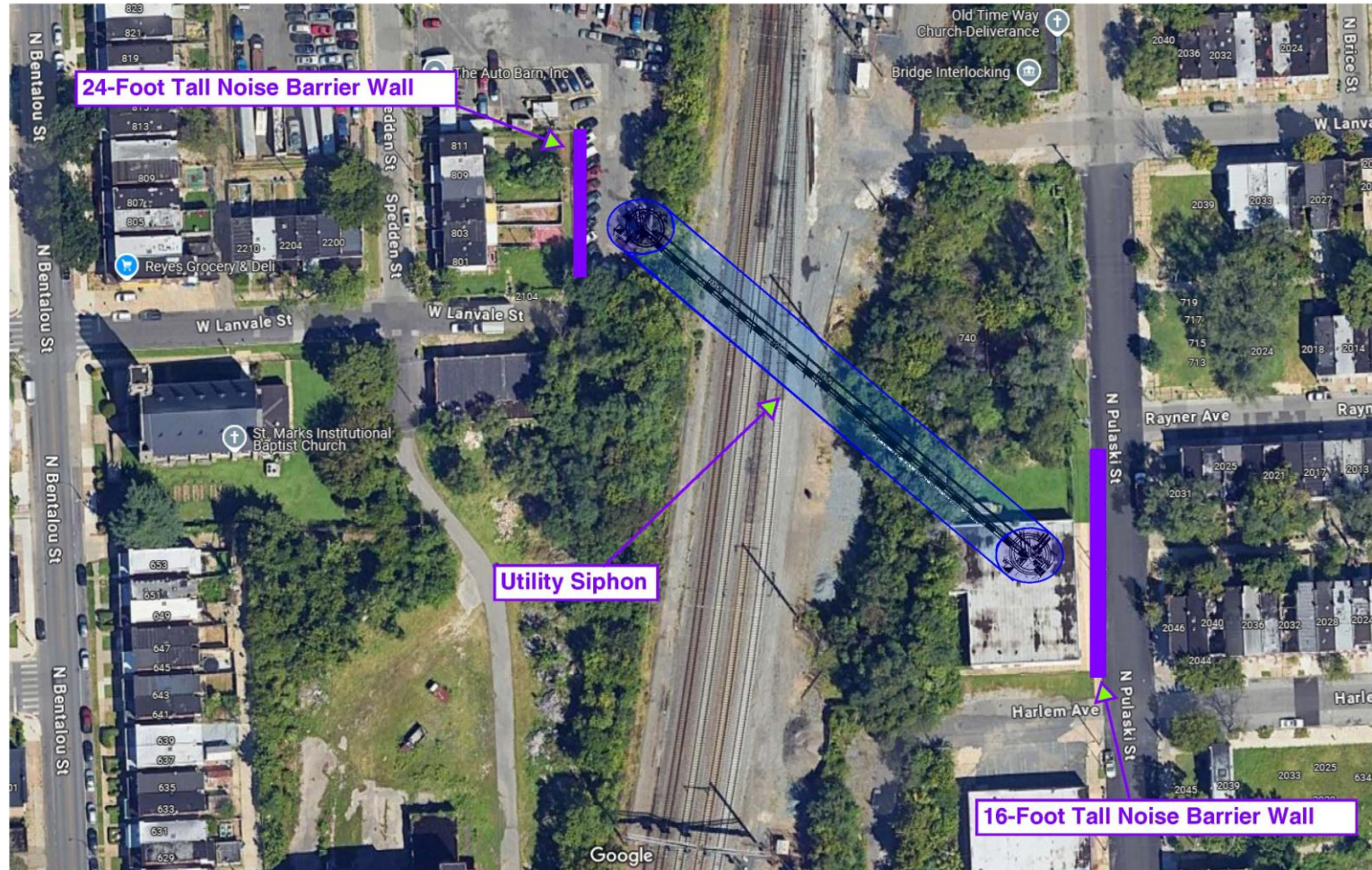


Utility Relocations – 126" Storm Drain



Utility Siphon Tunnel

- Short tunnel to carry utilities beneath the existing NEC railroad tracks
- Two vertical shafts connect the horizontal tunnel
- Temporary noise barrier walls are in place to help with construction noise



East Siphon Tunnel Shaft



West Siphon Tunnel Shaft

6/3/2025



10/20/2025



7/14/2025



11/18/2025



Utility Siphon Tunnel

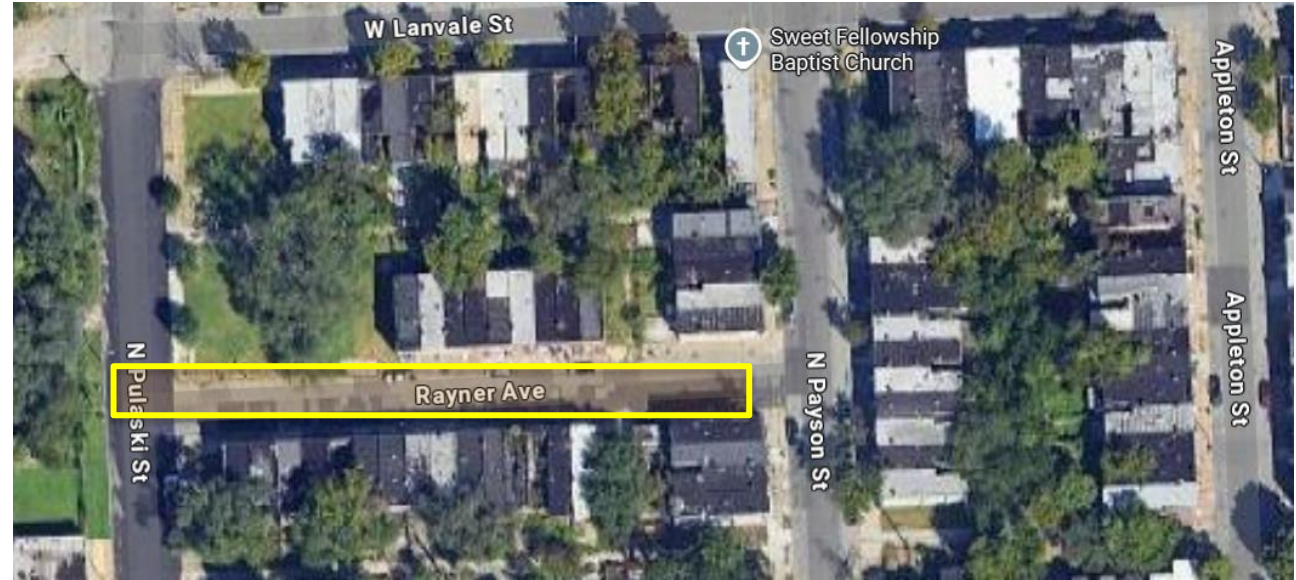


Ongoing Utility Relocations

- Contractors have closed Rayner Ave between N Pulaski and N Payson Streets
- Work is to accommodate a 30" water line relocation
- We will maintain pedestrian access to all properties during construction
- **Duration:**
Approximately 2 months

NEXT STEP

- Closure of N Payson from Rayner Ave to W Lafayette Ave



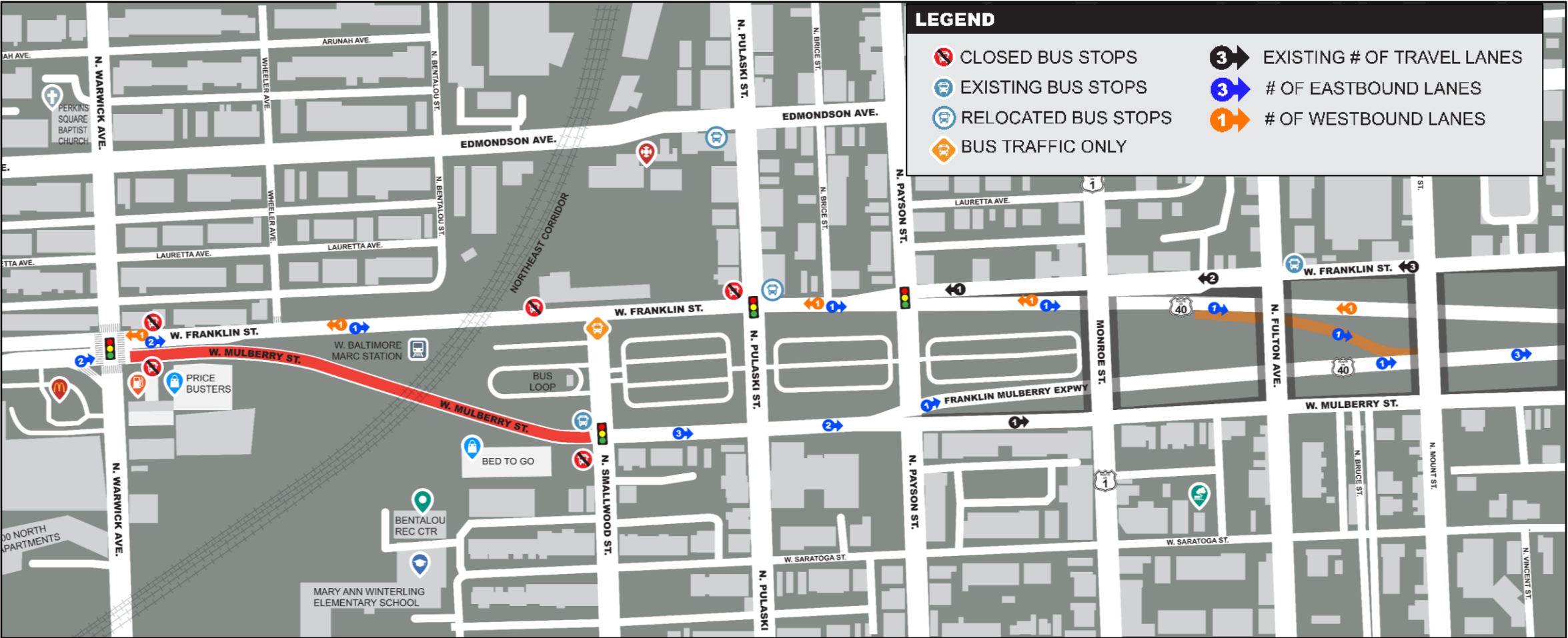
Rayner Avenue Utility Work



W Mulberry St Closure

- **Location:**
 - W Mulberry St between N Warwick and N Smallwood St
- **Timing:**
 - Started August 2025
 - Expected duration: Approx 18 – 24 months
- **Details:**
 - Right in / right out movements at several locations
 - Local traffic only areas
 - Pedestrian (and scooter) crossing locations
 - Shifted bus stops within the corridor
 - W Baltimore MARC parking lot access is maintained

W Mulberry St – Closure Overview



W Mulberry St Closure



W Mulberry St Railroad Bridge

BEFORE



09/2025



W Mulberry St Bridge Construction

09/2025



11/2025



W Mulberry St Construction Site

Mulberry Site from West Baltimore Marc Station platform



Tuesday, October 21st, 2025

McMechen Street Utility Work



Upcoming Construction

- Continue construction of railroad bridge over W Mulberry St
- Continue roadway lowering at W Mulberry St
- Continue utility relocations at south and north ends of the tunnel
- Close N Payson St north of Lafayette Ave
- Start construction of launch pit for future tunnel mining operations

Workforce Development



**STACY
WITBECK**

Clark/Stacy and Witbeck, a Joint Venture

Discover Opportunities in Construction!

How to Get a Job with the Union Workshop

Format: Online Zoom Webinar



Workforce Development



B&P Tunnel Replacement

FREDERICK DOUGLASS TUNNEL
WEST BALTIMORE MARC STATION



CSW Outreach and Events



MLK Day of Service at City of Refuge



Collected 300lbs of clothing for Paul's Place community closet distribution



Career Fair hosted at the Augusta Fells Savage High School



Throw It Down the Chimney with Transformation Nation



A Step Forward Institute Resource & Workforce Development Expo



'How to get a job with the Unions workshops



MD Career Quest

CSW Small Business Outreach



CSW has hosted Subcontractor Outreach events for companies to engage and inform prospective SBE bidders of the opportunities available.

2025 Events by the Number

- 2,500+ Networking events and outreach fairs participants
- 1,165+ In-Person procurement conferences/outreach event participants
- 595+ In-Person subcontractor outreach event participants

KSTC Outreach and Events



The Blue Book Construction Network GC Meet & Greet.



Career Fair at Carver Vocational Tech



MdQI Construction & Engineering Career Day



Sub & Supplier Outreach at Coppin State University



KSTC Pre-Apprentice Open House



The Baltimore Station, KSTC cook and serve veterans



Mock Interviews at Maryland New Direction



Community Engagement in 2026

The Program Engagement Team is committed to meeting with community members and other stakeholders to discuss the Program, answer questions, and learn from the community.

Digital, Traditional, and Media Engagement Tools

- Program website (as needed)
- Program social media (weekly)
- Quarterly Newsletters
- Informational fact sheets and FAQs
- Doorhangers and signage
- Direct mail, email, text messages
- Press Releases and Media Outreach
- Program email and phone number

In-Person Engagement:

- Host ***tri-annual (3)*** in-person and virtual public meetings
- Attend community meetings ***by request***
- Participate in community clean-ups, fairs, events, and community service activities
- Please provide event details to bptunnel@amtrak.com



Which of our social media platforms do you follow? (choose all that apply)

Follow Us on Social Media





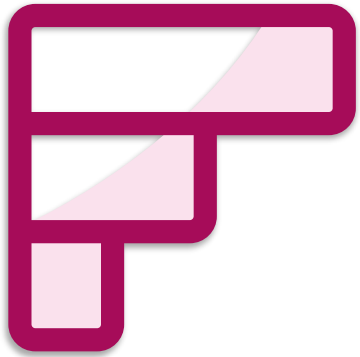
How are you receiving our construction notifications? (choose all that apply)

Sign Up for Email Notifications





What additional methods would you like us to use to communicate construction activities?



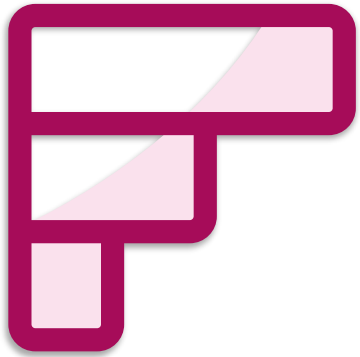
Rank your preferred method to receive urgent or last-minute construction notifications?



How can we improve construction communications?

① The Slido app must be installed on every computer you're presenting from

slido



Rank the topics you would like for us to cover in meetings next year.

Sign Up for Text Message Notifications

- Community members may who opt IN to receive construction and traffic notifications

Text colored **KEYWORDS** below to (833) 917-3749



BPTNorth



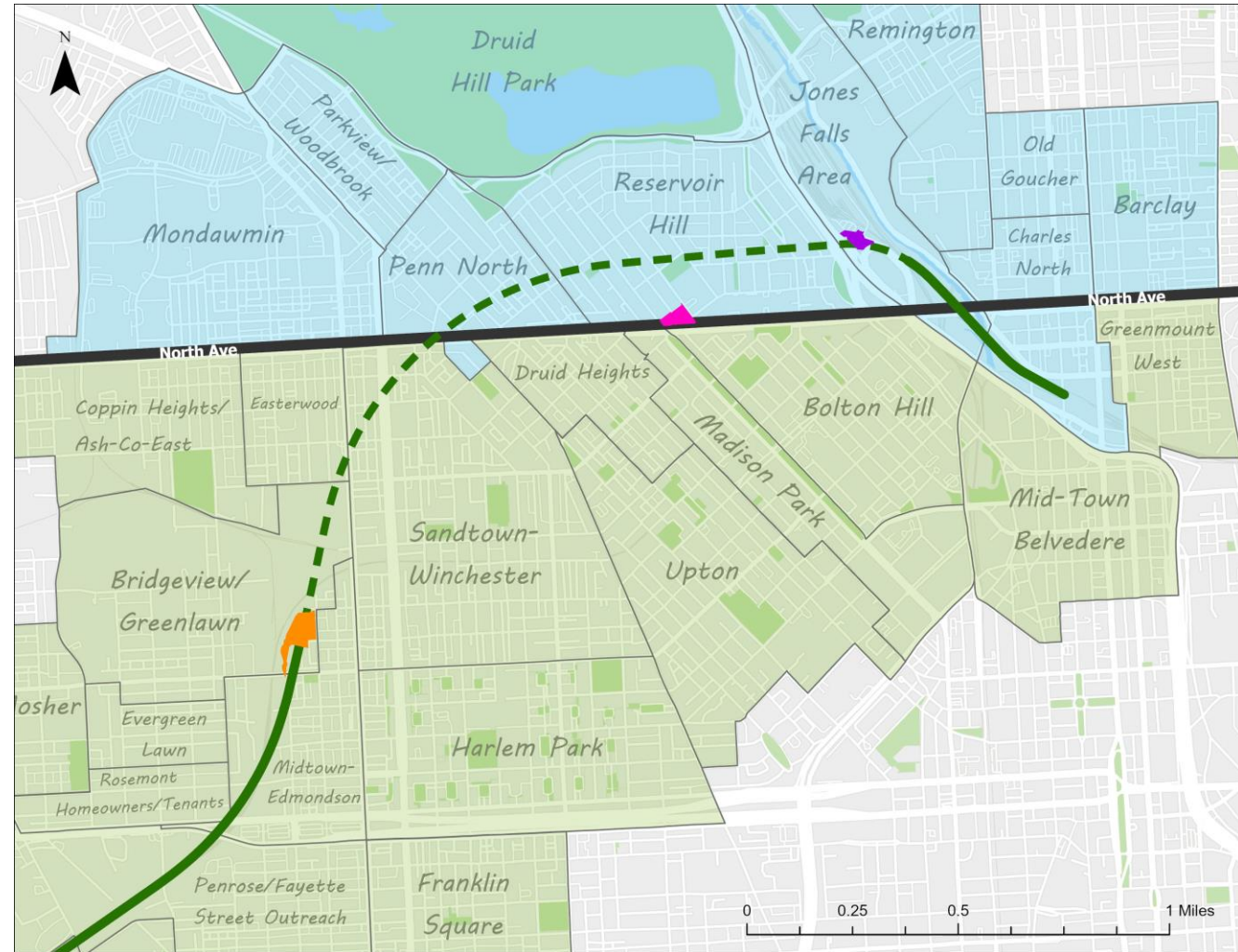
BPTSouth



BPTConstruct



BPTTraffic



Communicating Incidents

- **If there is an emergency, dial 911 and report to the authorities**
- If there is an ongoing / active situation, please **call** the Program outreach team if you have any concerns. Direct communications with our team at (443) 423-1115 will allow the fastest response and/or resolution to your concern. *Leave a voicemail if your call is not answered.* Please be prepared to share:
 - Name
 - Address
 - Best contact method (email, phone)
 - Location of incident
 - Date / time incident observed
 - Incident type and brief description
- If the incident is not ongoing, you are encouraged to **email** all details to bptunnel@amtrak.com.

Identifying our Team

- **We are committed to keeping communities safe during our construction.**
- If you contact us, we may send a few members of our team to meet with you. Our team members will:
 - ALWAYS have Program or company photo identification available
 - Generally wearing an orange construction vest and/or hard hat
- **Please do not hesitate to call us to confirm a team member (443) 423-1115**



Be A Part of History

*Amtrak is gathering stories and photos for a history display in the future
West Baltimore MARC Station*

Story & Photo Themes

- Working for the railroads in the area (Pennsylvania Railroad, Penn Central, Amtrak, or MARC)
- Working at businesses that used the railroad to receive materials or ship freight
- Commuting or personal travel on the train

Interested in participating?

Contact us at bptunnel.com!



Q&A Protocol

- **Reminder, the meeting facilitator is responsible for:**
 - Reading questions and directing to the appropriate subject matter expert
 - Keeping questions to a single follow up
 - Providing appropriate opportunities for all attendees to participate
- **To support a successful Q&A, we ask that attendees:**
 - Please respect the opinions of others
 - Submit questions in the Slido Q&A
 - Raise your hand (*5) to be unmuted (*6) if calling by phone
 - Allow experts to answer questions without interruption
 - Limit themselves to one follow up/clarifying question

Construction Questions? Contact Us

- Amtrak has a designated team of professionals available to talk with community members
- **Phone (443) 423-1115**
Available Monday – Friday
9:00AM – 5:00PM
 - After hours, please leave a message.
- **Email bptunnel@amtrak.com**

*Our goal is to respond within
1 business day to any construction
related inquiries*



Questions & Discussion

B&P Tunnel Replacement

FREDERICK DOUGLASS TUNNEL
WEST BALTIMORE MARC STATION



AMTRAK®