



**PLEASE NOTE:**  
This meeting is  
being recorded.

# Welcome

## Frederick Douglass Tunnel Program

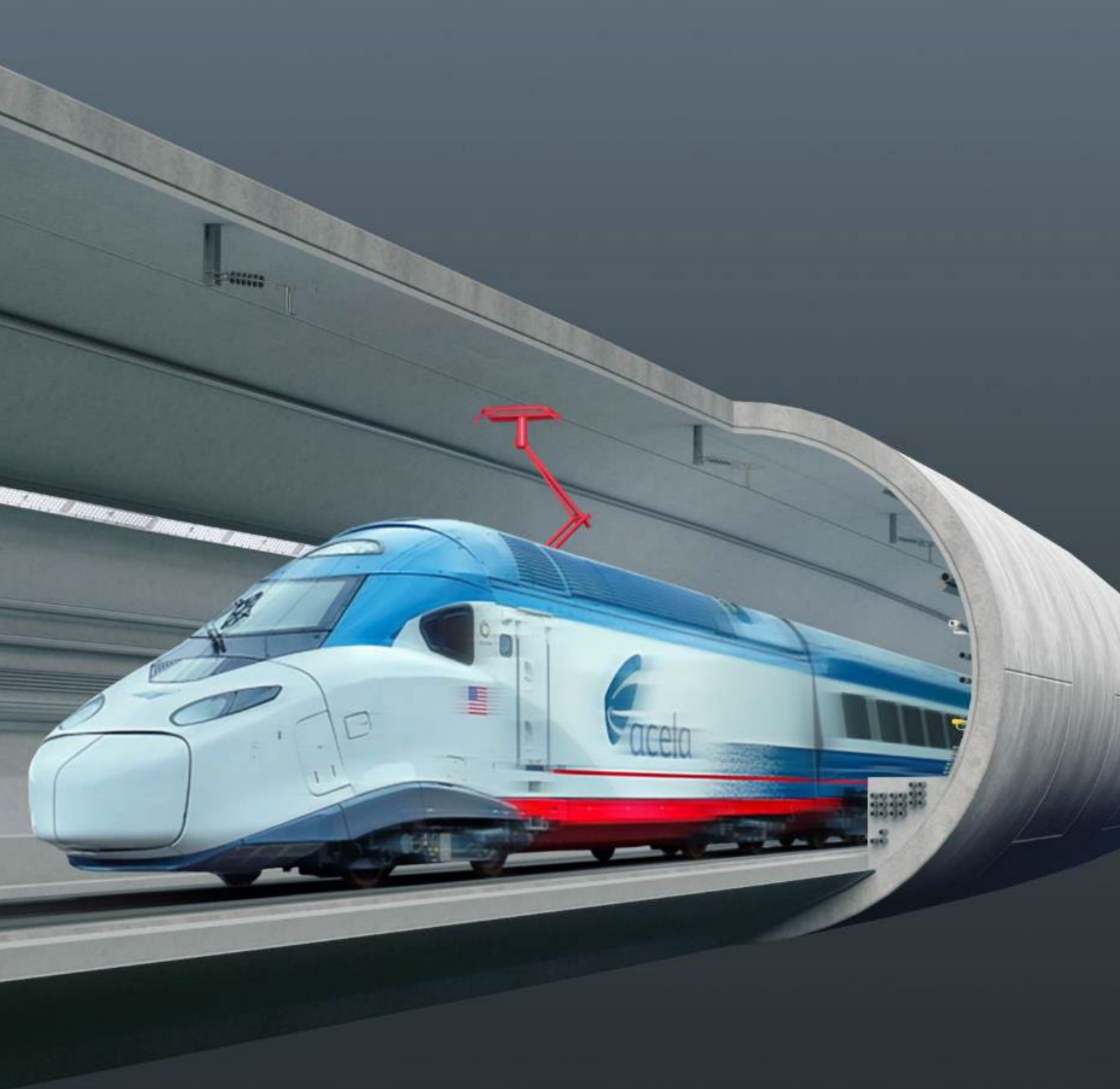
### Bi-Monthly Program Outreach Meeting

Monday, July 22, 2024  
Virtual Meeting



# Agenda

1. Program Background & Overview
2. Community
3. West Baltimore MARC Station
4. Construction Activities
5. Stay Informed
6. Questions & Answers



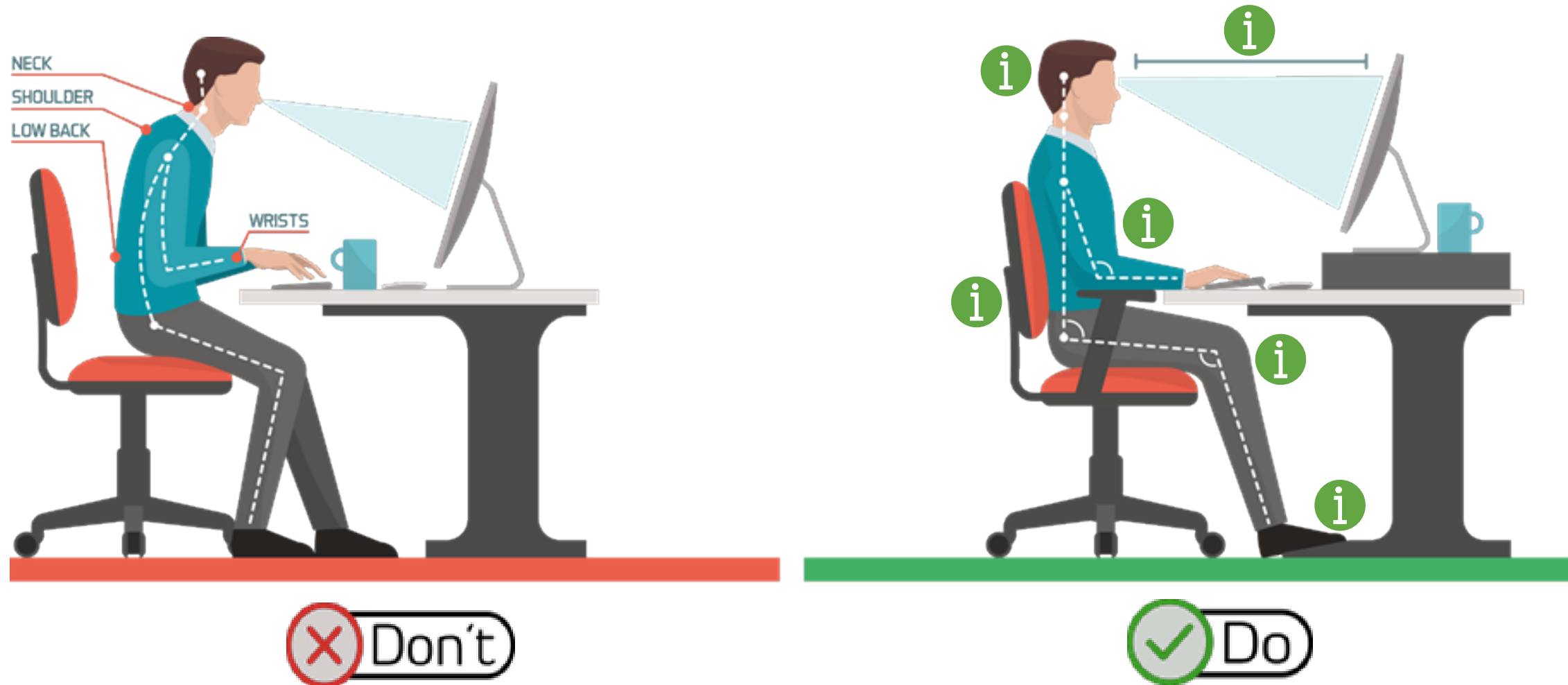
Rendering is for illustrative purposes only



# Virtual Meeting Safety Reminder

- Be aware of your surroundings
- Push your chair in if you get up
- Use covered containers for beverages

- **Monitor distance** – Should be 18" to 24" from your eyes
- **Monitor height** – Top of the monitor should be eye-level and slightly tilted
- **Arms** – Relax shoulders; forearms parallel to the floor; minimal bend at the wrist
- **Chair** – Should have a backrest and armrests; adjust height
- **Legs** – Thighs parallel to the floor
- **Feet** – Parallel to the floor; use a footrest if necessary



# Virtual Meeting Guidelines

- Please note: This presentation is being **recorded** and will be available in a few days on the Frederick Douglass Tunnel Program website
- The facilitator's role is to help the move through the presentation and lead the community and subject matter experts through the Q&A
- Attendees are encouraged to submit your questions during the meeting using the Slido Q&A chat
- We will respond to questions in the order they were received during a facilitated discussion at the end of the presentation
- If you are joining via phone call, please press \*5 to raise your hand and we will unmute you (\*6) to allow you to ask your question
- If you have questions regarding topics not being covered in tonight's presentation, please contact us via email at [fdtunnel@amtrak.com](mailto:fdtunnel@amtrak.com) or call (443) 423-1115

# Using Slido / Submitting Questions

During the meeting, we ask that individuals use the Slido tool to provide feedback and ask questions.

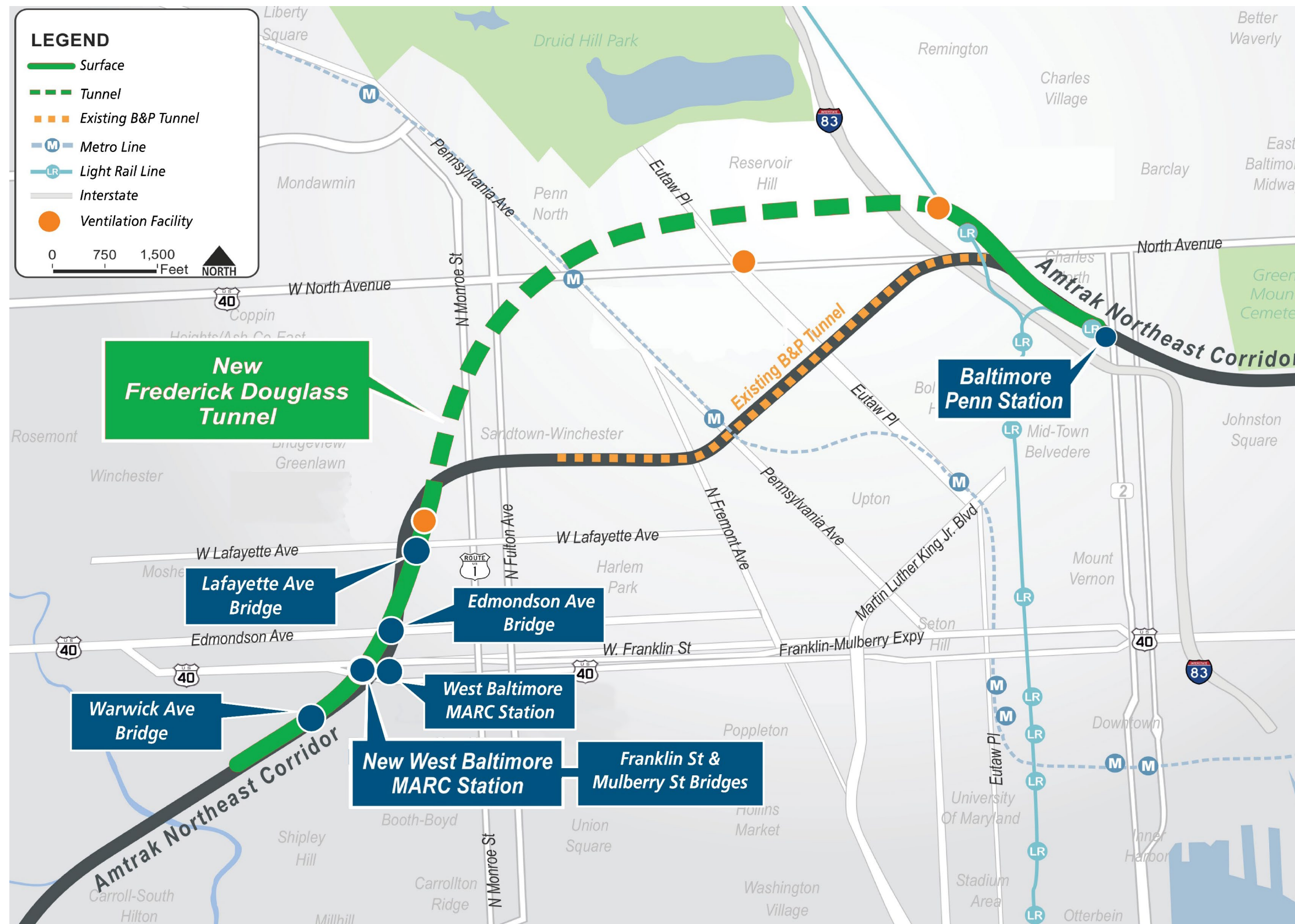
We are also offering two methods to submit questions or comments at the end of the presentation:

1. Submit your question/comment during the presentation using Slido.
  - Go to Slido.com (enter code #FDT-July2024 or scan the QR code with your smartphone)
  - Use the Q&A function to submit a question
2. Raise your hand to speak during the Q&A portion of the meeting (callers only)

# Program Overview



# Program Overview Map



# Program Background

**Existing tunnel is over 150 Years old...  
Nearly as old as Druid Hill Park!**

Carries 9 million MARC & Amtrak passengers per year on the Northeast Corridor (NEC)  
(MARC's Penn Line)

## Top Issues:

- Aging structure
- Trains frequently delayed traveling through the tunnel with speeds limited to 30 mph maximum
- High maintenance (frequent outages)
- No redundancy & resiliency
- Biggest rail bottleneck between Washington DC and New Jersey





# Program Overview

**The Frederick Douglass Tunnel Program will modernize a key section of the Northeast Corridor (NEC)**

- 10 miles of rail improvements along the NEC
- ~2 miles of new tunnel per bore in West Baltimore (two tunnel bores)
- New and improved railroad infrastructure
- New ADA-accessible West Baltimore MARC Station
- State-of-the-art modern fire/life safety systems
- 5 Bridge replacements in Baltimore City (2 roadway, 3 railroad bridges)
- 11 Baltimore City roadway modifications
- Noise barriers in Midtown Edmondson and Greater Rosemont communities

# Program Benefits



\$50 million for  
**COMMUNITY  
INVESTMENTS**



Local jobs centers to  
train the **WORKFORCE**



Increased **ACCESS  
TO REGIONAL JOBS**  
for Baltimore City  
residents



Approximately  
**20,000 JOBS  
GENERATED** over the  
course of construction



Construction of a new  
**ADA-ACCESSIBLE**  
West Baltimore  
**MARC STATION**



**IMPROVEMENTS** to  
roadway and bridge  
**INFRASTRUCTURE**



**ENVIRONMENTAL  
SUSTAINABILITY**  
addition of electrified  
trains and solar powered  
facilities and stations



**ACCESS TO SALVAGE  
MATERIALS** for residents  
of Midtown Edmondson  
and Edmondson Avenue  
Historic Districts



**RELIABILITY,  
REDUNDANCY** and  
**RESILIENCY** for MARC  
and Amtrak trains



Construction of a  
**NEW TUNNEL**, named  
in honor of Frederick  
Douglass



**IMPROVED TRIP  
TIME.** Travel from  
Baltimore to  
Washington in under  
30 minutes



Complete  
**MODERNIZATION** of  
Amtrak's **NORTHEAST  
CORRIDOR** in West  
Baltimore

Frederick Douglass Tunnel  
B&P TUNNEL REPLACEMENT





# Community Engagement

# Community Priorities

14

## What We Heard About

## What We're Doing

Community  
Feedback



Extending time for  
questions and  
answers to 8:15PM  
tonight

Providing experts  
during in-house  
meeting on  
Wednesday until  
8:15PM

Community  
Investment  
Program



Published  
"Community  
Investment  
Program Guide" in  
April; copies  
available on  
Amtrak.com

Developing  
initial  
funding  
criteria

Offering grant-  
writing assistance  
to eligible  
community  
organizations

# Community Priorities

## What We Heard About

## What We're Doing

Vibration  
Concerns &  
Property Rights

Offering pre-construction  
surveys & copies of the report  
free of charge to owners.

Installing  
equipment to  
monitor noise and  
vibration during  
construction

Ventilation  
Facilities

Intermediate  
Ventilation Facility  
(IVF) vents located  
away from the school  
on south side of the  
building

Fans will operate  
less than an hour  
a month for  
testing and in  
emergencies only

# Community Priorities

## What We Heard About

## What We're Doing

West Baltimore  
MARC Station



Added an enclosed, climate-controlled waiting area

Incorporated restrooms into new design

Addressed N Bentalou access, as requested

Construction Notification



Posting door hangers and sending mailers

Presenting at community meetings

Distributing quarterly Newsletters; Sending text messages



# Community Engagement – Mid Year Recap

17

## Public Meetings

- January 2024 – Lafayette and Payson Park – Virtual Mtg
- February 2024 – Real Estate & South Approach – Mary Ann Winterling E.S.
- March 2024 – Meet the Contractor – Carver Vocational H.S
- May 2024 – Ventilation Facilities – Mt Royal E.S.
- **July 2024 – W Baltimore MARC & Construction – Mary Ann Winterling E.S.**

## Community Meetings

- January 2024 – Reservoir Hill
- Feb 2024 – Druid Heights CDC
- April 2024 – Matthew Henson Community
- May 2024 – Sandtown Winchester Community Collective
- July 2024 – Matthew Henson Community

# Community Engagement – Mid Year Recap

18

## Outreach / Stewardship Events

- February 2024 – Mary Ann Winterling Black History Month
- April 2024 – Druid Heights Community Clean Up
- May 2024 – No Boundaries Coalition Block Party
- May 2024 – Sowebo Fest
- June 2024 – Charles Street Promenade
- June 2024 – OMEGA Fest
- July 2024 – Community Unity Day

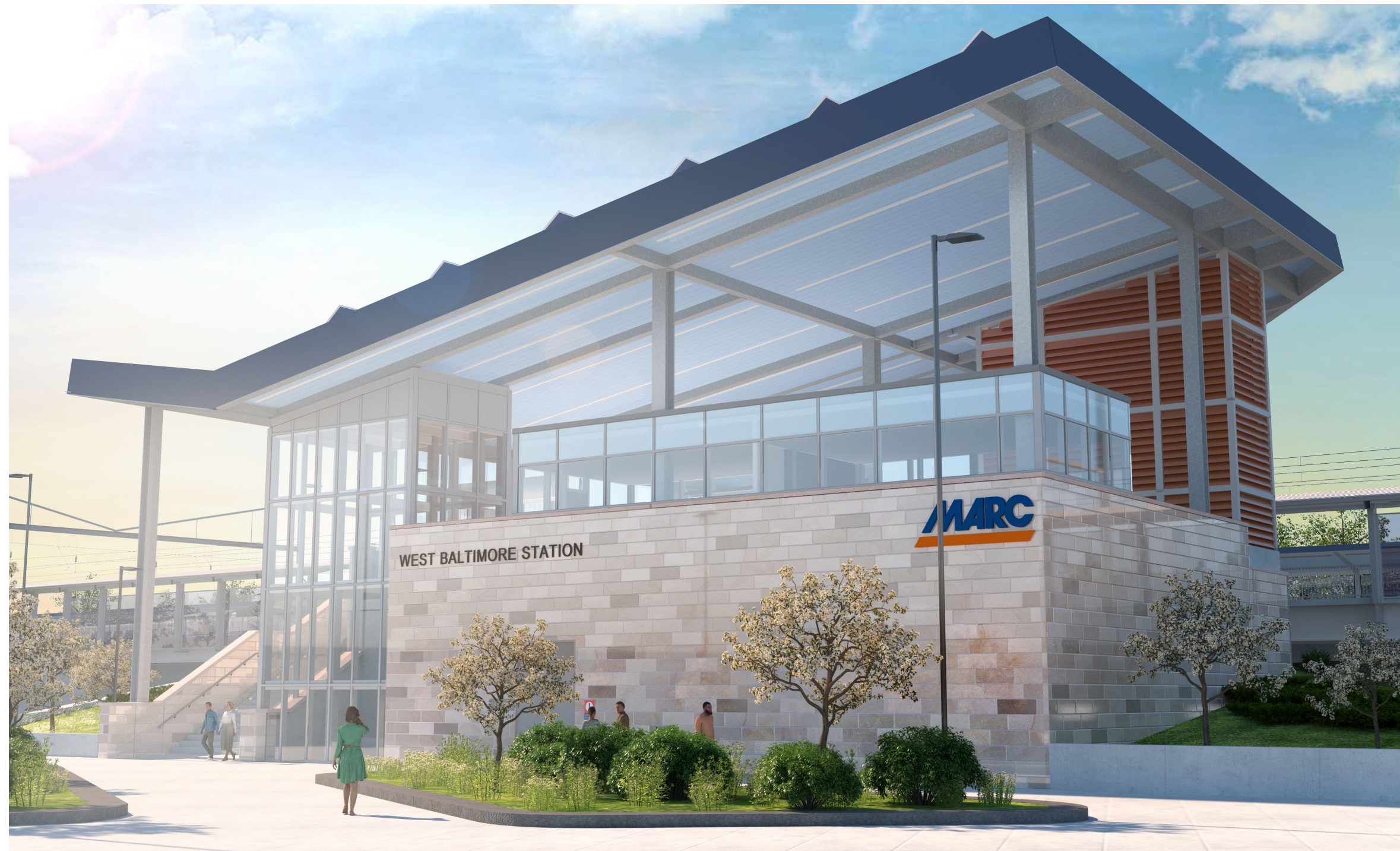
## Other Activities

- CIP Guide
- Newsletters – 2 (February and May, 2024)
- Demolition doorhangers
- Soil boring notifications



# West Baltimore MARC Station

19





# Station Design Objectives





# Existing Conditions at WBAL MARC Station<sup>21</sup>





# Existing Conditions at WBAL MARC Station

## Northbound Platform (To Perryville)



## Southbound Platform (To DC)





# Community-Informed Design

*Interest in enclosed conditioned waiting areas at the station*



*Two new enclosed waiting areas are being provided*



*Desire for restroom facilities at new MARC station.*



*Restroom being provided to serve bus and MARC rail passengers*



*Safety concerns about informal pickup and drop-off*



*Pick-up drop-off being provided at Lot B*



*Concerns about pedestrian safety*



*New fencing on both sides of Franklin and Mulberry along the sidewalks*



*Access concerns at N Bentalou*

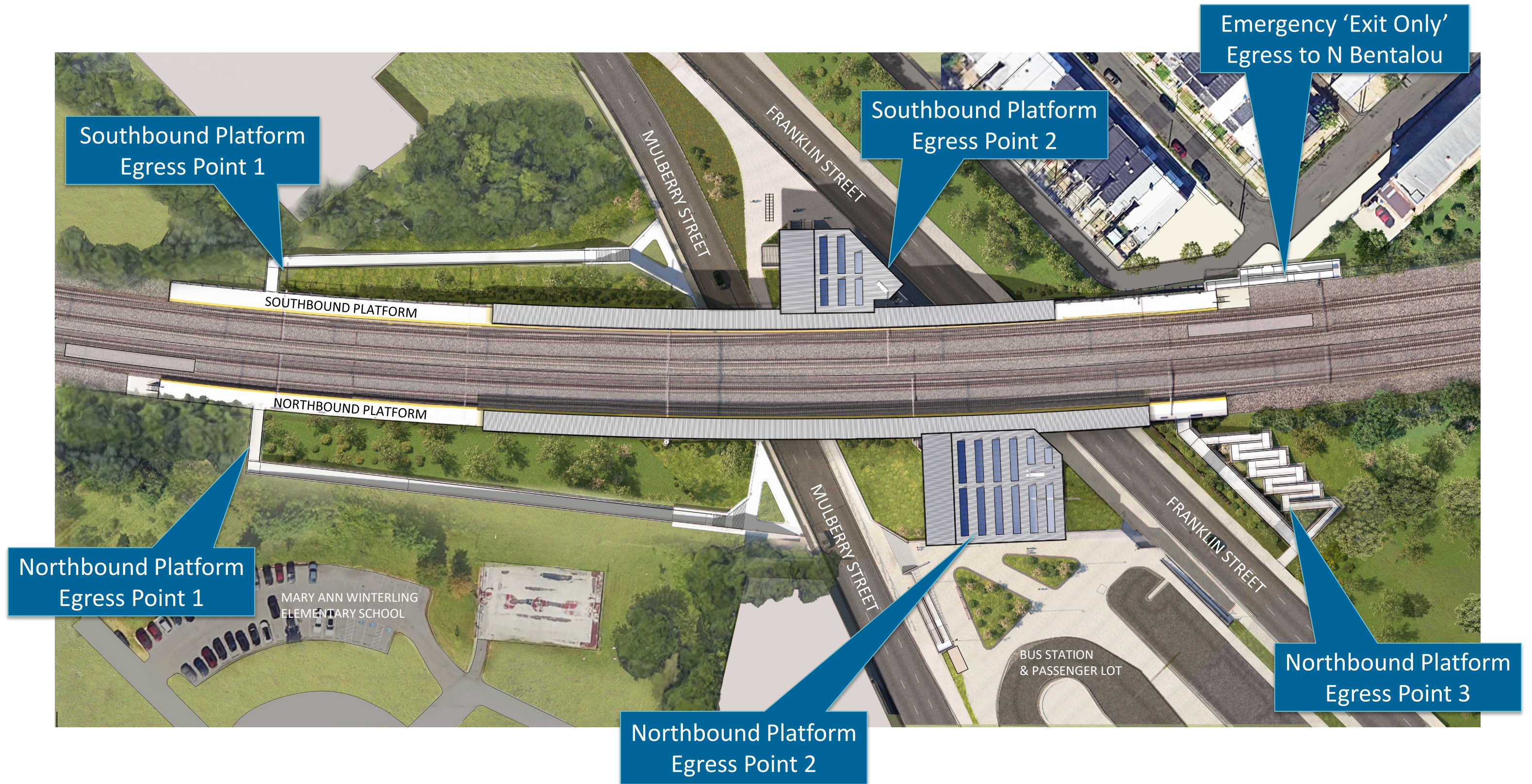


*New gate and fencing has been included in the design to prevent station access at N Bentalou*





# Station Overview



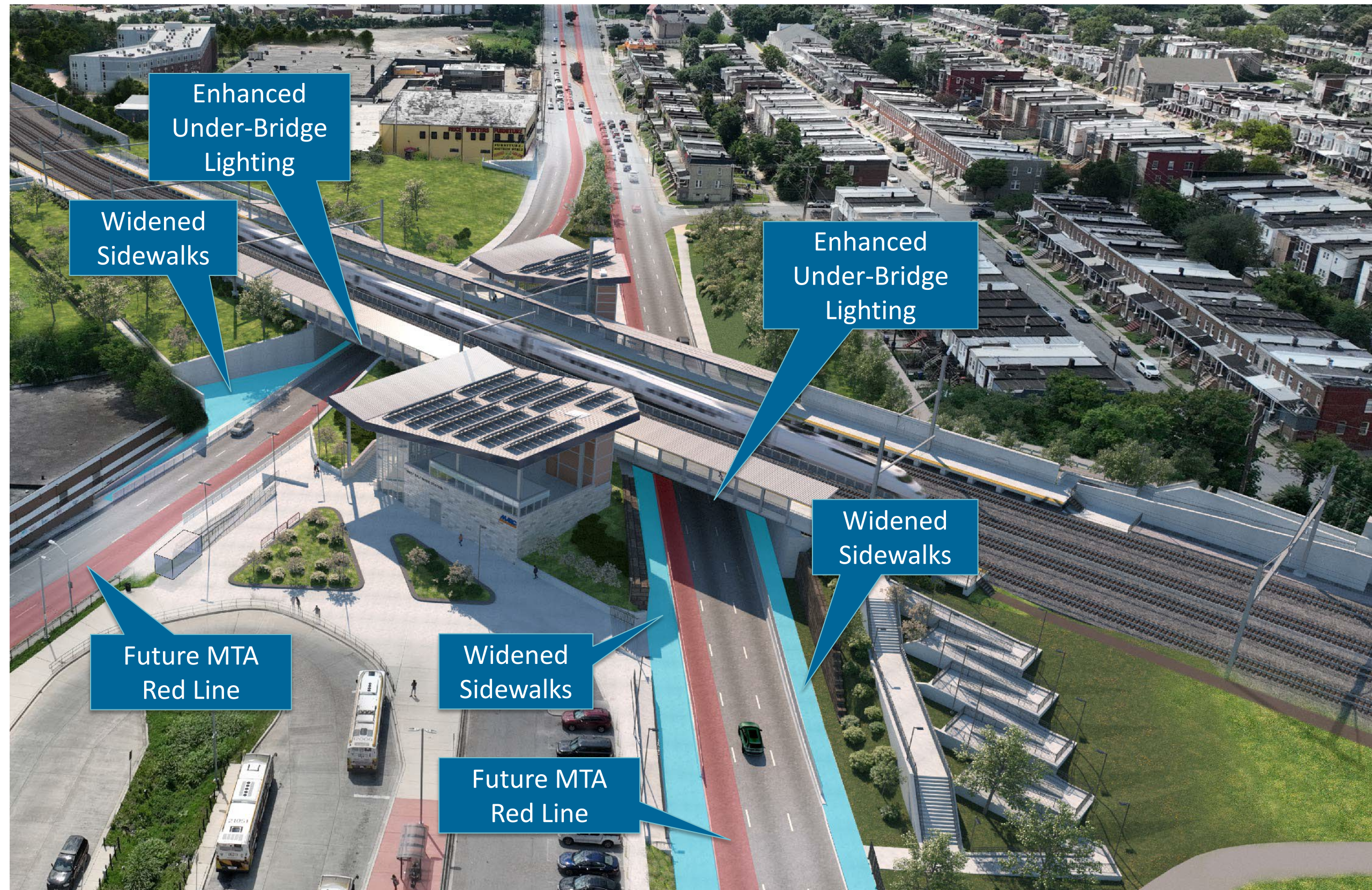


# ADA Accessibility



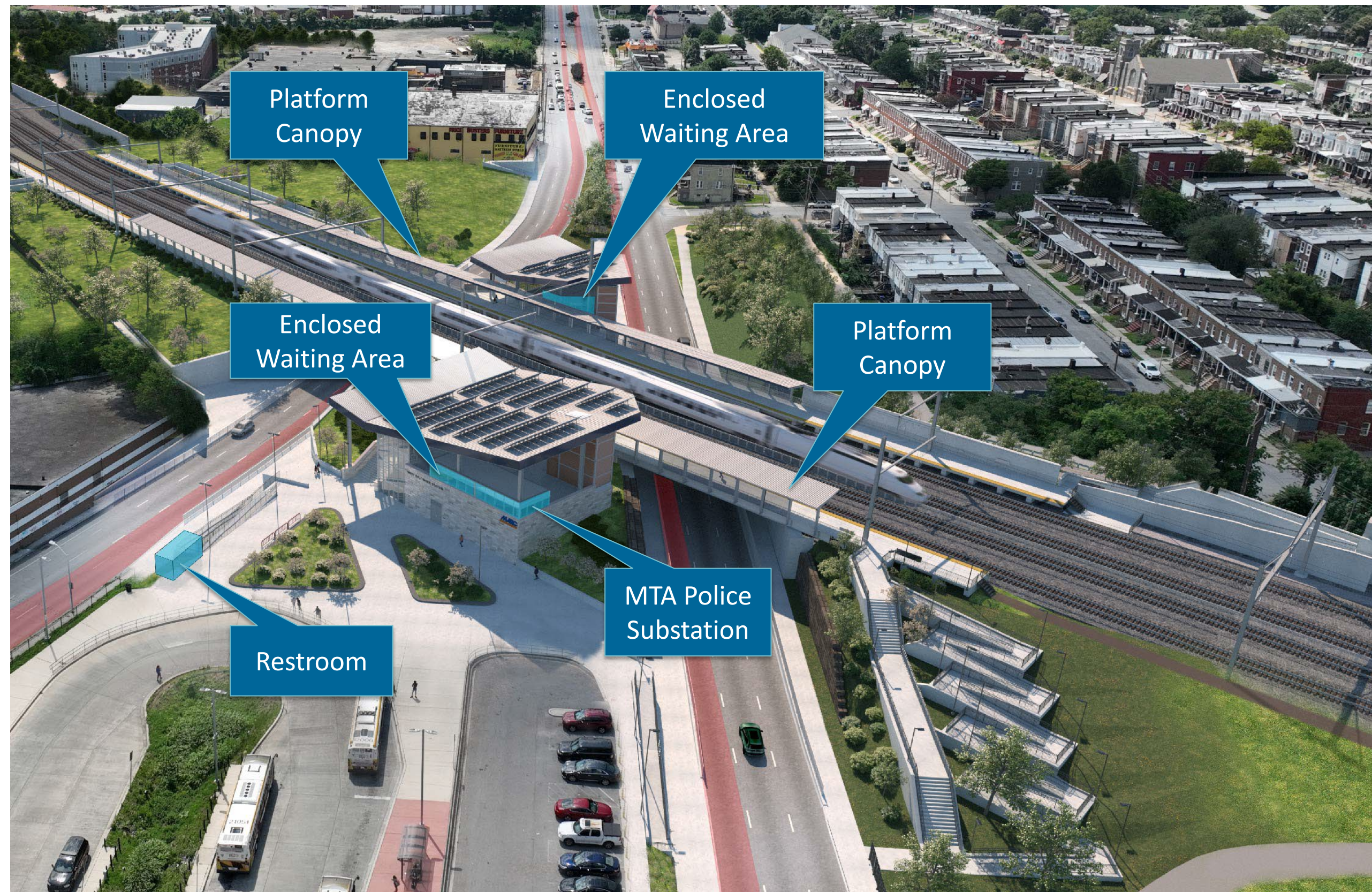


# Roadway Improvements





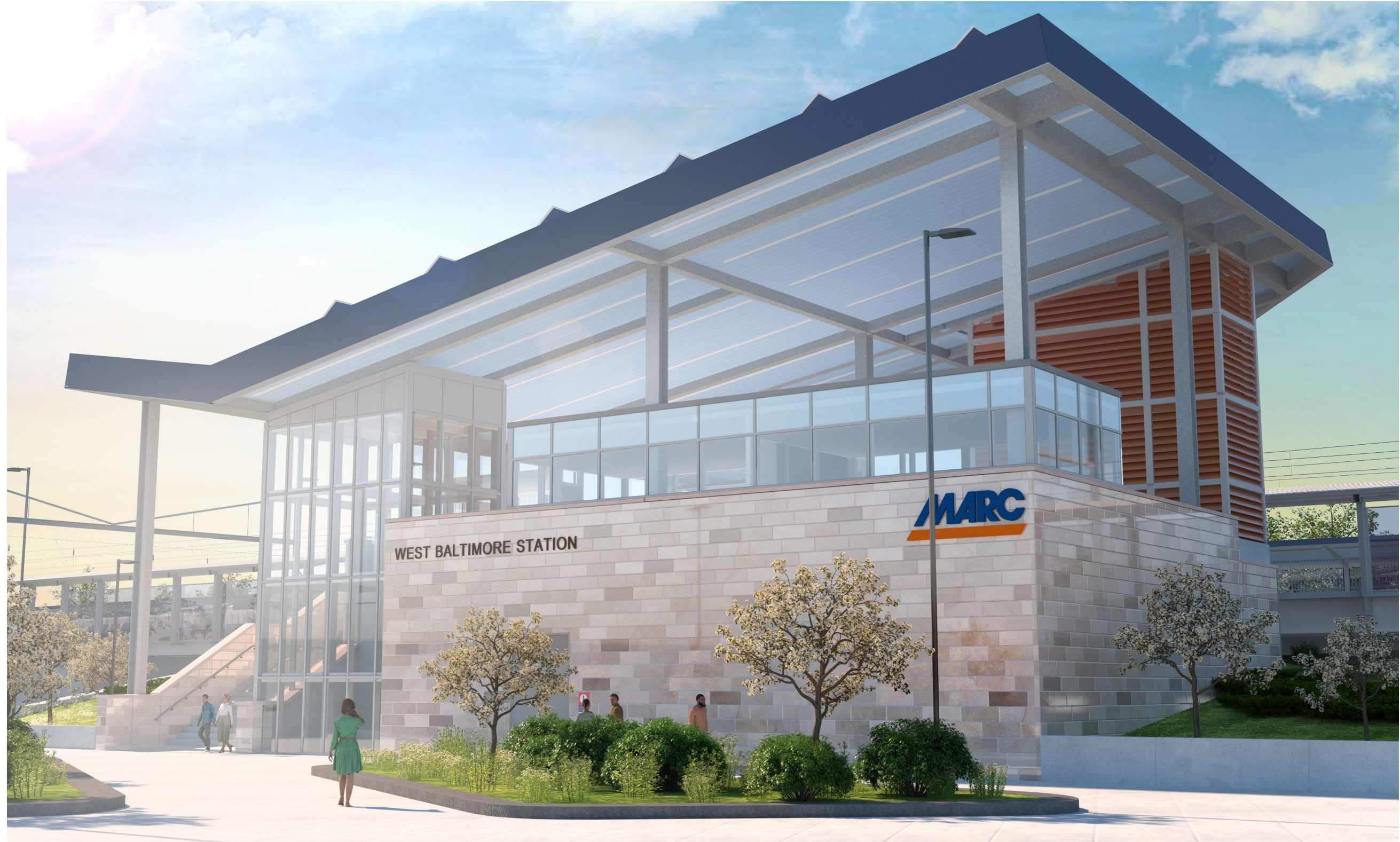
# Station Features





# WBAL MARC - Station Northbound Side

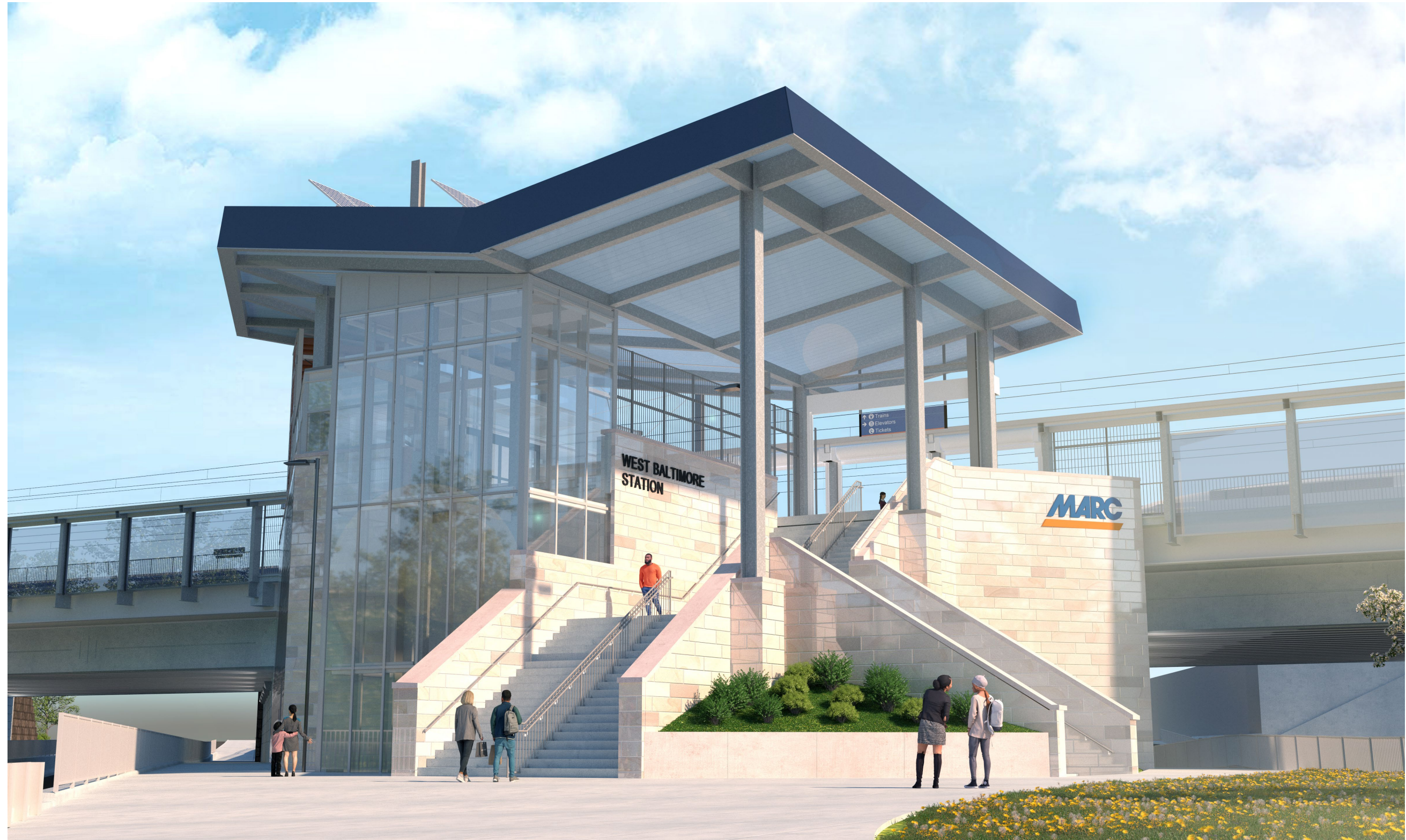
28





# WBAL MARC - Station Southbound Side

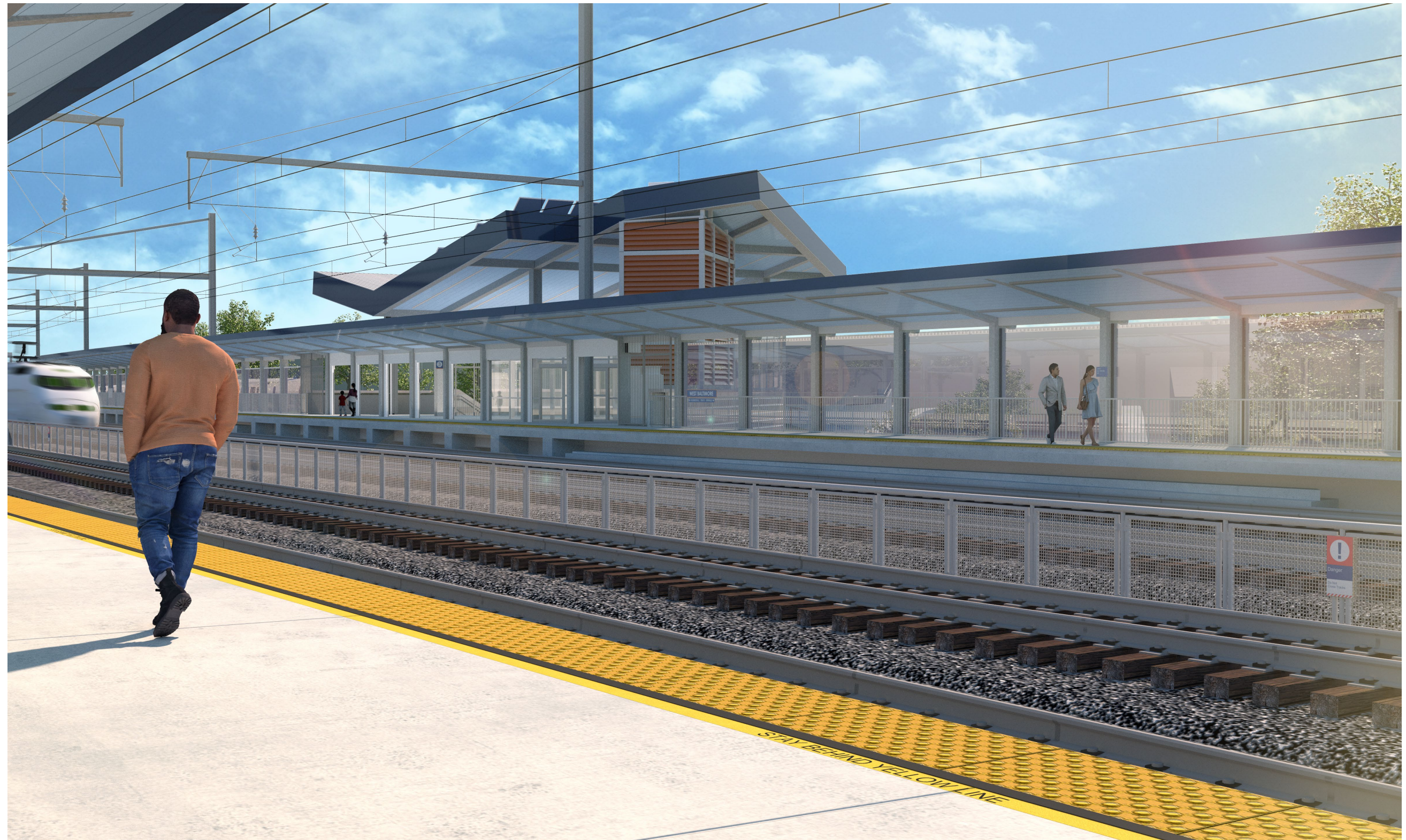
29





# WBAL MARC – Station Platform

30





# WBAL MARC – Mulberry St looking West

31





# WBAL MARC – Franklin St looking East

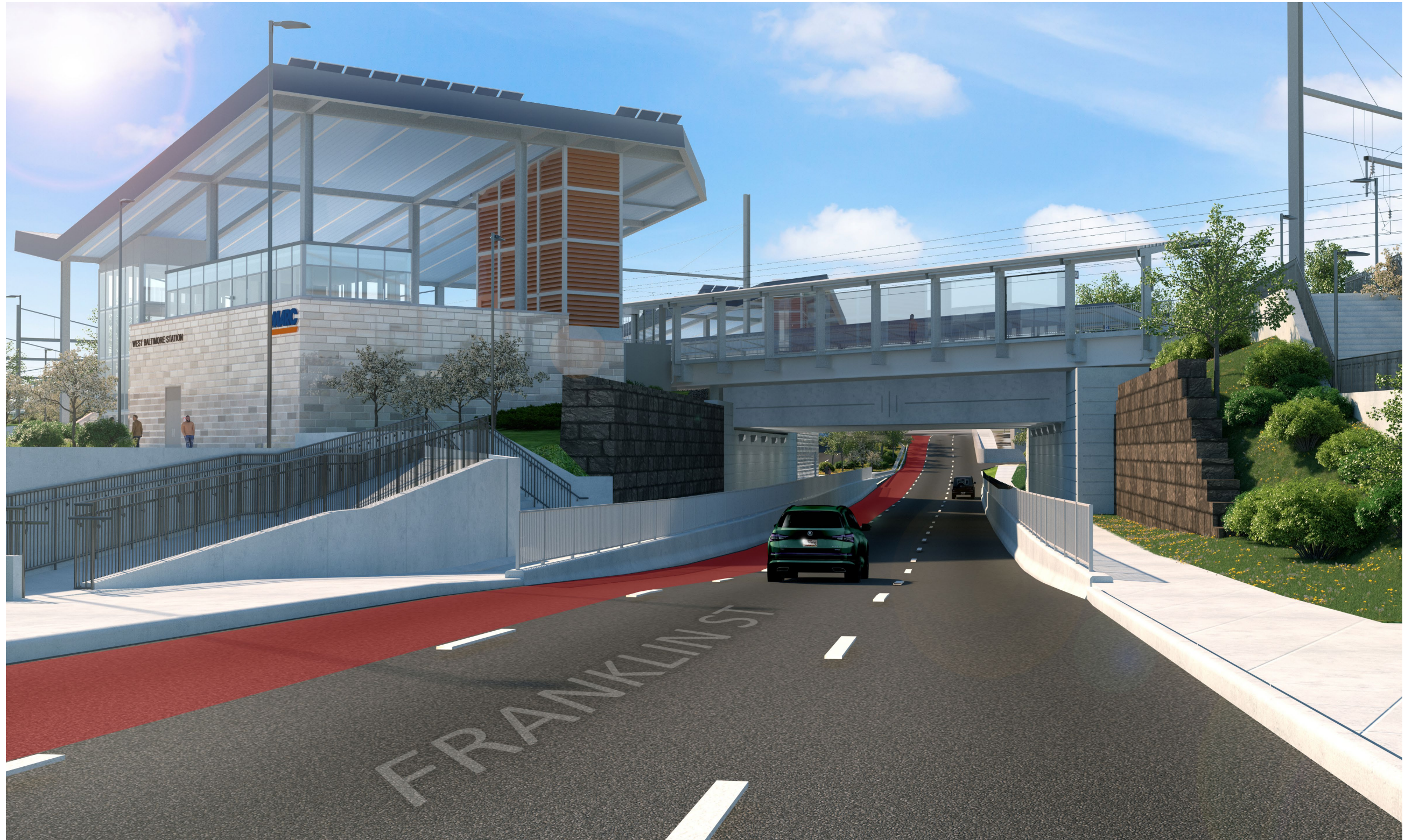
32





# WBAL MARC - Franklin St looking West

33





# Northbound Waiting Area

34





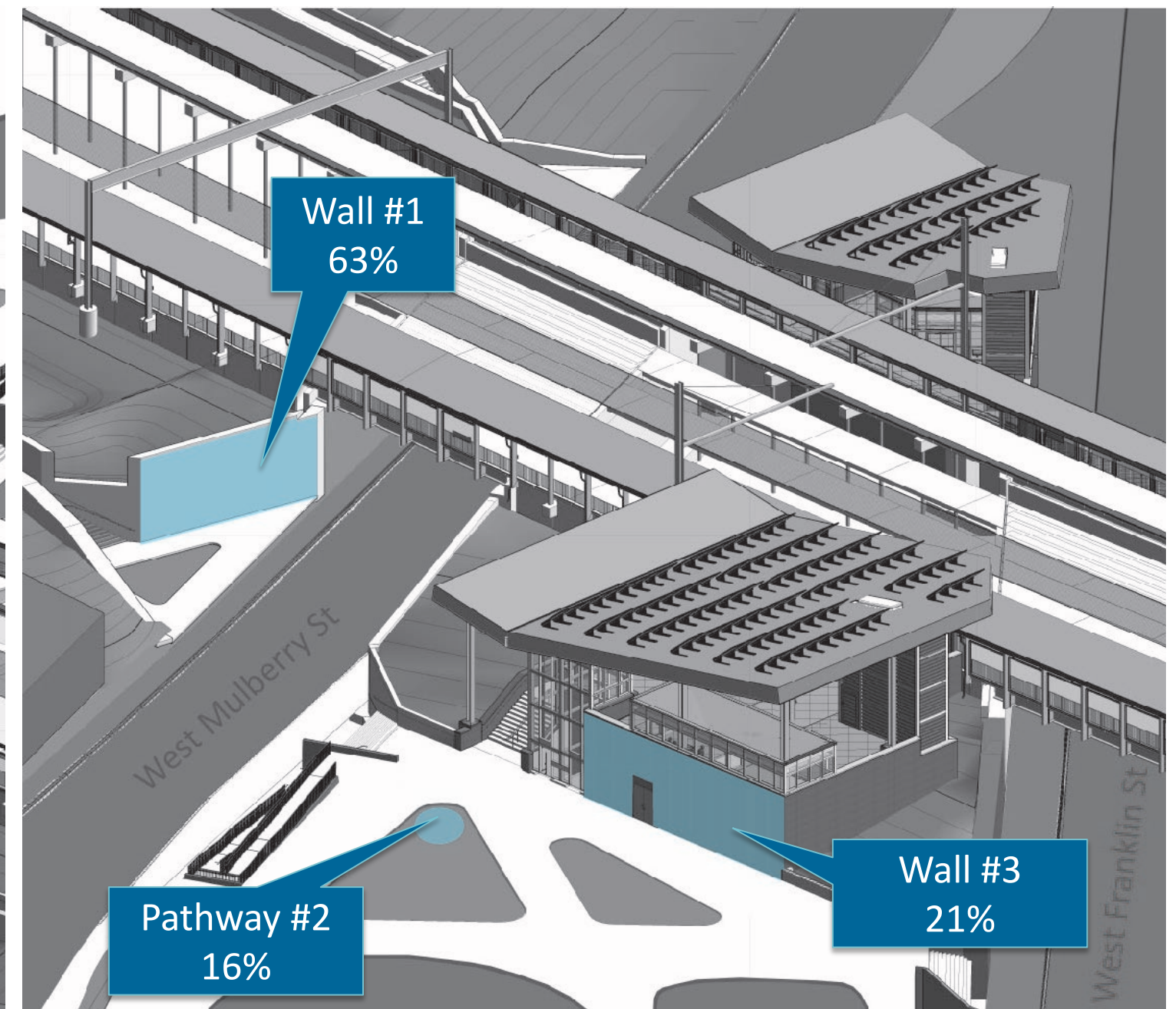
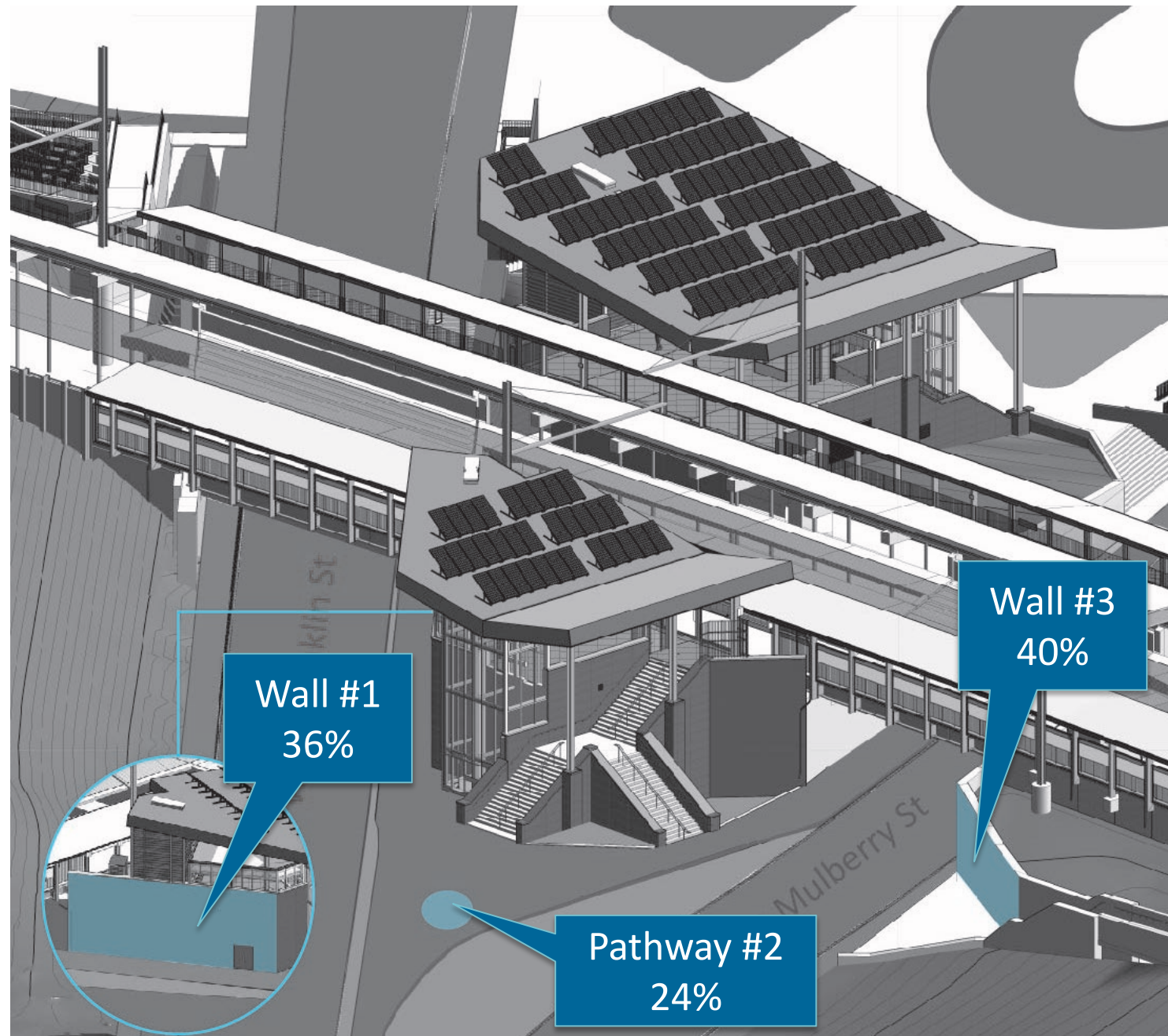
# Southbound Waiting Area

35



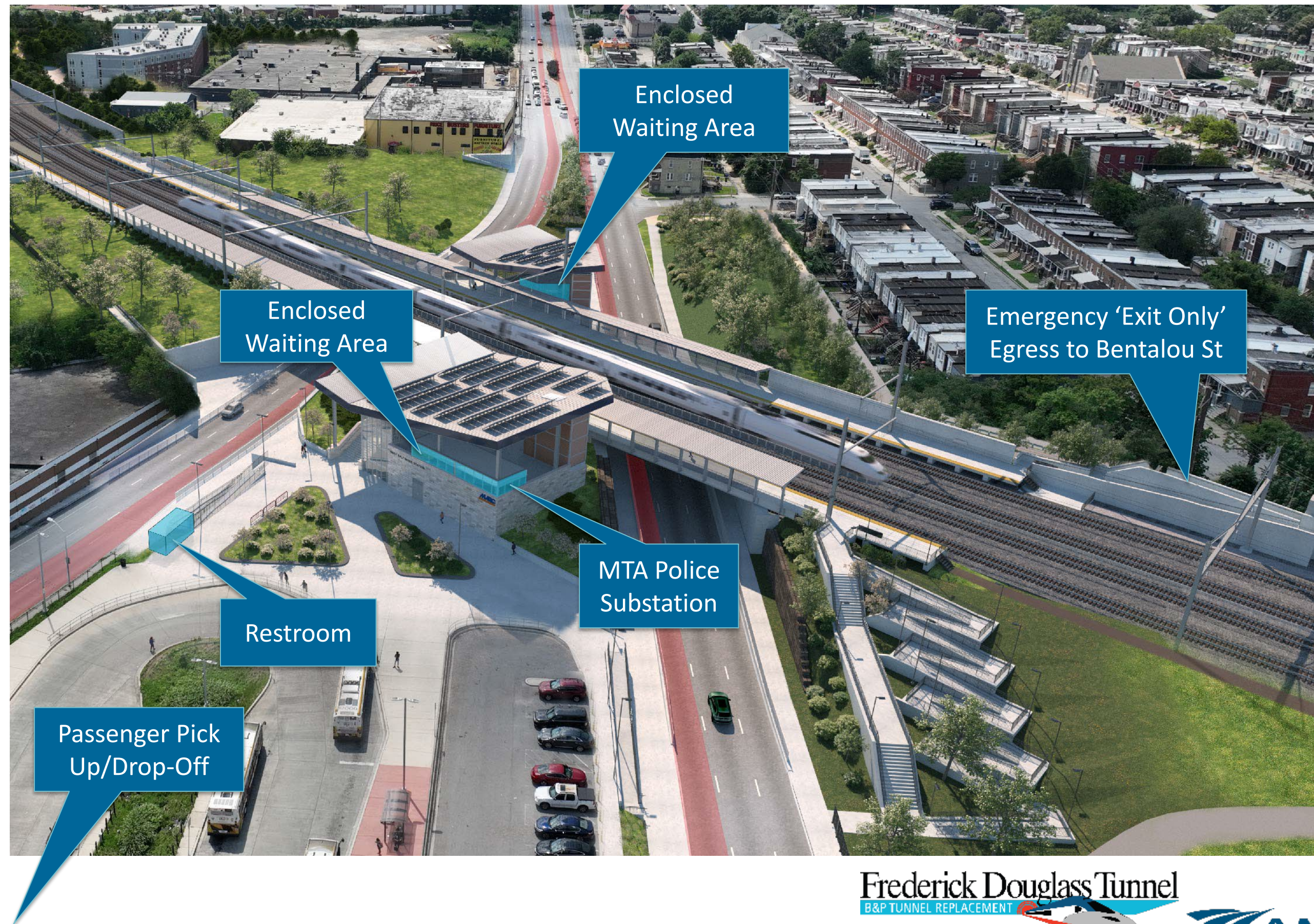


# Potential Public Artwork Locations





# New Station Amenities





# Emergency Exit at N. Bentalou St.





# Enhanced Pick-Up & Drop-off at Lot B





# Upcoming Construction Activities and Schedule



# Construction Overview





# Early Construction Work Areas

Summer 2024 / Fall 2024 / Winter 2025

## Soil Boring Locations

Ducatel St	Monroe St	Westwood Ave	Franklin St
Payson St	McKean Ave	Whitelock St	Mulberry St
			Linden Ave

## Construction Mobilization Locations

- Payson St – Fall 2024
- Linden Ave at W North Ave – Fall 2024
- Near MTA LR yard (nights and weekend)



# Construction Schedule Overview





# Construction Schedule – Early Work

Year	2024	2025	2026	2027
North Ventilation Facility Utility Relocations				
Intermediate Ventilation Facility Utility Relocations				
Southern Approach Structure Utilities				
Tunnel South Portal Utilities				
Mulberry Street Lowering & Bridge Construction				



# Program Schedule – Milestones 2024

## Q3 2024

Mobilize at **Payson Street**  
**900 & 1000 Blocks**  
to begin site set up

Mobilize at **Pulaski Street**  
**700 & 800 Blocks**  
to begin site set up

## Q4 2024

Mobilize at Intermediate Ventilation Facility (IVF)  
(**Eutaw Place, Jordan Avenue, Linden Avenue,**  
**and W. North Avenue**)



# Program Schedule – Milestones Early 2025

46

2025 Q1

Mobilize & Full Closure and Detour of Mulberry Street between Warwick Ave and Smallwood St.

Mobilize at Wilkens Avenue Interlocking East

2025 Q3

Mobilize at NVF (McMechen Street, W. North Ave)



# Pre-Construction Surveys & Construction Monitoring



# Pre-Construction Surveys



- The contractors have hired engineering firms to conduct pre-existing condition surveys of homes and buildings in the neighborhoods adjacent to planned work near the South Approach, Intermediate Ventilation Facility and North Ventilation Facility
- Inspections will document the current interior and exterior conditions of the surveyed properties
- Property owners will receive notification via FedEx or UPS explaining the survey process
- The survey team will work with property owners to schedule appointments within the next 3 months
- Each property owner will receive a copy of the completed preconstruction survey report



# Pre-Construction Surveys – Installation

- A person 18 years of age or older must be present during the survey
- Pre-construction survey and equipment monitoring installation takes 1-hour each
- Copy of the pre-construction survey report and associated images will be made available to the property owner once completed at no cost
- Monitoring devices will be secure and information only available to survey team

## Appointment Availability

- Monday – Friday, 7:00 am – 6:00 pm
- Alternate days to accommodate property owner schedules (evenings/weekends)
- Surveys must be done during daylight hours





# Construction Monitoring



- CSW will install various instruments to monitor for movement as coordinated and permitted with Baltimore City agencies
  - In ground to measure potential movement and groundwater
  - On adjacent structures (with owner permission)
  - On ground surface
  - On utilities
- CSW will also monitor noise and vibration
- CSW will establish baseline readings of current background noise and vibration for at least 30 days prior to the start of construction



# Vibration Monitoring Devices



## OPTICAL PRISM

(Quarter provided for scale reference)



## TILTMETER

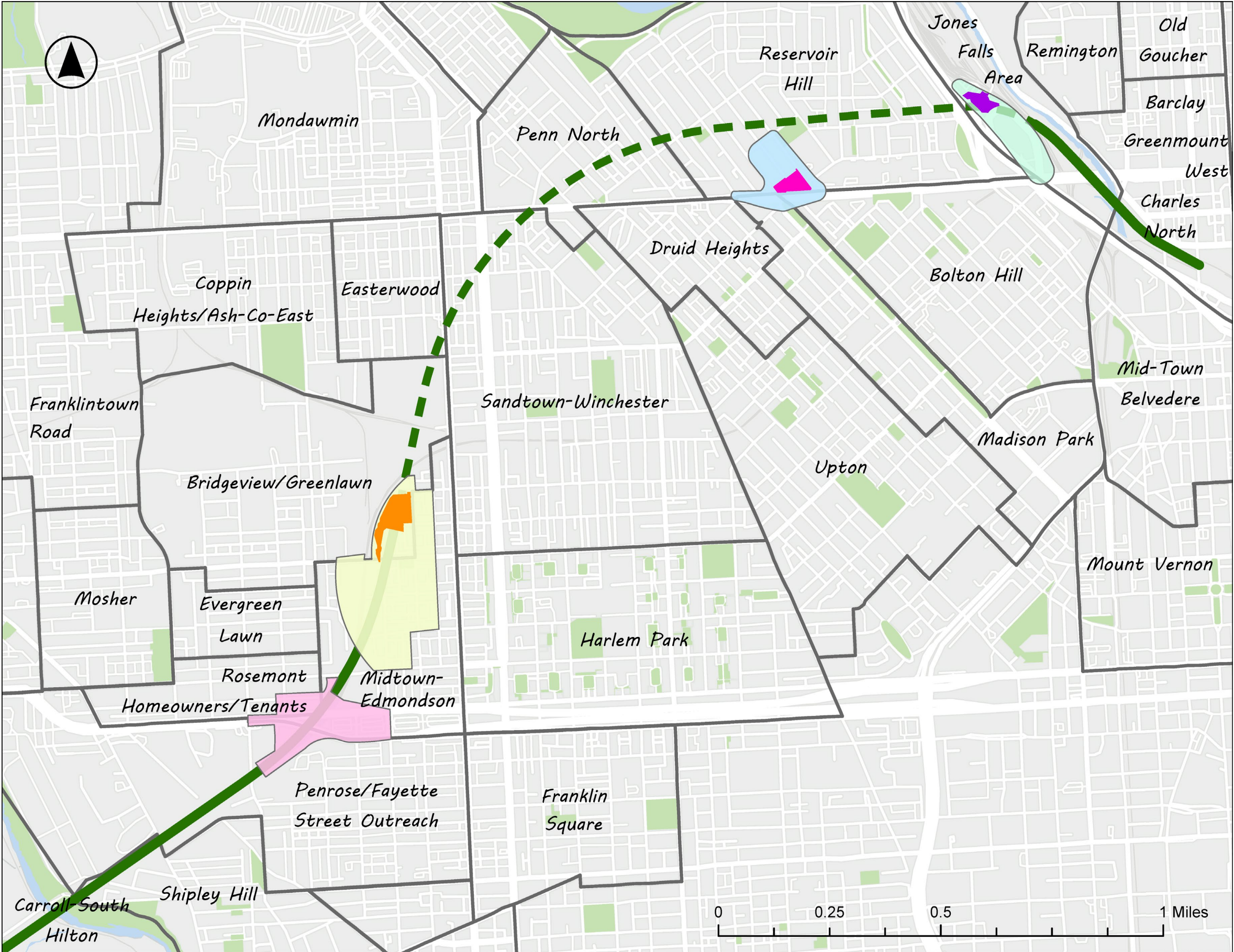
(Quarter provided for scale reference, device is 4 3/4")



# Construction Areas

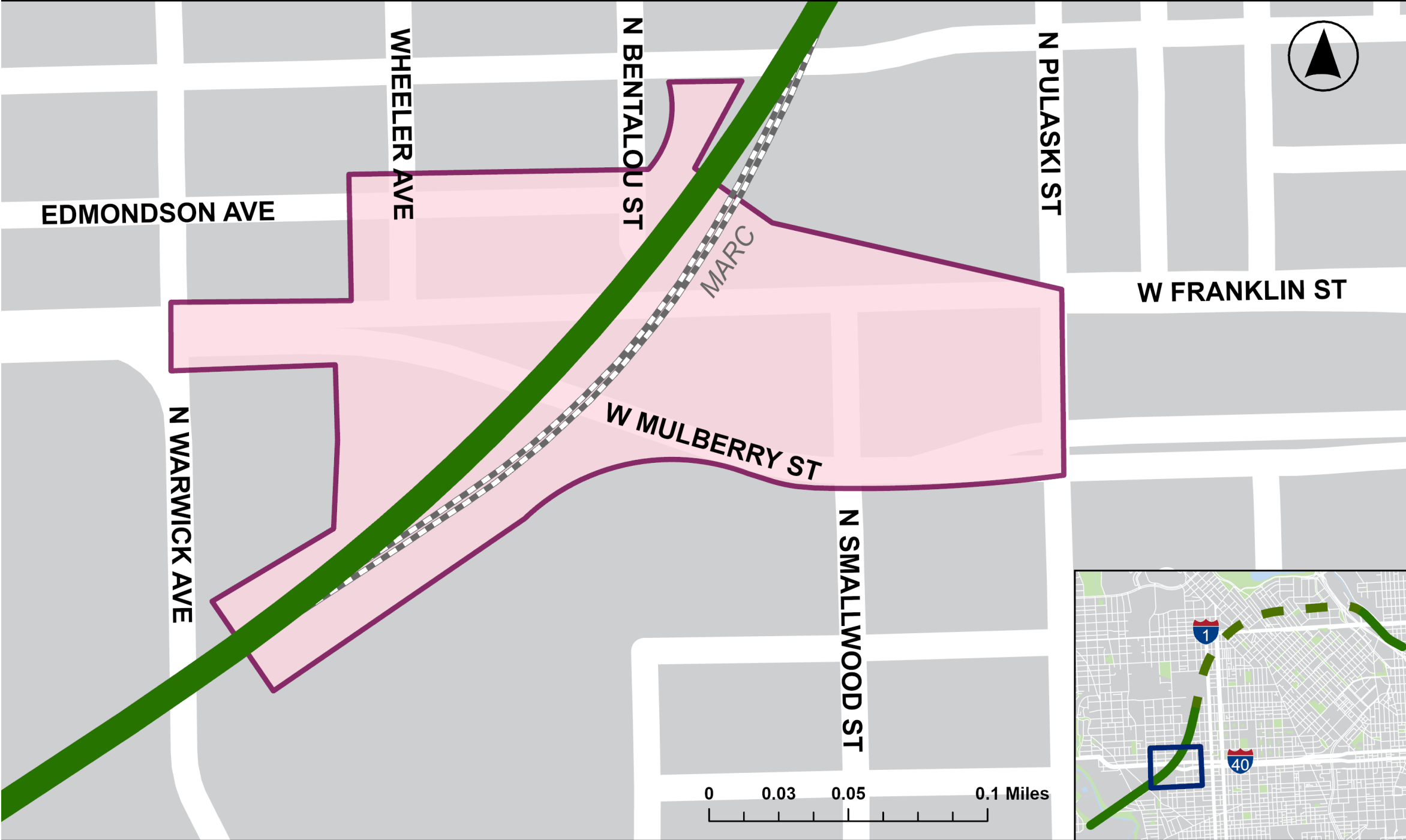


# Construction Overview Map





# Construction Area – W Mulberry Street



## LEGEND



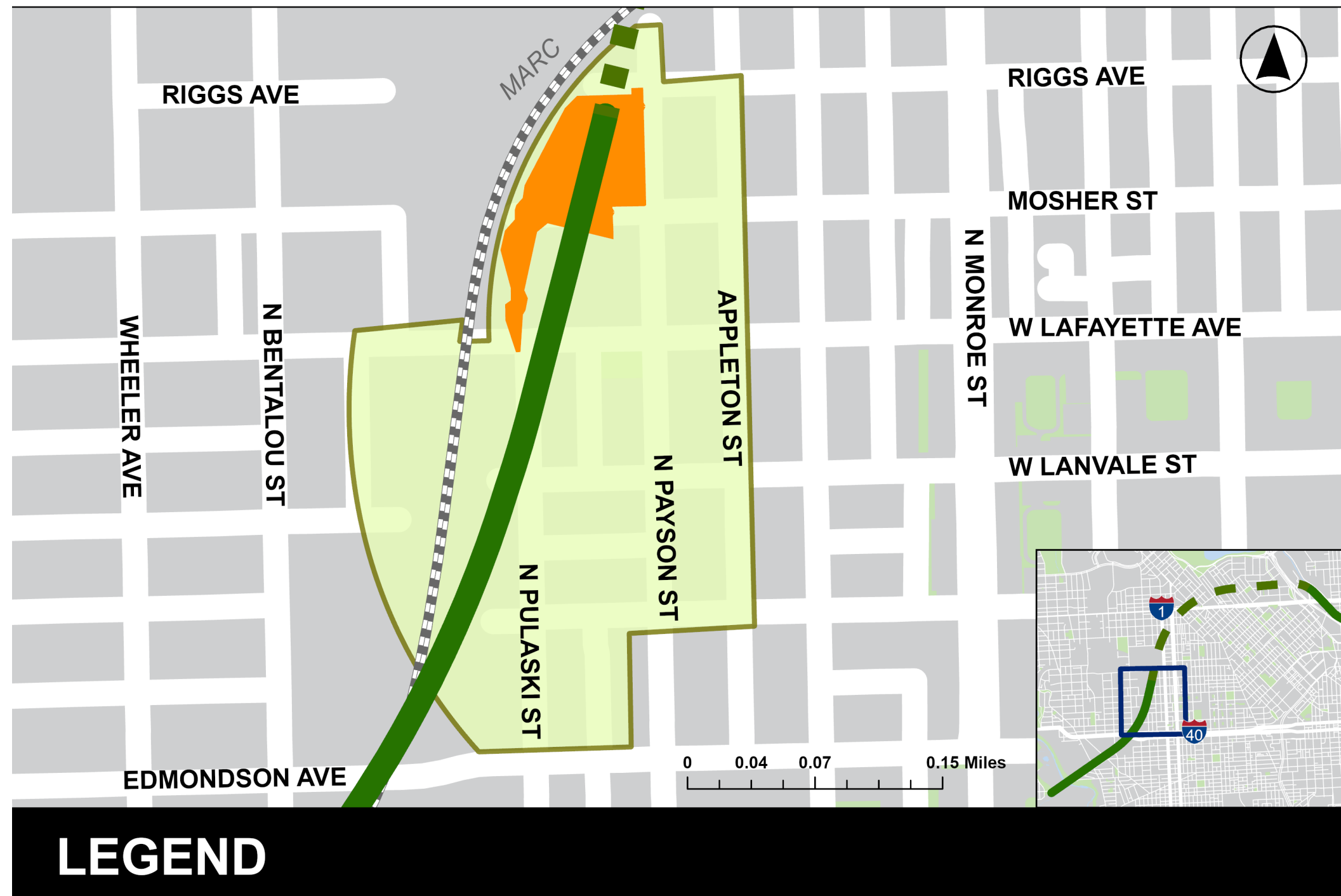
Project Site



Frederick Douglass Tunnel Route

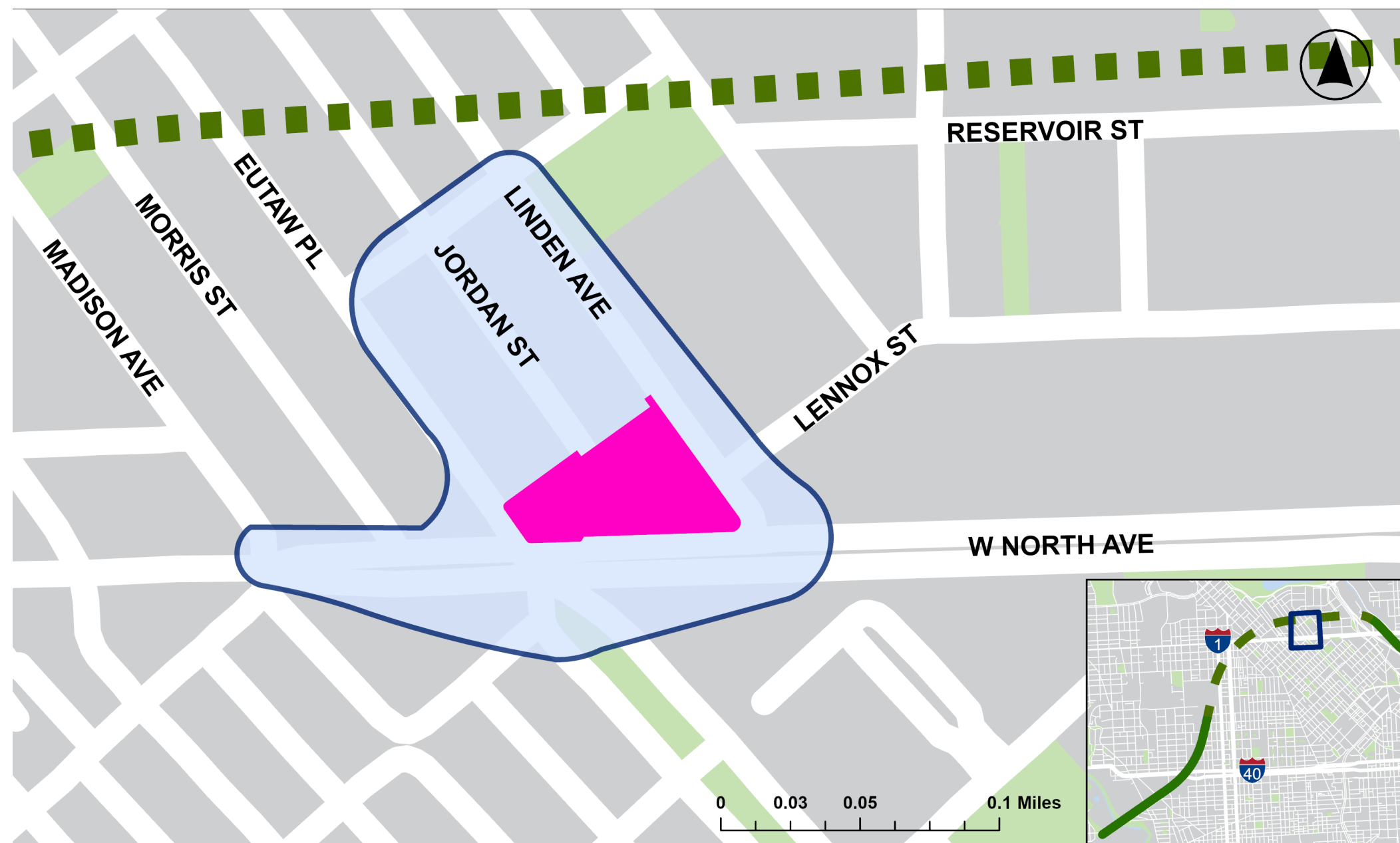


# Construction Area – South Approach





# Construction Area – Intermediate Ventilation Facility



## LEGEND



Project Site



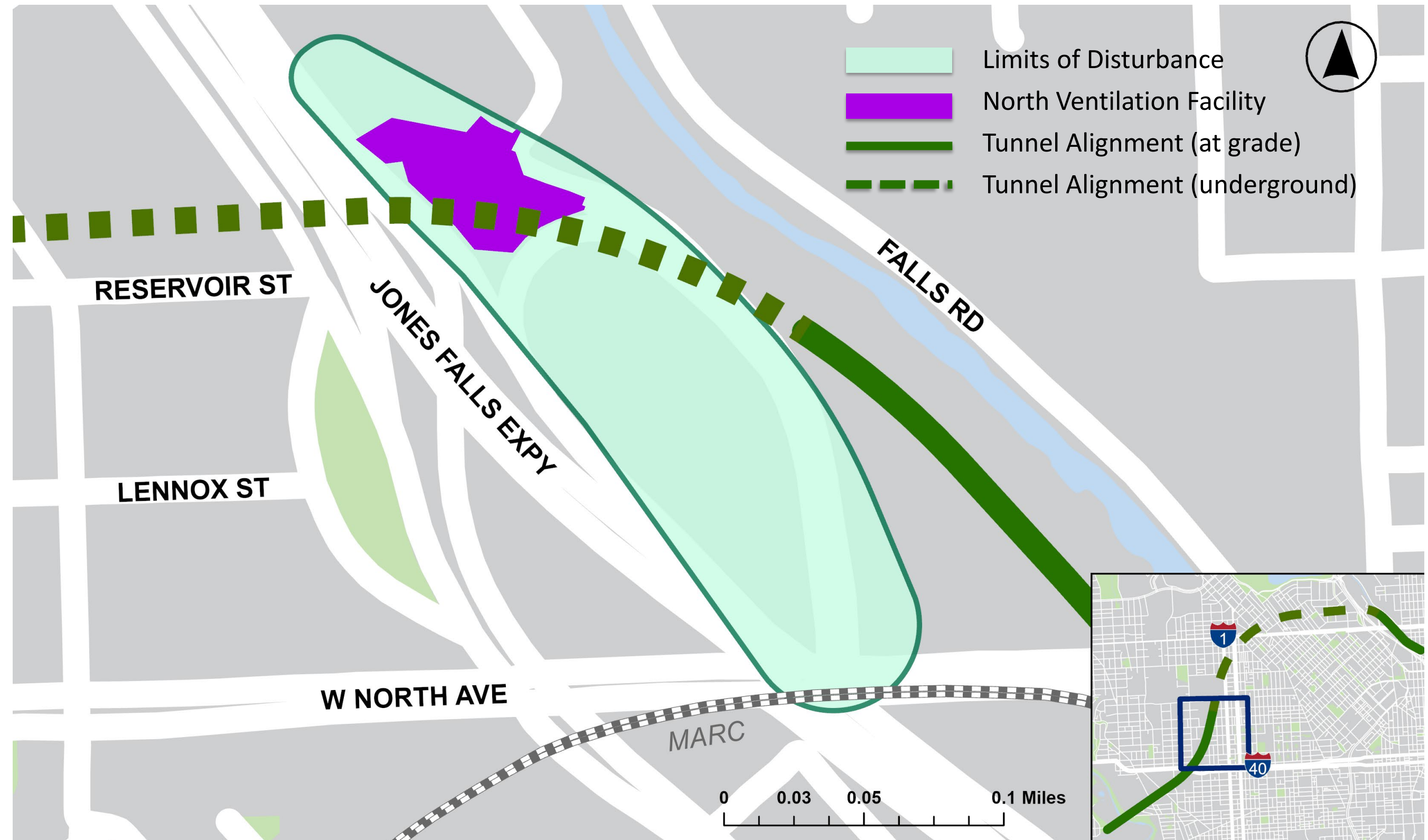
Vent Facility



Frederick Douglass Tunnel Route



# Construction Area – North Ventilation Facility





# What to Expect – Construction Mobilization



# CSW Field Crew Identification

- All CSW workers will be wearing required **Personal Protective Equipment (PPE)**
  - Safety hard hat with name on front
  - Class II Safety Vest
  - ANSI Rated Work Boots
- All CSW workers will have **worker IDs on them at all times**
  - Work areas will be secure
  - Workers will have to swipe into each construction area





# Construction Hours

## Typical Work Days / Hours

- 7 AM – 5 PM, Monday – Saturday

## Extended Hours

- Under work permit issued by Baltimore City
- Will be advertised at least 14 days prior to work

## Crew / Visitor / Other personnel parking

- Off-site parking / workers shuttled to sites
- First shuttle arrival time 6:15 AM
- Unload at CSW construction entrances



# Construction Equipment





# Erosion and Sediment Controls

## Best Practices

**We will place controls throughout work sites in accordance with approved plans from Maryland Department of the Environment**

- Silt Fence
- Inlet Protection
- Concrete Washout Structures

## MDE Compliance Tools

- Inspect and maintain all sediment control devices weekly
- Install additional erosion and/or sediment controls as required by Baltimore City Inspector
- Maintain and repair all existing controls as needed



# Subsurface Utility Investigations (SUI)

- CSW will perform utility investigations throughout the project lifecycle
- Utility Video Surveillance
  - Inspect utility conditions
  - Completed using inspection trucks
- Potholing/Test pitting
  - Locate subsurface utilities
  - Completed using air vacuum trucks





# Construction Notifications

- Place notices of work **5** business days before work on your street
- Install traffic signage **2** weeks before lane closure
- Notify travelers of roadway closures **2** weeks prior to closure
- Place no parking signs **3** days before parking restrictions begin





# Mitigation Strategies

## Noise and Emission Mitigation Strategies

- **Emissions:** In-field analysis to make sure within specification limits and mitigate as needed
- **Noise:** In-field analysis to make sure within specification limits and mitigate as needed

## Dust Mitigation Strategy

- Use of water trucks and other dust suppressions methods
- Woodchips, straw, tack coats, stone haul roads, etc

## Trash Receptacles and Restrooms

- On-site & maintained trash cans
- Worker Restrooms (zero tolerance policy for not using facilities)



# Upcoming Work



# MOT – Payson Street (Lane Closure)

## Anticipated Impacted Roads

- Payson St between Riggs Avenue and Lafayette Avenue

## Detour Timing

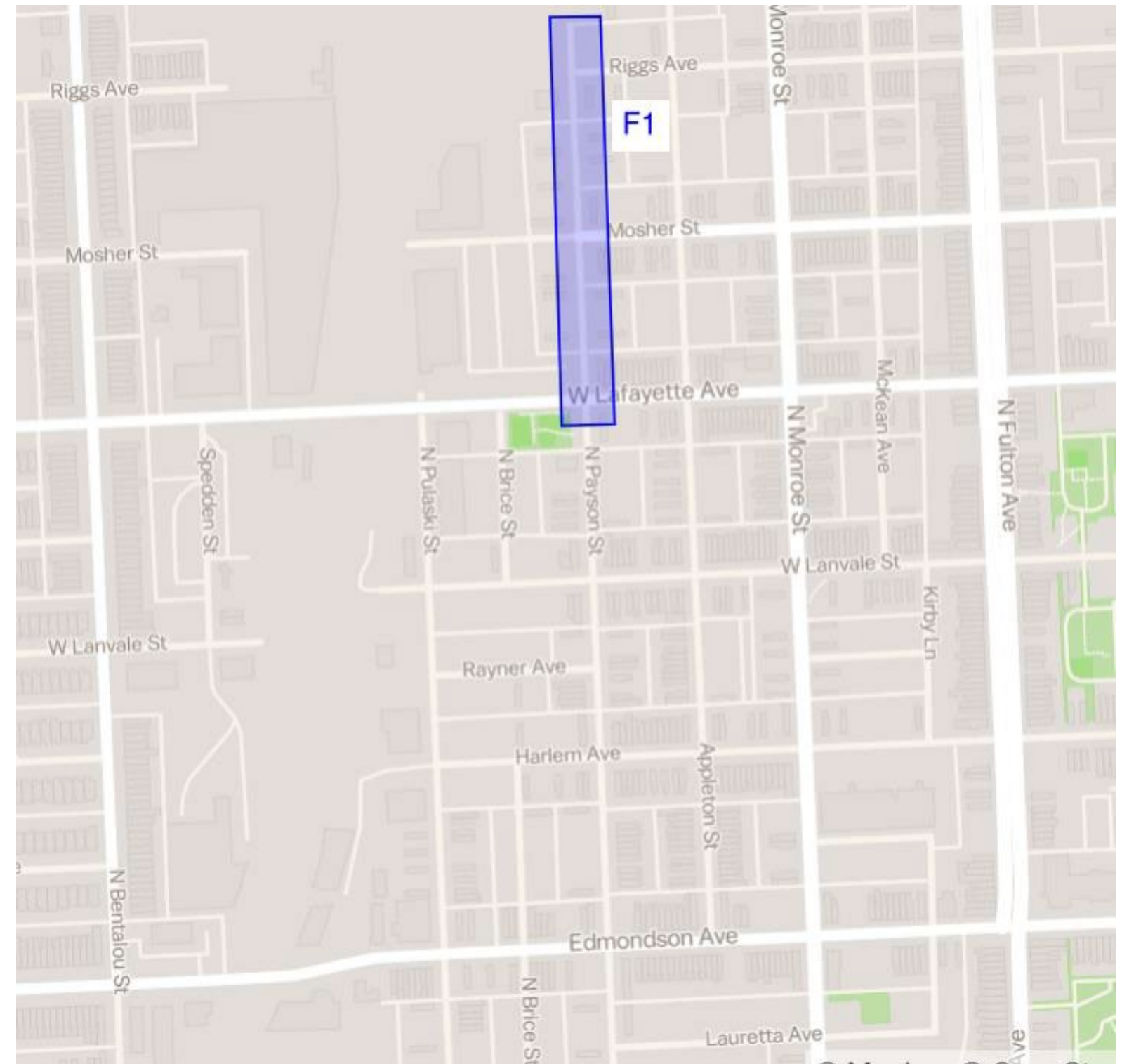
- Q3 2024 – Q3 2026

## Pedestrian / bicycle access

- Sidewalk detours
- Pedestrian and bicycle access will remain available

## Construction Activity

- Utility and roadway relocations





# MOT – Pulaski, Lanvale and Brice

## Anticipated Impacted Roads

- Pulaski Street, Lanvale Street, and Brice Street (between Lafayette Avenue and Edmondson Avenue)

## Detour Timing

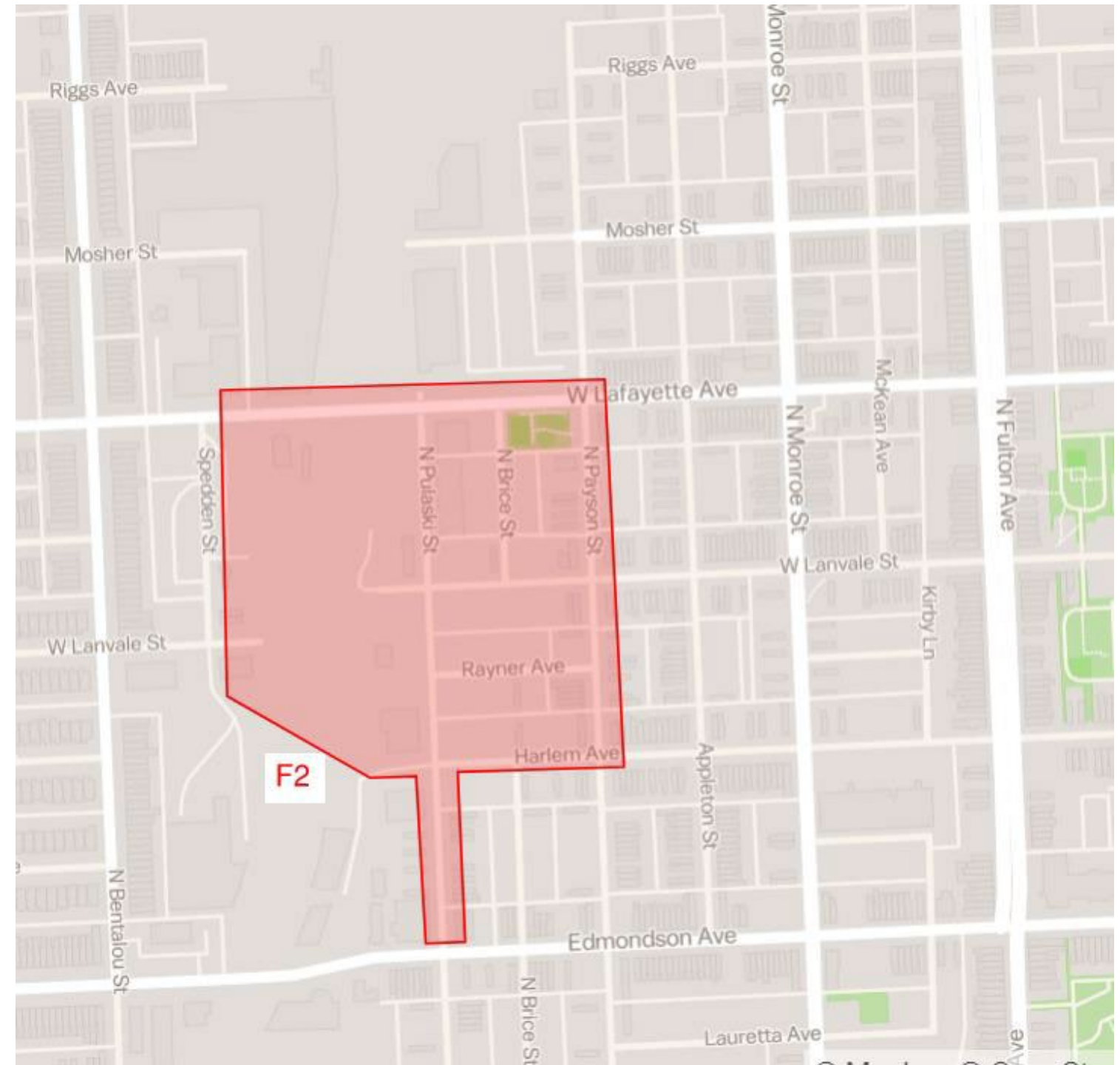
- Q3 2024 – Q3 2026

## Pedestrian / bicycle access

- Sidewalk detours
- Pedestrian and bicycle access will remain available

## Construction Activity

- Utility and roadway relocations





# MOT – W. Mulberry Street

## Anticipated Impacted Roads

- W. Mulberry Street between Warwick Ave and Smallwood St.

## Detour Timing

- Q1 2025 – Q3 2026

## Pedestrian / bicycle access

- Sidewalk detours
- Pedestrian and bicycle access will remain available

## Construction Activity

- Underground utility work





# Transit Impacts (MTA)

## MTA Service Impacts

### Bus stop 4433 on Line 77

(West Baltimore MARC – Catonsville) & CityLink Blue

- Will be moved after coordination with MTA

### Bus stop 10532 on Line 150

(Columbia – Downtown/Harbor East)

- Will be moved after coordination with MTA



# Construction Notifications



# Sign up for Construction Notifications

As construction ramps upon the Frederick Douglass Tunnel Program, there are various ways individuals can opt-in to receive updates from the Program team

- Join our email list
- Opt-in for text messaging
- Follow us on Social Media
  - Facebook
  - Instagram
  - LinkedIn



# Text Message Notification

Interested in getting text message notifications on tunnel construction? Opt-in by texting one of the following keywords to (833) 917-3749

- Text **FDTConstruct** – for **all** construction updates on the Program
- Text **FDTNorth** – for updates about work occurring north of North Avenue
- Text **FDTSouth** – for updates about work occurring south of North Avenue



# Stay Connected



[fdtunnel.com](https://fdtunnel.com)



[\(443\) 423-1115](tel:(443)423-1115)



[fdtunnel@amtrak.com](mailto:fdtunnel@amtrak.com)

## Follow us on Social Media



[@FDTunnel](https://www.instagram.com/FDTunnel)



[Frederick Douglass Tunnel Program](#)



Join our mailing list by scanning the QR Code





# Q & A