

<ul style="list-style-type: none">Track CenterlinesLimits of Surface DisturbanceBored TunnelProposed Vent Plant LocationArea of consideration for Vent Plant Location	<ul style="list-style-type: none">Proposed Bridge ReconstructionParcel BoundariesIndividually Registered or Eligible Historic ResourceContributing to Historic DistrictHistoric Districts	<ul style="list-style-type: none">Severe Residential Noise Impact ContourResidential Building DisplacementCommunity Facility DisplacementBusiness DisplacementPotential Vibration Impact Site for Further Evaluation	<ul style="list-style-type: none">NWI Wetlands100-Year FloodplainParksStreamsTree CoverCommunity Facilities	<div>B&P Tunnel Project Alternative 3A Page 1 of 7 1 inch = 200 feet</div> <div> 0 100 200 400 Feet</div>	<div>Page Index</div>	<div> B&P TUNNEL PROJECT</div> <div> U.S. Department of Transportation Federal Railroad Administration</div> <div> Maryland Department of Transportation</div>
---	---	--	--	--	-----------------------	---



<ul style="list-style-type: none">Track CenterlinesLimits of Surface DisturbanceBored TunnelProposed Vent Plant LocationArea of consideration for Vent Plant Location	<ul style="list-style-type: none">Proposed Bridge ReconstructionParcel BoundariesIndividually Registered or Eligible Historic ResourceContributing to Historic DistrictHistoric Districts	<ul style="list-style-type: none">Severe Residential Noise Impact ContourResidential Building DisplacementCommunity Facility DisplacementBusiness DisplacementPotential Vibration Impact Site for Further Evaluation	<ul style="list-style-type: none">NWI Wetlands100-Year FloodplainParksStreamsTree CoverCommunity Facilities
---	---	--	--

B&P Tunnel Project

Alternative 3A

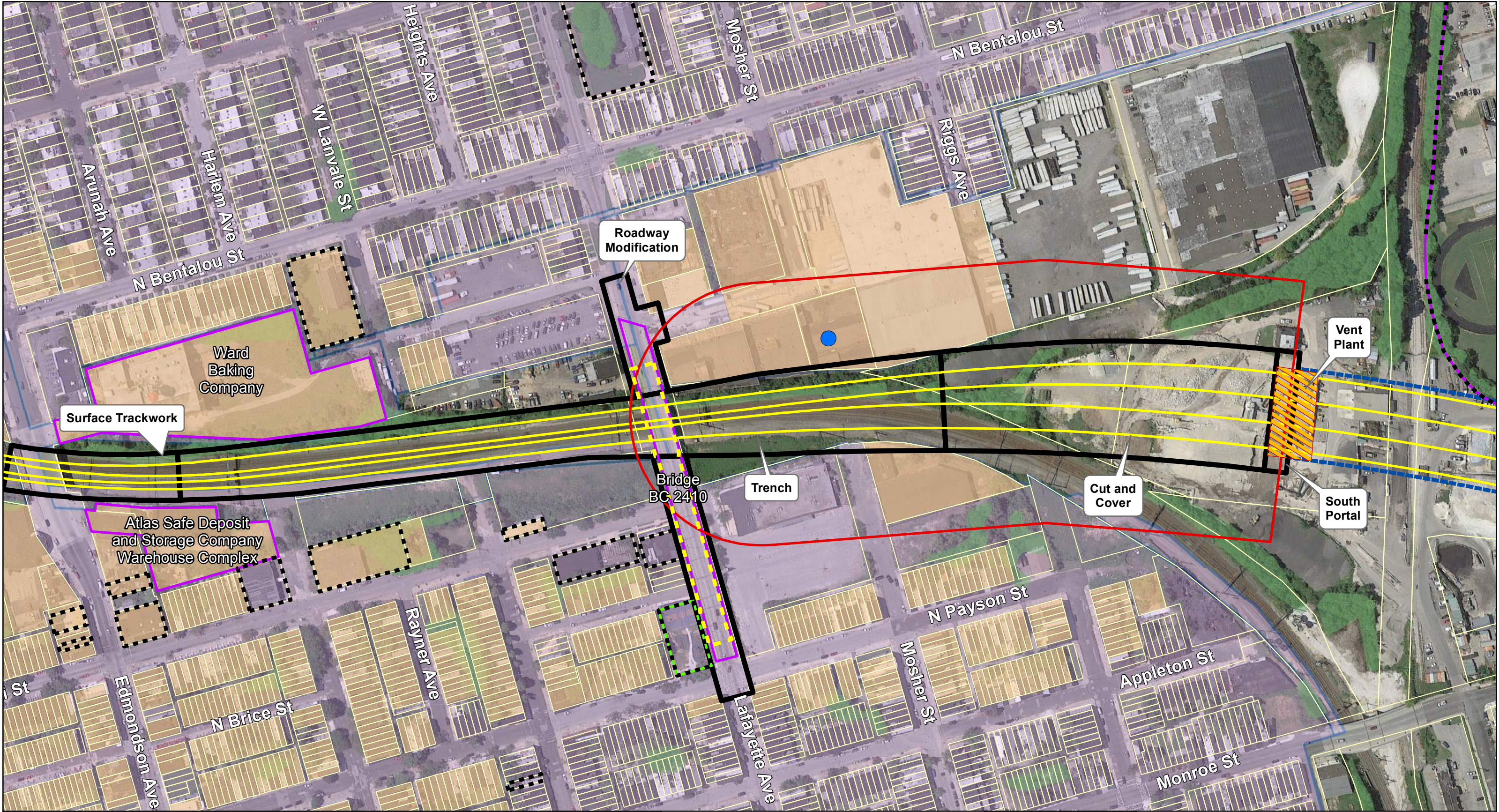
Page 2 of 7

1 inch = 200 feet

0 100 200 400 Feet

NORTH

Page Index



Track Centerlines

Limits of Surface Disturbance

Bored Tunnel

Proposed Vent Plant Location

Area of consideration for Vent Plant Location

Proposed Bridge Reconstruction

Parcel Boundaries

Individually Registered or Eligible Historic Resource

Contributing to Historic District

Historic Districts

Severe Residential Noise Impact Contour

Residential Building Displacement

Community Facility Displacement

Business Displacement

Potential Vibration Impact Site for Further Evaluation

NWI Wetlands

100-Year Floodplain

Parks

Streams

Tree Cover

Community Facilities

B&P Tunnel Project

Alternative 3A

Page 3 of 7

1 inch = 200 feet

0

100

200

400

Feet

NORTH

Page Index

1

2

3

4

5

6

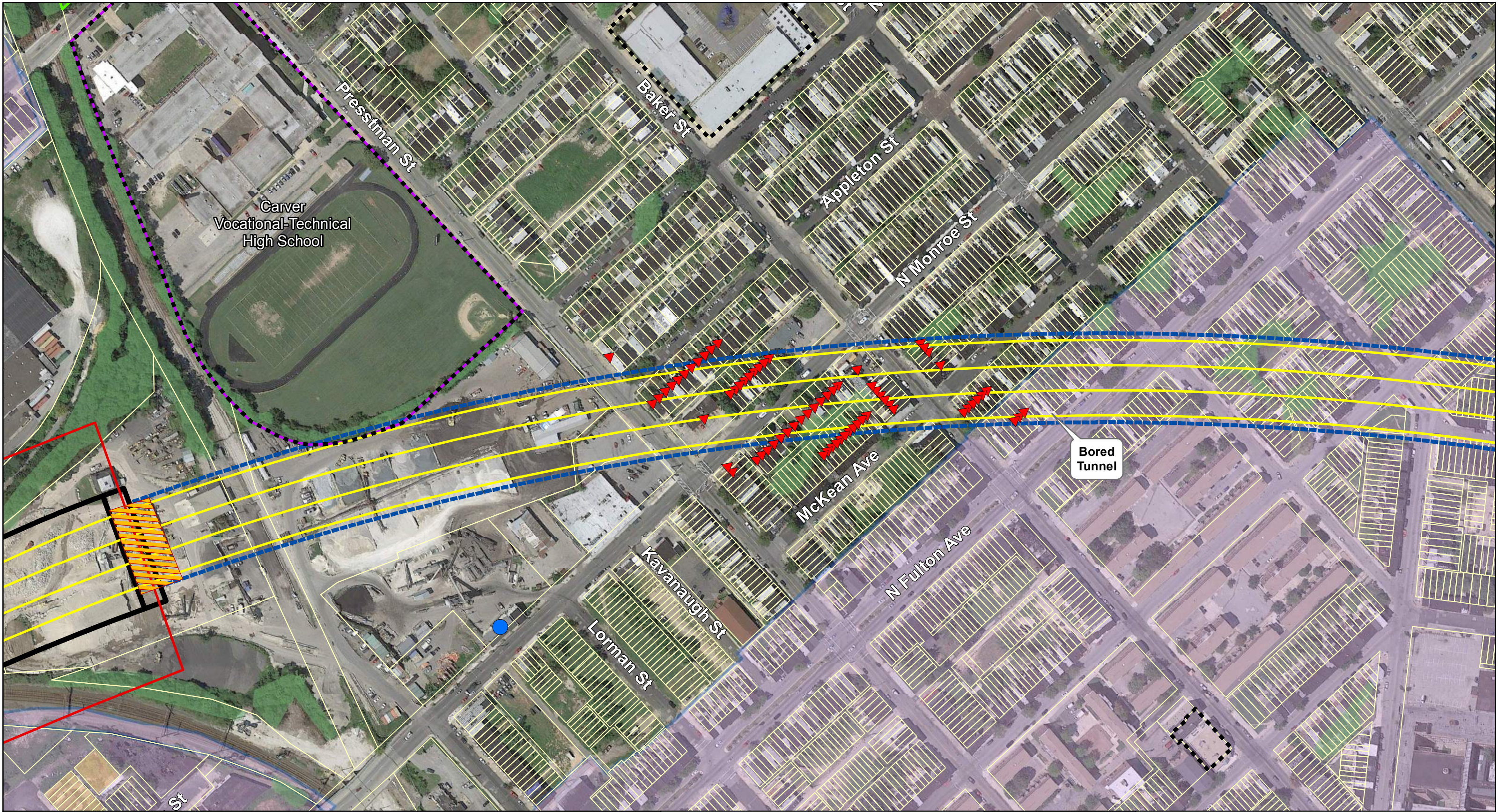
7

B&P TUNNEL PROJECT

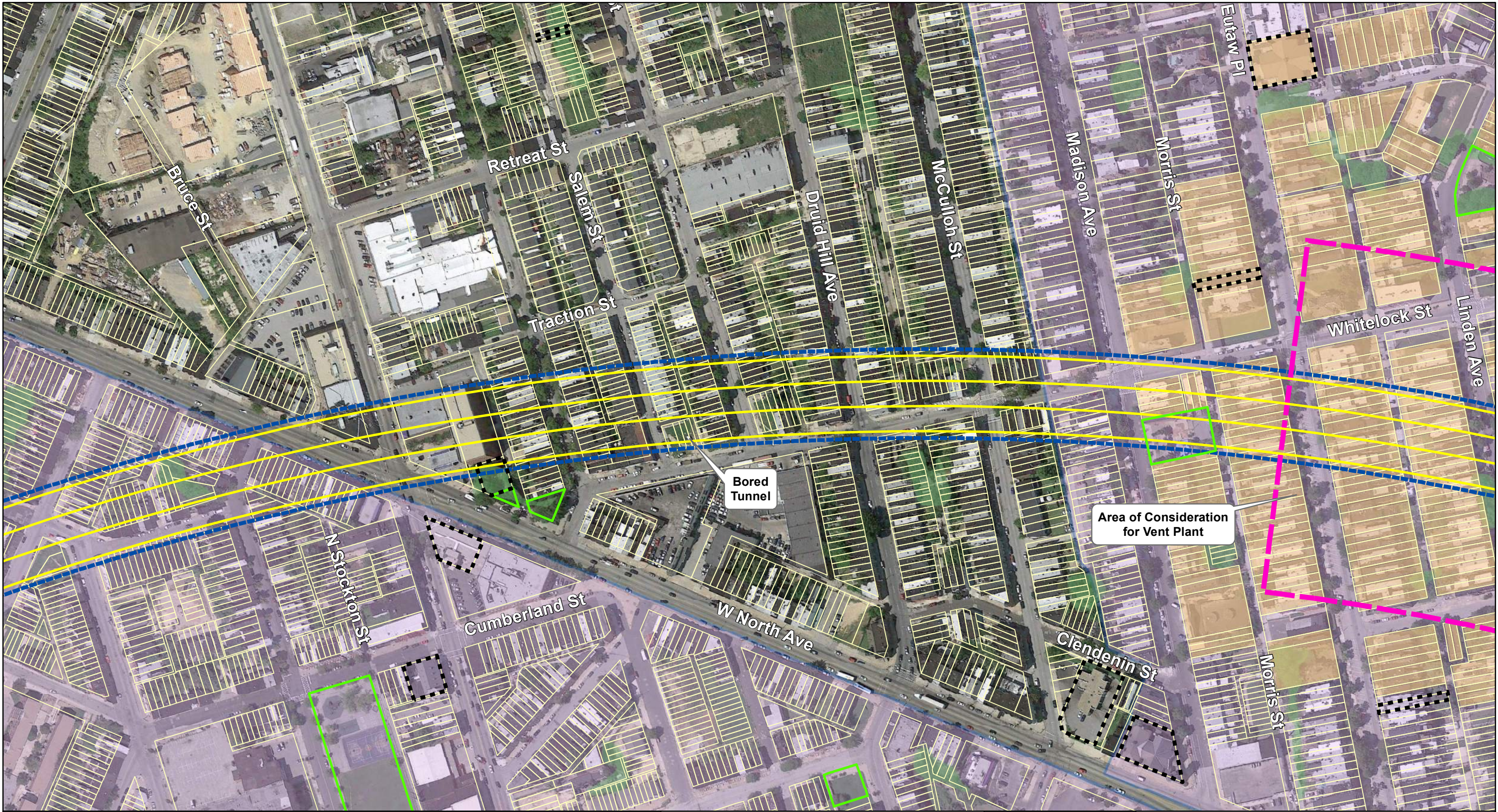
U.S. Department of Transportation

Federal Railroad Administration

Maryland Department of Transportation



<ul style="list-style-type: none">Track CenterlinesLimits of Surface DisturbanceBored TunnelProposed Vent Plant LocationArea of consideration for Vent Plant Location	<ul style="list-style-type: none">Proposed Bridge ReconstructionParcel BoundariesIndividually Registered or Eligible Historic ResourceContributing to Historic DistrictHistoric Districts	<ul style="list-style-type: none">Severe Residential Noise Impact ContourResidential Building DisplacementCommunity Facility DisplacementBusiness DisplacementPotential Vibration Impact Site for Further Evaluation	<ul style="list-style-type: none">NWI Wetlands100-Year FloodplainParksStreamsTree CoverCommunity Facilities	<p>B&P Tunnel Project</p> <p>Alternative 3A</p> <p>Page 4 of 7</p> <p>1 inch = 200 feet</p> <p>0 100 200 400 Feet</p> <p>NORTH</p>	<p>Page Index</p>	
---	---	--	--	--	-------------------	--



<ul style="list-style-type: none">Track CenterlinesLimits of Surface DisturbanceBored TunnelProposed Vent Plant LocationArea of consideration for Vent Plant Location	<ul style="list-style-type: none">Proposed Bridge ReconstructionParcel BoundariesIndividually Registered or Eligible Historic ResourceContributing to Historic DistrictHistoric Districts	<ul style="list-style-type: none">Severe Residential Noise Impact ContourResidential Building DisplacementCommunity Facility DisplacementBusiness DisplacementPotential Vibration Impact Site for Further Evaluation	<ul style="list-style-type: none">NWI Wetlands100-Year FloodplainParksStreamsTree CoverCommunity Facilities
---	---	--	--

B&P Tunnel Project

Alternative 3A

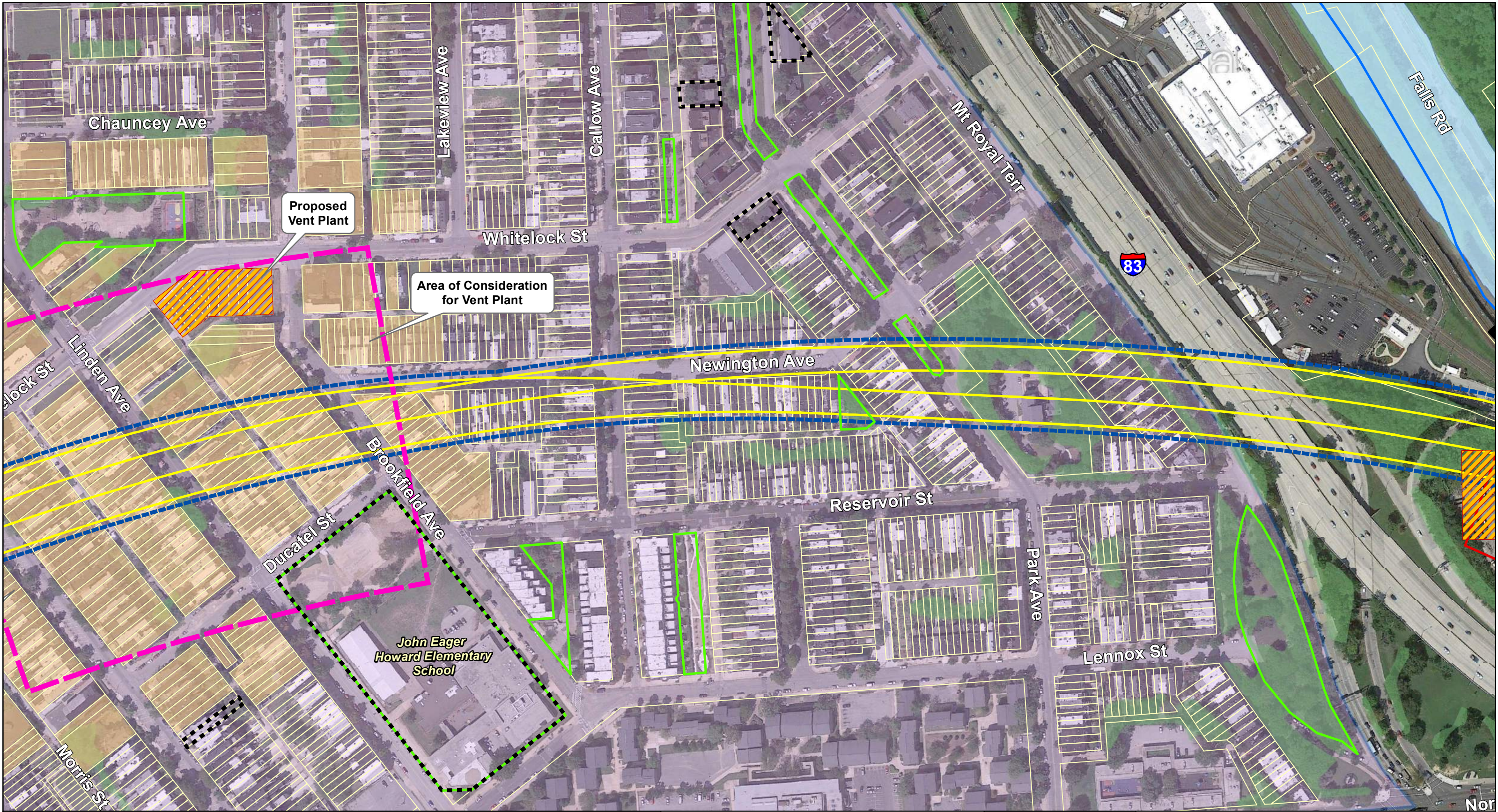
Page 5 of 7

1 inch = 200 feet

0 100 200 400 Feet

NORTH

Page Index



<ul style="list-style-type: none">Track CenterlinesLimits of Surface DisturbanceBored TunnelProposed Vent Plant LocationArea of consideration for Vent Plant Location	<ul style="list-style-type: none">Proposed Bridge ReconstructionParcel BoundariesIndividually Registered or Eligible Historic ResourceContributing to Historic DistrictHistoric Districts	<ul style="list-style-type: none">Severe Residential Noise Impact ContourResidential Building DisplacementCommunity Facility DisplacementBusiness DisplacementPotential Vibration Impact Site for Further Evaluation	<ul style="list-style-type: none">NWI Wetlands100-Year FloodplainParksStreamsTree CoverCommunity Facilities
---	---	--	--

B&P Tunnel Project

Alternative 3A

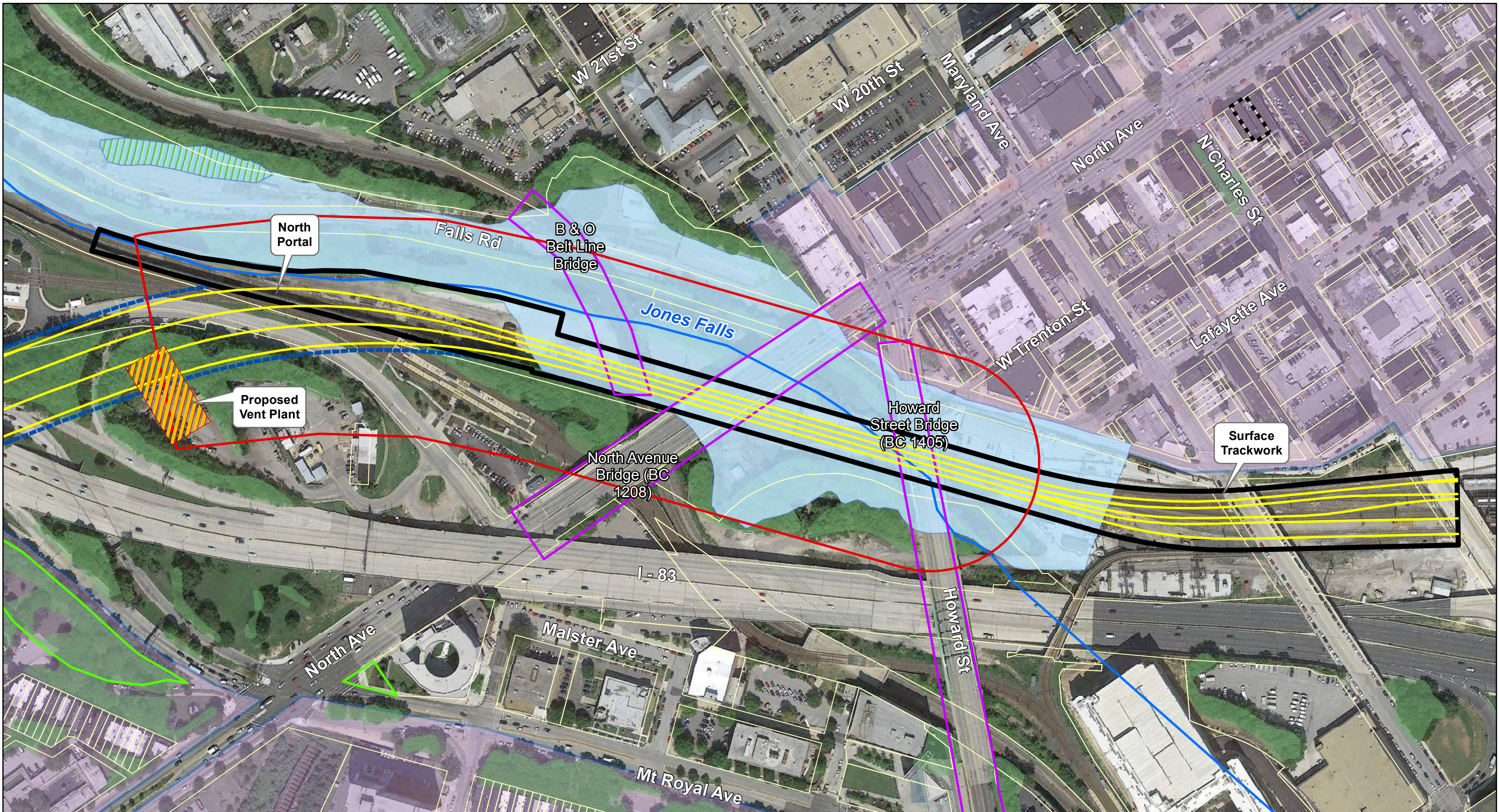
Page 6 of 7

1 inch = 200 feet

0 100 200 400 Feet

NORTH

Page Index

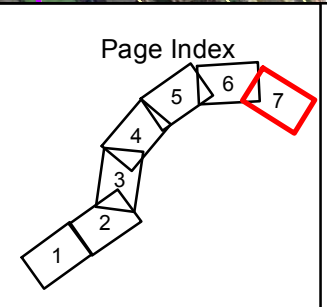


Track Centerlines	Proposed Bridge Reconstruction	Severe Residential Noise Impact Contour	NWI Wetlands
Limits of Surface Disturbance	Parcel Boundaries	Residential Building Displacement	100-Year Floodplain
Bored Tunnel	Individually Registered or Eligible Historic Resource	Community Facility Displacement	Parks
Proposed Vent Plant Location	Contributing to Historic District	Business Displacement	Tree Cover
Area of consideration for Vent Plant Location	Historic Districts	Potential Vibration Impact Site for Further Evaluation	Community Facilities

B&P Tunnel Project
Alternative 3A
Page 7 of 7
1 inch = 200 feet

NORTH

0 100 200 400 Feet



B&P TUNNEL PROJECT

U.S. Department of Transportation
Federal Railroad Administration

Maryland Department of Transportation