

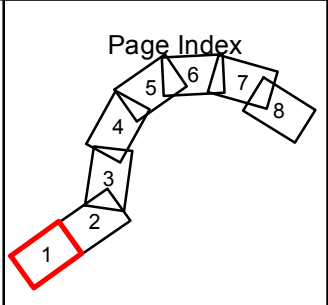
Track Centerlines	Proposed Bridge Reconstruction	Severe Residential Noise Impact Contour	NWI Wetlands
Limits of Surface Disturbance	Parcel Boundaries	Business Displacement	100-Year Floodplain
Bored Tunnel	Individually Registered or Eligible Historic Resource	Residential Building Displacement	Parks
Proposed Vent Plant Location	Contributing to Historic District	Community Facility Displacement	Streams
Area of consideration for Vent Plant Location	Historic Districts	Potential Vibration Impact Site for Further Evaluation	Tree Cover
			Community Facilities

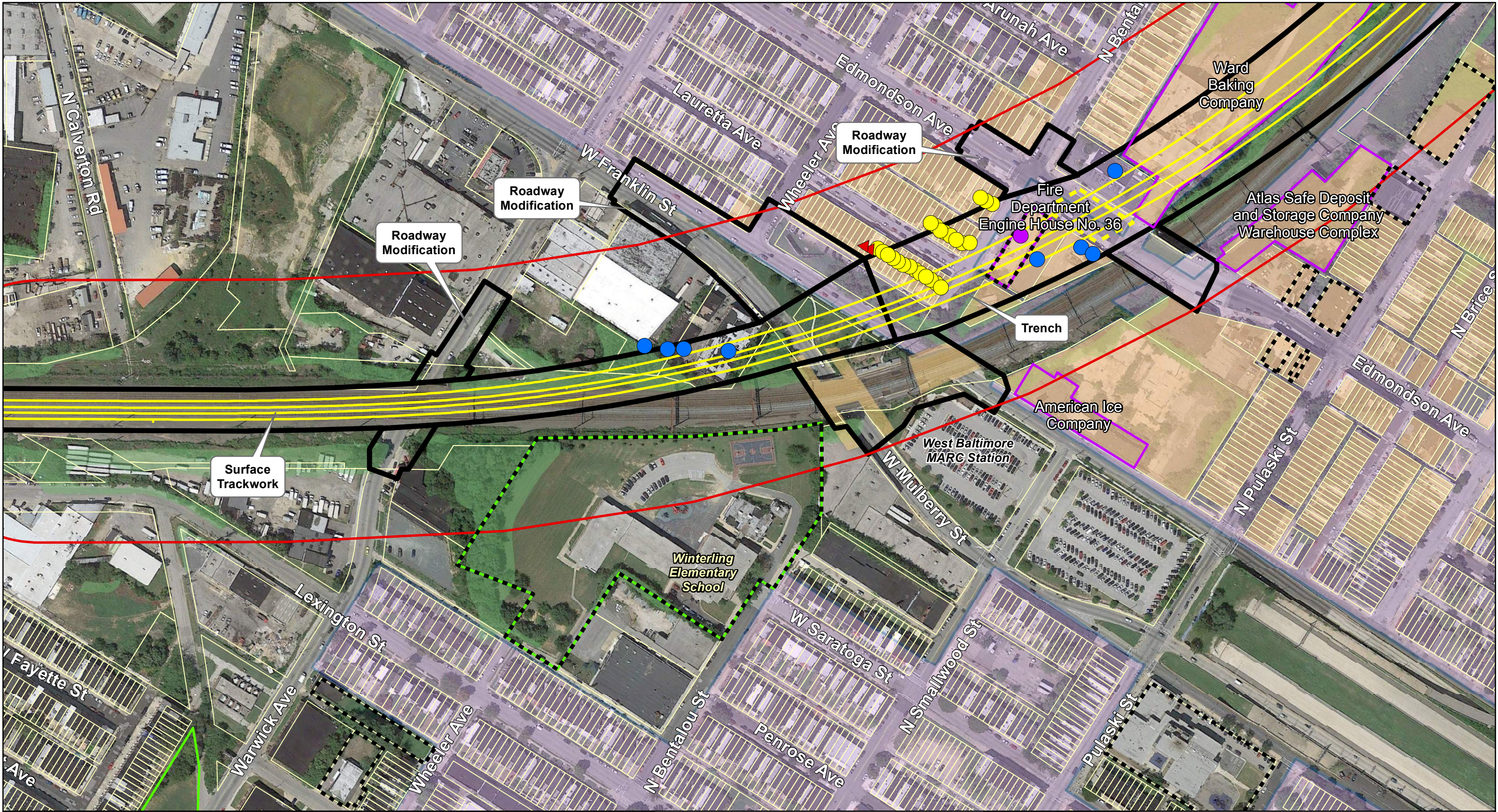
**B&P Tunnel Project
Alternative 3C
Page 1 of 8**

1 inch = 200 feet

0 100 200 400 Feet

NORTH



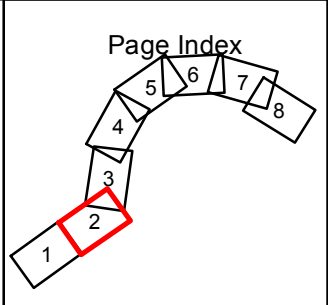


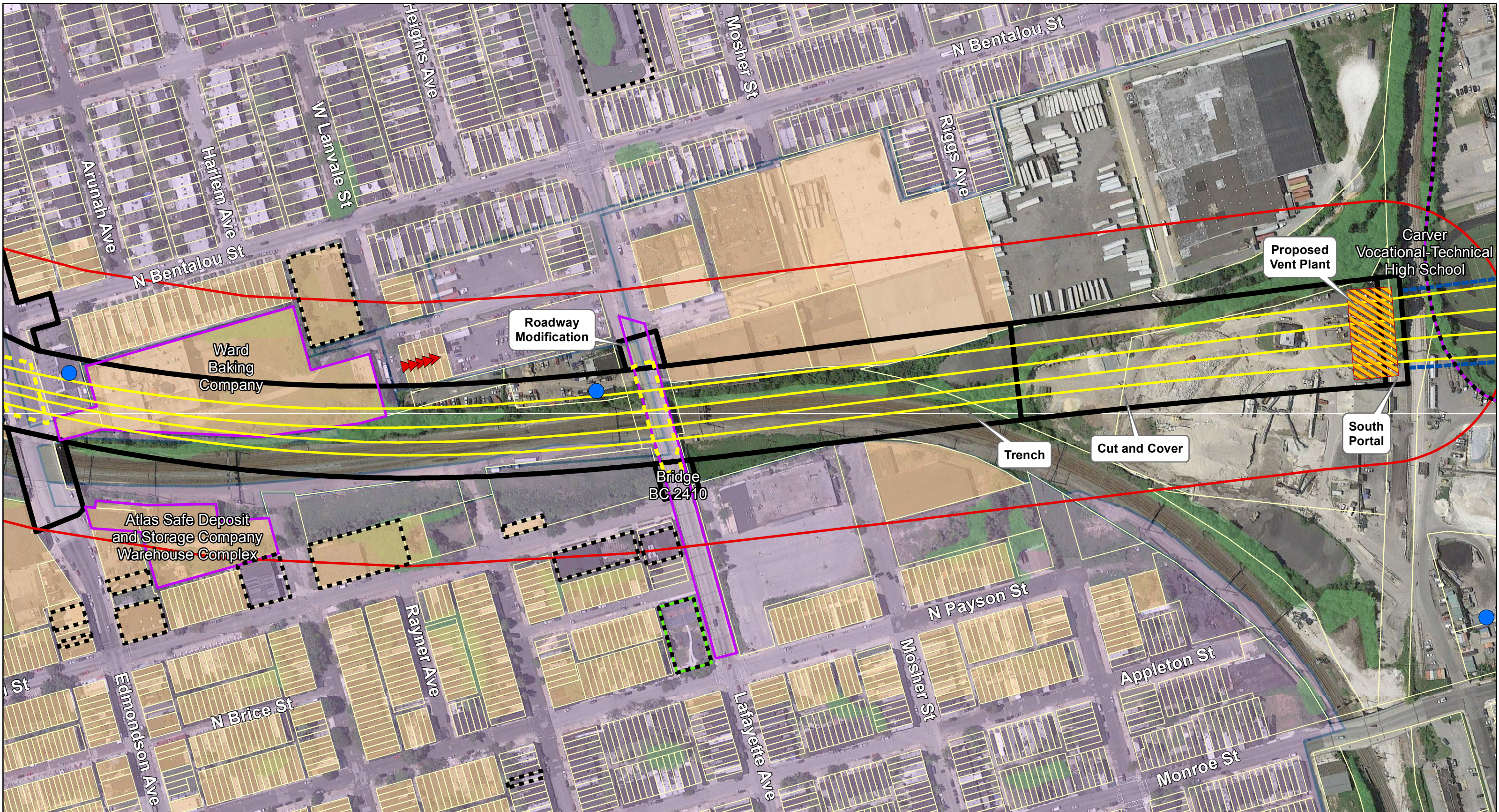
Track Centerlines	Proposed Bridge Reconstruction	Severe Residential Noise Impact Contour	NWI Wetlands
Limits of Surface Disturbance	Parcel Boundaries	Business Displacement	100-Year Floodplain
Bored Tunnel	Individually Registered or Eligible Historic Resource	Residential Building Displacement	Parks
Proposed Vent Plant Location	Contributing to Historic District	Community Facility Displacement	Tree Cover
Area of consideration for Vent Plant Location	Historic Districts	Potential Vibration Impact Site for Further Evaluation	Community Facilities

**B&P Tunnel Project
Alternative 3C
Page 2 of 8**

1 inch = 200 feet

0 100 200 400 Feet





Track Centerlines

Limits of Surface Disturbance

Bored Tunnel

Proposed Vent Plant Location

Area of consideration for Vent Plant Location

Proposed Bridge Reconstruction

Parcel Boundaries

Individually Registered or Eligible Historic Resource

Contributing to Historic District

Historic Districts

Severe Residential Noise Impact Contour

Business Displacement

Residential Building Displacement

Community Facility Displacement

Potential Vibration Impact Site for Further Evaluation

NWI Wetlands

100-Year Floodplain

Parks

Streams

Tree Cover

Community Facilities

NORTH

0

100

200

400

Feet

1

2

3

4

5

6

7

8

Page Index

B&P TUNNEL PROJECT

U.S. Department of Transportation
Federal Railroad Administration

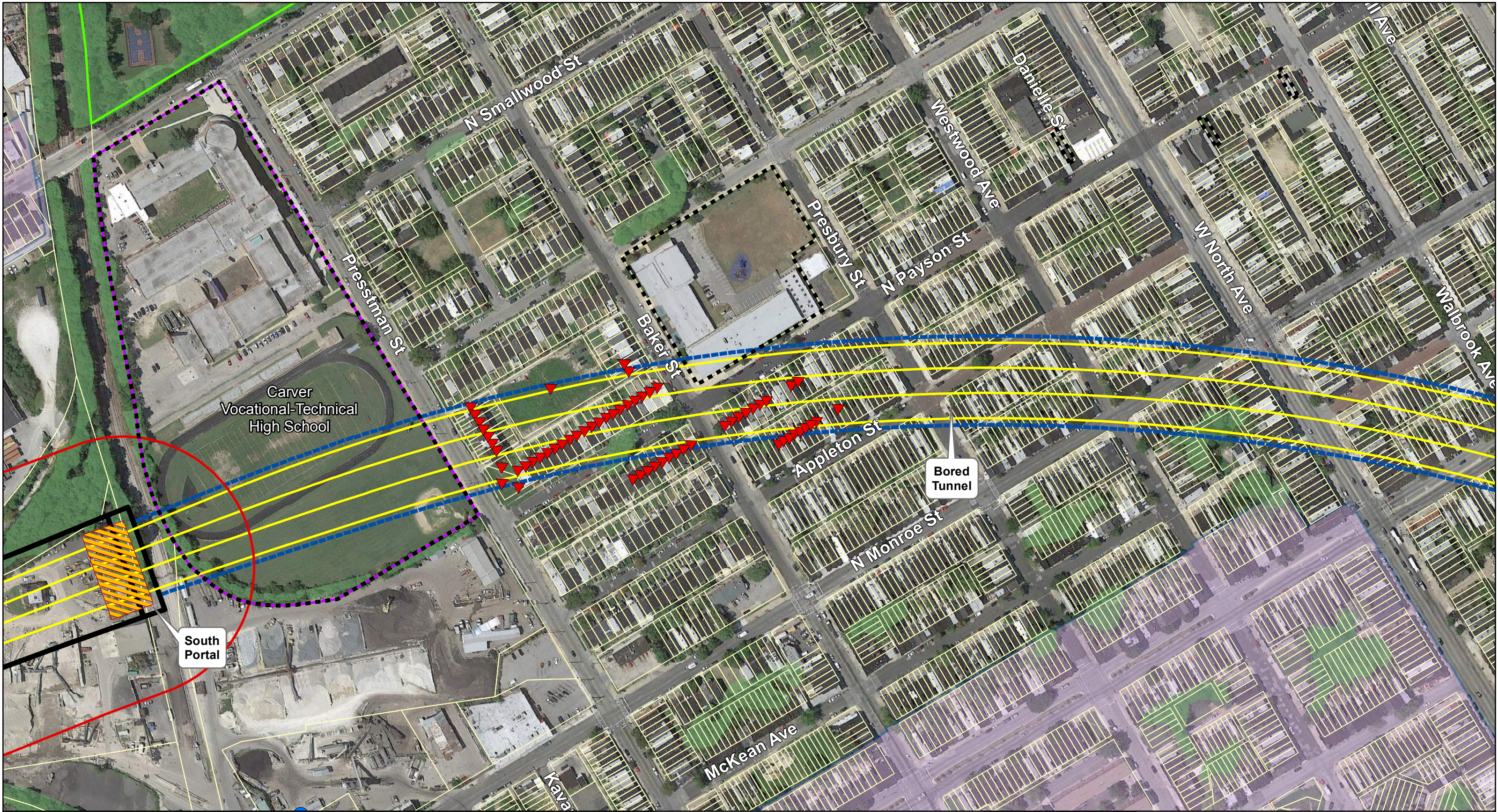
Maryland Department of Transportation

B&P Tunnel Project

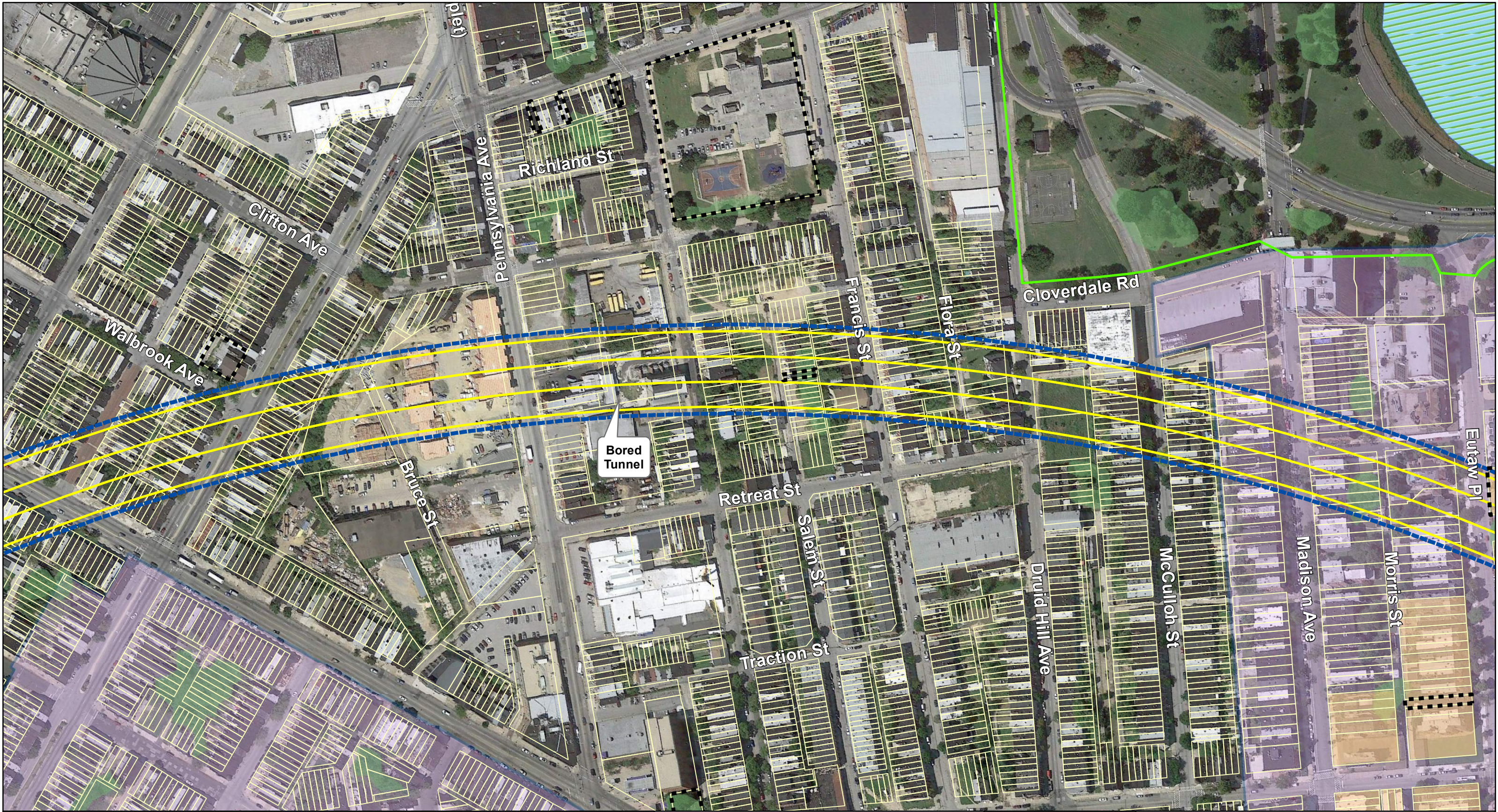
Alternative 3C

Page 3 of 8

1 inch = 200 feet



<ul style="list-style-type: none">Track CenterlinesLimits of Surface DisturbanceBored TunnelProposed Vent Plant LocationArea of consideration for Vent Plant Location	<ul style="list-style-type: none">Proposed Bridge ReconstructionParcel BoundariesIndividually Registered or Eligible Historic ResourceContributing to Historic DistrictHistoric Districts	<ul style="list-style-type: none">Severe Residential Noise Impact ContourBusiness DisplacementResidential Building DisplacementCommunity Facility DisplacementPotential Vibration Impact Site for Further Evaluation	<ul style="list-style-type: none">NWI Wetlands100-Year FloodplainParksStreamsTree CoverCommunity Facilities	<p>B&P Tunnel Project Alternative 3C Page 4 of 8</p> <p>1 inch = 200 feet</p> <p>0 100 200 400 Feet</p> <p>NORTH</p>	<p>Page Index</p>	
---	---	--	--	--	-------------------	--

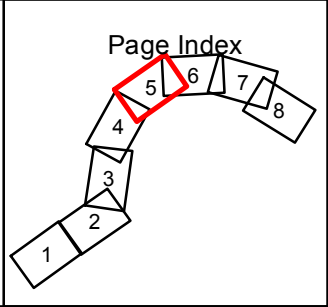


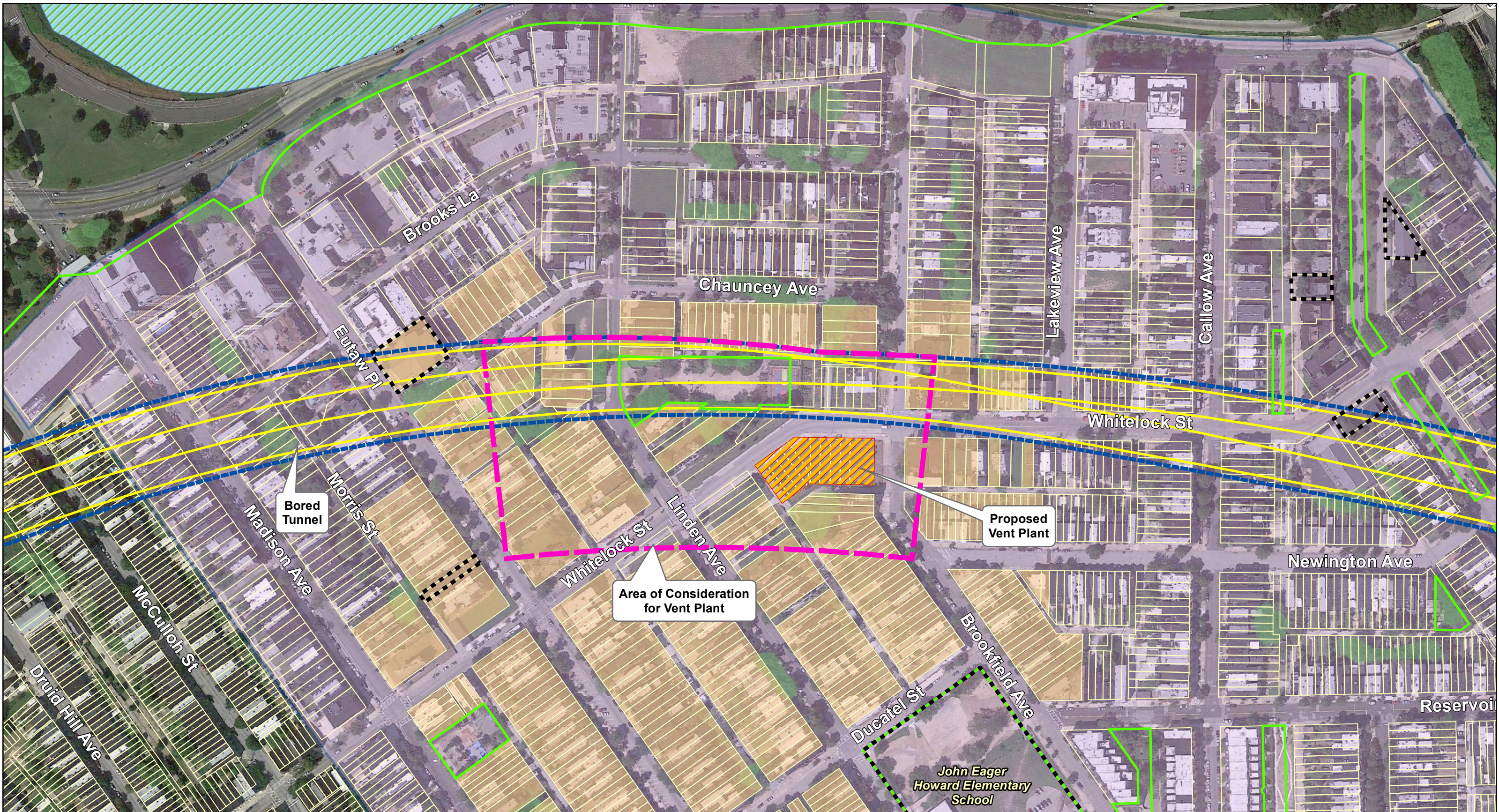
Track Centerlines	Proposed Bridge Reconstruction	Severe Residential Noise Impact Contour	NWI Wetlands
Limits of Surface Disturbance	Parcel Boundaries	Business Displacement	100-Year Floodplain
Bored Tunnel	Individually Registered or Eligible Historic Resource	Residential Building Displacement	Parks
Proposed Vent Plant Location	Contributing to Historic District	Community Facility Displacement	Streams
Area of consideration for Vent Plant Location	Historic Districts	Potential Vibration Impact Site for Further Evaluation	Tree Cover
			Community Facilities

**B&P Tunnel Project
Alternative 3C
Page 5 of 8**

1 inch = 200 feet

0 100 200 400 Feet





<ul style="list-style-type: none">Track CenterlinesLimits of Surface DisturbanceBored TunnelProposed Vent Plant LocationArea of consideration for Vent Plant Location	<ul style="list-style-type: none">Proposed Bridge ReconstructionParcel BoundariesIndividually Registered or Eligible Historic ResourceContributing to Historic DistrictHistoric Districts	<ul style="list-style-type: none">Severe Residential Noise Impact ContourBusiness DisplacementResidential Building DisplacementCommunity Facility DisplacementPotential Vibration Impact Site for Further Evaluation	<ul style="list-style-type: none">NWI Wetlands100-Year FloodplainParksStreamsTree CoverCommunity Facilities
---	---	--	--

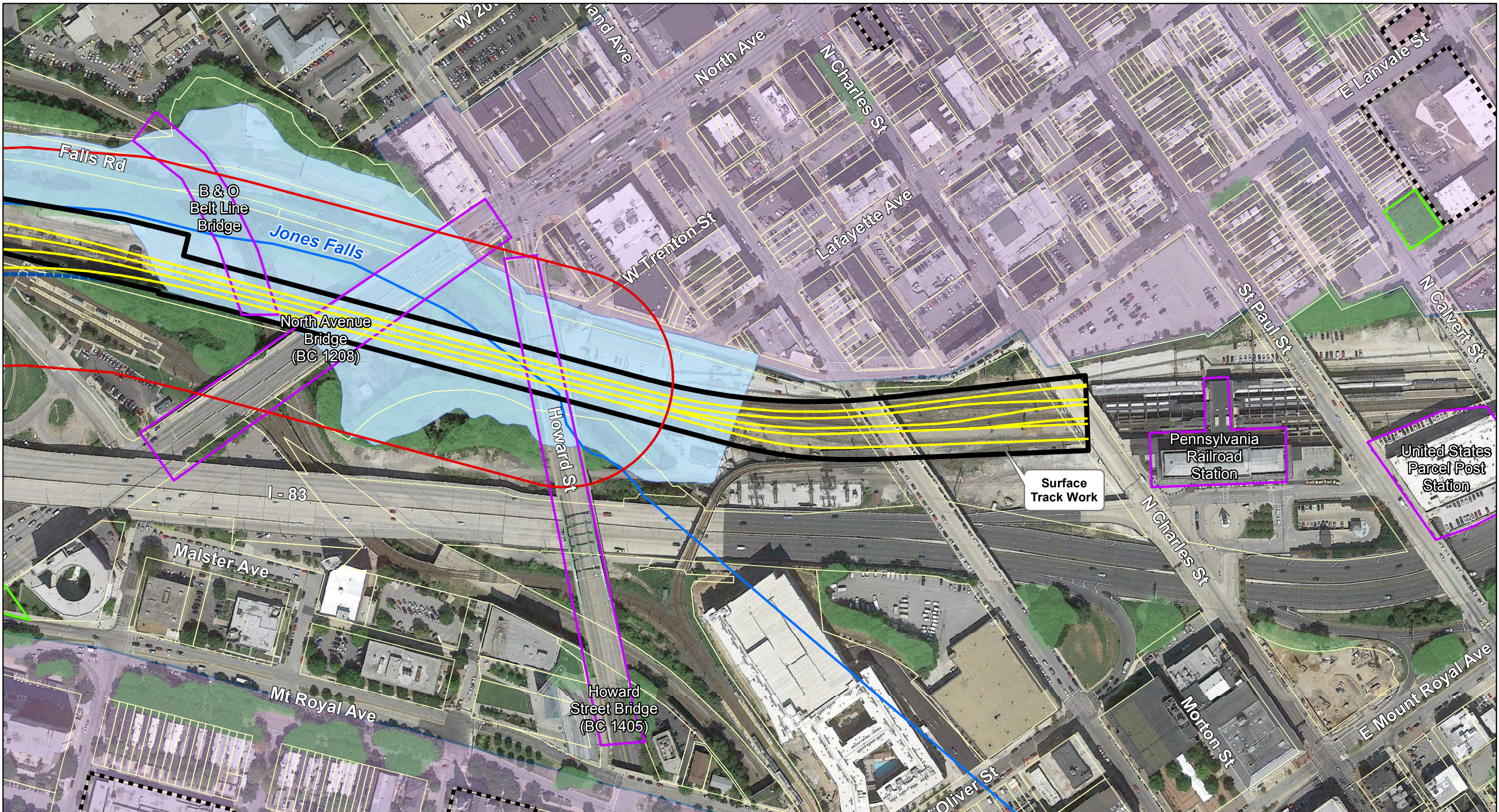
**B&P Tunnel Project
Alternative 3C
Page 6 of 8**

1 inch = 200 feet

0 100 200 400 Feet

NORTH

Page Index



Track Centerlines	Proposed Bridge Reconstruction	Severe Residential Noise Impact Contour	NWI Wetlands
Limits of Surface Disturbance	Parcel Boundaries	Business Displacement	100-Year Floodplain
Bored Tunnel	Individually Registered or Eligible Historic Resource	Residential Building Displacement	Parks
Proposed Vent Plant Location	Contributing to Historic District	Community Facility Displacement	Streams
Area of consideration for Vent Plant Location	Historic Districts	Potential Vibration Impact Site for Further Evaluation	Tree Cover
			Community Facilities

**B&P Tunnel Project
Alternative 3C
Page 8 of 8**

NORTH

1 inch = 200 feet

0 100 200 400 Feet

