

<ul style="list-style-type: none">Track CenterlinesLimits of Surface DisturbanceBored TunnelProposed Vent Plant LocationArea of consideration for Vent Plant Location	<ul style="list-style-type: none">Proposed Bridge ReconstructionParcel BoundariesIndividually Registered or Eligible Historic ResourceContributing to Historic DistrictHistoric Districts	<ul style="list-style-type: none">Severe Residential Noise Impact ContourResidential Building DisplacementCommunity Facility DisplacementBusiness DisplacementPotential Vibration Impact Site for Further Assessment	<ul style="list-style-type: none">NWI Wetlands100-Year FloodplainParksStreamsTree CoverCommunity Facilities
---	---	--	--

B&P Tunnel Project

Alternative 3B

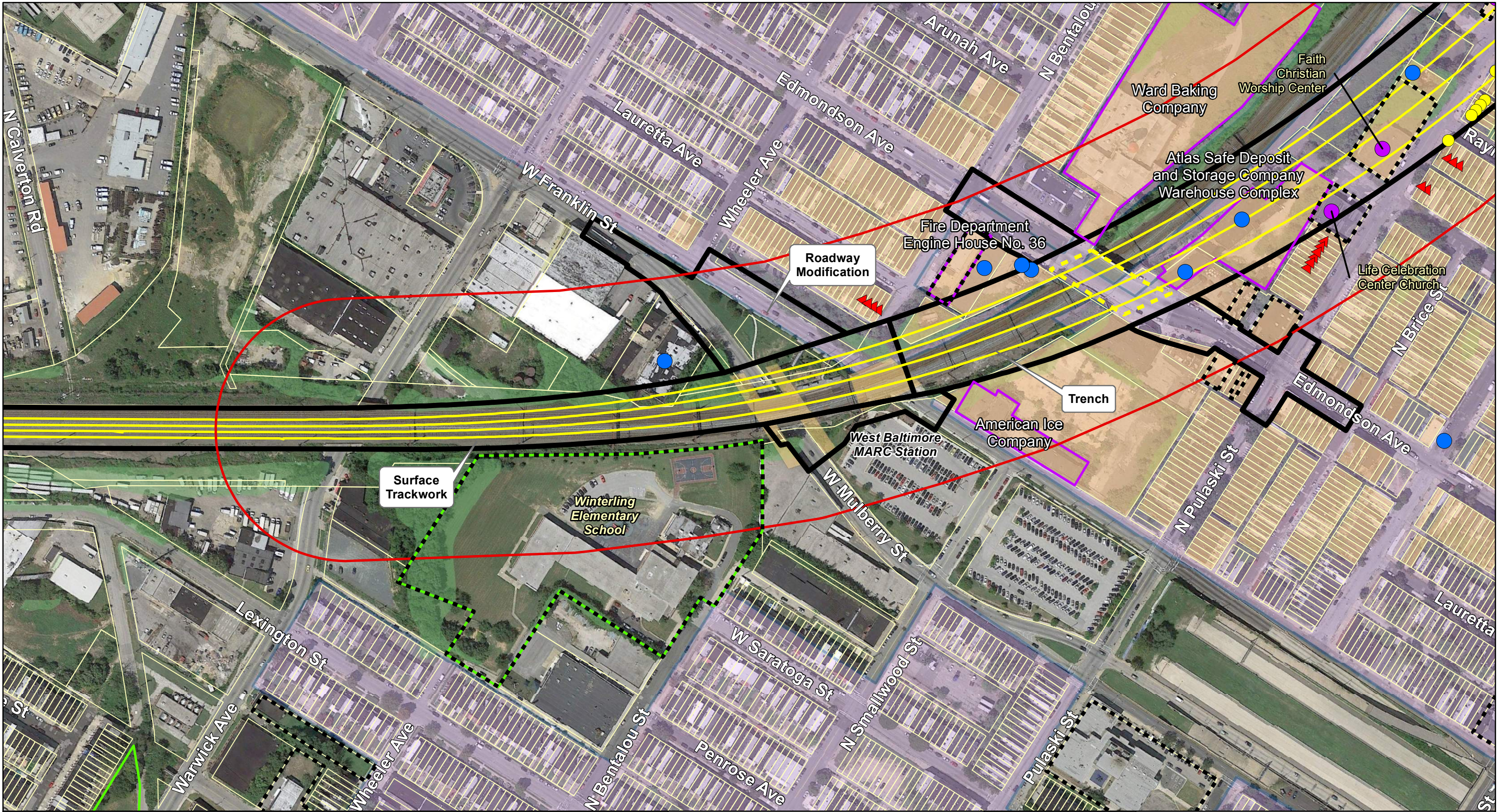
Page 1 of 7

1 inch = 200 feet

0 100 200 400 Feet

NORTH

Page Index



<ul style="list-style-type: none">Track CenterlinesLimits of Surface DisturbanceBored TunnelProposed Vent Plant LocationArea of consideration for Vent Plant Location	<ul style="list-style-type: none">Proposed Bridge ReconstructionParcel BoundariesIndividually Registered or Eligible Historic ResourceContributing to Historic DistrictHistoric Districts	<ul style="list-style-type: none">Severe Residential Noise Impact ContourResidential Building DisplacementCommunity Facility DisplacementBusiness DisplacementPotential Vibration Impact Site for Further Assessment	<ul style="list-style-type: none">NWI Wetlands100-Year FloodplainParksStreamsTree CoverCommunity Facilities
---	---	--	--

B&P Tunnel Project

Alternative 3B

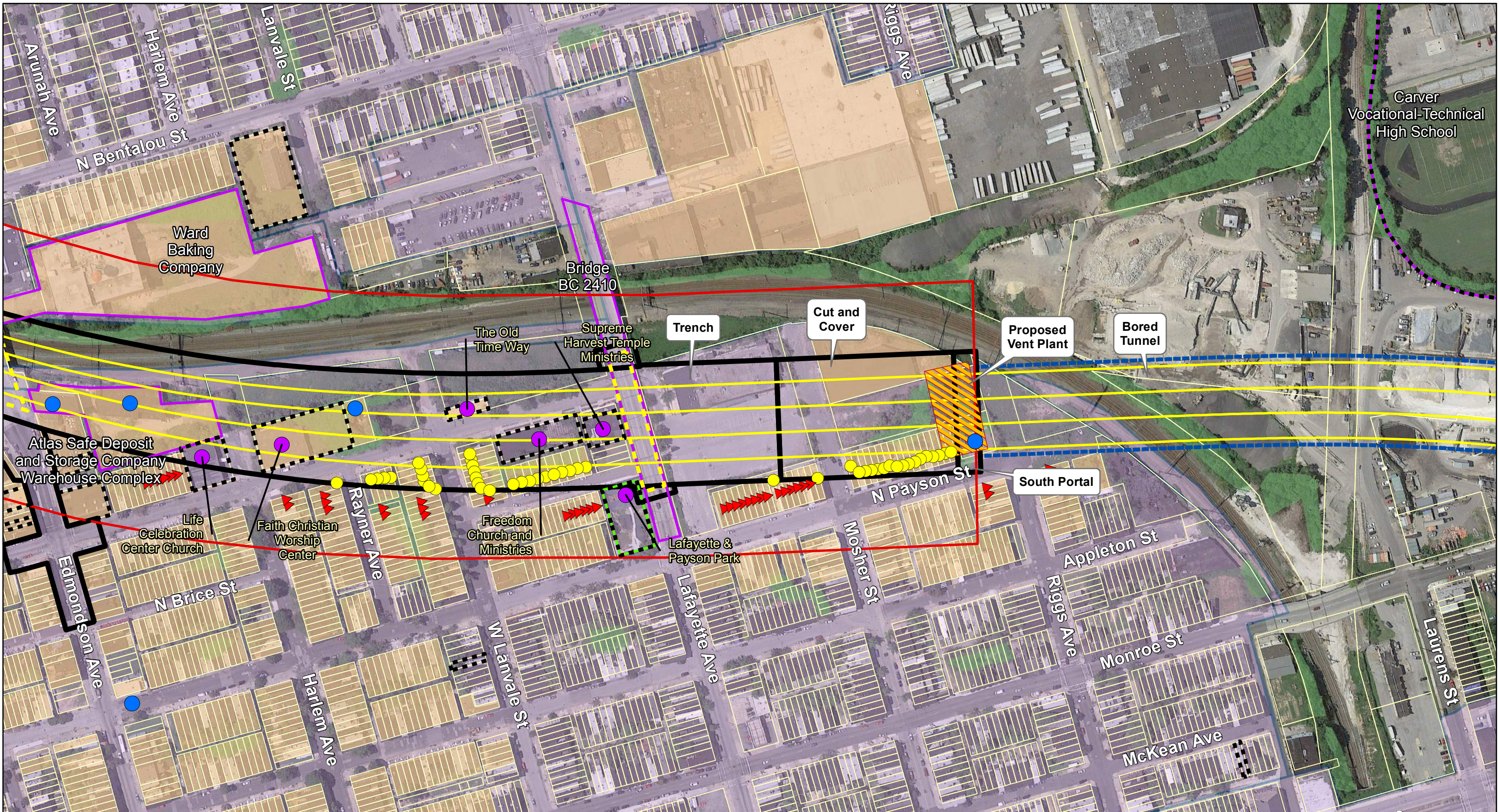
Page 2 of 7

1 inch = 200 feet

0 100 200 400 Feet

NORTH

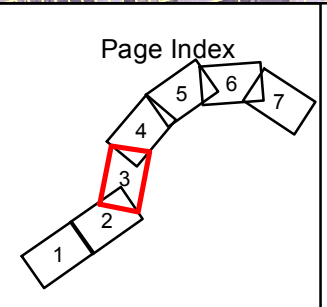
Page Index



Track Centerlines	Proposed Bridge Reconstruction	Severe Residential Noise Impact Contour	NWI Wetlands
Limits of Surface Disturbance	Parcel Boundaries	Residential Building Displacement	100-Year Floodplain
Bored Tunnel	Individually Registered or Eligible Historic Resource	Community Facility Displacement	Parks
Proposed Vent Plant Location	Contributing to Historic District	Business Displacement	Streams
Area of consideration for Vent Plant Location	Historic Districts	Potential Vibration Impact Site for Further Assessment	Tree Cover
			Community Facilities

NORTH

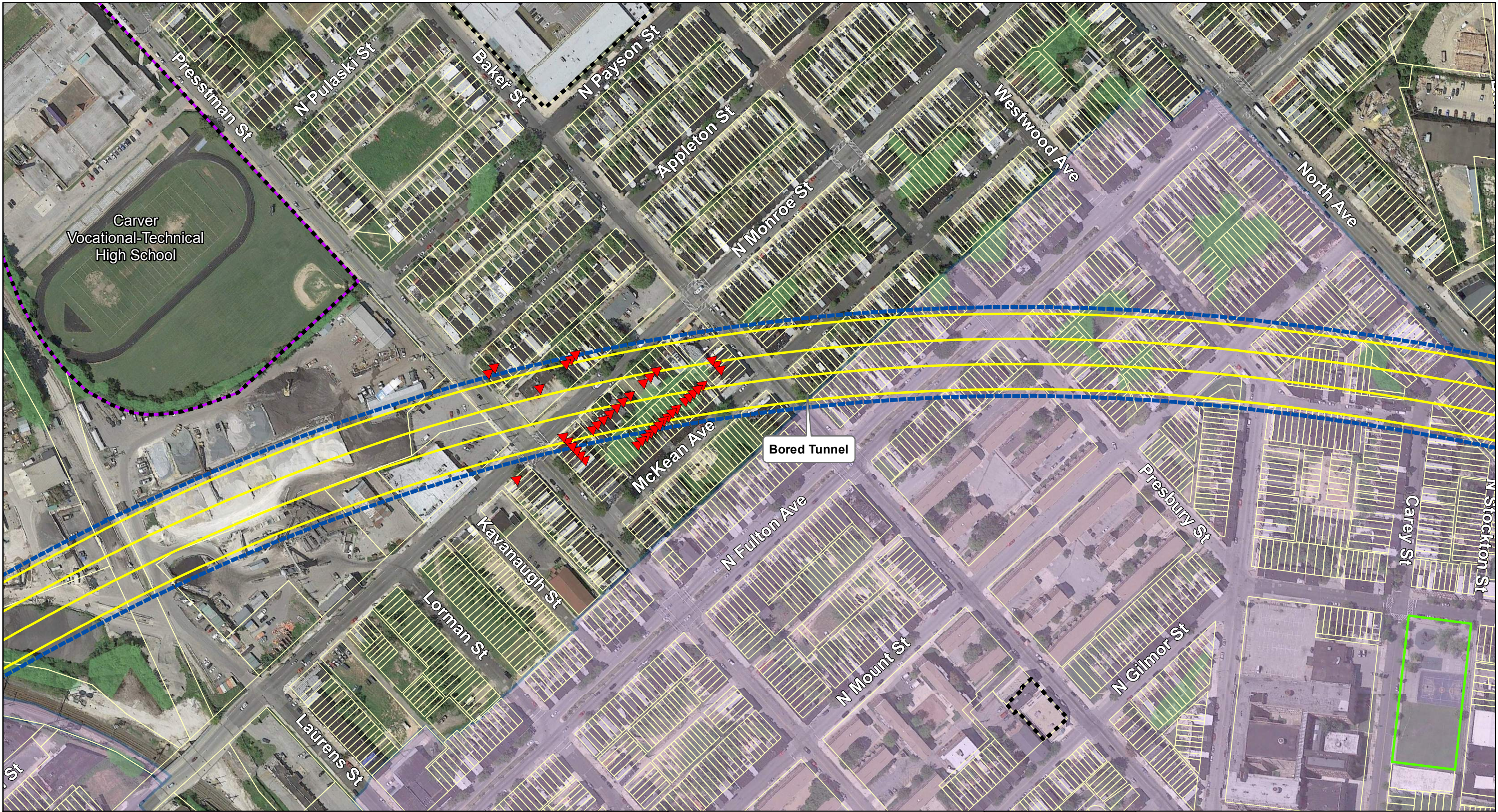
B&P Tunnel Project
Alternative 3B
Page 3 of 7
1 inch = 200 feet



B&P TUNNEL PROJECT

U.S. Department of Transportation
Federal Railroad Administration

Maryland Department of Transportation



<ul style="list-style-type: none">Track CenterlinesLimits of Surface DisturbanceBored TunnelProposed Vent Plant LocationArea of consideration for Vent Plant Location	<ul style="list-style-type: none">Proposed Bridge ReconstructionParcel BoundariesIndividually Registered or Eligible Historic ResourceContributing to Historic DistrictHistoric Districts	<ul style="list-style-type: none">Severe Residential Noise Impact ContourResidential Building DisplacementCommunity Facility DisplacementBusiness DisplacementPotential Vibration Impact Site for Further Assessment	<ul style="list-style-type: none">NWI Wetlands100-Year FloodplainParksStreamsTree CoverCommunity Facilities
---	---	--	--

B&P Tunnel Project

Alternative 3B
Page 4 of 7

1 inch = 200 feet

NORTH

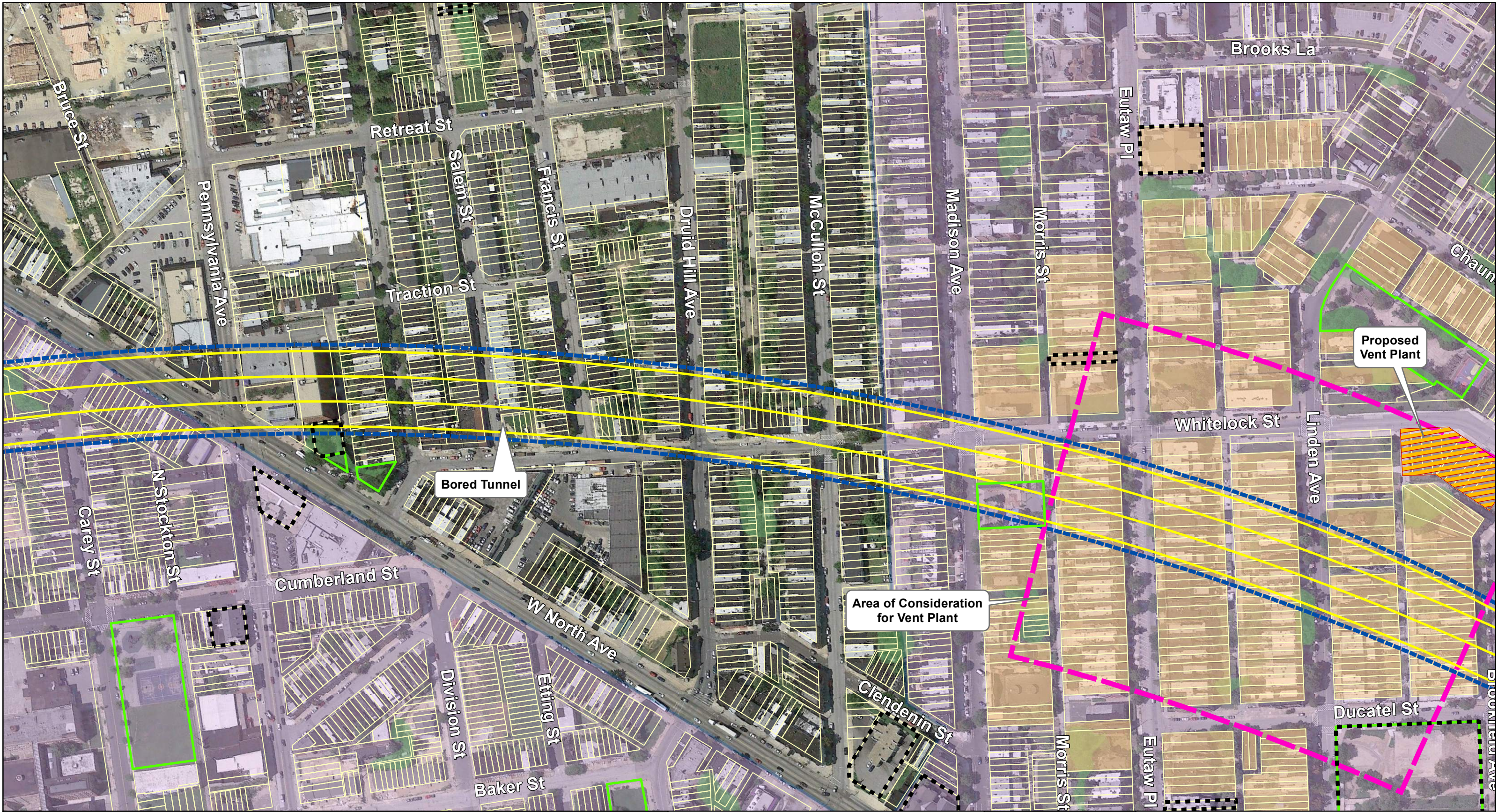
0 100 200 400 Feet

Page Index

B&P TUNNEL PROJECT

**U.S. Department of Transportation
Federal Railroad Administration**

Maryland Department of Transportation



Track Centerlines	Proposed Bridge Reconstruction	Severe Residential Noise Impact Contour	NWI Wetlands
Limits of Surface Disturbance	Parcel Boundaries	Residential Building Displacement	100-Year Floodplain
Bored Tunnel	Individually Registered or Eligible Historic Resource	Community Facility Displacement	Parks
Proposed Vent Plant Location	Contributing to Historic District	Business Displacement	Streams
Area of consideration for Vent Plant Location	Historic Districts	Potential Vibration Impact Site for Further Assessment	Tree Cover
			Community Facilities

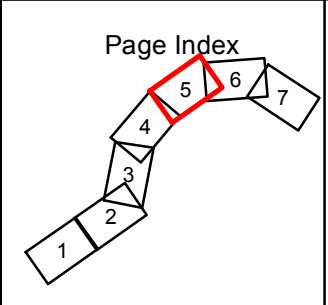
B&P Tunnel Project

Alternative 3B

Page 5 of 7

1 inch = 200 feet

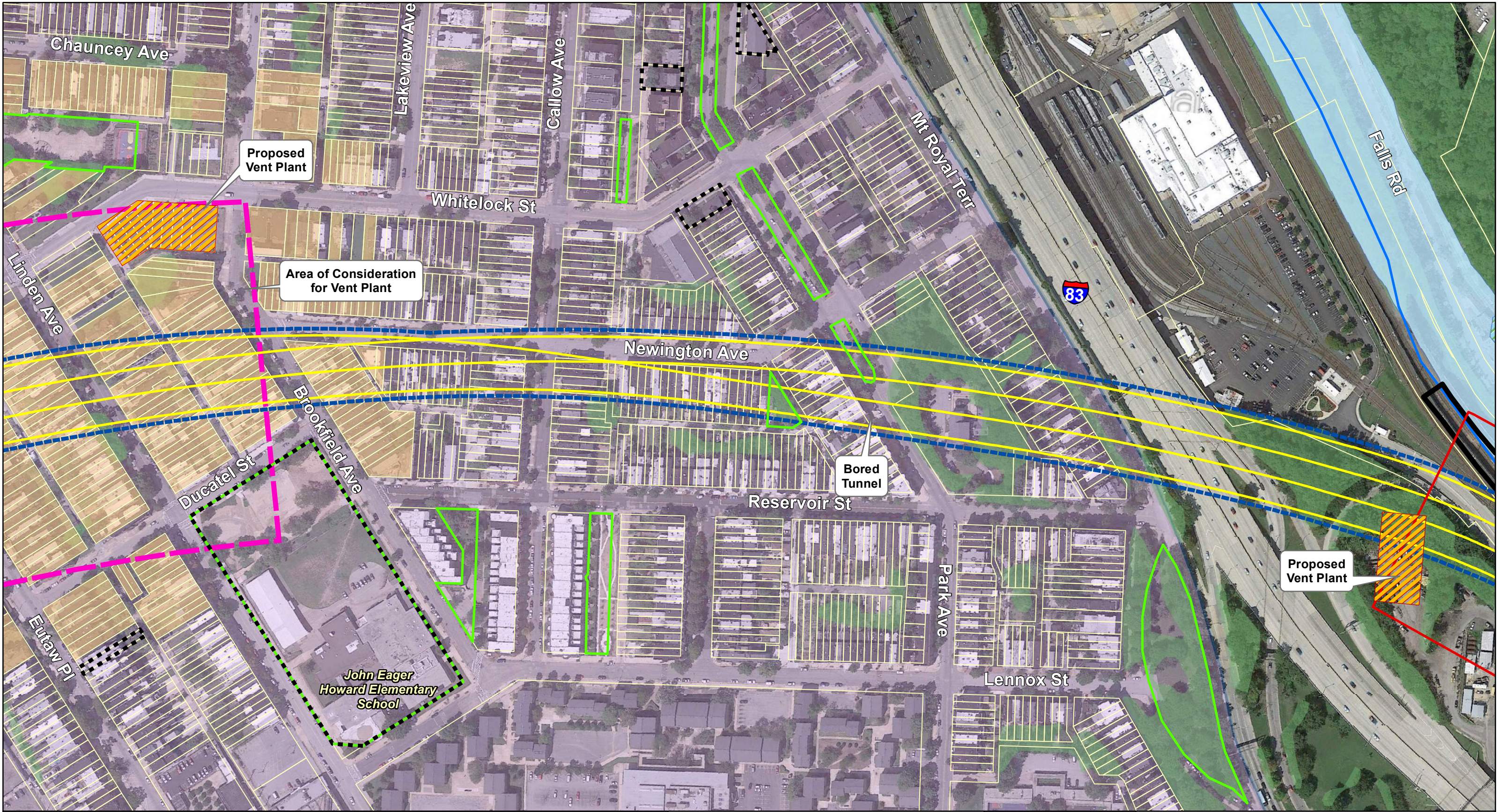
0 100 200 400 Feet






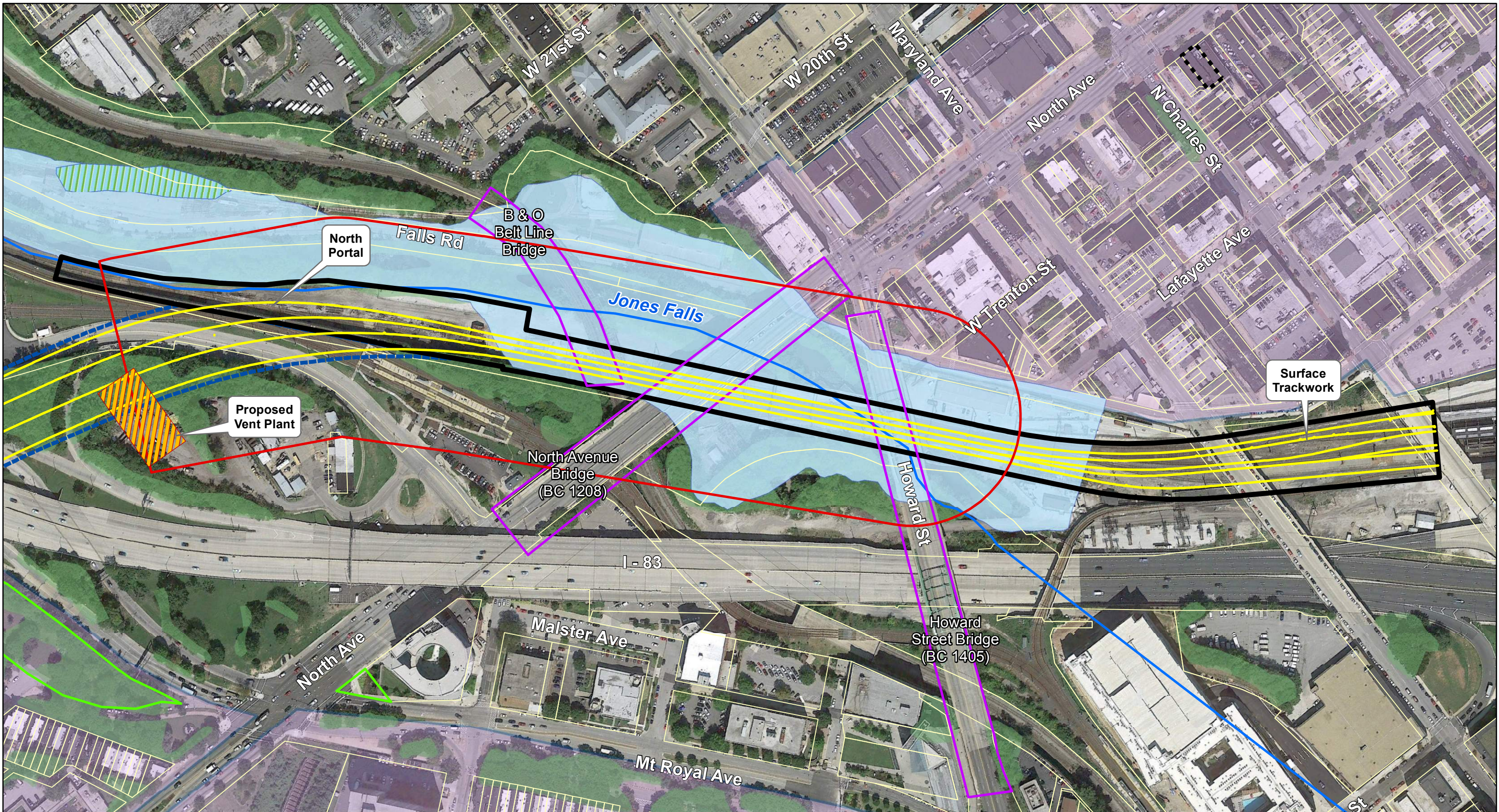
B&P TUNNEL PROJECT

U.S. Department of Transportation
Federal Railroad Administration

Maryland Department of Transportation



<ul style="list-style-type: none">Track CenterlinesLimits of Surface DisturbanceBored TunnelProposed Vent Plant LocationArea of consideration for Vent Plant Location	<ul style="list-style-type: none">Proposed Bridge ReconstructionParcel BoundariesIndividually Registered or Eligible Historic ResourceContributing to Historic DistrictHistoric Districts	<ul style="list-style-type: none">Severe Residential Noise Impact ContourResidential Building DisplacementCommunity Facility DisplacementBusiness DisplacementPotential Vibration Impact Site for Further Assessment	<ul style="list-style-type: none">NWI Wetlands100-Year FloodplainParksStreamsTree CoverCommunity Facilities	<div>B&P Tunnel Project</div> <div>Alternative 3B</div> <div>Page 6 of 7</div> <div>1 inch = 200 feet</div> <div><div><div></div><div>NORTH</div></div><div><div>0</div><div>100</div><div>200</div><div>400</div></div><div>Feet</div></div>	<div>Page Index</div> <div><div>1</div><div>2</div><div>3</div><div>4</div><div>5</div><div>6</div><div>7</div></div>	<div>B&P TUNNEL PROJECT</div> <div>U.S. Department of Transportation Federal Railroad Administration</div> <div>Maryland Department of Transportation</div>
---	---	--	--	--	---	---



<ul style="list-style-type: none">Track CenterlinesLimits of Surface DisturbanceBored TunnelProposed Vent Plant LocationArea of consideration for Vent Plant Location	<ul style="list-style-type: none">Proposed Bridge ReconstructionParcel BoundariesIndividually Registered or Eligible Historic ResourceContributing to Historic DistrictHistoric Districts	<ul style="list-style-type: none">Severe Residential Noise Impact ContourResidential Building DisplacementCommunity Facility DisplacementBusiness DisplacementPotential Vibration Impact Site for Further Assessment	<ul style="list-style-type: none">NWI Wetlands100-Year FloodplainParksStreamsTree CoverCommunity Facilities
---	---	--	--

B&P Tunnel Project

Alternative 3B

Page 7 of 7

1 inch = 200 feet

0 100 200 400 Feet

NORTH

Page Index