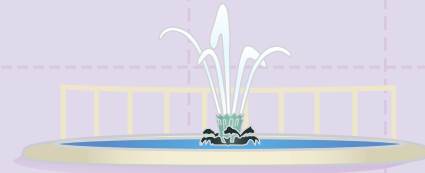


# New Orleans

TRAVEL TO THE BIG EASY IN STYLE

ARRIVE IN THE HEART OF THIS BUSTLING CITY READY TO HAVE A GOOD TIME.  
THERE'S SO MUCH TO SEE, HEAR, EAT AND DRINK SO CLOSE TO THE STATION.  
SOAK UP AS MUCH AS YOU CAN AND THEN COME BACK FOR MORE.



CITY PARK  
4.9 mi

Esplanade Ave



ARMSTRONG PARK  
1.4 mi

N Rampart St

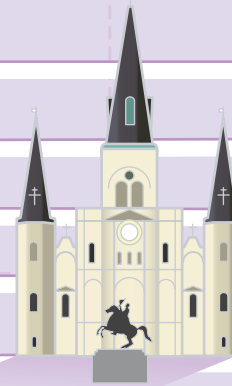
1.3 mi



Bourbon St



Chartres St



JACKSON SQUARE  
1.6 mi



FRENCH MARKET  
1.6 mi



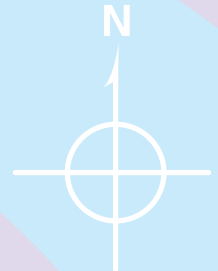
OLD U.S. MINT  
2.0 mi

1.3 mi



AQUARIUM OF THE AMERICAS

MISSISSIPPI RIVER

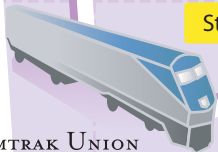


LOUISIANA SUPERDOME  
0.5 mi



NEW ORLEANS ARENA  
0.4 mi

Start



AMTRAK UNION PASSENGER TERMINAL

OGDEN MUSEUM OF SOUTHERN ART  
0.5 mi



St Charles Ave

Magazine St

Canal St

Poydras St



NATIONAL WORLD WAR II MUSEUM  
0.6 mi



LOUISIANA CHILDREN'S MUSEUM  
0.7 mi