

April 9, 2017

**NEW YORK**  
and  
**TORONTO**



**NEW YORK - ALBANY**  
**SYRACUSE - BUFFALO**  
**NIAGARA FALLS - TORONTO**  
and intermediate stations



*See where the train can take you<sup>SM</sup>*

**1-800-USA-RAIL**

**[www.amtrak.com](http://www.amtrak.com)**

# MAPLE LEAF

63		◀ Train Number ▶		64		
Daily		◀ Normal Days of Operation ▶		Daily		
		◀ On Board Service ▶				
Read Down	Mile	▼	Symbol	▲	Read Up	
R190*		Connecting Train at Penn Station				R639*
3 15A	0	Dp	Washington, DC	●●QT	Ar **	
3 55A	40	↓	Baltimore, MD—Penn Station	●●QT	Ar **	
4 48A	109	↓	Wilmington, DE	●●QT	Ar **	
5 15A	135	↓	Philadelphia, PA—30th Street Sta.	●●QT	Ar 12 40A	
5 45A	167	↓	Trenton, NJ	●●QT	Ar 12 11A	
6 22A	215	↓	Newark, NJ	●●QT	Ar 11 32P	
6 40A	225	Ar	New York, NY—Penn Station	●●QT	Dp 11 15P	
7 15A	0	Dp	<b>NEW YORK, NY</b> —Penn Station	●●QT	Ar 9 50P	
7 44A	14	↓	Yonkers, NY	○●	Ar 9 16P	
8 03A	32	↓	Croton-Harmon, NY	○●QT	Ar 8 56P	
8 45A	73	↓	Poughkeepsie, NY	○●QT	Ar 8 15P	
9 00A	88	↓	Rhinecliff, NY	●●QT	Ar 8 01P	
9 20A	114	↓	Hudson, NY	●●QT	Ar 7 40P	
9 50A	141	Ar	<b>ALBANY-RENSSELAER, NY</b>	●●QT	Dp 7 15P	
10 00A		Dp		Ar	6 55P	
10 24A	159	↓	Schenectady, NY	●●QT	Ar 6 27P	
10 44A	177	↓	Amsterdam, NY	○●	Ar 5 10P	
11 41A	237	↓	Utica, NY	●●QT	Ar 4 09P	
11 54A	250	↓	Rome, NY	○●	Ar 3 51P	
12 43P	291	↓	Syracuse, NY	●●QT	Ar 3 08P	
2 02P	370	↓	Rochester, NY	●●QT	Ar 1 53P	
3 11P	431	↓	Buffalo-Depew, NY	●●QT	Ar 12 59P	
3 24P	437	↓	<b>BUFFALO-EXCHANGE ST., NY</b>	○●	Ar 12 45P	
4 51P	460	Ar	Niagara Falls, NY	●●	Dp 12 07P	
4 53P		Dp		Ar	10 34A	
4 58P	462	Ar	Niagara Falls, ON	□○	Dp 10 18A	
5 45P		Dp		Ar	10 16A	
6 08P	473	↓	St. Catharines, ON	□○	Ar 9 54A	
6 27P	488	↓	Grimsby, ON	□○	Ar 9 34A	
7 04P	512	↓	Aldershot, ON	□○	Ar 8 59A	
7 18P	523	↓	Oakville, ON	□○	Ar 8 44A	
7 41P	544	Ar	<b>TORONTO, ON</b>	□●	Dp 8 20A	

SCHEDULES EFFECTIVE 4/9/17

## Service on the Maple Leaf<sup>SM</sup>

- Coaches:** All reserved train/connecting train. Reserved seat ticket required for boarding.
- Business class:** Ticket price includes non-alcoholic beverages and newspaper; amenities available only on U.S. side of the border.
- Cafe:** Sandwiches, snacks and beverages.
- Wi-Fi available.
- This station is operated by VIA Rail Canada. Trains between Niagara Falls, ON and Toronto are operated by VIA Rail Canada in cooperation with Amtrak. Through fares/ticketing available.
- \* Connecting train schedule varies on weekends. Consult Amtrak.com or call Amtrak at 1-800-USA-RAIL for further details.
- \*\* Consult Amtrak.com or 1-800-USA-RAIL for available connection.

All Amtrak services and stations are non-smoking.

**NOTE—Proper documentation is required to cross U.S./Canadian border when traveling on the Maple Leaf. Visit Amtrak.com Crossing the Border**

This service is supported by funds made available by the New York State Department of Transportation.

SHADING KEY	
Daytime train	Thruway and connecting services
Connecting train	

## MAPLE LEAF ROUTE MAP and SYMBOLS



### SYMBOLS KEY

- A Time Symbol for A.M.
- P Time Symbol for P.M.
- Bus stop
- Quik-Trak self-serve ticketing kiosk
- Unstaffed station
- Staffed ticket office; may or may not be open for all train departures
- ♿ Station wheelchair accessible; no barriers between station and train
- Station wheelchair accessible; not all station facilities accessible

## Thruway Connections

**Coach USA Erie—Buffalo-Exchange St. Sta., NY/Jamestown, NY.**

63		Connecting Train Number		64	
8063		Thruway Number		8064	
Mo-Sa	Mile	▼	Days of Operation	▲	Mo-Sa
3 48P	0	Dp	Buffalo-Exchange St., NY	Ar	10 25A
7 15P	45	Ar	Dunkirk, NY	Dp	9 24A
7 29P	50	Ar	Fredonia, NY	Dp	9 13A
8 15P	78	Ar	Jamestown, NY	Dp	8 30A

## Connecting Local Services

**New York**  
**Metro-North Railroad:**  
 (800) 638-7646 or  
 (212) 532-4900; www.mta.info  
**Long Island Rail Road (LIRR)**  
 (commuter rail): (718) 217-LIRR;  
 www.mta.info  
**NJ TRANSIT** (commuter rail &  
 bus): (973) 275-5555;  
 www.NJtransit.com  
**New York City Transit**  
 (subway & bus):  
 (718) 330-1234; www.mta.info

**Buffalo**  
**Niagara Frontier**  
**Transportation Authority**  
 (light rail & bus): (716) 855-7211;  
 www.nfta.com  
**Toronto**  
**GO Transit** (commuter rail):  
 (416) 869-3200;  
 www.gotransit.com  
**Toronto Transit Commission**  
 (subway, streetcar & bus):  
 (416) 393-4636;  
 www.toronto.ca/ttc

## Carry-On Pet Program

**Amtrak.com Pets Animals** A small cat or dog in a pet carrier may be carried on Maple Leaf trains with reservations required. Reservations can be made at a staffed station or visit the website for complete information.



**Making 500 destinations a far better ride** is just a click away.

Wherever you see this symbol is an indication that a hyperlink is close by, and in blue bold. Simply hover your mouse and click, and it will take you to more information about your topic.

## FOR YOUR SAFETY

### *When using the escalators...*

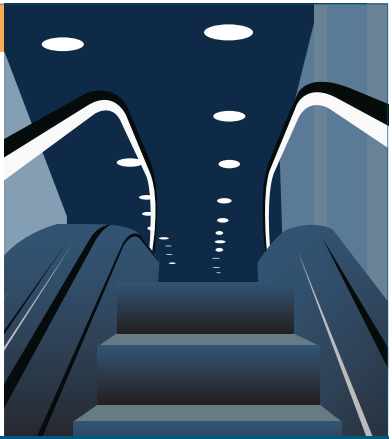
Allow **one hand free** when riding the escalators.

Place baggage **behind you** while on the escalators.

Passengers with excess baggage will be asked to use the elevator.

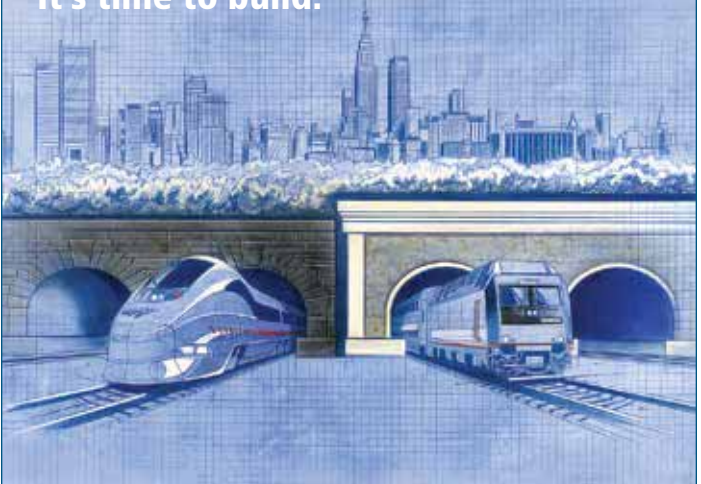


Amtrak is a registered service mark of the National Railroad Passenger Corporation.



**Each day, 200,000 people move in and out of the world's economic capital through a tunnel that's 105 years old.**

The Hudson Tunnel Project.  
**It's time to build.**



See our plans for the future at  
**[nec.amtrak.com](http://nec.amtrak.com)**

**#TimeToBuild**

Amtrak is a registered service mark of the National Railroad Passenger Corporation.