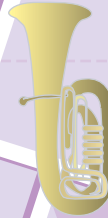
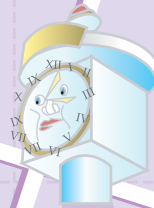


LINCOLN CENTER
1.7 mi



CARNEGIE HALL
1.7 mi



FAO SCHWARZ
1.7 mi



TIMES SQUARE
.8 mi



RADIO CITY
1.1 mi



MACY'S
.2 mi



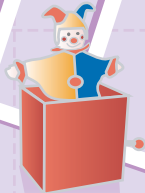
EMPIRE STATE BUILDING
.91 mi



UNITED NATIONS
1.8 mi



AMTRAK PENN STATION
Start



GEPPETTO'S TOY BOX
1.3 mi

New York City

— SMACK-DAB IN THE MIDDLE OF MANHATTAN —
STEP OFF THE TRAIN AT PENN STATION AND INTO THE HEART OF THE WORLD'S GREATEST METROPOLIS. AN UNPARALLED ARRAY OF BIG CITY ATTRACTIONS AWAIT NEARBY, EASILY ACCESSIBLE BY FOOT, TAXI OR SUBWAY.